

# Film-Tech

The information contained in this Adobe Acrobat pdf file is provided at your own risk and good judgment.

These manuals are designed to facilitate the exchange of information related to cinema projection and film handling, with no warranties nor obligations from the authors, for qualified field service engineers.

If you are not a qualified technician, please make no adjustments to anything you may read about in these Adobe manual downloads.

[www.film-tech.com](http://www.film-tech.com)





### FREQUENCY RESPONSE CURVE

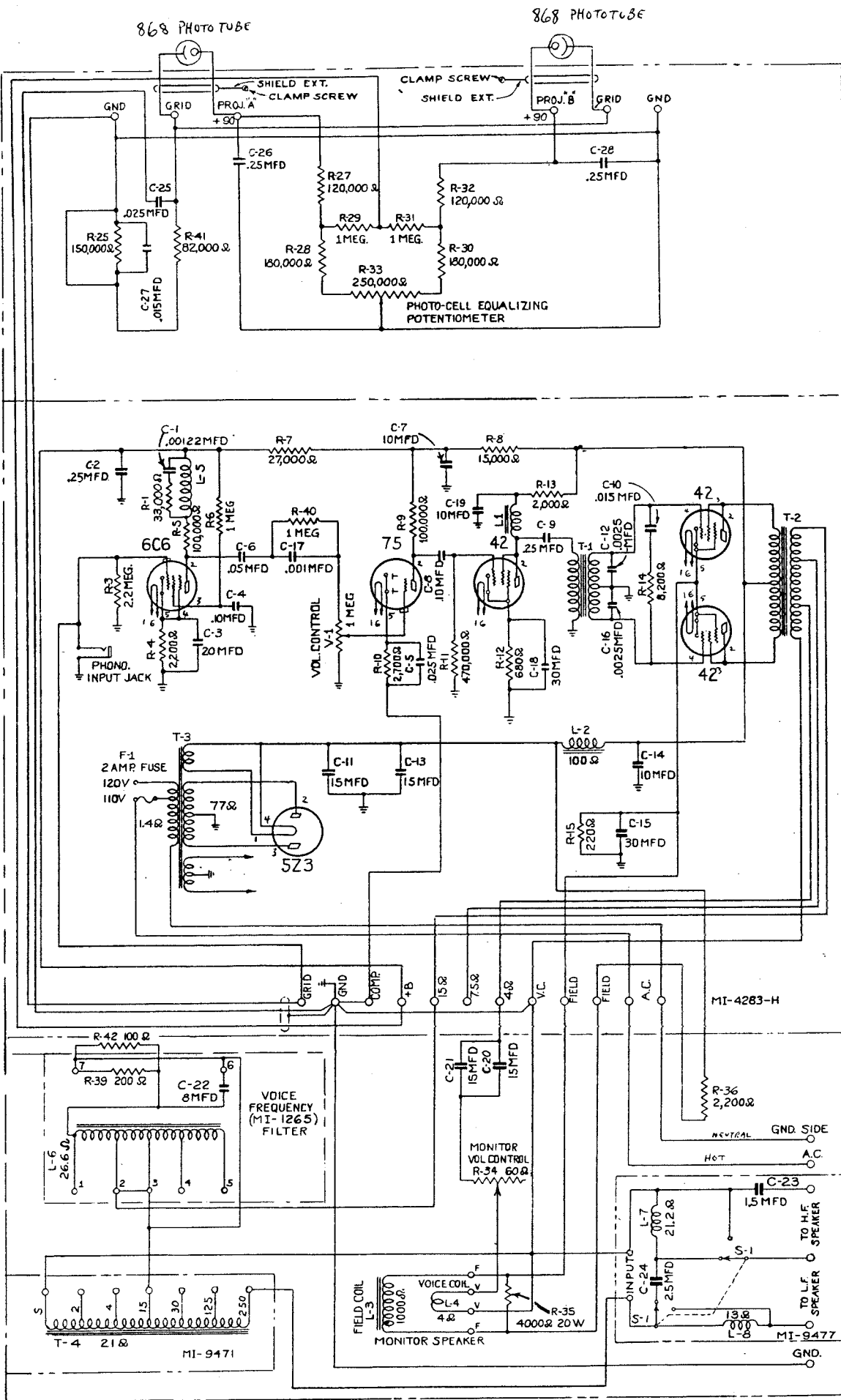
- (1) Stock No. 26571 Film
- (2) 1-1/4 mil Image Slit
- (3) Monitor Volume Control "OFF"
- (4) Power Level at 1000 cycles +12 db (.0125 watt zero ref.)
- (5) Disconnect Input to Crossover Network. Connect 15 ohm Resistor across MI-4285H Output.

RESPONSE IN DB  
 + 6  
 + 4  
 + 2  
 0  
 - 2  
 - 4  
 - 6  
 - 8  
 - 10  
 - 12  
 - 14  
 - 16  
 - 18

30 40 50 60 70 80 90 100 200 300 400 500 600 700 1000 2000 3000 4000 5000 6000 7000 10,000  
 10K 20K 30K 40K

FREQUENCY RESPONSE IN CYCLES PER SECOND

Figure 1 - Response Curve - PG-138



THIS AMPLIFIER NEEDS A MONITOR FIELD COIL CONNECTED AT ALL TIMES.  
 THE STAGE FIELD COIL POWER IS SUPPLIED BY A SEPARATE SUPPLY.

MI-9250 T-160242  
 Figure 2 - Schematic Diagram MI-9250

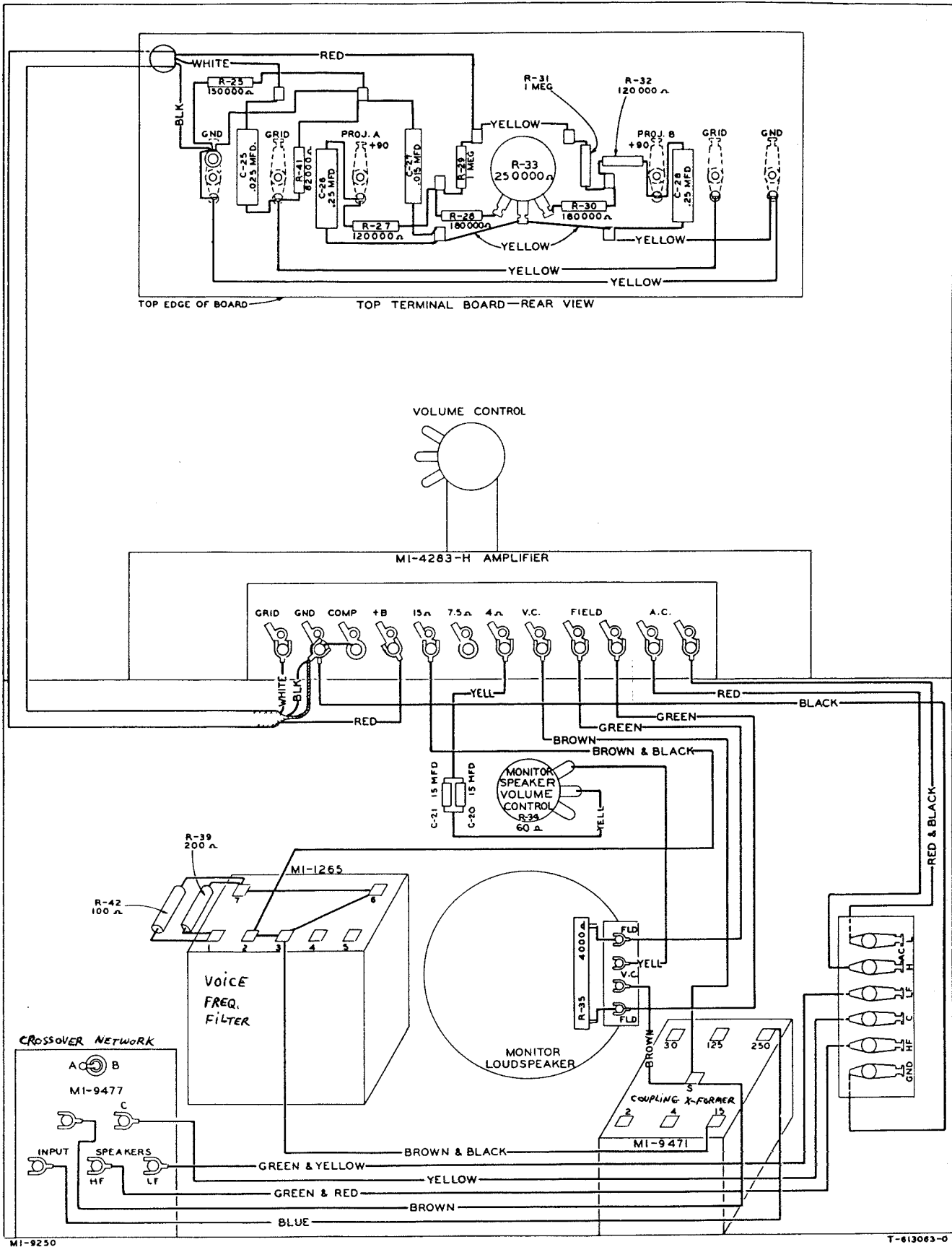


Figure 3 - Cabinet Wiring MI-9250

