

Film-Tech

The information contained in this Adobe Acrobat pdf file is provided at your own risk and good judgment.

These manuals are designed to facilitate the exchange of information related to cinema projection and film handling, with no warranties nor obligations from the authors, for qualified field service engineers.

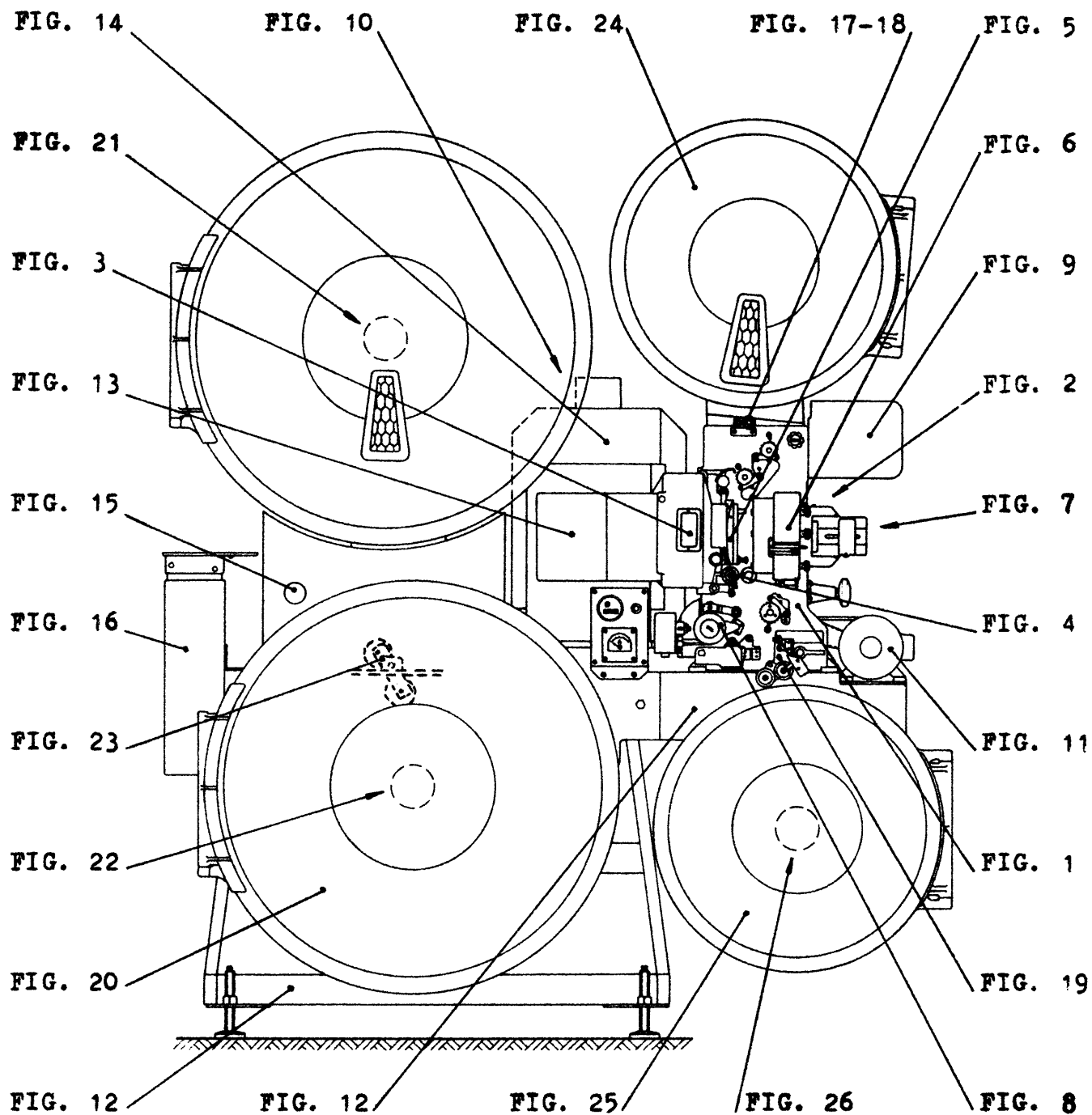
If you are not a qualified technician, please make no adjustments to anything you may read about in these Adobe manual downloads

www.film-tech.com

V I C T O R I A 18

Spare Parts

Catalogue



V I C T O R I A 1 8

- FIG. 1 - PROJECTOR (operating side)
- FIG. 2 - PROJECTOR MECHANISM (from serial No. 83879)
- FIG. 3 - DRUM SHUTTER AND SHUTTER HOUSING
- FIG. 4 - INTERMITTENT UNIT
- FIG. 5 - GATE BRACKET AND GATE FRAME (from serial No. 83858)
- FIG. 6 - THREE-LENS TURRET
- FIG. 7 - 5" SINGLE LENS HOLDER
- FIG. 8 - OPTICAL SOUNDHEAD
- FIG. 9 - MAGNETIC SOUNDHEAD
- FIG. 10 - AIR COOLING UNIT
- FIG. 11 - MOTOR (from serial No. 84400)
- FIG. 12 - PROJECTOR FRAME AND BEAM
- FIG. 13 - FLAT MIRROR HOLDER ASSEMBLY
- FIG. 14 - 18/X LAMPHOUSE WITH X4000 OPTICAL SYSTEM HOLDER
- FIG. 15 - MOTOR/GEAR BOX FOR TAKE-UP AND REWIND ASSEMBLY
- FIG. 16 - STANDARD WIRING SYSTEM BOX
- FIG. 17 - 35 mm UPPER GUIDE ROLLERS (up to serial No. 84500)
- FIG. 18 - 35 mm UPPER GUIDE ROLLERS (from serial No. 84501)
- FIG. 19 - LOWER GUIDE ROLLERS WITH DOUBLE FILM BREAK SWITCH
- FIG. 20 - 35 mm UPPER AND LOWER SPOOL DISCS AND COVERS
- FIG. 21 - UPPER FEED AND REWIND ASSEMBLY
- FIG. 22 - LOWER WEIGHT COMPENSATED TAKE-UP
- FIG. 23 - LOWER TAKE-UP DOUBLE BELT IDLER
- FIG. 24 - AUXILIARY UPPER SPOOL DISC AND COVER
- FIG. 25 - AUXILIARY LOWER SPOOL DISC AND COVER
- FIG. 26 - AUXILIARY SPOOL TAKE-UP

The mark ° refers to 35 mm parts only.

The mark °° refers to 35/70 mm parts only.

The Zeros (00) in front of numbers mean the piece is standard.

The letter Z indicates a gear, figures show number of teeth.

WHEN ORDERING SPARES, PLEASE ALWAYS QUOTE THE SERIAL NUMBER
OF THE PROJECTOR.

FIG. 9 - MAGNETIC SOUNDHEAD

- 00339 - Circlip securing roller (8mm I.D.)
- 00604 - Lay on pressure roller for 35 mm
- 00606 - Plain roller (19mm O.D.)
- 00608 - Flanged roller (22mm O.D.)
- 00619 - Lay on pressure roller for 70 mm
- °°321 - Complete magnetic soundhead for 70/35
- 322 - Lay on pressure roller spring housing
- 323 - Lay on pressure roller spring
- 324 - Lay on pressure roller arm
- 325 - Lay on pressure roller arm and bracket assembly
- 326 - Eccentric spindle
- 327 - Lay on pressure roller arm spring
- 328 - Lay on pressure roller arm knob
- 329 - Lay on pressure roller arm knob cover indicator
- 330 - Terminal board for 35mm sound track
- 331 - Terminal board for 70mm sound track
- 332 - Filter roller tension screw
- 333 - Filter roller spring
- 334 - Roller arm assembly complete
- 335 - Roller arm only
- 336 - Roller spindle o.d. 8mm
- 337 - Filter roller spindle
- 338 - Spindle for flanged rollers o.d. 8mm
- °339 - Base for 35mm cluster
- °°339bis - Base for 70mm cluster
- °340 - 35mm magnetic cluster
- °°340bis - 70mm magnetic cluster
- 341 - drum with shaft
- 342 - spring washer for flywheel
- 343 - Ball race
- 344 - Filter roller lever with ball race
- 345 - Oil container
- °346 - Complete magnetic soundhead for 35
- 347 - Sound synch. roller arm assembly (from No. 1201)

FIG. 10 - AIR COOLING UNIT

- 00398 - Rubber sleeve
- 361 - Complete fan assembly (mains voltage and frequency to be specified)
- 362 - Fan housing
- 363 - Motor flange
- 364 - Air filter complete with cover and stud
- 365 - Air filter (spring and fabric)
- 366 - Knob securing filter cover
- 367 - Filter stud
- 368 - Filter cover
- 369 - Fan motor (mains voltage and frequency to be specified)
- 370 - Fan

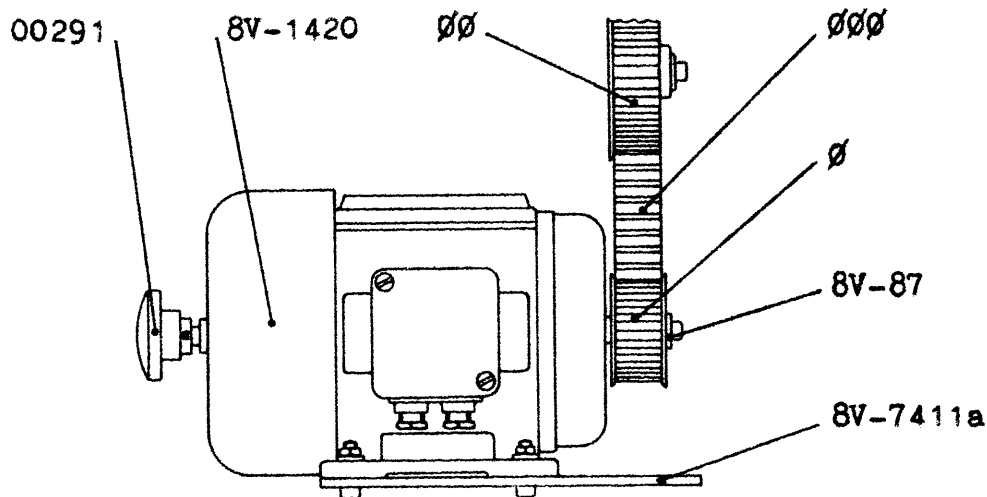


FIG. 11

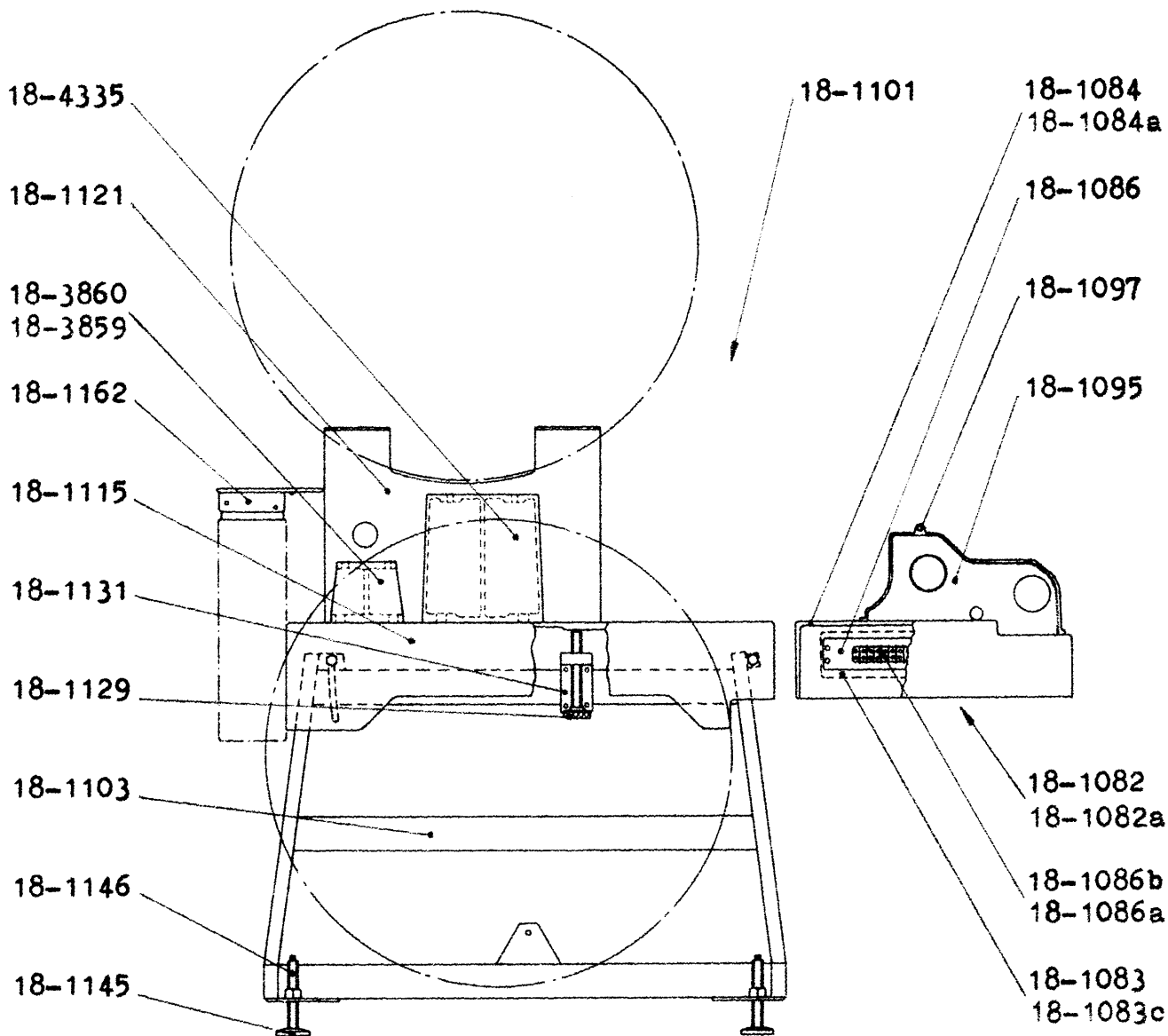


FIG. 12

FIG. 11 - MOTOR (from serial No.84400)

- 00291 - Knob, 50mm dia.
 8V-87 - Washer with screw
 8V-1420 - 8 pole drive motor (voltage and Hz to be advised)
 8V-7411a - Motor plate

TABLE OF RATIOS				
FPS	Hz	Pinion ϕ	Pulley $\phi\phi$	Belt $\phi\phi\phi$
24	50	Z.36 8V-7412	Z.55 8V-85	8V-1422
24	60	Z.30 8V-7412g	Z.55 8V-85	8V-1422
24 Sync.	50	Z.32 8V-1441	Z.50 8V-85s	8V-1422
24 Sync.	60	Z.32 8V-1441	Z.60 8V-85b	8V-1452
25 Sync.	50	Z.40 8V-1466	Z.60 8V-85b	8V-1452

FIG. 12 - PROJECTOR FRAME AND BEAM

- 18-1082 - Complete projector beam
 18-1083 - Terminal board cover
 18-1084 - Projector beam (machined casting)
 18-1086b - Terminal board
 18-1095 - Motor belt cover
 18-1097 - Belt cover knob
 18-1101 - Complete frame
 18-1103 - Girder stand
 18-1115 - Frame beam
 18-1121 - Spool disc support shield
 18-1129 - Tilting screw with knob
 18-1131 - Tilting screw plate
 18-1145 - Pod for levelling screw
 18-1146 - Levelling screw
 18-1162 - Complete film splicer table
 18-4335 - Upper spool disc support
 18-3859 - Motor/gear box support from serial No. 1000
 18-3860 - Motor/gear box support up to serial No. 999

FOR AUTOMATED PROJECTOR

- 18-1082a - Complete projector beam
 18-1083c - Terminal board cover
 18-1084a - Projector beam (machined casting)
 18-1086a - Terminal board

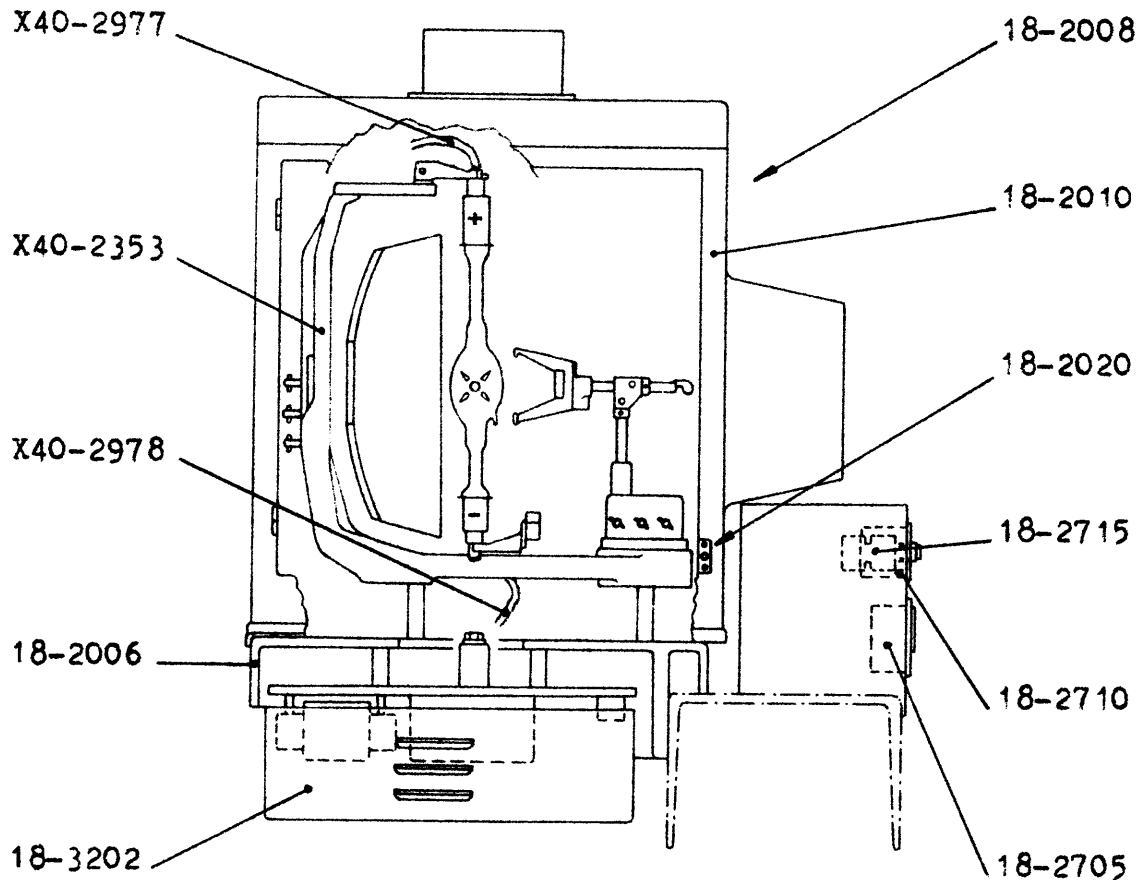


FIG. 14

FIG. 14 - 18/X LAMPHOUSE WITH X4000 OPTICAL
SYSTEM HOLDER

- 18-2006 - Lamphouse beam (machined casting)
- 18-2008 - Lamphouse with starter and X4000 optical system holder
- 18-2010 - 18/X Lamphouse
- 18-2020 - Microswitch and box
- 18-2705 - Lamphouse ammeter
- 18-2710 - Hour meter (voltage and frequency to be specified)
- 18-2715 - Bulb striking push button
- 18-3202 - DX starter
- X40-2353 - Device with main and auxiliary mirror holder
- X40-2977 - Positive cable for 1600W bulbs
- X40-2978 - Negative cable for 1600W bulbs

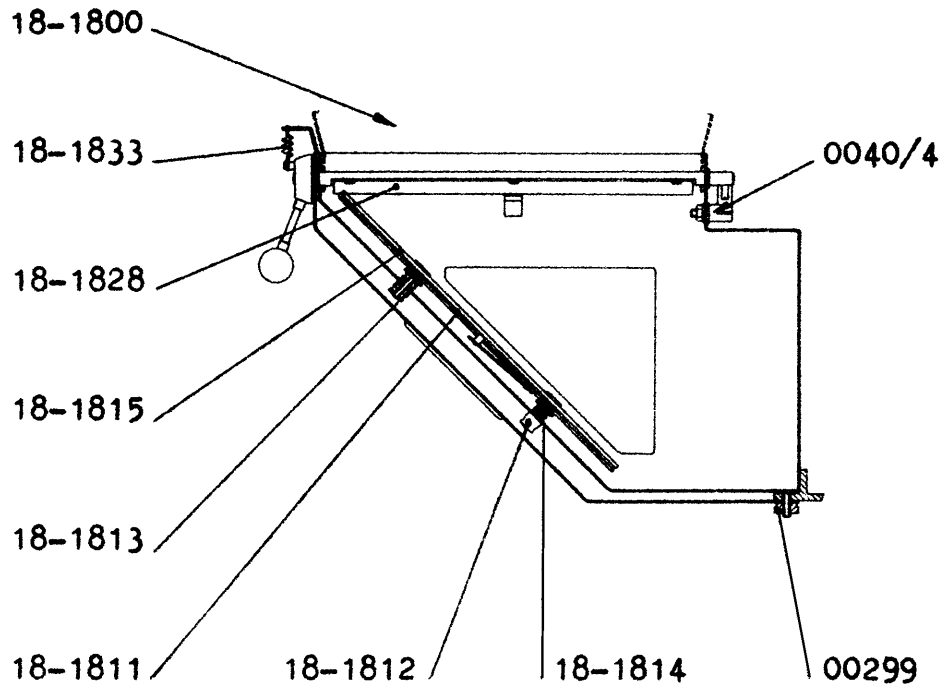


FIG. 13

FIG. 13 - FLAT MIRROR HOLDER ASSEMBLY

- 0040/4 - Insulating bush and washers
- 00299 - Knurled knob for cover fastening
- 18-1800 - Complete mirror holder assembly
- 18-1811 - Mirror holder only
- 18-1812 - Mirror adjusting screw
- 18-1813 - Mirror adjusting bush
- 18-1814 - Spring for mirror adjusting screw
- 18-1815 - Flat mirror
- 18-1828 - Dowser
- 18-1833 - Dowser spring

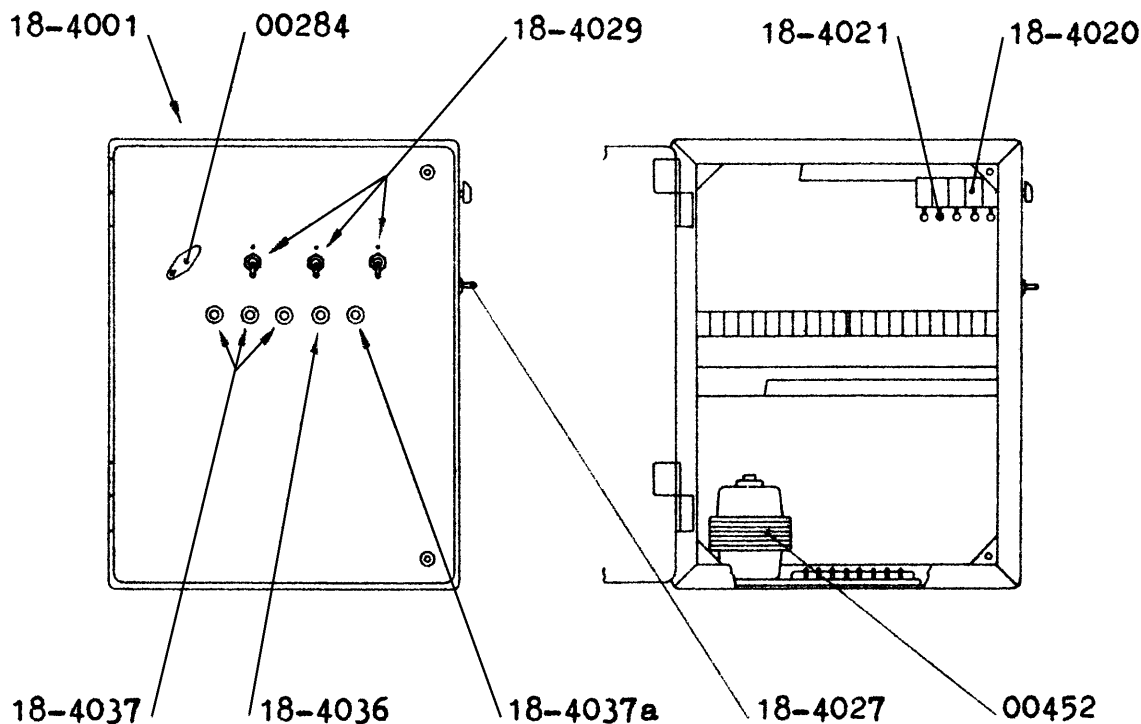


FIG. 16

FIG. 16 - STANDARD SWITCH FUSE BOX

- 00284 - Mascarini master switch with knob
- 00452 - A.C. exciter lamp power supply
- 18-4001 - Complete wiring system box
- 18-4020 - Motor switch with start resistors (working voltage to be specified when ordering)
- 18-4021 - Motor start resistor (value in Ohms to be specified)
- 18-4027 - Rewind switch
- 18-4029 - Single pole switch
- 18-4036 - 1 Amp glass fuse
- 18-4037 - 5 Amp glass fuse
- 18-4037a - 10 Amp glass fuse

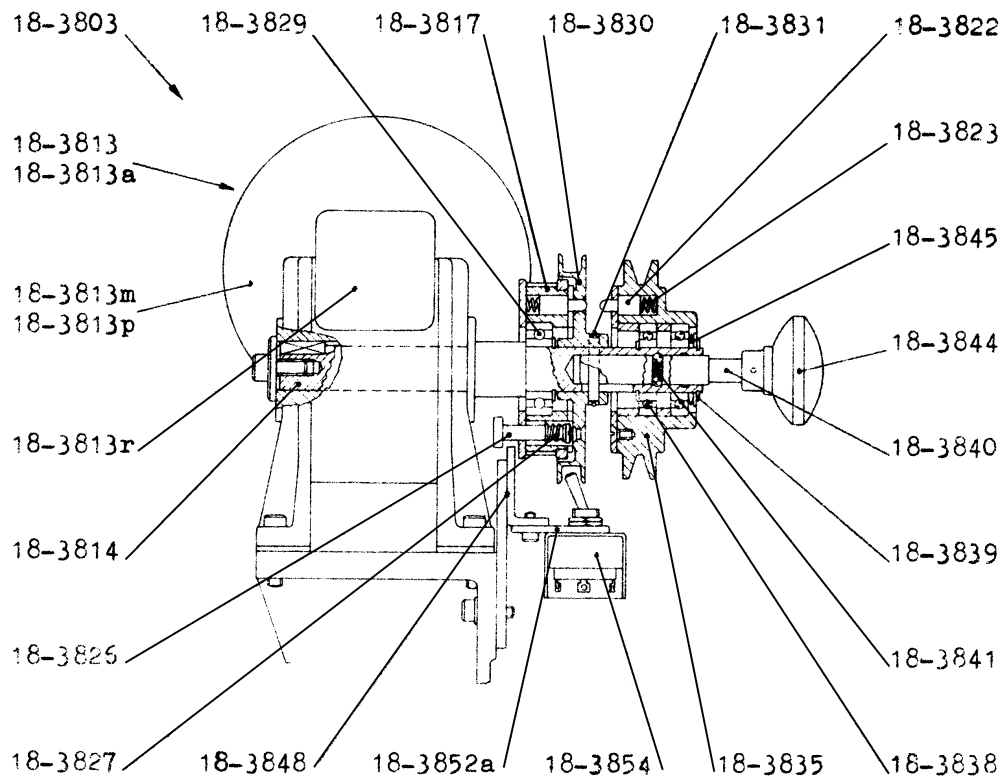


FIG. 15

FIG. 15 - MOTOR AND GEAR BOX FOR TAKE-UP AND REWIND ASSEMBLY

- 18-3803 - Motor and gear box complete with shaft assembly, pulleys and knob (cycles to be specified)
- 18-3813 - Motor and gear box 50 cycles, less shaft assembly, pulleys and knob
- 18-3813a - Motor and gear box 60 cycles, less shaft assembly, pulleys and knob
- 18-3813m - Motor 50 cycles
- 18-3813p - Motor 60 cycles
- 18-3813r - Gear box 1:15 ratio, with gear and flange less motor shaft assembly pulleys and knob
- 18-3814 - Shaft for motor and gear box
- 18-3817 - 2.27 toothed pulley
- 18-3822 - Flunger
- 18-3823 - Flunger spring
- 18-3826 - Spindle for toothed pulley stop
- 18-3827 - Spring for stop spindle
- 18-3829 - Ball race
- 18-3830 - Sliding flange plate
- 18-3831 - Circlip ring
- 18-3835 - "V" belt pulley (outside diam. to be specified)
- 18-3838 - Ball race
- 18-3839 - 20 mm. diameter circlip ring
- 18-3840 - Coupling shaft
- 18-3841 - Coupling shaft spring
- 18-3844 - Knob
- 18-3845 - Washer
- 18-3848 - Switch support plate
- 18-3852a - Switch support
- 18-3854 - Switch

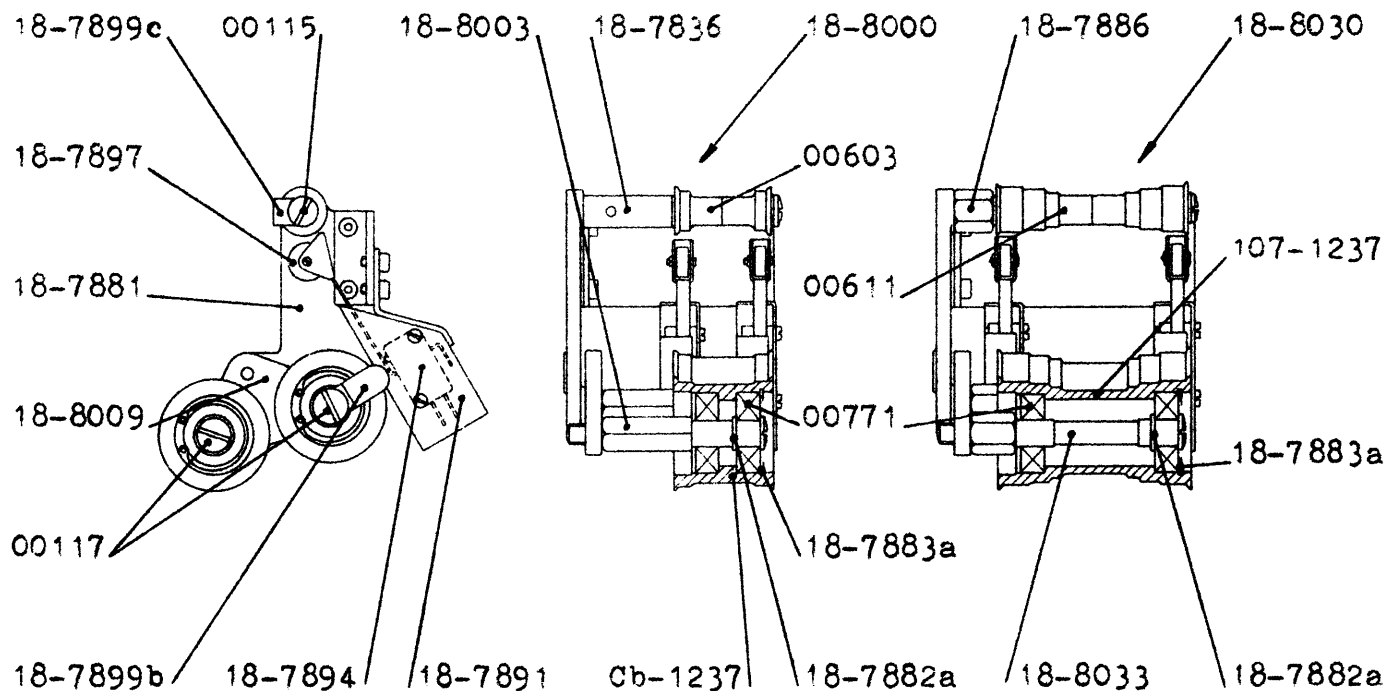


FIG. 19

FIG. 19 - LOWER GUIDE ROLLERS WITH DOUBLE FILM BREAK SWITCH for 35/70 mm

- 00115 - Flanged roller locking screw
- 00117 - Roller locking screw
- 00603 - Flanged roller for 35mm (2 pieces)
- 00611 - Flanged roller for 35/70mm (2 pieces)
- 00771 - Ball bearing
- 18-7836 - 35mm flanged roller spindle
- 18-7881 - Lower guide rollers bracket
- 18-7882a - Circlip - 10mm dia.
- 18-7883a - Circlip - 30mm dia.
- 18-7886 - 35/70mm flanged roller spindle
- 18-7891 - Microswitch support only
- 18-7894 - Microswitch complete with roller and lever
- 18-7897 - Microswitch roller
- 18-7899b - Safety tab for 35mm roller
- 18-7899c - Roller safety tab
- 18-8000 - 35mm lower guide rollers with double film break switch
- 18-8003 - 35mm roller spindle
- 18-8009 - Roller support (machined casting only)
- 18-8030 - 35/70mm lower guide rollers with double film break switch
- 18-8033 - 35/70mm roller spindle
- Cb-1237 - 35mm roller
- 107-1237 - 35/70mm roller

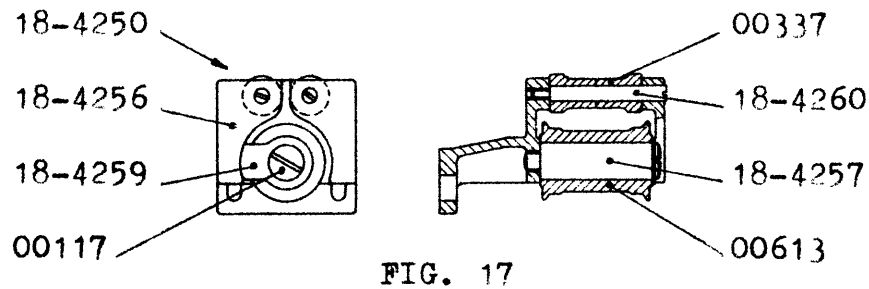


FIG. 17

FIG. 17 - 35mm UPPER GUIDE ROLLERS (up to serial No.84500)

- 00117 - Roller locking screw
- 00337 - Plain roller - 15mm o.d. (6mm dia. hole)
- 00613 - Flanged roller - 33mm o.d. (14mm dia. hole)
- 18-4250 - Upper guide rollers assembly
- 18-4256 - Upper guide rollers bracket
- 18-4257 - Flanged roller spindle
- 18-4259 - Safety tab
- 18-4260 - 6mm dia. spindle for plain roller

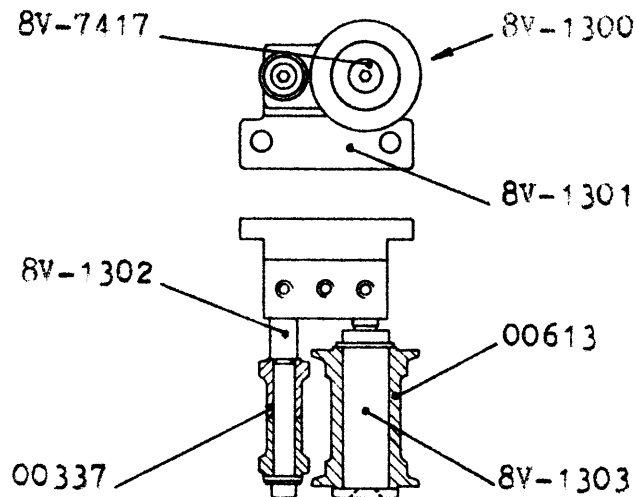


FIG. 18

FIG. 18 - 35mm UPPER GUIDE ROLLERS (from serial No.84501)

- °00337 - Plain roller (15mm o.d.)
- °00613 - Flanged roller (33mm o.d.)
- °8V-1300 - Upper guide rollers assembly
- °8V-1301 - Upper guide rollers bracket
- °8V-1302 - Roller spindle
- °8V-1303 - Flanged roller spindle
- °8V-7417 - Roller fixing washer with screw

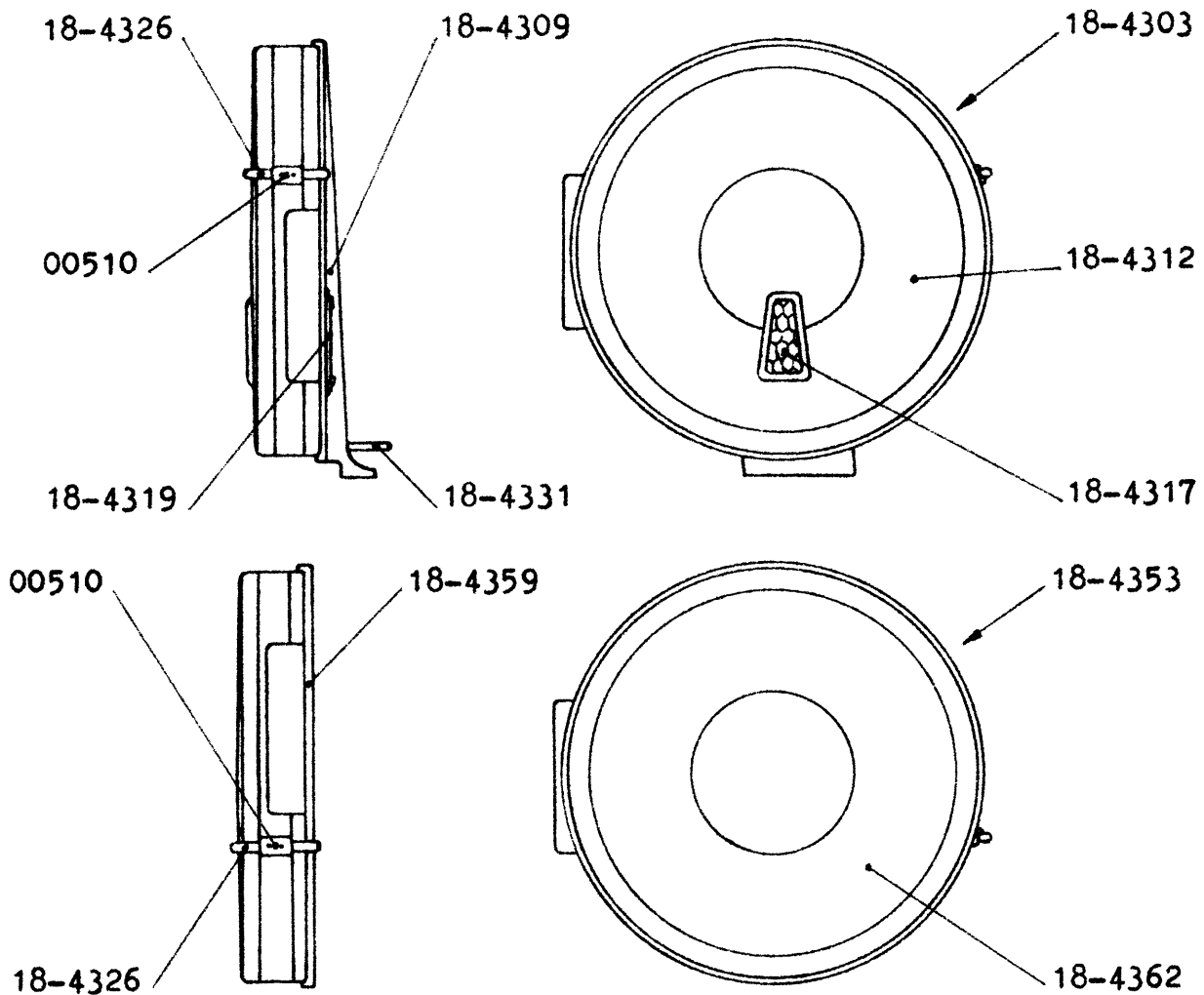


FIG. 20

FIG. 20 - 35mm UPPER AND LOWER SPOOL DISCS AND COVERS

- 00510 - Cover latch bracket with spring
- 18-4303 - 4000 metre upper spool disc and cover
- 18-4309 - Upper spool disc
- 18-4312 - Upper spool disc cover assembly
- 18-4317 - Upper spool disc cover inspection window
- 18-4319 - Upper spool disc inspection window
- 18-4326 - Cover latch
- 18-4331 - Spool support spindle
- 18-4353 - 4000 metre lower spool disc and cover
- 18-4359 - Lower spool disc
- 18-4362 - Lower spool disc cover assembly

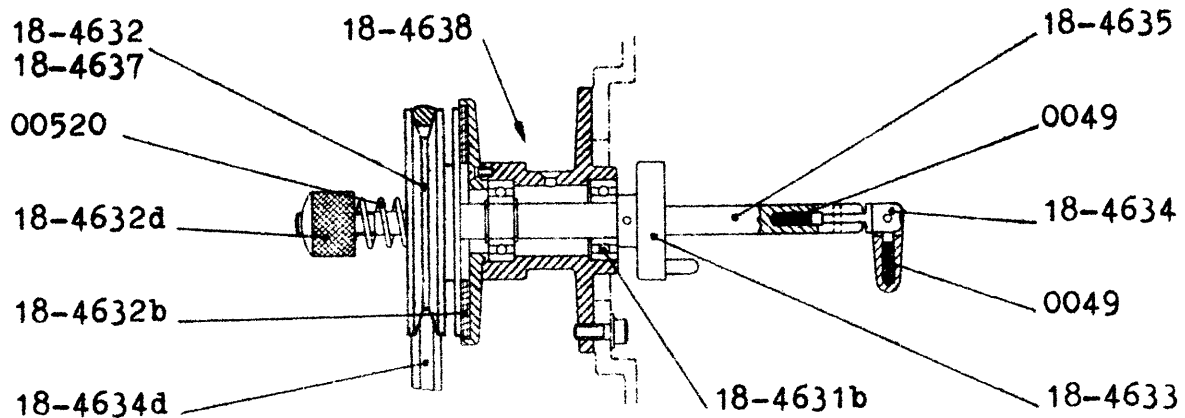


FIG. 21

FIG. 21 - UPPER FEED AND REWIND ASSEMBLY

- 0049 - Spring for spool latch
- 00520 - Clutch spring
- 18-4631b - Ball bearing
- 18-4632 - Rewind pulley assembly up to serial No. 999
- 18-4632b - Clutch felt
- 18-4632d - Clutch spring tension knob
- 18-4633 - Drive pin
- 18-4634 - Intermediate spool latch
- 18-4634d - "V" drive belt type X-153
- 18-4635 - Spindle with double spool latch and drive pin
- 18-4637 - Rewind pulley assembly from serial No. 1000 (outside diameter to be specified)
- 18-4638 - Upper feed and rewind assembly

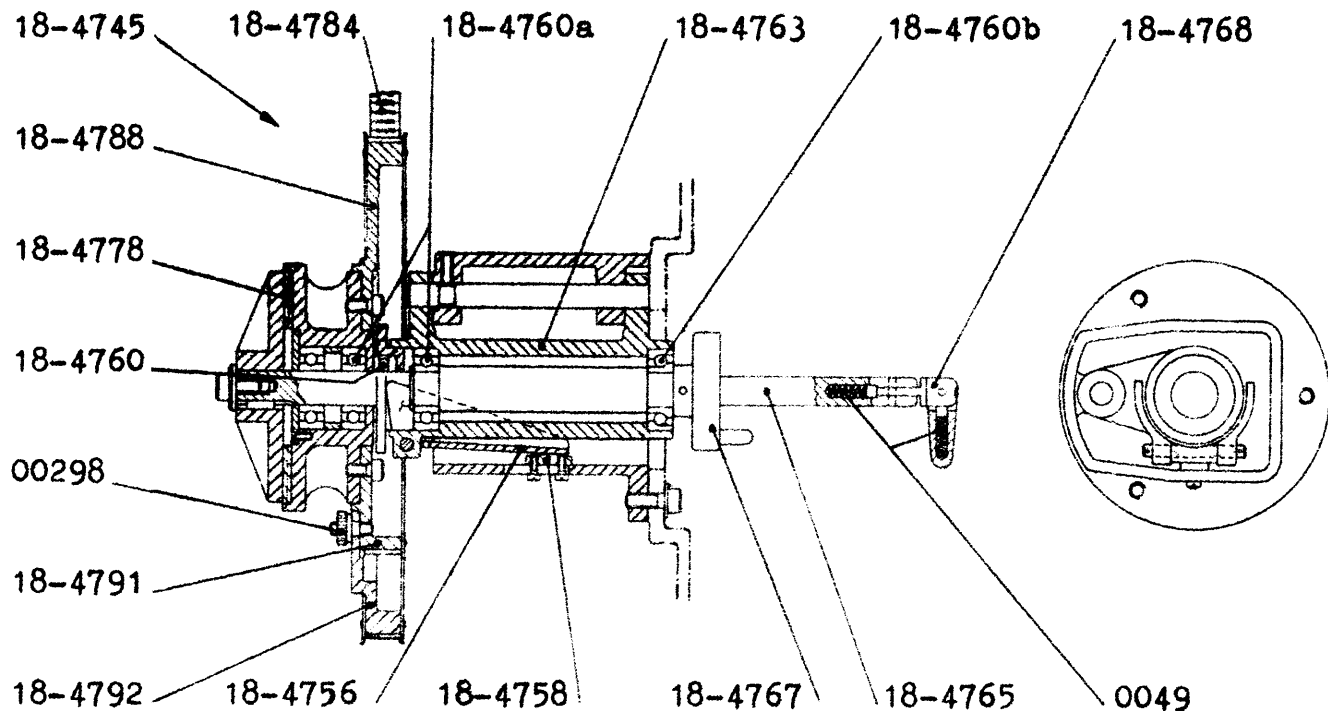


FIG. 22

FIG. 22 - LOWER WEIGHT COMPENSATED TAKE-UP

- 0049 - Spring for spool latch
- 00298 - Pulley knob
- 18-4745 - Lower weight compensated take-up assembly
- 18-4756 - Clutch pressure lever
- 18-4758 - Lever thrust block
- 18-4760 - Axial ball bearing
- 18-4760a - Ball bearing
- 18-4760b - Oblique ball bearing
- 18-4763 - Spool spindle support
- 18-4765 - Spindle with double spool latch and drive pin
- 18-4767 - Drive pin
- 18-4768 - Intermediate spool latch
- 18-4778 - Clutch felt
- 18-4784 - Toothed belt 600L050
- 18-4788 - Toothed pulley - Z.71 - for 35mm only
- 18-4791 - Toothed pulley - Z.47 - for 70mm
- 18-4792 - Toothed pulley - Z.71 - for 35mm

35/70 mm

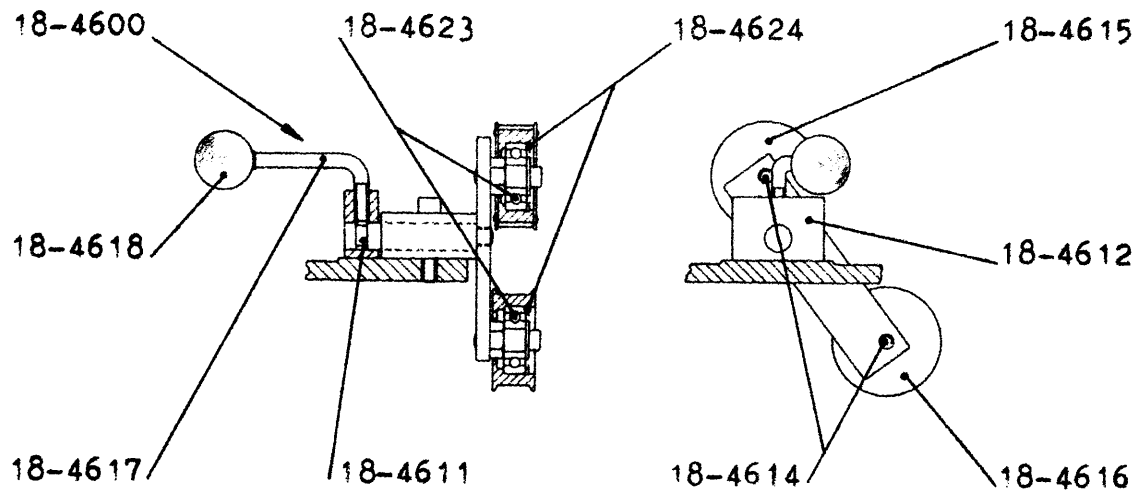


FIG. 23

FIG. 23 - LOWER TAKE-UP DOUBLE BELT IDLER

- 18-4600 - Lower take-up double belt idler assembly
- 18-4611 - Main spindle
- 18-4612 - Main spindle clamp
- 18-4614 - Pulley spindle
- 18-4615 - Toothed pulley
- 18-4616 - Pulley
- 18-4617 - Main spindle clamp lever
- 18-4618 - Lever knob
- 18-4623 - Ball bearing
- 18-4624 - Circlip, 30mm dia.

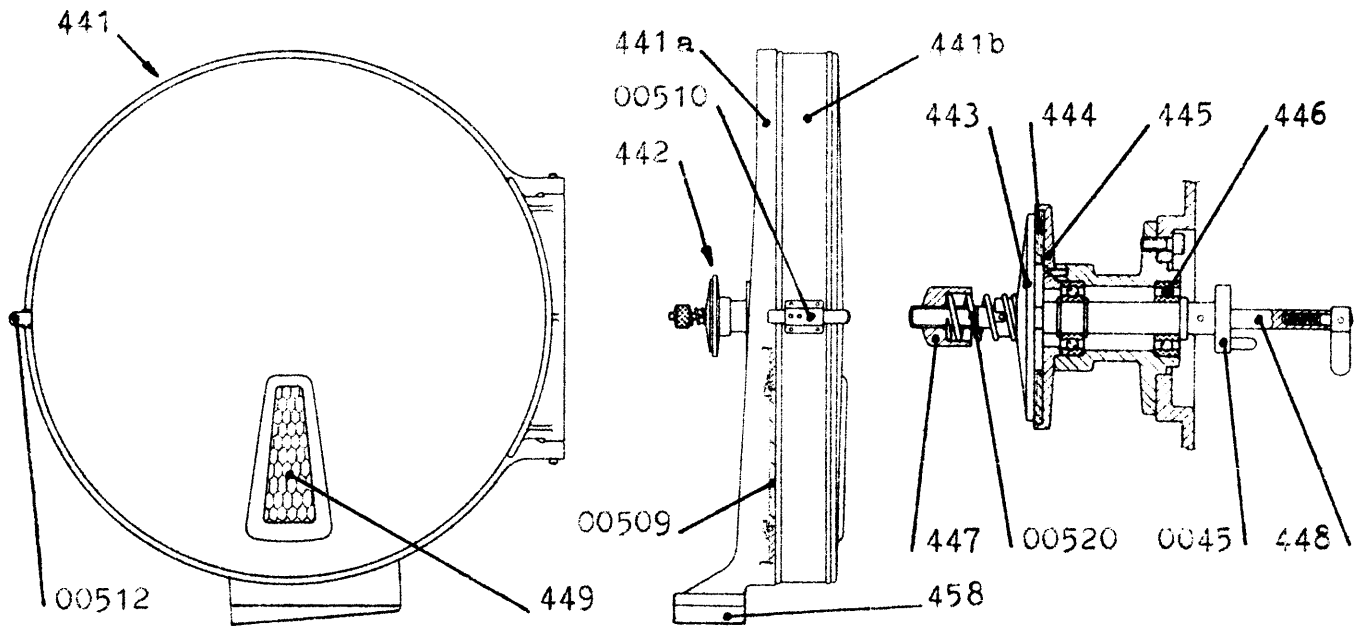


FIG. 24

FIG. 24 - AUXILIARY UPPER SPOOL DISC AND COVER

- °0045 - Spool drive pin
- 00509 - Rear inspection window
- 00510 - Cover latch bracket with spring
- °00512 - Cover latch
- 00520 - Clutch spring
- °441 - Upper spool disc and cover with clutch and shaft
- °441a - Upper spool disc
- °441b - Upper spool disc cover assembly
- °442 - Clutch and shaft assembly
- 443 - Rotating clutch disc
- 444 - Clutch felt
- 445 - Fixed clutch disc
- 446 - Ball bearing
- 447 - Clutch spring tension knob
- °448 - Spool spindle with drive pin, 9mm dia.
- 449 - Front inspection window
- °456 - Spool spindle with drive key, 5/16" dia.
- °457 - Spool spindle with drive pin, 12.7mm dia.
- 458 - Top spool disc wedge

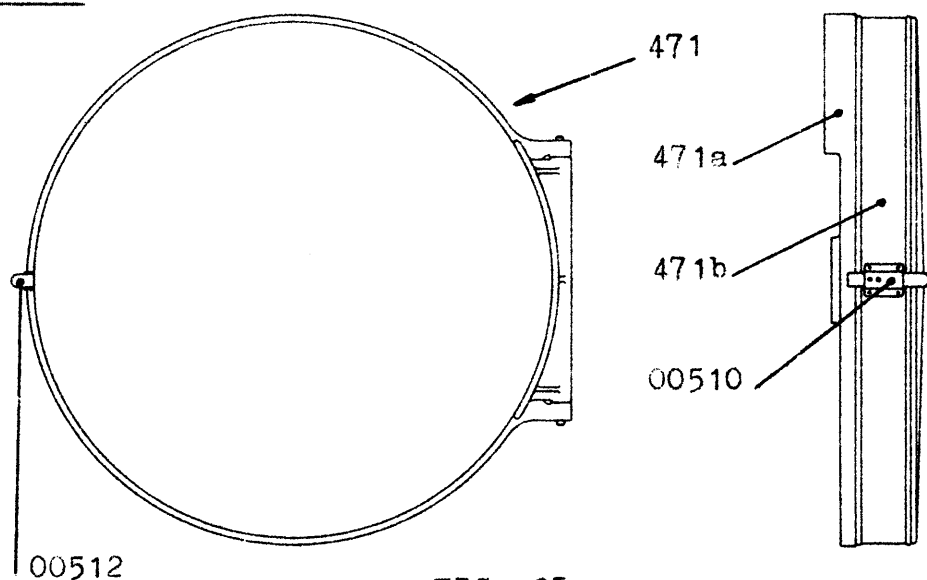


FIG. 25

FIG. 25 - AUXILIARY LOWER SPOOL DISC AND COVER

- 00510 - Cover latch bracket with spring
- °00512 - Cover latch
- °471 - Lower spool disc and cover
(less take-up and shaft)
- °471a - Lower spool disc
- °471b - Lower spool disc
cover assembly

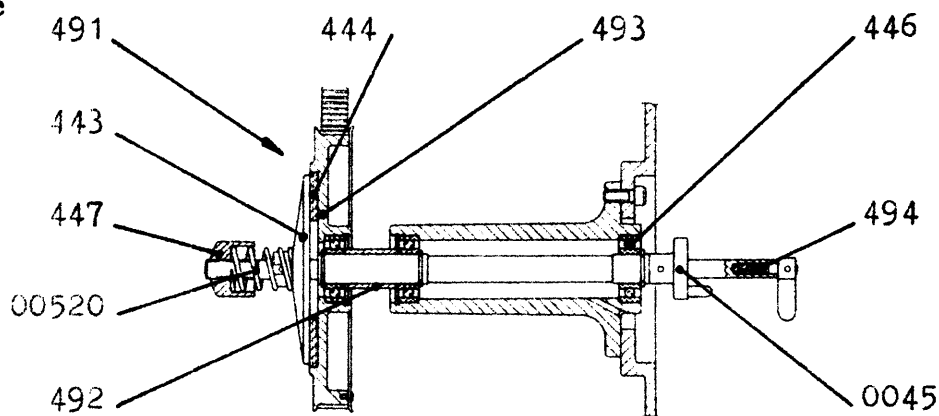


FIG. 26

FIG. 26 - AUXILIARY SPOOL TAKE-UP

- °0045 - Spool drive pin
- °00520 - Clutch spring
- 443 - Rotating clutch disc
- 444 - Clutch felt
- 446 - Ball bearing
- 447 - Clutch spring tension knob
- °491 - Take-up assembly
- °492 - Bush
- 493 - Take-up toothed pulley, Z.47
- °494 - Spool spindle with drive pin, 9mm dia.
- °495 - Spool spindle with drive key, 5/16" dia.
- °496 - Spool spindle with drive pin, 12.7mm dia.

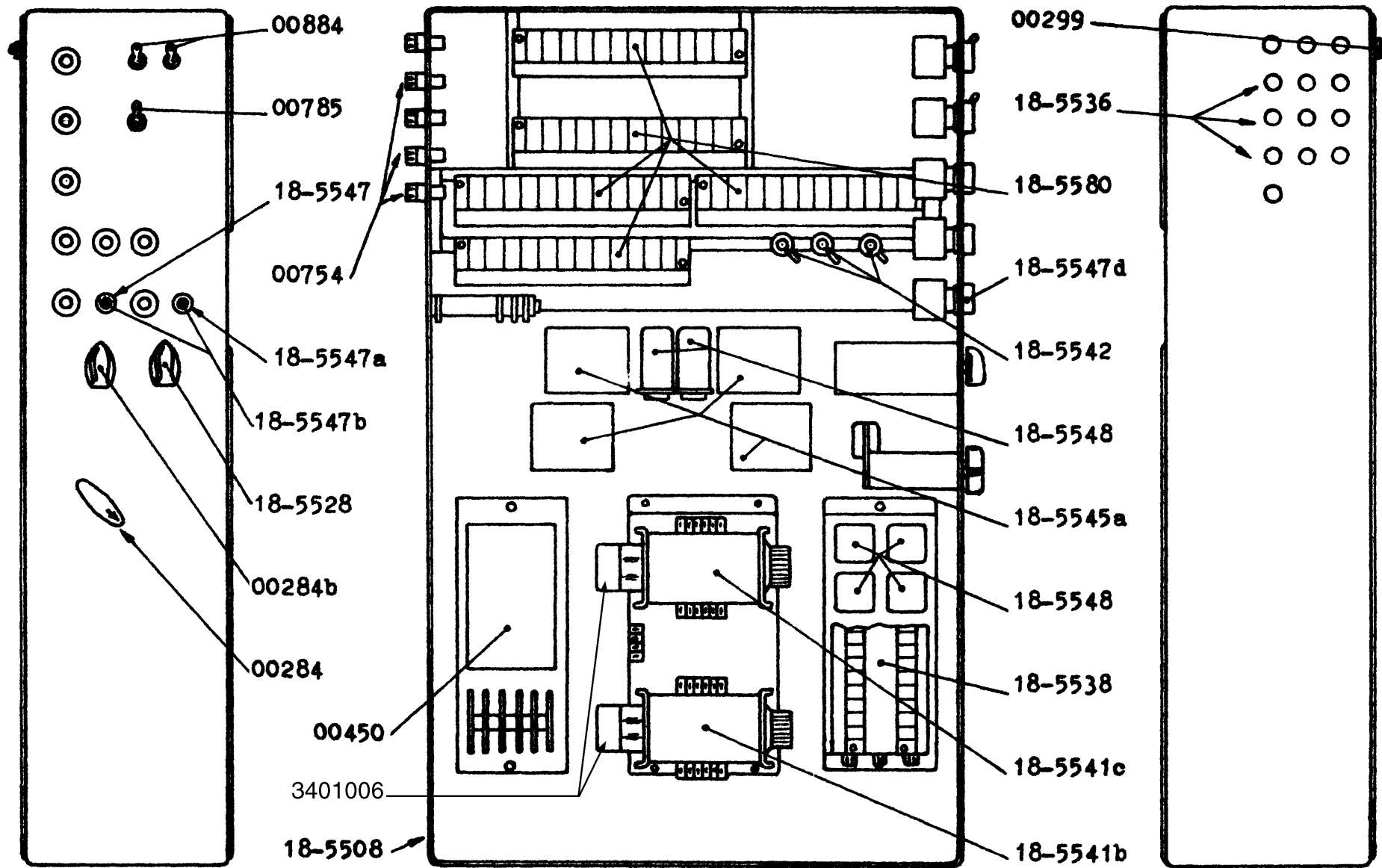


FIG. 24

FIG. 24 SCATOLA IMPIANTO ELETTRICO
AUTOMATICO

00284	Dispos.Mascarini e manopola
00284b	Inserit. motore e manopola
00299	Bottone fissaggio coperchio
00450	Alimentatore lampada eccitaz.
00754	Porta fusibili
00785	Interruttore riavvolgimento
00884	Interr.lampe eccit.e quadro
18-5508	Scatola impianto completa
18-5528	Deviatore MAN-AUT e manopola
18-5536	Fusibili 1A - 5A - 10A
18-5538	Piastra relè tourelle compl.
◦18-5541b	Programm. START (dal n.84323)
◦18-5541c	Programm. STOP (dal n.84323)
18-5542	Resistenze (precisare Ohm)
18-5545a	Teleruttori motori (dal n.914)
18-5547	Porta lampada spia bianco
18-5547a	Porta lampada spia rossa
18-5547b	Lampadina neon 220 V
18-5547d	Pulsanti comandi vari
18-5548	Relè con zoccolo (dal n.908)
18-5580	Morsettiere
3401006	Motore programm.

FIG. 24 BOITE EQUIPMENT ELEC-
TRIQUE AUTOMATIQUE

Dispos.Mascarini avec poignée
Interr. moteur avec poignée
Bouton blocage couvercle
Alimentateur lampe excitation
Porte fusibles
Interrupteur enroulement
Interr.lampe excit.et cadrage
Boite équipement complet
Interr. MAN-AUT avec poignée
Fusibles 1A - 5A - 10A
Plaque relais tourelle compl.
Programm. START (du n. 84323)
Programm. STOP (du n. 84323)
Résistances (préciser Ohm)
Téléruteurs moteurs (du n.914)
Porte-lampe témoin blanc
Porte-lampe témoin rouge
Lampe néon 220 V
Poussoirs pour les commandes
Rélais avec socle (du n.908)
Bornes
Moteur programm.

FIG. 24 AUTOMATIC WIRING
CONTROL BOX

Mascarini device with handle
Motor start switch with handle
Cover locking knob
Exciter lamp power supply
Fuse holder
Take-up switch
Framing-exciter lamp switches
Wiring control box
MAN-AUTO switch with handle
Fuses 1A - 5A - 10A
Turret control unit
START timer (from n. 84323)
STOP timer (from n. 84323)
Resistors(Ohm to be specified)
Motor contactors (from n. 914)
White pilot lamp holder
Red pilot lamp holder
Neon lamp 220 V
Control push buttons
Relay with socket (from n.908)
Terminal boards
Timer motor only

◦ N.L.A. - no longer available

RICAMBI

◦18-5541	Progr.START (fino al n.84322)
◦18-5541a	Progr.STOP (fino al n.84322)
18-5543	Relè con zoccolo (fino al n. 907)
18-5545	Teleruttori motori (fino al n. 913)

RECHANGES

Progr.START (jusqu'au n.84322)
Progr.STOP (jusqu'au n.84322)
Rélais avec socle (jusqu'au n. 907)
Téléruteurs moteurs (jusqu'au n. 913)

SPARES

START timer (up to serial n.84322)
STOP timer (up to serial n.84322)
Relay with socket (up to serial n. 907)
Motor contactors (up to serial n. 913)