

# FILM-TECH

**THE INFORMATION CONTAINED IN THIS ADOBE ACROBAT PDF FILE IS PROVIDED AT YOUR OWN RISK AND GOOD JUDGMENT.**

**THESE MANUALS ARE DESIGNED TO FACILITATE THE EXCHANGE OF INFORMATION RELATED TO CINEMA PROJECTION AND FILM HANDLING, WITH NO WARRANTIES NOR OBLIGATIONS FROM THE AUTHORS, FOR QUALIFIED FIELD SERVICE ENGINEERS.**

**IF YOU ARE NOT A QUALIFIED TECHNICIAN, PLEASE MAKE NO ADJUSTMENTS TO ANYTHING YOU MAY READ ABOUT IN THESE ADOBE MANUAL DOWNLOADS.**

**[WWW.FILM-TECH.COM](http://WWW.FILM-TECH.COM)**



AUTHORIZED DISTRIBUTOR:  
**JARCO INDUSTRIES**  
TOLL FREE ORDERING 800-458-7578  
WWW.CONCESSIONSTANDS.COM

Part No. 87630  
Revised Mar. 2000

# *Roller Dog*

## **Instruction Manual**

Model #8023, Model #8024 and Model #8025  
Model #8023SL, Model #8024SL and Model #8025SL




# **GOLD MEDAL®**


## **FUNFOOD EQUIPMENT & SUPPLIES**


Cincinnati, OH 45241-4807 USA


e-mail: [goldme19@eos.net](mailto:goldme19@eos.net) • [www.gmpopcorn.com](http://www.gmpopcorn.com)


# SAFETY PRECAUTIONS

	<b>⚠ CAUTION</b>
	<p>This equipment is designed and sold for commercial use only. This equipment is not to be used by the consumer in home use. Do not allow direct contact of this equipment by the public when used in food service locations. Only personnel trained and experienced in the equipment operation may operate this equipment. Carefully read all installation instructions before operating the equipment.</p>

	<b>⚠ WARNING</b>
	<p>Always wear safety glasses when servicing this equipment.</p>

	<b>⚠ WARNING</b>
	<p>To avoid serious burns, do NOT touch the kettle while it is hot.</p>

	<b>⚠ WARNING</b>
	<p>Any alterations to this equipment will void the warranty and may cause a dangerous situation. NEVER make alterations to the equipment. Make sure all machine switches are in the OFF position before plugging the equipment into a receptacle.</p>

	<b>⚠ DANGER</b>
	<p>Machine must be properly grounded to prevent electrical shock to personnel. Do NOT immerse the kettle, warmer, or any other part of this equipment in water. Always unplug the equipment before cleaning or servicing.</p>

## NOTE

The information, specifications and illustrations contained in this manual represent the latest data available at time of publication. Right is reserved to make changes as required at the discretion of Gold Medal Products Company without notice.

## **INSTALLATION**

Install the Roller Dog in a level position. Connect the lead-in cord to a suitable outlet of correct voltage.

### **CONNECTION LOAD**

A.C. only. Wattage and voltage as indicated on nameplate. Use grounded 120V A.C. circuit.

## **OPERATING PROCEDURES**


1. Place hot dogs on rollers. Turn heat to designated temperature. Left knob controls the heat of one set of five (5) rollers and the right controls the other set of five (5) rollers.
2. For low heat, set control(s) to LOW using one or both sets of rollers. For high capacity, set control(s) to MEDIUM or HIGH using both sets of rollers.


## **CARE AND CLEANING INSTRUCTIONS**


Although corrosion resistant, stainless steel should be cleaned daily to prevent pitting. Do NOT use steel wool to clean, stainless steel wool can be used.

1. **!! UNPLUG THE POWER CORD FROM THE OUTLET !!**
2. Remove any remaining hot dogs from rollers.
3. Remove drip pans and clean thoroughly.
4. Use a mild detergent, soap and water, or soda-water to clean the roller grill. Rinse after washing and dry thoroughly before using.
5. For stubborn spots or stains a mild household abrasive cleaner can be used. When applying abrasive cleaners always rub in the direction of the grain to preserve metal finish.
6. When unit has been thoroughly cleaned, rinsed and dried, reinsert drip pans beneath the rollers.
7. The unit is now cleaned and ready for operation.

## MAINTENANCE INSTRUCTIONS

	<b>⚠ CAUTION</b>
	<p>THE FOLLOWING SECTIONS OF THIS MANUAL ARE INTENDED ONLY FOR QUALIFIED SERVICE PERSONNEL WHO ARE FAMILIAR WITH ELECTRICAL EQUIPMENT. THESE ARE NOT INTENDED FOR THE OPERATOR.</p>

	<b>⚠ WARNING</b>
	<p>Adequate eye protection must be used when servicing this equipment to prevent the possibility of injury.</p>

	<b>⚠ DANGER</b>
	<p>Do NOT immerse the equipment in water. Unplug your machine before servicing.</p>

### REPLACING THE HEAT ELEMENT

1. Remove the four (4) screws on the bottom of unit which secure the end covers to the unit. Withdraw the end covers from the housing by pulling them downward and out of the unit.
2. Unscrew the five (5) screws which fasten the conductor plate (P/N 87898) to the heat elements at the non-chained end of the elements.
3. Unscrew the screw which holds the other end of the heat element in place.
4. Turn the heat element 90 degrees and withdraw it from the roller tube.
5. Install a new heat element in the same manner in which it was withdrawn from the roller tube. The heat element should be oriented such that the heat element is situated approximately in-line with the center of the roller tube. The screw lugs at each end of the heat element should be oriented vertically.
6. Reinstall the screw and fasten to the heat element at the chained end of the roller tube.
7. Reinstall the five (5) screws and fasten the conductor plate to the heat elements. Be sure that all five heat elements are installed similarly.
8. Reinstall the end covers.

## **ORDERING SPARE PARTS**

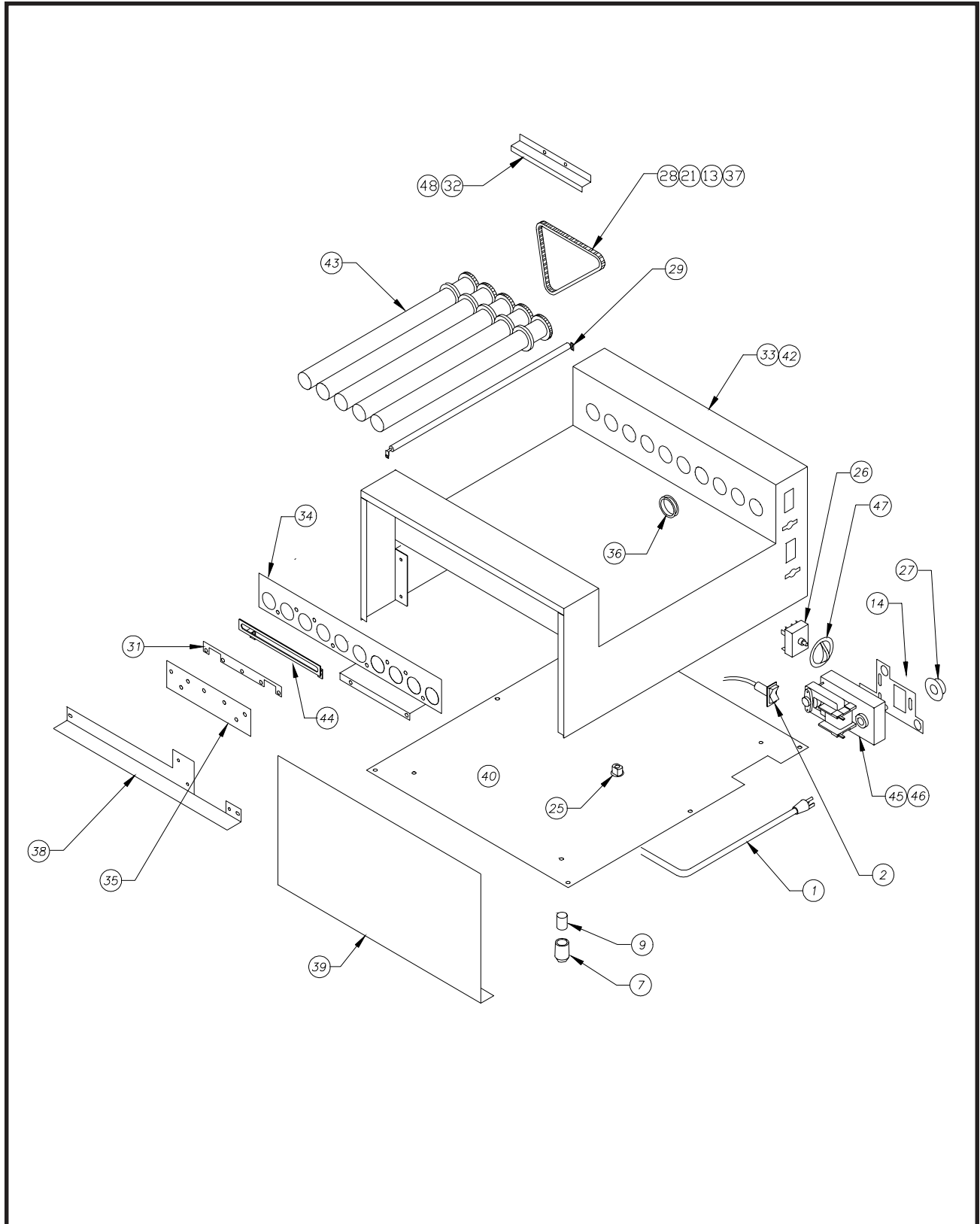
1. Identify the needed part by checking it against the photos, illustrations, and/or the parts list.
2. When ordering, please include part number, part name, and quantity needed.
3. Please include your model name and machine serial number (located on the machine nameplate) with your order.
4. Address all parts orders to:

Jarco Industries

order toll free 800-458-7578

or order online at [www.concessionstands.com](http://www.concessionstands.com)

# ROLLER DOG ASSEMBLY



## PARTS LIST – ROLLER DOG ASSEMBLY

Model #	8023	8024	8025		
	8023SL	8024SL	8025SL		
Item No.	Part No.	Part No.	Part No.	Description	Quantity
1	22038			Power Cord	1
2	40320			Rocker Switch	2
3	42044			#8 Screw	8
4	42828			#10 Screw	6
5	47010			Safe Operating Instructions	1
6	47130			#8 Screw	6
7	47155			Rubber Feet	4
8	87314			#8 Screw	6
9	47328			Glide Feet	4
10	67137			Wiring Diagram Label	1
11	87630			Manual	1
12	67204			Motor Grommet	6
13	87591			Drive Chain **	2
14	87594			Motor Plate	2
15	67198	67213	67214	Carton	1
16	74117			#8 Washer	1
17	74143			#10 Nut	18
18	74149			#8 Nut	1
19	74150			#8 Lock Washer	6
20	76097			Unplug to Clean, Label	1
21	87044			Master Link	2
22	87087			Warning Label	4
23	87092			Tongs	1
24	87149			Caution Label	2
25	87163			Strain Relief	1
26	87352			Heat Switch	2
27	87353			Sprocket	2
28	87590			Lower Drive Chain ***	1
29	67172	87376	87358	Heat Element	10
30	87392			Set Screw	2
31	87898			Conductor Plate	2
32	87933			Outer Chain Support	2
33	87910	87906	87908	Main Body Weldment ***	1
34	87901			Assembly Mtg. Bracket	2
35	87899			Insulator Board	2
36	87479			Teflon Bearing	20
37	87591			Upper Drive Chain ***	1
38	87595			Mtg. Bracket	2
39	87601			End Cover	2
40	87647	87602	87634	Bottom Cover	1
41	87646	87606	87636	Drip Pan	1
42	87903	87912	87914	Main Body Weldment **	1
43	87650	87593	87633	Roller Assembly	10
44	87900			Element Support	2
45	87531			Motor CW	1
46	87532			Motor CCW	1
47	87540			Knob	2
48	87934			Inner Chain Support	2

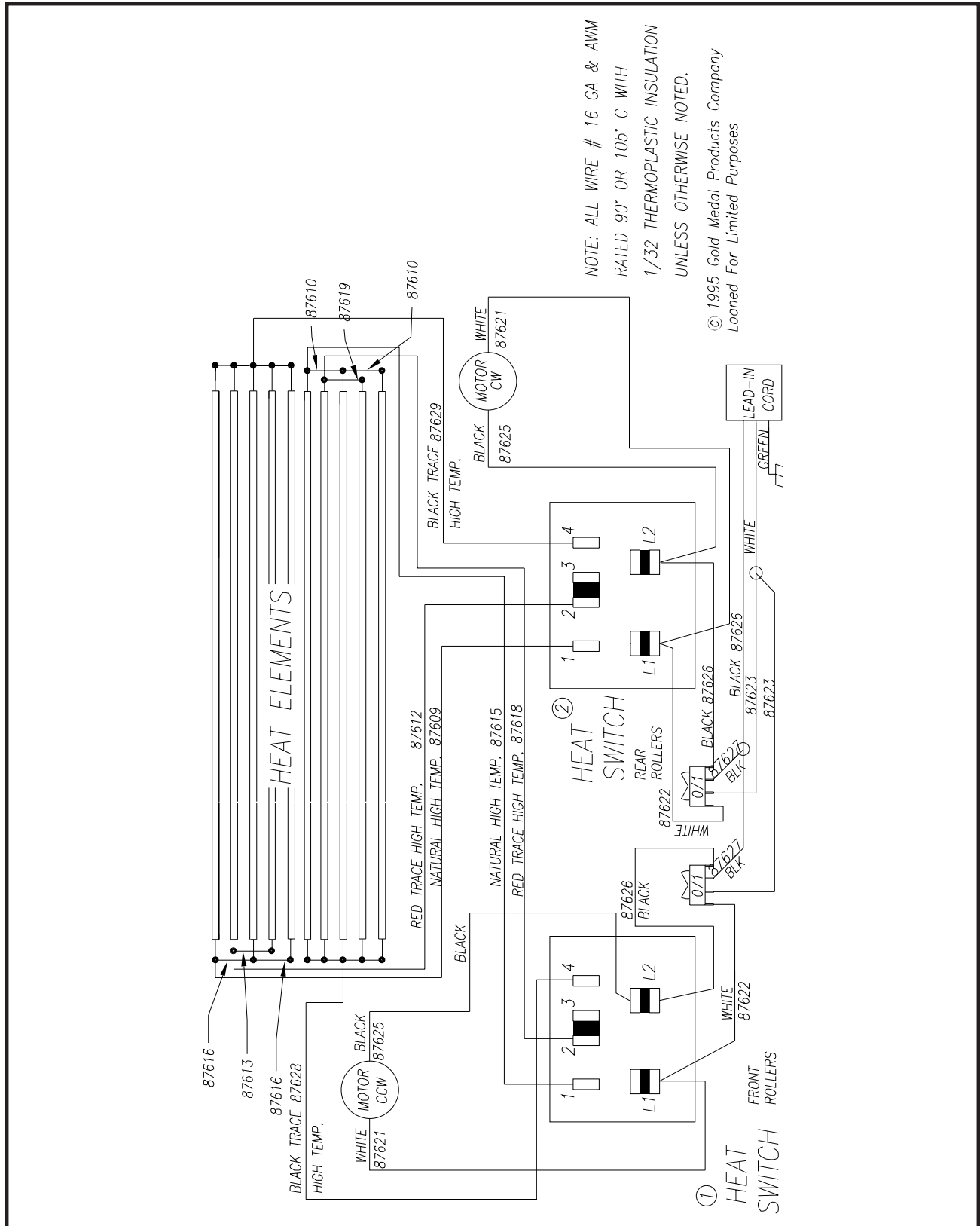
**NOTE:** Part Numbers are the same unless otherwise noted.

\*\* 8023, 8024, 8025 ONLY

\*\*\* 8023SL, 8024SL, 8025SL ONLY



# WIRING DIAGRAM



NOTE: ALL WIRE # 16 GA & AMM  
 RATED 90° OR 105° C WITH  
 1/32 THERMOPLASTIC INSULATION  
 UNLESS OTHERWISE NOTED.

© 1995 Gold Medal Products Company  
 Loaned For Limited Purposes