

FILM-TECH

THE INFORMATION CONTAINED IN THIS ADOBE ACROBAT PDF FILE IS PROVIDED AT YOUR OWN RISK AND GOOD JUDGMENT.

THESE MANUALS ARE DESIGNED TO FACILITATE THE EXCHANGE OF INFORMATION RELATED TO CINEMA PROJECTION AND FILM HANDLING, WITH NO WARRANTIES NOR OBLIGATIONS FROM THE AUTHORS, FOR QUALIFIED FIELD SERVICE ENGINEERS.

IF YOU ARE NOT A QUALIFIED TECHNICIAN, PLEASE MAKE NO ADJUSTMENTS TO ANYTHING YOU MAY READ ABOUT IN THESE ADOBE MANUAL DOWNLOADS.

WWW.FILM-TECH.COM

NO. 266

FEBRUARY, 1988

SERVICE MANUAL

CX-550 XENON

CX-550 Xenon projector is a sister model of CX-350 Xenon projector and incorporates 550W brighter Xenon-arc lamp and 80W powerful amplifier.

The specifications and operation procedure of CX-550 Xenon are the same as those of CX-350 Xenon except xenon-arc lamp and amplifier.

For servicing the projector, please refer to the service manual for CX-350 Xenon along with this service manual for CX-550 Xenon.

ELMO CO., LTD.

CONTENTS

	Page
I. GENERAL INTRODUCTION	
1 - 1 Specifications	1 - 2
1 - 2 Difference in Specifications	3
1 - 3 Layout of Electrical parts (Outside view)	4
II. DRIVING MECHANISM	
II - 1 Rewinding Mechanism	5 - 6
II - 2 Xenon-arc Lamp	7 - 8
II - 3 Amplifier Assembly	9 - 10
III. ELECTRICAL CIRCUIT	
III - 1 Amplifier Circuit (Trouble-shooting Hints)	11 - 12
III - 2 Schematic Diagram (Amplifier Section)	13
III - 3 Layout Diagram of Electrical Parts	14
III - 4 Schematic Diagram (Machine Section)	15
III - 5 Connection Diagram (Machine Section)	16
III - 6 Layout Diagram of Electrical Parts	17
(High-Tension Circuit section)	17

1. GENERAL INTRODUCTION

1 - 1 Specifications

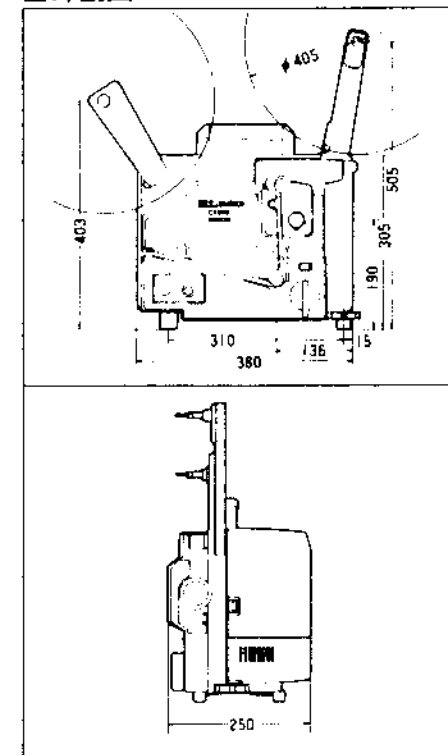
Item	Model Name	CX-550 Xenon	CX-350 Xenon
Ratings:	Power source	Single phase, AC 50/60 Hz	←
	Reel capacity	Max. 720 m (2400 ft) usable; supplied reel: Auto-winding type with capacity of 480 m (1600 ft)	←
Projection Mechanism Section:	Projection speed	24 fps	←
	Film	Optical and magnetic sound films of 16 mm, laser optical sound film	←
	Projection lens	Standard lens 50 mm f/1.2	←
	Projection lamp	550W Xenon arc lamp	350W Xenon arc lamp
	Power source	Switching regulator type with low power consumption	←
	Condensing (optical) system	Horizontal light condensing system dichroic mirror (cold mirror)	←
	Motor	Induction motor	←
	Film threading	Channel loading	←
	Loop restorer	Automatic	←
	Quick review	Possible	←
	High speed rewinding	Possible	←
	Remote control	Possible (lamp, motor, douser); cord: 8 m	←

Model Name		CX-550 Xenon	CX-350 Xenon
Item			
Sound Playback System:	Amplifier	All IC's	←
	Output	Max. 80W (8Ω load)	Max. 40W (8Ω load)
	Tone control	Possible	←
	Public address	Possible (microphone impedance: 500Ω ~ 10 kΩ)	←
	Speaker	12.5 cm dynamic speaker × 1	←
	AUX output	AUX output terminal (600Ω MAX 0 db) provided	←
Dimensions and Weight:	Dimensions	L380 mm × W250 mm × H305 mm (Installation width of front cover with speakers = 310 mm)	L380 mm × W250 mm × H305 mm (Installation width of front cover with speakers = 300 mm)
	Weight	Main body: 15.4 kg, Front cover with speakers: 2 kg	Main body: 15.0 kg, Front cover with speakers: 2 kg

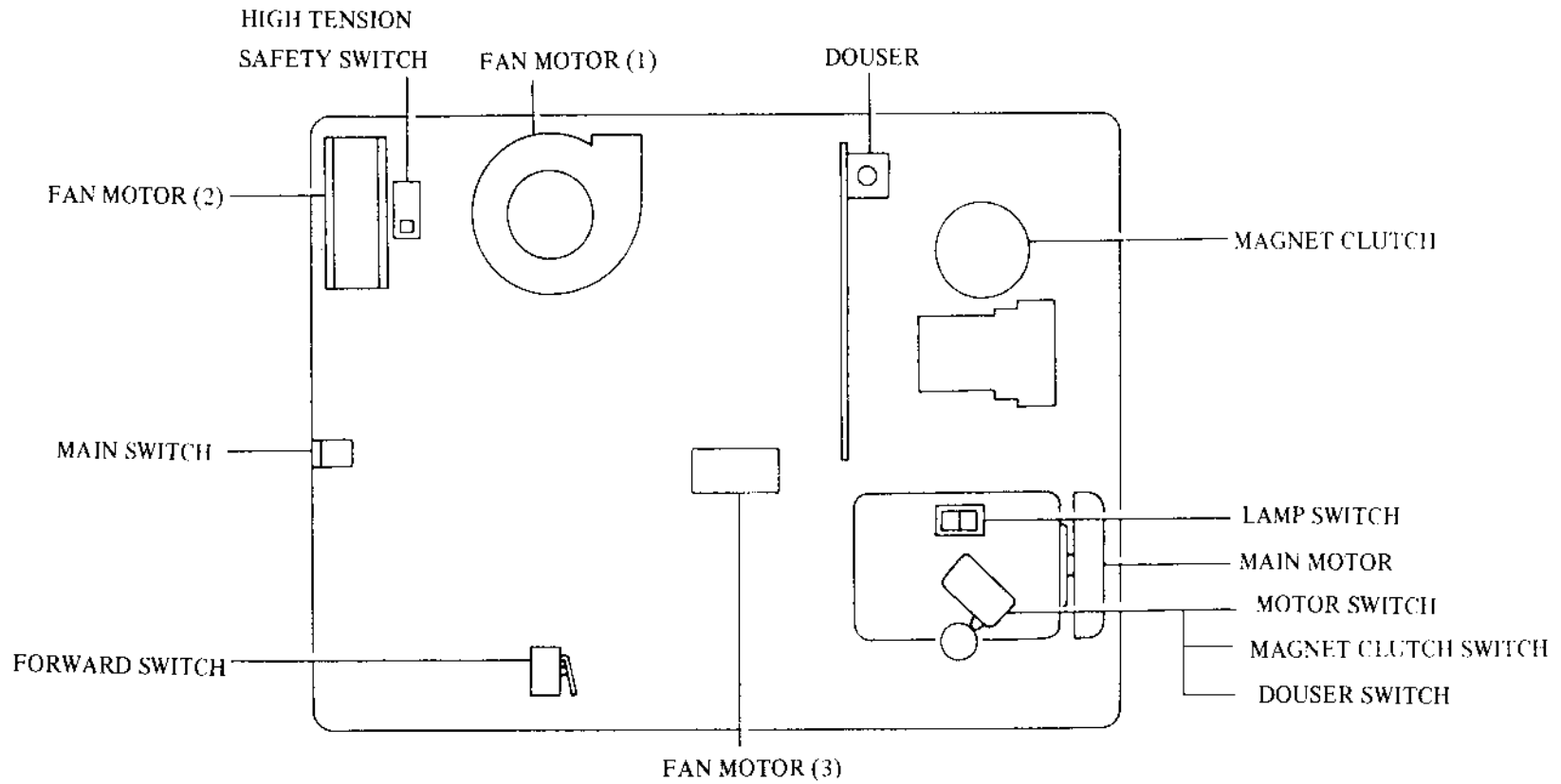
I - 2 Differences in Specifications

Model Name	CX-550 XENON	CX-350 XENON
Item		
Projection Lamp	550W	350W
Amplifier Output (w/8 ohm load)	Rated : 50W Max. : 80W	Rated : 25W Max. : 40W
Cooling Fan Motor	3 pcs.	2 pcs.
Power Consumption	1 KVA	750 VA
Dimensions (Exclude carrying handle part)	L380 × W250 × H305 (Installation width of front cover speakers = 310 mm)	L380 × W250 × H305 (Installation width of front cover speakers = 300 mm)
Weight (Front cover with speakers)	15.4 kg 2 kg	15.0 kg 2 kg

■ 外觀図



I - 3 Layout of Electrical Parts (Outside view)



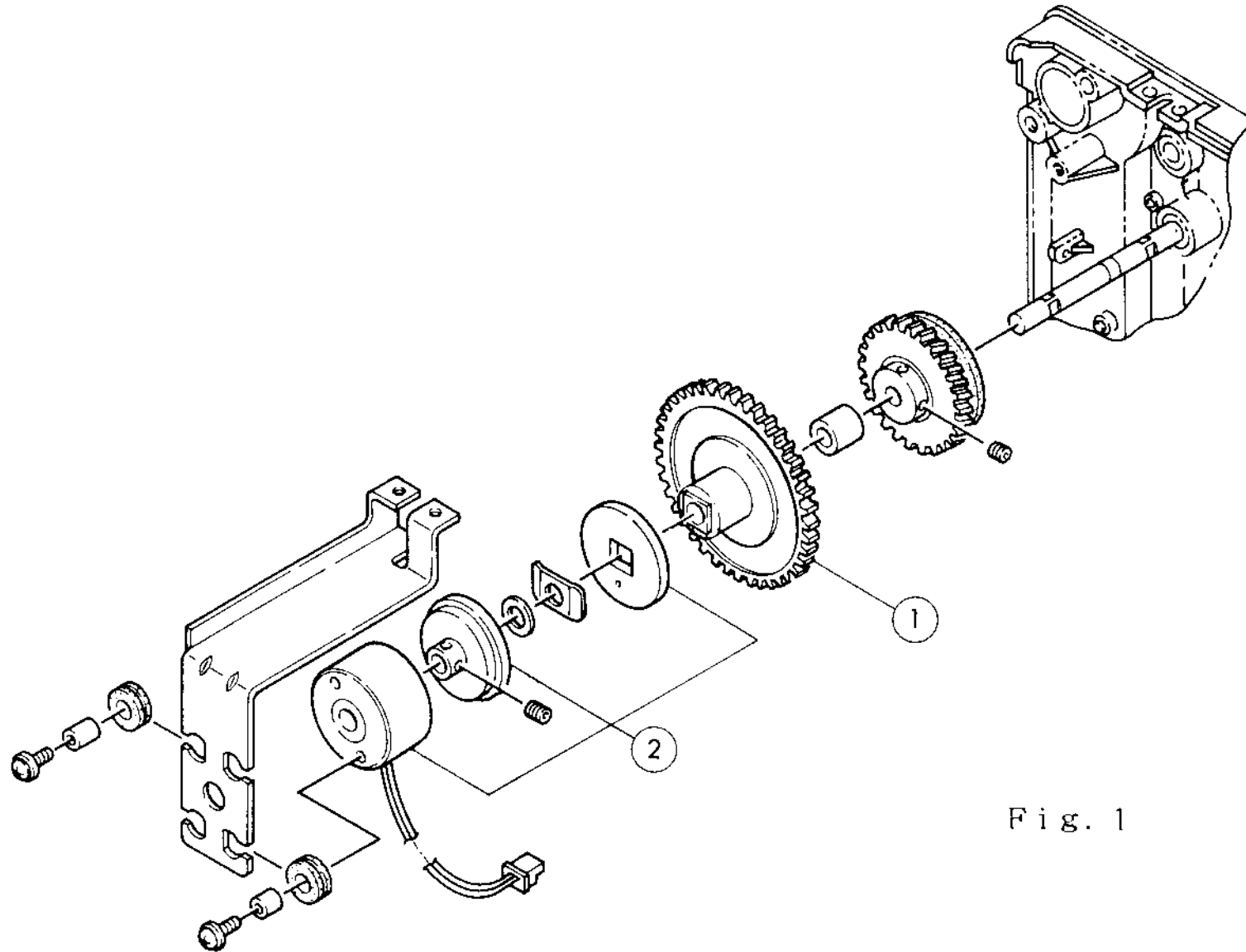


Fig. 1

II. DRIVING MECHANISM

Driving mechanisms of CX-550 Xenon are almost same as those of CX-350 Xenon and that this service manual shows only exclusive parts for CX-550 Xenon.

II - 1 Rewinding Mechanism

Differences in Rewinding Mechanism Section

Model Name	CX-550 Xenon	CX-350 Xenon
Abbr. No.		
①	P/N 4M45795	P/N 4M41027
②	6Y49491008	6Y49491006
	—	6B10801601

As to disassembly and reassembly procedure, please refer to service manual for CX-350 Xenon (p. 40 ~ p. 42).

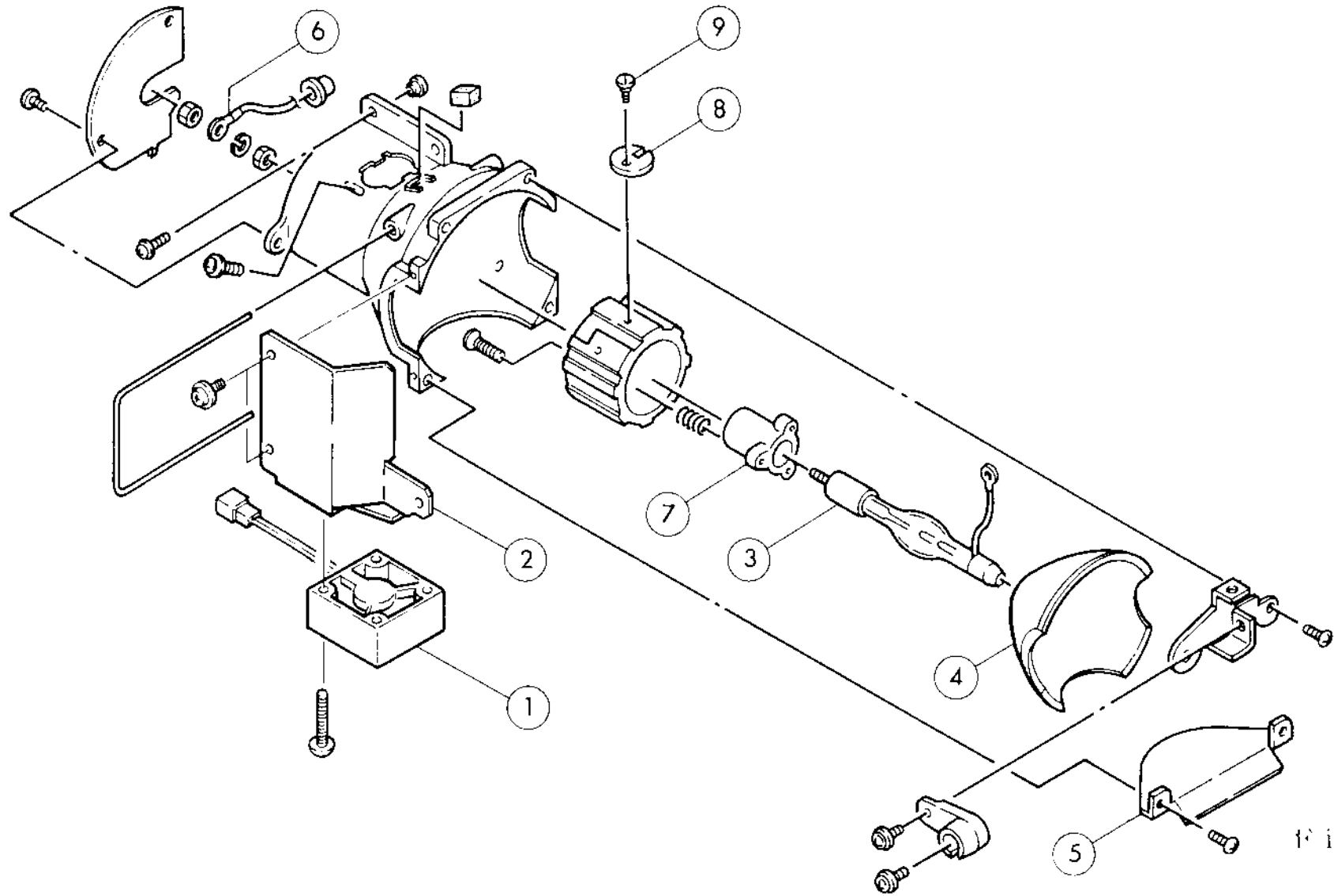


Fig. 2

II - 2 Xenon-arc Lamp

Differences in Xenon-arc Lamp Section

Model Name	CX-550 Xenon	CX-350 Xenon
Abbr. No.		
①	P/N 4K02480	
②	4M46071	P/N 4M31167
③	4M45662	4E44039
④	4L30020	4L30018
⑤	4M46069	4M44192
⑥	4K02474	4K01946
⑦	4M46070	4E43055
⑧	P313883C	P413883
⑨	6M7B401001	4P55928

As to disassembly and reassembly procedure, please refer to service manual for CX-350 Xenon (p. 60).

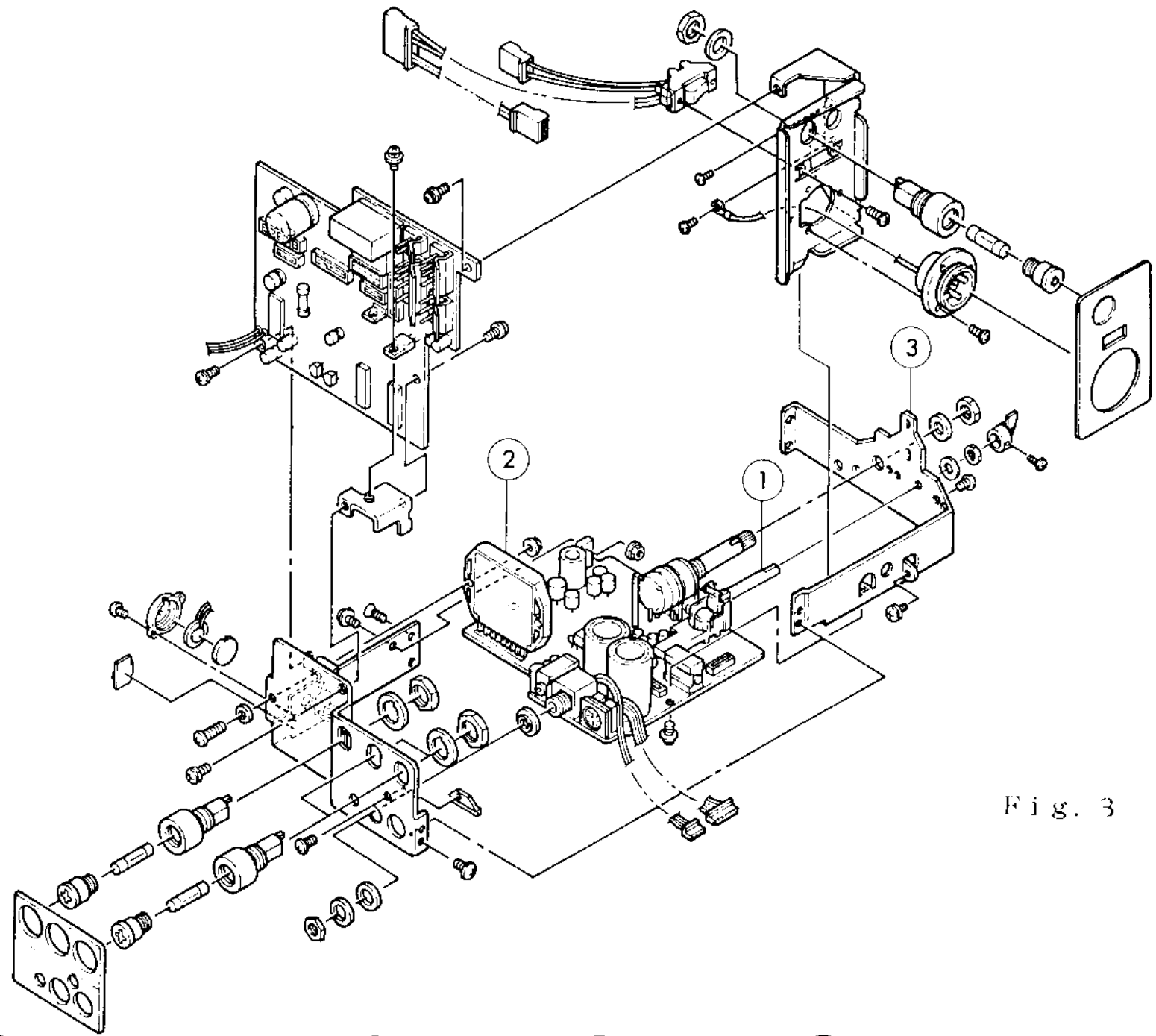


Fig. 3

II - 3 Amplifier Assembly

Difference in Amplifier Assembly

Model Name Abbr. No.	CX-550 Xenon	CX-350 Xenon
①	P/N 5E3023 ---	P/N 5E5072 4M42699 4M42701 4M42700
②	5ASTK4136	5ASTK080
③	4M46103	4M20372

As to disassembly and reassembly procedure, please refer to service manual for CX-350 (p. 58).

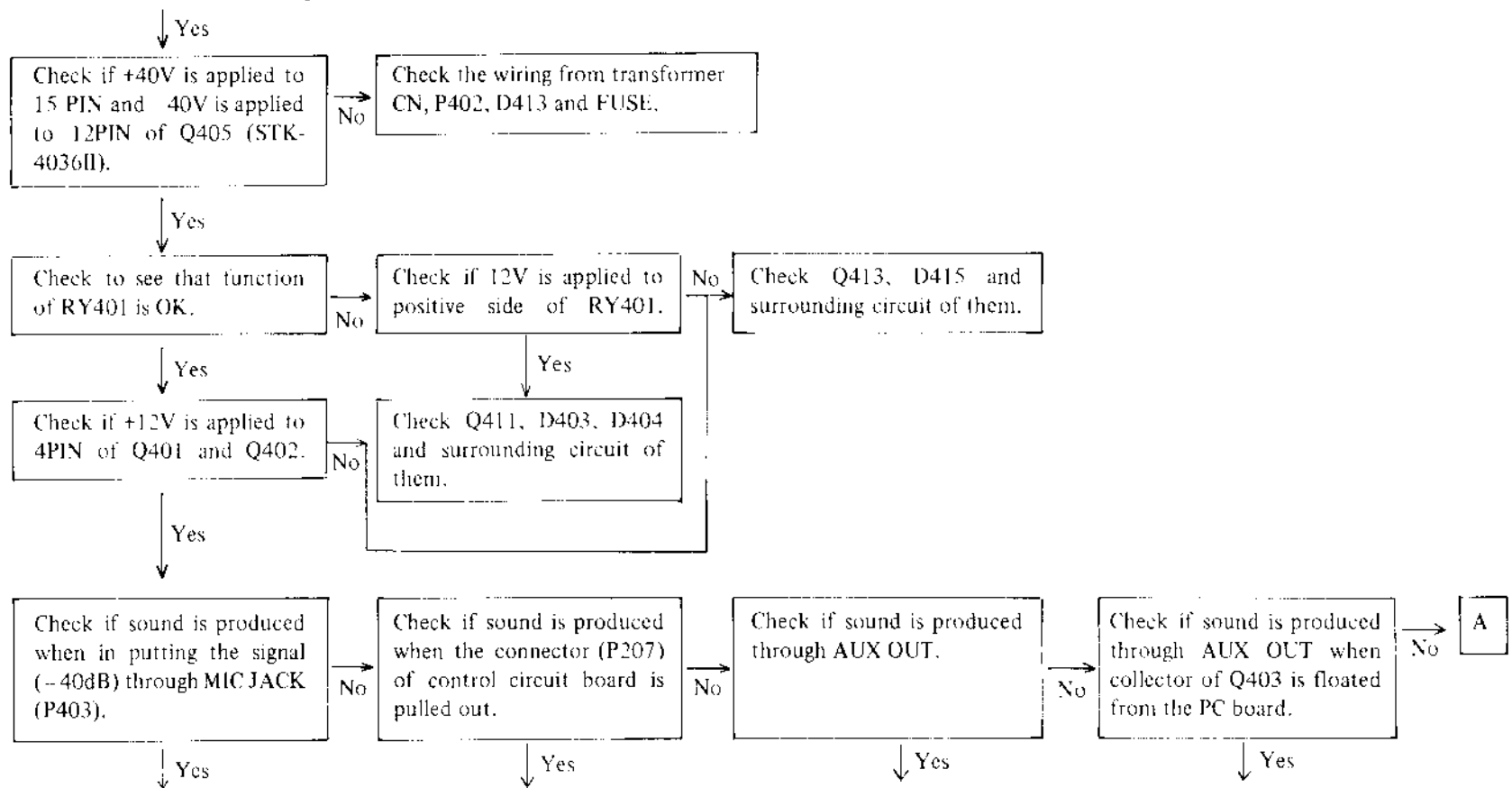
III. ELECTRICAL CIRCUIT

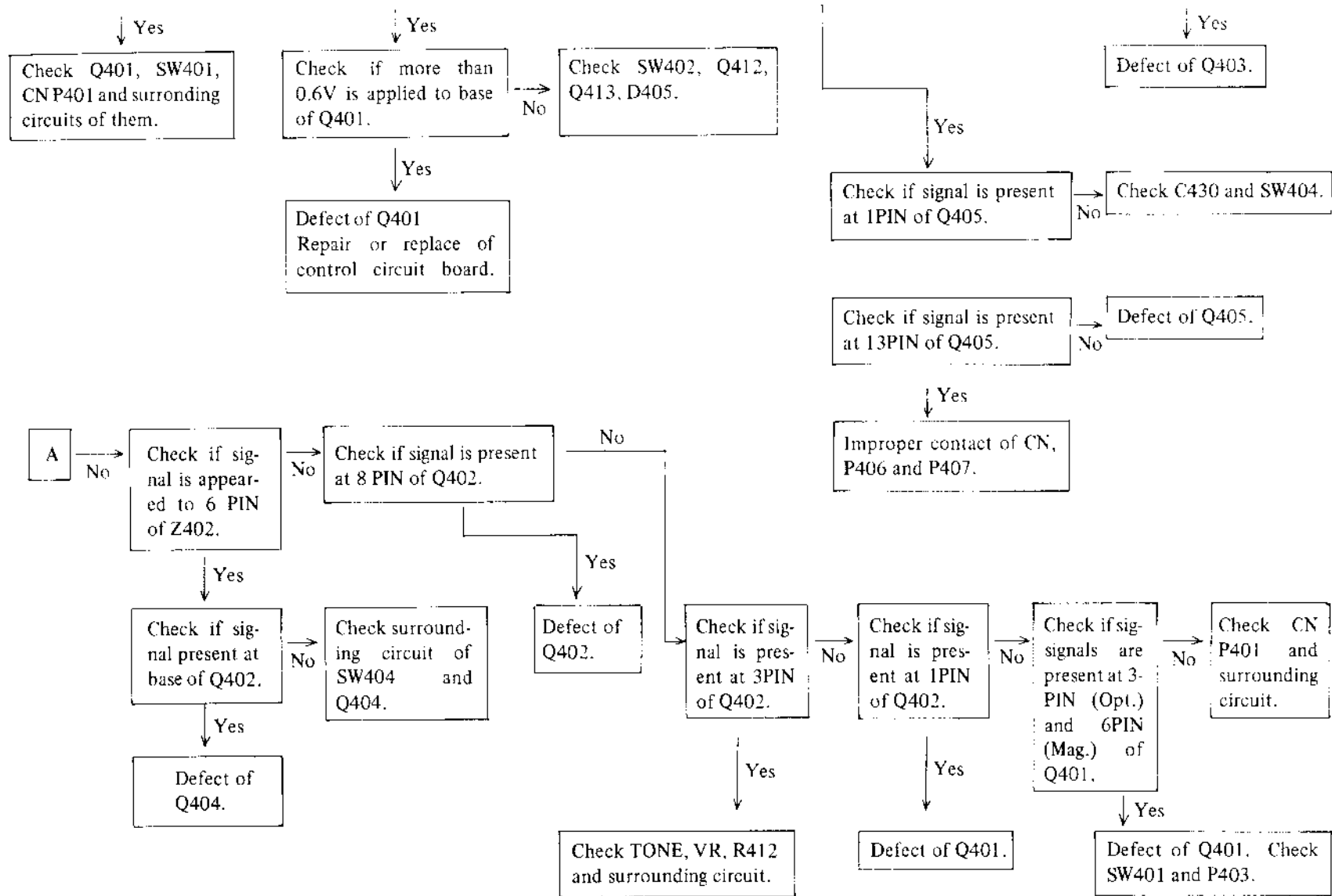
Refer to the service manual for CX-350 Xenon (p. 81 ~ p. 103).

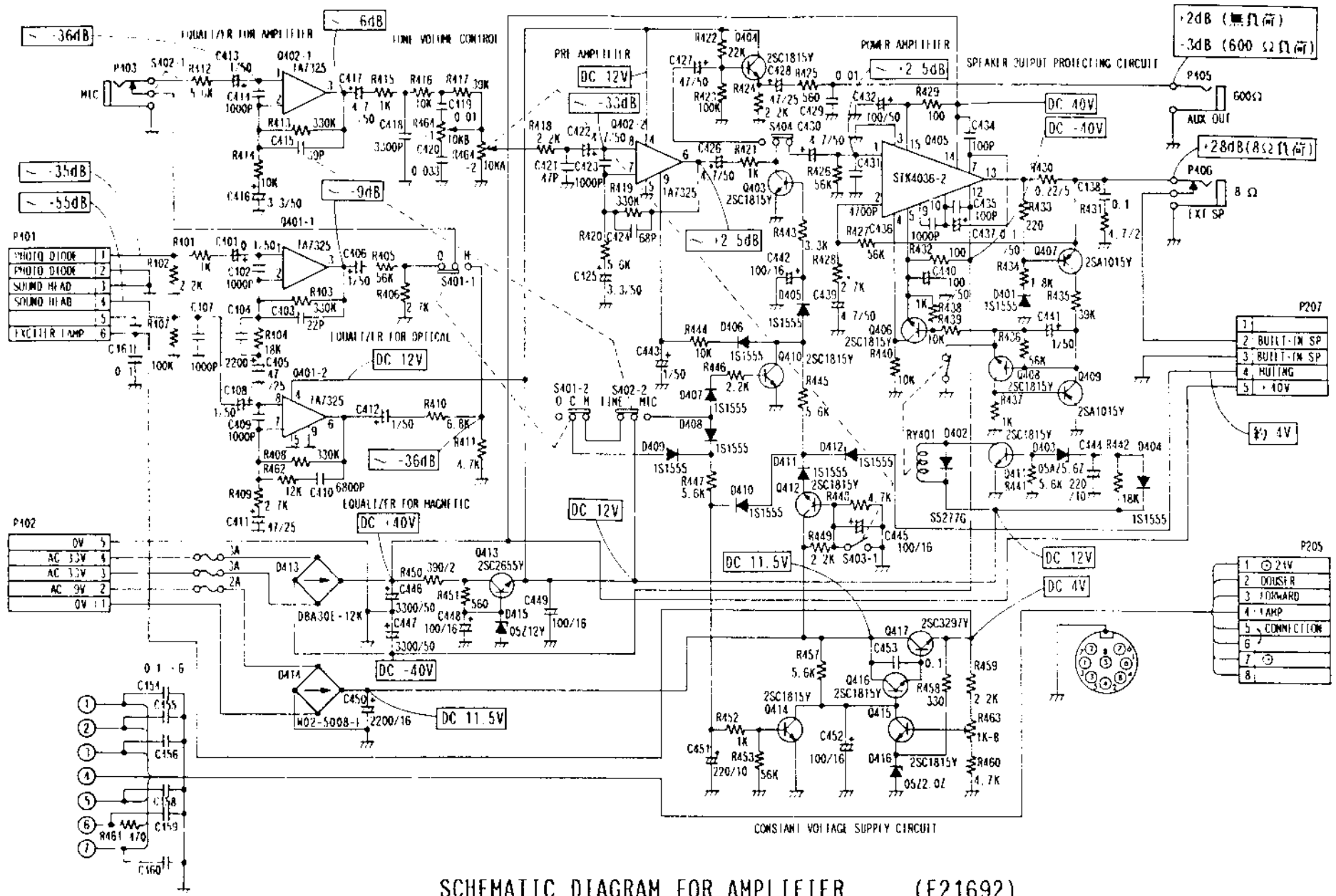
III 1 Amplifier Circuit (Trouble-shooting Hints)

Failure in replay (optical/magnetic)

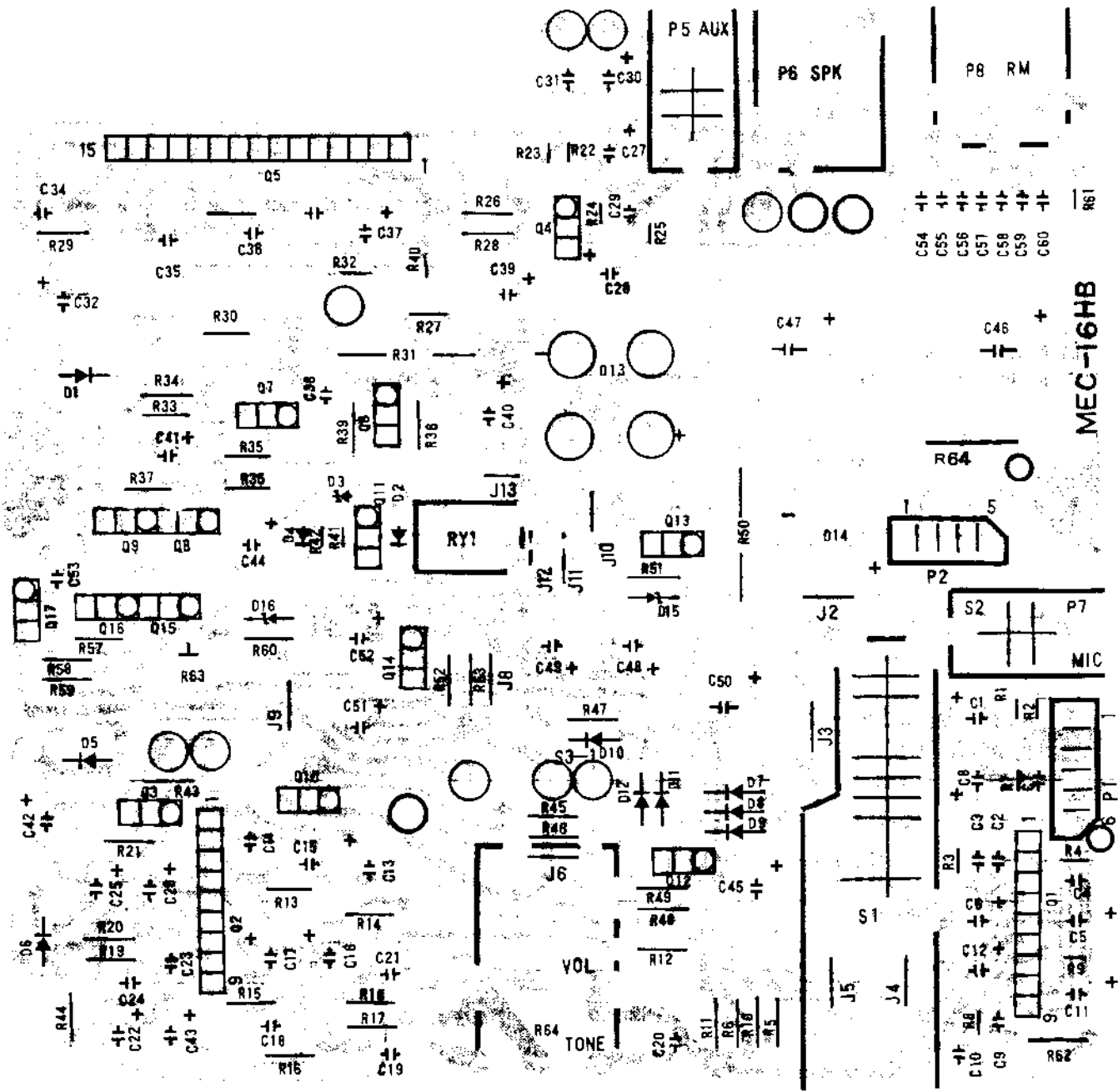
Check fuse for blow out and speaker for disconnection.



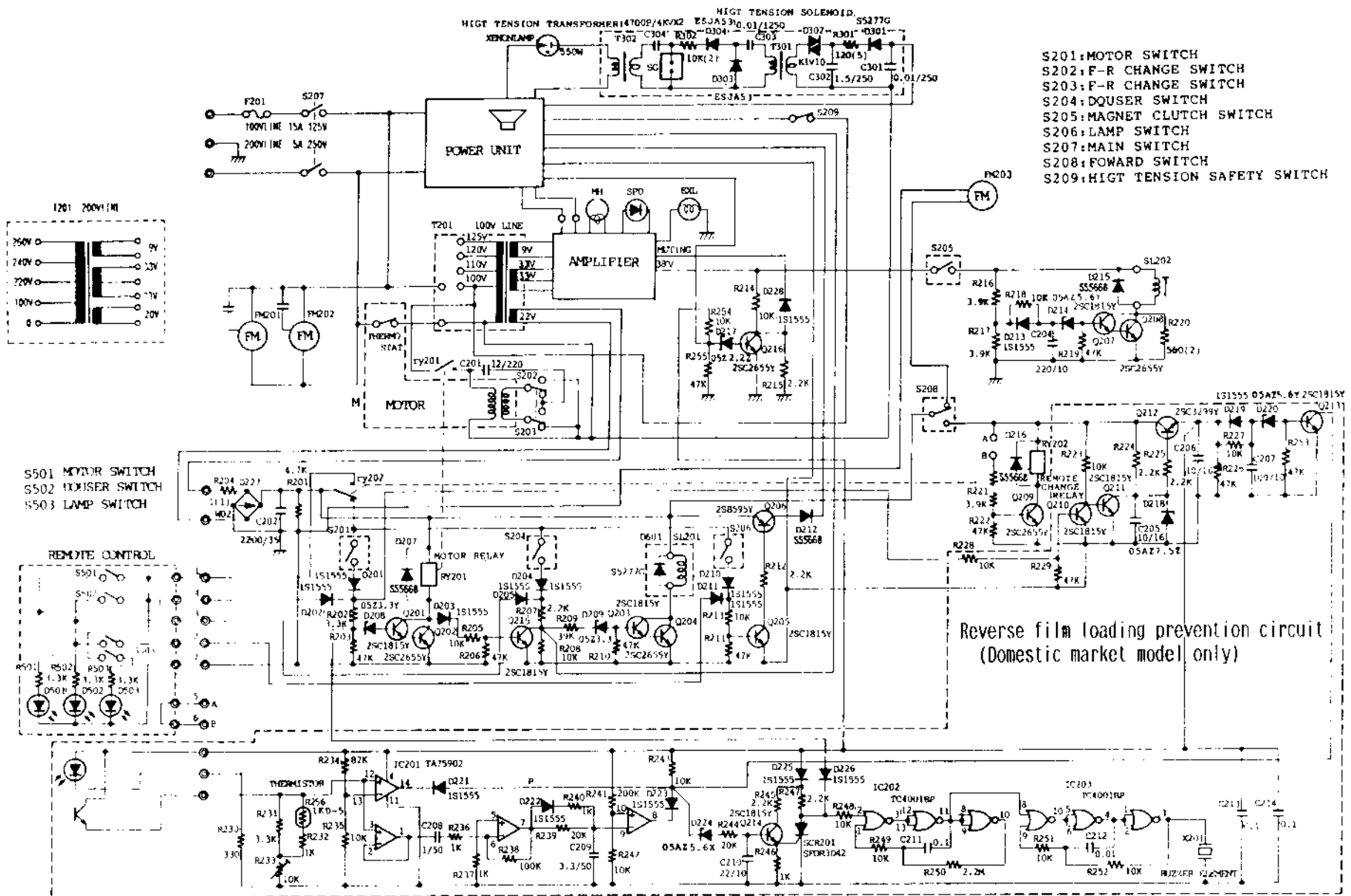




SCHEMATIC DIAGRAM FOR AMPLIFIER (E21692)



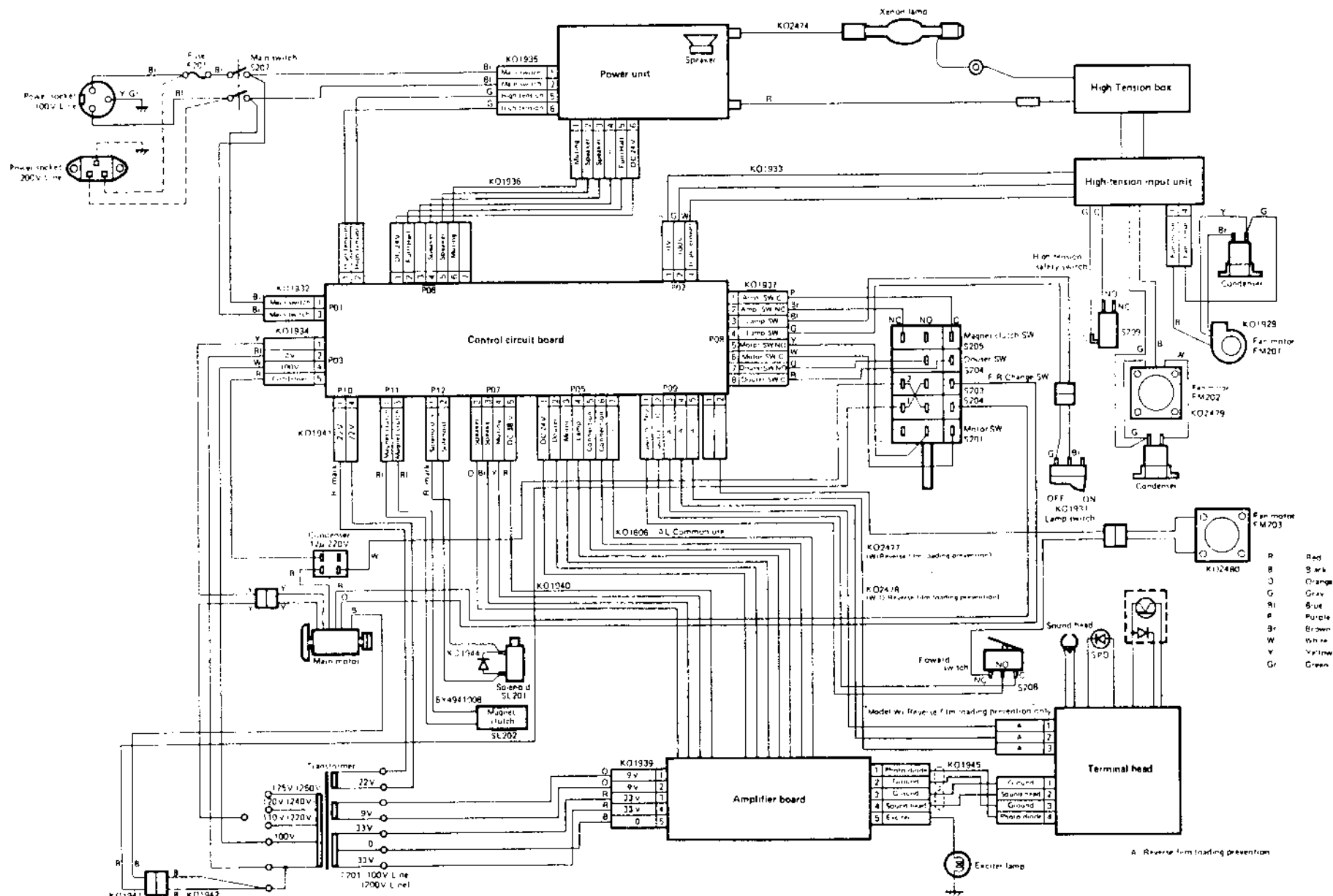
MEC-16HB



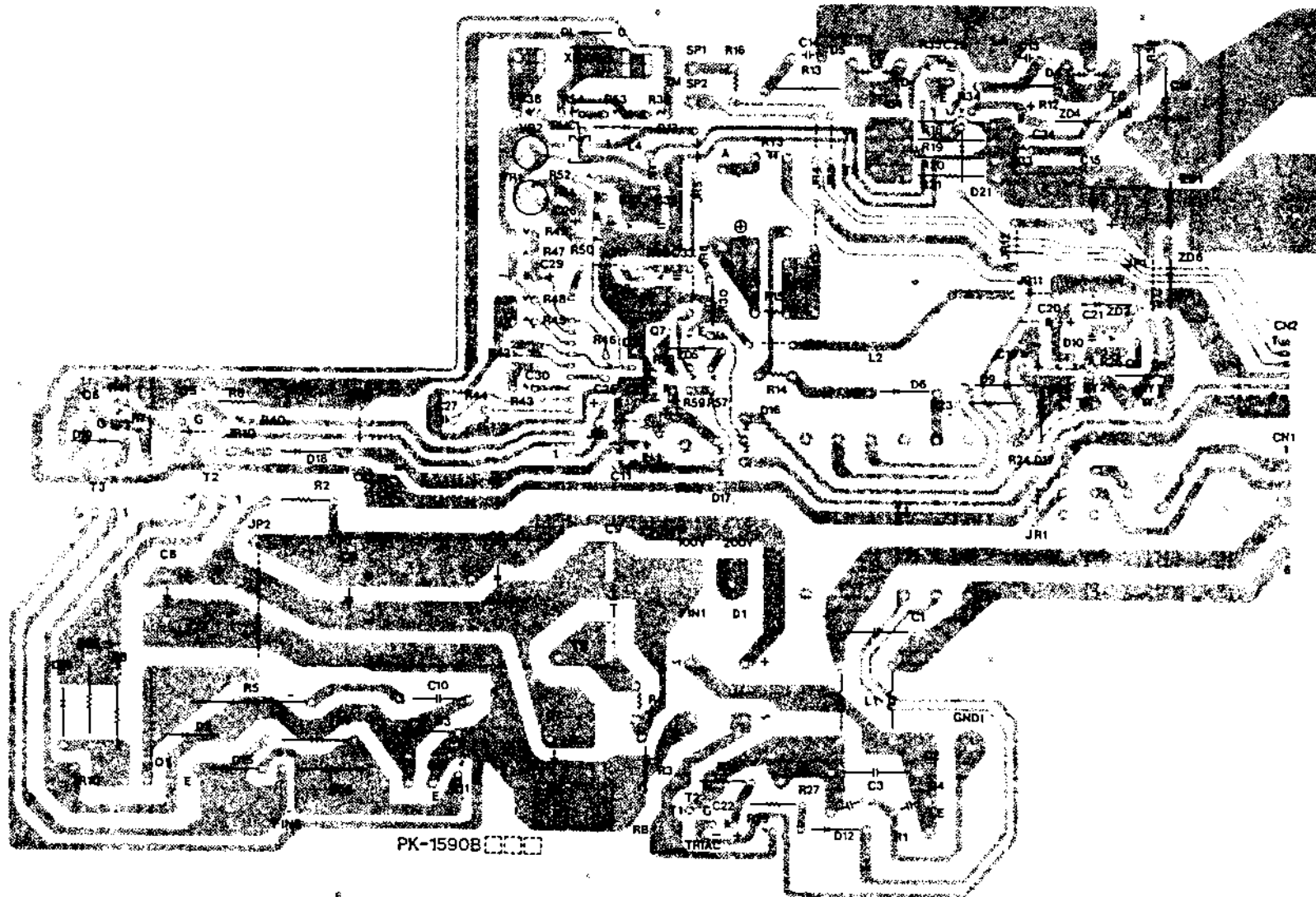
- S201: MOTOR SWITCH
- S202: F-R CHANGE SWITCH
- S203: F-R CHANGE SWITCH
- S204: DQUER SWITCH
- S205: MAGNET CLUTCH SWITCH
- S206: LAMP SWITCH
- S207: MAIN SWITCH
- S208: FOWARD SWITCH
- S209: HIGT TENSION SAFETY SWITCH

Reverse film loading prevention circuit
(Domestic market model only)

SCHEMATIC DIAGRAM FOR MACHINE E21694



CONNECTION DIAGRAM FOR MACHINE (E20693)



ELMO ELMO CO., LTD.

6-14, Meizen-cho, Mizuho-ku, Nagoya, 467 Japan
Tel. (052)811-5131

OVERSEAS SUBSIDIARY COMPANIES

U.S.A. Elmo Mfg. Corp.

70 New Hyde Park Road, New Hyde Park, NY 11040-9980
Tel. (516) 775-3200

21720 Nordhoff Street, Chatsworth, CA 91311-5826
Tel. (818) 346-4500

Canada

Elmo Canada Mfg. Corp.
44 West Drive, Brampton, Ontario L6T 3T6
Tel. (905) 453-7880

Germany

Elmo (Europe) G.m.b.H.
Karl-Rudolf-Str. 178, 40215 Düsseldorf
Tel. (0211) 376051