

FILM-TECH

THE INFORMATION CONTAINED IN THIS ADOBE ACROBAT PDF FILE IS PROVIDED AT YOUR OWN RISK AND GOOD JUDGMENT.

THESE MANUALS ARE DESIGNED TO FACILITATE THE EXCHANGE OF INFORMATION RELATED TO CINEMA PROJECTION AND FILM HANDLING, WITH NO WARRANTIES NOR OBLIGATIONS FROM THE AUTHORS, FOR QUALIFIED FIELD SERVICE ENGINEERS.

IF YOU ARE NOT A QUALIFIED TECHNICIAN, PLEASE MAKE NO ADJUSTMENTS TO ANYTHING YOU MAY READ ABOUT IN THESE ADOBE MANUAL DOWNLOADS.

WWW.FILM-TECH.COM

16 X 24 ISO Portframe Installation Instructions

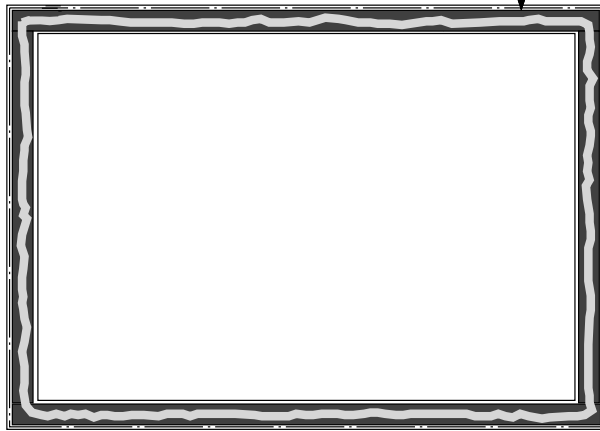
Please review instructions before installing this product

Step 1: Make sure all mounting surfaces are clean and free of Dust.

Step 2: Apply a bead of sealant to the mounting flange gasket on the Auditorium Frame Half. **THIS ADDS ADDITIONAL INTEGRITY TO THE SEAL (SEE DETAIL #1)**

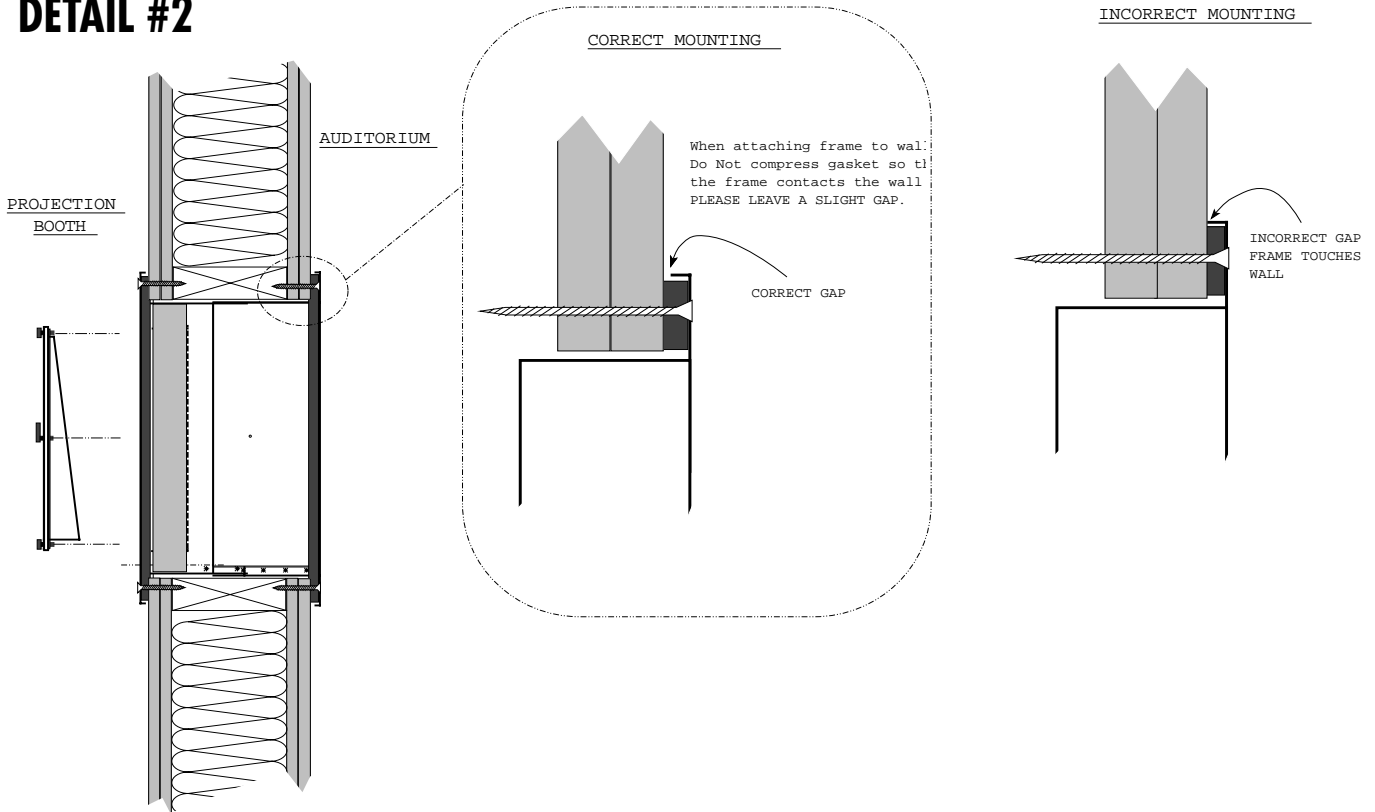
DETAIL #1

APPLY A BEAD OF SILICONE SEALANT TO THE FACE OF FRAME SEALING GASKET



Step 3: Mount the Auditorium Frame Half. (SEE DETAIL #2)

DETAIL #2



Step 4: Apply a bead of Silicone Based Caulks to the mounting flange gasket on the Projection Room Frame Half. THIS ADDS ADDITIONAL INTEGRITY TO THE SEAL

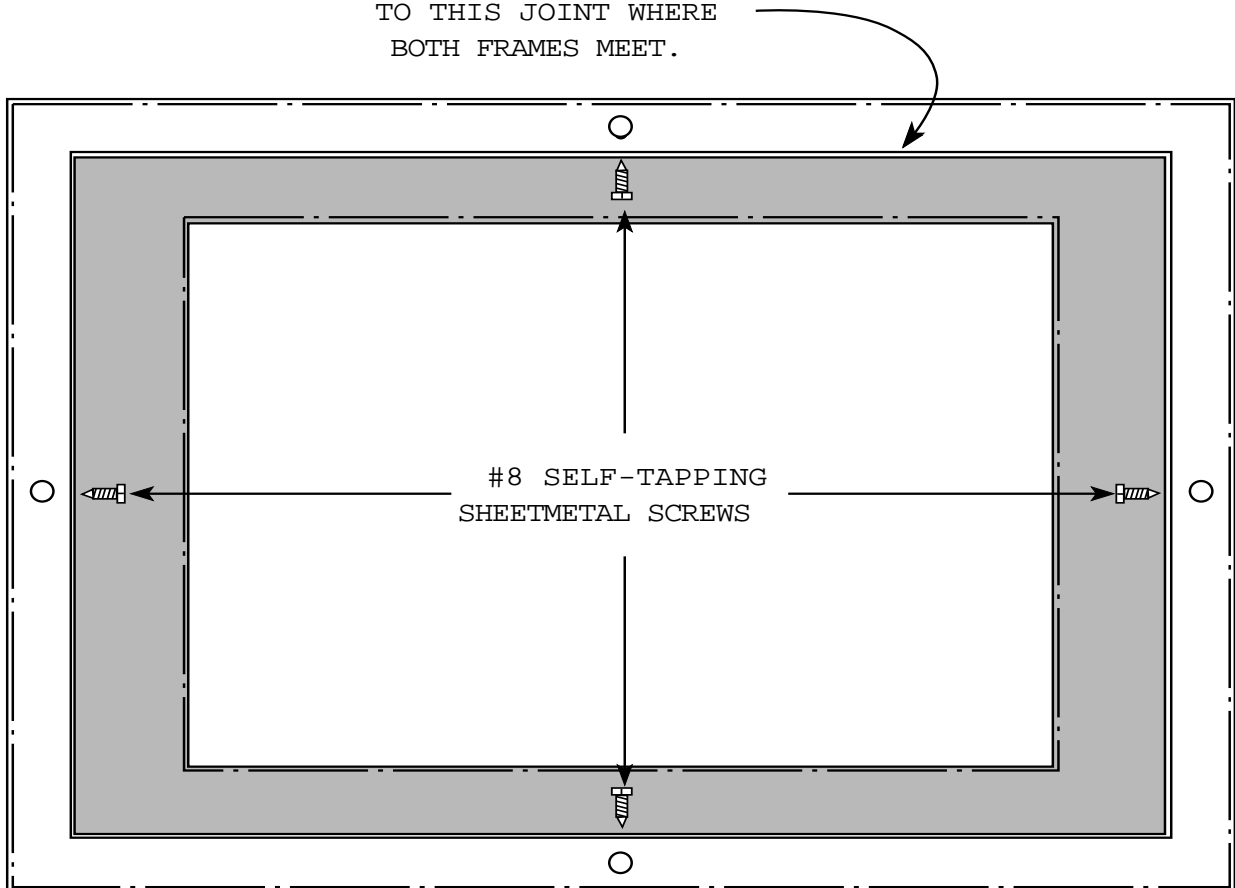
Step 5: Mount the Projection Room Frame Half. (SEE DETAIL #2)

Step 6: After both frames have been secured to the wall, take (4) #8 Self-tapping screws and use them to fasten the Two frames halves together. (SEE DETAIL #3)

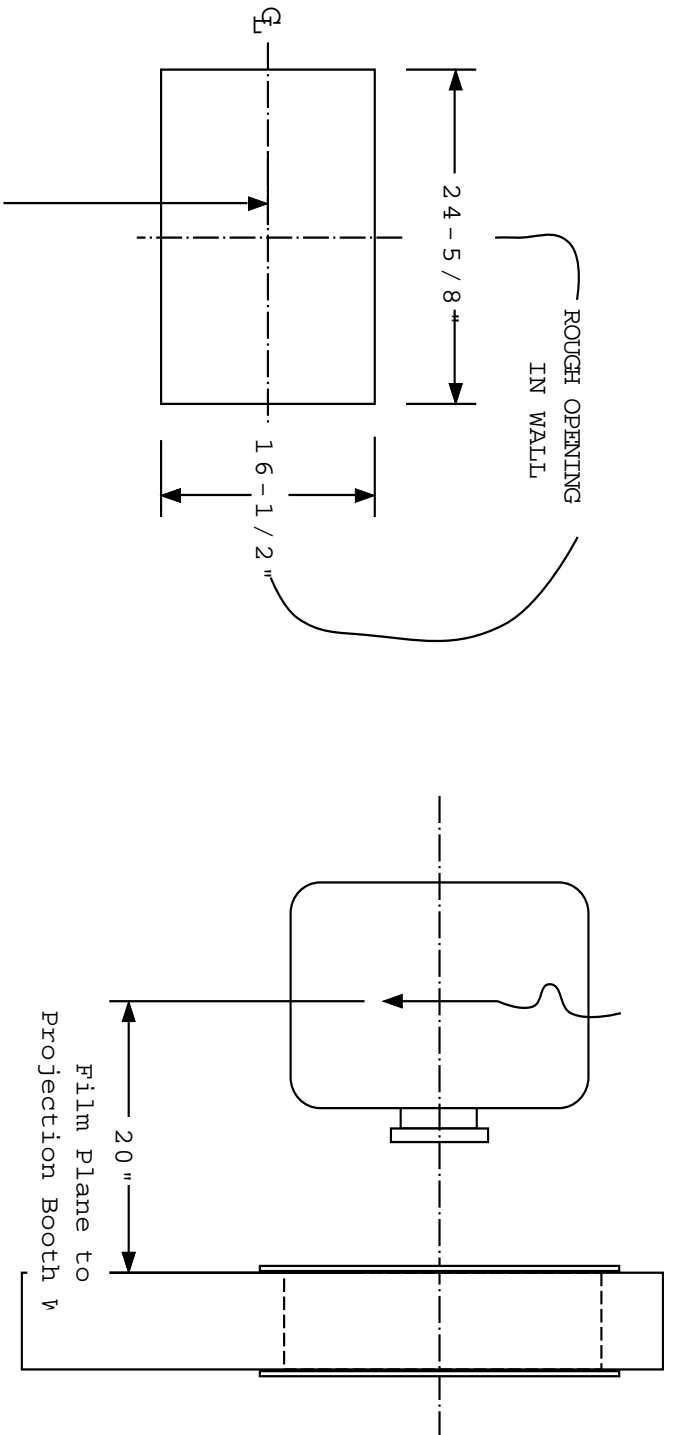
Step 7: After both frames have been secured to per step 5. Seal the Mating Joint of the Two Frame Halves with a Silicone Based Caulk. THIS ADDS ADDITIONAL INTEGRITY TO THE SEAL. (SEE DETAIL #3)

DETAIL #3

APPLY SILICONE SEALANT
TO THIS JOINT WHERE
BOTH FRAMES MEET.



AS VIEWED FROM AUDITORIUM



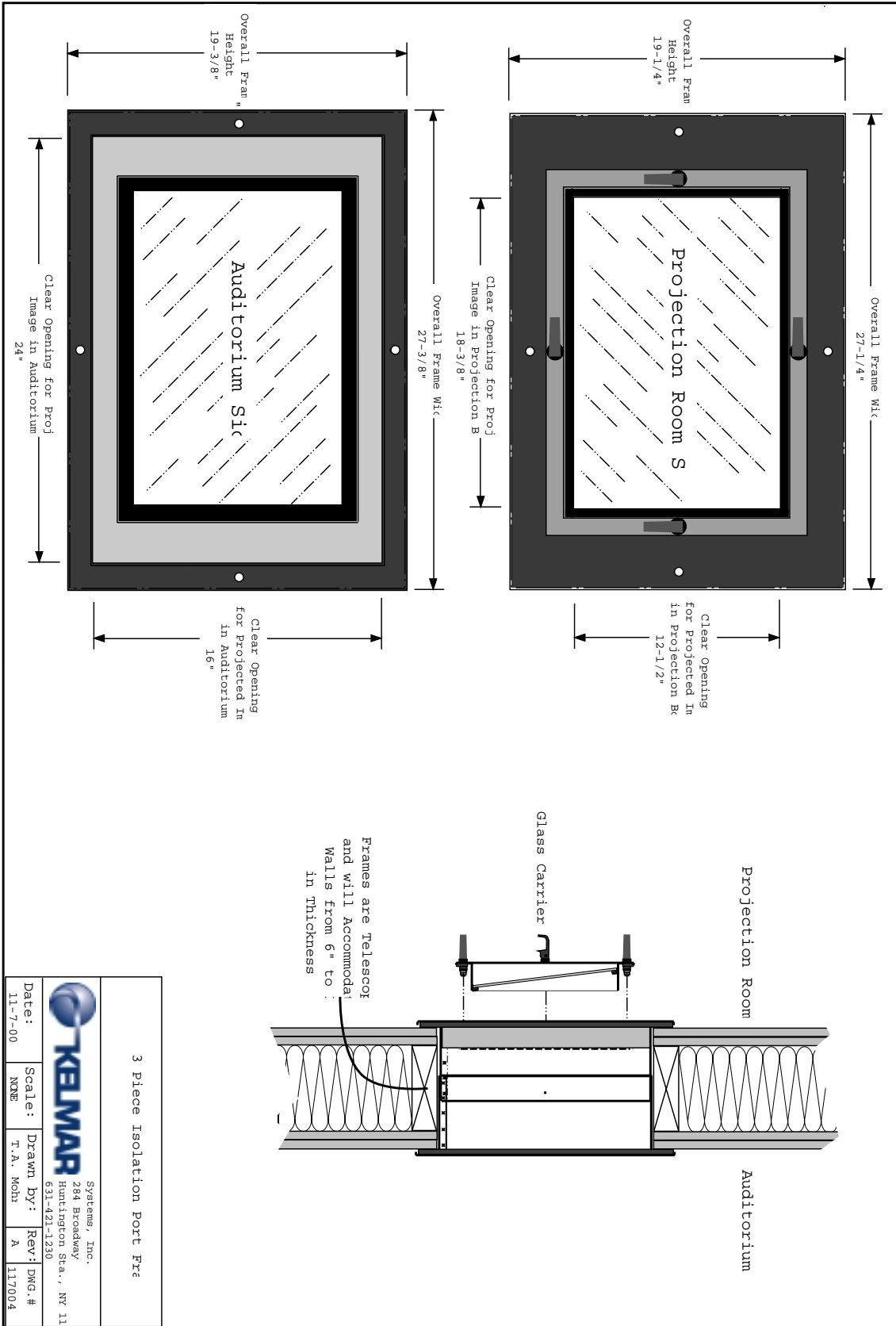
See Note "A"

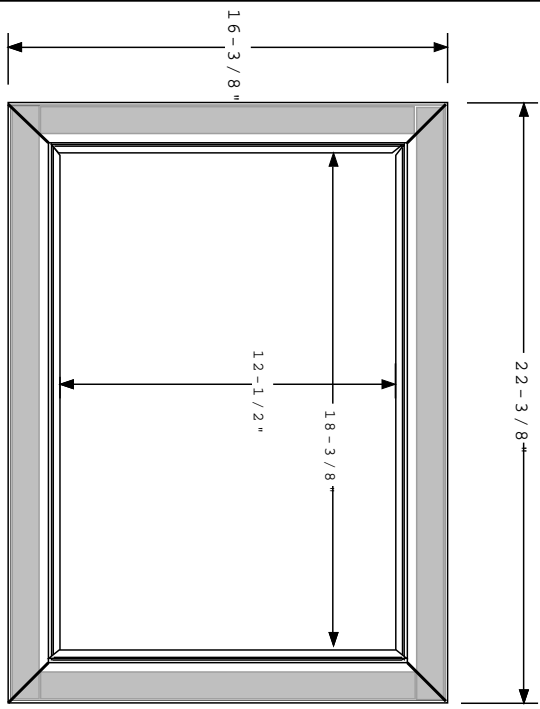
Notes:

A: 48" for "0" Degree Projection Angle, Reduce by 1/2" degree of pitch. ie: 3 degrees of downward pitch sha a Projection Port Centerline height of 46-1/2" A.F.I

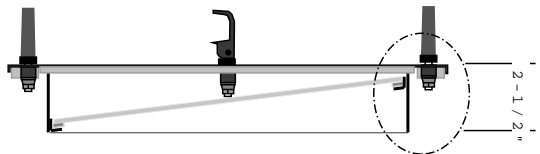
FINISHED BOOTH FLOOR

Porthole Frame Roughing Detail

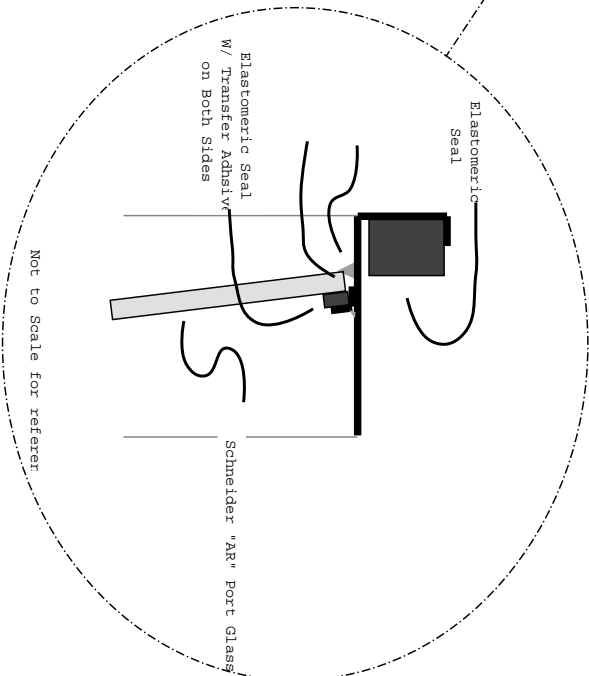




Glass Carrier
FRONT VIEW

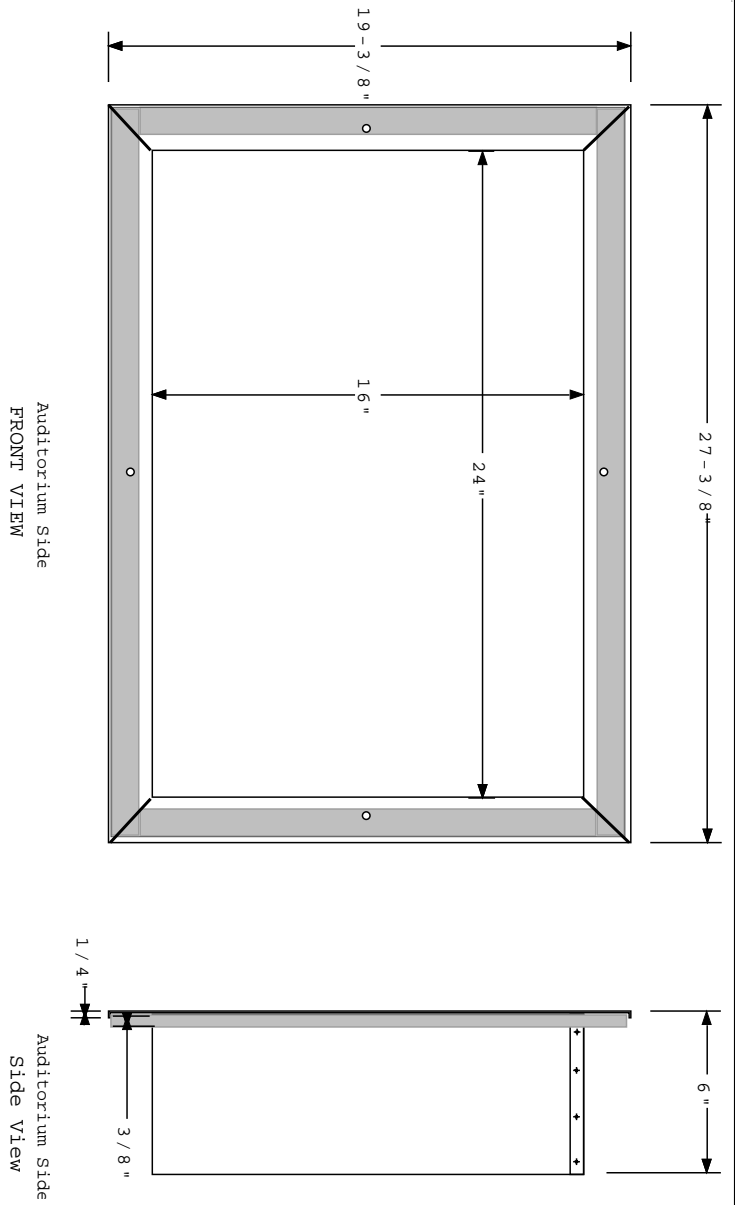



Glass Carrier
Side View




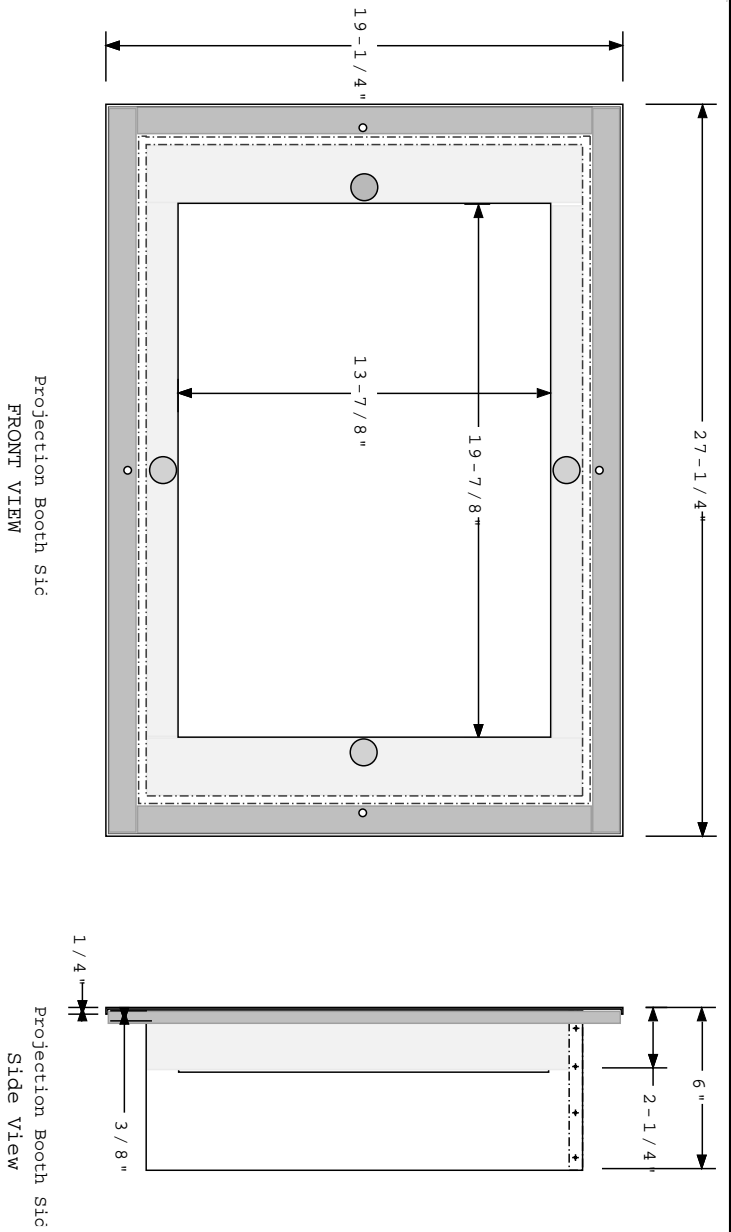
Legend:
 = Poron Elastomeric Seal

Auditorium Portion of 3 Piece Isolation Port Frame			
Systems, Inc. 284 Broadway Huntington Sta., NY 11			
Date:	Scale:	Drawn By:	Rev:
11-7-00	3"=1'	T. A. Mohr	A
			117003



Legend:
 = Poron Elastomeric Se

 Auditorium Portion of 3 Piece Isolation Port Frm			
Systems, Inc. 284 Broadway Huntington Sta., NY 11			
Date:	Scale:	Drawn By:	Rev:
11-7-00	3"=1'	T. A. Mohr	A
			DWG.#
			117002



- Legend:
- = Poron Elastomeric Seal
 - = Acoustic Foam for Sound Dampen

Projection Booth Portion 3 Piece Isolation Port Frc			
Systems, Inc. 284 Broadway Huntington Sea., NY 11			
Date:	Scale:	Drawn By:	Rev: DWG.#
11-7-00	3"-1'	T.A. Mohn	A 117001