

FILM-TECH

THE INFORMATION CONTAINED IN THIS ADOBE ACROBAT PDF FILE IS PROVIDED AT YOUR OWN RISK AND GOOD JUDGMENT.

THESE MANUALS ARE DESIGNED TO FACILITATE THE EXCHANGE OF INFORMATION RELATED TO CINEMA PROJECTION AND FILM HANDLING, WITH NO WARRANTIES NOR OBLIGATIONS FROM THE AUTHORS, FOR QUALIFIED FIELD SERVICE ENGINEERS.

IF YOU ARE NOT A QUALIFIED TECHNICIAN, PLEASE MAKE NO ADJUSTMENTS TO ANYTHING YOU MAY READ ABOUT IN THESE ADOBE MANUAL DOWNLOADS.

WWW.FILM-TECH.COM

Parts Book and Price List

for

Super Simplex

REG'D

TRADE MARK

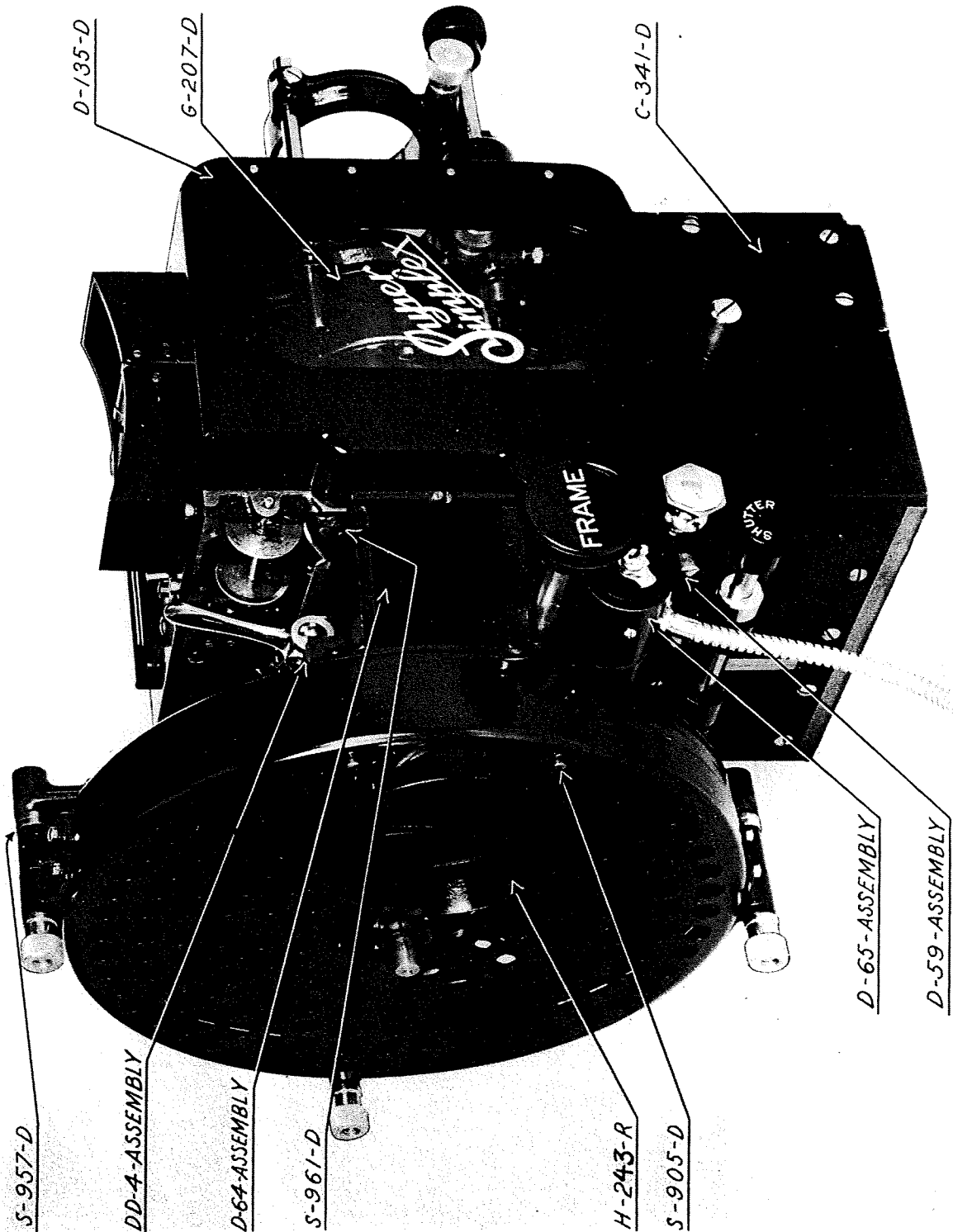
INTERNATIONAL PROJECTOR CORPORATION
90-96 GOLD STREET - - NEW YORK, N. Y.

COVERS AND OUTSIDE MECHANISM PARTS ARE
AVAILABLE IN GLOSSY AND WRINKLE FINISH.
UNLESS OTHERWISE SPECIFIED THE GLOSSY
FINISH PARTS WILL BE FURNISHED ON ORDERS.

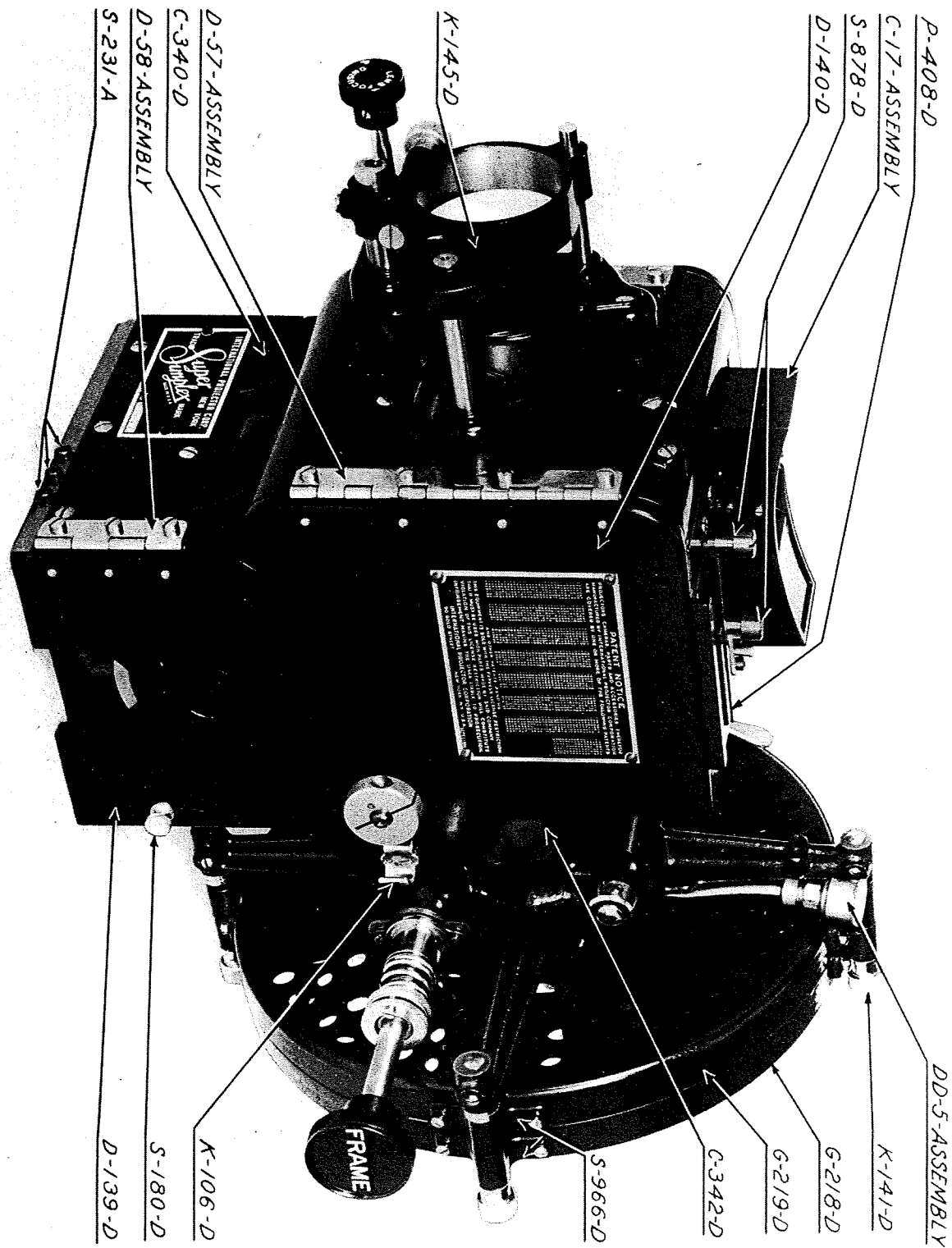
SUPER SIMPLEX

CONTENTS

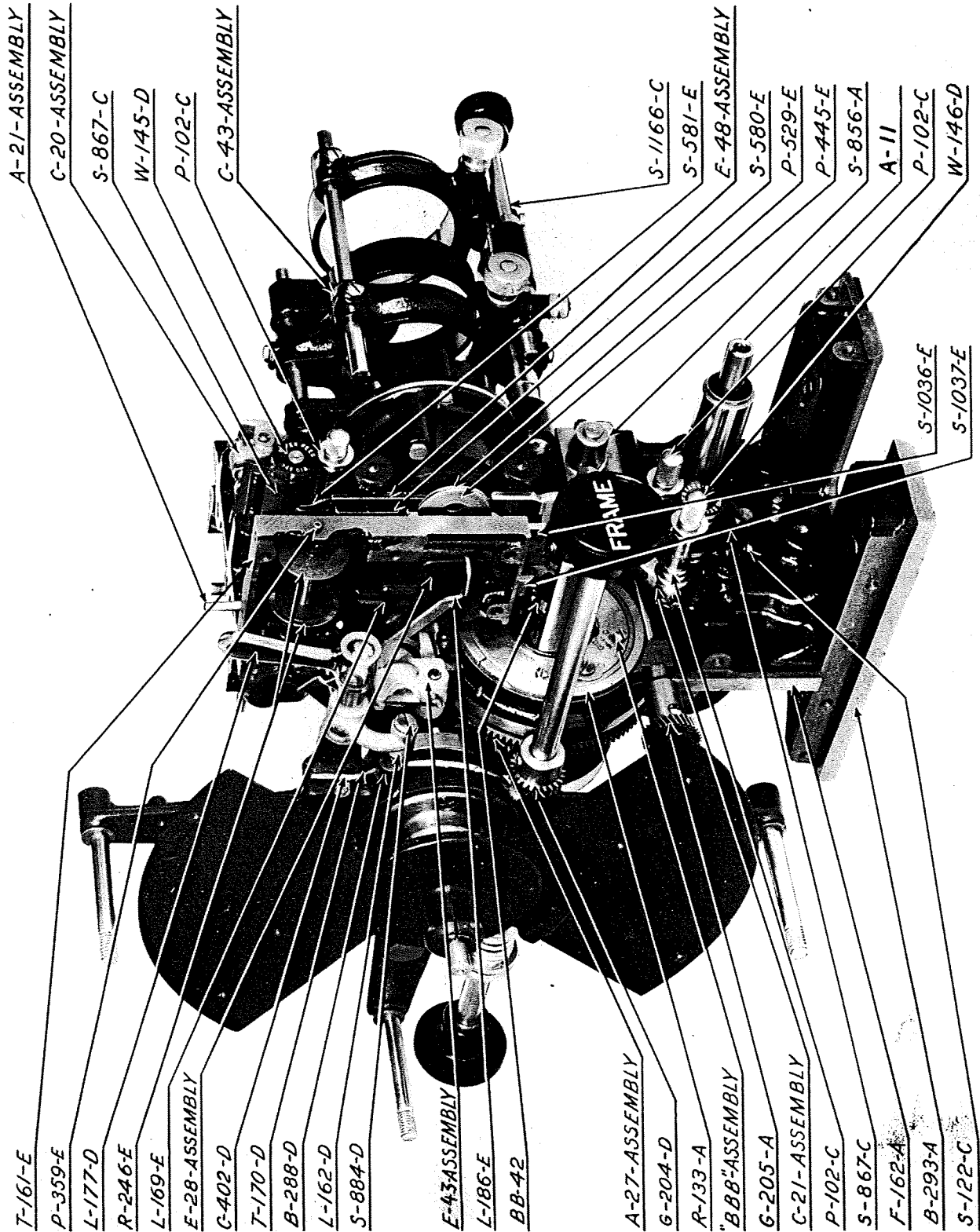
GROUP	PAGE
Doors and Covers	5
Mechanism Main Frame and Base	7
Film Traps	7
Lens Holder Complete	10
Intermittent Movement	11
Framing Cam and Pins	13
Upper and Lower Sprockets	13
Upper and Lower Pad Roller Arms	14
Back Shutter Bracket	15
Shutter Guard Bracket	17
Shutter Guards, Spotsight Box, Shutter	18
Pilot Light	20
Vertical Shaft, Governor, Shutter Gear Bracket, Framing Slide	20
Handle, Intermediate Shaft and Gear	23
Upper Magazine Roller Holder	24
18" Upper Magazine	25
18" Takeup Magazine	27
Accessories	29



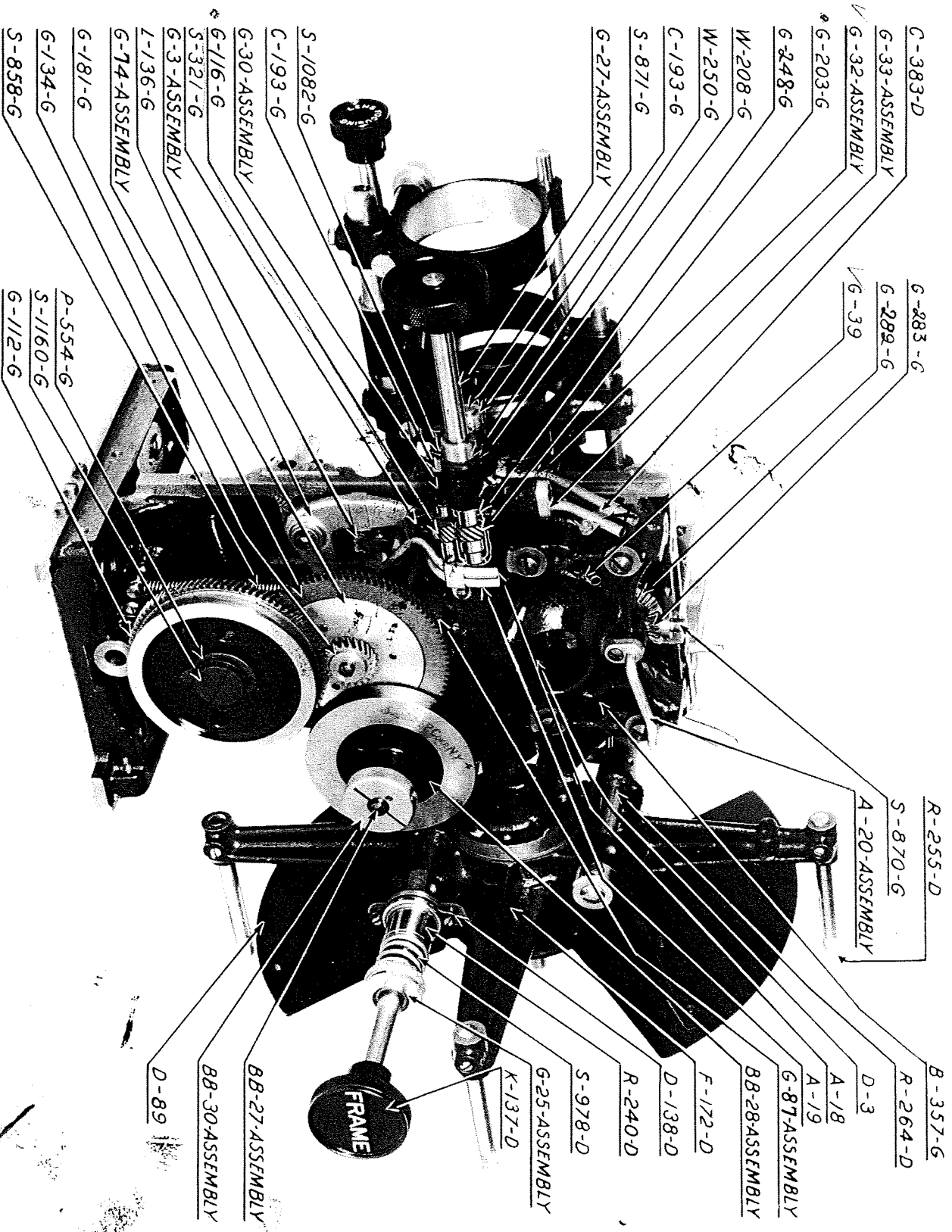
SUPER SIMPLEX PROJECTOR MECHANISM WITH DOORS AND COVERS (OPERATING SIDE)



SUPER SIMPLEX PROJECTOR MECHANISM WITH DOORS AND COVERS (NON-OPERATING SIDE)



SUPER SIMPLEX PROJECTOR MECHANISM LESS COVERS AND DOORS (OPERATING SIDE)



SUPER SIMPLEX PROJECTOR MECHANISM LESS COVERS AND DOORS (NON-OPERATING SIDE)

ORDER BY PART NUMBER

DESCRIPTION	PART NO.	UNIT LIST PRICE
DOORS AND COVERS		
OPERATING SIDE DOOR	D-71	\$ 13.50
Operating Side Door	D-135-D	7.45
Operating Side Door Glass	G-207-D	1.30
Operating Side Door Glass Clamp (4)	C-365-D	.10
Operating Side Door Glass Clamp Screw (4)	S-192-D	.10
Operating Side Door Lock Spring and Button Assembly	D-59	.90
Operating Side Door Lock Spring Fastening Screw (2)	S-904-D	.10
Operating Side Door Knob	K-132-D	.75
Operating Side Door Knob Fastening Screw (2)	S-248-A	.10
Operating Side Door Hinge Assembly	D-56	2.70
Operating Side Door Hinge Fastening Screw (4)	S-893-D	.10
OPERATING SIDE DOOR HINGE	D-56	2.70
Operating Side Door Hinge Plate (2)	P-411-D	*
Operating Side Door Hinge Pin (Large)	P-457-D	*
OPERATING SIDE DOOR LOCK SPRING AND BUTTON	D-59	.90
Operating Side Door Lock Spring	S-865-D	*
Operating Side Door Lock Button	B-301-D	*
Operating Side Cover	C-341-D	1.80
Operating Side Cover Fastening Screw (3)	S-872-D	.20
Front Cover	C-340-D	10.35
Front Cover Fastening Screw (Short) (3)	S-880-D	.10
Front Cover Fastening Screw (Medium)	S-872-D	.20
Front Cover Fastening Screw (Long) (3)	S-883-D	.35
Door Hinge Fastening Screw (11)	S-893-D	.10
Name Plate Fastening Screw (2)	S-102-E	.10
UPPER NON-OPERATING SIDE DOOR	D-72	9.90
Upper Non-operating Side Door	D-140-D	5.85
Upper Non-operating Side Door Lock Pin	P-144-D	.25
Upper Non-operating Side Door Lock Pin Spring	S-338-D	.10
Upper Non-operating Side Door Lock Plunger Pin	P-153-B	.10
Upper Non-operating Side Door Knob	K-106-D	.55
Upper Non-operating Side Door Knob Screw (2)	S-178-D	.10
Upper Non-operating Side Door Hinge Assembly	D-57	1.80
Upper Non-operating Side Door Hinge Fastening Screw (4)	S-893-D	.10
Patent Notice Name Plate Fastening Screw (4)	S-102-E	.10
UPPER NON-OPERATING SIDE DOOR HINGE	D-57	1.80
Upper Non-operating Side Door Hinge Plate	P-411-D	*
Front Cover Hinge Plate	P-412-D	*
Upper Non-operating Side Door Hinge Pin (Large)	P-457-D	*
Upper Non-operating Side Door Stop Link Screw	S-181-D	.10

* Not Sold Separately

ORDER BY PART NUMBER

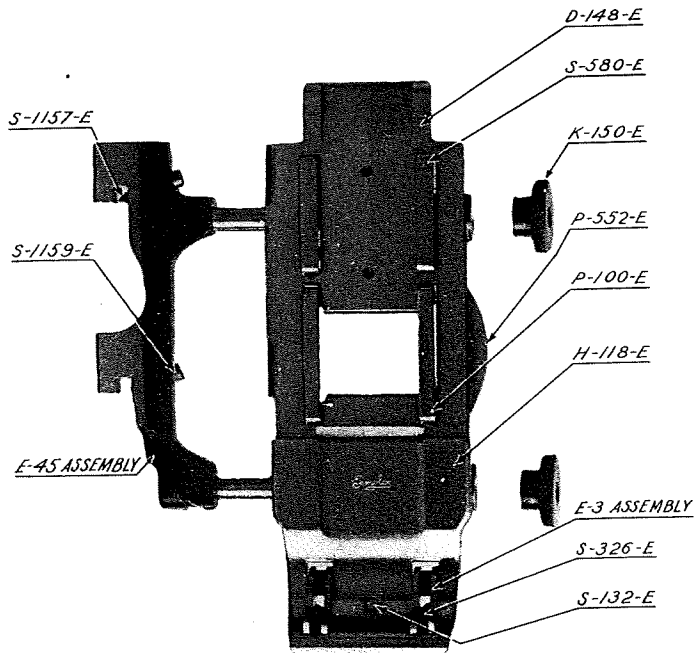
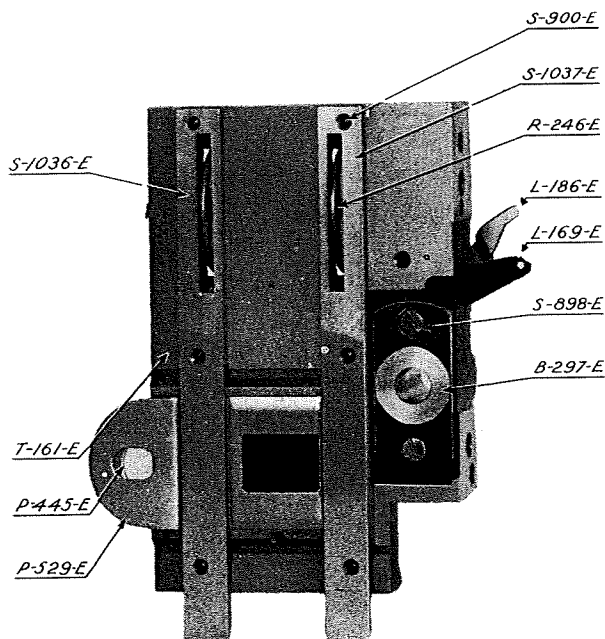
DESCRIPTION	PART NO.	UNIT LIST PRICE
DOORS AND COVERS Continued		
LOWER NON-OPERATING SIDE DOOR HINGE (OLD TYPE)	D-58	1.65
Lower Non-operating Side Door Hinge Plate (2)	P-413-D	*
Lower Non-operating Side Door Hinge Pin (Small)	P-458-D	*
Lower Non-operating Side Door Locking Screw	S-180-D	.35
Lower Non-operating Side Door (New Type) (Includes A-204-D Angle Plate and S-180-D Screw)	D-139-D	3.20
RIGHT REAR COVER (DRUM) (COMPLETE)	D-69	13.50
Right Rear Cover	C-339-D	5.20
Right Rear Cover Collar	C-346-D	1.35
Right Rear Cover Collar Screw	S-885-A	.10
Right Rear Cover Stripper Roller	R-162-D	.75
Right Rear Cover Stripper Roller Screw (2)	S-771-D	.10
Shutter Knob	K-139-D	.60
Shutter Knob Fastening Screw	S-885-A	.10
Shutter Adjusting Gear (Small)	G-206-D	2.70
Shutter Adjusting Gear Screw	S-885-A	.10
Shutter Adjusting Rod	R-245-D	1.30
Operating Side Door Lock Stop Screw	S-185-D	.10
Right Rear Cover Fastening Screw (Short) (2)	S-880-A	.10
Right Rear Cover Fastening Screw (Long)	S-872-D	.20
Left Rear Cover	C-342-D	4.15
Left Rear Cover Fastening Screw (Short) (2)	S-880-A	.10
Left Rear Cover Fastening Screw (Medium) (3)	S-872-D	.20
TOP PLATE ASSEMBLY	D-70	5.60
Top Plate	P-408-D	4.50
Upper Non-operating Side Door Stop Link	L-163-D	.15
Upper Non-operating Side Door Stop Link Screw	S-181-D	.10
Upper Sprocket Shaft Oil Tube Fastening Plate	P-437-D	.15
Upper Sprocket Shaft Oil Tube Fastening Plate Screw (2)	S-931-D	.10
Upper Sprocket Shaft Oil Tube Packing	P-438-D	.10
Stereo Slide Stop Screw	S-106-D	.10
Top Plate Fastening Screw (4)	S-872-D	.20
Upper Magazine Fastening Screw (2)	S-878-D	.45

* Not Sold Separately

ORDER BY PART NUMBER

DESCRIPTION	PART NO.	UNIT LIST PRICE
MECHANISM MAIN FRAME & BASE		
Mechanism Main Frame Fastening Screw (4)	S-115-A	.10
Mechanism Main Frame Oil Hole Plug Screw (2) (Fil. Hd.)	S-1042-A	.10
Mechanism Base	B-293-A	11.70
Mechanism Base Dowel Pin (2)	P-418-A	.10
Mechanism Base Oil Drain Screw (3)	S-231-A	.10
Mechanism Main Frame Oil Hole Plug Screw (Headless)	S-1146-A	.10
Pinion Stud Fastening Screw	S-118-L	.10
Stripper Stud Fastening Screw (ERPI)	S-122-C	.10

FILM TRAPS



SUPER SIMPLEX FILM TRAP (SLIP-IN APERTURE TYPE)

ORDER BY PART NUMBER

DESCRIPTION	PART NO.	UNIT LIST PRICE
FILM TRAPS - Continued		
SUPER SIMPLEX FILM TRAP COMPLETE (SLIP-IN APERTURE TYPE) (Includes E-2, E-43, E-30, E-15, E-28, E-51, E-48)	E-36	\$ 80.00
Film Trap (Slip-in Aperture Type)	T-161-E	22.50
Film Trap Left Shoe (Slip-in Aperture Type)	S-1037-E	3.00
Film Trap Right Shoe (Slip-in Aperture Type)	S-1036-E	3.00
Film Trap Shoe Retaining Screws (6)	S-900-E	.10
Film Trap Bushing	B-297-E	3.40
Film Trap Bushing Fastening Screws (2)	S-898-E	.10
Aperture Plate (Slip-in Type), Square Corners	P-672-E	.65
Aperture Plate Sliding Shim	P-445-E	.25
Film Trap Door Holder Thimble	T-101-E	.25
Film Trap Door Holder Spring	S-327-E	.10
FILM TRAP DOOR HOLDER	E-2	5.70
Film Trap Door Holder	H-119-E	*
Film Trap Door Holder Pin (2)	P-119-E	.10
Film Trap Door Holder Stud	S-367-E	.70
Film Trap Door Holder Stud Retaining Pin	P-545-E	.10
Film Trap Door Holder Stud Distance Washer	W-148-E	.55
FILM TRAP DOOR LOCK	E-43	4.05
Film Trap Door Lock Pawl Pivot	P-380-E	.25
Film Trap Door Lock Pawl Pivot Lock Screw	S-898-E	.10
Film Trap Door Lock Plunger	P-544-E	.35
Film Trap Door Lock Plunger Spring	S-1144-E	.10
Film Trap Door Lock Trigger	T-137-E	1.25
Film Trap Door Lock Trigger Support	S-1143-E	1.25
Film Trap Door Lock Fastening Screw	S-1145-E	.15
Lock Pawl Pivot Clamp	C-467-E	.10
LATERAL GUIDE ROLLER AND SHAFT ASSEMBLY	E-30	3.50
Lateral Guide Roller (2)	R-246-E	1.25
Lateral Guide Roller Shaft and Washer Assembly	E-15	.30
Lateral Guide Roller Shaft Collar	C-129-E	.25
Lateral Guide Roller Shaft Collar Screw	S-763-E	.10
Lateral Guide Roller Spring	S-762-E	.10
LATERAL GUIDE ROLLER SHAFT AND WASHER	E-15	.30
Lateral Guide Roller Shaft	S-764-E	*
Lateral Guide Roller Spring Retain Washer	W-198-E	*
Lateral Guide Roller Pivot (2)	P-359-E	.10
Lateral Guide Roller Pivot Fastening Screw (2)	S-192-D	.10

* Not Sold Separately

ORDER BY PART NUMBER

DESCRIPTION	PART NO.	UNIT LIST PRICE
FILM TRAPS - Continued		
AUTOMATIC FIRE SHUTTER	E-28	1.15
Automatic Fire Shutter Lift Link	L-165-E	*
Automatic Fire Shutter Lift Link Rivet	R-254-E	*
Automatic Fire Shutter Back Plate	P-460-E	*
Automatic Fire Shutter Side Plate (2)	P-461-E	*
Automatic Fire Shutter Front Plate	P-441-E	*
Automatic Fire Shutter Lift Link Screw	S-935-E	.10
Automatic Fire Shutter Lift Lever	L-169-E	.25
Automatic Fire Shutter Upper Stop Screw	S-959-E	.15
Automatic Fire Shutter Lower Stop Screw	S-960-E	.15
Automatic Fire Shutter Lifting Stud	S-514-C	.15
AUTOMATIC FIRE SHUTTER LIFT LEVER & BUSHING	E-51	1.50
Automatic Fire Shutter Lift Lever (For Pilot Light)	L-186-E	*
Automatic Fire Shutter Lift Lever Bushing (For Pilot Light)	B-381-E	*
Automatic Fire Shutter Lift Lever Pivot Screw	S-1172-E	.45
FILM TRAP REMOVABLE DOOR AND BRACKET	E-48	21.00
Removable Door	D-148-E	5.50
Removable Door Protector	P-553-E	1.45
Removable Door Protector Fastening Screw (3)	RP-24	.10
Removable Door Pad	P-100-E	.90
Removable Door Pad Spring	S-328-E	.10
Removable Door Pad Spring Fastening Screw (2)	S-130-E	.10
Removable Door Double Tension Shoe (2)	S-580-E	.20
Removable Door Double Tension Shoe Spring	S-581-E	.10
Removable Door Double Tension Shoe Spring Fastening Screw (2)	S-130-E	.10
Removable Door Film Guide Holder	H-118-E	.90
Removable Door Film Guide Holder Fastening Screw (4)	S-130-E	.10
Removable Door Clamping Knob (2)	K-150-E	.35
Removable Door Locating Bracket and Stud Assembly	E-45	6.35
Intermittent Film Guide Assembly	E-3	1.80
Intermittent Film Guide Retaining Spring	S-326-E	.10
Intermittent Film Guide Retaining Spring Screw	S-132-E	.10
REMOVABLE DOOR LOCATING BRACKET AND STUD	E-45	6.35
Removable Door Locating Bracket	B-368-E	*
Removable Door Support Stud (2)	S-1158-E	*
Removable Door Support Stud Fastening Pin (2)	CA-180	*
Removable Door Support Bracket Screw (Long)	S-1157-E	.10
Removable Door Support Bracket Screw (Short)	S-1159-E	.10

* Not Sold Separately

ORDER BY PART NUMBER

DESCRIPTION	PART NO.	UNIT LIST PRICE
FILM TRAPS - Continued		
DOUBLE TENSION GATE (SUBSTITUTE FOR E-48)	E-38	19.60
Film Trap Door	D-145-E	9.75
Film Trap Door Protector	P-436-E	.85
Film Trap Door Protector Fastening Screw (2)	S-192-D	.10
Film Trap Door Film Guide Holder	H-118-E	.90
Film Trap Door Film Guide Holder Fastening Screw (4)	S-130-E	.10
Film Trap Door Pad	P-100-E	.90
Film Trap Door Pad Spring	S-328-E	.10
Film Trap Door Pad Spring Fastening Screw (2)	S-130-E	.10
Film Trap Door Double Tension Shoe (2)	S-580-E	.20
Film Trap Door Double Tension Shoe Spring	S-581-E	.10
Film Trap Door Double Tension Shoe Spring Fastening Screw (2)	S-130-E	.10
Intermittent Film Guide Assembly	E-3	1.80
Intermittent Film Guide Retaining Spring	S-326-E	.10
Intermittent Film Guide Retaining Spring Screw	S-132-E	.10
INTERMITTENT FILM GUIDE	E-3	1.80
Intermittent Film Guide Distance Collar (4)	C-127-E	.10
Intermittent Film Guide (Inside) (2)	G-125-E	.20
Intermittent Film Guide (Outside) (2)	G-126-E	.40
Intermittent Film Guide Stud (2)	S-665-E	.15
Intermittent Film Guide Stud Screw (4)	S-716-E	.10
FILM TRAP DOOR TRIP LEVER	C-25	3.15
Film Trap Door Trip Lever	L-161-C	2.70
Film Trap Door Trip Lever Spring	S-866-C	.10
Film Trap Door Trip Lever Spring Fastening Screw (2)	S-873-C	.10
Film Trap Door Trip Lever Screw	S-874-C	.30
Film Trap Fastening Screw (2)	S-877-C	.10
Film Trap Dowel Pin (2)	P-169-G	.10
SUPER SIMPLEX FILM TRAP COMPLETE (FIXED APERTURE TYPE)	E-54	80.00
(Includes E-2, E-43, E-30, E-15, E-28, E-51, E-48)		
Film Trap (Fixed Aperture Type)	T-161-E	22.50
Aperture Plate (Square Corners)	P-671-E	.60
Aperture Plate Fastening Screw (2)	S-434-E	.10
Aperture Spacer Plate	S-1361-E	.50
(Balance same as E-36)		
LENS HOLDER COMPLETE		
LENS SLIDE ASSEMBLY	C-26	6.75
Lens Slide Flange	F-156-C	1.90
Lens Slide Guide Pin (3)	P-405-C	.45
Lens Slide Plate	P-415-C	.70
Lens Slide Spring (3)	S-854-C	.10
Lens Slide Guide Pin Screw (3)	S-958-C	.10
Lens Slide	S-1013-C	1.15
Lens Slide Flange Fastening Screw (3)	S-897-C	.10

ORDER BY PART NUMBER

DESCRIPTION	PART NO.	UNIT LIST PRICE
LENS HOLDER COMPLETE - Continued		
LENS CARRIER ASSEMBLY	C-43	36.25
Lens Carrier Support	S-1169-C	11.95
Lens Carrier Pivot	P-404-C	1.00
Lens Carrier Support Dowel Pin (2)	P-418-A	.10
Lens Carrier Tie Rod	R-247-C	.55
Lens Carrier Upper Guide Rod	R-279-C	.45
Lens Carrier Set Screw (5)	S-860-C	.25
Lens Carrier Support Support Friction Stud	S-861-C	.30
Lens Carrier Adjusting Knob	K-136-C	.65
Lens Carrier Knob Fastening Screw	S-885-A	.10
Lens Carrier Stop Tube	T-176-C	.45
Lens Carrier Friction Stud Nut (2)	N-192-C	.45
Back Lens Carrier	C-415-C	7.65
Front Lens Carrier	C-416-C	6.75
Adjustable Flange Lock Nut (2)	N-194-C	.75
Screw (3)	IA-501	.10
Lens Slide Flange Spacer	S-1438-C	2.50
Lens Carrier Adjusting Screw	C-44	2.25
Lens Clamp Screw (2)	C-45	2.25
Lens Carrier Support Fastening Screw (4)	S-877-C	.10
LENS CARRIER ADJUSTING SCREW	C-44	2.25
Lens Carrier Adjusting Stop Collar	C-343-C	.75
Lens Carrier Adjusting Stop Collar Taper Pin	P-107-G	.10
Lens Carrier Adjusting Screw	S-1166-C	1.15
LENS CLAMP SCREW AND KNOB (2)	C-45	2.25
Lens Clamp Screw Knob (2)	K-140-C	1.00
Lens Clamp Screw Knob Taper Pin (2)	P-430-A	.10
Lens Clamp Screw (2)	S-1170-C	.90
INTERMITTENT MOVEMENT		
SUPER SIMPLEX INTERMITTENT COMPLETE	"BBB"	110.00
INTERMITTENT CASE OIL TUBE ASSEMBLY	A-16	.90
Oil Tube Fastening Flange	F-165-A	*
Oil Tube	T-158-A	*
Oil Tube Gasket	G-211-G	.10
Oil Tube Fastening Flange Screw	S-932-G	.10
FLYWHEEL SHAFT AND GEAR	BB-27	3.30
Flywheel Shaft Gear	G-187-BB	1.65
Flywheel Shaft	S-726-BB	1.65
FLYWHEEL AND GEAR	BB-28	5.80
Flywheel Gear	G-185-BB	2.55
Flywheel	W-191-BB	3.25
* Not Sold Separately.		

ORDER BY PART NUMBER

DESCRIPTION	PART NO.	UNIT LIST LIST
INTERMITTENT MOVEMENT - Continued		
FLYWHEEL LOCK COMPLETE	BB-30	3.70
Flywheel Lock Key	K-130-BB	.55
Flywheel Lock Nut	N-171-BB	*
Flywheel Lock Screw	S-725-BB	.10
OUTER BEARING OIL CUP		
Outer Bearing Oil Cup Ball	B-250-BB	*
Outer Bearing Oil Cup	C-296-BB	*
Outer Bearing Oil Cup Spring	S-734-BB	*
TAPER PIN EJECTOR		
Taper Pin Ejector Block	B-254-BB	2.05
Taper Pin Ejector Screw	S-757-BB	.15
INTERMITTENT CASE COVER AND ARM		
Outer Bearing Oil Cup	BB-31	.15
Case Cover and Bearing Arm	A-192-BB	*
Star Wheel with 2 P-350-BB Pins	S-951-BB	9.15
Star Wheel Shaft Outer Bearing	B-249-BB	2.40
Star Wheel Shaft Inner Bearing	B-323-BB	3.35
Star Wheel Shaft Outer & Inner Bearing Screw (6)	S-724-BB	.10
Star Wheel Shaft Collar	C-295-BB	.60
Star Wheel Shaft Collar Set Screw (2)	S-177-E	.10
Intermittent Sprocket with 2 P-350-BB Pins	BB-42	9.75
Intermittent Sprocket Pin (2)	P-350-BB	.10
Intermittent Sprocket Stripper	S-731-BB	.40
Intermittent Sprocket Stripper Screw (2)	S-432-E	.10
Oil Sight (2)	G-226-BB	.10
Oil Sight Cork Gasket (2)	G-225-BB	.10
Oil Sight Nut (2)	N-204-BB	.25
Case Retaining Clamp Pivot Pin (2)	P-353-BB	.10
INTERMITTENT CAM COMPLETE		
Cam Shaft Lock Nut	BB-39	1.60
Intermittent Cam	C-301-BB	*
Intermittent Cam Gear	G-186-BB	2.25
Intermittent Cam Pin	P-360-BB	.30
CAM SHAFT LOCK NUT		
Cam Shaft Lock Nut	N-206-BB	*
Cam Shaft Nut	N-207-BB	*
Cam Shaft Lock Nut Screw (2)	S-1024-BB	.10
Cam Shaft Bearing	B-247-BB	4.20

* Not Sold Separately

ORDER BY PART NUMBER

DESCRIPTION	PART NO.	UNIT LIST PRICE
INTERMITTENT MOVEMENT - Continued		
INTERMITTENT SPROCKET	BB-42	9.75
Intermittent Sprocket (Hardened) with 2 P-350-BB	S-1201-BB	*
Intermittent Sprocket Ring (2)	R-281-BB	*
Case Cover & Bearing Arm Locating Pin	P-121-C	.10
Case Retaining Clamp (2)	C-294-BB	.20
Case Retaining Clamp Screw (2)	S-728-BB	.10
Case Cover Screw (4)	S-729-BB	.10
Intermittent Case	C-375-BB	12.30
Flywheel Shaft Bearing	B-246-BB	3.60
Flywheel Shaft & Cam Shaft Bearing Screw (6)	S-724-BB	.10
Oil Deflector	D-130-BB	.25
Oil Deflector Screw (2)	S-765-BB	.10
Oil Gasket	G-188-BB	.10
Oil Retainer Washer (for Flywheel Gear)	W-232-BB	.10
Oil Retainer Washer (for Cam Shaft Bearing) (2)	W-227-BB	.10
FRAMING CAM AND PINS		
FRAMING CAM AND PINS	A-27	10.35
Framing Cam	C-336-A	*
Framing Cam Pin (3)	P-410-A	.10
Oil Box Locating Pin	P-125-A	*
Framing Cam Adjusting Ring	R-133-A	2.40
Framing Cam Adjusting Ring Screw	S-143-A	.10
UPPER AND LOWER SPROCKETS		
Upper Sprocket with S-720-C Screw	W-145-D	2.25
Upper Sprocket Set Screw	S-720-C	.10
Upper Sprocket Shaft	S-1033-G	1.35
Upper Sprocket Shaft Gear	G-139-G	3.40
Upper Sprocket Shaft Gear (Spiral Bevel)	G-282-G	3.40
Upper Sprocket Shaft Gear Set Screw	S-437-G	.10
Upper Sprocket Stripper	S-867-C	.30
Upper Sprocket Stripper Fastening Screw (2)	S-278-A	.10
Upper Sprocket Stripper Stud	S-573-C	.50
Upper Sprocket Stripper Stud Fastening Screw	S-122-C	.10
UPPER SPROCKET SHAFT OIL TUBE	A-21	.85
Oil Tube	T-150-G	*
Oil Tube Fastening Flange	F-165-A	*
Oil Tube Fastening Flange Gasket	G-211-G	.10
Oil Tube Fastening Flange Screw	S-932-G	.10
Lower Sprocket with S-720-C Screw	W-146-D	2.25
Lower Sprocket Set Screw	S-720-C	.10
* Not Sold Separately		

ORDER BY PART NUMBER

DESCRIPTION	PART NO.	UNIT LIST PRICE
UPPER AND LOWER SPROCKETS - Continued		
LOWER SPROCKET SHAFT AND GEAR	G-35	3.00 †
Lower Sprocket Shaft	S-1031-G	1.80
Lower Sprocket Shaft Gear	G-111-G	.80
Lower Sprocket Shaft Washer	W-114-G	.40
Lower Sprocket Stripper	S-867-C	.30
Lower Sprocket Stripper Fastening Screw (2)	S-278-A	.10
Lower Sprocket Stripper Stud	S-573-C	.50
Lower Sprocket Stripper Stud Fastening Screw	S-122-C	.10
UPPER AND LOWER PAD ROLLER ARMS		
UPPER PAD ROLLER ARM (COMPLETE)	C-20	5.70
Upper Pad Roller	P-102-C	1.05
Upper Pad Roller Arm	A-168-C	1.90
Upper Pad Roller Arm Screw	S-706-C	.15
Upper Pad Roller Arm Nut	N-166-C	.25
Upper Pad Roller Arm Plunger	P-417-C	.20
Upper Pad Roller Arm Plunger Retain Screw	S-869-C	.10
Upper Pad Roller Arm Spring	S-852-C	.10
Upper Pad Roller Stud and Knob Assembly	C-16	1.00
Upper Pad Roller Stud Screw	S-248-A	.10
UPPER PAD ROLLER STUD AND KNOB	C-16	1.00
Upper Pad Roller Stud	S-941-C	*
Upper Pad Roller Stud Knob	K-144-C	*
Upper Pad Roller Arm Stud	S-567-C	.90
Upper Pad Roller Arm Stud Fastening Screw	S-122-C	.10
Upper Pad Roller Arm Stud Washer	W-160-C	.10
Upper Pad Roller Arm Stud Washer Fastening Screw	S-165-C	.10
Upper Pad Roller Stop Pin	P-289-C	.10
Upper Pad Roller Stop Pin Fastening Screw	S-122-C	.10
LOWER PAD ROLLER ARM (COMPLETE)	C-21	5.75
Lower Pad Roller (2)	P-102-C	1.05
Lower Pad Roller Arm	A-137-C	1.90
Lower Pad Roller Arm Screw	S-706-C	.15
Lower Pad Roller Arm Nut	N-166-C	.25
Lower Pad Roller Stud and Knob Assembly (2)	C-12	.45
Lower Pad Roller Stud Screw (2)	S-248-A	.10
LOWER PAD ROLLER STUD AND KNOB	C-12	.45
Lower Pad Roller Stud	S-676-C	*
Lower Pad Roller Stud Knob	K-127-C	*
* Not Sold Separately		

ORDER BY PART NUMBER

DESCRIPTION	PART NO.	UNIT LIST PRICE
UPPER AND LOWER PAD ROLLER ARMS - Continued		
LOWER PAD ROLLER ARM STUD	C-59	1.00
Lower Pad Roller Arm Stud Screw	S-1391-C	.20
Lower Pad Roller Arm Stud	S-1392-C	.75
Lower Pad Roller Stop Pin	P-289-C	.10
Lower Pad Roller Stop Pin Fastening Screw	S-122-C	.10
Lower Pad Roller Arm Spring	S-569-A	.10
Lower Pad Roller Arm Spring Fastening Screw	S-278-A	.10
BACK SHUTTER BRACKET		
BACK SHUTTER BRACKET	G-37	9.75
Back Shutter Bracket	B-357-G	9.45
Shutter Guard Support Frame Dowel Pin (2)	P-466-G	.10
Back Shutter Bracket Dowel Pin (2)	P-409-G	.10
Back Shutter Bracket Fastening Screw (4)	S-882-G	.15
BACK SHUTTER BRACKET OIL TUBE	G-33	.70
Oil Tube	T-149-G	*
Oil Tube Fastening Flange	F-165-A	*
VERTICAL SHAFT UPPER END OIL TUBE	A-20	.80
Oil Tube	T-157-G	*
Oil Tube Fastening Flange	F-165-A	*
Oil Tube Fastening Flange Gasket	G-211-G	.10
Oil Tube Fastening Flange Screw	S-932-G	.10
Back Shutter Bracket Oil Tube Clamp	C-383-D	.20
Back Shutter Bracket Oil Tube Clamp Fastening Screw	S-1000-G	.10
Back Shutter Bracket Oil Tube Clamp Fastening Screw Nut	N-199-G	.10
Back Shutter Bracket Distance Piece	P-414-G	2.25
Back Shutter Bracket Distance Piece Shim .003"	S-947-G	.10
Back Shutter Bracket Distance Piece Shim .005"	S-948-G	.10
Back Shutter Bracket Distance Piece Shim .007"	S-949-G	.10

* Not Sold Separately

ORDER BY PART NUMBER

DESCRIPTION	PART NO.	UNIT LIST PRICE
BACK SHUTTER BRACKET - Continued		
SHUTTER SHAFT AND GEAR	G-27	11.30
Shutter Shaft	S-934-G	7.45
Shutter Shaft Collar	C-345-G	1.30
Shutter Shaft Collar Pin	P-107-G	.10
Shutter Gear	G-203-G	2.05
Shutter Gear Pin	P-182-G	.10
Shutter Shaft Thrust Washer (Formica)	W-250-G	.10
Shutter Shaft Thrust Washer (Steel) (2)	W-208-G	.65
Shutter Shaft Starting Knob	K-145-D	2.05
Shutter Shaft Starting Knob Fastening Screw	S-437-G	.10
BACK SHUTTER BRACKET SELF ALIGNING BALL BEARING	DD-6	12.35
Back Shutter Bracket Ball Bearing Race	B-355-D	2.90
Back Shutter Bracket Ball Bearing Housing	H-217-D	1.80
Back Shutter Bracket Ball Bearing Housing Fastening Screw (2)	S-1131-D	.20
Back Shutter Bracket Ball Bearing Clamp Bushing Assembly	DD-1	2.70
Back Shutter Grease Tube and Cup	DD-5	.70
Back Shutter Bracket Ball Bearing Washer (Felt)	W-253-D	.10
Back Shutter Bracket Ball Bearing Lock Nut	N-211-D	.80
Back Shutter Bracket Bushing Washer (Steel)	W-254-D	.45
Back Shutter Bracket Bearing Dust Cap	C-405-D	.70
Back Shutter Grease Cup Clamp	C-408-D	.65
Grease Cup Clamp Fastening Screw (2)	S-248-A	.10
Shutter Guard Support Frame Fastening Screw (2)	S-1130-D	.10
Thrust Washer	W-208-G	.65
BACK SHUTTER BRACKET BALL BEARING CLAMP BUSHING	DD-1	2.70
Back Shutter Bracket Ball Bearing Clamp Bushing	B-356-D	*
Back Shutter Bracket Ball Bearing Clamp Bushing Screw (2)	S-902-D	*

* Not Sold Separately

ORDER BY PART NUMBER

DESCRIPTION	PART NO.	UNIT LIST PRICE
SHUTTER GUARD BRACKET		
SHUTTER GUARD BRACKET	D-68	\$ 37.15
Shutter Guard Support Frame	F-172-D	9.00
Shutter Guard Support Frame Oil Tube	T-170-D	.25
Shutter Guard Support Frame Oil Tube Clamp	C-402-D	.10
Shutter Guard Support Frame Oil Tube Clamp Fastg. Screw	S-987-D	.10
Shutter Guard Rod Fastening Screw (3)	S-902-D	.10
Framing Gear	G-204-D	2.05
Framing Gear Fastening Screw	S-893-D	.10
Framing Gear Flange	F-168-D	3.40
Framing Gear Friction Disc	D-138-D	.70
Framing Gear Friction Disc Retaining Screw (2)	S-863-A	.10
Framing Gear Friction Ring	R-240-D	1.80
Framing Gear Friction Ring Screw	S-897-C	.10
Framing Gear Handle Rod	R-257-D	1.80
Framing Gear Handle Knob (2)	K-137-D	.75
Framing Gear Handle Knob Screw (2)	S-897-C	.10
Door Opening Lever (Film Trap)	L-162-D	.70
Door Opening Lever Screw	S-897-C	.10
Door Opening Lever Stop Screw	S-884-D	.25
Door Opening Stop Bushing	B-288-D	.10
Door Opening Stop Screw	S-886-D	.10
Film Gate Lever	L-177-D	2.25
Film Gate Lever Screw	S-897-D	.10
Film Gate Opening Rod	R-264-D	1.15
Film Gate Opening Rod Collar	C-347-D	1.25
Film Gate Opening Rod Collar-Screw	S-897-C	.10
Friction Device Spring	S-978-D	.10
Friction Device Washer (2)	W-223-D	.45
Cover Holding Support Rod (3)	R-255-D	.90
Lock Nut and Screw	G-25	1.30
LOCK NUT AND SCREW	G-25	1.30
Friction Device Lock Nut	N-198-G	1.15
Friction Device Lock Nut Set Screw	S-989-G	.15
Shutter Guard Support Frame Fastening Screw (2)	S-1130-D	.20
Shutter Guard Spacer (6)	S-957-D	.20
BACK SHUTTER GREASE TUBE AND CUP	DD-5	.70
Back Shutter Grease Cup	C-331-D	*
Back Shutter Grease Tube	T-174-D	*

* Not Sold Separately

ORDER BY PART NUMBER

DESCRIPTION	PART NO.	UNIT LIST PRICE
SHUTTER GUARDS, SPOTSIGHT BOX, SHUTTER		
REAR SHUTTER GUARD LIGHT CAP	DD-23	\$ 2.05
Rear Shutter Guard Light Cap	C-417-D	*
Rear Shutter Guard Light Cap Ball Catch (2)	C-418-D	*
SHUTTER GUARD (FRONT) (INCLUDES DD-4)	D-74	12.60
Shutter Guard (Front)	G-219-D	4.05
Shutter Guard Holding Support (3)	S-966-D	.55
Shutter Guard Holding Support Plate (3)	P-562-D	.20
Shutter Guard Holding Support Plate Fastening Screw (6)	S-885-A	.10
SHUTTER GUARD (REAR)	D-75	7.20
Shutter Guard (Rear)	G-218-D	4.05
Shutter Guard Holding Support (3)	S-966-D	.55
Shutter Guard Holding Support Plate (3)	P-562-D	.20
Shutter Guard Holding Support Plate Fastening Screw (6)	S-885-A	.10
SHUTTER GUARD (FRONT) (STEREO) (INCLUDES DD-4)	D-76	14.00
Shutter Guard (Front) (Stereo)	G-217-D	5.20
Shutter Guard Holding Support (3)	S-966-D	.55
Shutter Guard Holding Support Plate (3)	P-562-D	.20
Shutter Guard Holding Support Plate Fastening Screw (6)	S-885-A	.10
SHUTTER GUARD (REAR) (STEREO)	D-77	9.50
Shutter Guard (Rear) (Stereo)	G-216-D	5.20
Shutter Guard Holding Support (3)	S-966-D	.55
Shutter Guard Holding Support Plate (3)	P-562-D	.20
Shutter Guard Holding Support Plate Fastening Screw (6)	S-885-A	.10
Shutter Guard Fastening Knob (3)	K-141-D	.55
Fire Shield Hood	H-243-R	1.60
Fire Shield Hood Fastening Screw (3)	S-905-D	.10
SPOT SIGHT BOX MOUNT ASSEMBLY	DD-4	5.60
Spot Sight Box Mount Assembly Screw (Short) (2)	S-248-A	.10
Spot Sight Box Mount Assembly Screw (Long) (2)	S-1138-D	.10
Spot Sight Box Seating Plate	P-543-D	1.45
Spot Sight Box Seating Plate Fastening Screw (4)	S-987-D	.10
Spot Sight Box Guide Rail (2)	R-274-D	.45
Spot Sight Box Upper Retaining Strip	S-1134-D	1.10
Spot Sight Box Lower Retaining Strip	S-1135-D	.70
Spot Sight Box Retaining Spring (3)	S-1136-D	.10
Spot Sight Box Retaining Spring Screw (6)	S-1137-D	.10
Spot Sight Box Stop Screw (2)	S-1139-D	.10

* Not Sold Separately

ORDER BY PART NUMBER

DESCRIPTION	PART NO.	UNIT LIST PRICE
SHUTTER GUARDS, SPOTSIGHT BOX, SHUTTER - Continued		
SPOT SIGHT BOX ASSEMBLY	D-64	8.55
Spot Sight Box Only	D-67	5.65
Spot Sight Glass	G-220-D	.20
Spot Sight Glass Retaining Screw	S-101-C	.10
Spot Sight Glass Tension Spring	S-962-D	.20
Cooling Plate	P-462-D	1.35
Cooling Plate Fastening Screw (3)	S-248-A	.10
Light Seal	S-961-D	.10
Light Seal Fastening Screw (4)	S-987-D	.10
Pilot Light Shield	S-1030-D	.20
SPOT SIGHT BOX ONLY	D-67	5.65
Spot Sight Box Bottom	B-317-D	*
Spot Sight Box Top	B-318-D	*
Spot Sight Box Center	B-319-D	*
Front Plate Fastening Screw (Long)	S-248-A	.10
Front Plate Fastening Screw (Short) (3)	S-278-A	.10
TWO WING ADJUSTABLE SHUTTER AND SPIDER	D-99	7.90
Two Wing Adjustable Shutter	D-89	4.50
Shutter Spider	D-95	2.70
Shutter Fastening Screw (5)	S-192-D	.10
TWO WING ADJUSTABLE SHUTTER	D-89	4.50
Shutter Fan Blade (2)	B-332-D	.25
Shutter Fan Blade Screw (6)	S-106-D	.10
Shutter Adjustable Blade	B-341-D	.90
Shutter Fan Blade Screw Washer (8)	W-231-D	.10
Shutter	S-1045-D	1.60
Shutter Fastening Screw (2)	S-192-D	.10
SHUTTER SPIDER	D-95	2.70
Shutter Spider	S-1016-D	*
Shutter Spider Clamp Screw (2)	S-1026-D	.10
AIR DEFLECTOR AND APERTURE COOLING UNIT	E-74	15.00
Fire Shield Hood Glass Retaining Clip (3)	C-479-E	.10
Fire Shield Hood Glass	G-292-E	2.00
Fire Shield Hood Glass Holder	H-246-E	3.00
Fire Shield Hood Plate	P-663-E	3.50
Fire Shield Hood Glass Holder Retainer	R-303-E	3.00
Fire Shield Hood Screws (3)	S-132-E	.10
Fire Shield Hood Slide Pressure Spring (2)	S-1430-E	.10
Fire Shield Hood Plate Screw (4)	RP-22	.10
Fire Shield Hood Pressure Spring Screw (4)	RP-98	.10
Fire Shield Hood Retainer Screw (3)	RP-132	.10
Light Cap Assembly (Cut out)	DD-58	2.00

* Not Sold Separately

ORDER BY PART NUMBER

DESCRIPTION	PART NO.	UNIT LIST PRICE
PILOT LIGHT		
PILOT LAMP ASSEMBLY	D-65	\$ 10.00
Pilot Lamp	L-170-D	.35 Net
Pilot Lamp Cord	C-369-D	.30
Pilot Lamp Cord Connecting Screw	S-970-D	.10
Pilot Lamp Flexible Conduit	C-367-D	.45
Pilot Lamp Cable Bushing	B-316-D	.10
Pilot Lamp Cable Clamp (Plated)	C-366-D	.45
Pilot Lamp Cable Clamp Screw	S-1069-D	.10
Pilot Lamp Cable Clamp Nut (Steel)	N-197-D	.10
Pilot Lamp Cable Clamp (Galvanized)	C-368-D	.10
Pilot Lamp Cable Clamp Fastening Screw (2)	S-973-D	.10
Pilot Lamp Switch (Toggle)	S-968-D	.75
Pilot Lamp Switch Adaptor	A-183-D	.70
Pilot Lamp Socket Shell (Candelabra)	S-965-D	.10
Pilot Lamp Socket Contact Spring	S-964-D	.10
Pilot Lamp Socket Insulating Washer	W-222-D	.10
Pilot Lamp Socket Rivet	R-304-D	.10
Pilot Lamp Socket Washer	W-309-D	.10
Pilot Lamp Socket Terminal	T-154-D	.10
Pilot Lamp Socket Terminal Fastening Screw (2)	S-971-D	.10
Pilot Lamp Socket Terminal Insulating Washer	W-221-D	.25
Pilot Lamp Tube Assembly	D-66	3.85
Pilot Lamp Reflector (Chrome)	R-260-D	.10
Pilot Lamp Reflector Fastening Screw	S-972-D	.10
Pilot Lamp Base and Socket Guard	G-240-D	.45
Pilot Lamp Base and Socket Guard Fastening Screw (2)	S-1133-D	.10
PILOT LAMP TUBE	D-66	3.85
Pilot Lamp Tube	T-155-D	*
Pilot Lamp Tube Seal	S-963-D	*
Pilot Lamp Assembly Fastening Screw (to Shutter Case) (2)	S-106-D	.10
VERTICAL SHAFT, GOVERNOR, SHUTTER GEAR BRACKET, FRAMING SLIDE		
VERTICAL SHAFT AND DOUBLE SPIRAL BEVEL GEAR	G-65	11.50
Vertical Shaft	S-870-G	1.45
Double Spiral Bevel Gear with Collar and 3 Screws	G-87	9.85 X
Vertical Shaft Top Bevel Gear	G-138-G	2.85
Vertical Shaft Top Spiral Bevel Gear	G-283-G	2.85
Vertical Shaft Top Bevel Gear Fastening Screw	S-437-G	.10
Vertical Shaft Washer #1	W-124-G	.20
Vertical Shaft Washer #2	W-125-G	.20
VERTICAL SHAFT AND DOUBLE BEVEL GEAR	G-24	8.25
Vertical Shaft	S-870-G	1.45
Double Bevel Gear with Taper Pin	G-61	6.45
Double Bevel Gear Taper Pin	P-368-G	.10

* Not Sold Separately

ORDER BY PART NUMBER

DESCRIPTION	PART NO.	UNIT LIST PRICE
VERTICAL SHAFT, GOVERNOR, SHUTTER GEAR BRACKET, FRAMING SLIDE - Cont.		
DOUBLE SPIRAL BEVEL GEAR AND CLAMP	G-87	9.85
Double Spiral Bevel Gear Hub Clamp Collar	C-490-G	*
Vertical Shaft Driving Spiral Bevel Gear	G-298-G	*
Vertical Shaft Driven Spiral Bevel Gear	G-299-G	*
Double Spiral Bevel Gear Dowel Pin	P-687-G	*
Screw To Hold Driving and Driven Gears (3)	S-1048-A	*
Clamp Collar Screw (3)	S-1447-G	.10
Double Spiral Bevel Gear Shim .026"	S-1479-G	*
Lock Washer (3)	FP-119	*
VERTICAL SHAFT INTERMEDIATE OIL TUBE	A-19	.80
Oil Tube	T-144-A	*
Oil Tube Fastening Flange	F-165-A	*
Oil Tube Fastening Flange Gasket	G-211-G	.10
Oil Tube Fastening Flange Screw	S-932-G	.10
GOVERNOR WEIGHTS AND LINKS	D-3 PER SET	1.50
Governor Weight (2)	W-126-D	*
Governor Weight Link (2)	L-112-D	.10
Governor Weight Link Screw (2)	S-100-E	.10
Governor Lower Link Holder	H-120-G	1.35
Governor Upper Link Holder	H-121-G	1.60
Governor Weight Link (2)	L-112-D	.10
Governor Weight Link Holder Screw (4)	S-151-D	.10
Governor Weight Stop	S-357-G	.30
Governor Assembly Fastening Screw	S-437-G	.10
GOVERNOR LIFT LEVER ASSEMBLY	D-2	1.20
Governor Lift Lever	L-105-D	1.10
Governor Lift Lever Screw	S-493-D	.10
Governor Lift Lever Pivot Screw	S-150-C	.10
GOVERNOR LIFT LEVER LINK	C-9	.85
Governor Lift Lever Link	L-110-C	.10
Governor Lift Lever Connecting Link	L-111-C	.65
Governor Lift Lever Connecting Link Pivot Screw	S-101-C	.10
SHUTTER GEAR BRACKET	G-30	34.90
Shutter Gear Bracket	B-314-G	7.00
Shutter Gear Shaft	S-871-G	1.00
Shutter Spiral Gear (Formica)	G-248-G	2.50
Shutter Spiral Gear Fastening Screw	S-437-G	.10
Spiral Driving Gear (Broached Hole)	G-116-G	1.50
Spiral Driving Gear Shaft	S-1082-G	2.70
Spiral Driving Gear Shaft Set Collar (2)	C-193-G	.70
Spiral Driving Gear Shaft Set Collar Fastening Screw (2)	S-436-G	.10
Shutter Driving Bevel Gear	G-115-G	2.65
Shutter Driving Bevel Gear Thrust Washer	W-105-B	.40
Framing Slide	G-4	7.25
Framing Slide Guide Rod	R-120-G	.20
Focusing Slide Set Screw	S-141-A	.10

* Not Sold Separately

ORDER BY PART NUMBER

DESCRIPTION	PART NO.	UNIT LIST PRICE
VERTICAL SHAFT, GOVERNOR, SHUTTER GEAR BRACKET, FRAMING SLIDE - Cont.		
SHUTTER GEAR BRACKET	G-78	34.90
Shutter Gear Bracket	B-314-G	7.00
Shutter Gear Shaft	S-871-G	1.00
Shutter Spiral Gear (Formica)	G-248-G	2.50
Shutter Spiral Gear Fastening Screw	S-437-G	.10
Spiral Driving Gear (Broached Hole)	G-116-G	1.50
Spiral Driving Gear Shaft	S-1082-G	2.70
Spiral Driving Gear Shaft Set Collar (2)	C-193-G	.70
Spiral Drive Gear Shaft Collar Screw (2)	S-436-G	.10
Shutter Driving Spiral Bevel Gear ✓	G-278-G	2.65
Shutter Driving Gear Thrust Washer	W-105-G	.40
Framing Slide	G-4	7.25
Framing Slide Guide Rod	R-120-G	.20
Framing Slide Set Screw	S-141-A	.10
FRAMING SLIDE	G-4	7.25
Framing Slide	S-321-G	6.75
Framing Slide Lever Block	B-106-G	.25
Framing Slide Lever Pin	P-128-G	.10
Shutter Gear Bracket Fastening Screw (Long)	S-257-G	.10
Shutter Gear Bracket Fastening Screw (Short)	S-145-G	.10
Shutter Gear Bracket Dowel Pin (2)	P-169-G	.10
SHUTTER GEAR BRACKET OIL TUBE & FLANGE (FRONT END)	G-32	.70
Oil Tube	T-147-G	*
Oil Tube Fastening Flange	F-165-A	*
SHUTTER GEAR BRACKET OIL TUBE	G-39	.90
Oil Tube	T-164-G	*
Oil Tube Fastening Flange	F-165-A	*
Oil Tube Fastening Flange Gasket	G-211-G	.10
Oil Tube Wick	W-226-A	.10
Oil Tube Fastening Flange Screw	S-932-G	.10
Framing Slide Lever	L-136-G	3.15
Framing Slide Lever Spacing Collar	C-381-G	.60
Framing Slide Lever Stud	S-899-G	.40
Framing Slide Lever Stud Screw	S-145-G	.10
Framing Lever Retaining Screw	S-165-C	.10
Framing Lever Retaining Washer	W-160-C	.10
Framing Lever Retaining Screw (in frame)	S-165-C	.10
Framing Slide Lever Spring Pin	P-422-G	.25
Shutter Adjusting Slide	S-856-A	1.25
Shutter Adjusting Slide Spring	S-858-G	.25
Shutter Adjusting Slide Spring Pin	P-419-G	.10
Shutter Adjusting Slide Gib	G-202-A	.10
SHUTTER ADJUSTING ROD	A-17	1.75
Shutter Adjusting Rod	R-242-A	1.00
Shutter Adjusting Rod Collar	C-355-A	.45

* Not Sold Separately

ORDER BY PART NUMBER

DESCRIPTION	PART NO.	UNIT LIST PRICE
VERTICAL SHAFT, GOVERNOR, SHUTTER GEAR BRACKET, FRAMING SLIDE - Cont.		
Shutter Adjusting Rod Pin	P-430-A	.10
Shutter Adjusting Gear (Large)	G-205-A	4.05
Shutter Adjusting Gear Fastening Screw	S-885-A	.10
FRAMING SLIDE ARM	G-3	2.50
Framing Slide Arm	A-110-G	*
Framing Slide Arm Roller	R-128-G	.15
Framing Slide Arm Roller Pin	P-127-G	.10
Framing Slide Arm Shoe	S-312-G	*
Framing Slide Stop Screw	S-863-A	.10
HANDLE, INTERMEDIATE SHAFT & GEAR		
HANDLE SHAFT	A-11	11.95
Handle Shaft	S-909-A	*
Handle Shaft Pin (2)	P-115-F	.10
Handle Shaft Plug (2)	P-649-A	.10
Main Driving Gear Clutch	C-126-A	1.60
Handle Clutch Collar	C-354-A	1.45
DRIVING HANDLE	D-60	5.65
Driving Handle (Wooden)	H-109-D	*
Driving Handle Retaining Washer	W-103-D	*
Driving Arm	A-172-D	*
Driving Stud	S-366-D	*
Driving Handle Retaining Screw	S-906-D	.40
Driving Handle Shaft Oil Shield	S-1153-D	1.05
Main Drive Gear	G-112-G	5.30
Main Drive Gear (R.C.A.)	G-215-G	5.30
Main Drive Gear Retaining Screw	S-1160-G	1.45
Main Drive Gear Retaining Screw Spring Pawl	P-554-G	.40
INTERMEDIATE SHAFT AND GEAR	G-34	15.00
Intermediate Shaft	S-1032-G	2.25
Intermediate Shaft Retaining Collar	C-378-G	1.50
Intermediate Shaft Retaining Collar Set Screw	S-125-G	.10
Intermediate Gear (Steel)	G-134-G	1.50
Intermediate Gear (Formica) and Plate	G-12	3.00
Intermediate Bevel Gear	G-135-G	4.30
Intermediate Gear Retaining Washer	W-140-G	.15
Intermediate Gear Washer Retaining Screw	S-145-G	.10
Intermediate Bevel Gear Washer	W-306-G	.10

* Not Sold Separately

ORDER BY PART NUMBER

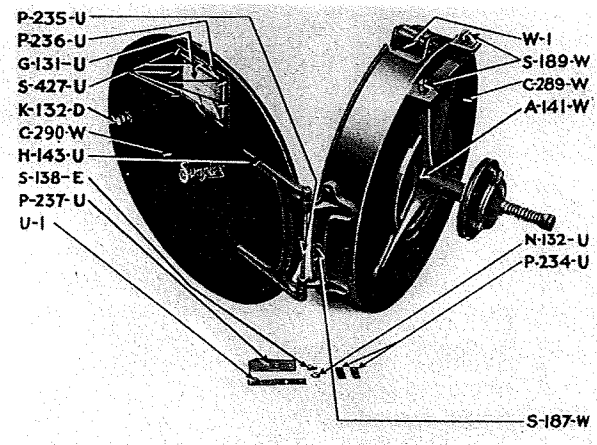
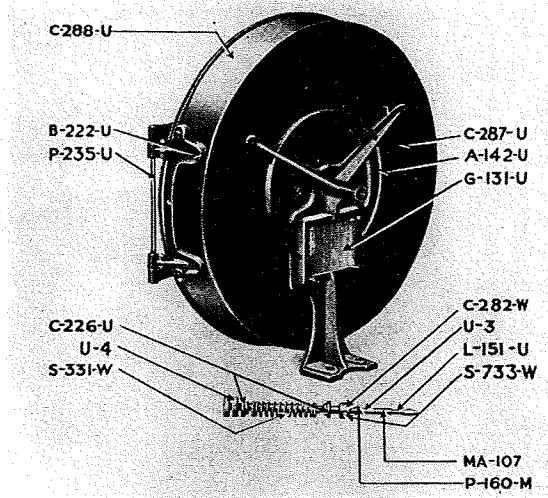
DESCRIPTION	PART NO.	UNIT LIST PRICE
HANDLE, INTERMEDIATE SHAFT & GEAR - Continued		
INTERMEDIATE SHAFT AND GEAR	G-74	15.00
Intermediate Shaft	S-1032-G	2.25
Intermediate Shaft Retaining Collar	C-378-G	1.50
Intermediate Shaft Retaining Collar Set Screw	S-125-G	.10
Intermediate Gear (Steel)	G-134-G	1.50
Intermediate Gear (Formica) and Plate	G-12	3.00
Intermediate Spiral Bevel Gear	G-279-G	4.30
Intermediate Gear Retaining Washer	W-140-G	.15
Intermediate Gear Washer Retaining Screw	S-145-G	.10
Intermediate Bevel Gear Washer	W-306-G	.10
Intermediate and Main Drive Shaft Oil Tube Clip	C-360-G	.10
Intermediate and Main Drive Shaft Oil Tube Clip Fastening Screw (2)	S-278-A	.10
MAIN DRIVE AND LOWER SPROCKET SHAFT OIL TUBE & FLANGE	A-18	1.15
Oil Tube	T-143-A	*
Oil Tube Fastening Flange	F-165-A	*
Oil Tube Fastening Flange Gasket	G-211-G	.10
Oil Tube Fastening Flange Screw	S-932-G	.10
INTERMEDIATE GEAR AND PLATE	G-12	3.00
Intermediate Gear (Formica)	G-181-G	*
Intermediate Gear Plate	P-334-G	*
Intermediate Gear Screw (3)	S-705-G	.10
UPPER MAGAZINE ROLLER HOLDER		
UPPER MAGAZINE ROLLER HOLDER	C-17	6.75
Upper Magazine Roller Holder	H-206-C	3.60
Upper Magazine Roller (Small) (2)	R-160-C	.50
Upper Magazine Roller (Large)	R-161-C	.55
Upper Magazine Roller Screw (6)	S-485-C	.10
Upper Magazine Roller Holder Fastening Screw (Long)	S-165-C	.10
Upper Magazine Roller Holder Fastening Screw (Short) (2)	S-897-C	.10
UPPER MAGAZINE ROLLER HOLDER (MASS. REQUIREMENTS)	C-15	13.05
Upper Magazine Roller Holder Block, Right	B-260-C	1.90
Upper Magazine Roller Holder Block, Left	B-296-C	1.80
Upper Magazine Roller Holder Front Plate, Right	P-374-C	.65
Upper Magazine Roller Holder Front Plate, Left	P-426-C	.80
Upper Magazine Roller Holder Back Plate	P-427-C	1.60
Upper Magazine Roller (4)	R-227-C	.70
Side Plate Fastening Screw (Short) (2)	S-192-D	.10
Side Plate Fastening Screw (Long) (10)	S-776-C	.10
Upper Magazine Arm Distance Plate (Mass. Req.)	P-376-U	1.00
Upper Magazine Fastening Screw (2)	S-1001-W	.45
Upper Magazine Roller Holder Fastening Screw (Long)	S-723-I	.10
Upper Magazine Roller Holder Fastening Screw (Short) (2)	S-897-C	.10

* Not Sold Separately

DESCRIPTION	PART NO.	UNIT LIST PRICE
18" UPPER MAGAZINE		
18" UPPER MAGAZINE COMPLETE	"U"	\$ 37.50
Upper Magazine Case (18")	C-287-U	9.70
Upper Magazine Arm	A-142-U	11.05
Upper Magazine Arm Fastening Screw (9)	S-922-U	.10
Upper Magazine Arm Fastening Screw Washer (9)	RP-140	.10
Upper Magazine Hinge Bracket	B-222-U	1.60
Upper Magazine Hinge Bracket Fastening Screw (5)	S-187-W	.10
Upper Magazine Cover Hinge	H-143-U	1.35
Upper Magazine Cover Hinge Fastening Screw (5)	S-187-W	.10
Upper Magazine Cover Hinge Pin	P-235-U	.20
Upper Magazine Cover (18")	C-288-U	7.40
Upper Magazine Cover Knob	K-132-D	.75
Upper Magazine Cover Knob Fastening Screw (2)	S-987-D	.10

1
 225
 150
 300
 1130

 1105



18" UPPER AND LOWER MAGAZINE

ORDER BY PART NUMBER

DESCRIPTION	PART NO.	UNIT LIST PRICE
18" UPPER MAGAZINE - Continued		
UPPER MAGAZINE LATCH ASSEMBLY	U-1	.70
Upper Magazine Latch	L-127-U	*
Upper Magazine Latch Rivet (2)	R-146-U	*
Upper Magazine Latch Spring	S-421-U	*
Upper Magazine Latch Distance Piece (2)	P-234-U	.10
Upper Magazine Latch Protector	P-237-U	.45
Upper Magazine Latch Fastening Screw (2)	S-138-E	.10
Upper Magazine Latch Fastening Screw Nut (2)	N-132-U	.10
Upper Magazine Wire Glass	G-131-U	.20
Upper Magazine Wire Glass Retaining Spring	S-721-U	.10
Upper Magazine Wire Glass Retaining Plate (2)	P-236-U	.30
Upper Magazine Wire Glass Retaining Plate Screw (8)	S-427-U	.10
Upper Magazine Wire Glass Retaining Plate Nut (8)	N-135-W	.10
UPPER MAGAZINE SHAFT COMPLETE	U-3	1.50
Upper Magazine Shaft	S-702-U	1.35
Reel Lock	L-151-U	.20
Reel Lock Plunger	P-211-M	.10
Reel Lock Plunger Spring	S-345-U	.10
Reel Shaft Lock Pin	MA-107	.10
UPPER MAGAZINE SHAFT ADJUSTING NUT X	U-4	.50
Upper Magazine Shaft Adjusting Nut X	N-149-U	*
Upper Magazine Shaft Adjusting Nut Set Screw	S-165-C	*
Upper Magazine Shaft Collar Fastening Screw	S-733-W	.10
Upper Magazine Shaft Collar Pin	P-160-M	.10
Upper Magazine Friction Adjusting Spring	S-331-W	.10
Upper Magazine Friction Adjusting Spring Collar (2)	C-226-U	.15
Reel Case Collar	C-282-W	.35

* Not Sold Separately

ps 401

ORDER BY PART NUMBER

DESCRIPTION	PART NO.	UNIT LIST PRICE
18" TAKEUP MAGAZINE - Continued		
TAKEUP MAGAZINE LATCH ASSEMBLY	U-1	.70
Takeup Magazine Latch	L-127-U	*
Takeup Magazine Latch Rivet (2)	R-146-U	*
Takeup Magazine Latch Spring	S-421-U	*
Takeup Magazine Latch Distance Piece (2)	P-234-U	.10
Takeup Magazine Latch Protector	P-237-U	.45
Takeup Magazine Latch Protector Fastening Screw (2)	S-138-E	.10
Takeup Magazine Latch Protector Fastening Screw Nut (2)	N-132-U	.10
Takeup Magazine Wire Glass	G-131-U	.20
Takeup Magazine Wire Glass Retaining Plate (2)	P-236-U	.30
Takeup Magazine Wire Glass Retaining Plate Screw (8)	S-138-E	.10
Takeup Magazine Wire Glass Retaining Plate Nut (8)	N-135-W	.10
TAKEUP WITH FIBRE DISC		
TAKEUP (COMPLETE)	W-29	14.00
TAKEUP (COMPLETE) (RCA ONLY)	W-30	14.00
Takeup Pulley	BS-48	3.80
Takeup Tension Spring (Not for RCA)	BS-56	.10
Takeup Tension Spring (RCA Only)	S-1215-W	.65
Takeup Tension Spring Collar	BS-57	.45
Takeup Friction Disc Assembly	BS-4344	3.80
Takeup Friction Disc Set Screw (2)	S-1182-W	.10
Takeup Shaft Assembly	W-28	3.40
Takeup Shaft Bearing Bushing	B-383-W	4.70
Takeup Shaft Bearing Bushing Fastening Set Screw	S-223-G	.10
Takeup Shaft Adjusting Nut Assembly	U-4	.50
Takeup Shaft Washer	BA-110	.10
Takeup Pulley Belt (48")	R-99	1.00
Takeup Shaft Collar (RCA Only)	C-425-W	.25
TAKEUP FRICTION DISC		
Takeup Friction Disc (Fibre)	BS-45	.50
Takeup Friction Disc Flange	BS-44	2.30
TAKEUP SHAFT		
Takeup Shaft	S-1181-W	1.50
Takeup Shaft Collar	C-282-W	.35
Takeup Shaft Collar Fastening Screw —	S-733-W	.10
Takeup Shaft Collar Pin	P-160-M	.10
Takeup Shaft Reel Lock	L-151-U	.20
Takeup Shaft Reel Lock Pin	MA-107	.10
Takeup Shaft Plunger	P-211-M	.10
Takeup Shaft Plunger Spring	S-345-U	.10

* Not Sold Separately

ORDER BY PART NUMBER

DESCRIPTION	PART NO.	UNIT LIST PRICE
18" TAKEUP MAGAZINE - Continued		
TAKEUP SHAFT ADJUSTING NUT	U-4	.50
Takeup Shaft Adjusting Nut.	N-149-U	*
Takeup Shaft Adjusting Nut Screw	S-165-C	*
TAKEUP WITH LEATHER WASHER		
Takeup Pulley & Pin Assembly	W-27	2.50
Takeup Shaft Assembly	W-5	2.70
Takeup Shaft Adjusting Nut Assembly X	U-4	.50
Takeup Shaft Bearing Bushing	B-195-W	3.80
Takeup Shaft Friction Disc	D-121-W	1.35
Takeup Shaft Friction Disc Set Screw	S-442-G	.10
Takeup Floating Friction Disc	D-122-W	.75
Takeup Friction Adjusting Spring	S-331-W	.10
Takeup Friction Adjusting Spring Collar (2)	C-226-U	.15
Takeup Friction Washer (Leather)	W-163-W	.10
Takeup Pulley Belt (48")	R-99	1.00
Takeup Bushing Extension Spacer #1 (RCA Only)	S-923-W	.30
Takeup Bushing Extension Spacer #2 (RCA Only)	S-924-W	.40
TAKEUP PULLEY & PIN		
Takeup Pulley	W-27	2.50
Takeup Pulley Pin (3)	P-561-W	*
	P-178-R	*
TAKEUP SHAFT		
Takeup Shaft	W-5	2.70
Takeup Shaft Collar	S-703-W	1.60
Takeup Shaft Collar Fastening Screw	C-282-W	.35
Takeup Shaft Collar Pin	S-733-W	.10
Takeup Shaft Reel Lock	P-160-M	.10
Takeup Shaft Reel Lock Pin	L-151-U	.20
Takeup Shaft Plunger	MA-107	.10
Takeup Shaft Plunger Spring	P-211-M	.10
	S-345-U	.10
ACCESSORIES		
STEREO LENS HOLDER ASSEMBLY		
Stereo Lens Holder	R-5	2.80
Stereo Lens Holder Clamp Ring	H-146-R	*
	R-112-R	*
STEREO UNIVERSAL CLAMP		
Stereo Universal Clamp Body	R-6	4.70
Stereo Universal Clamp	B-150-R	*
Stereo Universal Clamp Pin	C-190-R	*
Stereo Universal Clamp Wing Screw	P-178-R	*
Stereo Universal Clamp Thumb Screw	S-155-R	1.15
	S-796-D	1.00
STEREO LENS HOLDER AND CLAMP		
(Includes R-5 and R-6)	R-11	7.65

* Not Sold Separately

ORDER BY PART NUMBER

DESCRIPTION	PART NO.	UNIT LIST PRICE
ACCESSORIES - Continued		
BUSHING ASSEMBLY, TYPE "1"	R-32	\$ 18.45
Bushing	B-321-R	7.90
Extension Tube	E-114-R	5.40
Lens Locating Ring	R-258-R	4.05
Lens Locating Ring Screw	S-983-R	.45
Bushing Clamp Screw (2)	S-984-R	.10
BUSHING ASSEMBLY, TYPE "2"	R-33	16.90
Bushing	B-324-R	6.50
Extension Tube	E-114-R	5.40
Lens Locating Ring	R-258-R	4.05
Lens Locating Ring Screw	S-983-R	.45
Bushing Clamp Screw (2)	S-984-R	.10
BUSHING ASSEMBLY, TYPE "3"	R-34	9.00
Bushing	B-324-R	6.50
Extension Tube	E-112-R	2.95
Bushing Clamp Screw (2)	S-984-R	.10
BUSHING ASSEMBLY, TYPE "4"	R-35	9.45
Bushing	B-324-R	6.50
Bushing Thread Guard	G-221-R	2.25
Bushing Clamp Screw (2)	S-984-R	.10
EXTENSION TUBE ASSEMBLY, TYPE "1"	R-36	13.75
Adapter	A-188-R	2.70
Extension Tube	E-115-R	4.95
Lens Locating Ring	R-258-R	4.05
Lens Shim, Type "1"	S-981-R	.55
Lens Locating Ring Screw	S-983-R	.45
Lens Shim, Type "2"	S-992-R	.85
EXTENSION TUBE ASSEMBLY, TYPE "2"	R-37	11.25
Adapter	A-187-R	2.70
Extension Tube	E-113-R	3.85
Lens Locating Ring	R-258-R	4.05
Lens Locating Ring Screw	S-983-R	.45
EXTENSION TUBE ASSEMBLY, TYPE "3"	R-38	11.25
Adapter	A-186-R	2.70
Extension Tube	E-113-R	3.85
Lens Locating Ring	R-258-R	4.05
Lens Locating Ring Screw	S-983-R	.45
EXTENSION TUBE ASSEMBLY, TYPE "4"	R-39	11.25
Adapter	A-185-R	2.70
Extension Tube	E-113-R	3.85
Lens Locating Ring	R-258-R	4.05
Lens Locating Ring Screw	S-983-R	.45

ORDER BY PART NUMBER

DESCRIPTION	PART NO.	UNIT LIST PRICE
ACCESSORIES - Continued		
LENS LOCATING RING ASSEMBLY	R-40	4.70
Lens Locating Ring	R-258-R	4.05
Lens Locating Ring Screw	S-983-R	.45
EXTENSION TUBE ASSEMBLY, TYPE "5"	R-42	13.00
Adapter	A-185-R	3.00
Extension Tube	E-114-R	5.40
Lens Locating Ring	R-258-R	4.05
Lens Locating Ring Screw	S-983-R	.45
EXTENSION TUBE ASSEMBLY, TYPE "6"	R-43	10.45
Adapter	A-185-R	2.70
Extension Tube	E-112-R	2.95
Lens Locating Ring	R-258-R	4.05
Lens Locating Ring Screw	S-983-R	.45
EXTENSION TUBE ASSEMBLY, TYPE "7"	R-44	5.75
Adapter	A-185-R	2.70
Extension Tube	E-112-R	2.95
EXTENSION TUBE ASSEMBLY, TYPE "8"	R-45	10.30
Adapter	A-187-R	2.70
Extension Tube	E-112-R	2.95
Lens Locating Ring	R-258-R	4.05
Lens Locating Ring Screw	S-983-R	.45
EXTENSION TUBE ASSEMBLY, TYPE "9"	R-46	10.45
Adapter	A-186-R	2.70
Extension Tube	E-112-R	2.95
Lens Locating Ring	R-258-R	4.05
Lens Locating Ring Screw	S-983-R	.45
EXTENSION TUBE ASSEMBLY, TYPE "10"	R-47	7.55
Adapter	A-184-R	4.50
Extension Tube	E-112-R	2.95
STEREO ATTACHMENT COMPLETE	R-49	17.10
Stereo Slide and Arm	D-15	8.80
Stereo Lens Holder and Clamp	R-11	7.65
Stereo Rod	R-127-R	.60
Stereo Slide Friction Spring	S-343-A	.10
OIL DRAIN TUBE AND PLUG	R-52	.70
Oil Drain Tube Plug	P-472-BB	*
Oil Drain Tube	T-144-A	*

* Not Sold Separately

ORDER BY PART NUMBER

DESCRIPTION	PART NO.	UNIT LIST PRICE
ACCESSORIES - Continued		
LENS LOCATING RING ASSEMBLY	R-54	5.30
Lens Locating Ring Extension Plate	P-483-R	.25
Lens Locating Ring	R-266-R	4.30
Extension Plate Fastening Screw (3)	S-233-U	.10
Extension Plate Screw	S-983-R	.45
UNIT PARTS		
Adapter for Type "6" for old style B & L lenses	A-190-R	2.70
Adapter for Type "7" for Superlite Series #3	A-191-R	3.15
Bushing Hole Shim, Type "1"	S-982-R	.75
Bushing Hole Shim, Type "2"	S-995-R	8.55
THIDE CHANGEOVER BRACKET		
THIDE CHANGEOVER BRACKET		
Thide Changeover Bracket	DD-19	5.40
Thide Changeover Fastening Screw (2)	B-375-D	4.05
Thide Changeover Fastening Screw Washer (2)	S-1165-D	.35
Thide Changeover Fastening Screw Nut (2)	W-138-A	.10
Cover Screw (2)	N-213-D	.10
Magazine and Bracket Fastening Screw (2)	S-872-D	.20
THIDE CHANGEOVER BRACKET (FOR MECHANISM WITH SPEED INDICATOR)		
Thide Changeover Bracket	DD-21	5.40
Thide Changeover Fastening Screw (2)	B-375-D	4.05
Thide Changeover Fastening Screw Washer (2)	S-1165-D	.35
Thide Changeover Fastening Screw Nut (2)	W-138-Q	.10
Cover Screw (2)	N-213-D	.10
Magazine and Bracket Fastening Screw (2)	S-872-D	.20
	S-831-W	.60