

Film-Tech

The information contained in this Adobe Acrobat pdf file is provided at your own risk and good judgment.

These manuals are designed to facilitate the exchange of information related to cinema projection and film handling, with no warranties nor obligations from the authors, for qualified field service engineers.

If you are not a qualified technician, please make no adjustments to anything you may read about in these Adobe manual downloads.

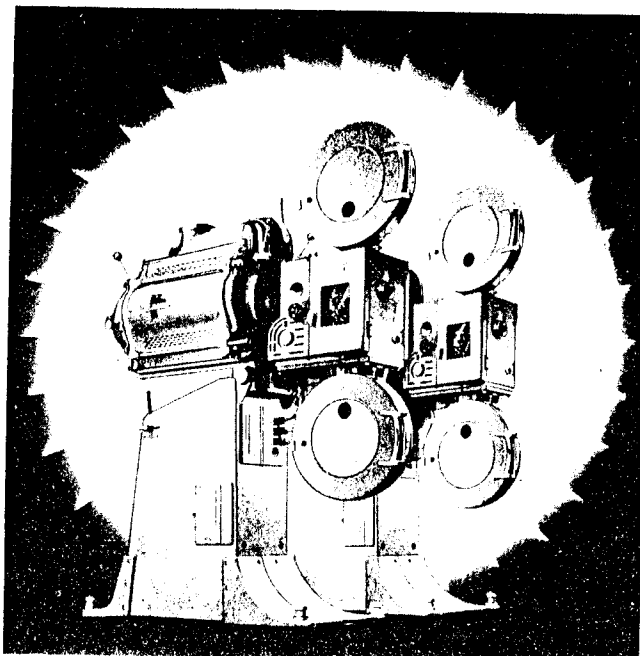
www.film-tech.com

PART B PARTS CATALOG

DeVRY

"12000 SERIES"

35MM MOTION PICTURE SOUND EQUIPMENT



DeVry Corporation

1111 ARMITAGE AVE.

CHICAGO 14, ILL., U.S.A.

Branch Offices: New York -- Hollywood

Distributors in Principal Cities of the World

Important Data Concerning Parts Orders

Careful consideration of this data will facilitate and expedite delivery of parts orders.

* * *

- I. State MODEL and SERIAL number of projector and MODEL and SERIAL number of amplifier.
- II. Furnish PART NUMBER and DESCRIPTION of EACH part required, as given in *this parts catalog*.
 - (a) It is *not* necessary to give the assembly number in which the required part appears.
 - (b) Similarly, it is *not* necessary to itemize all parts comprising a required assembly.
- III. The use of a given set of asterisks after two or more parts on a given page indicates that, for technical or manufacturing reasons, the parts so marked are not sold separately and that all the parts so marked should be purchased.
- IV. In every case the main assembly is listed at the top of each page, and the individual parts and sub-assemblies comprising the assembly appear under the caption, part number.
- V. The analysis of each sub-assembly is indented, following the listing of the sub-assembly.
- VI. Explanation of KIT ASSEMBLY. A Kit Assembly is an assembly composed of loose parts that are not completely assembled into one unit.
- VII. Items associated with but not included in an assembly follow the analysis of the assembly in question. These parts are listed under the caption RELATED ITEMS — Not Furnished With Above Assembly Unless Specified. Order these parts *separately*, if required.
- VIII. Names of all items or parts are listed with the NOUN first, followed by the descriptive ADJECTIVE.

EXAMPLE I

Shoe — Intermittent Sprocket

ORDER PARTS FROM:
EDWARD H. WOLK, INC
921 SOUTH JEFFERSON ST.
CHICAGO, ILL. 60607-4422

1-800-621-4424
(312) 939-2720
FAX: 312-939-0654
www.edwolk.com

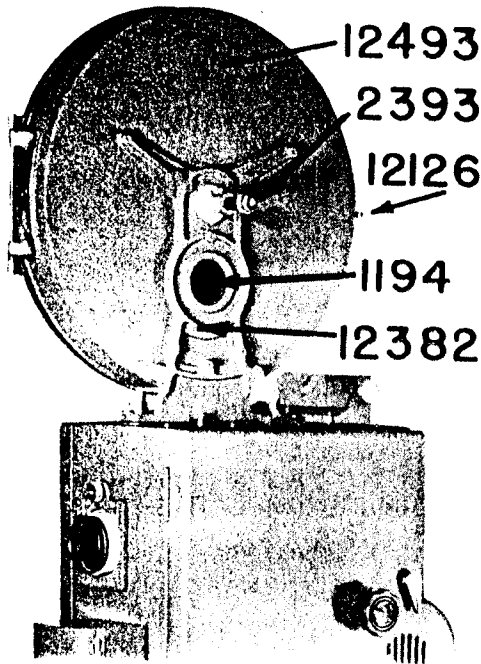
INDEX

PARTS CATALOG

ASSEMBLIES OF EQUIPMENT LISTED IN ORDER IN WHICH THEY APPEAR IN CATALOG

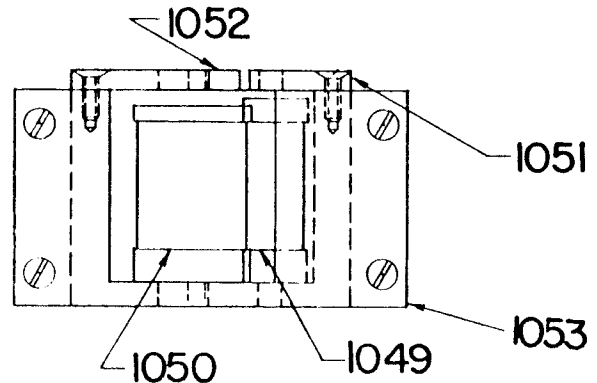
	Page
Feed Magazine Assembly - No. 12046	4A
Feed Shaft Assembly - No. 2393	4A
Lower Magazine Assembly - No. 12051	5A
Take-up Spindle Assembly - No. 2025	5A
Film Gate Assembly - No. 2230	6A, 7A
Film Gate Release Assembly - No. 2421	8A
Film Gate Mounting Assembly - No. 2420	8A
Sound Driving Chain Idler Assembly - No. 2193	8A
Aperture Plate Assembly - No. 3355	9A
Feed Sprocket Assembly - No. 2192	10A
Take-up Sprocket Assembly - No. 12100	11A
Holdback Sprocket Assembly - No. 12189	12A
Lens Focusing Mount Assembly - No. 12160	13A
Exciter Lamp and Slit Lens Assembly - No. 12269	14A
Sound Filter Assembly - No. 12146	14A
Impedance Roller & Mounting Bracket Assembly - No. 12293	15A
Photo Cell Mount Assembly - No. 12268	16A
Framer Shaft Assembly - No. 12277	17A
Intermittent Mount Assembly - No. 12149	17A
Intermittent Assembly - No. 2280	18A
Intermittent Sub-Assemblies	19A, 20A
Chain Synchronizer Assembly - No. 12264	21A
Feed and Intermittent Chain Idler Assembly - No. 2305	22A
Film Idler Roller Assembly - No. 12103	22A
Film Guide Roller Assembly - No. 46	22A
Fixed Chain Idler Assembly - No. 12272	22A
Barrel Shutter Kit Assembly - No. 12570	23A
Drive Motor Assembly - No. 1602	24A
Sound Changeover Assembly - No. 2166	25A
D. C. Exciter Supply Rectifier - No. 1848	26A
Projector Base Assembly - No. 12599	27A
Amplifier Assembly (Reference)	28A
Pre-Amplifier Assembly (Reference)	28A
Monitor Speaker Assembly (Reference)	28A
Equalizer Panel (Reference)	28A
Electrical Box Assembly - No. 12172	29A
Switch Control Box Assembly - No. 12190	29A
Chains Used in "12000 Series" Projector	30A
Assembly Identifications	31A

Feed Magazine Assembly - Part No. 12046

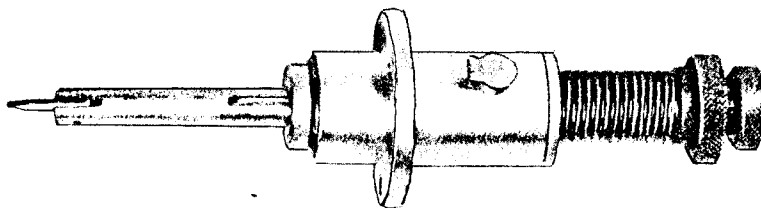


- 1194 Glass, door
- 1261 Hinge, door
- 1262 Hinge, case
- 1334 Bracket, door latch
- 2393 Feed Spindle Assembly (See Parts List Below)
- 12126 Door Latch Assembly (Consisting of No. 1327 Latch Bracket, No. 1329 Door Latch, No. 1330 Door Latch Pin and No. 1333 Door Latch Spring).
- 12382 Bracket, feed magazine
- 12493 Case, feed magazine

- 1049 Roller, mag. fire (small)
- 1050 Roller, mag. fire (large)
- 1051 Plate, mag. fire (small)
- 1052 Plate, mag. fire (large)
- 1053 Casting, mag. fire roller

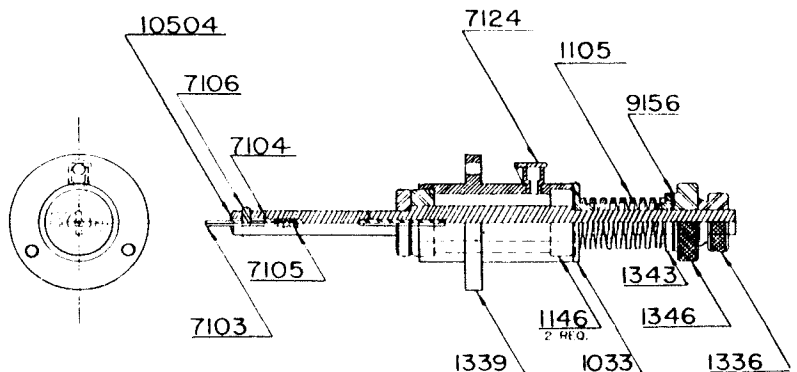


Feed Shaft Assembly - Part No. 2393

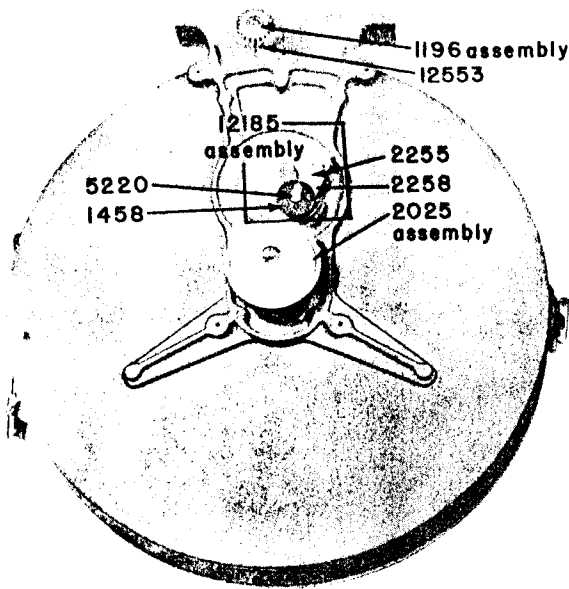


- 1033 Flange, large spring
- 1105 Spring, tension
- 1146 Bearing, ball
- 1336 Nut, tension lock
- 1339 Housing, ball bearing
- 1343 Flange, small spring

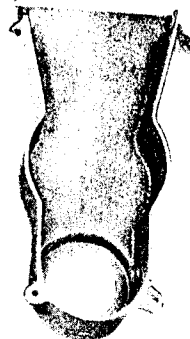
- 1346 Nut, tension adjustment
- 7103 Lock, reel
- 7104 Plunger, reel lock
- 7105 Spring, reel lock
- 7106 Pin, reel lock
- 7124 Cup, oil
- 9156 Washer, fiber
- 10504 Feed Shaft Collar Assembly



Lower Magazine Assembly – Part No. 12051



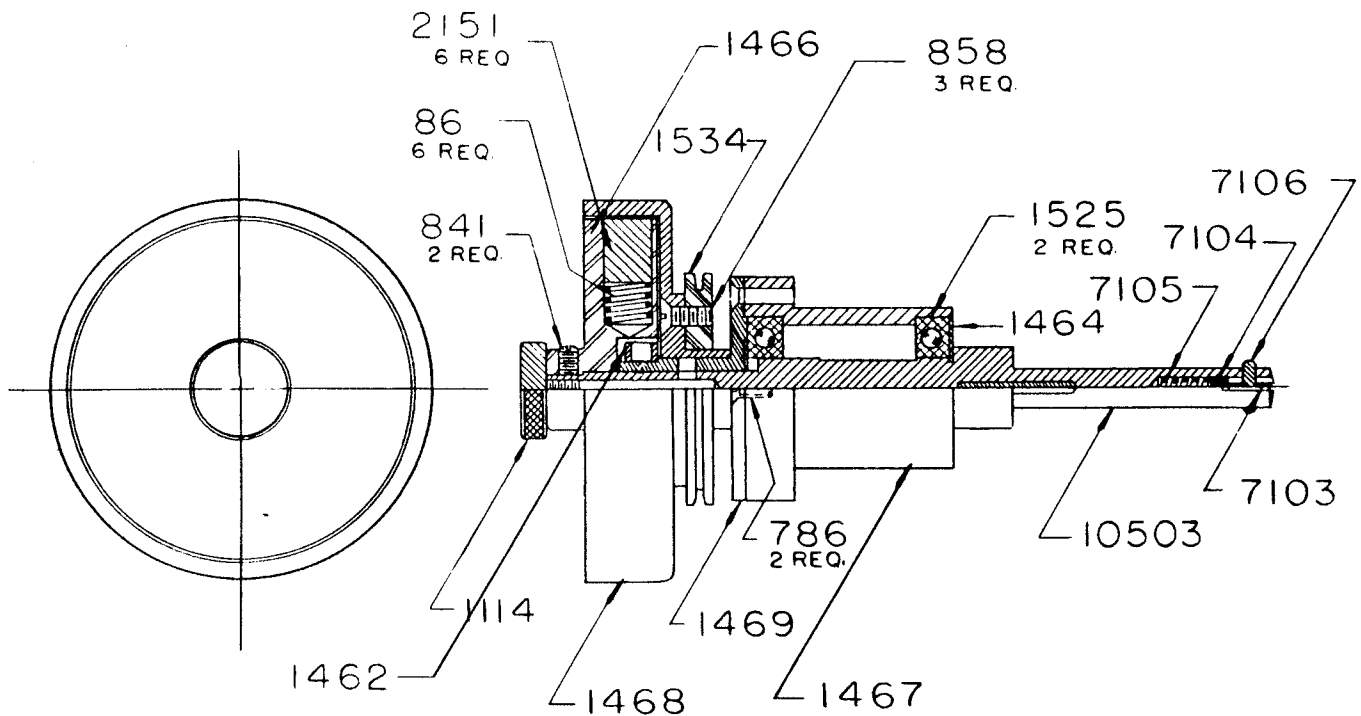
- 1194 Glass, door
- 1196 Take-up chain idler Assembly
- 2303 Sprocket
- 2304 Bearing
- 1261 Hinge, door
- 1262 Hinge, case
- 1334 Catch, door latch
- 2025 Take-up spindle Assembly
(See Parts Breakdown Below)



12384

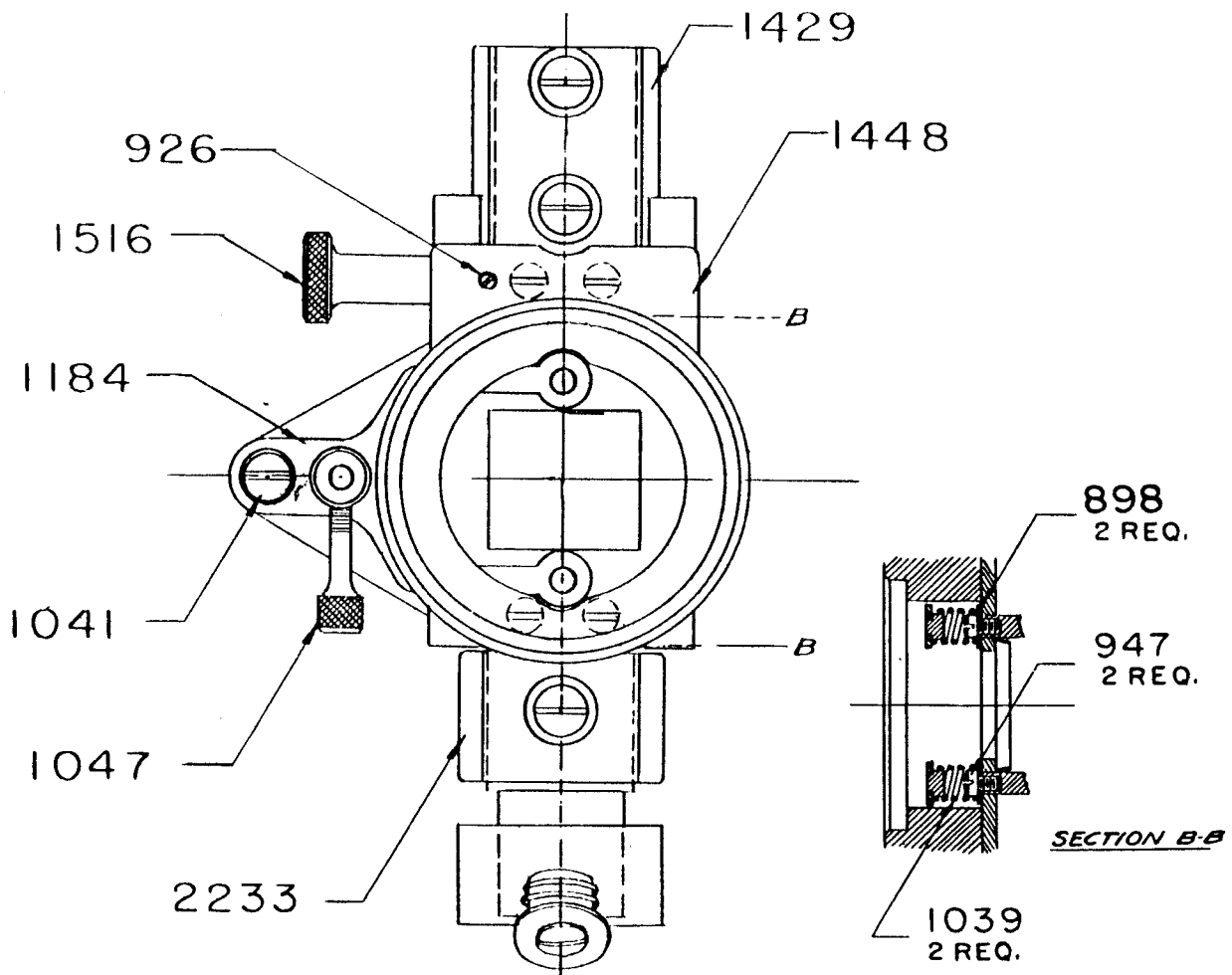
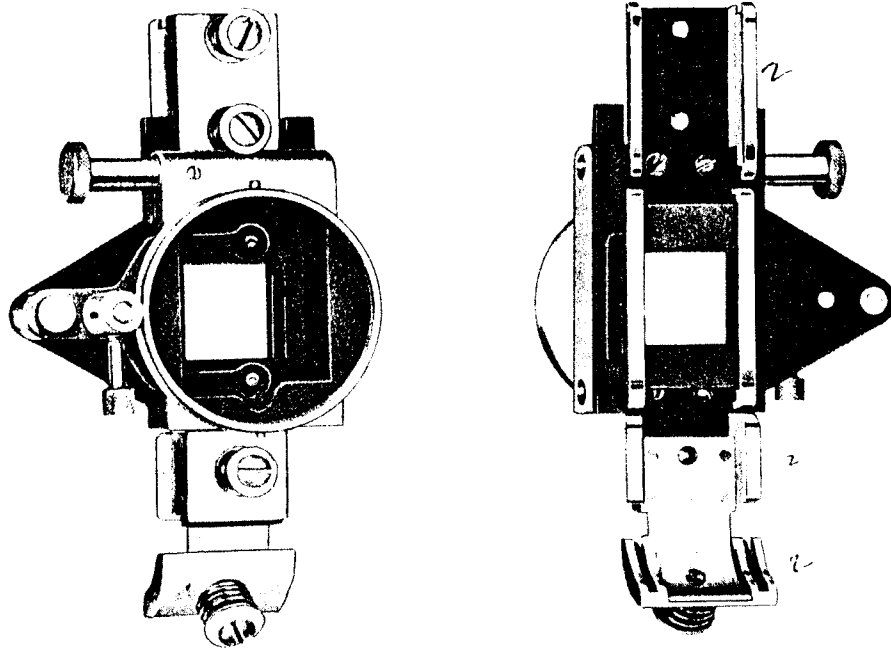
- 12126 Door Latch Assembly
- 1327 Bracket
- 1329 Latch
- 1330 Pin
- 1333 Latch Spring
- 12185 Chain Idler Assembly
- 1458 Roller, micarta
- 2258 Lever Assembly
- 5220 Screw, binder head
- 12383 Bracket, magazine
- 12384 Guard, chain take-up reel
- 12472 Case, magazine
- 12492 Door, magazine
- 12553 Stud, chain idler

Take-Up Spindle Assembly - Part No. 2025



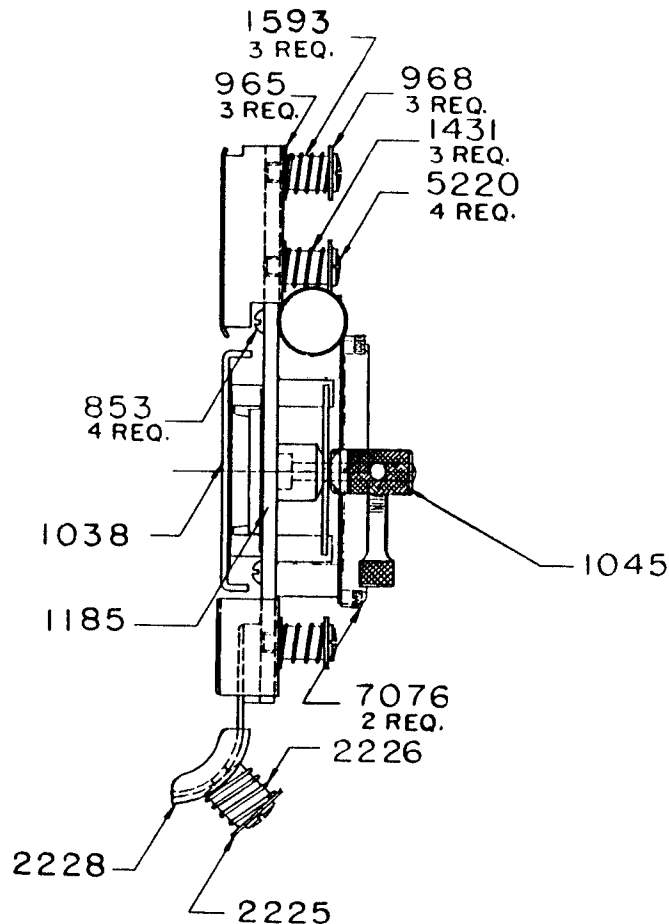
- 86 Spring, friction
- 1114 Screw, knurled
- 1462 Collar, thimble
- 1464 Cover, ball
- 1466 Wheel, friction plunger
- 1467 Housing, friction
- 1468 Cylinder, friction take-up
- 1469 Sleeve, take-up bearing
- 1525 Bearing, ball (S-5-R)
- 1534 Sprocket, 30 tooth chain
- 2151 Tips, rawhide friction
- 2429 Adapter, take-up bearing
- 7103 Clip, reel
- 7104 Plunger, reel clip
- 7105 Spring, reel clip
- 7106 Pin, reel lock pivot
- 9175 Screw, Allen Head cup point
- 10503 Take-up Reel Shaft Assembly

Film Gate Assembly - Part No. 2230

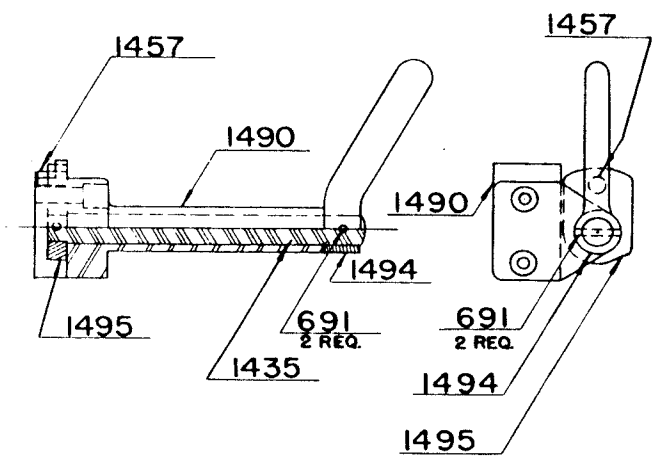
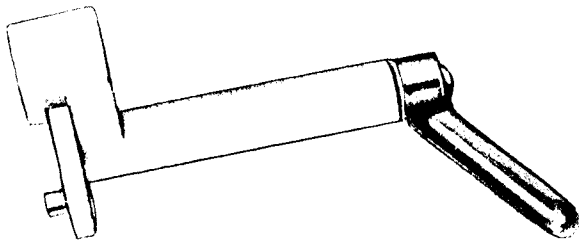


Film Gate Assembly - Part No. 2230

853	Screw, 5-40 X 1/4" Rd. Hd.	1185	Film Gate Mt. Pl. Assembly
898	Washer, main shoe retaining	1429	Shoe, upper film
926	Screw, 2-56 X 1/8" Fil. Hd.	1431	Spring, film shoe
947	Screw, 5-40 X 3/16" Fil. Hd.	1448	Bracket, film gate
965	Washer, film shoe (inner)	1516	Screw, film gate lock
968	Washer, film shoe (outer)	1593	Stud, film shoe
1038	Aperture Shoe Assembly	2225	Washer, sprocket shoe
1039	Spring, aperture shoe	2226	Spring, sprocket shoe
1041	Screw, yoke retaining	2228	Shoe, intermittent sprocket
1045	Nut, tension adjustment	2233	Shoe, lower film
1047	Screw, tension lock	5220	Screw, Binder Head
1184	Tension Yoke Assembly	7076	Screw, knurled tube



Film Gate Release Assembly - Part No. 2421

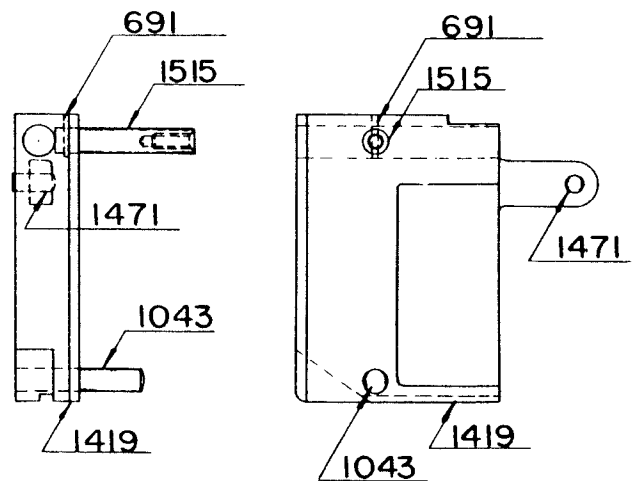
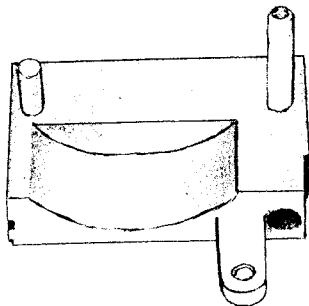


- 691 Pin, taper
- 1435 Shaft, release
- 1457 Stud, cam release
- 1490 Bearing, release shaft
- 1494 Handle, release
- 1495 Cam, release

RELATED ITEM 1472 Arm, release pivot

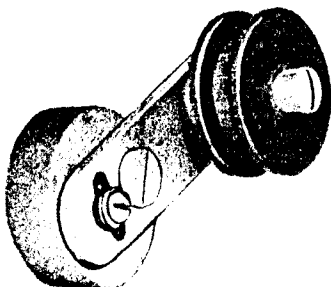
Not included in 2421 Assembly.
Purchase 1472 separately.

Film Gate Mounting Assembly - Part No. 2420

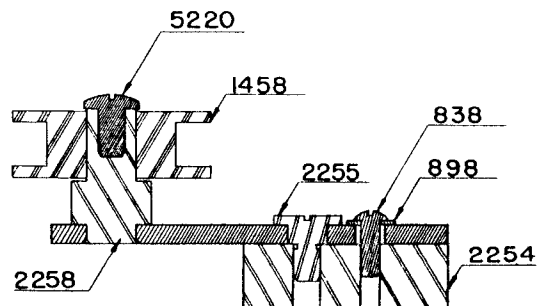


- 691 Pin, taper
- 1043 Stud, film gate mounting
- 1419 Bracket, sliding
- 1471 Stud, sliding bracket
- 1515 Stud, film gate mounting

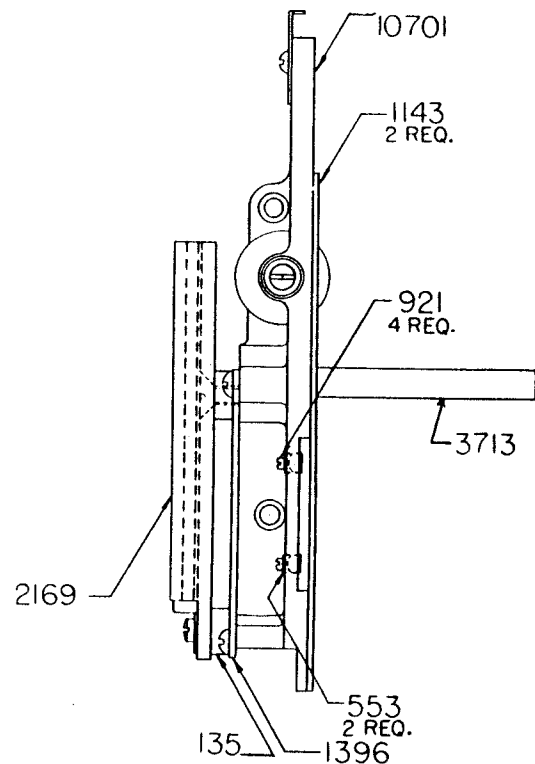
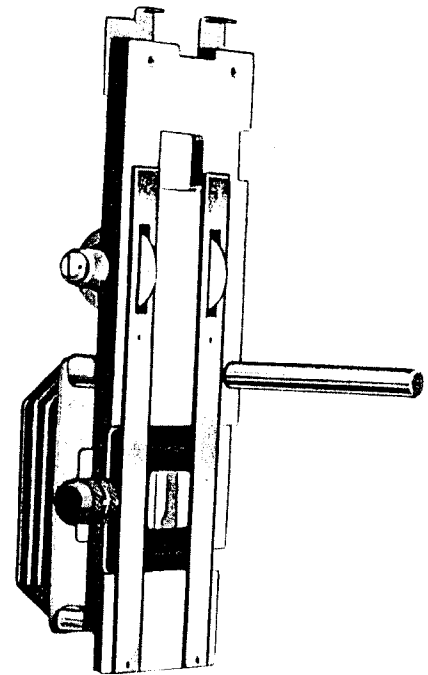
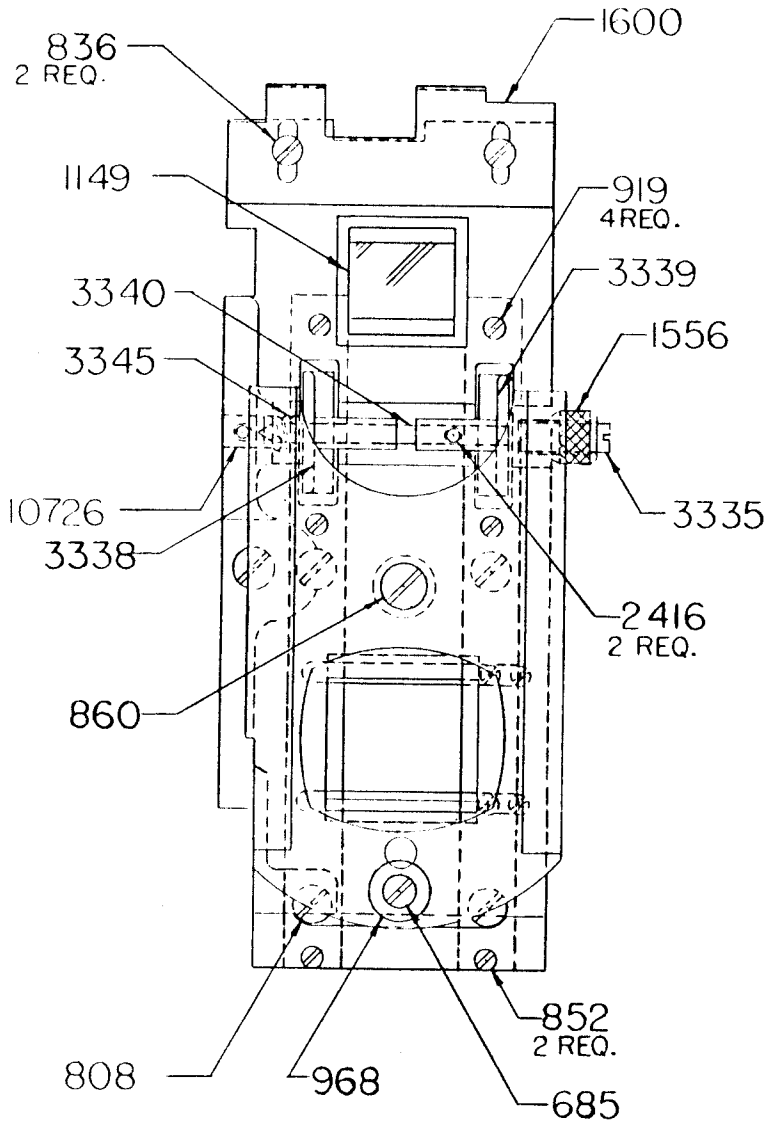
Sound Driving Chain Idler Assembly - Part No. 2193



- 838 Screw, 5-40 X 3/8" R.H.
- 898 Washer, plain
- 1458 Roller, chain idler
- 2254 Block, idler mounting
- 2255 Screw, shoulder
- 2258 Lever Assembly
- 5220 Screw, binder head



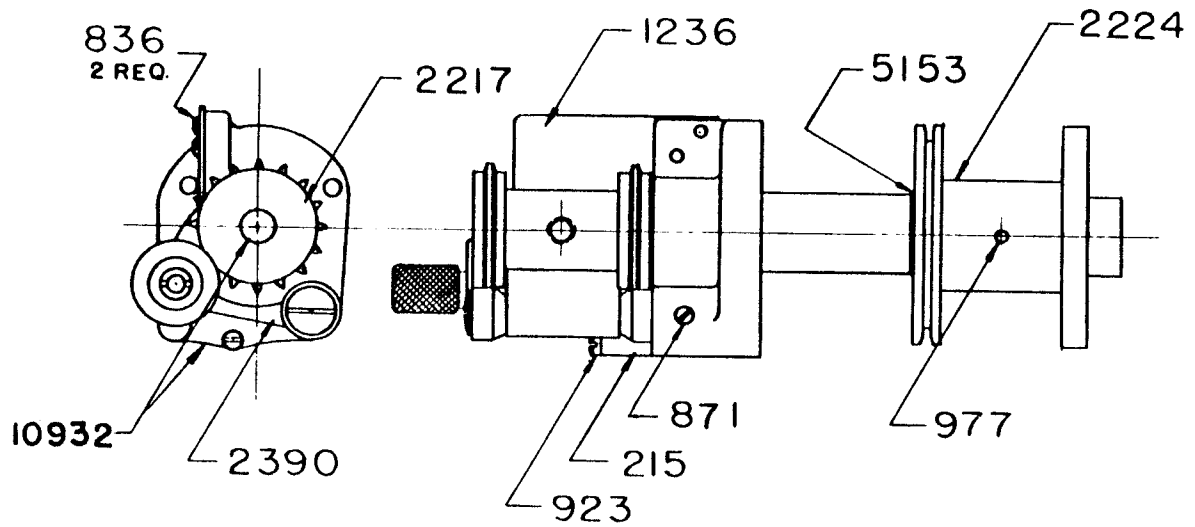
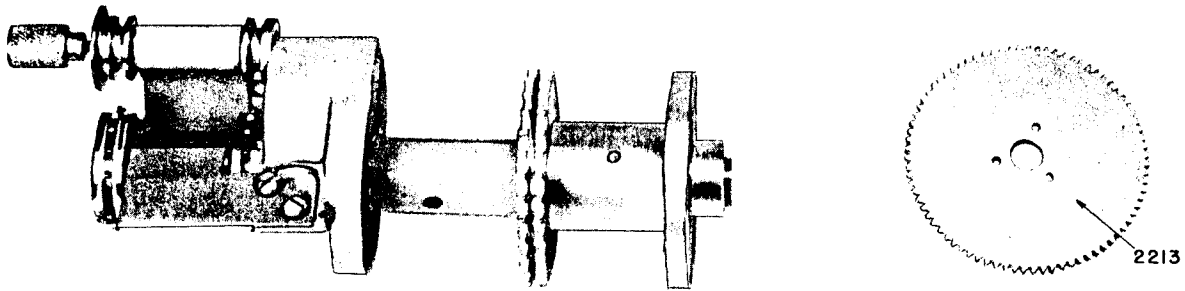
Aperture Plate Assembly - Part No. 3355



- 135 Spacers, Reel Take-up
- 553 Spring
- 685 Screw, 8-32 X 1/2" Rd. Hd.
- 808 Screw, 6-32 X 1/4" Rd. Hd.
- 836 Screw, 5-40 X 3/16" Rd. Hd.
- 852 Screw, 2-56 X 1/8" Flat Head
- 860 Screw, 8-32 X 1/2" Flat Head
- 919 Screw, 2-56 X 5/16" Flat Head
- 921 Screw, 2-56 X 1/8" Fil. Hd.
- 968 Washer, 1/2" O. 1/4 5/32" I.S.
- 1143 Rail, Aperture Film
- 1149 Glass, Picture Framing
- 1396 Plate, Baffle Mounting
- 1556 Nut, Aperture Roller Adj.
- 1600 Guard, Aperture Fire
- 2169 Slide, Changeover Cut-off
- 2249 Plate, sound aperture
- 2416 Screw, 5-40 X 1/8" Bristo Set
- 3335 Screw, Side Tension Adj.
- 3338 Roller, Plain Side Tension

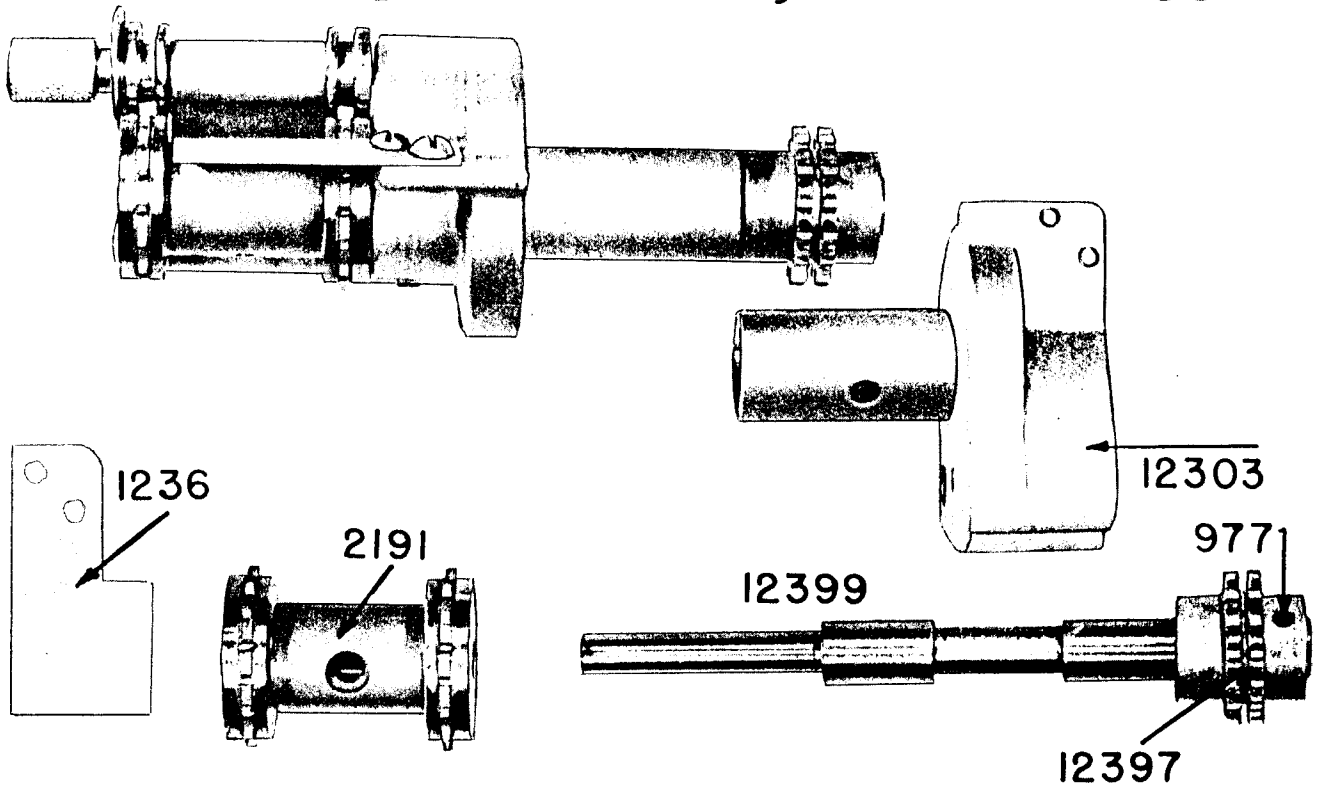
- 3339 Roller, Tapped Side Tension
- 3340 Shaft, Side Tension Roller
- 3345 Spring, Side Tension Roller
- 3713 Rod, Film Gate Slide
- 5220 Screw, 8-32 X 5/16" Binder Hd.
- 10701 Casting, Aperture
- 10726 Center, Side Tension
- 10825 Guard, Baffle Mounting Plate

Feed Sprocket Assembly - Part No. 2192



215	Spacer, idler arm stop	2390	Sprocket Idler Assembly
836	Screw, 5-40 X 3/16" Rd. Hd.	Consisting of the following parts	
871	Screw, 10-32 allen set	1348	Spring, idler lock
923	Screw, 2-56 X 5/8" Fil. Hd.	1349	Screw, retaining
977	Pin, large taper	1354	Knob, idler
1236	Plate, stripper	1355	Nut, idler lock
2217	Sprocket, film feed	1356	Rod, idler lock
2224	Feed chain sprocket assembly	1358	Roller, inner idler
5153	Washer, fiber	1359	Roller, outer idler
10932	Shaft & Bearing Kit Assembly (Consisting of 2212 Sprocket Shaft and 2218 Sprocket Bearing)	1511	Roller, fixed idler
		5183	Stud, idler
		5222	Screw, binder head
		10931	Idler bracket assembly
		RELATED ITEMS	
		2213	Sprocket, feed chain

Take-Up Sprocket Assembly - Part No. 12100



977 Pin, taper

1236 Plate, stripper

2191 Sprocket, take-up

2390 Take-up Idler Assembly

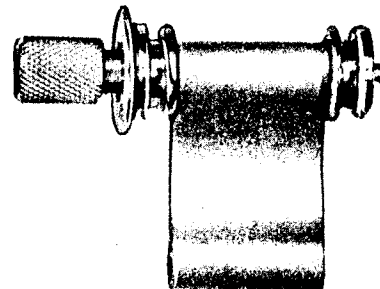
(See Parts Breakdown at right)

12303 Sprocket Bearing Assembly

12397 Sprocket, take-up chain

12399 Shaft, take-up sprocket

TAKE-UP IDLER ASSEMBLY PART NUMBER 2390



1348 Spring, idler lock

1349 Screw, roller retaining

1354 Knob, idler

1355 Nut, idler lock

1356 Pin, idler lock

1358 Idler, bottom idler

1359 Idler, top idler

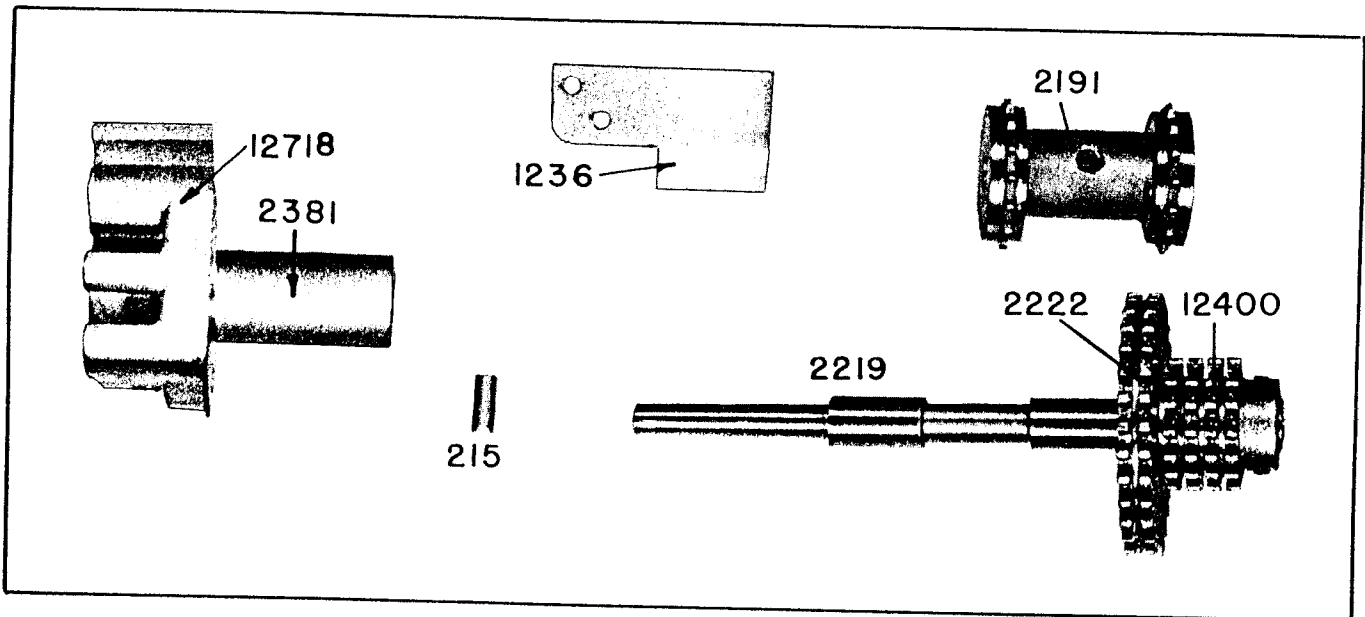
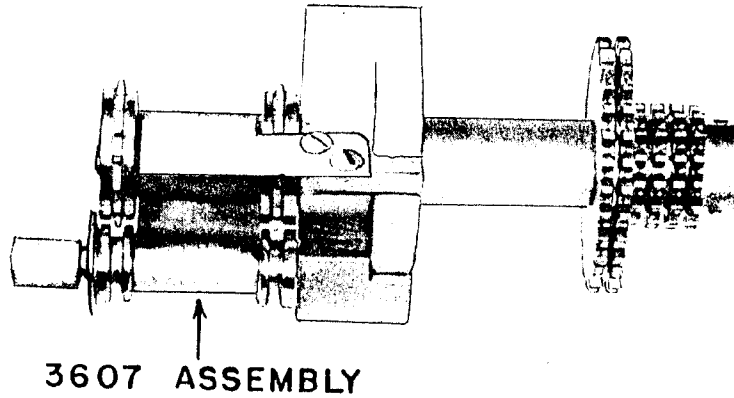
1511 Roller, idler

5183 Stud, idler

5222 Screw, 5-40 Binder Hd.

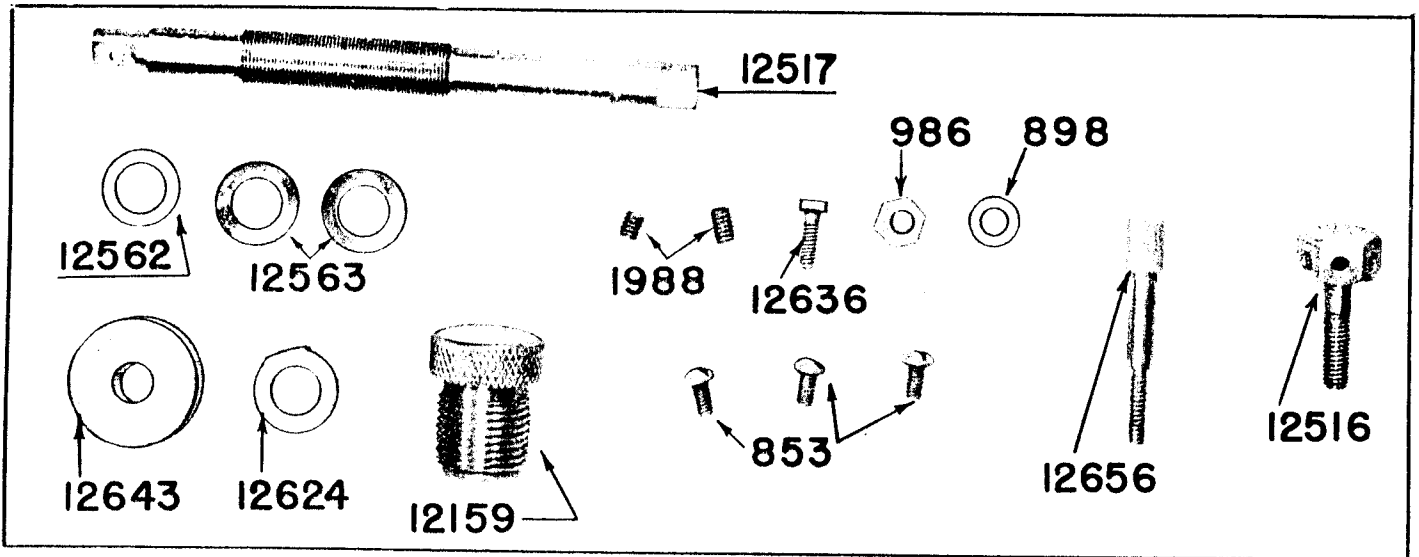
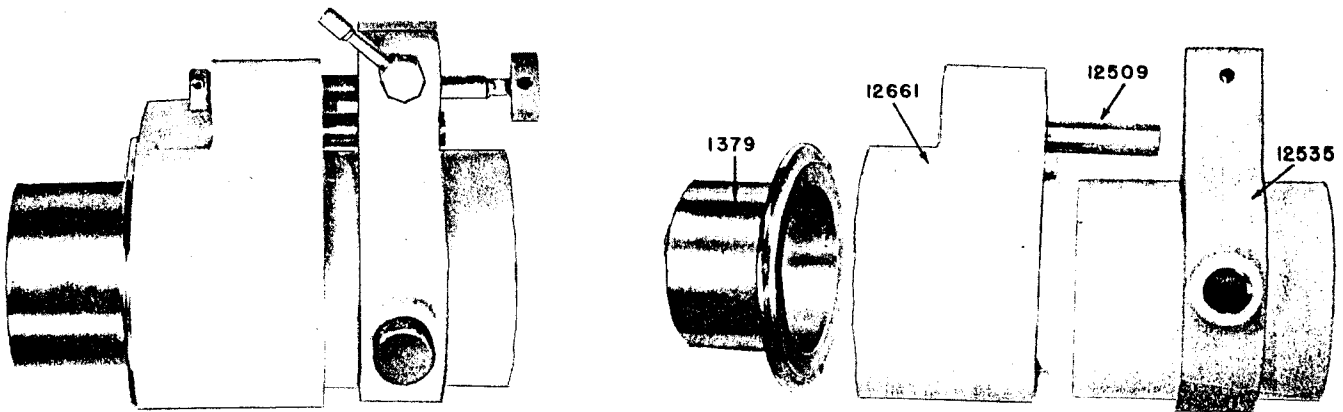
10931 Idler Bracket Assembly

Holdback Sprocket Assembly - Part No. 12189



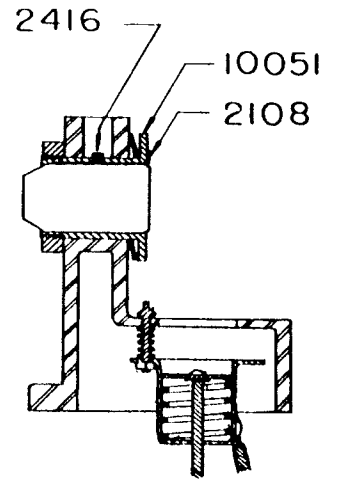
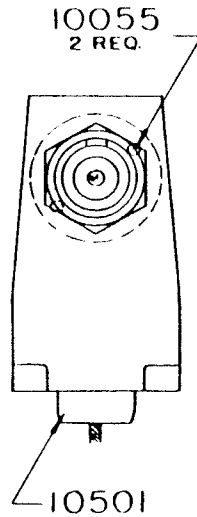
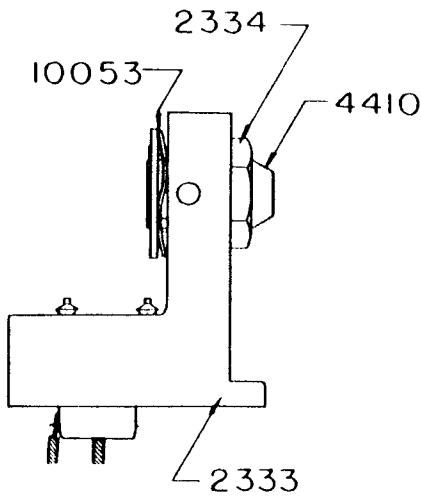
- | | | | |
|-------|---|----------|-------------------------|
| 215 | Spacer, idler | NO. 3607 | FILM IDLER ASSEMBLY |
| 1236 | Plate, stripper | 1348 | Spring, idler lock |
| 2191 | Sprocket, film sound | 1349 | Screw, roller retaining |
| 2219 | Shaft, holdback sprocket | 1354 | Knob, idler |
| 2381 | Holdback Sprocket Bearing Assembly | 1355 | Nut, idler lock |
| 3607 | Film Idler Assembly
(See Parts Breakdown at right) | 1356 | Pin, idler lock |
| 12128 | Holdback Sprocket Assembly | 1358 | Roller, bottom idler |
| | 2222 Sprocket, holdback | 1359 | Roller, top idler |
| | 12400 Sprocket, take-up | 1511 | Roller, idler |
| 12718 | Stop, sprocket idler block | 5183 | Stud, idler |
| | | 5222 | Screw, special 5-40 |
| | | 10931 | Idler Bracket Assembly |

Lens Focusing Mount Assembly -- Part No. 12160

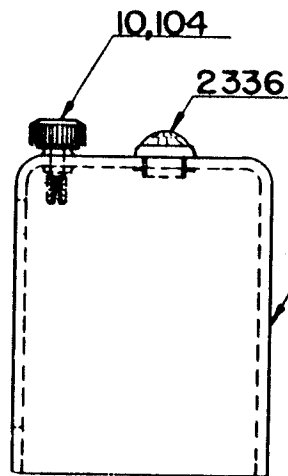


853	Screw, 5-40 X 1/4" Rd. Hd.	12517	Screw, lens mount focusing
898	Washer, steel	12535	Sleeve, lens focusing
986	Nut, 5-40 hexagonal	12562	Washer, focusing screw thrust
1379	Flange, bracket	12563	Washer, spring
1988	Screw, 8-32 X 1/4" Allen Set	12624	Collar, focusing screw thrust
12159	Lens Lock Assembly	12636	Key, lens focusing mount
12509	Rod, lens mount support	12643	Knob, lens mount focusing
12516	Screw, focusing lock	12656	Lever, focusing screw thrust
		12661	Mount, lens sleeve

Exciter Lamp and Slit Lens Assembly Part No. 12269



- 2108 Spring, slit lens friction
- 2333 Bracket, exciter lamp
- 2334 Nut, slit lens
- 2337 Spring, lamp socket
- 2338 Pin, lamp socket
- 2339 Spring, pin
- 2342 Shell, socket
- 2416 Screw, Bristol set
- 4410 Lens, slit (sound)
- 10051 Sleeve, slit lens
- 10053 Washer, slit lens spring
- 10055 Pin, guide



RELATED ITEMS

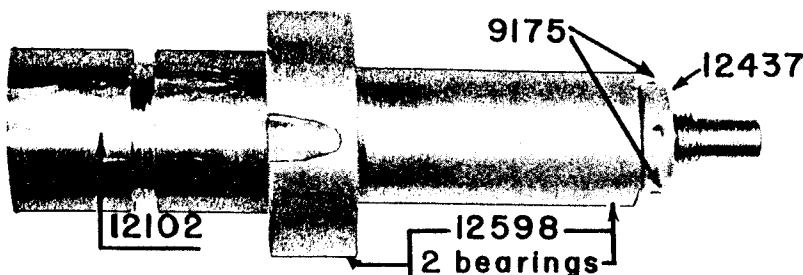
Exciter Lamp
No. 399

1 Ampere, 6 Volt

- 2335 Cover, exciter lamp
- 2336 Ruby, glass
- 10104 Screw, knurled cover

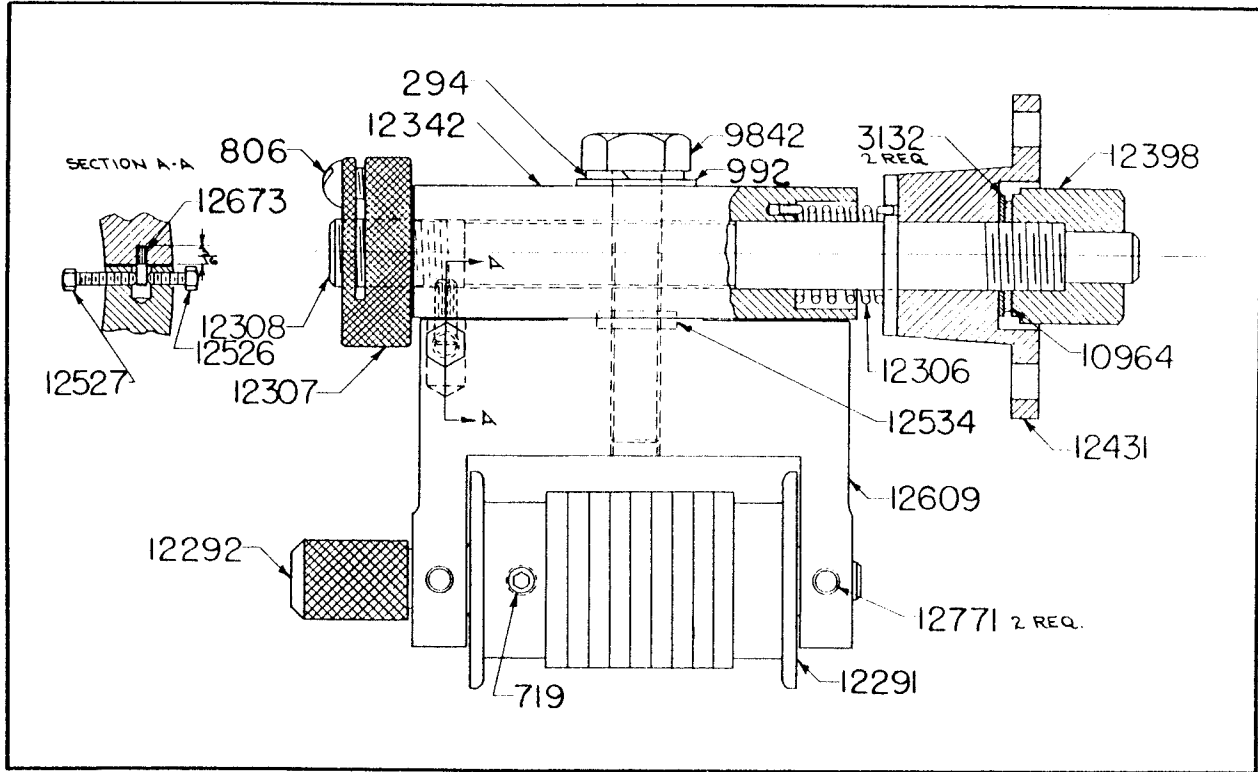
Parts 399, 2335, 2336, 10104 are not included in 12269 assembly. Order these parts separately.

Sound Filter Assembly - Part No. 12146



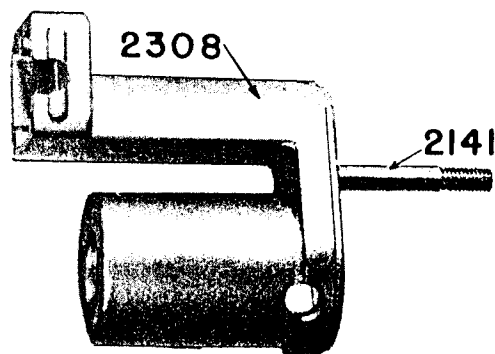
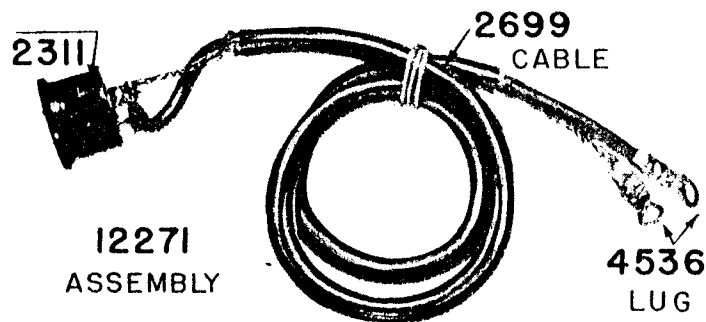
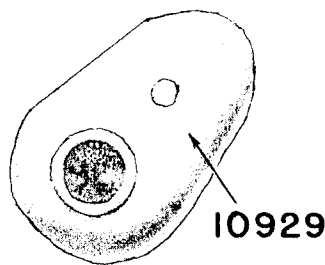
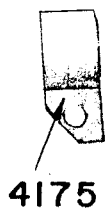
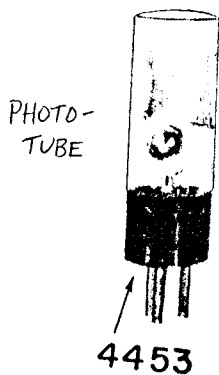
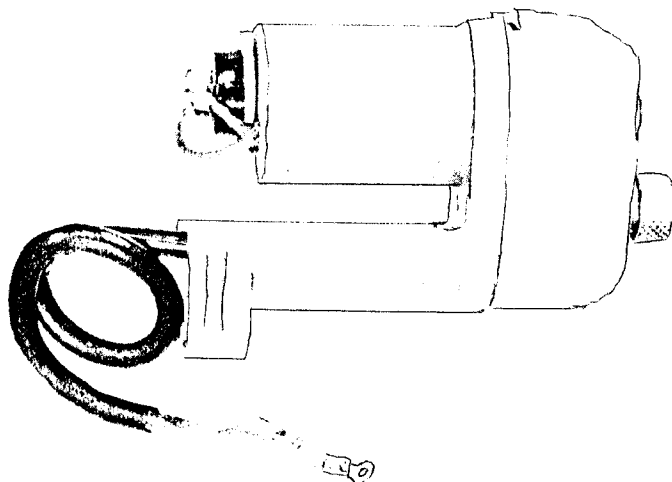
- 9175 Screw, Allen Head
- 10119 Mount, flywheel bearing
- 12102 Sound Drum & Shaft Assembly
- 977 Pin, taper
- 12310 Drum, sound
- 12311 Shaft, sound drum
- 12437 Collar, sound mechanism
- 12598 Bearing, ball (2 - not shown)

Impedance Roller and Mounting Bracket Assembly Part No. 12293



294	Washer, 1/4" split lock	12306	Spring, impedance roller
719	Screw, 6-32 X 1/4" set	12307	Nut, impedance roller adjustment
806	Screw, 6-32 C 5/16" R.H.	12308	Shaft, impedance roller mounting
992	Washer, 1/4" I.D. 5/8" O.D. .035	12342	Bracket, impedance roller mounting
3132	Washer, 5/16" I.D. 5/8" O.D. .065	12398	Nut, adjustment
9842	Bolt, 1/4"-20 X 1 1/4" hexagonal	12431	Stud, impedance roller
10964	Washer, 5/16" I.C. lock	12526	Screw, upper
12291	Impedance Roller Assembly	12527	Screw, lower
12651	Felt lamination	12534	Sleeve
12709	Ring, impedance roller	12609	Bracket, impedance roller
12710	Roller, impedance (front)	12673	Pin, dowel
12711	Roller, impedance (rear)	12771	Felt, impedance roller
12292	Impedance Roller Shaft Assembly		
12645	Knob, impedance roller		
12715	Shaft, impedance roller		

Photo Cell Mount Assembly - Part No. 12268



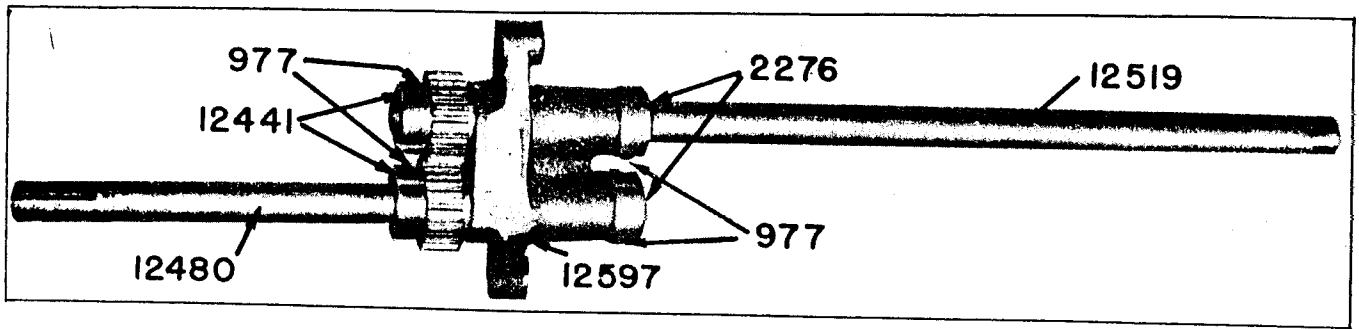
RELATED ITEMS

- 2141 Stud, photo cell cover
- 2308 Bracket, photo cell
- 2311 Socket, photo cell
- 12271 P.E. Cable and Lug Assembly
- 2699 Cable, 15" P.E.
- 4536 Lug

- 2140 Nut, photo cell cover
- 4175 Cleat, fiber
- 4453 Cell, photo electric RCA 927 or 5583
- 10929 Cover, photo cell

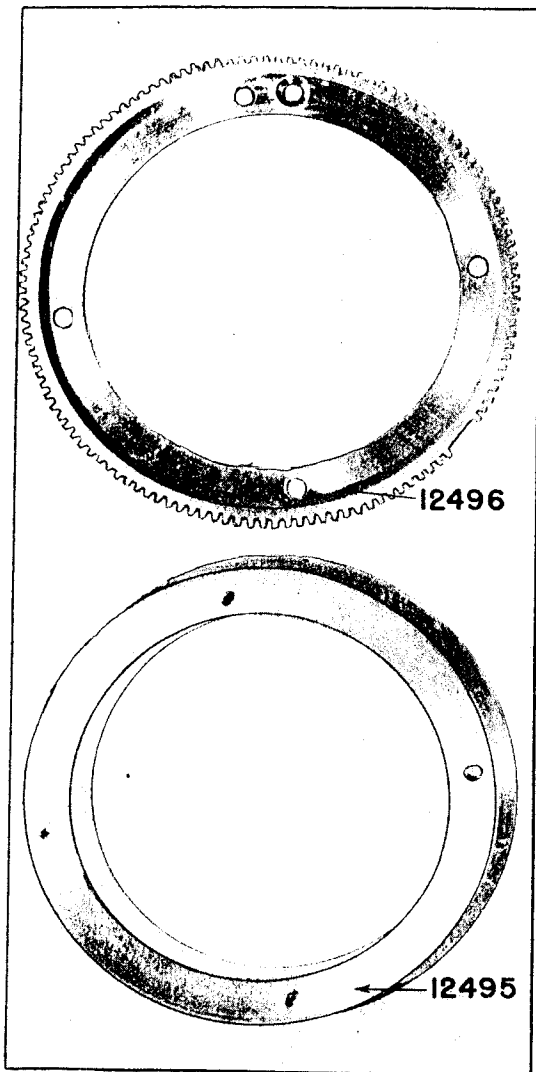
Parts 2140, 4175, 4453 and 10929 are not included in 12268 Assembly. Purchase these parts separately.

Framer Shaft Assembly Part No. 12277



- | | | | |
|-------|-----------------------------------|-------|-------------------------------------|
| 977 | Pin, taper | 12597 | Bearing, intermittent framing shaft |
| 2276 | Collar, intermittent framer shaft | 12441 | Gear, framer shaft |
| 12519 | Shaft, front intermittent framer | 12480 | Shaft, rear intermittent framer |

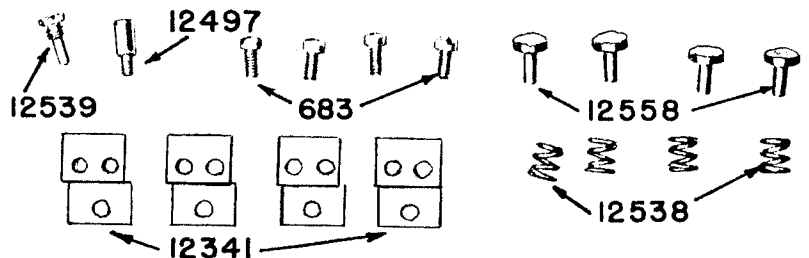
Intermittent Mount Assembly - Part No. 12149



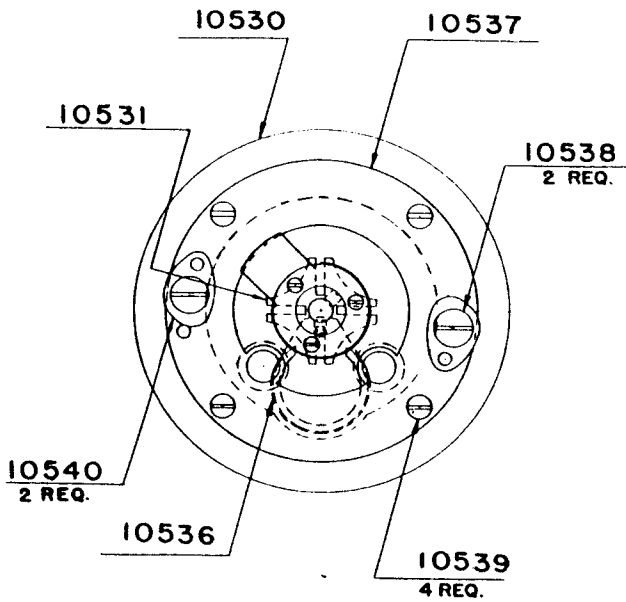
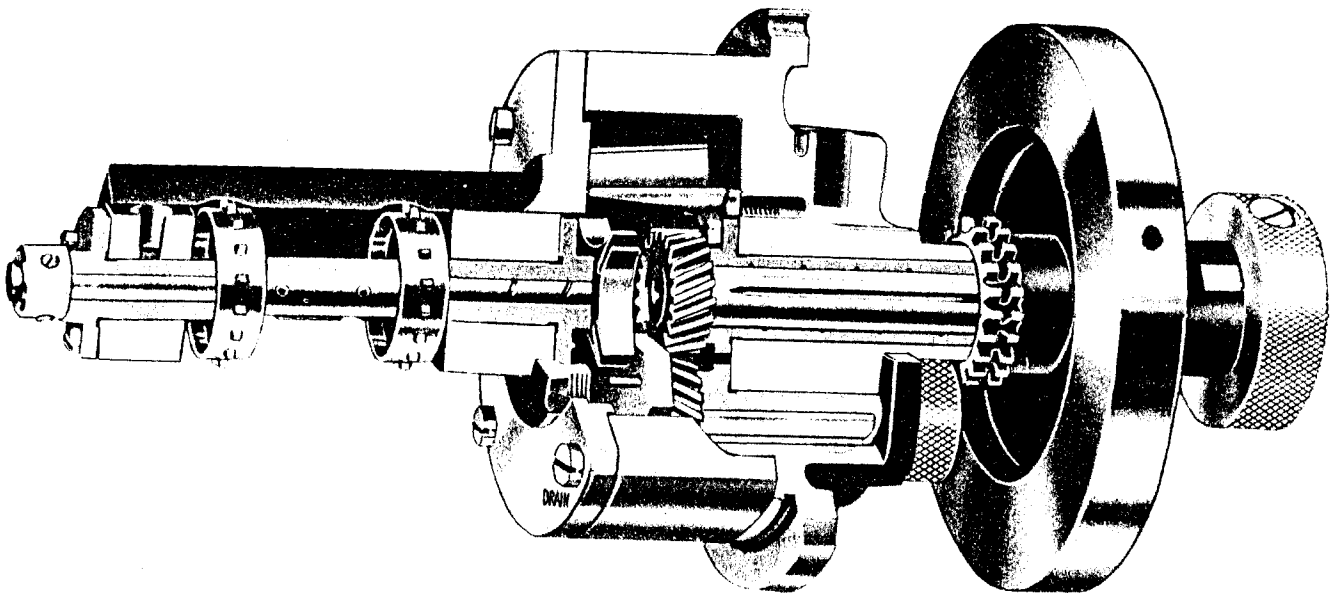
- | | |
|-------|-------------------------------|
| 683 | Screw, 5-40 X 1/4" fil. hd. |
| 12495 | Flange, intermittent mounting |
| 12496 | Gear, intermittent framing |
| 12497 | Stud, framer stop |
| 12539 | Pin, intermittent locating |

RELATED ITEMS

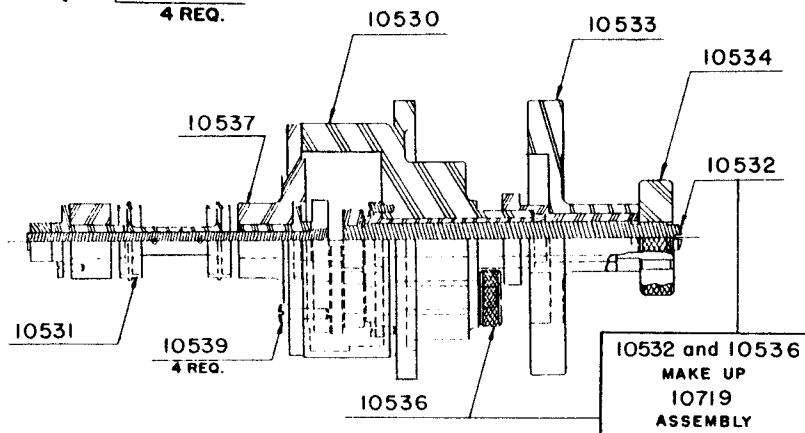
- | | |
|-------|-------------------------------|
| 12341 | Bracket, intermittent tension |
| 12538 | Spring, intermittent tension |
| 12558 | Pad, intermittent tension |



Intermittent Assembly - Part No. 2280



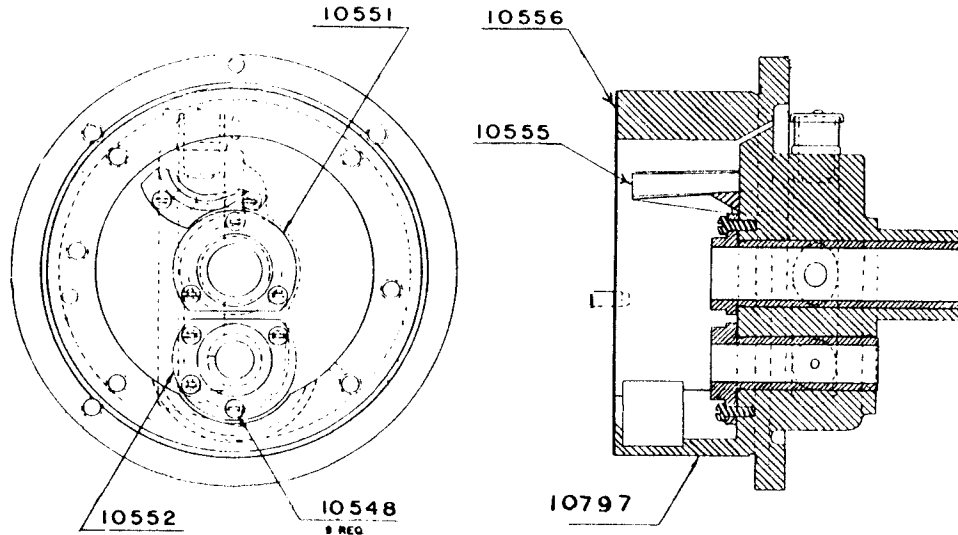
- 10530 Intermittent Case Assembly
- 10531 Star and Sprocket Assembly
- 10532 Flywheel Shaft & Gear Assembly
- 10533 Flywheel & Sprocket Assembly
- 10534 Flywheel Lock Nut Assembly
- 10536 Intermittent Cam Assembly
- 10537 Intermittent Arm & Cover Assembly
- 10538 Screw, 8-32 X 9/16" Binder Hd.
- 10539 Screw, 8-32 X 1/2" Fil. Hd.
- 10540 Clamp, retaining
- 10779 Flywheel Gear & Cam Kit Assembly



SEE NEXT PAGE
for parts breakdown of
Intermittent Assemblies

Intermittent Sub-Assemblies

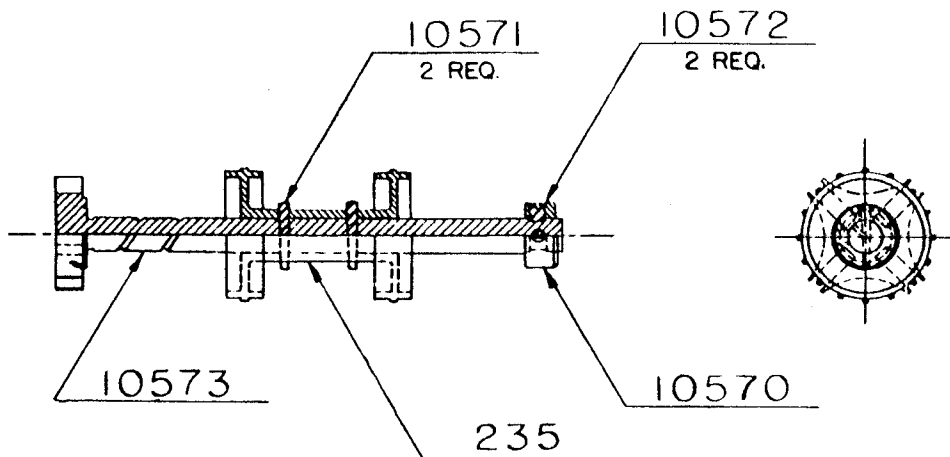
Intermittent Case Sub-Assembly — Part No. 10530



10547	*Pin, pivot	10553	*Cup, oil
10548	Screw, 4-40 X 1/4" Fil. Hd.	10555	Deflector, oil
10551	Bearing, flywheel shaft	10556	Gasket, oil
10552	Bearing, cam shaft	10797	*Case, intermittent

* Not Sold Separately, Purchase 10547, 10533 and 10797.

Star and Sprocket Sub-Assembly — Part No. 10531

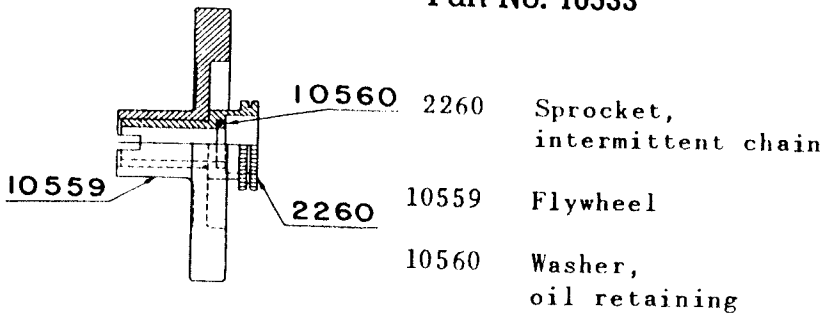


235	Sprocket, intermittent film
10570	Collar, star shaft
10571	Pin, intermittent sprocket
10572	Screw, collar set
10573	Star and shaft

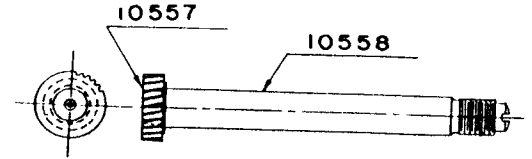
Intermittent Sub-Assemblies - Part No. 2280

Flywheel and Sprocket Sub-Assembly —

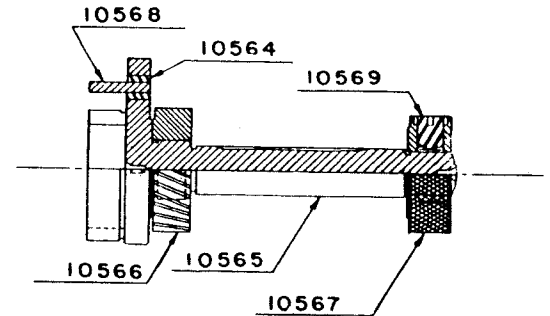
Part No. 10533



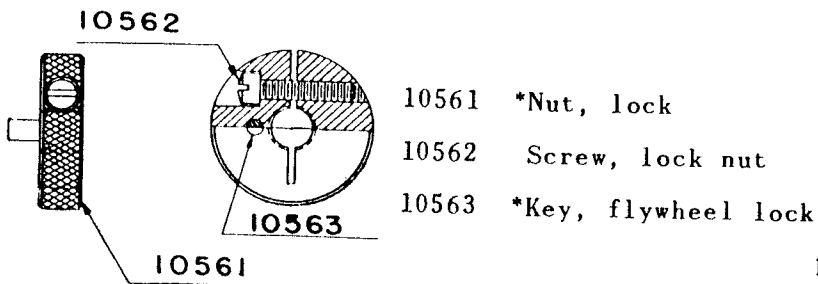
Flywheel Gear — Intermittent Cam Kit Assembly Part No. 10779



Flywheel Shaft and Gear Sub-Assembly Part No. 10532



Flywheel Lock Nut Sub-Assembly — Part No. 10534

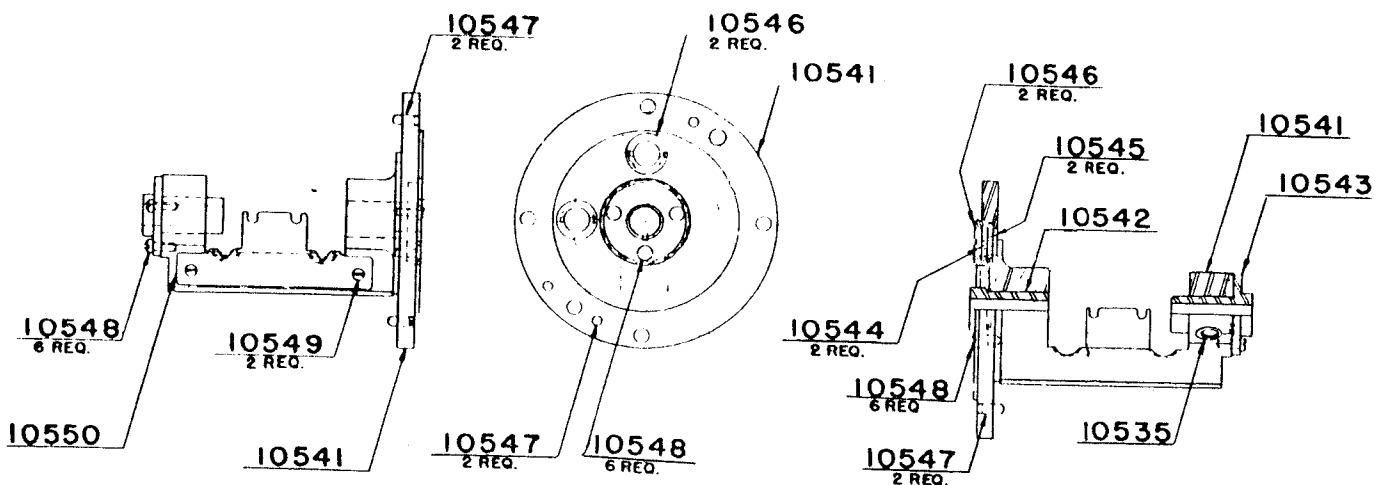


Intermittent Cam Sub-Assembly — Part No. 10536

* Not sold separately.
Purchase Entire Assembly.

Note! Individual parts not sold separately. Purchase entire 10779 Kit Assembly.

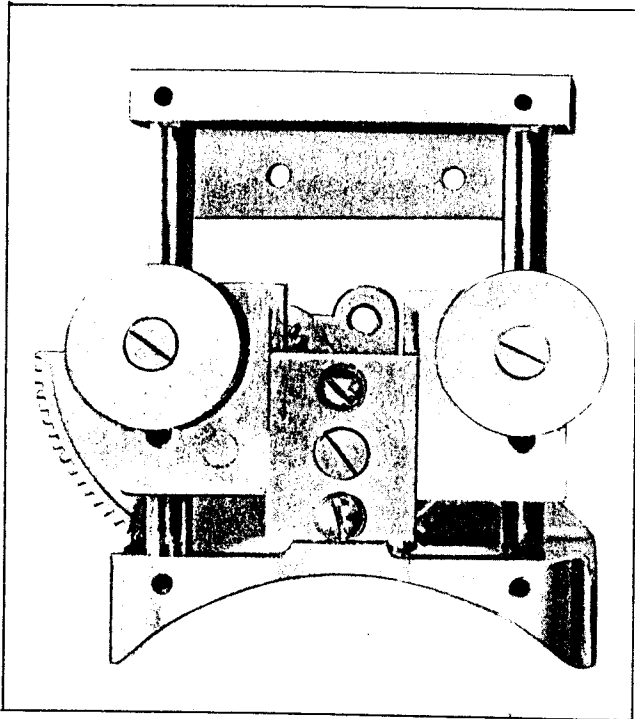
Intermittent Arm and Cover Sub-Assembly — Part No. 10537



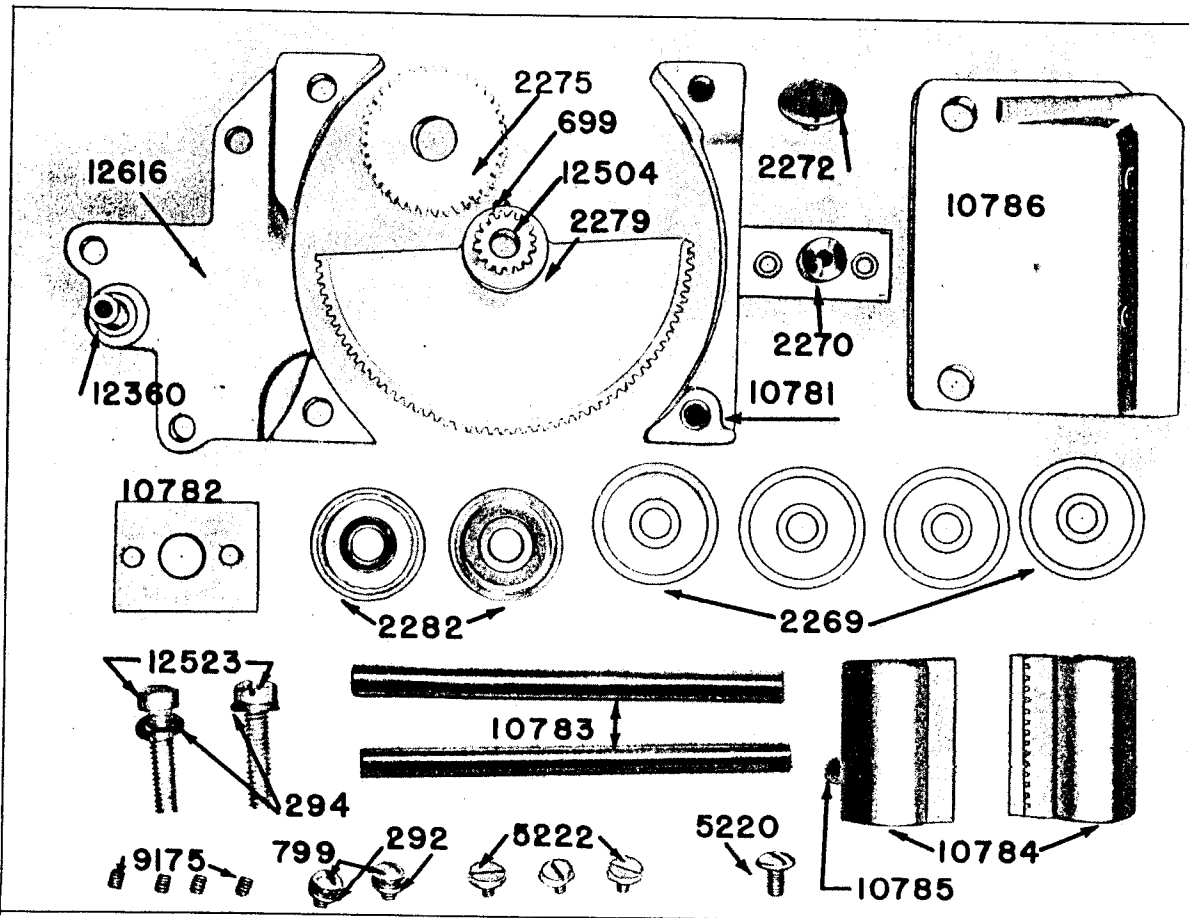
- 10535 Oil Cup Bearing Sub-Assembly
- 10541 Cover, case and bearing arm
- 10542 Bearing, inner star
- 10543 Bearing, outer star
- 10544 Gasket, oil glass

- 10545 Glass, oil
- 10546 Nut, oil glass
- 10547 Pin, pivot
- 10548 Screw, 4-40 X 1/4" Fil. Hd.
- 10549 Screw, 3-38 X 3/16" Fil. Hd.
- 10550 Stripper, film

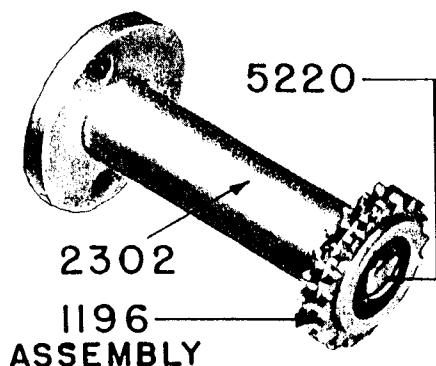
Chain Synchronizer Assembly - Part No. 12264



- 292 Washer
- 294 Washer, 1/4" split lock
- 699 Screw, 2-56 X 1/4" R.H.
- 799 Screw, 8-32 X 1/4" R.H.
- 2269 Washer, Inter, chain idler
- 2270 Stud, framer gear
- 2272 Screw, intermittent framer
- 2275 Gear, intermittent framer
- 2279 Gear, segmental
- 2282 Bearing, ball
- 5220 Screw, 8-32 X 5/16" binder head
- 5222 Screw, 5-40 X 7/32" binder head
- 9175 Screw, 8-32 allen head set
- 10781 Bracket, intermittent framer
- 10782 Plate, intermittent chain idler
- 10783 Rod, chain idler slide
- 10784 Rack, chain idler
- 10785 Stud, chain idler bearing
- 10786 Bracket, chain idler slide
- 12360 Stud, intermittent framer gear
- 12504 Pinion, intermittent framer
- 12523 Screw, 1/4"-20 X 1" filister head
- 12616 Bracket, segmental gear mounting



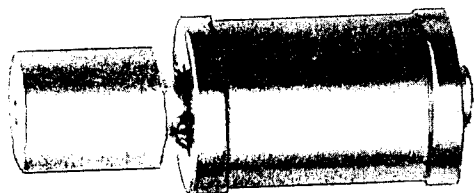
Feed and Intermittent Chain Idler Assembly - No. 2305



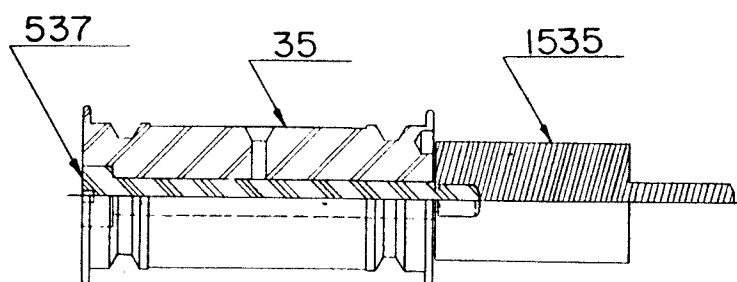
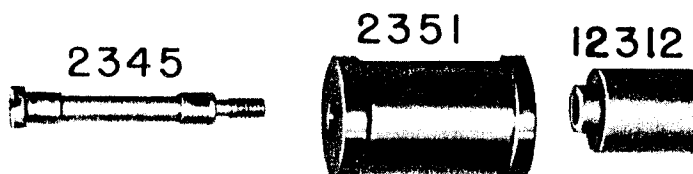
- 1196 Sprocket and Bearing Assembly
- 2302 Stud, chain idler
- 5220 Screw, binder head

NOTE! Two (2) number 2305 assemblies are used in the De Vry "12000 Series" 35mm. projector, (1) a Feed Chain Idler Assembly and (2) an Intermittent Chain Idler Assembly.

Film Idler Roller Assembly - Part No. 12103

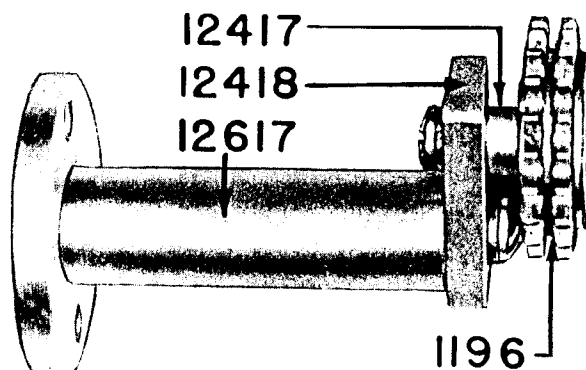


- 2345 Shaft, floating film idler
- 2351 Roller, floating film idler
- 12312 Spacer, film roller



Film Guide Roller Assembly Part No. 46

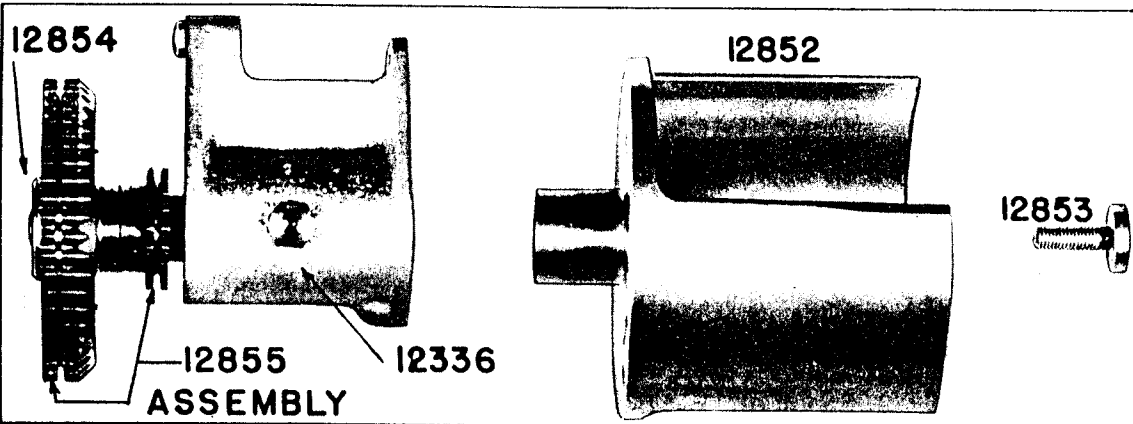
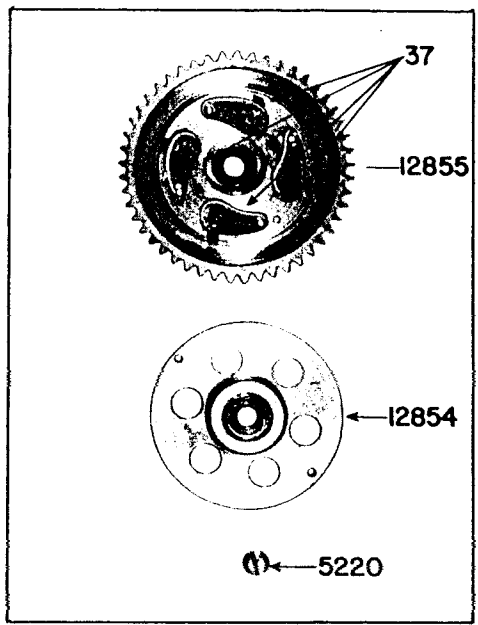
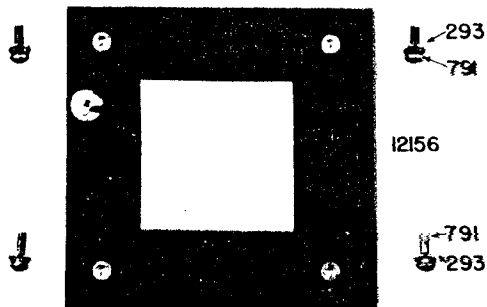
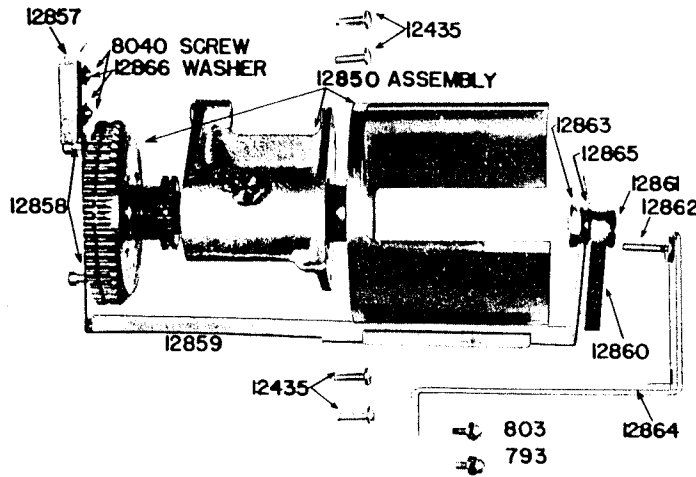
- 35 Roller, film
- 537 Shaft, roller
- 1535 Stud, roller



Fixed Chain Idler Assembly - Part No. 12272

- 1196 Sprocket and Bearing Assembly
- 12417 Stud, fixed chain idler
- 12418 Spacer, fixed chain idler
- 12617 Bracket, fixed chain idler

Barrel Shutter Kit Assembly - Part No. 12570



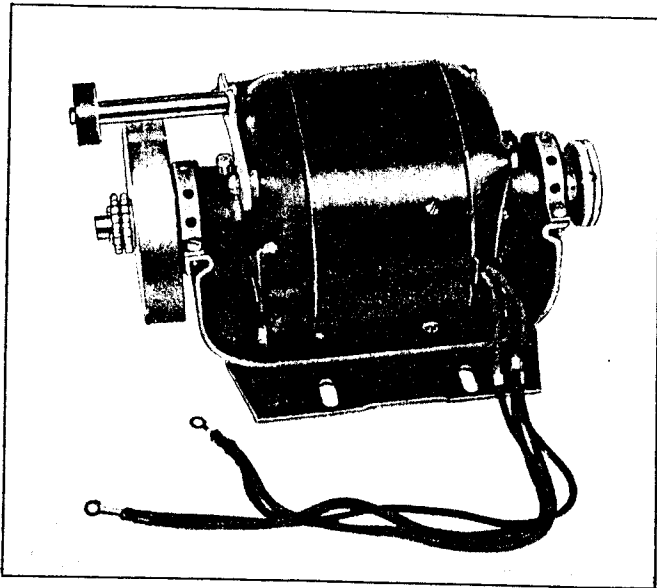
**Barrel
Shutter
Assem.
Part No.
12850**

- 293 Washer, No. 10 lock
- 791 Screw, 10-32 X 1/2" Rd. Hd.
- 793 Washer, No. 8 lock
- 803 Screw, 8-32 X 3/8" R.H.M.
- 8040 Screw, 5-40 X 1/4" Binder Hd.
- 12156 Baffle Assembly
- 12435 Screw, 8-32 X 1/2" Binder Hd.
- 12857 Balance, fire shutter
- 12858 Screw, shutter retaining
- 12859 Shutter, fire
- 12860 Booster

12850 BARREL SHUTTER ASSEMBLY
Consisting of the following parts

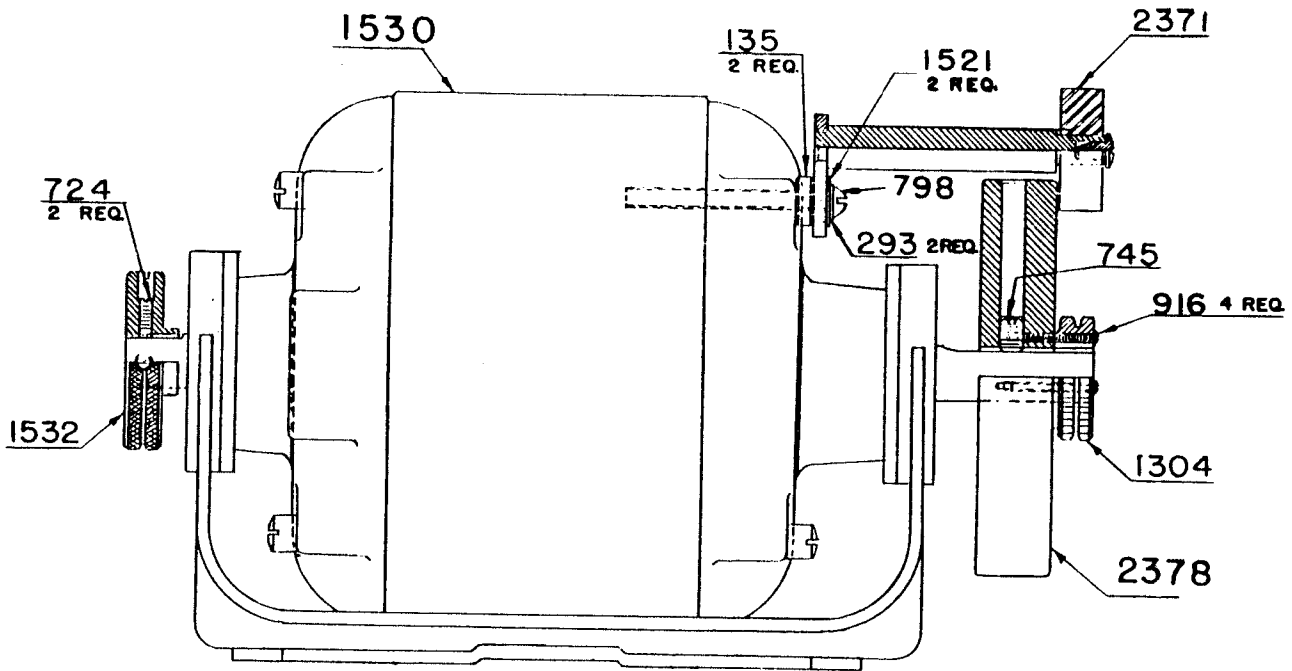
- 37 Governor Weight Assembly
- 2293 Bearing, ball
- 2304 Bearing, ball (governor)
- 5220 Screw, Binder Head
- 9175 Screw, Allen Head Set
- 12336 Bracket, shutter
- 12851 Shaft, shutter
- 12852 Shutter, film
- 12853 Screw, shutter locking
- 12854 Governor, fire shutter
- 12855 Chain Sprocket Assembly
(Consisting of No. 11717
Governor Weight Pivot Pin
No. 12541 Mechanism Drive
Chain Sprocket and No. 12856
Shutter Drive Chain Sprocket)

Drive Motor Assembly - Part No. 1602

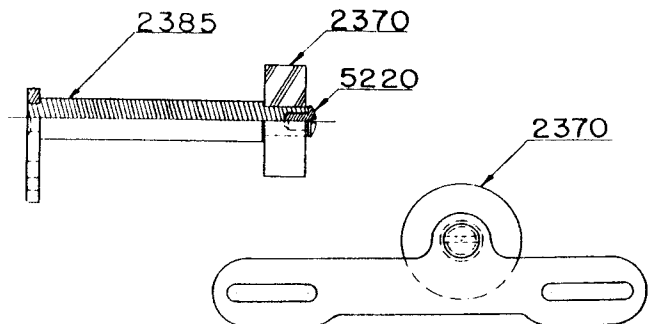
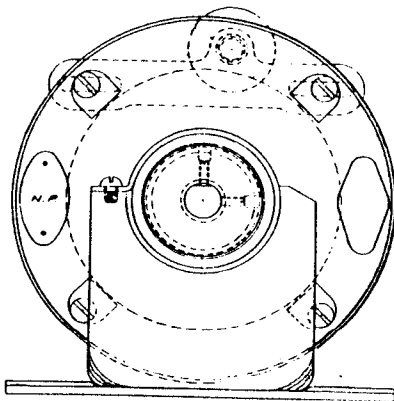


- 135 Spacer
- 293 Washer, No. 10 Split Lock
- 724 Screw, 8-32 X 3/8" Set
- 745 Screw, 1/4"-20 X 5/16" Set
- 916 Screw, 5-40 X 5/8" Round Head
- 1304 Sprocket, Motor Chain (60 cycle)
- 1521 Washer, 1/2" O.D. X 3/16" I.D. Steel
- 1530 Motor, Complete Drive (3450 R.P.M., 115 Volt, 60 Cycle)
- 1532 Knob, Motor
- 2371 Shutter Driving Chain Idler Roller Sub Assembly
- 2370 Pulley, Adjustment
- 2385 Roller Bracket Assembly
- 5220 Screw, 8-32 X 5/16" Binder Hd.
- 2378 Flywheel, Motor

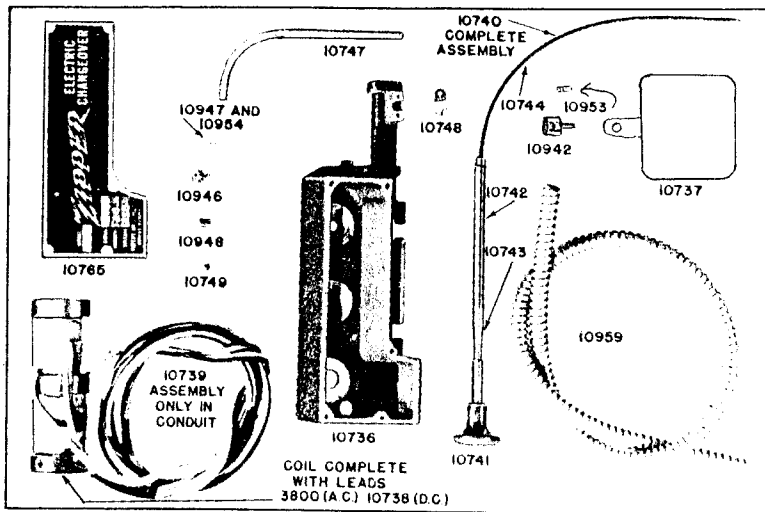
NOTE! Please specify Model number of projector when ordering parts.



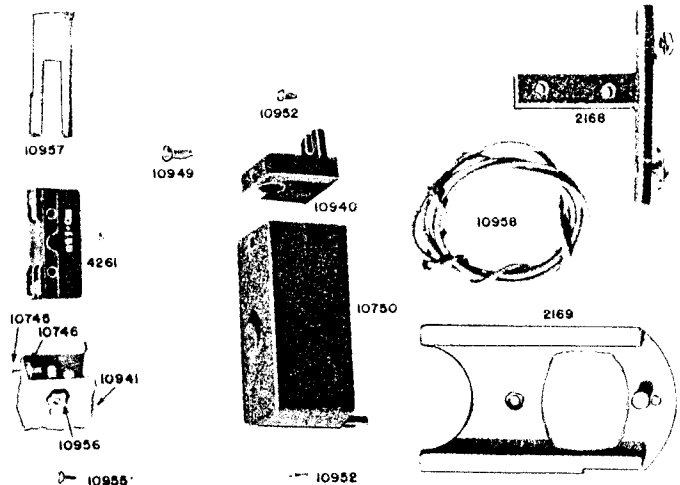
SHUTTER DRIVING CHAIN IDLER ROLLER SUB-ASSEMBLY
PART NO. 2371



Sound Changeover Assembly Part No. 2166

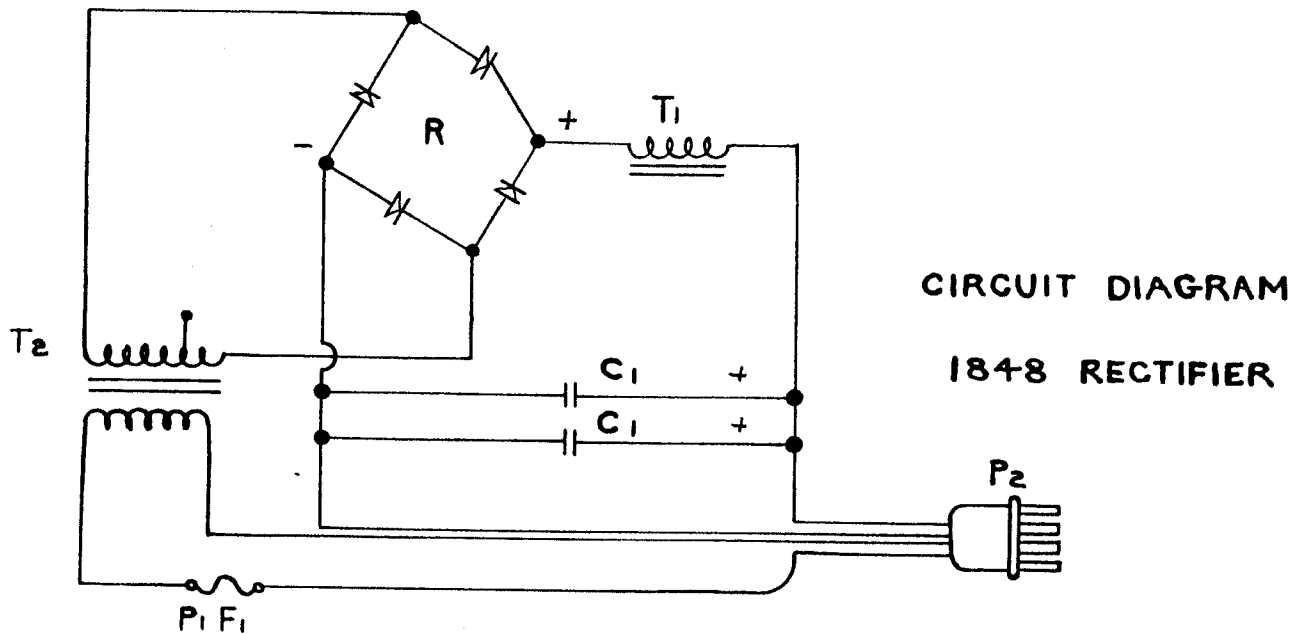
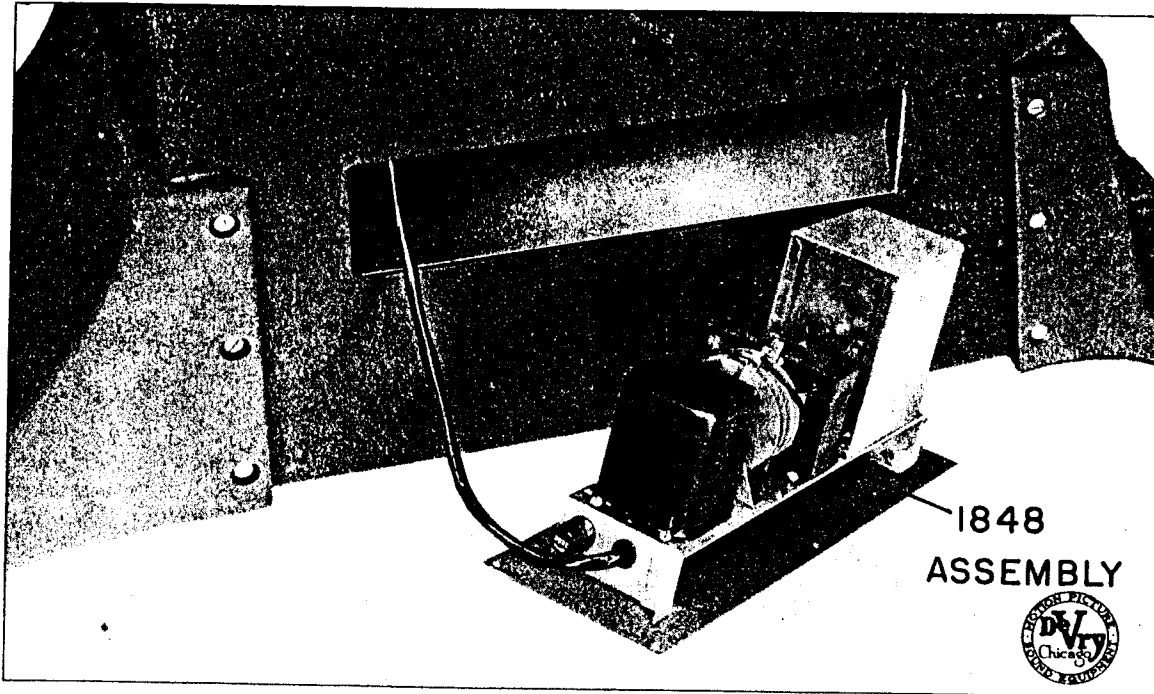


- 2168 Bracket, changeover mounting
- 2169 Casting, shutter slide
- 3800 Coil, A.C. changeover
- 4261 Switch, Micro sound
- 10736 Casting, main
- 10737 Shutter
- 10738 Coil, D.C. changeover
- 10739 Cable, four wire (with female connector)
- 10740 Armature, complete
- 10741 Knob, armature
- 10742 Section, steel armature
- 10743 Section, brass armature
- 10744 Shaft, flexible (with connector)
- 10745 Screw, armature speed adjusting
- 10746 Nut, armature speed adj. screw
- 10747 Tube, flexible shaft
- 10748 Clamp, flexible shaft tube
- 10749 Ball, armature speed adjusting
- 10750 Box, sound switch
- 10765 Plate, name
- 10940 Box End, sound switch
- 10941 Bracket, sound switch
- 10942 Swivel, (shutter with set screws)



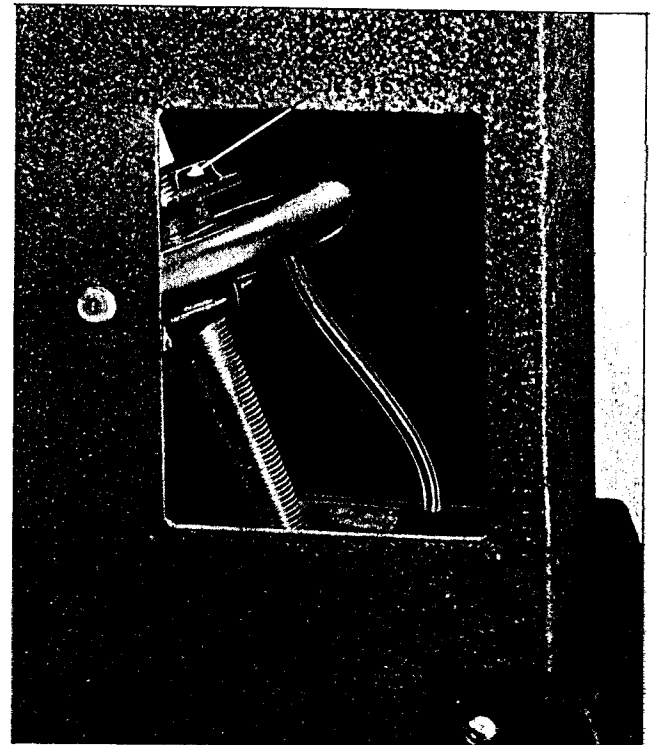
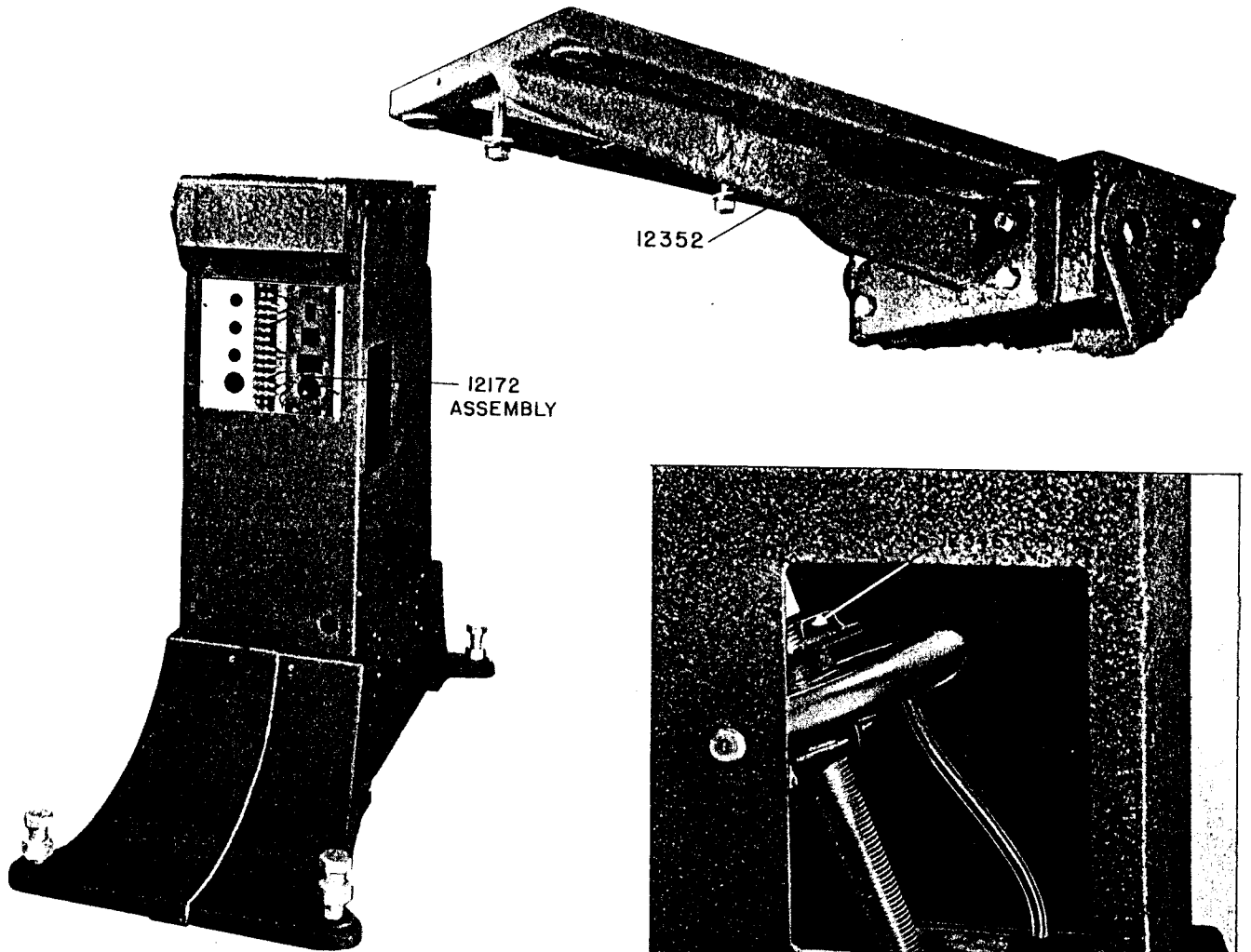
- 10946 Screw, coil mounting
- 10947 Screw, flexible shaft tube clamp
- 10948 Holder, flexible shaft tube
- 10949 Screw, sound switch box
- 10952 Screw, sound switch box mounting
- 10953 Screw, shutter swivel set
- 10954 Screw, name plate mounting
- 10955 Screw, sound switch bracket mounting
- 10956 Screw and Nut, sound switch bracket swivel
- 10957 Insulator, sound switch fiber
- 10958 Lead, sound switch (red)
- 10959 Conduit only

D. C. Exciter Supply Rectifier -- Part No. 1848

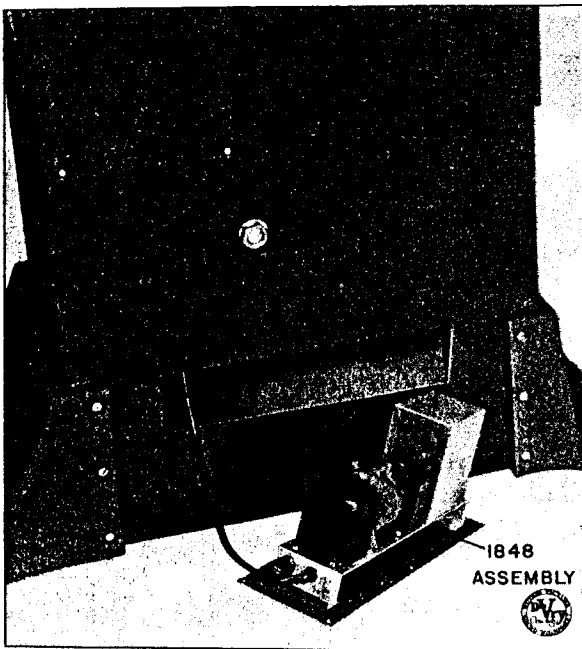


Code	Part No.	Description
C-1	3807	Condenser, 3000-3000 mfd. 20 Working Volts
	3810	Chassis, rectifier
	3842	Strip, 8 hole terminal
T-1	3867	Choke
R	3872	Element, Selenium rectifier
P-1	3964	Post, fuse
P-2	4008	Plug, 4 pin male
T-2	4242	Transformer, power
F-1	4539	Fuse, 1 ampere (3-A-G)

Projector Base Assembly -- Part No. 12599



HANDWHEEL TILT MECHANISM



- 1848 Rectifier Assembly (See Page 26A)
- 12172 Electrical Box Assembly
(See Breakdown on Page 29A)
- 12346 Yoke, tilt mechanism
- 12352 Bracket, projector head mounting

FOR PARTS LIST OF THE
ELECTRICAL UNITS OF EQUIPMENT
REFER TO PAGES INDICATED BELOW

1. POWER AMPLIFIER

Refer to Schematic Wiring Diagram on Page 34.
Refer to Code and Parts List on Page 35.

2. EQUALIZER PANEL OF AMPLIFIER

Refer to Schematic Wiring Diagram on Page 38.
Refer to Code and Parts List on Page 39.

3. MONITOR SPEAKER IN AMPLIFIER

Refer to Schematic Wiring Diagram and Parts
List on Page 40.

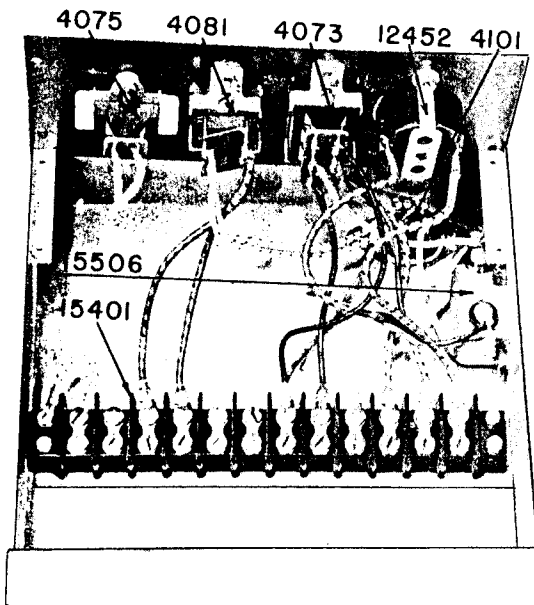
4. PRE-AMPLIFIERS

Refer to Schematic Wiring Diagram and Parts
List on Page 41.

(NOTE! All pages referred to above are in the
OPERATING and SERVICE SECTION of this manual.)

Electrical Box Assembly - Part No. 12172

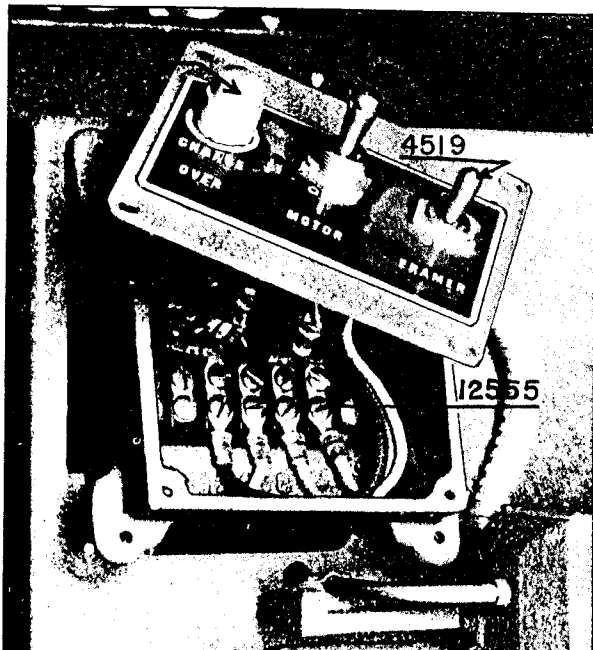
Located in Projector Base



- 4073 Receptacle, 6 pin
- 4075 Receptacle, 2 pin
- 4081 Receptacle, 4 pin
- 4101 Plug
- 12452 Receptacle, single flush
- 15401 Strip, terminal
- 15506 Condenser, .5 mfd. 600 Volt

(Refer to Projector Schematic Wiring Diagram, Page 33, Operating and Service Section)

Switch Control Box Assembly - Part No. 12190

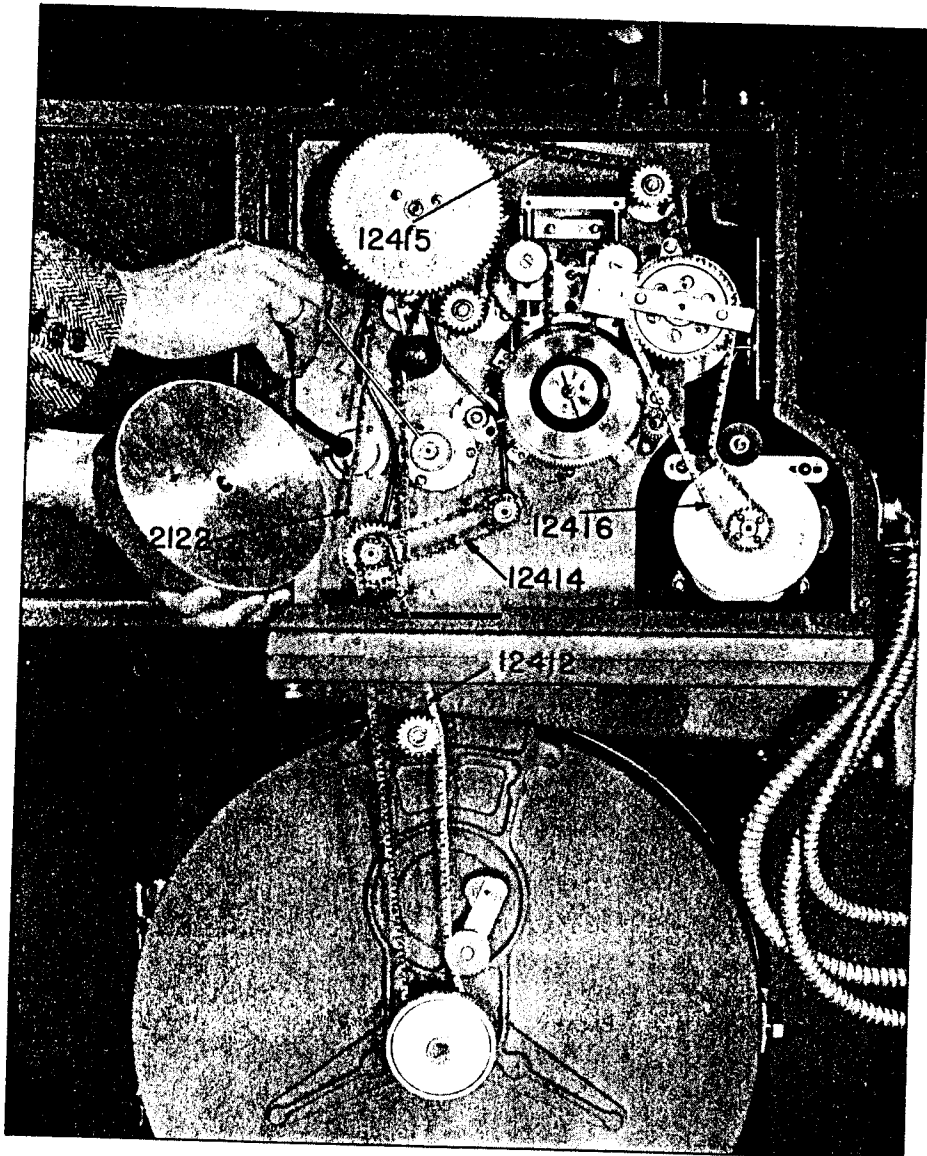


- 413 Lamp, framer
- 4519 Switch, single pole, single throw
- 9057 Switch, double pole, double throw
- 12385 Switch, push button
- 12458 Box, switch control
- 12456 Panel, control
- 12457 Cover, switch control box
- 12479 Socket, framer lamp
- 12555 Strip, terminal

(Refer to Projector Schematic Wiring Diagram, Page 33, Operating and Service Section)

"SILENT" Chains

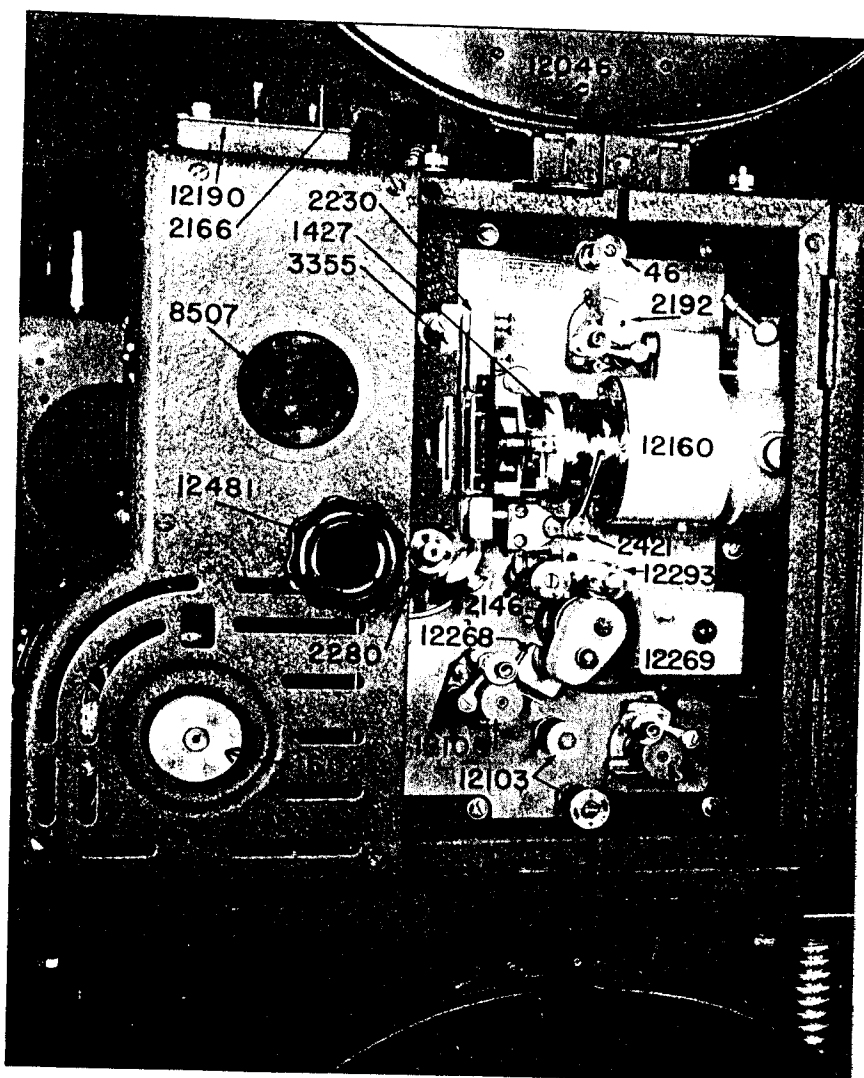
Used in the DeVry "12000 Series" Projector



- 2122 Chain, sound drive
- 12412 Chain, take-up reel sprocket
- 12414 Chain, holdback drive
- 12415 Chain, main drive
- 12416 Chain, motor drive

Assembly Identifications

Including Miscellaneous Individual Parts



Assembly Number	Description	Parts Analysis On Page	Assembly Number	Description	Parts Analysis On Page
46	Film Guide Roller Assembly	22A	12051	Lower Magazine Assembly	5A
1427	Tube, lens housing		12100	Take-up Sprocket Assembly	11A
1602	Motor Assembly	24A	12103	Film Idler Roller Assembly	22A
2166	Changeover Assembly	25A	12146	Sound Filter Assembly	14A
2192	Feed Sprocket Assembly	10A	12160	Lens Focusing Mount Assembly	13A
2230	Film Gate Assembly	6A, 7A	12189	Holdback Sprocket Assembly	12A
2280	Intermittent Assembly	18A, 20A	12190	Switch Control Box Assembly	29A
2421	Film Gate Release Assembly	8A	12268	Photo Cell Mount Assembly	16A
3355	Aperture Plate Assembly	9A	12269	Exciter Lamp & Slit Lens Assembly	14A
8507	Glass, red window		12293	Impedance Roller & Mounting Bracket Assembly	15A
12046	Feed Magazine Assembly	4A	12481	Knob, framer	