

# Film-Tech

The information contained in this Adobe Acrobat pdf file is provided at your own risk and good judgment.

These manuals are designed to facilitate the exchange of information related to cinema projection and film handling, with no warranties nor obligations from the authors, for qualified field service engineers.

If you are not a qualified technician, please make no adjustments to anything you may read about in these Adobe manual downloads.

[www.film-tech.com](http://www.film-tech.com)

CINEMECCANICA MILAN

L. 133/VIII-75  
up-to-date I-78

VICTORIA 5

Spare Parts  
Catalogue

V I C T O R I A 5

- FIG. 1 - PROJECTOR MAIN CASTING
- FIG. 2 - SPROCKETS AND PULLEYS
- FIG. 3 - ROLLER ARMS - ROLLERS
- FIG. 4 - SHUTTER DRIVE ASSEMBLY
- FIG. 5 - INTERMITTENT UNIT
- FIG. 6 - MOTOR
- FIG. 7 - OPTICAL SOUNDHEAD WITH DASHPOT  
AND MAGNETIC FLYWHEEL
- FIG. 7bis - SIMPLIFIED OPTICAL SOUNDHEAD
- FIG. 8 - GATE BRACKET AND GATE FRAME
- FIG. 9 - THREE-LENS TURRET
- FIG. 10 - SINGLE LENS HOLDER
- FIG. 11 - ANAMORPHIC LENS HOLDER
- FIG. 12 - DASHPOT ASSEMBLY
- FIG. 13 - EXCITER LAMP HOUSING

The zeros (00) in front of numbers mean the piece is standard.  
WHEN ORDERING SPARES, PLEASE ALWAYS QUOTE THE SERIAL NUMBER OF  
THE PROJECTOR.

INTENTIONALLY BLANK

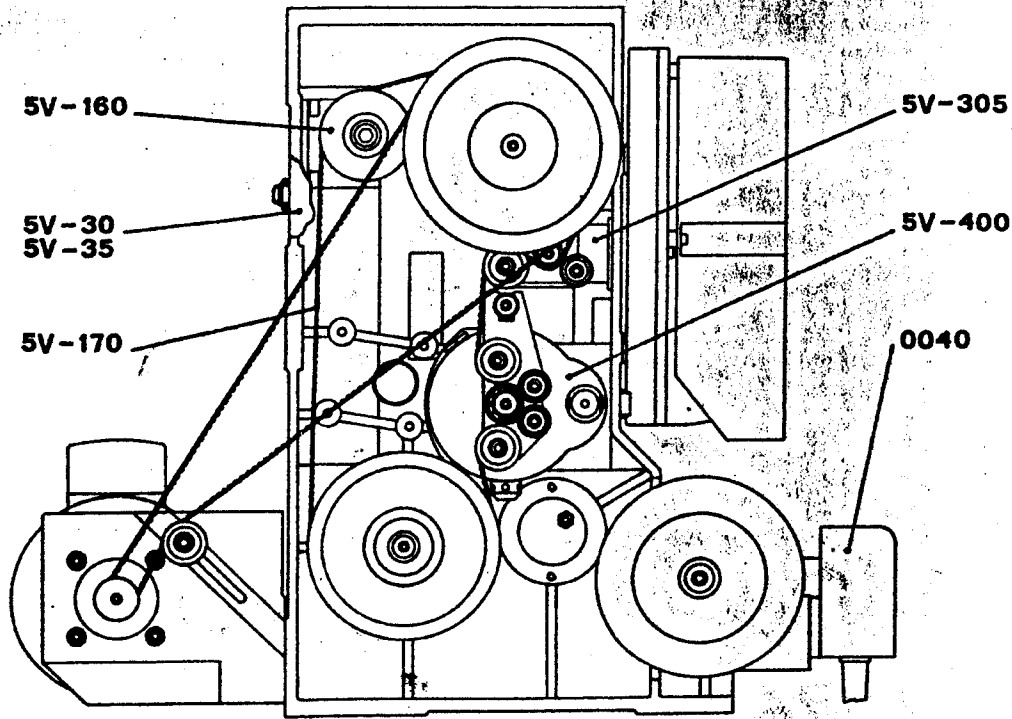
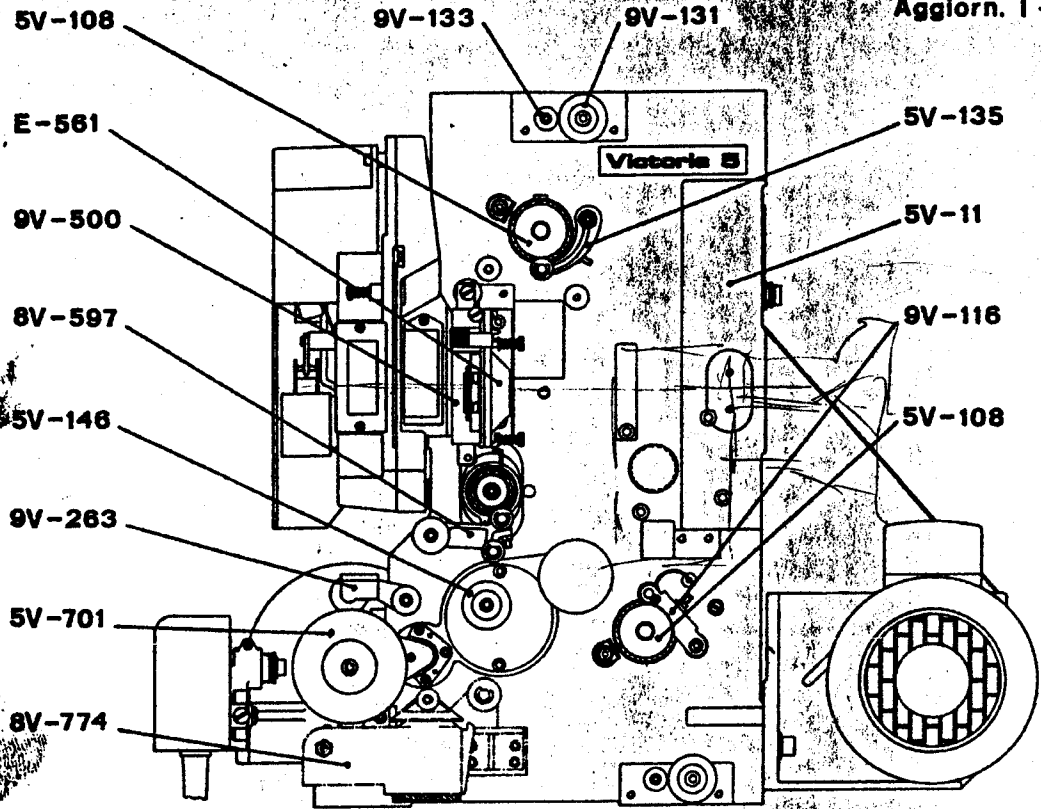


FIG. 1

FIG. 1 - PROJECTOR MAIN CASTING  
(from serial No. 3500)

0040 - Exciter lamp housing assembly  
5V-11 - Projector main casting  
5V-30 - Belt cover (two-lens turret)  
5V-35 - Belt cover (three-lens turret)  
5V-108 - Upper and lower sprocket shaft assembly  
5V-135 - Upper sprocket roller arm assembly  
5V-146 - Flanged roller assembly  
5V-160 - Belt idler assembly  
5V-170 - Toothed belt  
5V-305 - Shutter drive assembly  
5V-400 - Intermittent unit assembly  
5V-701 - Sound drum support assembly  
9V-116 - Lower sprocket roller arm assembly  
9V-131 - Spindle complete with flanged roller  
9V-133 - Spindle complete with rollers  
9V-263 - Pressure roller arm assembly  
9V-500 - Gate bracket assembly  
8V-597 - Intermittent sprocket roller arm assembly  
8V-774 - Dashpot assembly  
E-561 - Gate frame assembly

FIG. 2 - SPROCKETS AND PULLEYS

00728 - Ball bearing  
00749 - Ball bearing  
01023 - Spacing ring 32mm dia.  
01024 - Spacing ring 35mm dia.  
01025 - Spacing ring 22mm dia.  
5V-108 - Upper or lower sprocket shaft assembly  
5V-109 - Upper or lower sprocket sleeve  
5V-112 - Upper or lower sprocket shaft  
5V-118 - Upper or lower sprocket pulley - 78 teeth  
5V-124 - Pulley spacer  
5V-126 - Pulley spacer  
5V-145 - Stripper  
5V-160 - Belt idler assembly  
5V-161 - Idler bracket only  
5V-162 - Belt tensioning toothed pulley assembly  
5V-176 - Drive pulley - 90 teeth (50 Hz)  
5V-181 - Drive pulley - 94 teeth (60 Hz)  
9V-96 - Lower take-up drive pulley - 17 teeth  
8V-144 - 24 tooth upper or lower sprocket  
ES-8317 - Pulley spindle  
ES-8318 - Lock washer  
15-3653 - Circlip type UNI 3653 15mm dia.  
32-3654 - Circlip type UNI 3654 32mm dia.  
35-3654 - Circlip type UNI 3654 35mm dia.

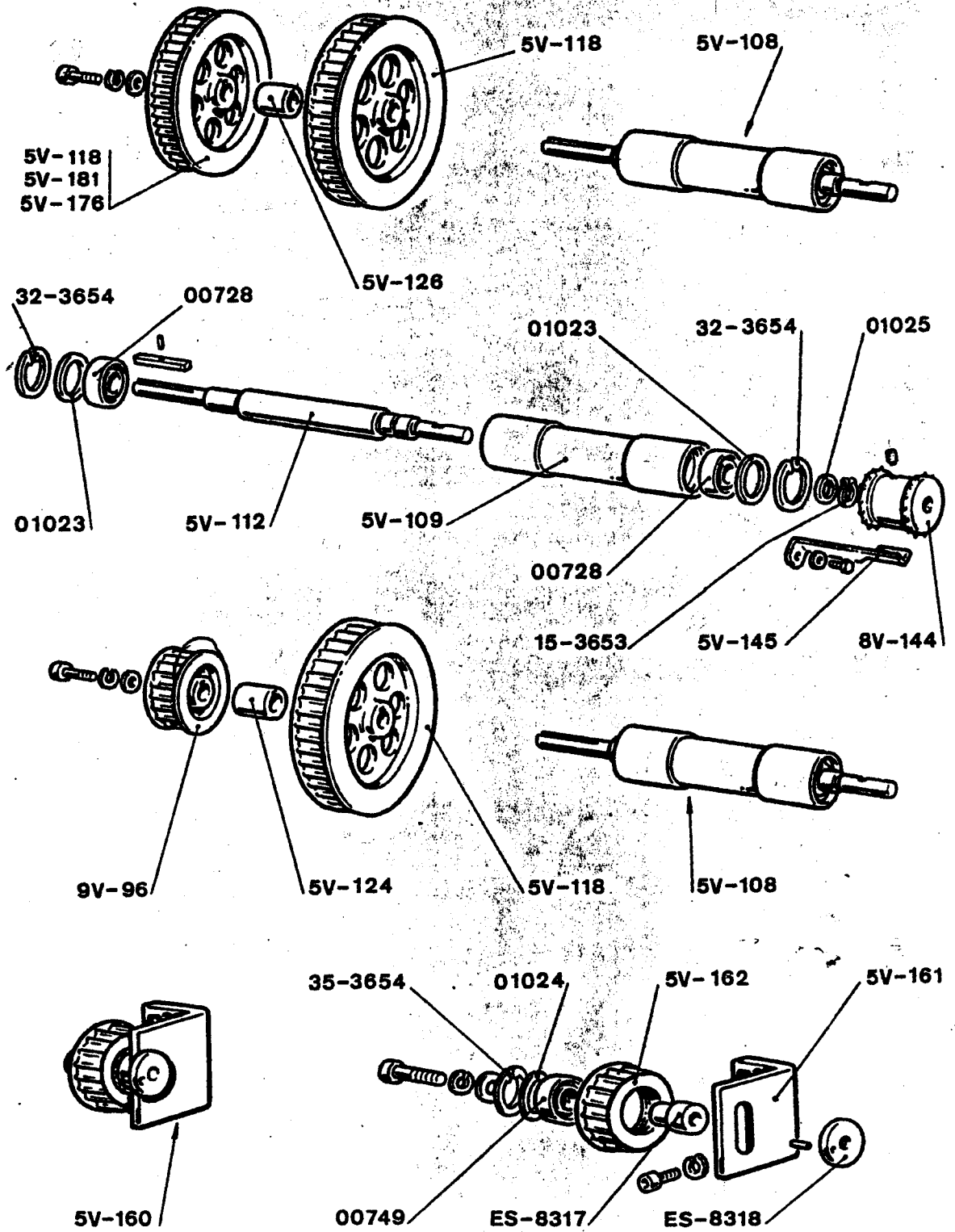


FIG. 2



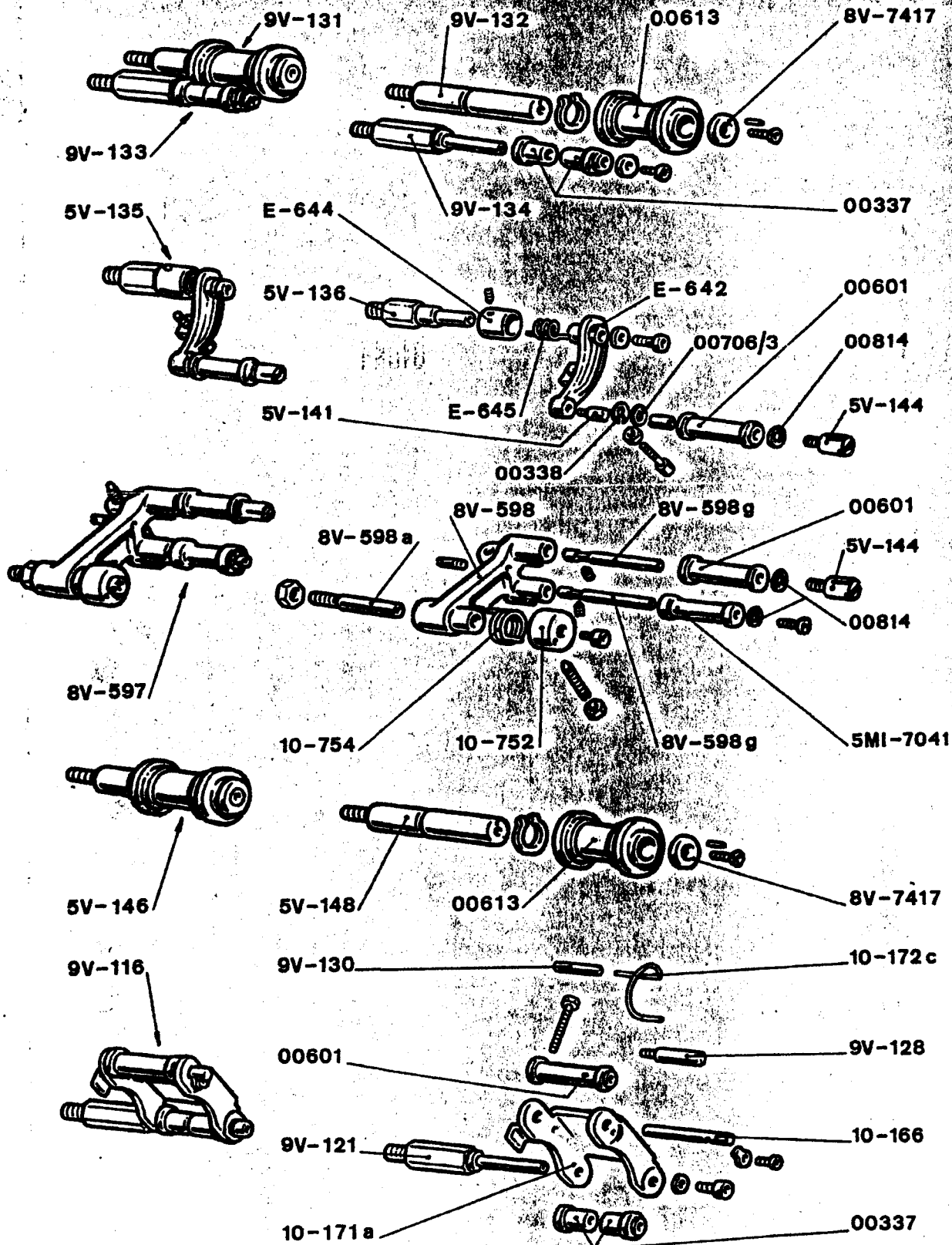


FIG. 3

FIG. 3 - ROLLER ARMS - ROLLERS

00337 - Roller - 15 mm o.d. - 6mm i.d.  
00338 - Roller circlip - 6mm dia.  
00601 - Grooved roller - 15mm o.d. 6mm i.d.  
00613 - Flanged roller - 33mm o.d. 14mm i.d.  
00706/3 - Washer  
00814 - Washer  
5V-135 - Upper roller arm assembly  
5V-136 - Upper roller arm spindle  
5V-141 - Roller spindle  
5V-144 - Threaded spindle  
5V-146 - Spindle complete with flanged roller  
5V-148 - Flanged roller spindle  
5MI-7041 - Roller  
9V-116 - Lower roller arm assembly  
9V-121 - Lower roller arm spindle  
9V-128 - Roller arm stop rod  
9V-130 - Elastic pin  
9V-131 - Spindle complete with flanged roller  
9V-132 - Flanged roller spindle  
9V-133 - Spindle complete with rollers  
9V-134 - Roller spindle  
8V-597 - Intermittent sprocket roller arm assembly  
8V-598 - Intermittent sprocket roller arm (machined casting)  
8V-598a - Spindle for intermittent sprocket roller arm  
8V-598g - Roller spindle  
8V-7417 - Washer  
10-166 - Roller spindle  
10-171a - Lower roller arm (roller less)  
10-172c - Lower roller arm spring  
10-752 - Roller arm spring bush  
10-754 - Roller arm spring  
E-642 - Upper roller arm (machined casting)  
E-644 - Spring adjustment bush  
E-645 - Upper roller arm spring

FIG. 4 - SHUTTER DRIVE ASSEMBLY

00253 - Plug with gasket  
00832 - Mascarini microswitch  
00833 - Ball bearing  
01020 - Ball bearing  
01022 - Oil tight ring  
01023 - Spacing ring  
5V-305 - Shutter drive assembly  
5V-307 - Bevel shutter drive gear  
5V-309 - Bevel shutter shaft gear  
5V-311 - Drive shaft  
5V-313 - Bearing spacer  
5V-315 - Spacing washer  
5V-317 - Shutter shaft  
5V-325 - Belt containment roller  
5V-327 - Roller spindle  
5V-329 - Shutter flange  
5V-333 - Governor spring  
5V-335 - Governor complete with levers  
5V-336 - Front governor plate  
5V-337 - Shutter enclosure back plate (machined casting)  
5V-339 - Shutter with blades  
5V-345 - Shutter enclosure cover  
5V-346 - Shutter enclosure cover (machined casting)  
5V-349 - Safety dowser assembly  
5V-353 - Safety dowser knob  
5V-355 - Solenoid assembly  
5V-356 - Solenoid only  
5V-367 - Sight glass  
5V-368 - Sight cover  
5V-372 - Microswitch cover  
5V-436 - 13 tooth pulley  
5V-440 - Belt idler with bearings  
5V-443 - Belt idler spindle  
9V-422 - Lacing inspection plate  
9V-427 - Safety dowser spindle  
9V-440 - Picture-sound microswitch assembly  
9V-443 - Picture-sound microswitch only  
9V-444 - Mascarini microswitch assembly  
9V-447 - Dowser stop spindle  
9V-452 - Rubber dowser stop with screw  
E-279 - Shutter locking disc  
12-3653 - Circlip type UNI 3653 12mm dia.  
32-3654 - Circlip type UNI 3654 32mm dia.

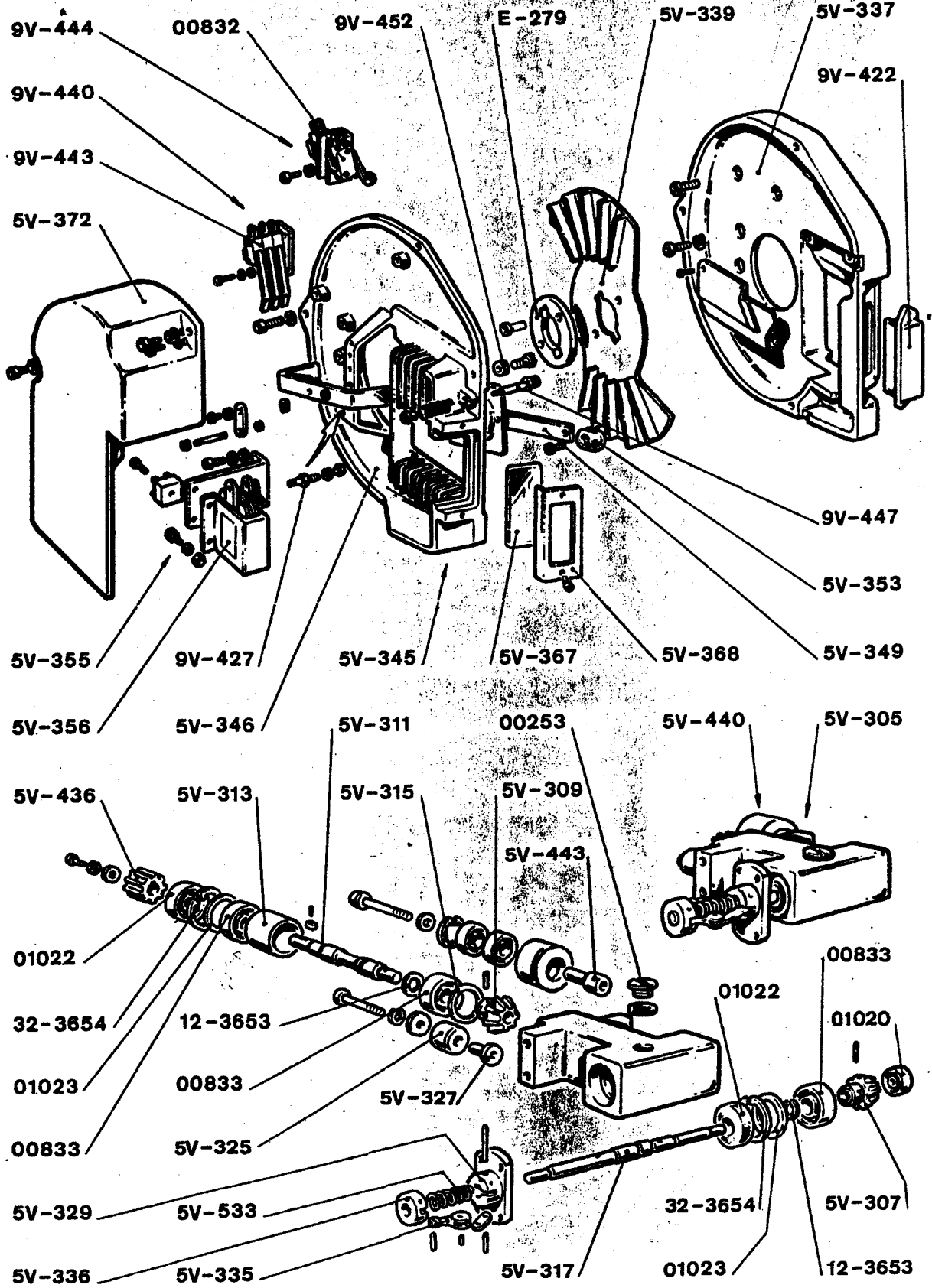


FIG. 4

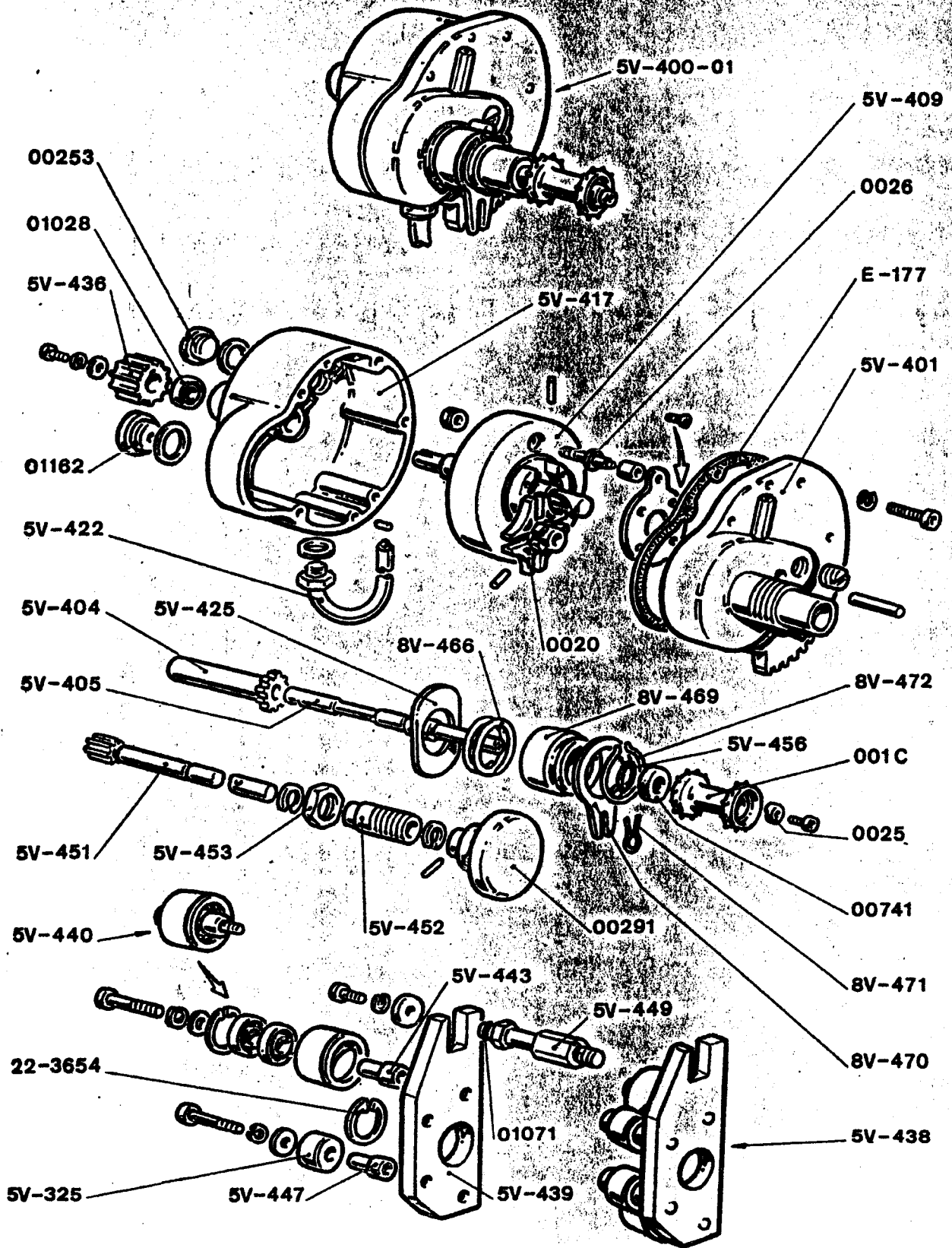


FIG. 5

FIG. 5 - INTERMITTENT UNIT

- 001C - 16 tooth intermittent sprocket
- 0020 - Maltese cross with cam, pin and roller
- 0025 - Lock washer with key
- 0026 - Cam with pin and roller
- 00253 - Plug for cam adjustment with gasket
- 00291 - Framing handle
- 00741 - Front oil tight ring
- 01028 - Back oil tight ring
- 01071 - Spindle gasket
- 01162 - Oil sight window with gasket
- 5V-325 - Belt containment roller
- 5V-400-01 - Complete intermittent unit less sprocket
- 5V-401 - Interm.unit main plate (mach.casting) with hinged spindle
- 5V-404 - Eccentric sleeve for intermittent shaft
- 5V-405 - Intermittent sprocket shaft
- 5V-409 - Flywheel with shaft
- 5V-417 - Intermittent unit cover (machined casting)
- 5V-422 - Oil drain plug with gasket and pipe
- 5V-425 - Clutch washer
- 5V-436 - 13 tooth pulley for flywheel
- 5V-438 - Bracket with idlers
- 5V-439 - Idler bracket
- 5V-440 - Belt idler with bearings
- 5V-443 - Belt idler spindle
- 5V-447 - Belt containment roller spindle
- 5V-449 - Spacer spindle for idler bracket
- 5V-451 - Framing shaft
- 5V-452 - Framing shaft support bushing
- 5V-453 - Bushing nut
- 5V-456 - Washer
- 8V-466 - Clutch washer spring
- 8V-469 - Spring load control bush
- 8V-470 - Roller arm stop collar
- 8V-471 - Collar spring
- 8V-472 - Collar circlip
- E-177 - Cover gasket
- 22-3654 - Circlip type UNI 3654 22mm dia.

FIG. 6 - MOTOR (from serial No. 3500)

- 00291 - Knob - 50mm dia.
- 5V-170 - Toothed belt
- 5V-626 - 4-pole motor pinion - 50 Hz
- 5V-436 - 4-pole motor pinion - 60 Hz
- 5V-440 - Belt idler with bearings
- 5V-602 - Motor bracket
- 5V-603 - Belt idler assembly
- 5V-614 - Belt idler washer
- 5V-622 - Belt idler spindle
- 5V-625 - 4-pole motor 50 Hz 1,440 R.P.M.
- 5V-635 - 4-pole motor 60 Hz 1,780 R.P.M.
- 5V-675 - 8-pole motor pinion - 50 Hz
- 5V-680 - 8-pole motor pinion - 60 Hz
- 5MI-7002 - 8-pole motor 50 Hz - 730 R.P.M.
- 5MI-7003 - 8-pole motor 50 Hz - 860 R.P.M.

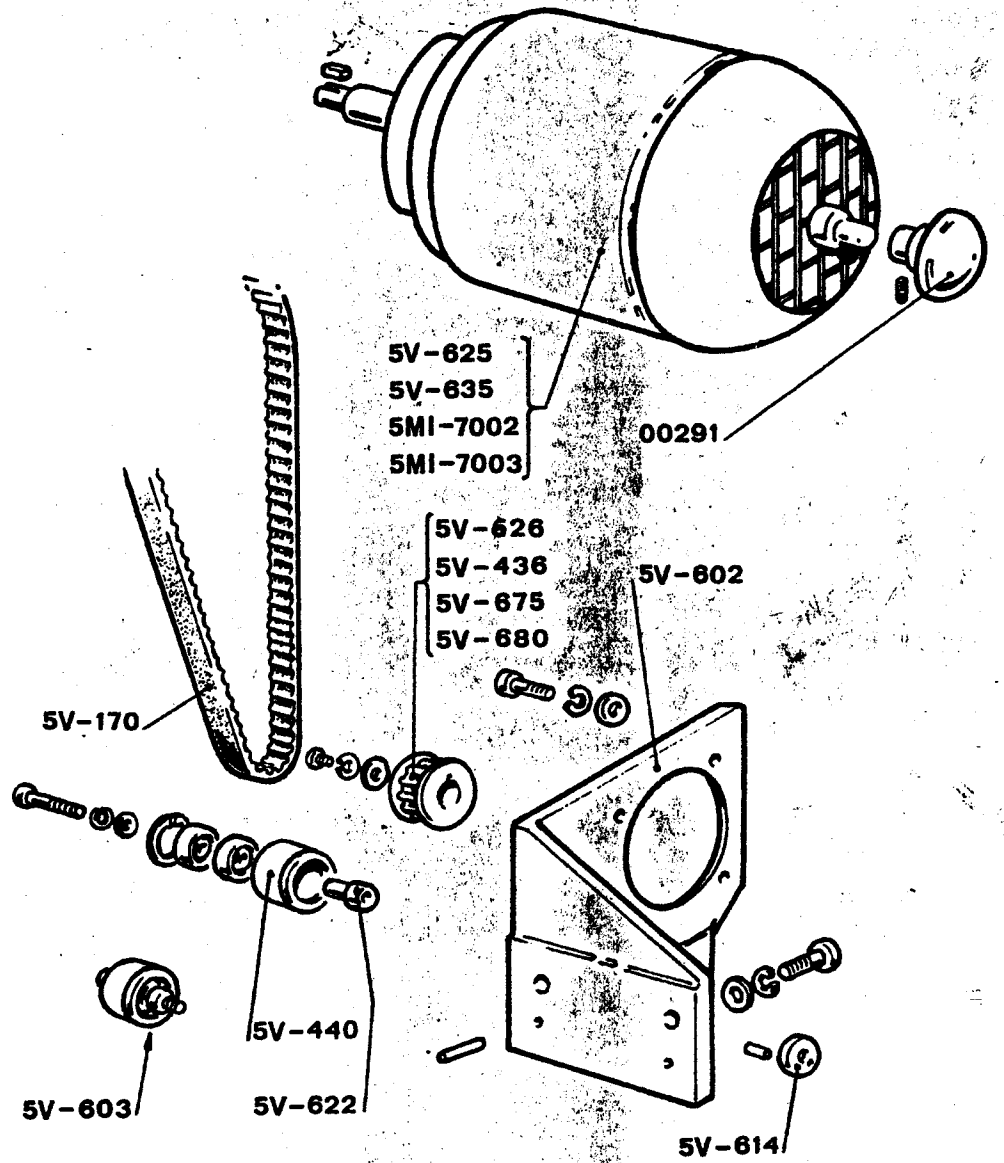


FIG. 6



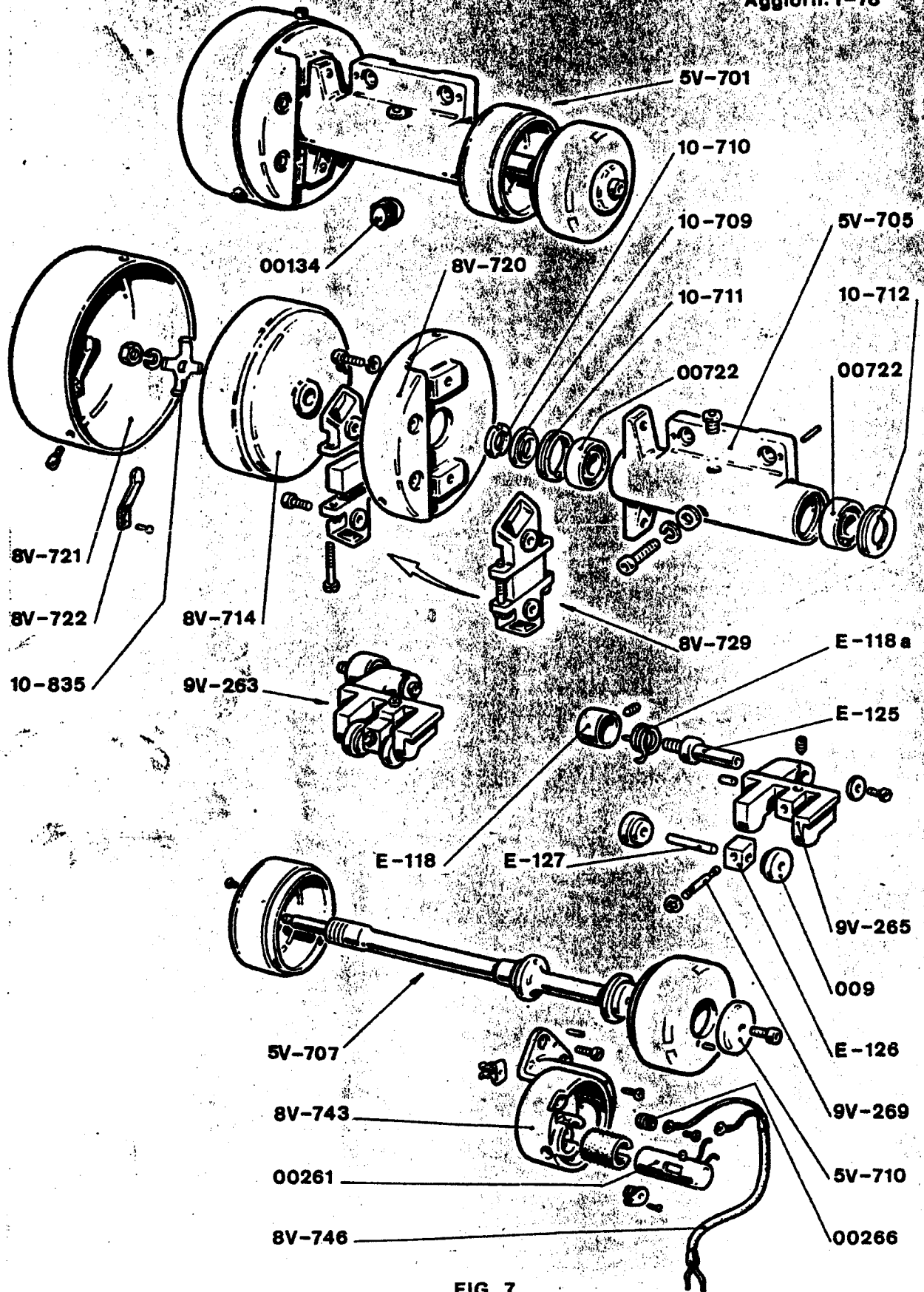


FIG. 7

FIG. 7 - OPTICAL SOUNDHEAD WITH DASHPOT  
AND MAGNETIC FLYWHEEL

- 009 - Roller, 24mm o.d. - 6mm i.d.
- 00134 - Female connector for cell
- 00261 - Solar cell housing
- 00266 - Cell insulating washer with bush
- 00722 - Ball bearing
- 5V-701 - Drums bracket assembly
- 5V-705 - Drums bracket (machined casting)
- 5V-707 - Shaft with drums and screw
- 5V-710 - Drum fastening disc
- 9V-263 - Pressure roller arm assembly
- 9V-265 - Pressure roller arm (machined casting)
- 9V-269 - Block spindle
- 8V-714 - Flywheel
- 8V-720 - Flywheel housing (machined casting)
- 8V-721 - Flywheel housing cover with ground contact
- 8V-722 - Ground contact
- 8V-729 - Flywheel magnet
- 8V-743 - Cell bracket
- 8V-746 - Complete cell cable
- 8V-774 - Dashpot assembly as per FIG. 12
- 10-709 - Bearing adjustment washer
- 10-710 - Bearing adjustment washer
- 10-711 - Back bearing locking washer
- 10-712 - Front bearing locking washer
- 10-835 - Flywheel spring washer
- E-118 - Pressure roller arm spring bush
- E-118a - Pressure roller arm spring
- E-125 - Pressure roller arm spindle
- E-126 - Drum roller arm block
- E-127 - Spindle for 24mm dia. roller

FIG. 7bis - SIMPLIFIED OPTICAL SOUNDHEAD

- 00134 - Female connector for cell
- 5V-710 - Drum fastening disc
- 5V-751 - Drums bracket assembly
- 5V-752 - Drums bracket (machined casting)
- 5V-753 - Bush
- 5V-754 - Shaft with drums and screw
- 5V-758 - Braking adjustment sleeve
- E-235 - Flywheel

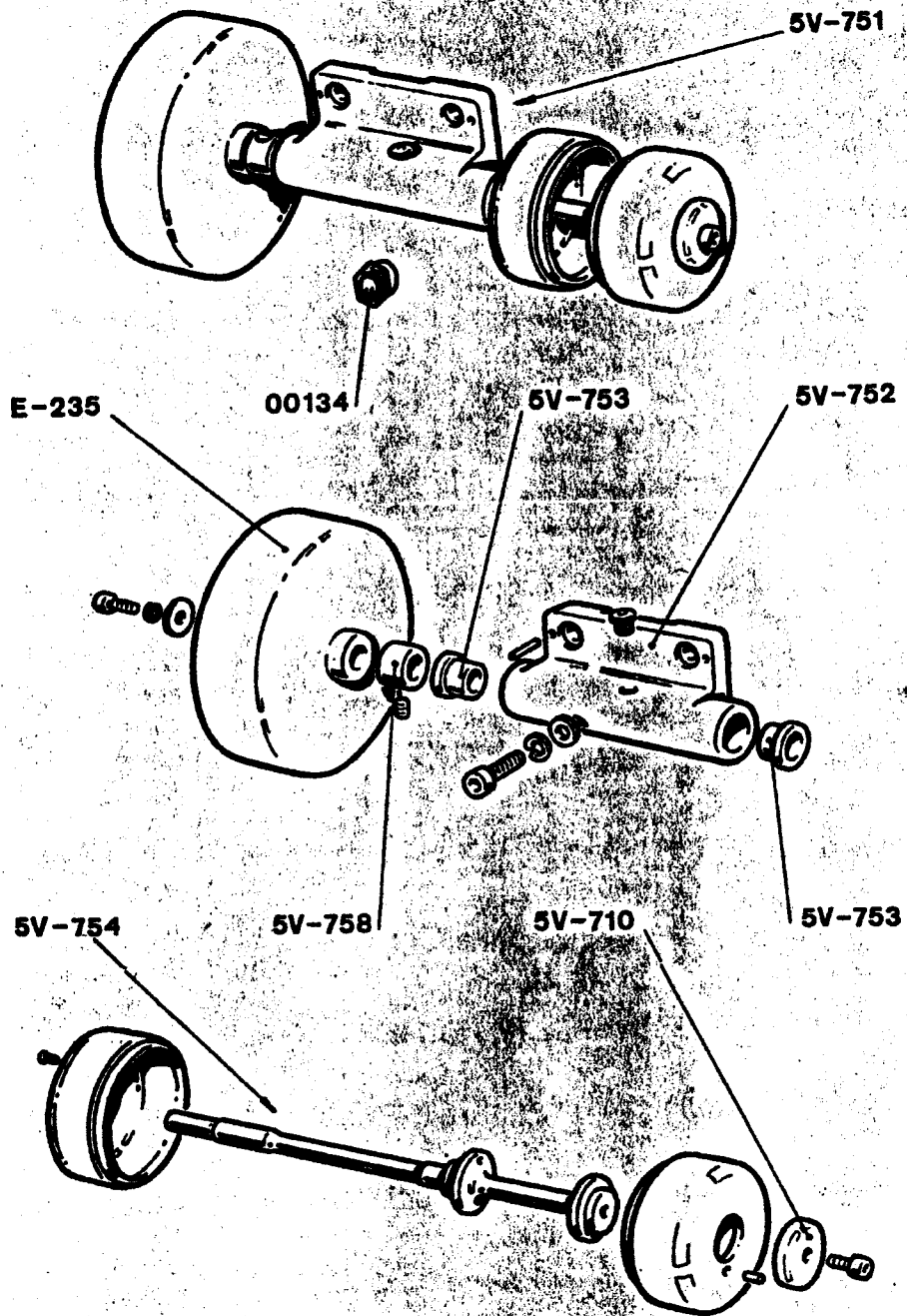


FIG. 7 bis

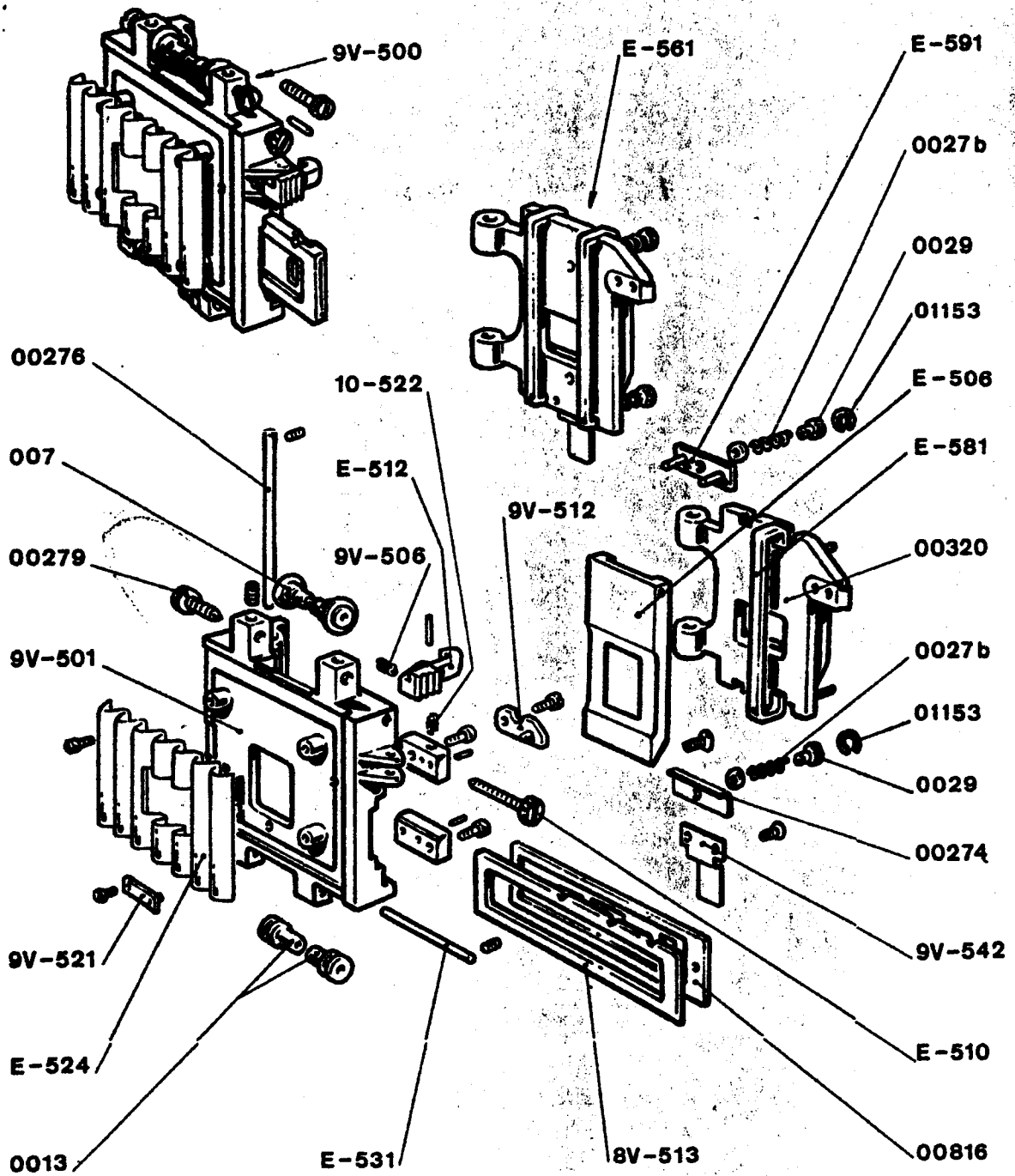


FIG. 8

FIG. 8 - GATE BRACKET AND GATE FRAME

- 007 - Spring guide roller assembly
- 0013 - Grooved roller
- 0027b - Pressure pad control spring
- 0029 - Spring adjusting knob
- 00274 - Lower pressure push plate
- 00276 - Gate frame spindle
- 00279 - Guide roller point screw
- 00320 - Gate frame (machined casting)
- 00816 - 3-ratio aperture plate (ratios to be advised)
- 01153 - Washer type Ideal 2.3mm dia.
- 9V-500 - Gate bracket assembly
- 9V-501 - Gate bracket (machined casting)
- 9V-506 - Gate frame closing lever spring
- 9V-512 - Aperture plate indexing lever
- 9V-521 - Aperture plate spring with spindle
- 9V-542 - Stripper
- 10-522 - Aperture plate indexing spring
- 8V-513 - Aperture plate moving guide
- E-506 - Gate pad
- E-510 - Gate pad stop spindle
- E-512 - Gate release lever
- E-524 - Corrugated heat shield
- E-531 - Lower roller spindle
- E-561 - Gate frame assembly
- E-581 - Pressure pad (2 pieces)
- E-591 - Upper push plate

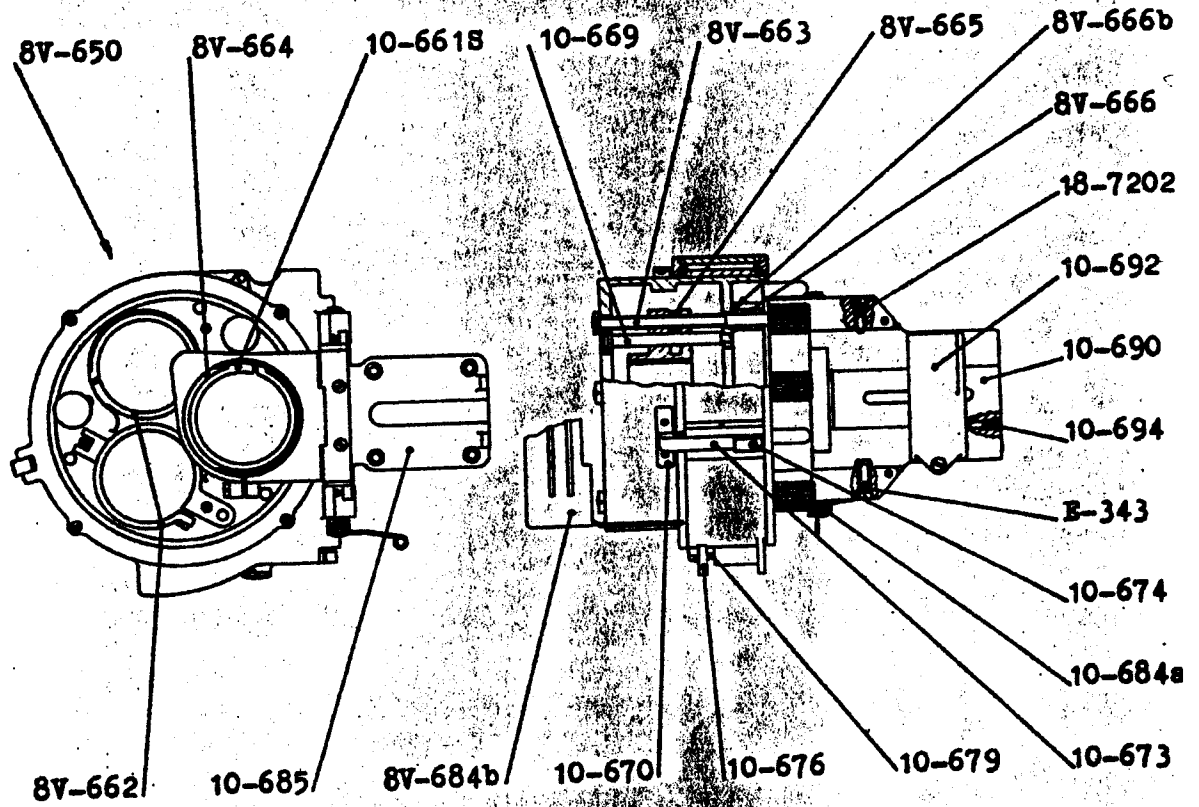
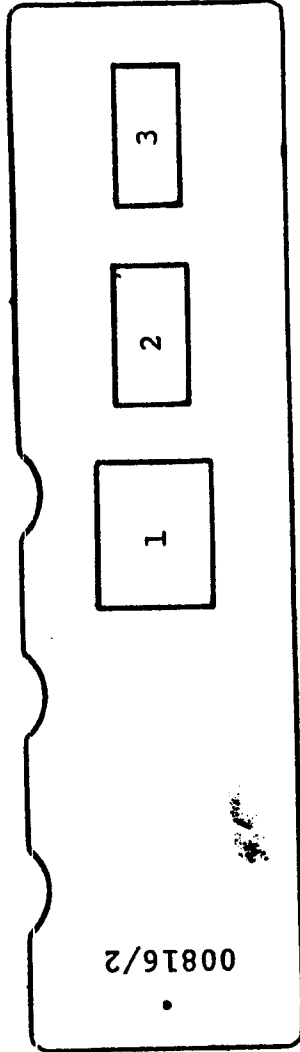
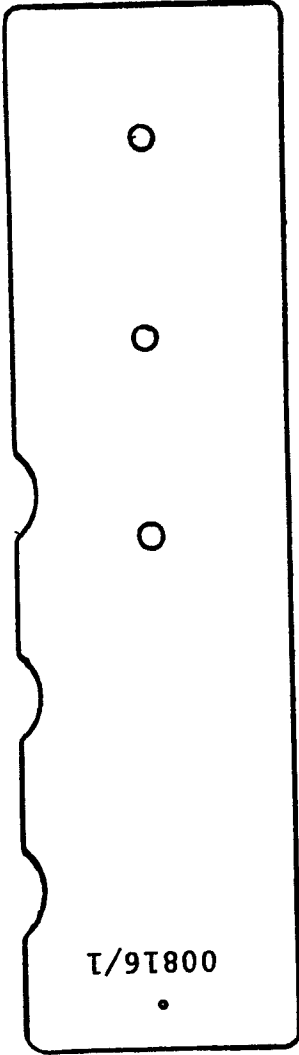


FIG. 9

FIG. 9 - THREE-LENS TURRET

- 8V-650 - Three-lens turret assembly
- 8V-662 - 62.5mm dia. lens holder with focusing screw
- 8V-663 - Lens holder focusing screw
- 8V-664 - 70.6mm dia. lens holder with focusing screw
- 8V-665 - Lens holder block
- 8V-666 - Focusing screw spacer
- 8V-666b - Washer
- 8V-684b - Light shield
- 10-661S - 70.6/62.5mm dia. eccentric sleeve
- 10-662T - 70.6/62.5mm dia. sleeve
- 10-669 - Eccentric guide spindle for lens holder
- 10-670 - Stop plate
- 10-673 - Stop lever
- 10-674 - Stop lever spring
- 10-676 - Turret locking lever
- 10-679 - Lever spring
- 10-684a - Turret pivoting spring
- 10-685 - Turret support plate (machined casting)
- 10-690 - Anamorphic lens support plate (machined casting)
- 10-692 - Anamorphic lens holder (machined casting)
- 10-694 - Plunger spring for No. 10-690
- 18-7202 - Upper plunger spring
- E-343 - Lower plunger spring





<u>PART #</u>	<u>RATIOS</u>	<u>#1</u>	<u>#2</u>	<u>#3</u>
00816/1	3 Centered Holes	—	—	—
00816/2	2:35/1:66/1:85	.685 x .815	.480 x .805	.430 x .805
00816/4	2:35u/1:66u/1:85u	.550 x .765	.410 x .765	.370 x .765
00816/13	2:35/1:85/1:66	.690 x .810	.435 x .805	.485 x .805
00816/14	2:35u/1:85u/1:66u	.550 x .765	.370 x .765	.410 x .765
00816/20	1:66u/1:2u/SCOPE/1:85u	.410 x .765	.685 x .785	.370 x .765
00816/22	2:35u/1:75u/1:85u	.550 x .765	.390 x .765	.370 x .765
00816/39	2:1SCOPEu/1:66u/1:85u	.550 x .650	.410 x .765	.370 x .730

NOTE: WITH CINEMECCANICA AUTOMATED 2 LENS TURRET POSITIONS 1 AND 3 ARE USED.

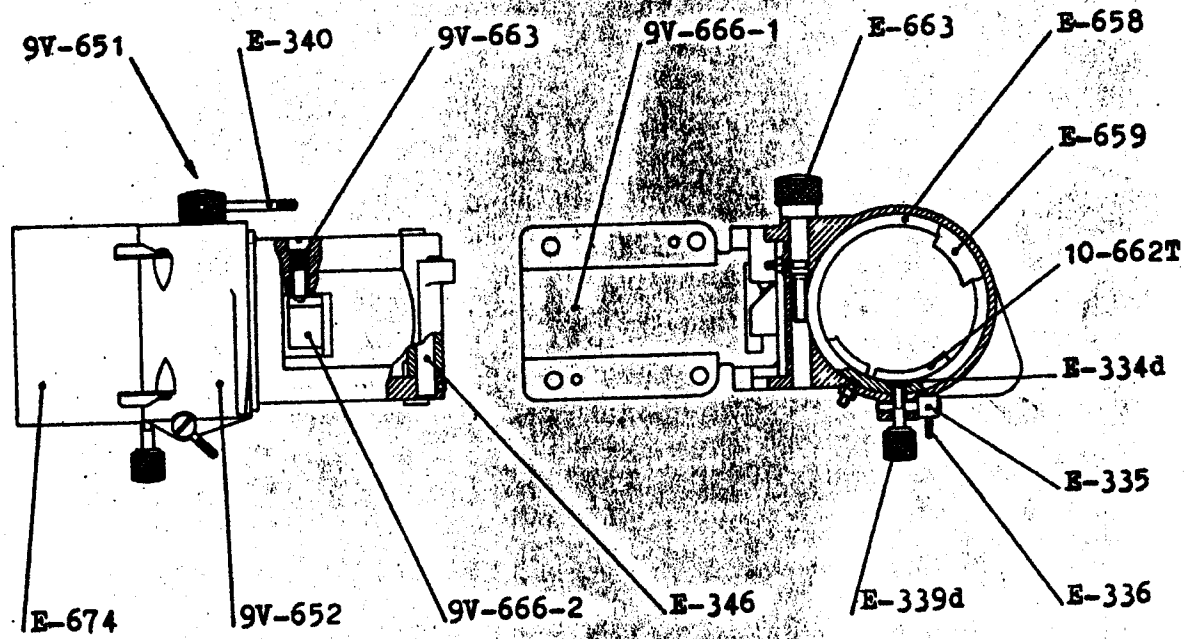


FIG. 10

FIG. 10 - PORTAOBBIETTIVO SEMPLICE

- 9V-651 - Fortaobbiettivo semplice compl.
- 9V-652 - Fortaobbiettivo (fus. lav.)
- 9V-663 - Molla per nasello
- 9V-666-1 - Sopperto portaobbiettivo
- 9V-666-2 - Arresto portaobb. (per Vict.9)
- 10-662 T - Riduzione diam. 70,6 - 62,5
- E-334 d - Piastrina fiss. obbiettivo
- E-335 - Vite morsetto portaobbiettivo
- E-336 - Perno vite morsetto
- E-339 d - Bottone fissaggio obbiettivo
- E-340 - Astina bottone pignone spostam.
- E-346 - Perno sopperto
- E-658 - Tubo portaobbiettivo diam.70,6
- E-659 - Tubo portaobbiettivo diam.62,5
- E-663 - Pignone spostam.obbiett.e bottone
- E-674 - Paraluce

FIG. 10 - SINGLE LENS HOLDER

- 9V-651 - Single lens holder assembly
- 9V-652 - Lens holder (machined casting)
- 9V-663 - Stop spring
- 9V-666-1 - Lens holder bracket
- 9V-666-2 - Lens holder stop (for Victoria 9)
- 10-662 T - 70.6mm to 62.5mm dia. sleeve
- E-334 d - Lens locking plate
- E-335 - Lens holder clamp screw
- E-336 - Clamp screw spindle
- E-339 d - Lens locking knob
- E-340 - Focusing rod
- E-346 - Bracket spindle
- E-658 - 70.6mm dia. lens holder sleeve
- E-659 - 62.5mm dia. lens holder sleeve
- E-663 - Focusing knob and pinion
- E-674 - Light shield

FIG. 10 - PORTE-OBJECTIF SIMPLE

- 9V-651 - Forte-objectif complet
- 9V-652 - Porte-objectif (fonderie seule)
- 9V-663 - Ressort
- 9V-666-1 - Support du porte-objectif
- 9V-666-2 - Butée du porte-objectif (pour Victoria 9)
- 10-662T - Réduction  $\varnothing$  70,6/62,5
- E-334d - Plaquette fixation objectif
- E-335 - Vis de serrage porte-objectif
- E-336 - Levier vis de serrage
- E-339d - Bouton fixation objectif
- E-340 - Levier de commande réglage porte-objectif
- E-346 - Axe support
- E-658 - Tube porte-objectif  $\varnothing$  70,6
- E-659 - Tube porte-objectif  $\varnothing$  62,5
- E-663 - Pignon de réglage du porte-objectif avec bouton
- E-674 - Pare-lumière

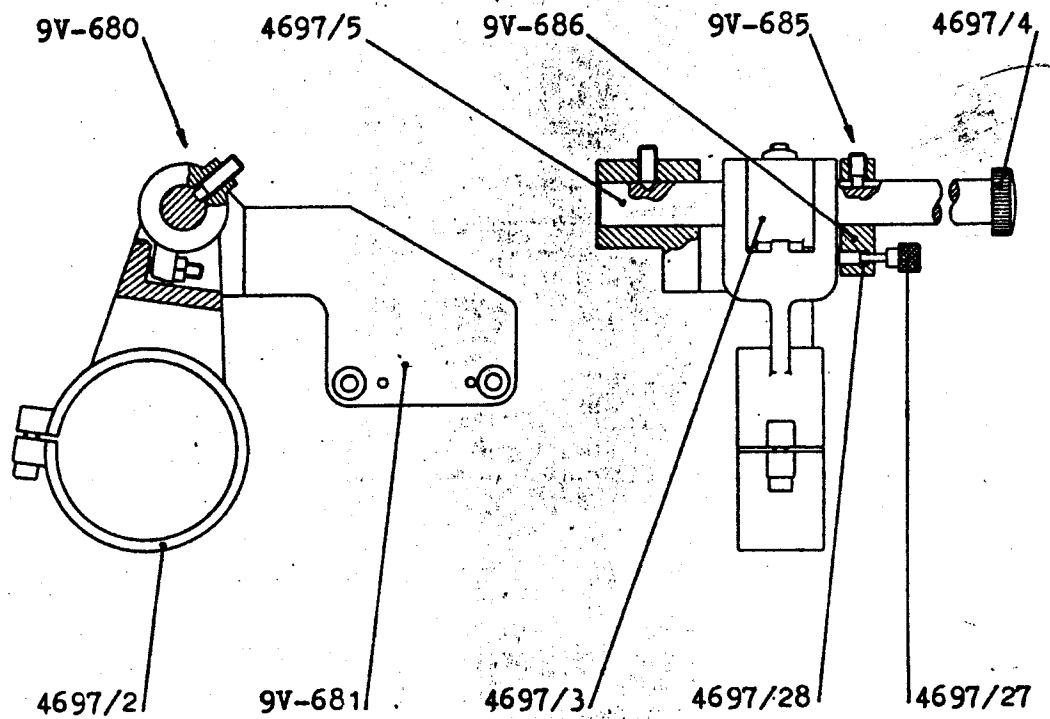


FIG. 11

FIG. 11 - PORTAOBBIETTIVO ANAMORFICO

- 9V-680 - Portaobbiettivo anamorfico completo
- 9V-681 - Sopperto perno per leva
- 9V-685 - Collare arresto leva completo
- 9V-686 - Collare arresto leva
- 4697/2 - Leva con anello
- 4697/3 - Arresto leva con anello
- 4697/4 - Tappo per perno
- 4697/5 - Perno per leva
- 4697/27 - Catenacciolo per collare
- 4697/28 - Molla catenacciolo

FIG. 11 - SUPPORT ANAMORPHOSEUR HYPERGONAR

- 9V-680 - Support objectif anamorphoseur complet
- 9V-681 - Support de l'axe
- 9V-685 - Collier d'arrêt du levier complet
- 9V-686 - Collier d'arrêt seul
- 4697/2 - Levier avec anneau
- 4697/3 - Collier d'arrêt central du levier
- 4697/4 - Embout moleté de l'axe
- 4697/5 - Axe pour levier
- 4697/27 - Verrou pour collier
- 4697/28 - Ressort de verrou de collier

FIG. 11 - ANAMORPHIC LENS HOLDER

- 9V-680 - Anamorphic lens holder assembly
- 9V-681 - Lever spindle support
- 9V-685 - Lever stop collar assembly
- 9V-686 - Lever stop collar
- 4697/2 - Lever with ring
- 4697/3 - Lever stop with ring
- 4697/4 - Spindle cap
- 4697/5 - Lever spindle
- 4697/27 - Collar latch
- 4697/28 - Latch spring

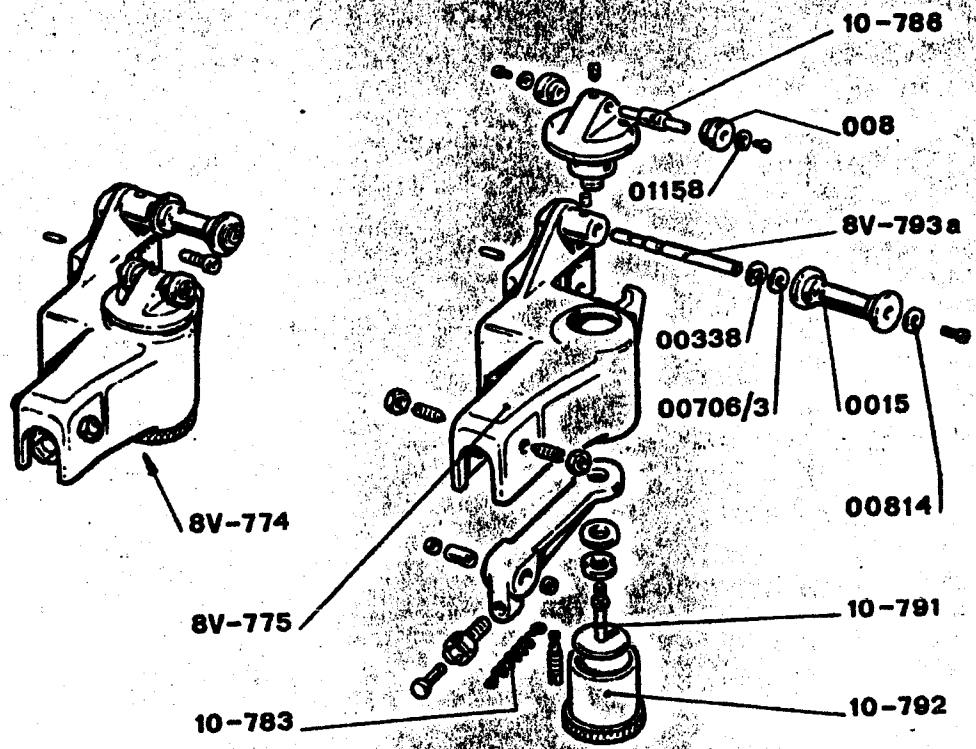


FIG. 12

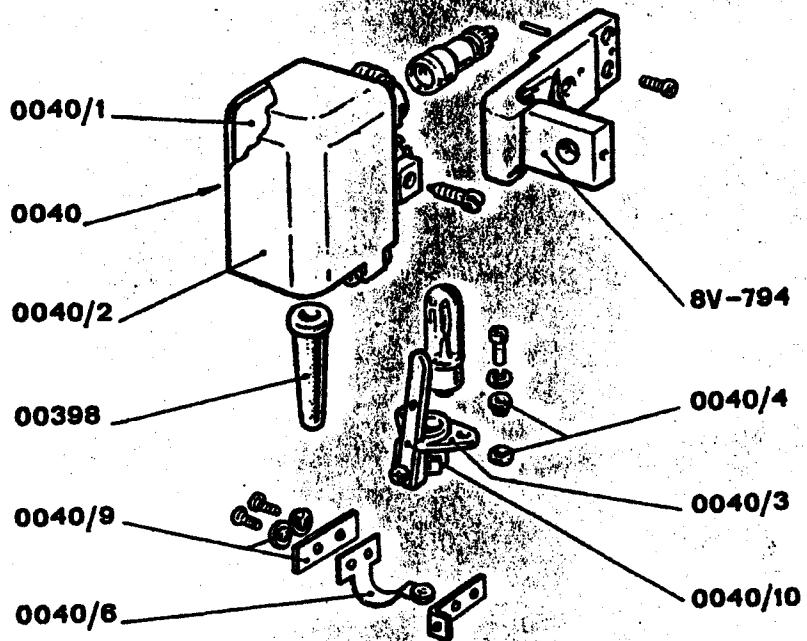


FIG. 13

FIG. 12 - DASHPOT ASSEMBLY

- 008 - Roller, 15mm o.d. - 5mm i.d.
- 0015 - Flanged roller
- 00338 - Roller circlip - 6mm dia.
- 00706/3 - Washer
- 00814 - Washer
- 01158 - Washer
- 8V-774 - Dashpot assembly
- 8V-775 - Dashpot (machined casting)
- 8V-793a - Flanged roller spindle
- 10-783 - Dashpot spring
- 10-786 - Spindle for 15 mm dia. roller
- 10-791 - Piston disc with spindle
- 10-792 - Oil tank

FIG. 13 - EXCITER LAMP HOUSING

- 0040 - Exciter lamp housing assembly
- 0040/1 - Exciter lamp housing (machined casting)
- 0040/2 - Exciter lamp housing cover
- 0040/3 - Exciter lamp holder with insulating bushes
- 0040/4 - Exciter lamp insulating bushes and washers
- 0040/6 - Exciter lamp contact spring
- 0040/9 - Insulating bushes for part.No. 0040/6
- 0040/10 - Exciter lamp locating spring with stud
- 00398 - Cable protection
- 8V-794 - Exciter lamp housing bracket

INTENTIONALLY BLANK



INTENTIONALLY BLANK

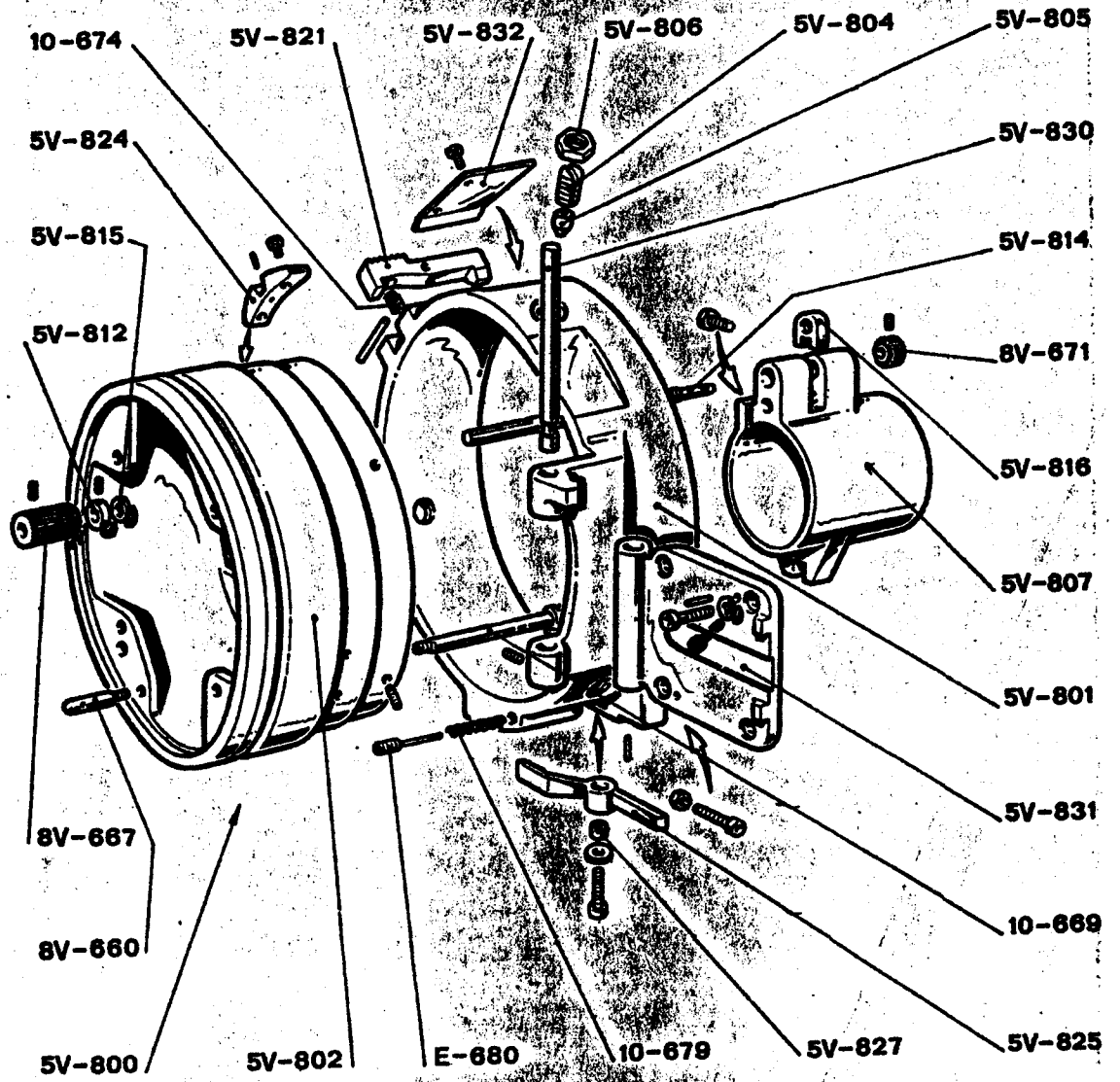
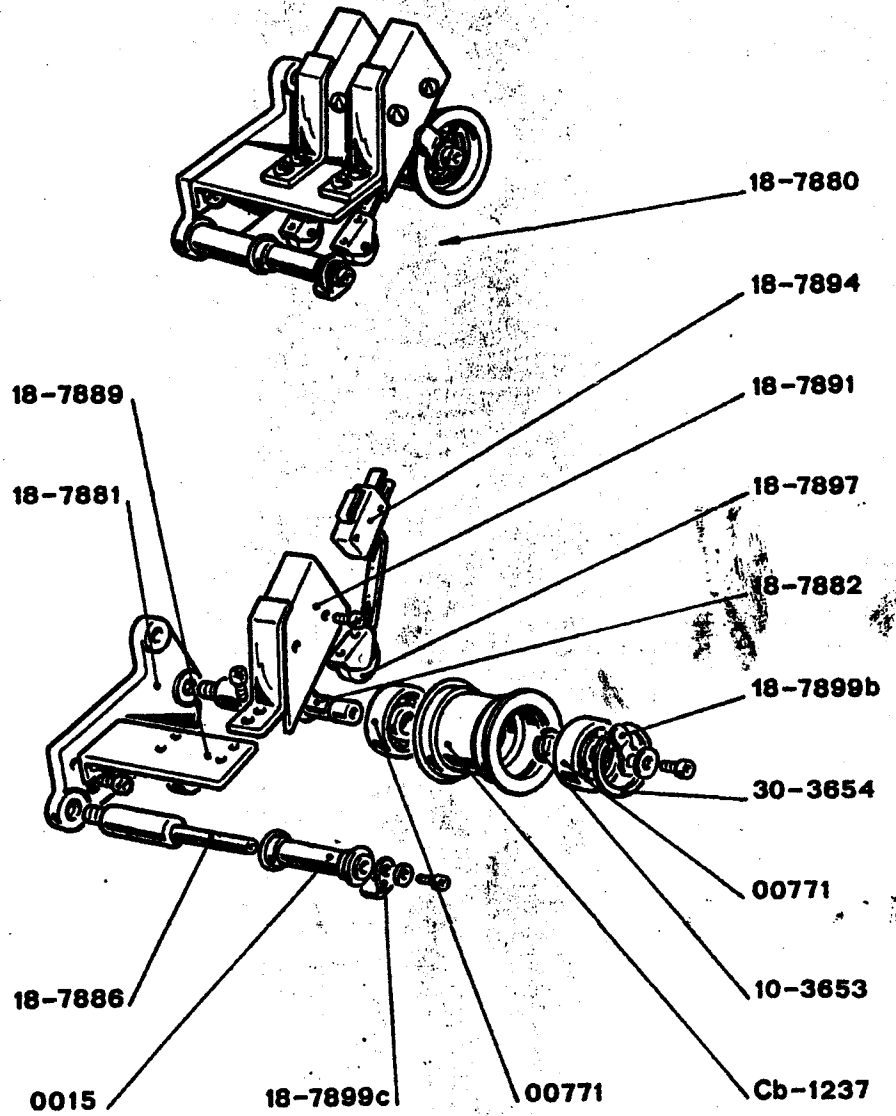


FIG. 15

FIG. 15 - MANUAL TWO-LENS TURRET

- 5V-800 - Manual two-lens turret
- 5V-801 - Fixed support
- 5V-802 - Rotating support
- 5V-804 - Special screw
- 5V-805 - Nylon wedge
- 5V-806 - Screw nut
- 5V-807 - Lens holder
- 5V-812 - Stop ring
- 5V-814 - Lens holder focusing screw
- 5V-815 - Spring washer
- 5V-816 - Lens holder block
- 5V-821 - Stop lever
- 5V-824 - Stop plate
- 5V-825 - Support locking lever
- 5V-827 - Locking lever bush
- 5V-830 - Support plate spindle
- 5V-831 - Support plate
- 5V-832 - Cover plate
- 8V-660 - Rotation spindle
- 8V-667 - Lens holder knob
- 8V-671 - Focusing screw ring
- 10-669 - Eccentric guide spindle
- 10-674 - Stop lever spring
- 10-679 - Support locking lever spring
- E-680 - Spring loading nut



**FIG. 19**

FIG. 19 - CORRIDOIO INFERIORE

- 00 15 - Rullino con guide
- 00771 - Cuscinetto a sfere
- 18-7880 - Corridoio inferiore di sicurezza completo
- 18-7881 - Supporto rulli (fus. lav.)
- 18-7882 - Perno per rullo 35
- 18-7886 - Perno per rullino con guide
- 18-7889 - Squadretta supporto microinterruttore
- 18-7891 - Supporto microinterruttore (nudo)
- 18-7894 - Microinterruttore completo di rullino e leva
- 18-7897 - Rullino per microinterruttore con perno
- 18-7899b - Linguetta di sicurezza rullo 35
- 18-7899c - Linguetta di sicurezza per rullino
- Cb-1237 - Rullo 35
- 10-3653 - Anello elastico UNI 3653  $\emptyset$  10
- 30-3654 - Anello elastico UNI 3654  $\emptyset$  30

FIG. 19 - ETOUFFOIR INFERIEUR

- 00 15 - Galet avec guide
- 00771 - Roulement à billes
- 18-7880 - Etouffoir inférieur de sécurité complet
- 18-7881 - Support tambours (fusion seule)
- 18-7882 - Axe pour tambour 35 mm.
- 18-7886 - Axe pour galet avec guide
- 18-7889 - Plaquette support micro-interrupteur
- 18-7891 - Support micro-interrupteur (nu)
- 18-7894 - Micro-interrupteur complet de galet et levier
- 18-7897 - Galet pour micro-interrupteur avec axe
- 18-7899b - Languette de sécurité tambour 35 mm.
- 18-7899c - Languette de sécurité pour galet
- Cb-1237 - Tambour 35 mm.
- 10-3653 - Rondelle élastique UNI 3653  $\emptyset$  10
- 30-3654 - Rondelle élastique UNI 3654  $\emptyset$  30

FIG. 19 - DOUBLE SIDED LOWER FILM BREAK SWITCH

- 00 15 - Flanged roller
- 00771 - Ball bearing
- 18-7880 - Double sided lower film break switch
- 18-7881 - Roller support (machined casting only)
- 18-7882 - 35mm roller spindle
- 18-7886 - Flanged roller spindle
- 18-7889 - Microswitch support plate
- 18-7891 - Microswitch support only
- 18-7894 - Microswitch complete with roller and lever
- 18-7897 - Microswitch roller with spindle
- 18-7899b - Safety tab for 35mm roller
- 18-7899c - Safety tab for roller
- Cb-1237 - 35mm roller
- 10-3653 - Circlip type UNI 3653 - 10mm dia.
- 30-3654 - Circlip type UNI 3654 - 30mm dia.

Disegnato  
da *Luigi...*  
Controllato  
da .....



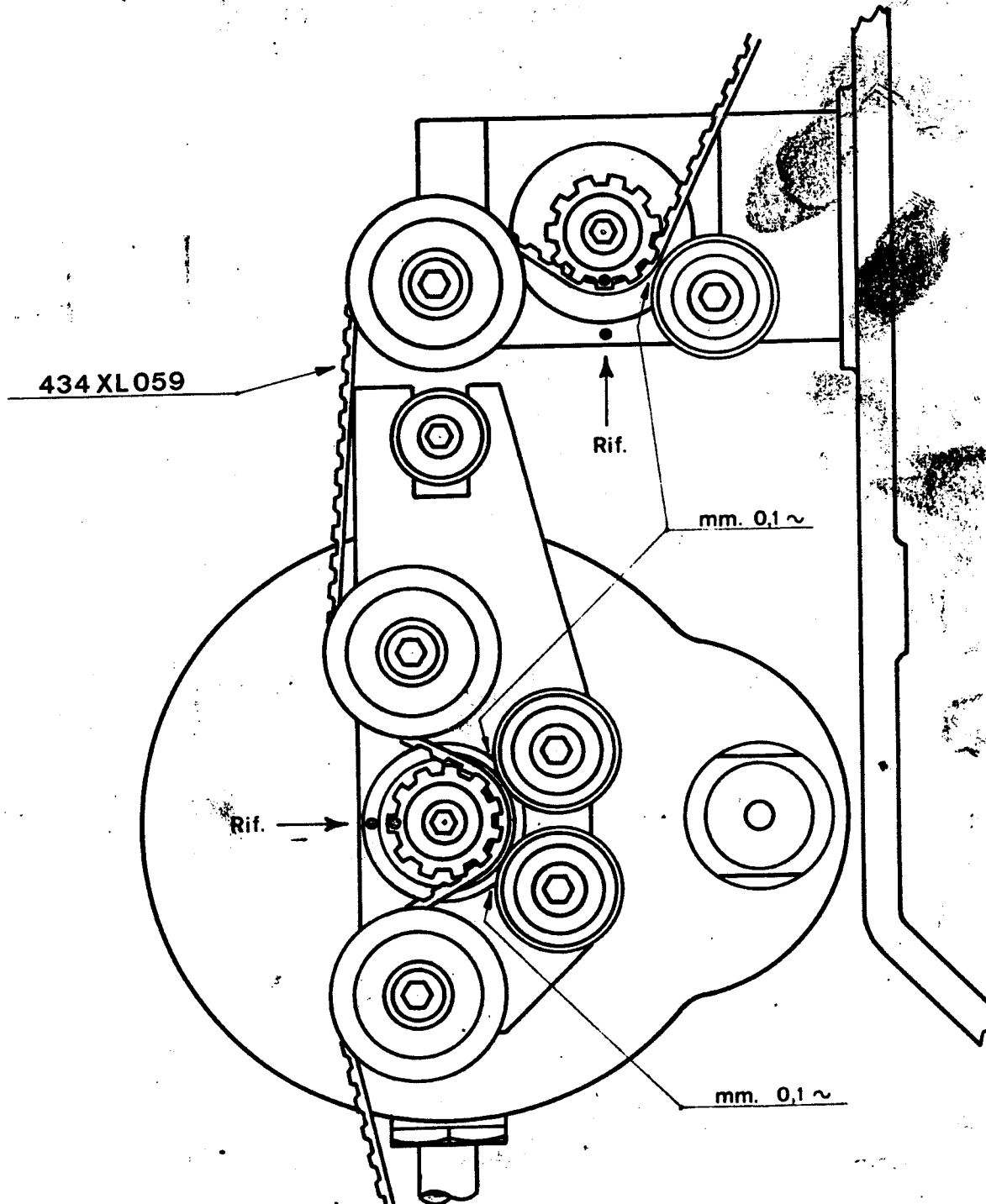
VICTORIA 5

Messa in fase proiettore - Shutter phasing

7478

Data 3-10-75

Modifiche



RIFERIMENTO FASE

In caso di cambio della cinghia assicurarsi che i punti di riferimento segnati in rosso coincidano e che il tratto di cinghia fra i due pignoni sia ben teso.

PHASE REFERENCE

When belt is replaced make shure to have the reference points facing each other with belt well tight.

Disegnato da  
Controllato da



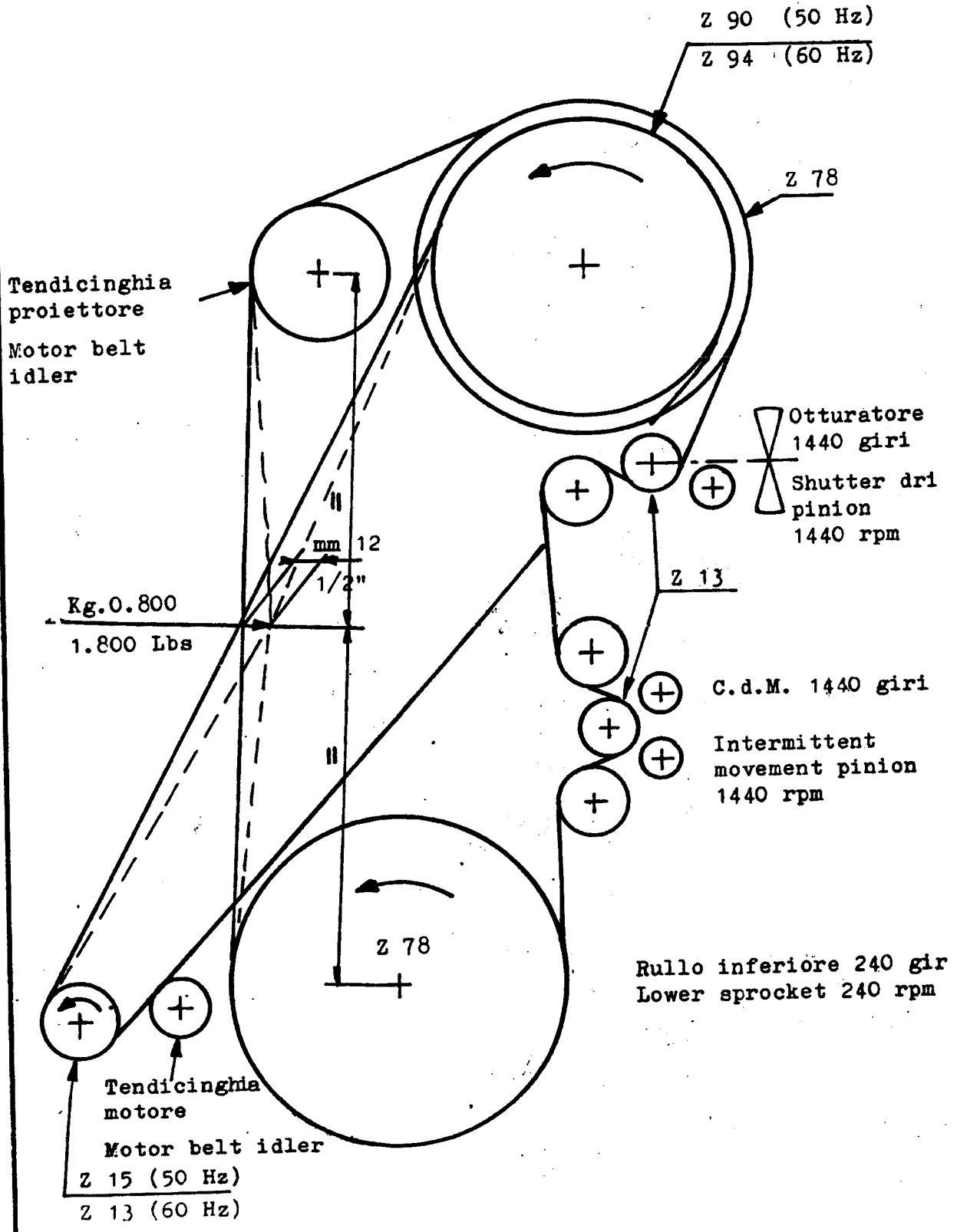
VICTORIA 5

Ruotismi e tensione cinghie  
Toothed pulleys and belts

7499

Dal N° 3500

Data 23-12-75  
Modifiche



Disegnato  
da *Luigi*  
Controllato  
da



Victoria 9 - 5 - 35 mm - PROIETTORE

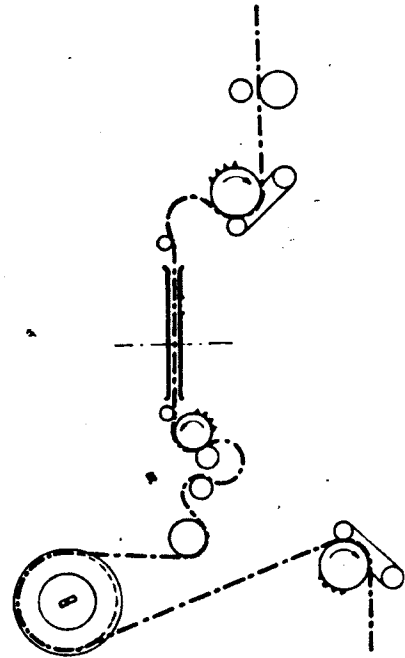
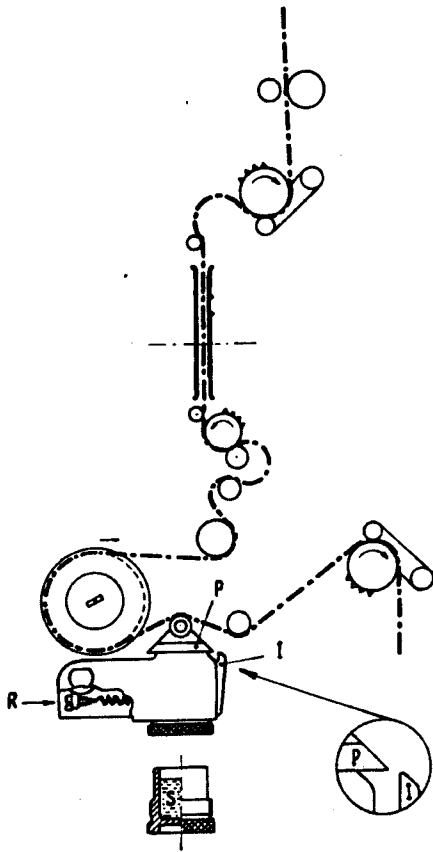
Percorso film - Parcours film - Film threadings

744C

Data 15-1-75

Modifiche

Con compensatore idraulico  
Avec compensateur hydrauliques  
With dash pot



**RIEMPIMENTO** - Svitare il bicchierino, riempirlo di liquido S sino ad un centimetro dal bordo e riavvitarlo in sede.

**REGOLAZIONE** - Montare il film e mettere in moto il proiettore, ruotare la vite R sino a che il bordo inferiore di P coincida con l'indice I.

**REMPLISSAGE** - Dévisser le godet, et le remplir de liquide S jusqu'à 1 cm. du bord supérieur.

**REGLAGE** - Une fois le film monté et avec le projecteur en marche, tourner la vis R jusqu'à ce que le bord inférieur du support P vienne à coïncider avec l'index I.

**FILLING** - Unscrew the pot. fill it with fluid " type S " till 1" from the rim then but back in.

**DASH POT ADJUSTMENT** - Thread the film and, while the mechanism is running, rotate the screw R until the bottom edge of P corresponds to the pointer I.



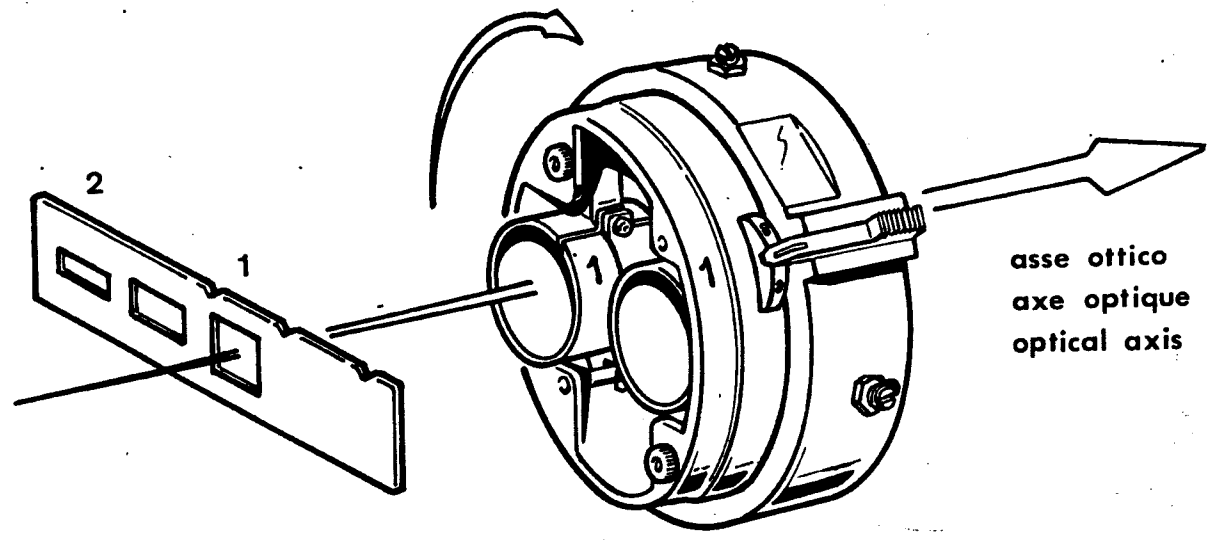
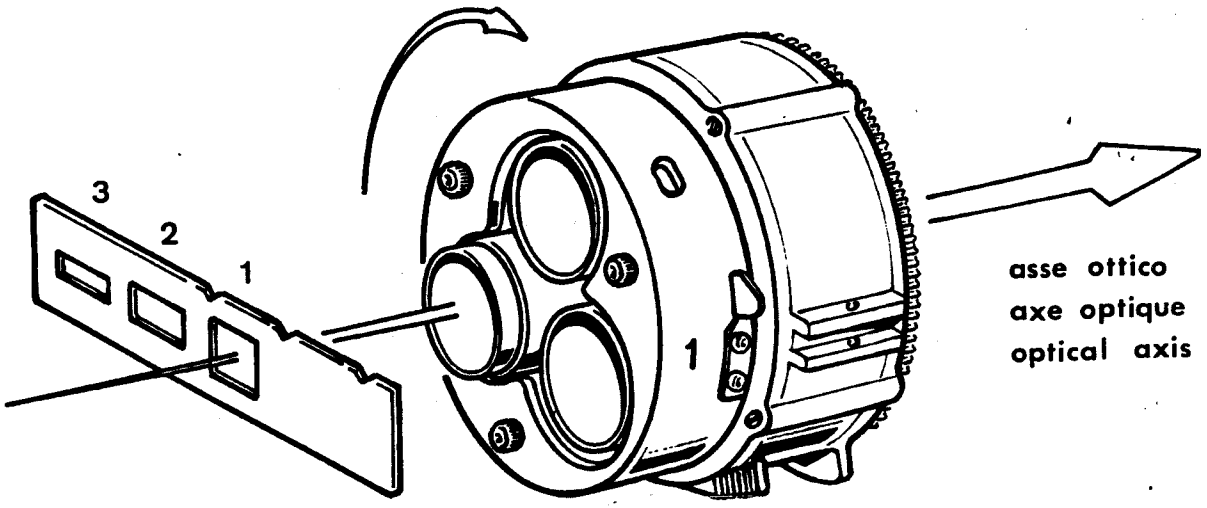
Disegnato  
da *Fuggiano*  
Controllato  
da



Posizione quadruccio rispetto all'obbiettivo  
Aperture to lens holder initial coupling  
Couplage tourelle caches

7674

Data 26-5-77  
Modifiche



**LEGEND**

- AL - Exciter lamp supply unit
- CA - Projector starter
- IE - Exciter lamp switch
- IF - Framing lamp switch
- M3 - Centrifugal c/o switch
- M5 - Change over solenoid switch
- M6 - Sound switch
- P3 - C/o start push button
- P4 - C/o stop push button
- SE - Change over solenoid

