

Film-Tech

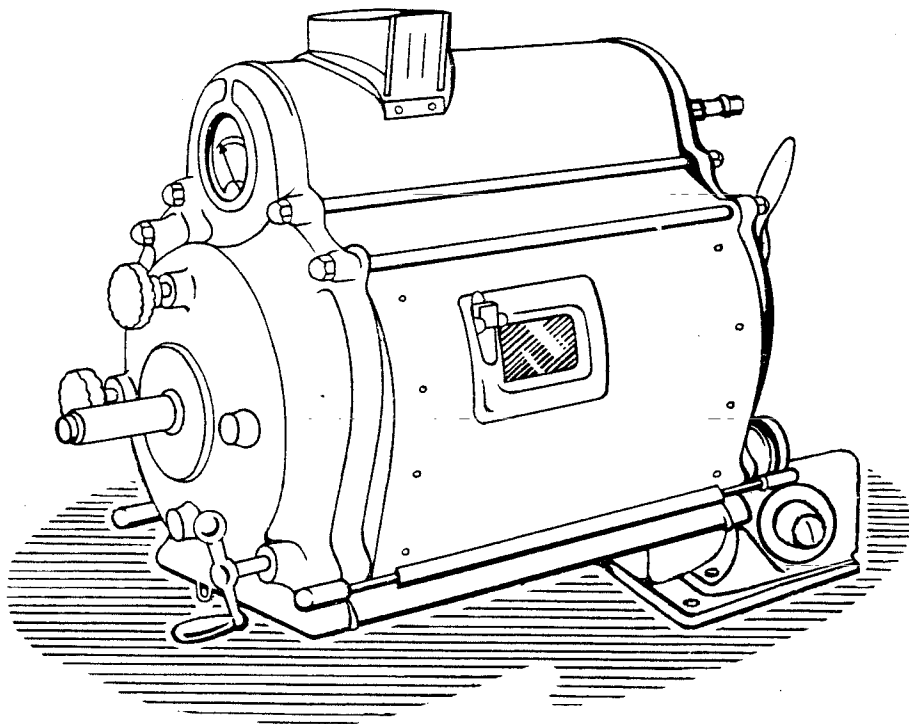
The information contained in this Adobe Acrobat pdf file is provided at your own risk and good judgment.

These manuals are designed to facilitate the exchange of information related to cinema projection and film handling, with no warranties nor obligations from the authors, for qualified field service engineers.

If you are not a qualified technician, please make no adjustments to anything you may read about in these Adobe manual downloads

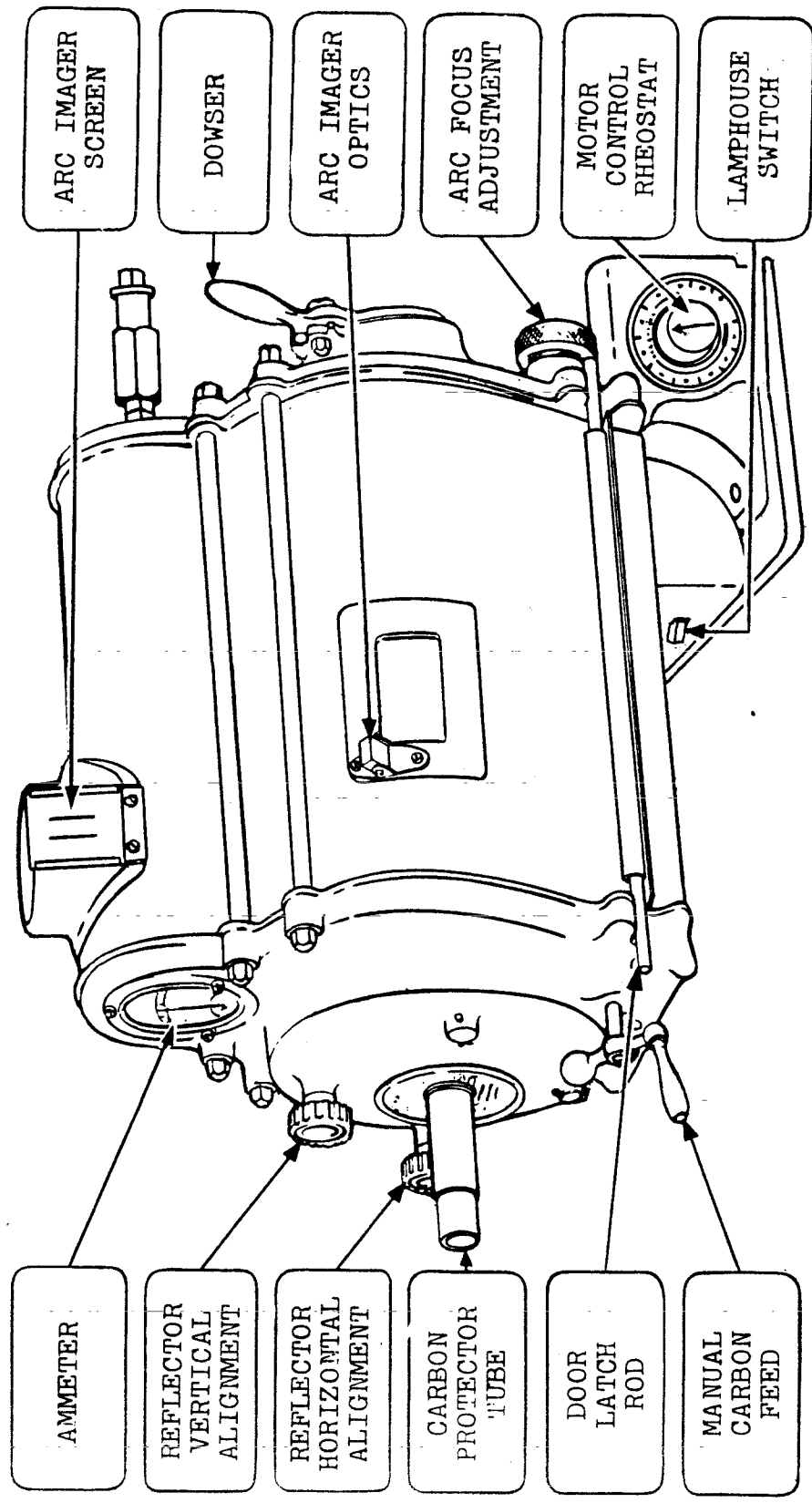
www.film-tech.com

THE STRONG "PORTABLE" LOW INTENSITY
PROJECTION ARC LAMP
TYPE 5400

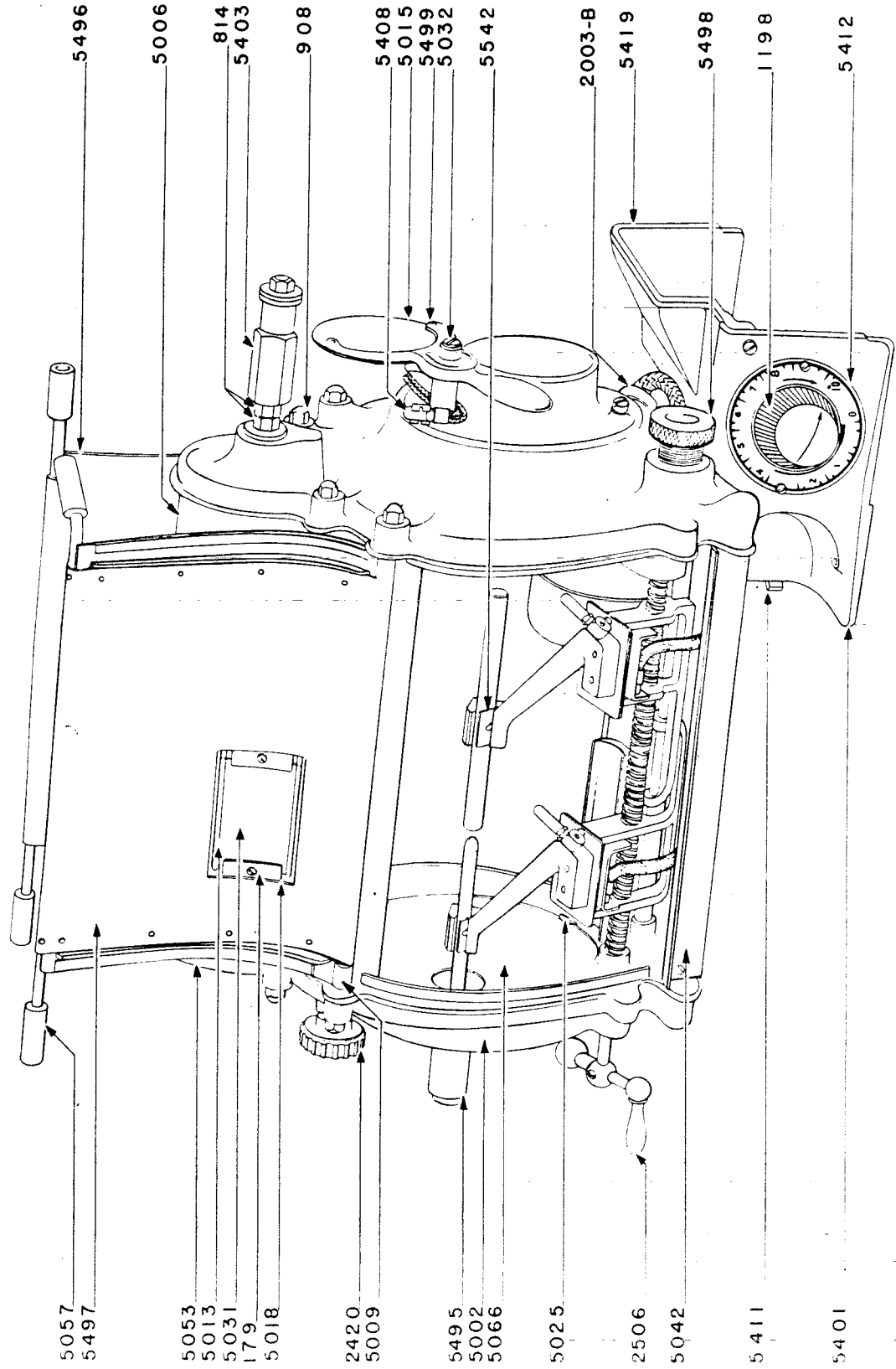


THE STRONG ELECTRIC CORP.
37 CITY PARK AVE., TOLEDO 2, OHIO

**STRONG PORTABLE
PROJECTION ARC LAMP**

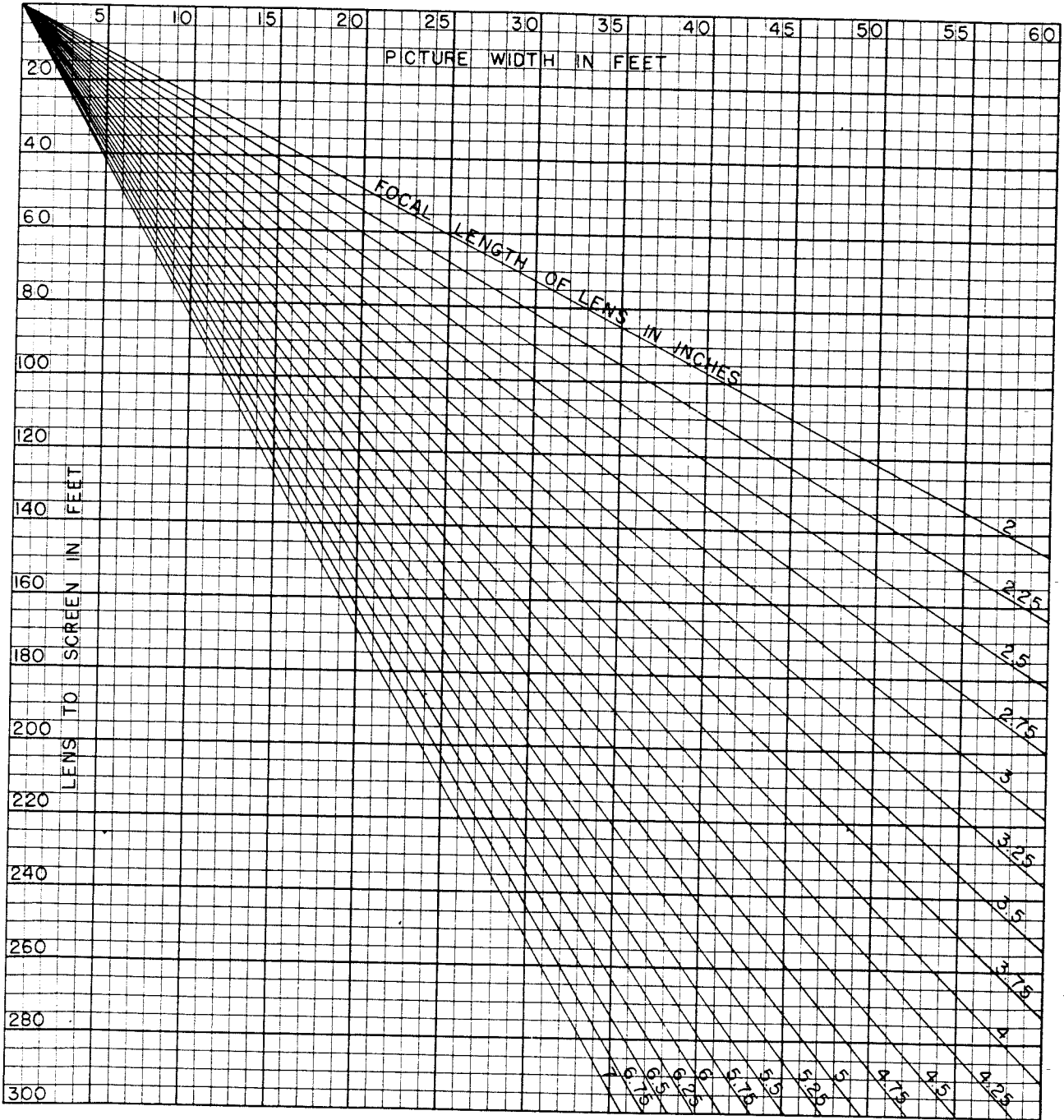


STRONG PORTABLE
PROJECTION ARC LAMP

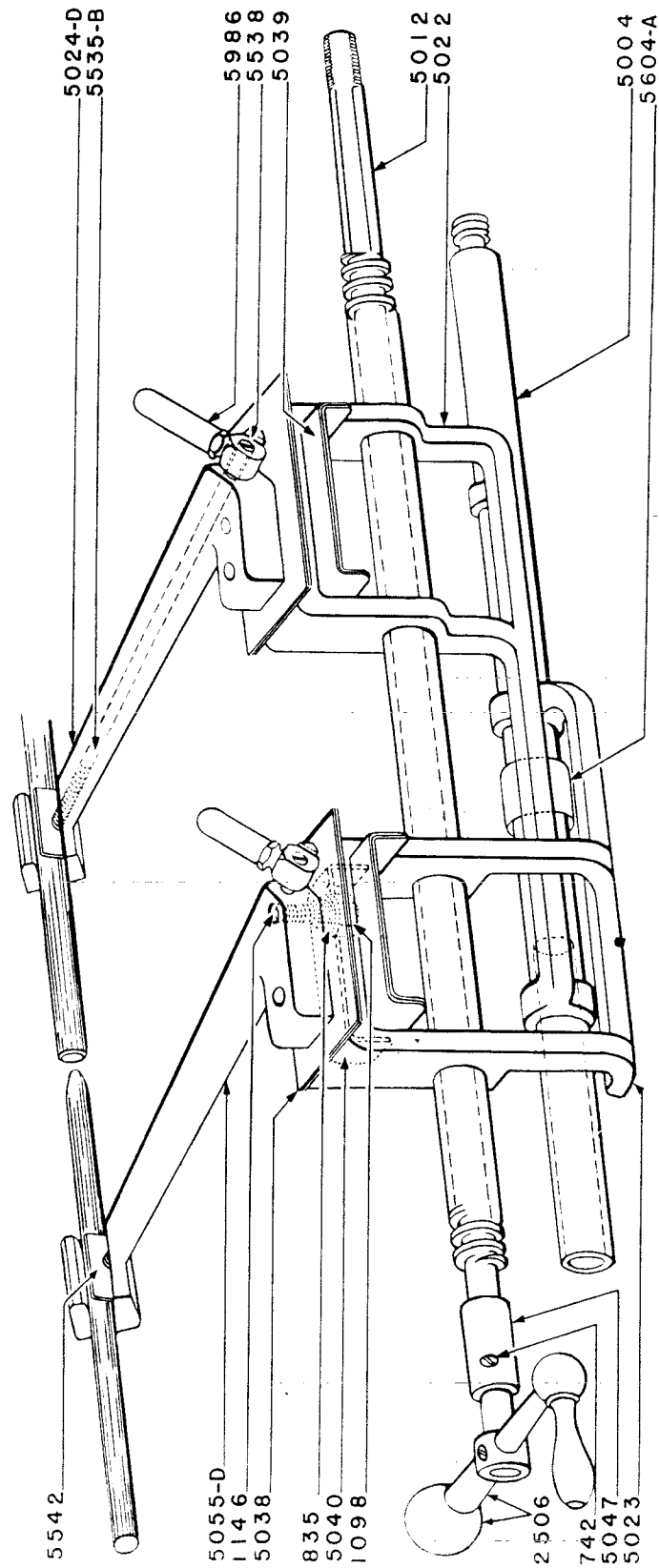


- 5057
- 5497
- 5053
- 5013
- 5031
- 179
- 5018
- 2420
- 5009
- 5495
- 5002
- 5066
- 5025
- 2506
- 5042
- 5411
- 5401
- 5496
- 5006
- 814
- 5403
- 908
- 5408
- 5015
- 5499
- 5032
- 5542
- 2003-B
- 5419
- 5498
- 1198
- 5412

PROJECTION TABLE
FOR .825 X .600 APERTURE



STRONG PORTABLE
PROJECTION ARC LAMP



DECIMALS OF AN INCH
FOR EACH 64TH
WITH MILLIMETER EQUIVALENTS

Frac- tion	$\frac{1}{64}$ ths	Decimal	Milli- meters
	1	.015625	0.397
$\frac{1}{32}$	2	.03125	0.794
	3	.046875	1.191
$\frac{1}{16}$	4	.0625	1.588
	5	.078125	1.984
$\frac{3}{32}$	6	.09375	2.381
	7	.109375	2.778
$\frac{1}{8}$	8	.125	3.175
	9	.140625	3.572
$\frac{5}{32}$	10	.15625	3.969
	11	.171875	4.366
$\frac{3}{16}$	12	.1875	4.763
	13	.203125	5.159
$\frac{7}{32}$	14	.21875	5.556
	15	.234375	5.953
$\frac{1}{4}$	16	.250	6.350
	17	.265625	6.747
$\frac{9}{32}$	18	.28125	7.144
	19	.296875	7.541
$\frac{5}{16}$	20	.3125	7.938
	21	.328125	8.334
$\frac{11}{32}$	22	.34375	8.731
	23	.359375	9.128
$\frac{3}{8}$	24	.375	9.525
	25	.390625	9.922
$\frac{13}{32}$	26	.40625	10.319
	27	.421875	10.716
$\frac{7}{16}$	28	.4375	11.113
	29	.453125	11.509
$\frac{15}{32}$	30	.46875	11.906
	31	.484375	12.303
$\frac{1}{2}$	32	.500	12.700

Frac- tion	$\frac{1}{64}$ ths	Decimal	Milli- meters
	33	.515625	13.097
$\frac{17}{32}$	34	.53125	13.494
	35	.546875	13.891
$\frac{9}{16}$	36	.5625	14.288
	37	.578125	14.684
$\frac{19}{32}$	38	.59375	15.081
	39	.609375	15.478
$\frac{5}{8}$	40	.625	15.875
	41	.640625	16.272
$\frac{21}{32}$	42	.65625	16.669
	43	.671875	17.066
$\frac{11}{16}$	44	.6875	17.463
	45	.703125	17.859
$\frac{23}{32}$	46	.71875	18.256
	47	.734375	18.653
$\frac{3}{4}$	48	.750	19.050
	49	.765625	19.447
$\frac{25}{32}$	50	.78125	19.844
	51	.796875	20.241
$\frac{13}{16}$	52	.8125	20.638
	53	.828125	21.034
$\frac{27}{32}$	54	.84375	21.431
	55	.859375	21.828
$\frac{7}{8}$	56	.875	22.225
	57	.890625	22.622
$\frac{29}{32}$	58	.90625	23.019
	59	.921875	23.416
$\frac{15}{16}$	60	.9375	23.813
	61	.953125	24.209
$\frac{31}{32}$	62	.96875	24.606
	63	.984375	25.003
1	64	1.000	25.400

STRONG PORTABLE
PROJECTION ARC LAMP

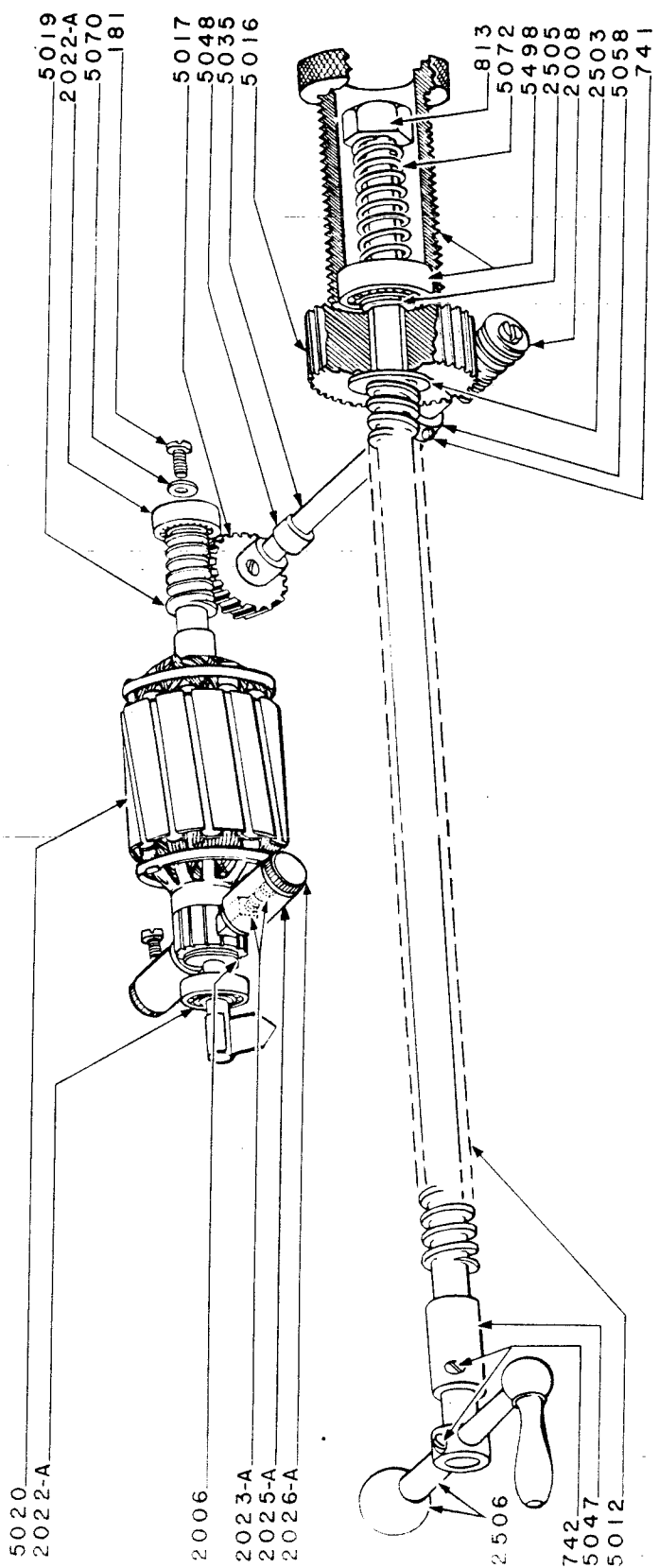


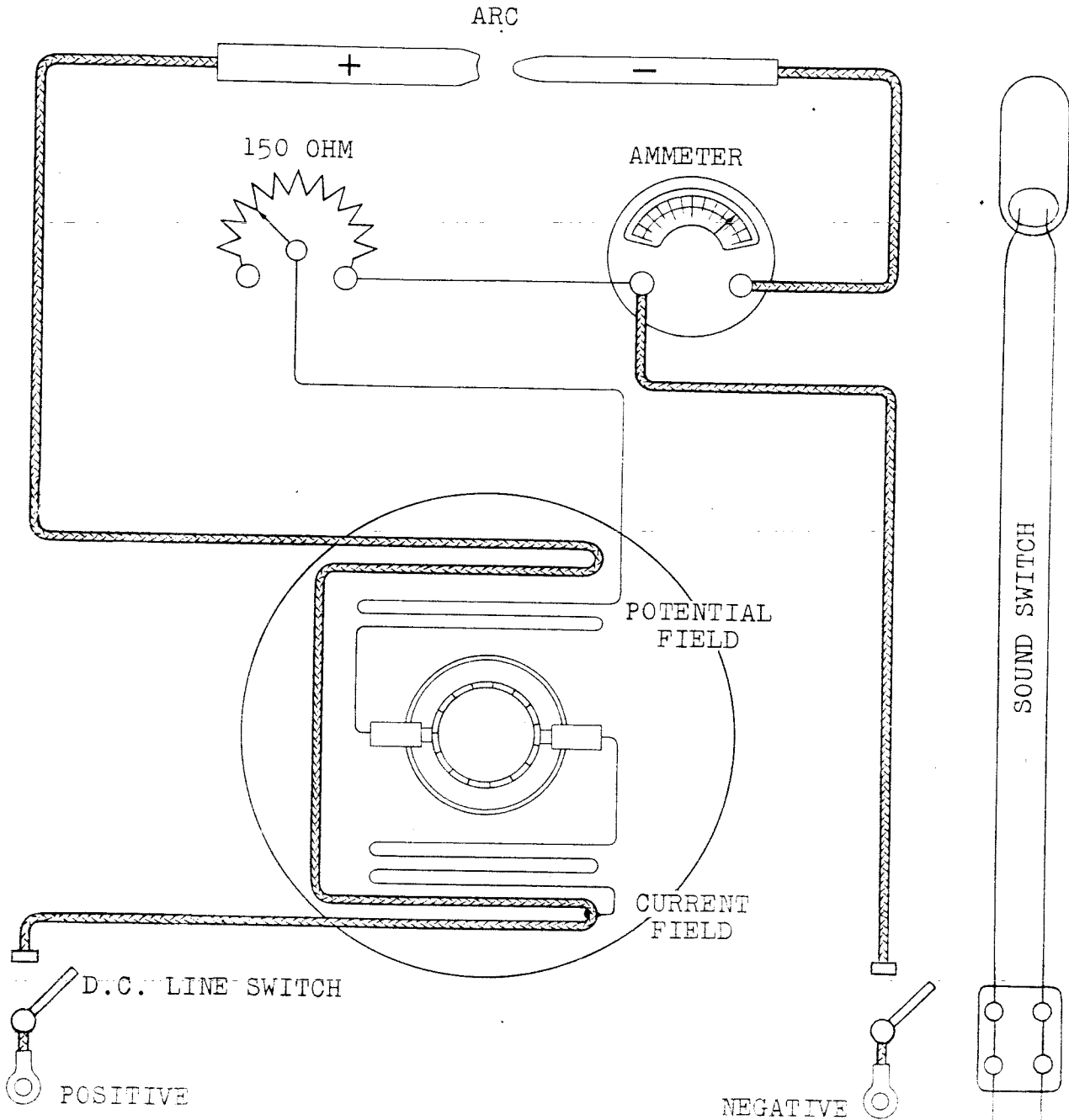
Plate 71

126 Screw (4-36 x 1/8" Fil. Hd.) (Arc Imager Mirror)
176 Screw (6-32 x 3/16" Fil. Hd.) (Ammeter)
179 Screw (6-32 x 1/4" Fil. Hd.)
180 Screw (6-32 x 5/16" Fil. Hd.) (Lamphouse Switch)
181 Screw (6-32 x 3/8" Fil. Hd.)
253 Screw (8-32 x 3/16" Fil. Hd.) (Name Plate)
255 Screw (8-32 x 5/16" Fil. Hd.) (Brush Holder)
256 Screw (8-32 x 3/8" Fil. Hd.) (Rheostat Plate)
277 Screw (8-32 x 1/2" Oval Hd.) (Vent Stack)
292 Screw (8-32 x 1/8" Fil. Hd.) (Mercury Switch)
390 Screw (10-32 x 3/4" Fil. Hd.) (Terminal Block)
712 Screw (8-32 x 1/4" Headless Cup Pt.) (Ref. Adj. Knob)
741 Screw (1/4-28 x 1/4" Headless Cup Pt.)
742 Screw (1/4-28 x 1/4" Headless Dog Pt.)
795 Nut (8-32 Hex.) (Vent Stack)
798 Nut (10-32 Hex.) (Terminal Block)
813 Nut (5/16-24 Hex.)
814 Nut (3/8-24 Hex.)
827 Washer (#6 x 5/16") (Armature Shaft)
835 Washer (1/4-9/16" Brass)
854 Washer (S.A.E.) (Turnbuckle)
862 Washer (1" x 7/16" x 5/64") (Turnbuckle)
908 Nut (1/4-20 Acorn)
919 Pin (1/16 x 1/2" Cotter) (#5542 Plate)
929 Pin (#00000 Taper)
1020 Imager Frame
1029 Imager Bracket
1098 Lava Rock Bushing
1146 Screw (1/4-20 x 3/4" Hex. Hd. Cap)
1198 Rheostat Knob
1250 Asbestos Disc
1254 Wire Terminal
1954 Mirror Block Assembly
1972 Arc Imager Assembly
2003-B Porcelain Bushing
2006 Washer (1/64" Thick Fibre)
2006-A Washer (1/32" Thick Fibre)
2008 Worm
2020-A Motor Field Assembly
2022-A Motor Ball Bearing
2023-A Motor Brush & Spring (Soft)
2025-A Brush Holder Body
2026-A Brush Holder Cap
2028 Motor End Bell
2029 Motor Inspection Plate
2030 Motor Inspection Plate Screw
2311 Reflector Adjusting Spring
2420 Reflector Adjusting Knob

2503 "D" Washer (Large)
2505 "D" Washer (Small)
2506 Ball Crank Assembly
2621 Wire Clip
2703 Dowser Catch
5002 Back Casting
5004 Slide Rod
5005 Top Baffle Plate
5006 Top Sheet Metal
5009 Hinge Rod
5010 Vent Stack
5012 Lead Screw
5013 Window Frame (Right Hand)
5013-A Window Frame (Left Hand)
5015 Dowser Plate
5016 Worm Gear (Lead Screw)
5017 Worm Gear (Countershaft)
5018 Window Clip
5019 Worm (Armature)
5020-A Armature
5022 Positive Carriage
5023 Negative Carriage
5024-D Positive Carbon Arm (10m.m.)
5025 Reflector Clip
5026 Adjusting Screw (Reflector)
5027 Field Mounting Screw (Short)
5028 Field Mounting Screw (Long)
5031 Window Glass
5032 Dowser Handle Screw
5034 Carbon Locator
5035 Worm Shaft
5036 Reflector Clamp and Spring
5037 Heat Shield
5038 Mica Insulation (Top)
5039 Mica Insulation (Bottom)
5040 Insulation Clamp
5042 Base Pan
5045 Wire Terminal
5047 Lead Screw Bushing
5048 Worm Shaft Bushing
5049 Base Pan Screw
5051 Motor Speed Indicator
5053 Ammeter
5055-D Negative Carbon Arm Body (7m.m.)
5057 Handle (Latch Rod)
5058 Worm Shaft Set Collar
5063 Oil Cup
5065 Ash Pan

5066 Reflector (6 5/8" Dia. Spec. #2)
 5070 Washer
 5071 Wrench (Jaws)
 5072 Clutch Tension Spring
 5073-B Polarized Cap with Strain Relief
 5075 Jaw Aligning Gauge
 5082 Wire (Negative Jaw to Meter)
 5085 Set Screw (Lead Screw Bushing)
 5088 Arc Imager Screen
 5401 Front Casting
 5402 Terminal Block
 5403 Lamphouse Turnbuckle
 5404 Dowser Set Collar
 5405 Dowser Shaft
 5406 Lamp to Projector Screw
 5407 Terminal Block Cover Plate
 5408 Mercury Switch
 5409 Mercury Switch Support Clip
 5410 Connecting Screw
 5411 Lamphouse Switch
 5412 Control Rheostat (Ohmite 150 Ohm)
 5413 Wire (Positive Jaw to Motor)
 5414 Wire (Meter to Lamphouse Switch)
 5415 Feed Cable (8 Ft. #12-2 L.C.C.)
 5417 Wire (Rheostat to Lamphouse Switch)
 5418 Front Casting Insulation
 5419 Draft Protector Casting
 5442 Dowser and Shaft Assembly
 5445 Control Motor Assembly
 5485 Reflector Frame
 5491 Top Sheet Metal (Inner)
 5494 Wire (Negative Jaw to Meter)
 5495 Name Plate and Tube Assembly
 5496 Left Door Assembly
 5497 Right Door Assembly
 5498 Focus Adjusting Knob Assembly
 5499 Dowser and Handle Assembly
 5532 Terminal Wire Clip (Positive)
 5533 Terminal Wire Clip (Negative)
 5535-B Carbon Arm Plunger
 5538 Carbon Arm Nut
 5542 Carbon Arm Clamp Plate
 5604-A Spacer (Lead Screw)
 5986 Carbon Grip Handle Assembly
 5998-D Negative Jaw Assembly (7m.m.)
 5999-D Positive Jaw Assembly (10m.m.)
 11119 Wire Clip
 14114 Rheostat Name Plate

WIRING DIAGRAM
NUMBER 109



PARTS LIST

All the prices are quoted f.o.b. Toledo and are subject to change without notice.

When ordering parts be sure to advise the serial numbers and the model of lamps in addition to the name of the parts wanted and how shipment is to be made.

There will be a minimum charge of one dollar on any one invoice and a service charge sufficient to cover the cost of handling on all merchandise returned to us for credit.

Strong products are regularly inspected and tested at the Underwriters' Laboratories and each listed product bears an Underwriters' re-examination service marker, an indication of compliance with all of their requirements.