

Film-Tech

The information contained in this Adobe Acrobat pdf file is provided at your own risk and good judgment.

These manuals are designed to facilitate the exchange of information related to cinema projection and film handling, with no warranties nor obligations from the authors, for qualified field service engineers.

If you are not a qualified technician, please make no adjustments to anything you may read about in these Adobe manual downloads

www.film-tech.com

DISPOSITIVO FRENANTE PER CNR 3-35 CNR 5-35 CNR 3 70/35 CNR 5 70/35

Durante lo smontaggio del film può essere sentita la necessità di svolgere tale operazione il più celermente possibile; da qui la necessità di un nuovo dispositivo frenante (Fig.1,2) comandato dalla tavola di montaggio in grado di arrestare il piatto in poco più di un giro.

Il freno, che in condizione di non uso può essere agganciato alla tavola di montaggio (Fig.3), è costruito come una unità a sé stante in grado quindi di essere impiegata con il piatto che di volta in volta contiene la copia del film che deve essere smontata.

L'alimentazione del dispositivo è realizzata con un cavo derivante dal circuito elettrico della tavola di montaggio e con piccole modifiche tutto il sistema può essere impiegato anche sui dispositivi CNR già in uso presso i clienti (specificare tensione e periodi).

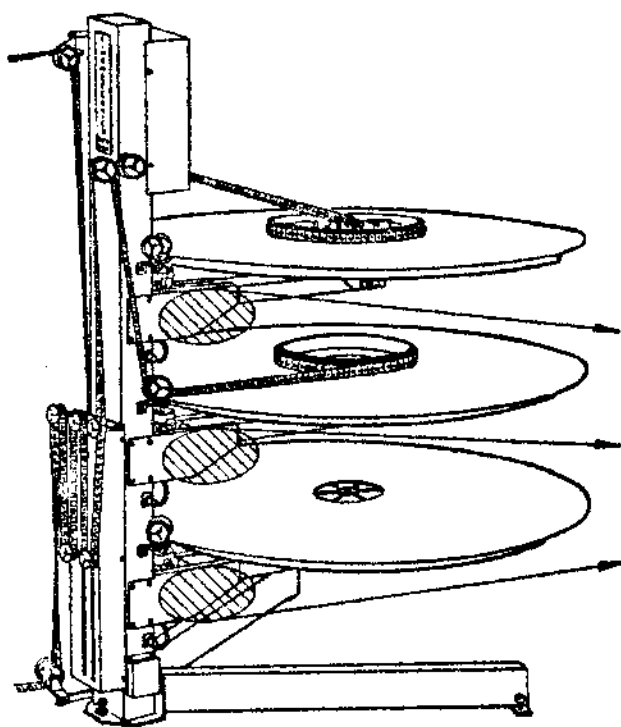


FIG. 1

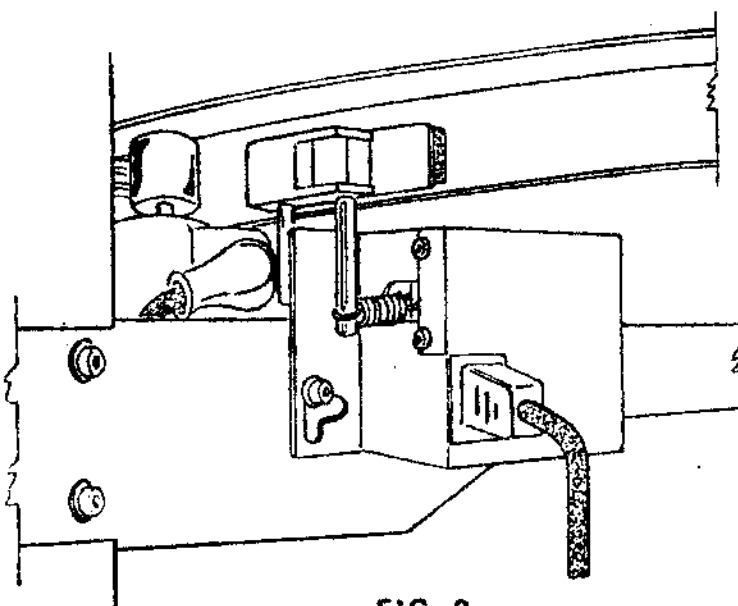
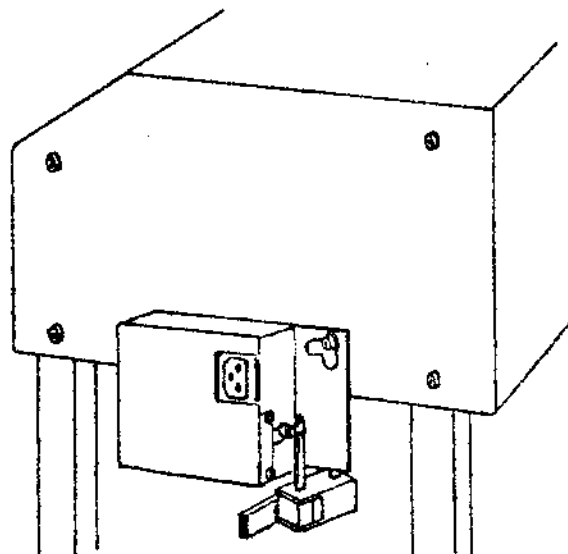


FIG. 2



PLATTER BRAKE FOR CNR 3-35 CNR 5-35 CNR 3-70/35 CNR 5-70/35

During film brake down, it may be necessary to operate as quickly as possible. For this reason, we have developed an electrical brake (Fig.1,2) controlled by the make up table, which can brake the platter in just more than one revolution.

This unit, while not in use, hangs on the make up table (Fig.3) and can be fitted to the appropriate platter of the three.

The supply of the brake unit is obtained by a cable coming from the make up table.

With small modifications, the brake can also be fitted on platters already in the field (voltage and frequency to be specified).

DISPOSITIF DE FREINAGE POUR CNR 3-35 CNR 5-35 CNR 3-70/35 CNR 5-70/35

Pendant le démontage du film on désire faire cette opération le plus rapidement possible, d'où la nécessité de créer un nouveau dispositif de freinage (Fig.1,2) commandé par la table de montage, et qui est en mesure d'arrêter le plateau en un tour juste.

Le frein qui, lorsqu'il n'est pas utilisé peut être accroché à la table de montage (Fig.3), a été construit de façon à pouvoir être employé avec n'importe quel plateau contenant la copie du film à démonter.

Le dispositif est alimenté par un câble provenant du circuit électrique de la table de montage.

Avec de petites modifications, le système de freinage peut aussi être utilisé sur les dispositifs CNR déjà en fonction auprès des clients (préciser tension et périodes).



CNR 3-35 NON REWIND FILM SYSTEM INSTRUCTIONS

=====

The CNR 3-35 is a film transport system with horizontal platters. It operates as a demand system and does not need film rewind.

The platters have a film capacity of 7,800 metres (25,000 feet).

The film is fed to the projector through a center pay-out unit, and is taken up on a take-up ring.

The film tension is kept constant by a weight on the buffer unit, which is located on the main mast.

The platter speed is controlled by an electronic circuit, and each platter is totally independent in operation.

Non rewind system means:

- 1) To do away with the rewind process.
- 2) To increase the uninterrupted projection time without modifying the projector.

The film as taken up on one platter is ready for projection. The pay-out center unit is inserted. The film is taken through it, threaded through the projector and then taken to the take-up ring.

As the projector starts, the buffer detects the film motion and starts the take up platter itself.

The pay-out unit too detects the film motion and starts the pay-out platter.

As soon as the performance is over, the film is ready to be rethreaded with the functions of the platters inverted.

System packing:

The complete system inclusive of make up table (if supplied) is shipped in two cases whose weights and dimensions are:

case A) 2000x1200x470mm	180 Kilos
case B) 1400x1400x370mm	105 Kilos

In case A) is shipped the main mast with two legs, make up table (if supplied), accessories, pay-out unit/units, take up rings.



In case B) are shipped the three platters.

The cases are to be opened with the nail puller and should be moved without turning them upside down.

Installation:

Open case A) first, removing the upper cover and then one of the two sides.

Take out the make up table (if supplied), all accessories and the two legs. Free the main mast, lift it carefully and rest it on the floor as shown on the figure No. 1

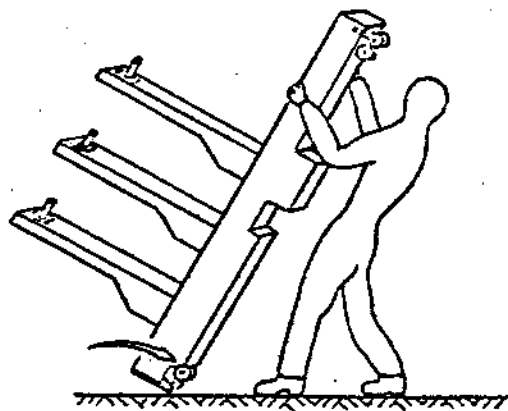


Fig. 1

making sure not to damage the roller pointed by the arrow.

With the help of another person, bolt the legs to the mast by means of the eight Allen screws, which are shipped mounted at the bottom of the mast and on the legs.

Lock the screws, stand up the mast in its final working position. If the mast is not aligned with the projector, swivel rollers are necessary to guide the film.

Working on the levelling screws, try to make the platter arms perfectly horizontal.

Open case B) by first loosening the outside bolt and then pulling the nails from the cover. The platters should appear with the black surface looking outside.



Make sure that the platter driving wheels (a metal wheel with ring) are in the disengaged position (see figure No. 2). If not, disengage them with the lever (Fig. No. 3).

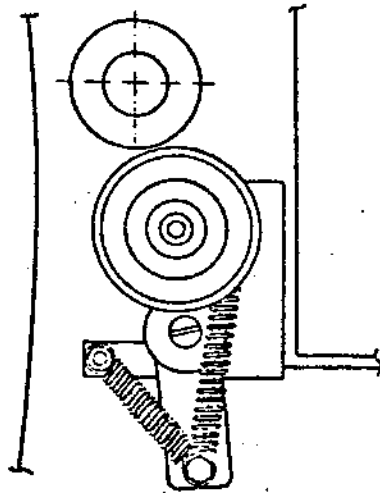


Fig. 2

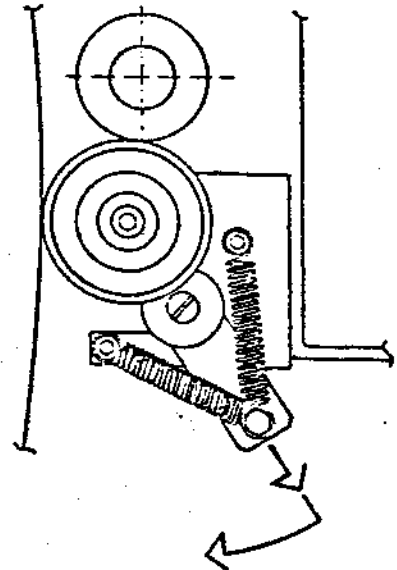


Fig. 3

Locate the platters on the spindles starting with the lowest one.

Take out the cover of the terminal card at the bottom of the mast.

Connect the mains supply. The lights under platters No. 1 and 2 should be on. At this point the system is ready to operate.

Film make up:

Connect the make up table cable (with female XLR connector) to the connector relevant to the platter on which the film is to be made up.

Connect the mains to the table by inserting the plug into the socket on the inside of the main mast; turn on the mains switch of the table (as it is turned on, the connected platter is going to turn one fourth of a revolution due to the fact that the speed control circuit is now energized). Move the switch on "Make up" position.

Make up part No. 1 from the beginning. If received with the tail outside, reverse it on a film rewriter.



The film path is shown on the drawing according if the film is to be made up on platter No. 1, 2, 3. The film is to be made up on the platter with the gelatin inside.

The make up table can be put anywhere near the platter.

The make up speed is controlled by the potentiometer on the table.

During the make up process, try to reduce to the minimum the distance between the make up table and the platter to avoid a non-uniform make up due to the film elasticity.

Speed adjustment:

The system is completely adjusted at the factory. If further adjustment is necessary in the projection room, follow this procedure:

A) Pay-out function:

Insert the pay-out unit on the uppermost platter. Moving the speed control arm for the first 5 degrees, the platter should not move.

With the speed control arm at the end run, the platter should make 38±42 revolutions per minute. To obtain this speed, loosen slightly the screw which locks the control arm to the potentiometer spindle, and turn with a screwdriver the pot spindle until the required speed is obtained.

If in this first step the required maximum speed cannot be obtained, adjust the trimmer on the printed circuit card first.

Then tighten again the locking screw.

Now take the pay-out unit on the second platter and without touching the control pot, adjust the trimmer on the printed circuit card to obtain the same required speed.

Do the same for the third platter.

If two or more pay-out units are supplied, as soon as the outlined procedure is finished, insert the second pay out unit on the first platter, adjust the potentiometer.



The pay-out unit will be automatically adjusted for the three platters.

B) Take up function:

Turn the switch to take up position. The platter should not move when the sliding rollers of the buffer, located on the mast, are at 150mm (6") from the bottom position. If this is not so, take out the buffer cover, loosen the two nuts which connect the pot spindle and rotate the pot until the platter just stops in the indicated position.

Projection:

Insert the pay-out unit on the platter where the film has been made up and take away the take up ring.

Turn on the card by means of the switch.

Turn the switch to the pay-out position, thread the film through the rollers of the pay-out unit as shown in the drawing and thread it through the projector.



After coming out of the projector, thread the film through the film buffer and take it to the centre of the take up platter. Check the film path, turn the switch of the take up platter on the take up position; turn slightly the take up platter by hand.



Immediately, the motor of the take up platter is started and turned until the film length contained by the buffer is reduced.

At this point, the system is ready to operate.

The platter is going to feed the film to the projector and to keep a constant film tension between the projector and the take up platter as soon as the projector is started.

Film break down:

Adjust the make up table rollers at the same height of the platter from which the film is to be broken down.

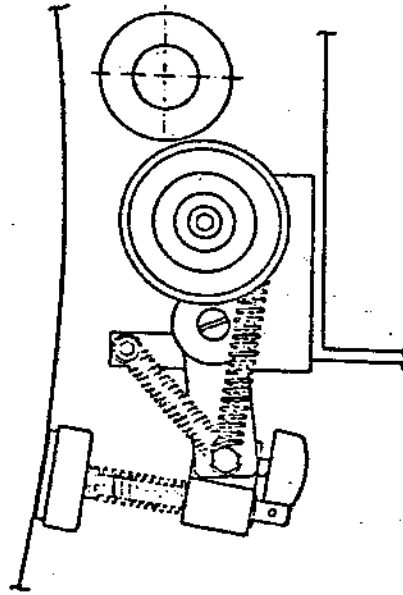


Turn the switch to the break down position. Connect the supply cable to the plug at the bottom of the mast. Switch on.

The spool shaft is going to turn about one fourth of a revolution due to the fact that the speed control circuit is now energized.

Insert the brake on the rod supplied to engage/disengage the driving wheel.

Fig. 4



Make the brake rest on the platter disengaging the driving wheel.

Thread the film as in the drawing. Turn the pot and start the break down operation.

The little felt brake is not meant to brake the platter if the film breaks, but only to generate a light tension on the film.

On the make up table the spool driver can have two positions. The first one, with the driving pin outside, is used to take down the film, driving the spool. The second one, reversing it, with the driving pin inside is used to make up the film, making the spool free to rotate on the spindle without increasing the film tension.

As the speed control of the paying out platter is independent from the speed of the make up platter, it is possible to feed from one CNR system and end up into a different CNR.



The three (or five) speed control cards, in their box on the main mast are exactly the same and therefore interchangeable.

Only the make up table card is different as the motor current values are higher.

The CNR can work both with 220/240V line and with 120V line 50/60 Hz. The only necessary modification is to shorten out with a jumper one of the two 3,3KOhm 5W resistors mounted on each card and to change the resistor value shown on the card.

Each card carries on the pull-out handle the indication of the preset operating voltage.

To operate the make up table at 120V 50/60Hz it is necessary to add a 150 VA autotransformer.

If the CNR has been supplied for a voltage greatly different from the actual line voltage it is necessary to adjust again the preset potentiometers on the cards and the potentiometers on the pay out units and on the take up buffer.

The make up table card has two trimmer pots part to set the maximum speed and the zero speed. (see Fig. 5)

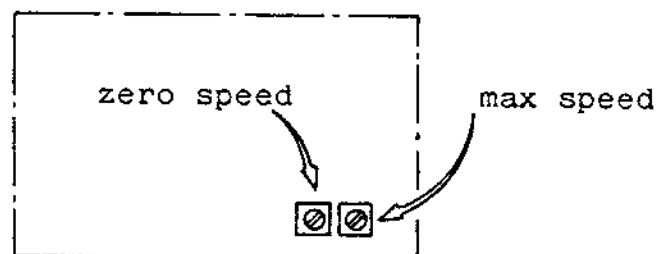


Fig. 5

Maintenance:

The required maintenance is very scarce.

Motor bearings are sealed and require no lubrication.

Motor brushes must be checked every three months.

Film rollers are made of self-lubricating plastic. No oil should be used.

It is only necessary to clean the spindle with a rag from time to time.

Platters should be periodically cleaned with water and soap.

Listino

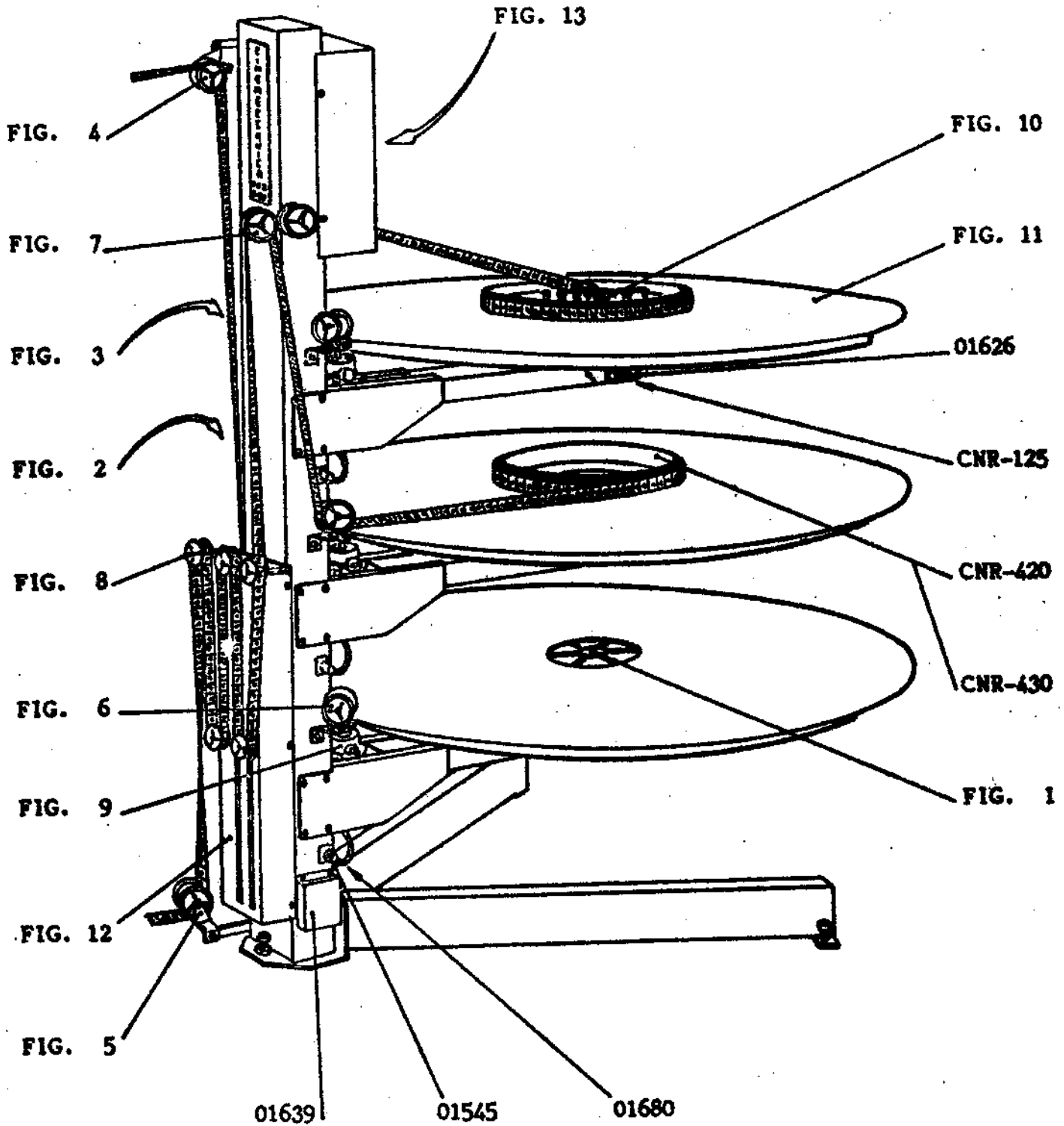
PIATTI CNR 3-35

Pezzi di ricambio
Pièces de rechange
Spare parts

Catalogue

- FIG. 1 - PLATTER SPINDLE ASSEMBLY
- FIG. 2 - FLANGED ROLLER ASSEMBLY
- FIG. 3 - FLANGED ROLLER ASSEMBLY
- FIG. 4 - UPPER FILM FEED ROLLER ASSEMBLY
- FIG. 5 - LOWER TAKE IN ROLLER ASSEMBLY
- FIG. 6 - SWIVEL ROLLER ASSEMBLY
- FIG. 7 - FILM TAKE UP UPPER ROLLERS ASSEMBLY
- FIG. 8 - FILM BUFFER FIXED ROLLERS ASSEMBLY
- FIG. 9 - MOTOR ASSEMBLY
- FIG. 10 - FILM PAY OUT ASSEMBLY
- FIG. 11 - PLATTER ASSEMBLY
- FIG. 12 - FILM TAKE UP BUFFER ASSEMBLY
- FIG. 13 - COMPLETE CONTROL BOX ASSEMBLY

- 01545 - 16A panel socket
- 01626 - 220V 3W Mignon lamp
- 01639 - 5-terminal board with label
- 01680 - 16A panel socket
- CNR-125 - Lamp holder with lamp
- CNR-420 - Complete film take up ring
- CNR-430 - Complete film take up ring with two-position pins



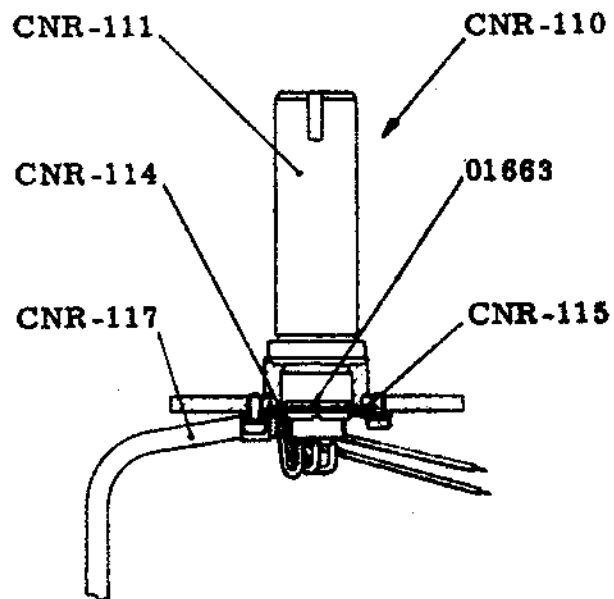


FIG. 1

FIG. 1 - PERNO SUPPORTO PIATTO COMPLETO

CNR-110	-	Perno supporto piatto completo
01663	-	Presa di pannello 6 poli
CNR-111	-	Perno supporto piatto (nudo)
CNR-114	-	Rosetta per connettore
CNR-115	-	Rosetta fissaggio connettore
CNR-117	-	Cavo connettore comando motore

FIG. 1 - AXE SUPPORT PLATEAU

CNR-110	-	Axe support de plateau
01663	-	Connecteur DIN, F6
CNR-111	-	Axe support plateau (nu)
CNR-114	-	Rondelle pour connecteur
CNR-115	-	Rondelle fixation connecteur
CNR-117	-	Cable connecteur de commande moteur

FIG. 1 - PLATTER SPINDLE ASSEMBLY

CNR-110	-	Platter spindle assembly
01663	-	6-pole socket
CNR-111	-	Platter spindle only
CNR-114	-	Connector washer
CNR-115	-	Connector locking washer
CNR-117	-	Connector cable

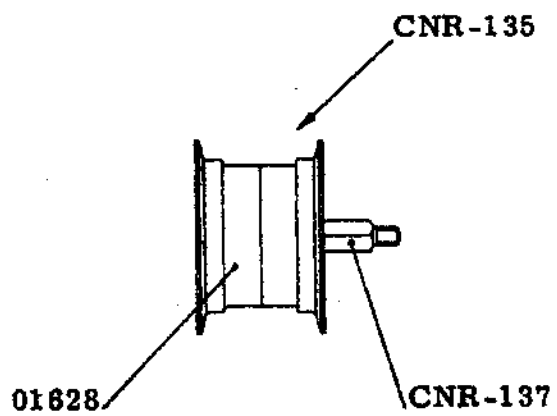


FIG. 2

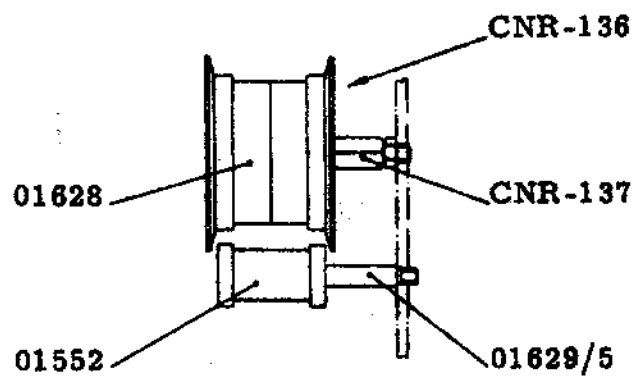


FIG. 3

FIG. 2 - RULLO CON GUIDE COMPLETO

CNR-135 - Rullo con guide completo
01628 - Rullo con guide (2 pezzi) (nudo)
CNR-137 - Perno rullo

FIG. 3 - RULLO CON GUIDE COMPLETO

CNR-136 - Rullo con guide completo di dado
01552 - Rullo piano
01628 - Rullo con guide (2 pezzi) (nudo)
01629/5 - Perno rullino piano
CNR-137 - Perno rullo

FIG. 2 - GALET GUIDE

CNR-135 - Galet guide
01628 - Galet guide (2 pièces) nu
CNR-137 - Axe galet

FIG. 3 - GALET GUIDE

CNR-136 - Galet guide
01552 - Galet plein
01628 - Galet guide (2 pièces) nu
01629/5 - Axe du galet-plein
CNR-137 - Axe galet

FIG. 2 - FLANGED ROLLER ASSEMBLY

CNR-135 - Flanged roller assembly
01628 - Flanged roller only (2 pieces)
CNR-137 - Roller spindle

FIG. 3 - FLANGED ROLLER ASSEMBLY

CNR-136 - Flanged roller with nut
01552 - Roller
01628 - Flanged roller only (2 pieces)
01629/5 - Roller spindle
CNR-137 - Roller spindle

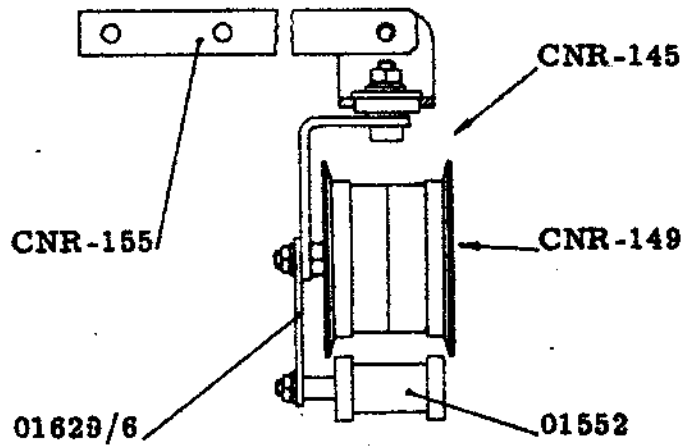


FIG. 4

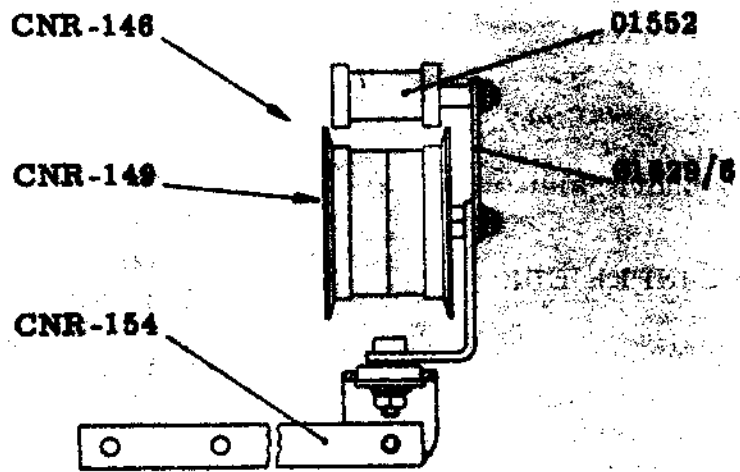


FIG. 5

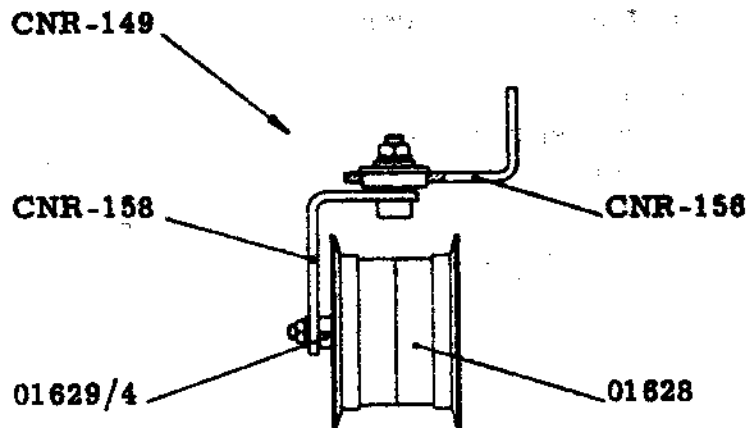


FIG. 4 - RULLO SUPERIORE COMPLETO

CNR-145 - Rullo superiore completo
 01552 - Rullino piano
 01629/6 - Piastrina con perno
 CNR-149 - Rullo mobile completo
 CNR-155 - Asta supporto rullo

FIG. 5 - RULLO INFERIORE COMPLETO

CNR-146 - Rullo inferiore completo
 01552 - Rullino piano
 01629/6 - Piastrina con perno
 CNR-149 - Rullo mobile completo
 CNR-154 - Asta supporto rullo

FIG. 4 - GALET SUPERIEUR

CNR-145 - Galet supérieur
 01552 - Galet plein
 01629/6 - Entretoise avec axe
 CNR-149 - Galet pivotant
 CNR-155 - Tige support galet

FIG. 5 - GALET INFERIEUR

CNR-146 - Galet inférieur
 01552 - Galet plein
 01629/6 - Entretoise avec axe
 CNR-149 - Galet pivotant
 CNR-154 - Tige support galet

FIG. 4 - UPPER FILM FEED ROLLER ASSEMBLY

CNR-145 - Upper film feed roller assembly
 01552 - Roller
 01629/6 - Bracket with spindle
 CNR-149 - Swivel roller assembly
 CNR-155 - Roller bracket

FIG. 5 - LOWER TAKE IN ROLLER ASSEMBLY

CNR-146 - Lower take in roller assembly
 01552 - Roller
 01629/6 - Bracket with spindle
 CNR-149 - Swivel roller assembly

FIG. 6 - RULLO MOBILE COMPLETO

CNR-149 - Rullo mobile completo
 01628 - Rullo con guide (2 pezzi) - nudo
 01629/4 - Perno rullo con guide
 CNR-156 - Squadretta con cuscinetto
 CNR-158 - Supporto rullino mobile

FIG. 6 - GALET PIVOTANT

CNR-149 - Galet pivotant
 01628 - Galet guide (2 pièces, nu)
 01629/4 - Axe galet guide
 CNR-156 - Equerre avec articulation à bille
 CNR-158 - Support galet pivotant

FIG. 6 - SWIVEL ROLLER ASSY.

CNR-149 - Swivel roller assembly
 01628 - Flanged roller only (2 pcs)
 01629/4 - Flanged roller spindle
 CNR-156 - Bracket with bearing
 CNR-158 - Swivel roller bracket

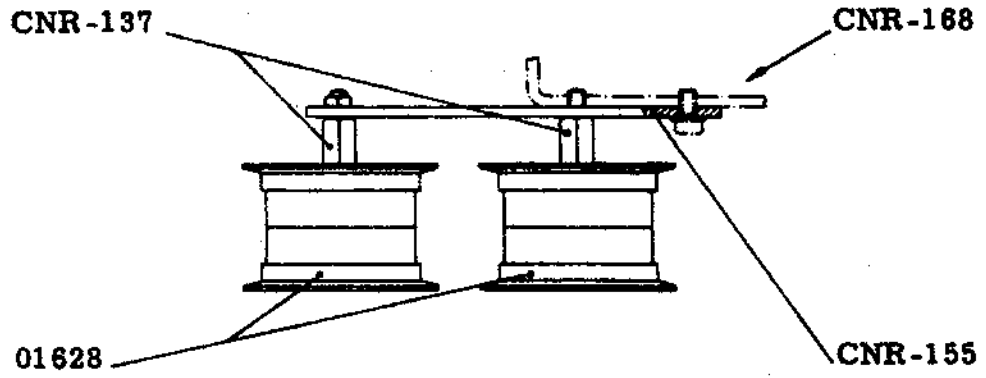


FIG. 7

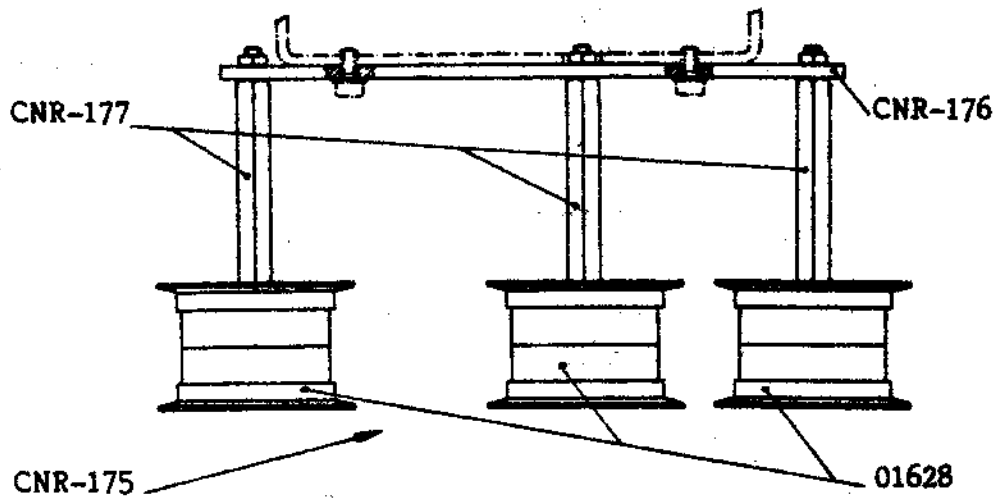


FIG. 8

FIG. 7 - RULLI ENTRATA SUPERIORE PIATTI COMPLETI

- CNR-168 - Rulli entrata superiore piatti completi
- 01628 - Rullo con guide (2 pezzi) (nudo)
- CNR-137 - Perno rulli
- CNR-155 - Asta supporto rulli

FIG. 8 - RULLI RINVIO POLMONE COMPLETI

- CNR-175 - Rulli rinvio polmone completi
- 01628 - Rullo con guide (2 pezzi) (nudo)
- CNR-176 - Asta supporto rulli
- CNR-177 - Perno rulli

FIG. 7 - GALETS D'ENTREE SUPERIEURE DES PLATEAUX

- CNR-168 - Galets d'entrée supérieure, jumelés
- 01628 - Galet guide (2 pièces, nu)
- CNR-137 - Axe galets
- CNR-155 - Tige support galets

FIG. 8 - GALETS DE RENVOI DU STABILISATEUR

- CNR-175 - Galets jumelés (entrée et sortie du stabilisateur)
- 01628 - Galet guide (2 pièces, nu)
- CNR-176 - Tige support galets
- CNR-177 - Axe galets

FIG. 7 - FILM TAKE UP UPPER ROLLERS ASSEMBLY

- CNR-168 - Film take up upper rollers assembly
- 01628 - Flanged roller only (2 pieces)
- CNR-137 - Roller spindle
- CNR-155 - Roller bracket

FIG. 8 - FILM BUFFER FIXED ROLLERS ASSEMBLY

- CNR-175 - Film buffer fixed rollers assembly
- 01628 - Flanged roller only (2 pieces)
- CNR-176 - Roller bracket
- CNR-177 - Roller spindle

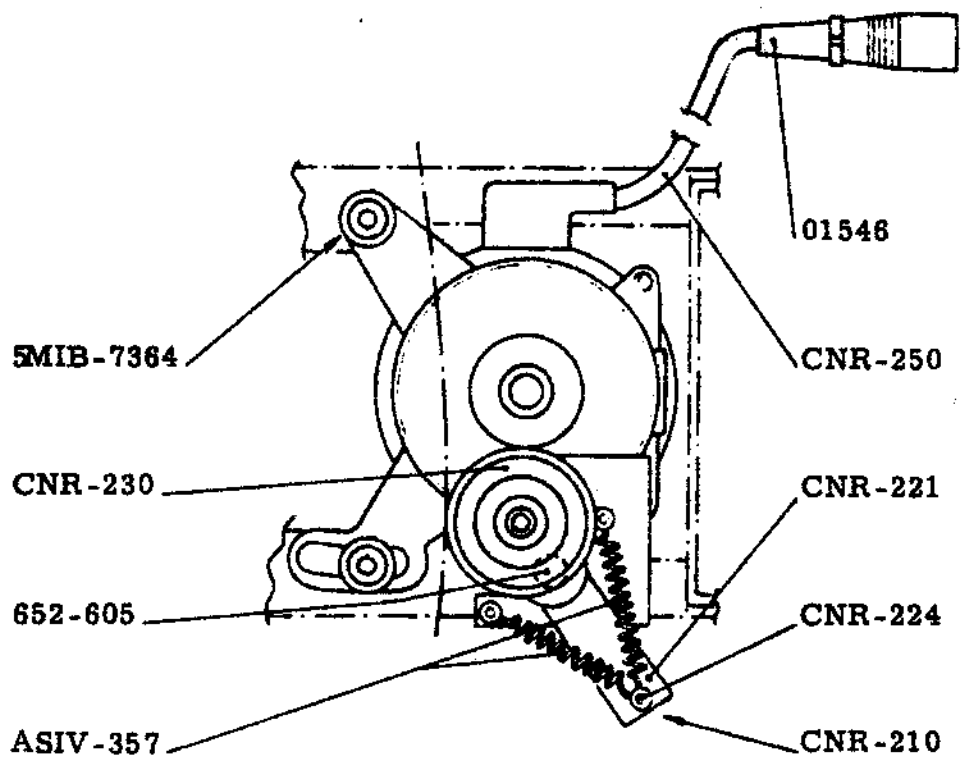
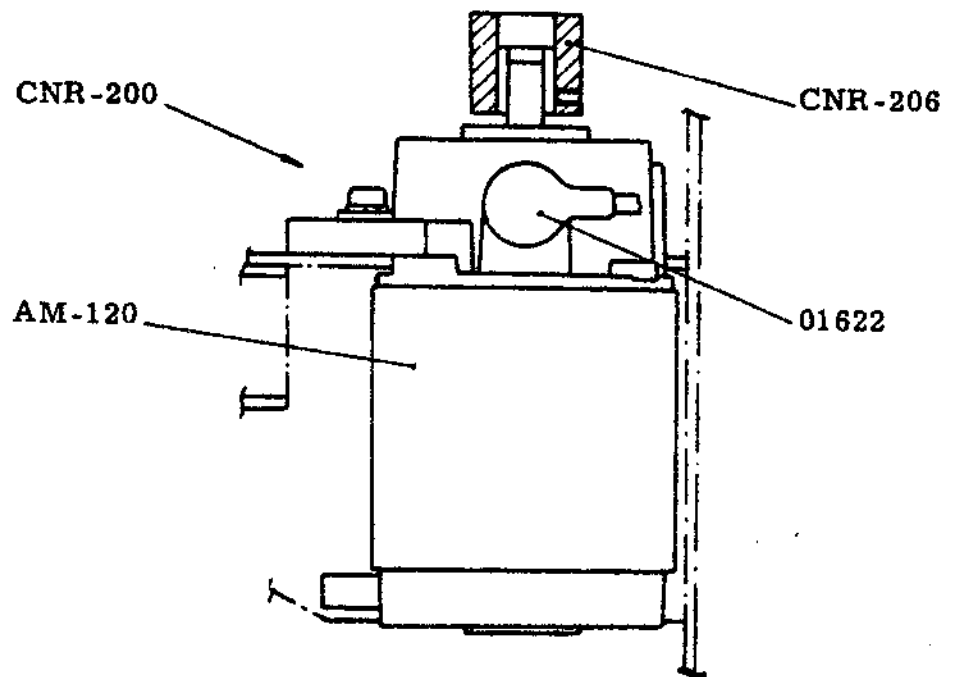


FIG. 9

FIG. 9 - MOTORE COMPLETO

CNR-200	-	Motore completo
01546	-	Spina volante 16A
01622	-	Pipetta di protezione
CNR-206	-	Puleggia motore
CNR-210	-	Supporto puleggia comando piatti completo
CNR-221	-	Sgancio puleggia con boccola
CNR-224	-	Perno aggancio molla
CNR-230	-	Puleggia completa
CNR-250	-	Cavo alimentazione completo
652-605	-	Vite a colletto
5MIB-7364	-	Boccola
AM-120	-	Motore (nudo)
ASIV-357	-	Molla a elica

FIG. 9 - MOTEUR

CNR-200	-	Moteur
01546	-	Connecteur 16A
01622	-	Protège balai
CNR-206	-	Galet du moteur
CNR-210	-	Support débrayable du galet intermédiaire de commande plateau
CNR-221	-	Bras articulé débrayable
CNR-224	-	Axe d'accrochage ressort
CNR-230	-	Galet
CNR-250	-	Câble d'alimentation
652-605	-	Vis à collier
5MIB-7364	-	Fixation du moteur
AM-120	-	Moteur (seul)
ASIV-357	-	Ressort du compresseur du galet intermédiaire

FIG. 9 - MOTOR ASSEMBLY

CNR-200	-	Motor assembly
01546	-	Male XLR 16A connector
01622	-	Cable cuff
CNR-206	-	Motor pulley
CNR-210	-	Platter drive pulley assembly
CNR-221	-	Pulley engaged/disengaged lever with bushing
CNR-224	-	Spring pin
CNR-230	-	Pulley assembly
CNR-250	-	Complete motor cable
652-605	-	Collar screw
5MIB-7364	-	Bushing
AM-120	-	Motor only
ASIV-357	-	Helical spring

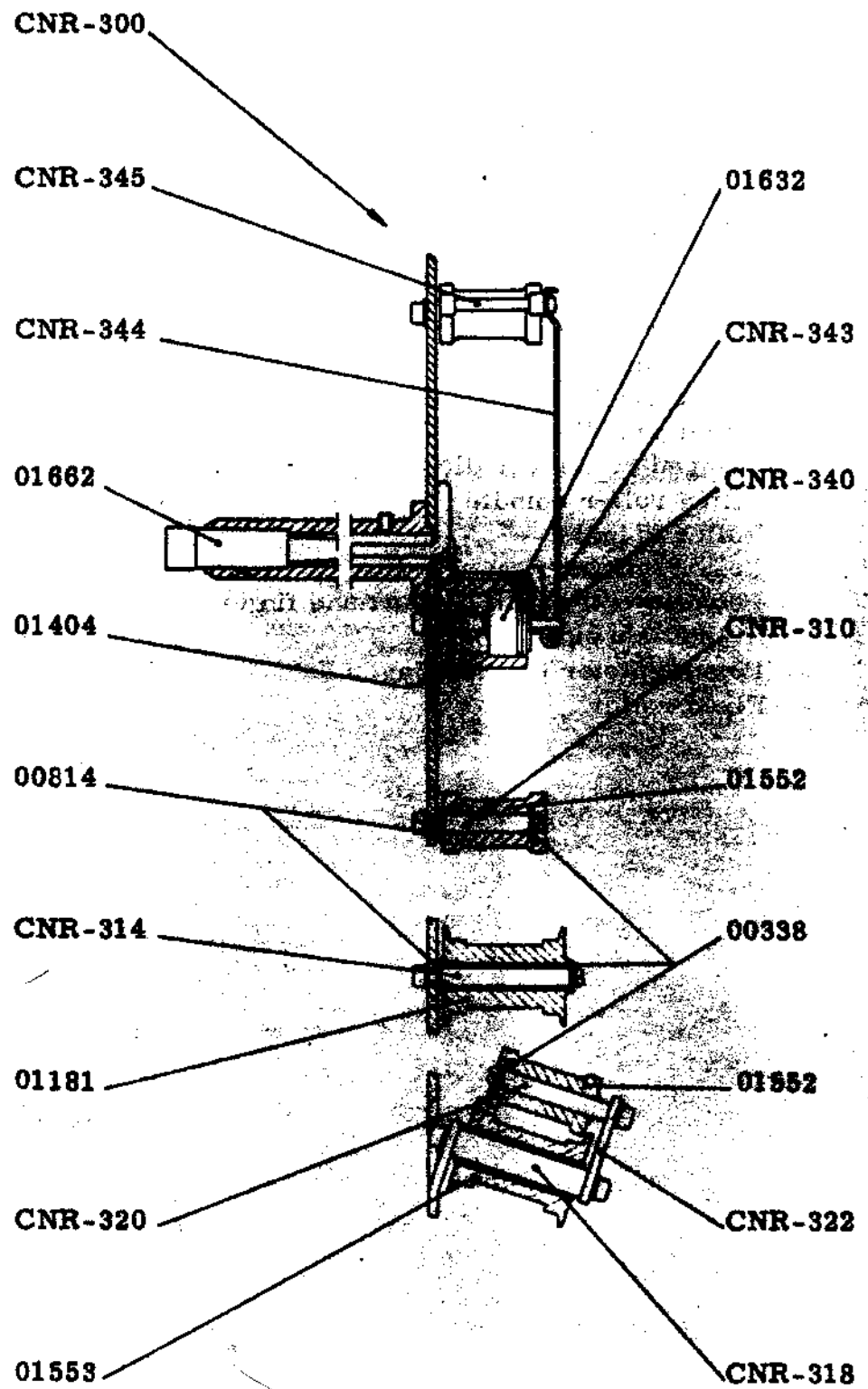


FIG. 10

FIG. 10 - FILM PAY OUT ASSEMBLY

- CNR-300 - Film pay out assembly
- 00338 - Circlip
- 00814 - Washer
- 01181 - Flanged roller
- 01404 - "O" ring
- 01552 - Roller
- 01553 - Flanged roller
- 01632 - Potentiometer
- 01662 - 6-pole plug
- CNR-310 - Roller spindle
- CNR-314 - Flanged roller spindle
- CNR-318 - Tilted roller spindle
- CNR-320 - Roller spindle
- CNR-322 - Roller bracket
- CNR-340 - Potentiometer with support and finger
- CNR-343 - Helical spring
- CNR-344 - Potentiometer control finger
- CNR-345 - Fixed roller

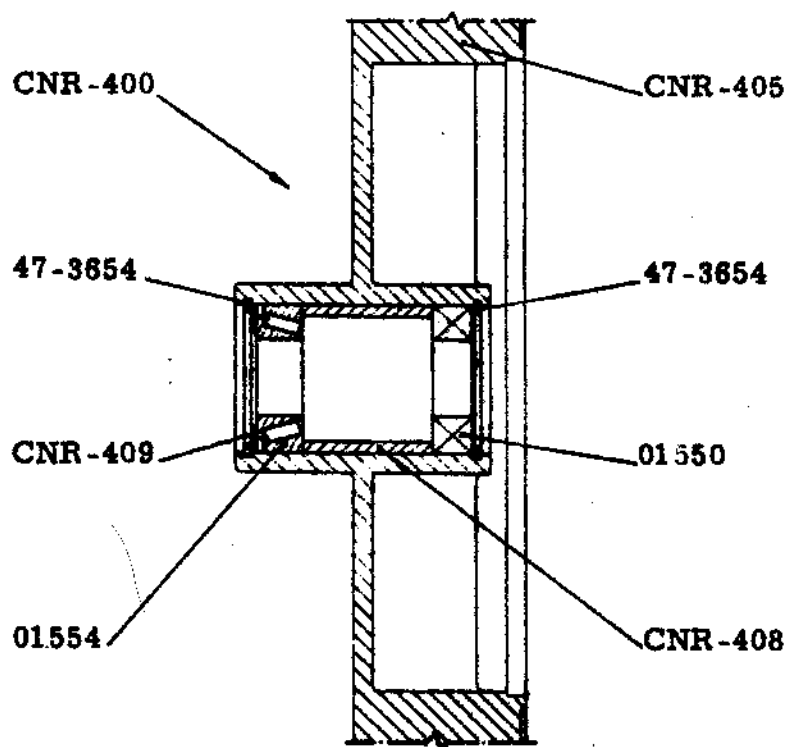


FIG. 11

FIG. 11 - PIATTO COMPLETO

CNR-400	-	Piatto completo
01550	-	Cuscinetto radiale
01554	-	Cuscinetto a rulli conici
CNR-405	-	Supporto dischi (fusione lavorata)
CNR-408	-	Distanziale cuscinetto
CNR-409	-	Rosetta ritenuta cuscinetto
47-3654	-	Anello elastico UNI 3654 diam. 47mm.

FIG. 11 - PLATEAU

CNR-400	-	Plateau (disque, fonderie, roulement, etc)
01550	-	Roulement à billes radial
01554	-	Roulement à billes à galets coniques
CNR-405	-	Support disque (fonderie seule)
CNR-408	-	Entretoise roulement à billes
CNR-409	-	Rondelle de retenue roulement à billes
47-3654	-	Clips élastique UNI 3654 Ø 47mm

CNR-405	-	Platter machined casting center
CNR-408	-	Bearing spacer
CNR-409	-	Bearing washer
47-3654	-	Circlip type UNI 3654 - 47mm dia.

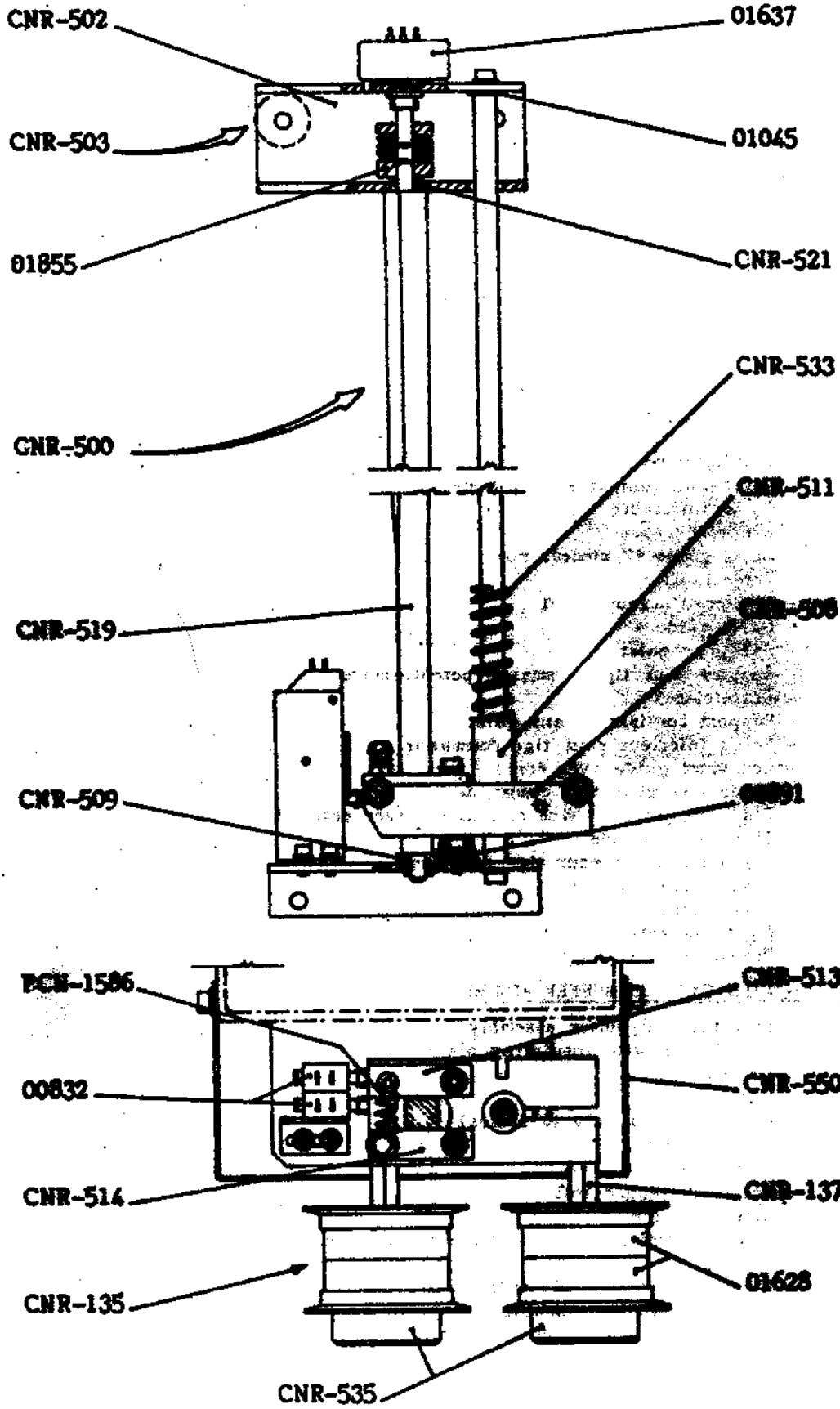


FIG. 12 - POLMONE FILM COMPLETO

- CNR-500 - Polmone film completo
- 00832 - Microinterruttore con piastrina isolante
- 00891 - Piedino
- 01045 - Rosetta spessore
- 01628 - Rullo con guide (2 pezzi) (nudo)
- 01637 - Potenzimetro
- 01855 - Giunto elastico
- CNR-135 - Rullo guida completo
- CNR-137 - Perno per rullo
- CNR-502 - Supporto asta comando potenziometro
- CNR-503 - Distanziale
- CNR-508 - Supporto scorrevole completo senza rullo
- CNR-509 - Boccola inferiore asta comando
- CNR-511 - Manicotto guida con boccola
- CNR-513 - Guida fissa per asta comando
- CNR-514 - Guida mobile per asta comando con distanziale
- CNR-519 - Asta comando
- CNR-521 - Boccola superiore asta comando
- CNR-533 - Molla a elica
- CNR-535 - Contrappeso
- CNR-550 - Protezione polmone
- PCN-1586 - Molla a elica

FIG. 12 - STABILISATEUR DE REPRISE DU FILM

- CNR-500 - Stabilisateur
- 00832 - Micro-interrupteur avec plaquette isolante
- 00891 - Butée inférieure
- 01045 - Rondelle
- 01628 - Galet guide (2 pièces, nu)
- 01637 - Potentiometre
- 01855 - Flector d'accouplement
- CNR-135 - Galet guide
- CNR-137 - Axe pour galet
- CNR-502 - Support pour tige commande potentiometre
- CNR-503 - Entretoise
- CNR-508 - Support coulissant sans galet
- CNR-509 - Ecrou inférieur pour tige commande
- CNR-511 - Coussinet guide avec écrou
- CNR-513 - Guide fixe pour tige commande
- CNR-514 - Guide mobile pour tige commande, avec entretoise
- CNR-519 - Tige de commande
- CNR-521 - Ecrou supérieur pour tige commande
- CNR-533 - Ressort en hélice
- CNR-535 - Contrepoids
- CNR-550 - Capot protection
- PCN-1586 - Ressort en hélice

FIG. 12 - FILM TAKE UP BUFFER ASSEMBLY

- CNR-500 - Film take up buffer assembly
- 00832 - Microswitch with insulating plate
- 00891 - Bumper
- 01045 - Washer
- 01628 - Flanged roller only (2 plates)
- 01637 - Potentiometer
- 01855 - Elastic joint
- CNR-135 - Complete flanged roller
- CNR-137 - Roller spindle
- CNR-502 - Mounting bracket for potentiometer twisted rod
- CNR-503 - Spacer
- CNR-508 - Sliding block assembly without roller
- CNR-509 - Lower twisted rod bushing
- CNR-511 - Guide sleeve with bushing
- CNR-513 - Twisted rod fixed guide
- CNR-514 - Twisted rod pressure guide with spacer
- CNR-519 - Twisted rod
- CNR-521 - Upper twisted rod bushing
- CNR-533 - Helical spring

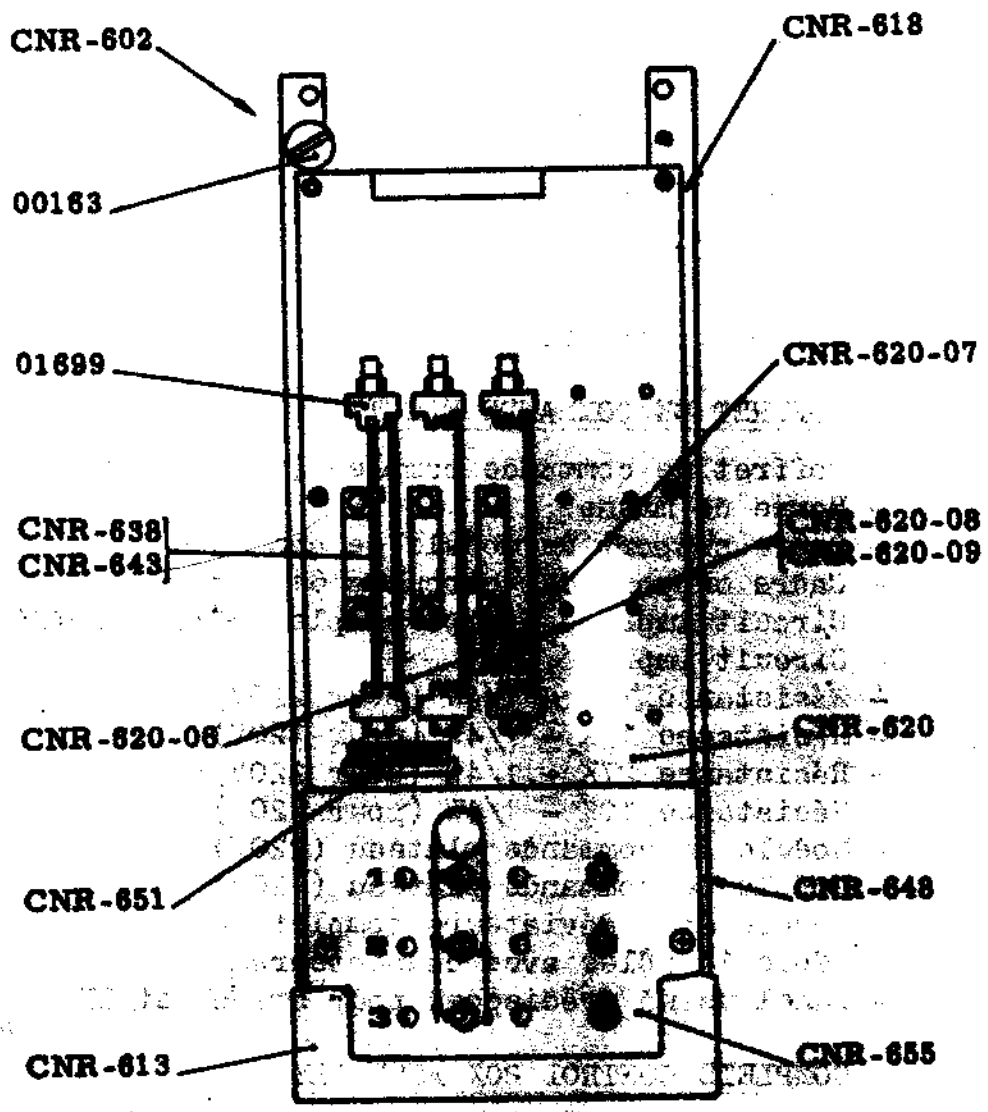


FIG. 15

FIG. 13 - IMPIANTO ELETTRICO

CNR-602	- Unità di comando e controllo completa (specif. tensione)
00163	- Morsetto di massa
01699	- Telaio guida scheda
CNR-613	- Coperchio comandi
CNR-618	- Scheda di fondo cablata (specificare tensione)
CNR-620	- Circuito stampato (nudo)
CNR-620-06	- Resistenza 15K - 1/4W (per 220V)
CNR-620-07	- Resistenza 15K - 1/4W (per 120V)
CNR-620-08	- Resistenza 27K - 1/4W (per 220V)
CNR-620-09	- Resistenza 10K - 1/4W (per 120V)
CNR-638	- Scheda comando piatto completa (220V)
CNR-643	- Scheda comando piatto completa (120V)
CNR-648	- Scheda con deviatori completa
CNR-651	- Cavo 14 poli con connettori
CNR-655	- Targhetta comandi

FIG. 13 - COFFRET DE COMMANDE ELECTRIQUE

CNR-602	- Coffret de commande complet (préciser tension)
00163	- Borne de masse
01699	- Cadre support de module de commande
CNR-613	- Cadre support des circuits 618 et 655
CNR-618	- Circuit imprimé équipé complet câblé (préciser tension)
CNR-620	- Circuit imprimé, nu
CNR-620-06	- Résistance 15K - 1/4W (pour 220V)
CNR-620-07	- Résistance 15K - 1/4W (pour 120V)
CNR-620-08	- Résistance 27K - 1/4W (pour 220V)
CNR-620-09	- Résistance 10K - 1/4W (pour 120V)
CNR-638	- Module de commande plateau (220V)
CNR-643	- Module de commande plateau (120V)
CNR-648	- Module avec déviateurs complet
CNR-651	- Câble 14 pôles avec connecteurs
CNR-655	- Panel usiné prédisposé pour switch et LED

FIG. 13 - COMPLETE CONTROL BOX ASSEMBLY

CNR-602	- Complete control box assembly (voltage to be specified)
00163	- Ground post
01699	- Printed circuit card guide
CNR-613	- Control box cover
CNR-618	- Wired mother board (voltage to be specified)
CNR-620	- Printed circuit board only
CNR-620-06	- 15 Kohm 1/4W resistor (for 220V)
CNR-620-07	- 15 Kohm 1/4W resistor (for 120V)
CNR-620-08	- 27 Kohm 1/4W resistor (for 220V)
CNR-620-09	- 10 Kohm 1/4W resistor (for 120V)
CNR-638	- Complete speed control card (220V)
CNR-643	- Complete speed control card (120V)
CNR-648	- Board with switches
CNR-651	- 14-pole flat cable with connectors

FIG. 21

00885

01151

01164

00754

0058b

CNR-776

CNR-770

01306

FIG. 23

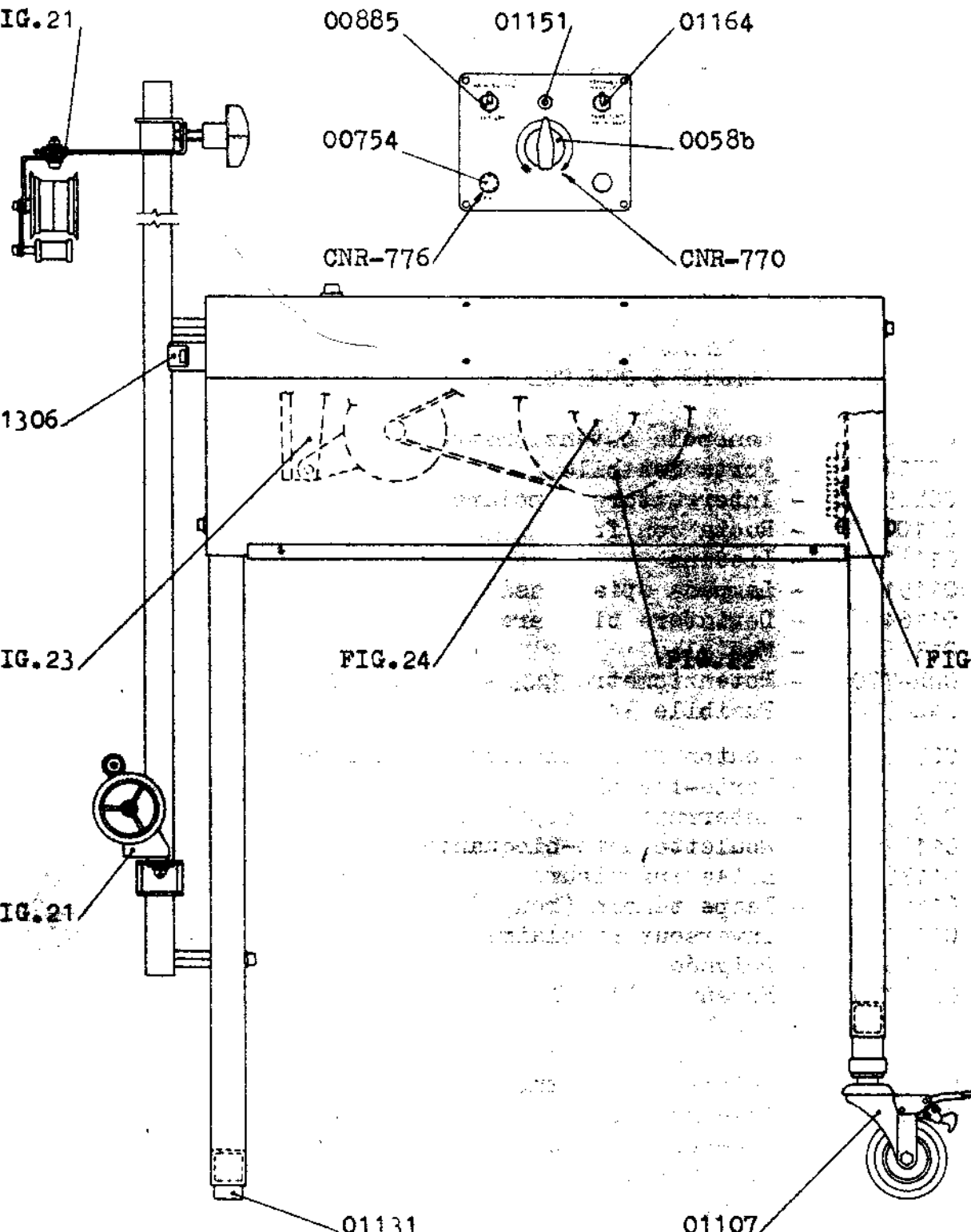
FIG. 24

FIG. 2

FIG. 21

01131

01107



CARRELLO AVVOLGITORE

- FIG. 21 - RULLO MOBILE COMPLETO
- FIG. 22 - SUPPORTO ALBERO COMPLETO
- FIG. 23 - SUPPORTO MOTORE COMPLETO
- FIG. 24 - ACCESSORI
- FIG. 25 - IMPIANTO ELETTRICO

TABLE DE MONTAGE

- FIG. 21 - GALET PIVOTANT COMPLET
- FIG. 22 - S/E DE L'ARBRE ENROULEUR DEROULEUR
- FIG. 23 - S/E MOTEUR COMPLET
- FIG. 24 - ACCESSOIRES
- FIG. 25 - COFFRET DE COMMANDE ELECTRIQUE

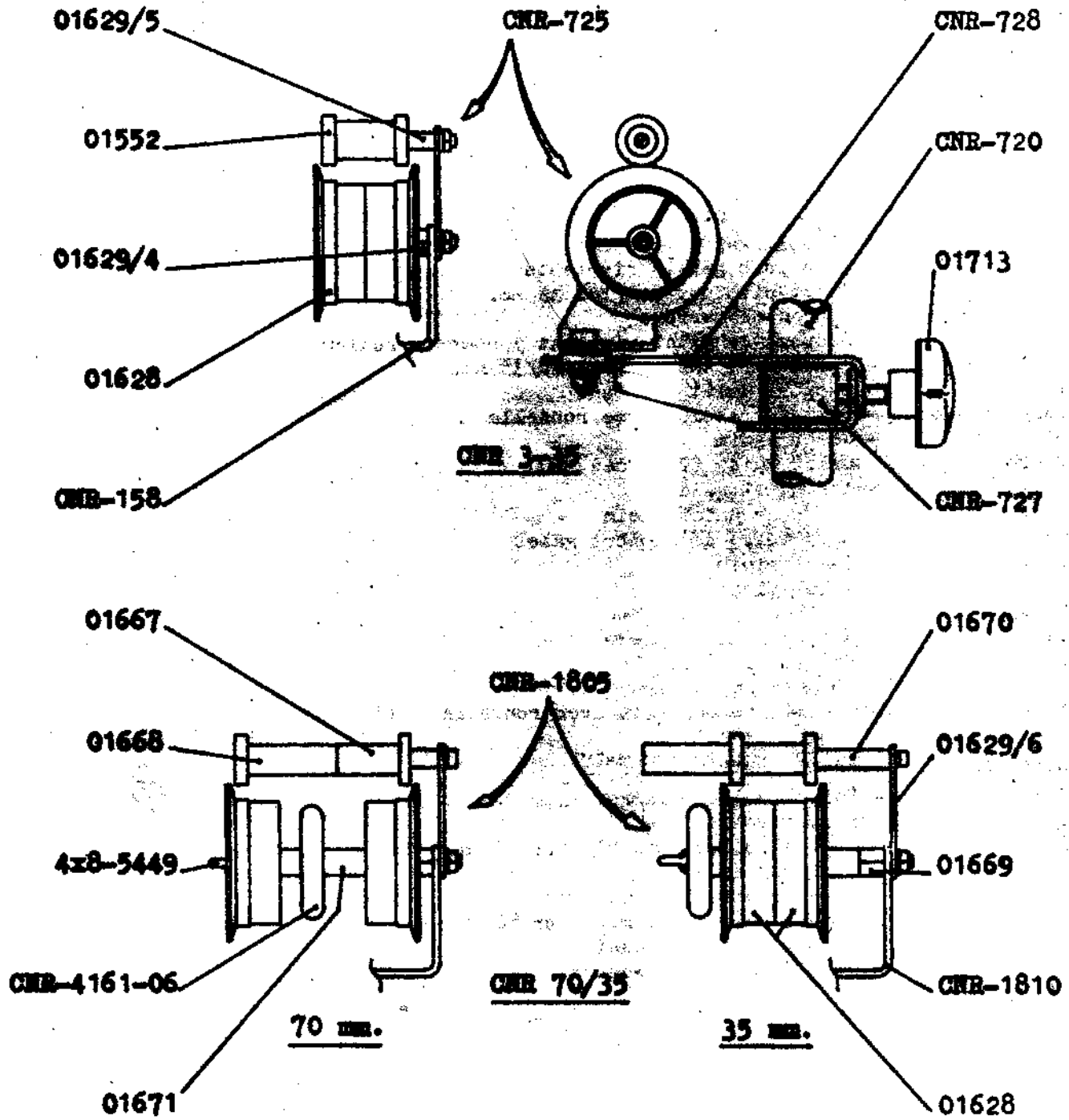
MAKE UP TABLE

- FIG. 21 - SWIVEL ROLLER ASSEMBLY
- FIG. 22 - SPINDLE SUPPORT ASSEMBLY
- FIG. 23 - MOTOR BRACKET ASSEMBLY
- FIG. 24 - ACCESSORIES
- FIG. 25 - COMPLETE CONTROL PLATE ASSEMBLY

- 0058b - Manopola potenziometro
- 00754 - Porta fusibile
- 00885 - Interruttore bipolare
- 01107 - Ruota con freno
- 01131 - Piedino
- 01151 - Lampada spia rossa
- 01164 - Deviatore bipolare
- 01306 - Maniglia
- CNR-770 - Potenziometro 220K - lineare 2W
- CNR-776 - Fusibile 3A

- 0058b - Bouton de régulation de vitesse
- 00754 - Porte-fusible
- 00885 - Interrupteur bipolaire
- 01107 - Roulette auto-bloquante
- 01131 - Butée inférieure
- 01151 - Lampe témoin (rouge)
- 01164 - Inverseur bipolaire
- 01306 - Poignée
- CNR-770 - Potentiomètre 220K - linéaire 2W
- CNR-776 - Fusible 3A

- 0058b - Potentiometer knob
- 00754 - Fuse holder
- 00885 - Two-pole switch
- 01107 - Caster wheel with brake
- 01131 - Rubber bumper
- 01151 - Red pilot light
- 01164 - Two-pole switch
- 01306 - Handle
- CNR-770 - 220Kohm 2W linear potentiometer
- CNR-776 - 3A fuse



<u>FIG. 21</u>	<u>- RULLO MOBILE COMPLETO</u>
CNR-158	- Supporto rullino mobile
CNR-720	- Asta per rulli mobili
CNR-725	- Rullo mobile completo 35 mm.
CNR-727	- Tubo protezione asta
CNR-728	- Cavallotto con cuscinetto
CNR-1805	- Rullo mobile completo 70/35 mm.
CNR-1810	- Supporto rullino mobile
CNR-4161-06	- Semi-distanziale rulli con rosetta
01552	- Rullino piano
01628	- Rullo con guide (2 pezzi) - nudo
01629/4	- Perno rullo con guide
01629/5	- Perno per rullino piano
01629/6	- Piastrina supporto rullo
01667	- Rullino piano
01668	- Rullino piano
01669	- Perno per rullo con guide
01670	- Perno per rullino piano
01671	- Distanziale rulli
01713	- Manopola di serraggio
4x8-5449	- Vite alettata AM 4x8 UNI 5449 con rosetta

<u>FIG. 21</u>	<u>- GALET PIVOTANT COMPLET</u>
CNR-158	- Support galet pivotant
CNR-720	- Tige pour galets pivotants
CNR-725	- Galet pivotant complet 35 mm.
CNR-727	- Anneau de serrage
CNR-728	- Support du galet pivotant y compris roulement
CNR-1805	- Galet pivotant complet 70/35 mm.
CNR-1810	- Support galet pivotant
CNR-4161-06	- Demi-entretoise avec rondelle
01552	- Galet plein
01628	- Galet guide (2 pièces, m)
01629/4	- Axe galet guide
01629/5	- Axe pour galet plein
01629/6	- Entretoise de support galet
01667	- Galet plein
01668	- Galet plein
01669	- Axe pour galet guide
01670	- Axe pour galet plein
01671	- Entretoise galet
01713	- Poignée de serrage
4x8-5449	- Vis AM 4x8 UNI 5449 avec rondelle

<u>FIG. 21</u>	<u>- SWIVEL ROLLER ASSEMBLY</u>
CNR-158	- Swivel roller bracket
CNR-720	- Swivel roller mast
CNR-725	- Swivel roller assembly for 35 mm.
CNR-727	- Mast collar
CNR-728	- Bracket with ball bearing
CNR-1805	- Swivel roller assembly for 70/35 mm.
CNR-1810	- Swivel roller bracket
CNR-4161-06	- Half-spacer with washer
01552	- Roller
01628	- Flanged roller only (2 pieces)
01629/4	- Flanged roller spindle
01629/5	- Roller spindle
01629/6	- Bracket with spindle
01667	- Roller
01668	- Roller
01669	- Flanged roller spindle
01670	- Roller spindle
01671	- Roller spacer

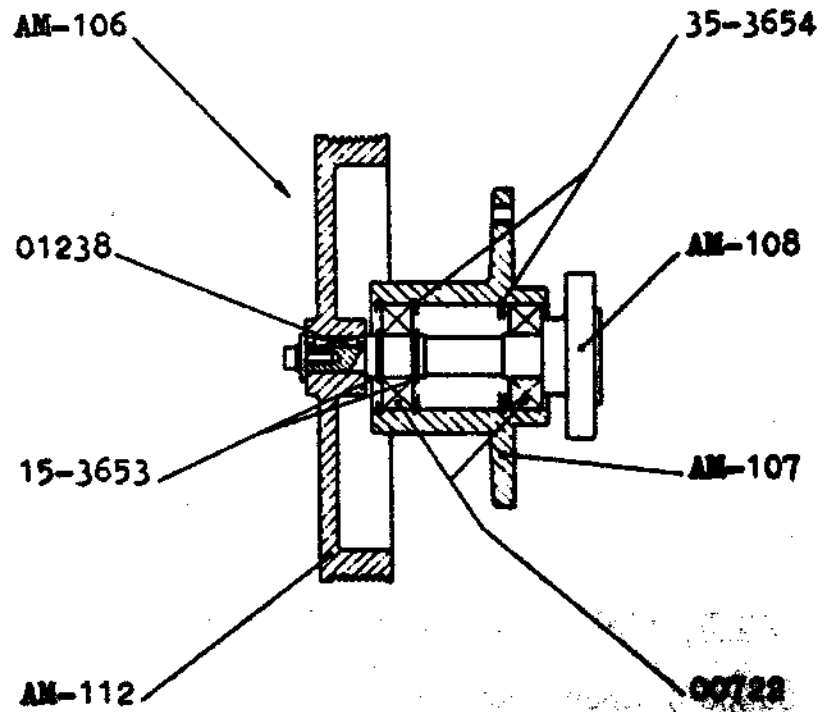


FIG. 22

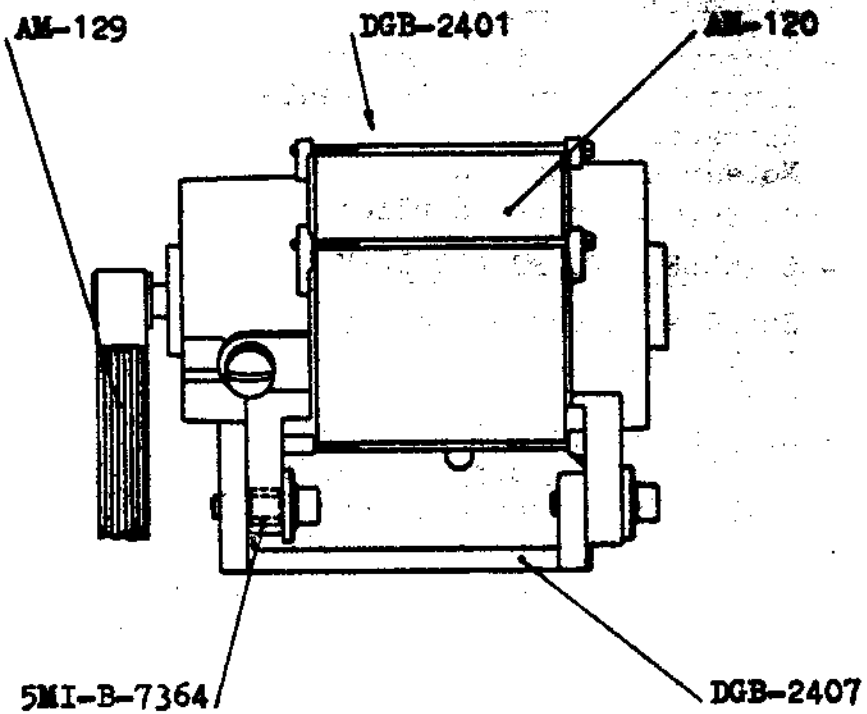


FIG. 23

FIG. 22 - SUPPORTO ALBERO COMPLETO

- AM-106 - Supporto albero completo
- 00722 - Cuscinetto a sfera
- 01238 - Chiavetta
- AM-107 - Supporto (fusione lavorata)
- AM-108 - Albero supporto albero bobina
- AM-112 - Puleggia (fusione lavorata)
- 15-3653 - Anello elastico UNI 3653 diam. 15mm.
- 35-3654 - Anello elastico UNI 3654 diam. 35mm.

FIG. 23 - SUPPORTO MOTORE COMPLETO

- DGB-2401 - Supporto motore completo
- DGB-2407 - Supporto motore (fusione lavorata)
- 5MIB-7364 - Distanziale
- AM-120 - Motore con pignone
- AM-129 - Cinghia Poly V a 8 gole

FIG. 22 - S/E DE L'ARBRE ENROULEUR DEROULEUR

- AM-106 - Support arbre complet
- 00722 - Roulement à billes
- 01238 - Clavette
- AM-107 - Support (fusion seule)
- AM-108 - Arbre support axe bobine
- AM-112 - Poulie (fusion seule)
- 15-3653 - Rondelle élastique UNI 3653 \varnothing 15mm.
- 35-3654 - Rondelle élastique UNI 3654 \varnothing 35mm.

FIG. 23 - S/E MOTEUR COMPLET

- DGB-2401 - Support complet de moteur
- DGB-2407 - Support moteur (fusion seule)
- 5MIB-7364 - Entretoise
- AM-120 - Moteur avec pignon
- AM-129 - Courroie Poly V à 8 pôles

FIG. 22 - SPINDLE SUPPORT ASSEMBLY

- AM-106 - Spindle support assembly
- 00722 - Ball bearing
- 01238 - Key
- AM-107 - Support (machined casting)
- AM-108 - Spool spindle support shaft
- AM-112 - Pulley (machined casting)
- 15-3653 - Circlip type UNI 3653 - 15mm dia.
- 35-3654 - Circlip type UNI 3654 - 35mm dia.

FIG. 23 - MOTOR BRACKET ASSEMBLY

- DGB-2401 - Motor bracket assembly
- DGB-2407 - Motor bracket (machined casting)

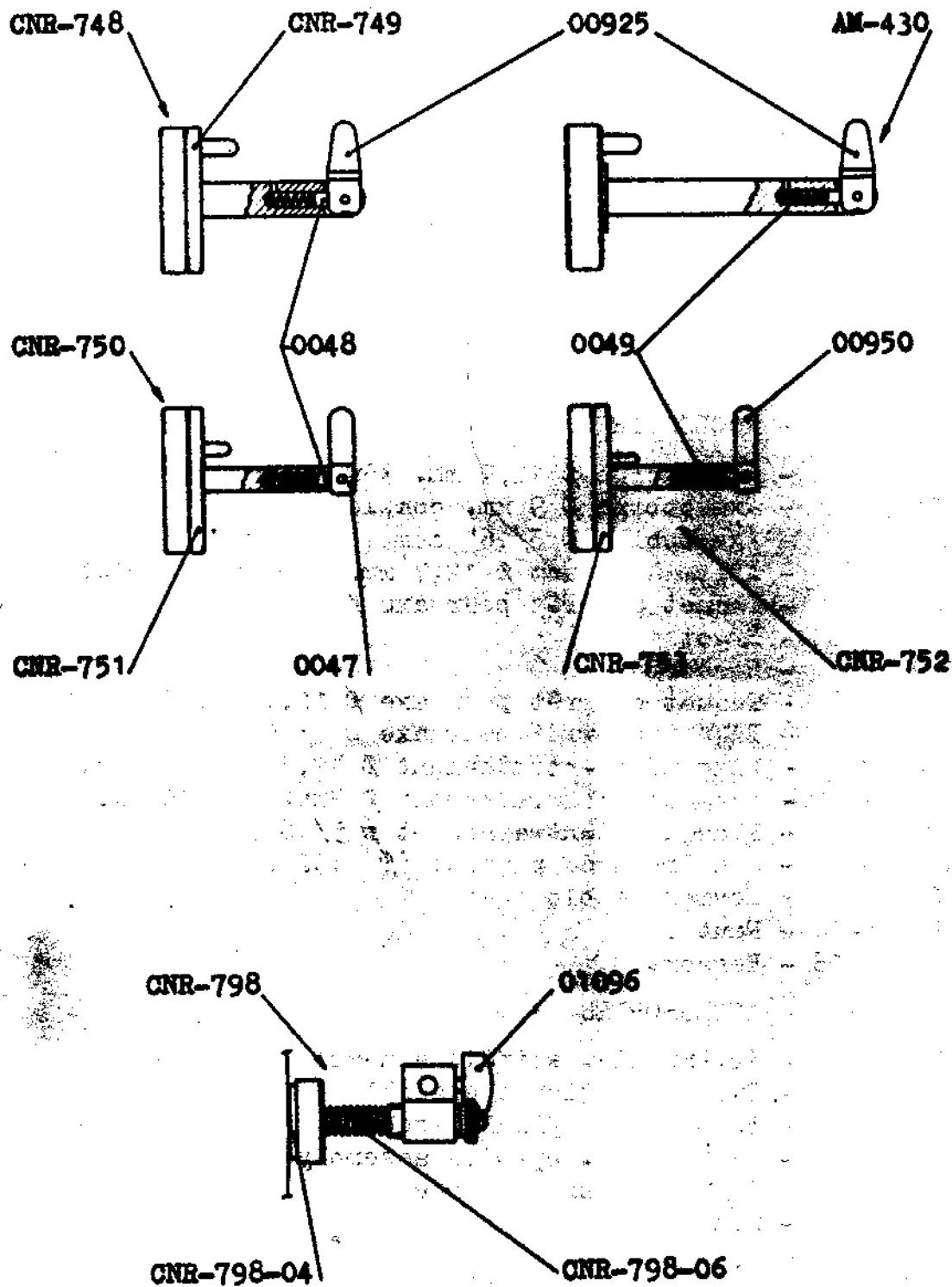


FIG. 24

FIG. 24 - ACCESSORI

CNR-748 - Albero bobina ϕ 12,7mm - 35mm completo
 CNR-750 - Albero bobina ϕ 9 mm completo
 CNR-752 - Albero bobina ϕ 5/16" completo
 AM-430 - Albero bobina ϕ 12,7mm. - 70 mm. completo
 0047 - Snodo per albero ϕ 9 mm.
 0048 - Nottolino
 0049 - Molla
 00925 - Snodo per albero ϕ 12,7 mm
 00950 - Snodo per albero ϕ 5/16"
 CNR-749 - Flangia mandabobina ϕ 12,7mm - 35 mm.
 CNR-751 - Flangia mandabobina ϕ 9 mm
 CNR-753 - Flangia mandabobina ϕ 5/16"
 CNR-798 - Freno per piatto completo
 01096 - Chiavetta a vite
 CNR-798-04 - Feltro
 CNR-798-06 - Molla

FIG. 24 - ACCESSOIRES

CNR-748 - Axe bobine ϕ 12,7 mm. 35mm. complet
 CNR-750 - Axe bobine ϕ 9 mm. complet
 CNR-752 - Axe bobine ϕ 5/16" complet
 AM-430 - Arbre à taquet ϕ 12,7 mm. 70 mm. complet
 0047 - Taquet d'arrêt pour axe ϕ 9 mm.
 0048 - Ergot
 0049 - Ressort
 00925 - Taquet d'arrêt pour axe ϕ 12,7 mm.
 00950 - Taquet d'arrêt pour axe ϕ 5/16"
 CNR-749 - Flasque d'entraînement ϕ 12,7 mm. 35 mm.
 CNR-751 - Flasque d'entraînement ϕ 9mm. 35 mm.
 CNR-753 - Flasque d'entraînement ϕ 5/16"
 CNR-798 - S/E Frein du plateau (ϕ 132 cm.)
 01096 - Levier de blocage
 CNR-798-04 - Feutre
 CNR-798-06 - Ressort

FIG. 24 - ACCESSORIES

CNR-748 - 12.7mm dia. spindle assembly for 35mm
 CNR-750 - 9mm dia. spindle assembly
 CNR-752 - 5/16" dia. spindle assembly
 AM-430 - 12.7mm dia. spindle assembly for 70mm
 0047 - 9mm dia. spindle knee
 0048 - Pin
 0049 - Spring
 00925 - 12.7mm dia. spindle knee
 00950 - 5/16" dia. spindle knee
 CNR-749 - Drive pin flange - 12.7mm dia. for 35mm
 CNR-751 - Drive pin flange - 9mm dia.
 CNR-753 - Drive pin flange - 5/16" dia.
 CNR-798 - Platter brake assembly

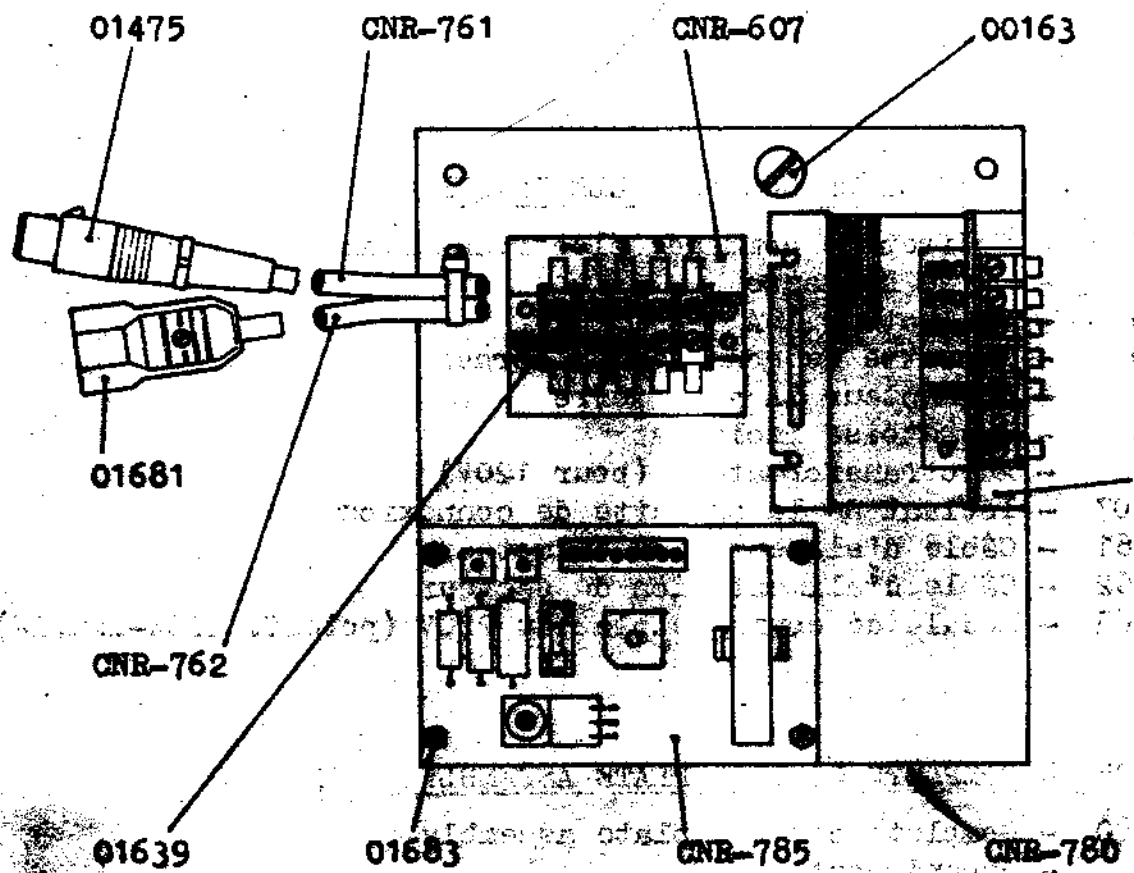


FIG. 25

FIG. 25 - IMPIANTO ELETTRICO

- CNR-780 - Supporto impianto elettrico completo
- 00163 - Morsetto di massa
- 01475 - Presa volante 16A
- 01639 - Morsettiera 5 posti
- 01681 - Spina volante 6A con terra
- 01683 - Distanziale isolante
- 01791 - Autotrasformatore (per 120V)
- CNR-607 - Targhetta morsettiera
- CNR-761 - Cavo alimentazione motori piatti
- CNR-762 - Cavo rete
- CNR-785 - Scheda comando completa 220V (potenziom. 220K-lin.2W)

FIG. 25 - COFFRET DE COMMANDE ELECTRIQUE

- CNR-780 - Coffret de commande électrique complet
- 00163 - Barre de masse
- 01475 - Connecteur 16A
- 01639 - Barrette de connexion 5 bornes
- 01681 - Connecteur 6A avec terre
- 01683 - Barrette isolante
- 01791 - Autotransformateur (pour 120V)
- CNR-607 - Isolant de la barrette de connexion
- CNR-761 - Câble d'alimentation du moteur
- CNR-762 - Câble d'alimentation du secteur
- CNR-785 - Module de commande plateau 220V (potent. 220K-lin.2W)

FIG. 25 - COMPLETE CONTROL PLATE ASSEMBLY

- CNR-780 - Complete control plate assembly
- 00163 - Ground post
- 01475 - Female XLR 16A connector
- 01639 - 5-terminal board
- 01681 - Male 6A mains plug
- 01683 - Insulating spacer
- 01791 - Autotransformer (for 120V)
- CNR-607 - Terminal board label
- CNR-761 - Platter motor cable
- CNR-762 - Mains cable
- CNR-785 - Complete speed control card 220V (220Kohm 2W linear potentiometer)

da *Ing. G. G. G.*
Controllato
da



TAVOLO AVVOLGIBILE TA 35 - TA 70/35 (1000 Mo)

8105

Misure d'ingombro - Overall dimensions

Data 7.2.35
Disegnate

