

Film-Tech

The information contained in this Adobe Acrobat pdf file is provided at your own risk and good judgment.

These manuals are designed to facilitate the exchange of information related to cinema projection and film handling, with no warranties nor obligations from the authors, for qualified field service engineers.

If you are not a qualified technician, please make no adjustments to anything you may read about in these Adobe manual downloads.

www.film-tech.com

DMC

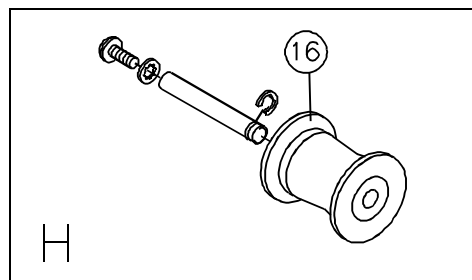
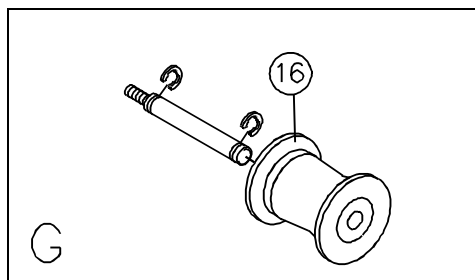
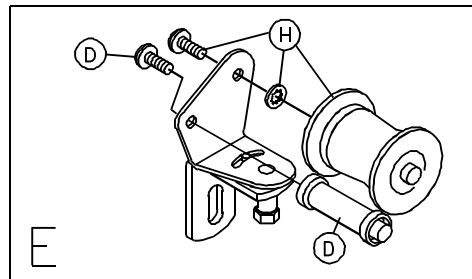
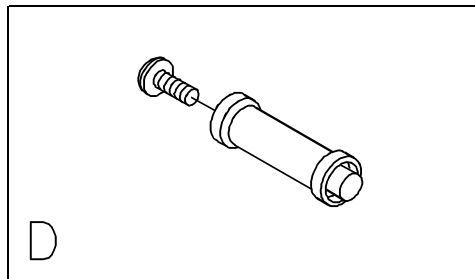
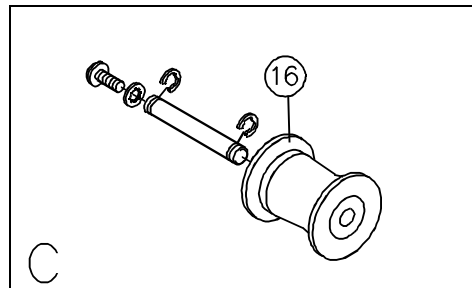
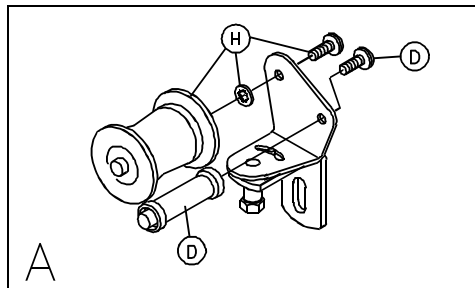
Parts Manual

PRODUCT FORMATION BULLETIN # 3366

For Serial Number 11521095 and After

Record Platter System Identification Numbers Here:

Model # _____ Serial # _____



COMMON PULLEY ASSEMBLIES

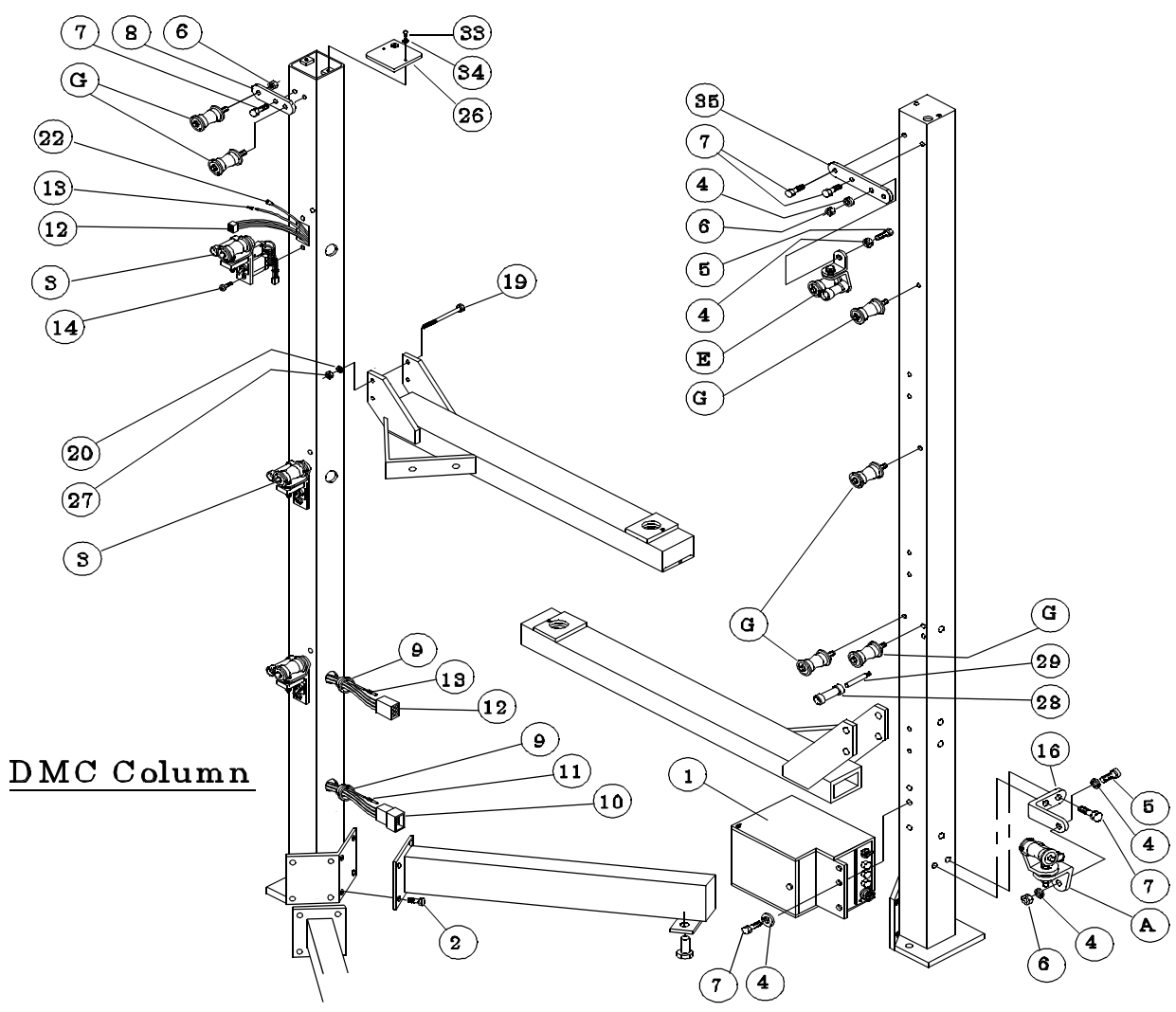
- A) 2604 Castor Swivel Assy, Left 35mm
- C) 1447 Pulley Shaft #6 & Pulley Assy 35mm
- D) 2602 Keeper Shaft & Spool Assy
- E) 1505 Castor Swivel Assy, Right 35mm
- G) 1504 Column Shaft & Pulley Assy 35mm
- H) 1774 Pulley Shaft #5 & Pulley Assy 35mm
- 16) 2881 Pulley 35mm 5/16" ID

DMC Column

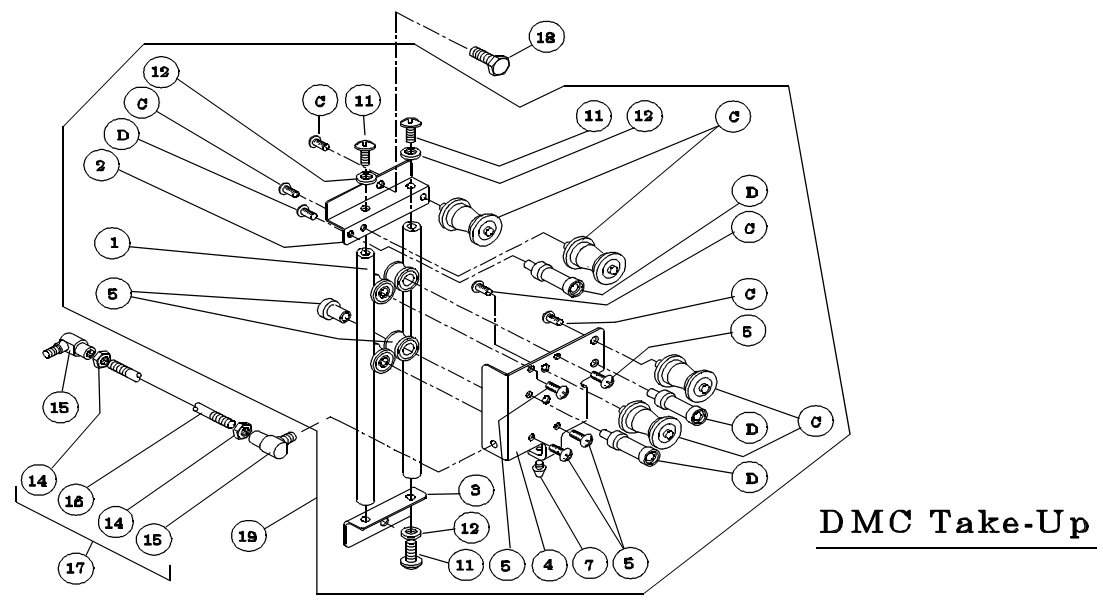
- A) 2604 Castor Swivel Assy, Left 35mm
 - E) 1505 Castor Swivel Assy, Right 35mm
 - G) 1504 Column Shaft & Pulley Assy 35mm
 - 1) 3363 Power Supply Assy DMC
 - 2) 1063 SHCS 3/8-16 x 5/8"
 - 3) 3330 Feed Castor assy DMC
 - 4) 1076 Flatwasher 1/4"
 - 5) 1056 HHCS 1/4-28 x 3/4"
 - 6) 1088 Locknut, Nylon Insert 1/4-28
 - 7) 1055 HHCS 1/4-28 x 1/2"
 - 8) 1168 Column Feed Pulley Bracket 1L
 - 9) 1179 Bushing, Open/Closed 7/8"
 - 10) 1839 Plug, 6 Circuit CPS
 - 11) 1708 Pin, CPS
 - 12) 1840 Receptacle, 6 Circuit CPS
 - 13) 1709 Socket, CPS
 - 14) 1071 Screw PTH 10-32 x 3/8"
 - 16) 1170 Column Bottom Castor Bracket 35mm
 - 19) 1062 HHCS 5/16-18 x 5"
 - 20) 1080 Lockwasher 5/16", Split Ring
 - 22) 1836 Receptacle, 1 Circuit CPS
 - 26) 3331 Column End Cap DMC
 - 27) 1090 Nut Hex 5/16-18
 - 28) 1991 Spool 35mm
 - 29) 1173 Column Pulley Shaft
 - 33) 1072 Screw PTH 10-32 x 1/2"
 - 34) 1075 Flatwasher #10
 - 35) 3402 Column Payout Swivel
Mount Bracket 1L
-

DMC Take-up

- C) 1447 Pulley Shaft #6 & Pulley Assy 35mm
- D) 2602 Keeper Shaft & Spool Assy
 - 1) 1238 Take-up Rail
 - 2) 1236 Take-Up Upper Bracket
 - 3) 1237 Take-Up Lower Bracket
 - 4) 2253 Take-Up Slide Plate
 - 5) 2629 Take-Up Slide Shaft & Roller Assy
 - 7) 2067 Take-up Stop Bumper
- 11) 1071 Screw PTH 10-32 x 3/8"
- 12) 1078 Lockwasher #10, Internal Tooth
- 14) 1087 Nut Hex 1/4-28
- 15) 2660 Ball Swivel 1/4-28
- 16) 2247 Linkage Rod
- 17) 3356 Power Supply Linkage Rod Assy 12 1/2"
- 18) 1055 HHCS 1/4-28 x 1/2"
- 19) 3354 Take-Up Assy 35mm W/O Stop Pin



DMC Column



DMC Take-Up

DMC Feed Castor Assembly

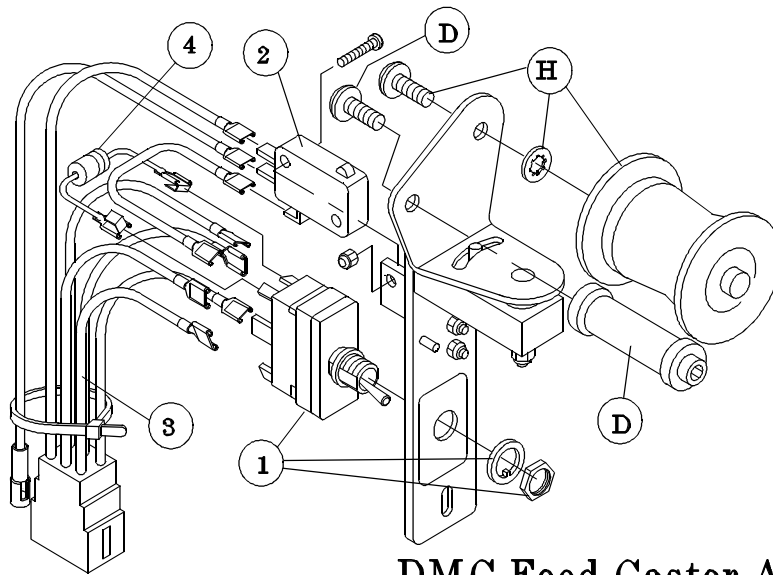
3330 Feed Castor Assy DMC

- D) 2602 Keeper Shaft & Spool Assy
 - H) 1774 Pulley Shaft #5 & Pulley Assy 35mm
 - 1) 1053 Toggle Switch DPDT On-None-On (spade)
 - 2) 1152 Feed Castor Switch
 - 3) 1359 Feed Castor Wire Harness A.P.
 - 4) 3359 Feed Castor Diode (with clips)
-

DMC Power Supply

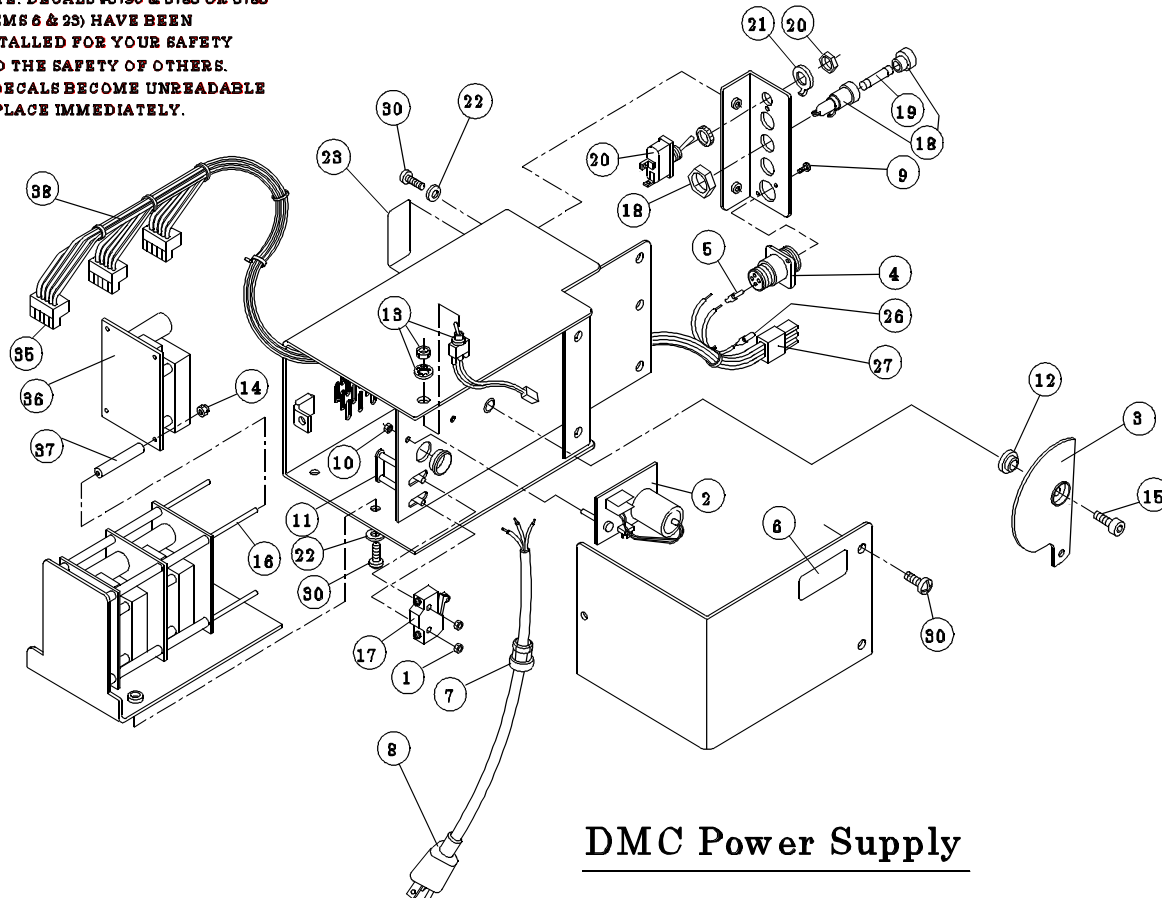
3363 Power Supply Assy DMC

- 1) 1083 Nut Hex 6-32
- 2) 2934 Digital Motor Control (take-up)
- 3) 3355 Power Supply Sensor Disk Assy
- 4) 2056 Receptacle 4 Pin (std sex)
- 5) 2064 Pin, CPC
- 6) 3790 Decal, Cord
- 7) 2391 Strain Relief 5/8 x .125 (.325/.36 dia)
- 8) 1029 Power Cord 3 Wire
- 9) 2521 Screw PPH #8 x 3/8" Type 25
- 10) 1032 Locknut, Nylon Insert 4-40
- 11) 1469 Switch Adjusting Plate Assy
- 12) 2380 Control Plate Sensor Arm Washer
- 13) 2945 DMC Reset Button Wire Harness (take-up)
- 14) 1807 Locknut, Nylon Insert 8-32
- 15) 1104 SHCS 1/4-20 x 1"
- 16) 3322 Power Supply Access Tray Rod
- 17) 2413 Micro Switch, Short Roller Arm, HD
- 18) 1009 Fuse Holder
- 19) 3308 Fuse 1 1/2 Amp 250v Slo-Blo (110v operation)
3407 Fuse 3/4 Amp 250v Slo-Blo (220v operation)
- 20) 1024 Toggle Switch SPST On-Off
- 21) 1081 Washer Switch Keyed
- 22) 1075 Flatwasher #10
- 23) 3785 Decal. 220 VAC
3786 Decal. 110 VAC
- 26) 1709 Socket, CPS
- 27) 1840 Receptacle, 6 Circuit CPS
- 30) 1071 Screw PTH 10-32 x 3/8"
- 35) 3313 Terminal Block, 5 Pole
- 36) 3283 Power Supply Board
- 37) 3321 Power Supply Access Tray Spacer
- 38) 3327 Power Supply Wire Harness DMC (includes items 4,5,26,27 & 35)



DMC Feed Castor Assembly

**NOTE: DECALS #3790 & 3785 OR 3786
(ITEMS 6 & 23) HAVE BEEN
INSTALLED FOR YOUR SAFETY
AND THE SAFETY OF OTHERS.
IF DECALS BECOME UNREADABLE
REPLACE IMMEDIATELY.**



DMC Power Supply

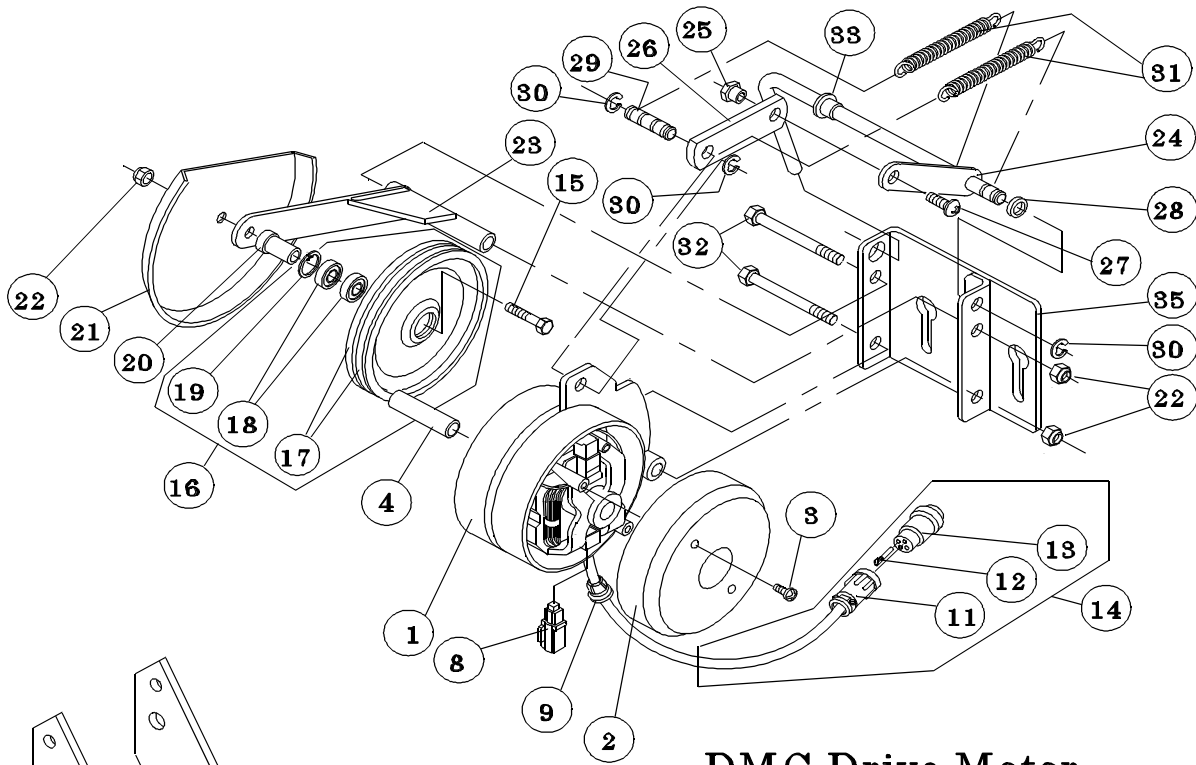
DMC Drive Motor

3360 Drive Motor Assy Type 4 DMC

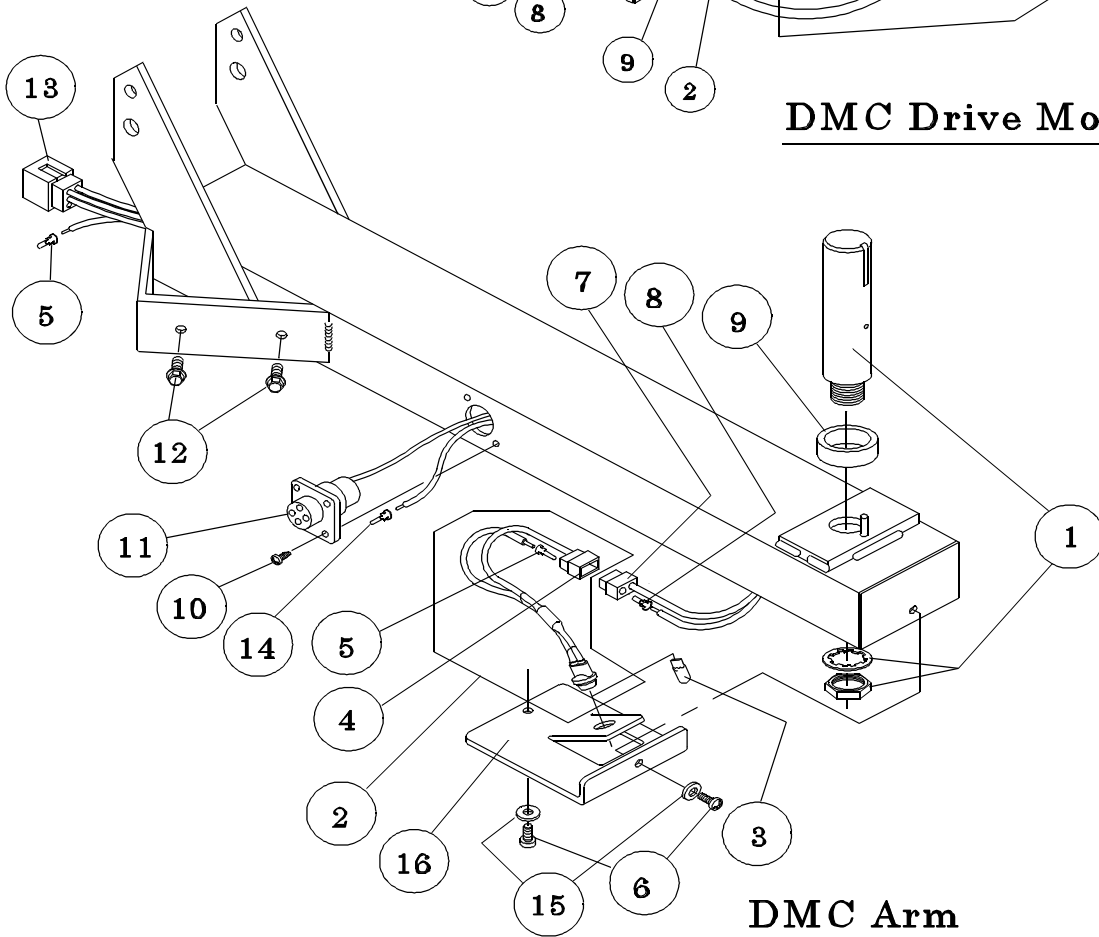
- | | |
|--|--|
| 2) 1192 Drv Mtr End Cover | 22) 1088 Locknut, Nylon Insert 1/4-28 |
| 3) 1091 Screw PPH 10-24 x 3/8" Type F | 23) 1620 Drive Motor Wheel Arm Weldment Type 3 |
| 4) 1630 Drv Mtr Hub Type 3, 3/8" dia | 24) 1618 Drive Motor Toggle Handle Weldment Type 3 |
| 8) 1004 Brush Motor 115 volt (1 pair) | 25) 1631 Drive Motor Linkage Connector Type 3 |
| 9) 2856 Strain Relief 5/8 x .062 | 26) 1634 Drive Motor Connector Link Type 3 |
| 11) 2070 Clamp Cable #11 | 27) 1071 Screw PTH 10-32 x 3/8" |
| 12) 3362 Pin, CPC, Gold | 28) 1546 Washer, Fiber 5/16" x 7/16" x .015" |
| 13) 2069 Plug 4 Pin | 29) 1402 Drive Motor Spring Pin |
| 14) 3344 Drive Motor Plug Wire Harness DMC | 30) 1050 E Ring 5/16" |
| 15) 2370 HHCS 1/4-28 x 1 1/4" | 31) 1818 Drive Motor Spring Type 3 |
| 16) 2140 Drive Motor Wheel Assy | 32) 3009 HHCS 1/4-28 x 3 3/4" |
| 17) 2362 Drive Motor Wheel Assy | 33) 1128 Bushing Plastic 1/2" |
| 18) 2066 Bearing Drive Wheel 7/8 OD x 3/8 ID | 35) 2796 Drive Motor Adjustment Plate Assy Type 4 |
| 19) 2224 Retaining Ring Internal 7/8" | |
| 20) 1633 Drive Motor Wheel Spacer Type 3 | |
| 21) 1632 Drive Motor Wheel Shield Type 3 | |
-

DMC Arm

- 1) 3367 Arm Spindle Assy. DMC
- 2) 3335 Arm Lamp Socket (with plug) type 3 (includes items 4 & 5)
- 3) 3305 Bulb 24v Push-In
- 4) 1837 Plug, 2 Circuit CPS
- 5) 1708 Pin, CPS
- 6) 1071 Screw PTH 10-32 x 3/8"
- 7) 1838 Receptacle, 2 Circuit CPS
- 8) 1709 Socket, CPS
- 9) 1183 Arm Bearing Spacer
- 10) 1065 Screw PTH 6-32 x 1/4"
- 11) 2068 Receptacle 4 Pin
- 12) 2367 HWHS 1/4-20 x 5/8"
- 13) 1839 Plug, 6 Circuit CPS
- 14) 2063 Socket, CPC
- 15) 1075 Flatwasher #10
- 16) 3297 Arm Light Cover type 3



DMC Drive Motor



DMC Arm

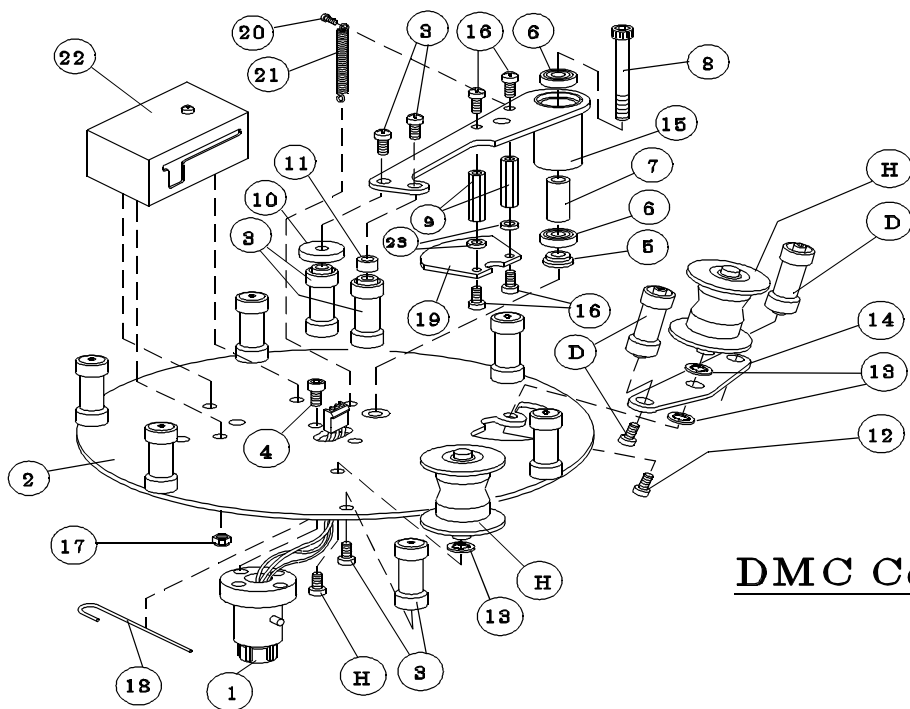
DMC Control Plate

3302 Control Plate Assembly, Plug-in DMC

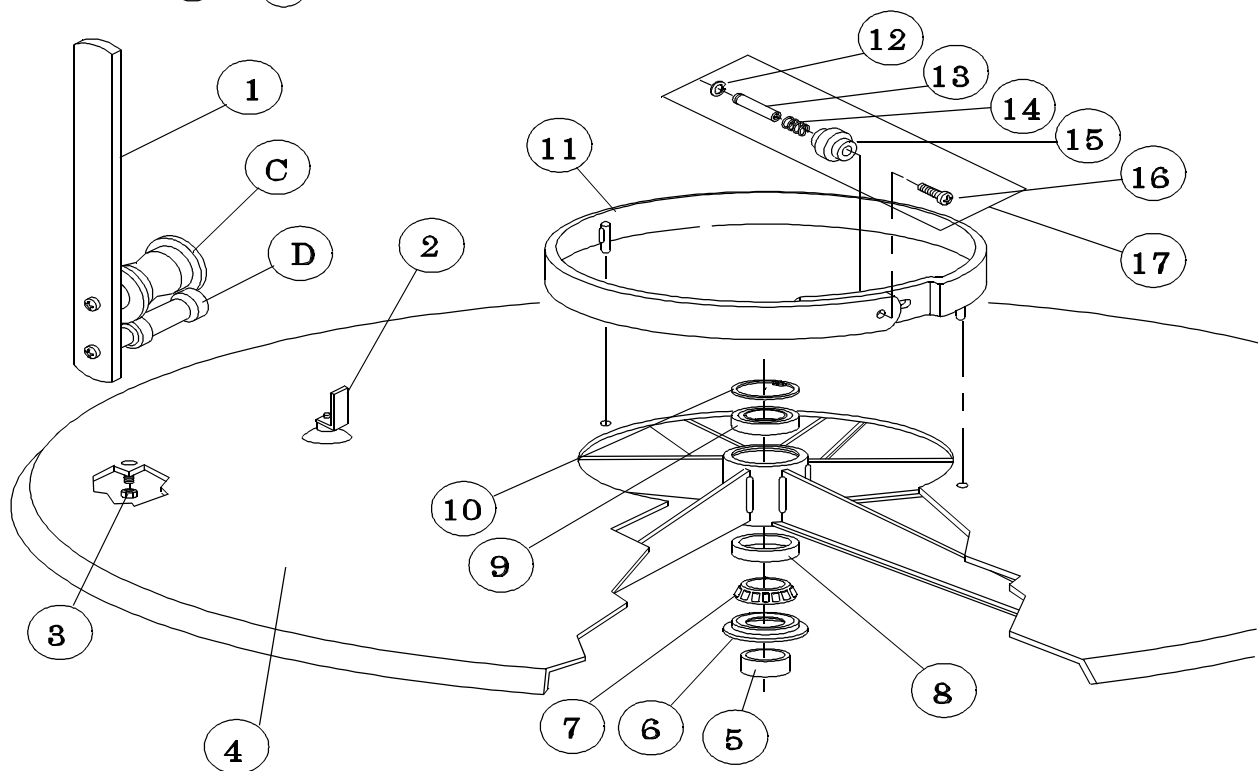
- | | |
|---|--|
| D) 2602 Keeper Shaft & Spool Assy. | 10) 2006 Control Plate Arm Film
Spacer |
| H) 1774 Pulley Shaft #5 & Pulley
Assy. 35 mm | 11) 1153 Control Plate Arm Spool Spacer Float |
| 1) 3357 Control Plate Plug-In adaptor,
DMC (includes item 4) | 12) 1592 SHCS, 10-32 x 1/2" |
| 2) 1593 Control Plate & Nut Sub-
Assy, 35mm | 13) 1078 Lockwasher #10-Internal Tooth |
| 3) 1513 Control Plate Spool & Shaft
Assy. | 14) 1548 Control Plate Spool Keeper Bracket |
| 4) 1064 SHCS, 8-32 x 3/8" | 15) 3348 Control Plate Sensor Arm & Hub,
DMC |
| 5) 2380 Control Plate Sensor Arm
Washer | 16) 1069 Screw, PTH 8-32 x 3/8" |
| 6) 2407 Bearing, 5/8 OD x 1/4" ID | 17) 1032 Nylon Locknut, 4-40 |
| 7) 2379 Control Plate Sensor Arm
Spacer | 18) 2171 Phase Control Mask Spring |
| 8) 2408 SHCS, 1/4-28 x 2" | 19) 2906 Control Plate Sensor Mask, DMC |
| 9) 3422 Spacer, 1/4" hex brass, 8-32 x
1.072" | 20) 3353 SHCS, 2-56 x 1/4" |
| | 21) 3338 Control Plate Arm Return Spring,
DMC |
| | 22) 3358 Digital Motor Control (Control Plate) |

DMC Disk, Center Ring & Projector Arm

- | | |
|--|--|
| C) 1447 Pulley Shaft #6 & Pulley Assy
35mm | 8) 1257 Disk Lower Bearing Race Cup |
| D) 2602 Keeper Shaft & Spool Assy | 9) 1254 Disk Upper Bearing |
| 1) 1515 Projector Arm Assy 35mm | 10) 1255 Disk Upper Bearing Retaining
Ring |
| 2) 2225 Disk Suction Cup Assy | 11) 1471 Center Ring Assy (includes item
#17) |
| 3) 1084 Locknut, Nylon Insert 6-32 | 12) 1050 E Ring 5/16" |
| 4) 1865 One Disk Crated 52" or
1854 One Disk Crated 42" | 13) 1265 Shaft #9 |
| 5) 1183 Arm Bearing Spacer | 14) 1266 Center Ring Knob Spring |
| 6) 1258 Disk Lower Bearing Grease
Retainer | 15) 1264 Center Ring Knob |
| 7) 1256 Disk Lower Bearing | 16) 1070 Screw PFH 8-32 x 3/8" |
| | 17) 1827 Center Ring Knob Assy |



DMC Control Plate



DMC Disk, Center Ring & Projector Arm