

Film-Tech

The information contained in this Adobe Acrobat pdf file is provided at your own risk and good judgment.

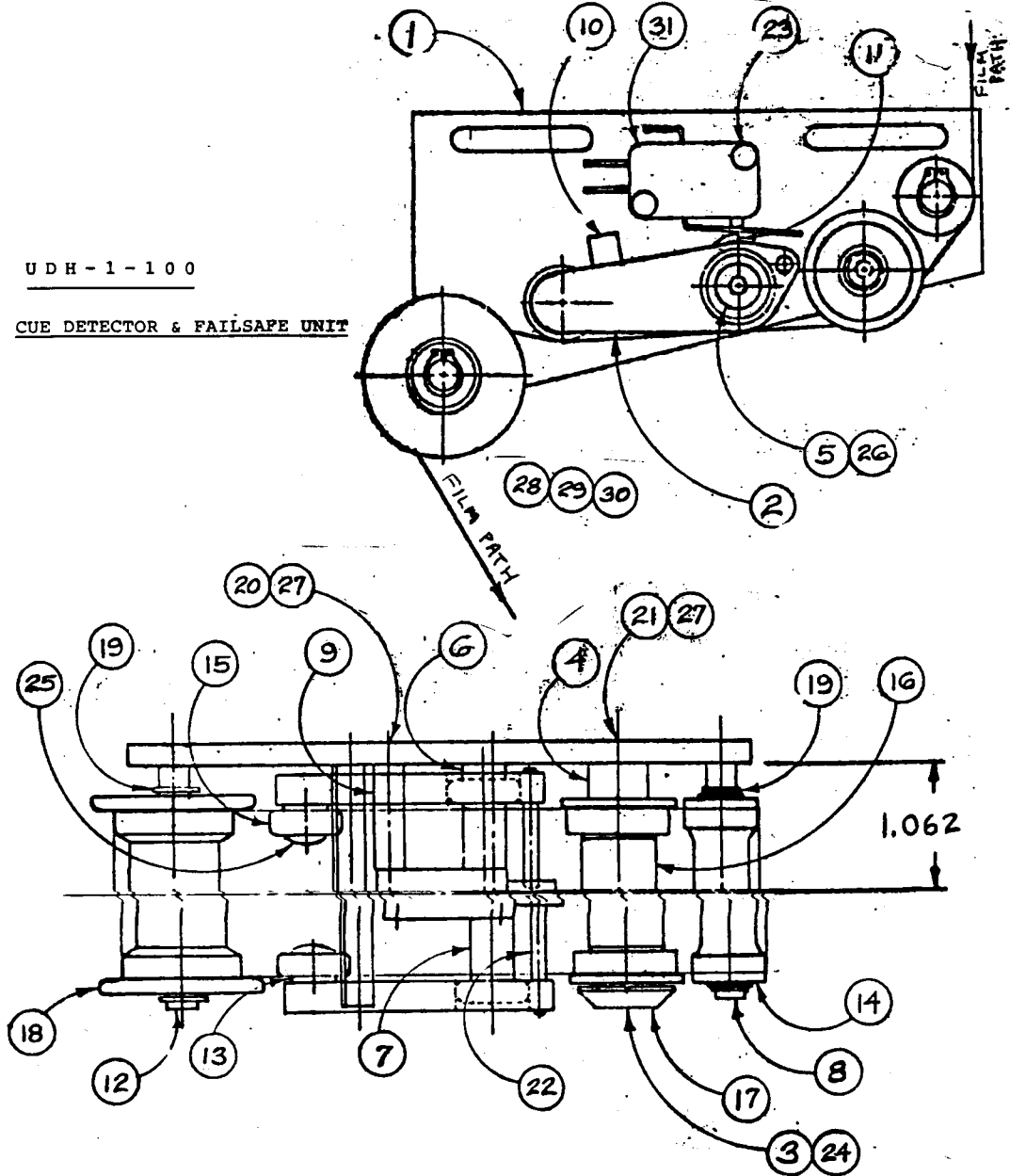
These manuals are designed to facilitate the exchange of information related to cinema projection and film handling, with no warranties nor obligations from the authors, for qualified field service engineers.

If you are not a qualified technician, please make no adjustments to anything you may read about in these Adobe manual downloads.

www.film-tech.com

UDH-1-100

CUE DETECTOR & FAILSAFE UNIT



UDH-1-100
LIST OF MATERIALS

| ITEM NO. | PART NO. | QTY. | REQ. | DESCRIPTION |
|----------|-----------------|------|------|--|
| -- | UDH-1-100 | X | | UNIVERSAL CUE DETECTOR - FAILSAFE ASSY. |
| 1 | UDH-1-101 | 1 | | BASE PLATE |
| 2 | UDH-1-102 | 2 | | FAILSAFE ARM |
| 3 | UDH-1-103 | 1 | | CUE DETECTOR STUD |
| 4 | UDH-1-104 | 1 | | INSULATING SPACER |
| 5 | UDH-1-105 | 1 | | FAILSAFE ARM SHAFT |
| 6 | UDH-1-106-1 | 1 | | FAILSAFE ARM SHAFT INNER SPACER |
| 7 | UDH-1-106-2 | 2 | | FAILSAFE ARM SHAFT CENTER SPACER |
| 8 | UDH-1-107 | 1 | | GROUND ROLLER SHAFT |
| 9 | UDH-1-103 | 2 | | FAILSAFE SWITCH STANDOFF |
| 10 | UDH-1-109 | 1 | | ARM UPPER LIMIT STOP |
| 11 | UDH-1-111 | 1 | | ARM LOWER LIMIT STOP |
| 12 | UDH-1-119 | 1 | | IDLER ROLLER SHAFT |
| 13 | VDH-4-97 | 2 | | FAILSAFE ARM BEARING SPACER |
| 14 | CDH-1-35 | 1 | | GROUND ROLLER |
| 15 | R422/1W | 4 | | BALL BEARING (NTN OR EQUIV.) |
| 16 | PCD-751 | 1 | | BEARING SPACER |
| 17 | PCD-754 | 1 | | END CAP |
| 18 | 720336 | 1 | | FILM BY-PASS ROLLER WITH BALL BEARINGS |
| 19 | 5100-25 S PF | 4 | | EXTERNAL RETAINING RING (WALDES TRUARC) |
| 20 | 4-40 UNC X 3/8 | 2 | | FLAT HEAD CAP SCREW (ALLEN) |
| 21 | 8-32 UNC X 1/2 | 5 | | FLAT HEAD CAP SCREW (ALLEN) |
| 22 | 1/8 DIA. X.1 | 2 | | STANDARD DOWEL PIN (ALLMETAL) |
| 23 | 4-40 UNC X 5/8 | 2 | | PHILLIPS PAN HEAD MACHINE SCREW (ALLMETAL) |
| 24 | 8-32 UNC X 3/8 | 1 | | SOCKET HEAD CAP SCREW (ALLEN) |
| 25 | 10-32 UNF X 1/2 | 2 | | BUTTON HEAD CAP SCREW (ALLEN) |
| 26 | 10-32 UNF X 1/4 | 1 | | BUTTON HEAD CAP SCREW (ALLEN) |
| 27 | 290 | A.R. | | ADHESIVE (LOCITE) |
| 28 | 3-32 UNC X 3/8 | 2 | | PHILLIPS PAN HEAD MACHINE SCREW (ALLMETAL) |
| 29 | #8 | 2 | | SPLIT LOCK WASHER (ALLMETAL) |
| 30 | #8 | 2 | | STD. PATTERN FLAT WASHER (ALLMETAL) |

XAK 102 NEW GND ROLLERS