

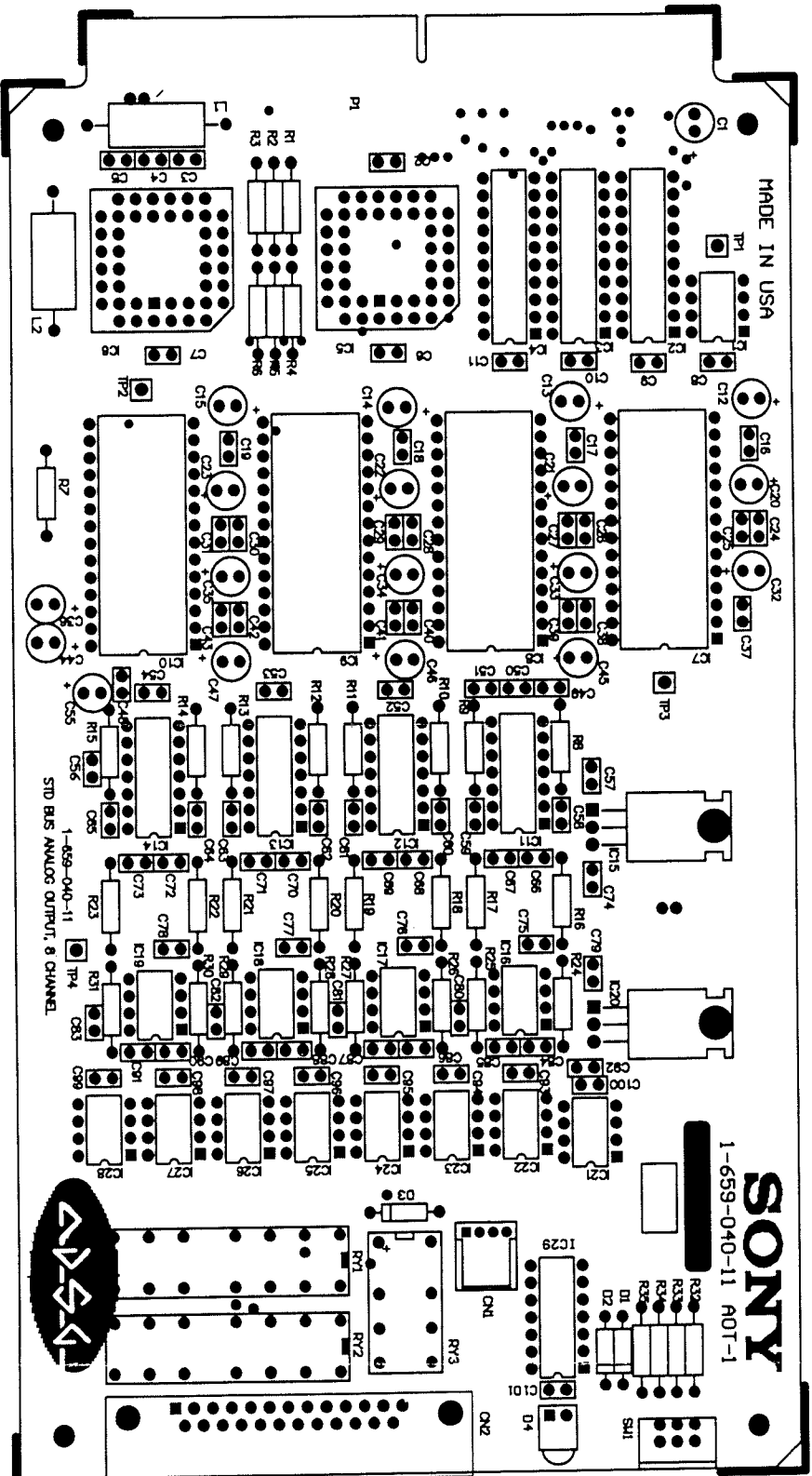
Film-Tech

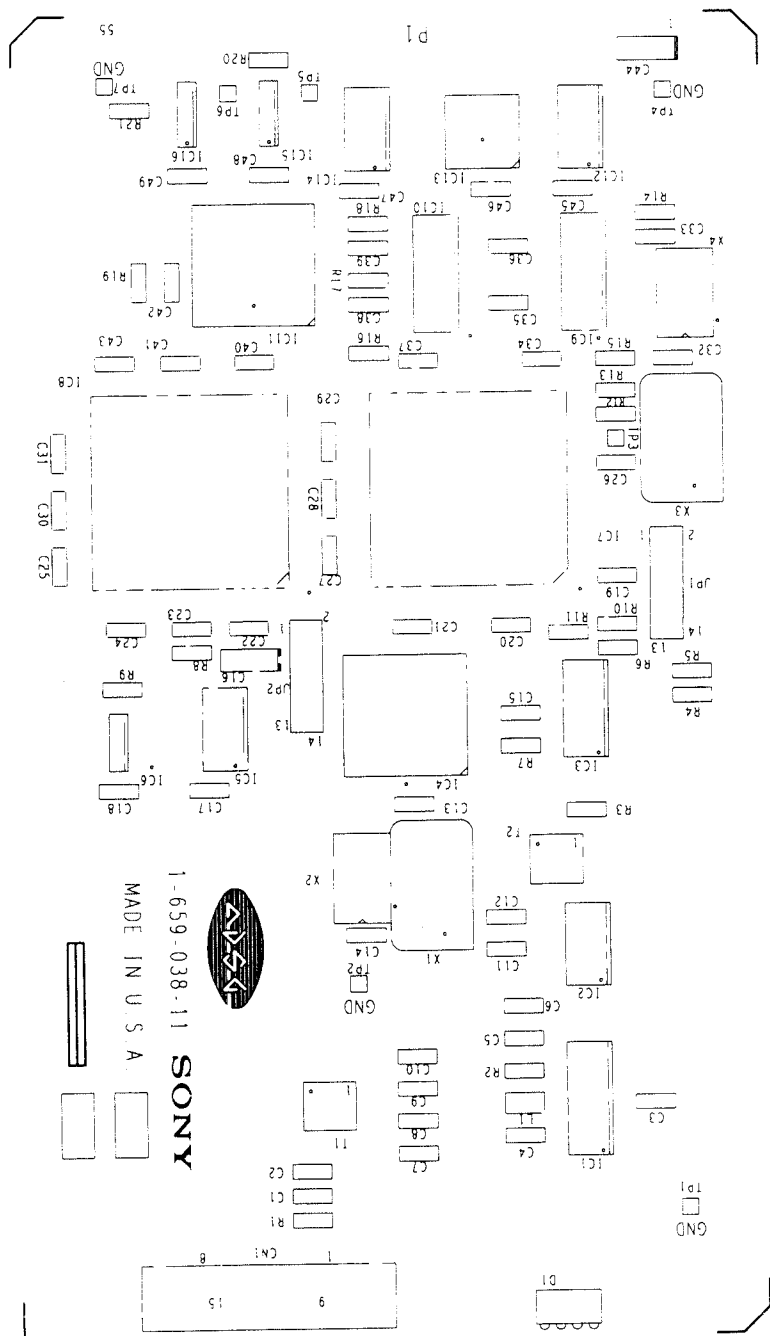
The information contained in this Adobe Acrobat pdf file is provided at your own risk and good judgment.

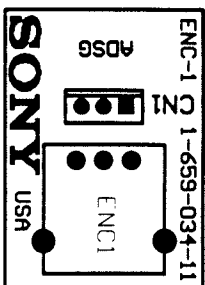
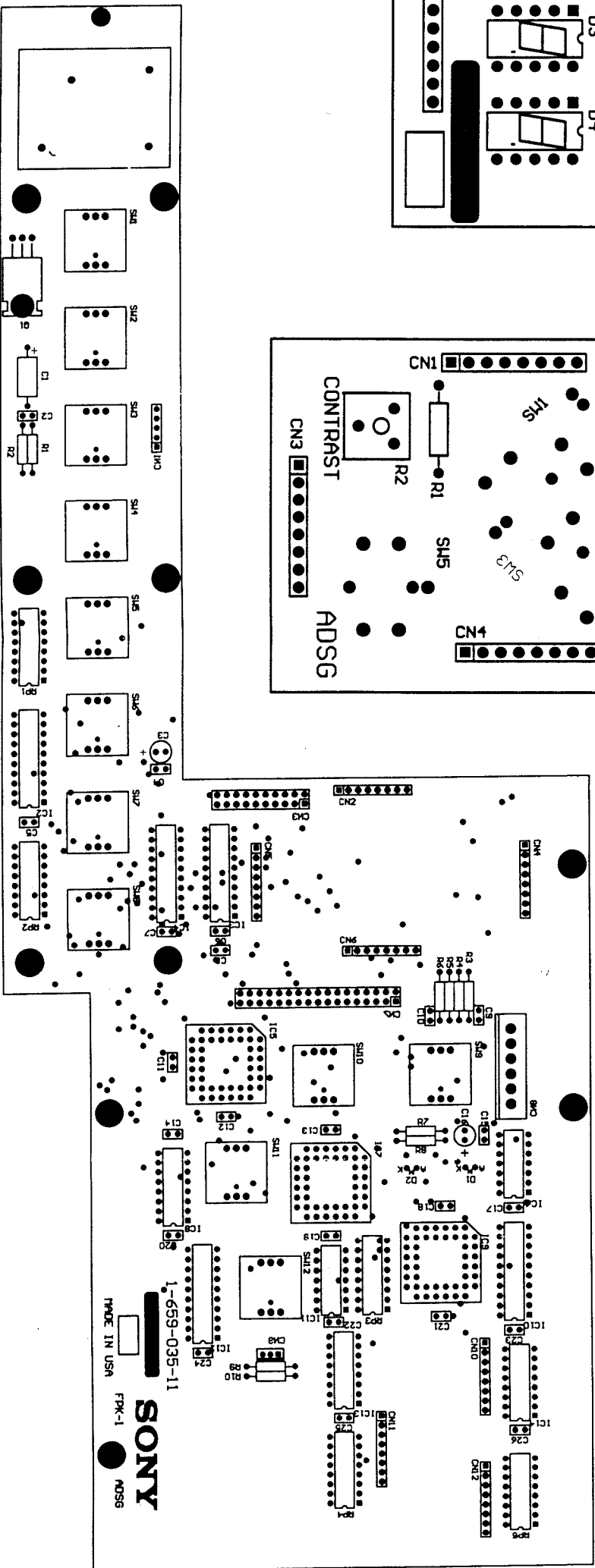
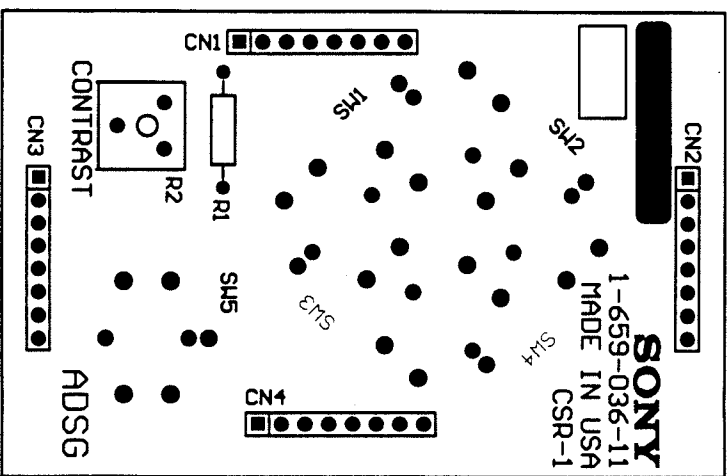
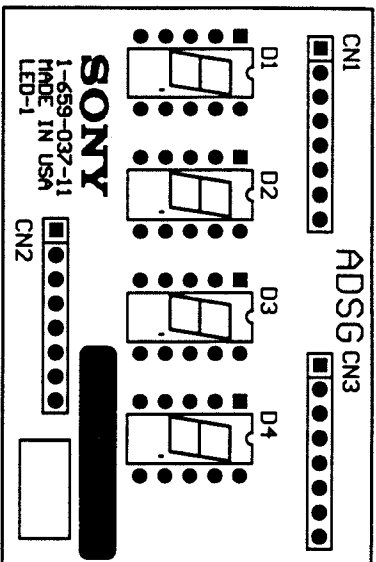
These manuals are designed to facilitate the exchange of information related to cinema projection and film handling, with no warranties nor obligations from the authors, for qualified field service engineers.

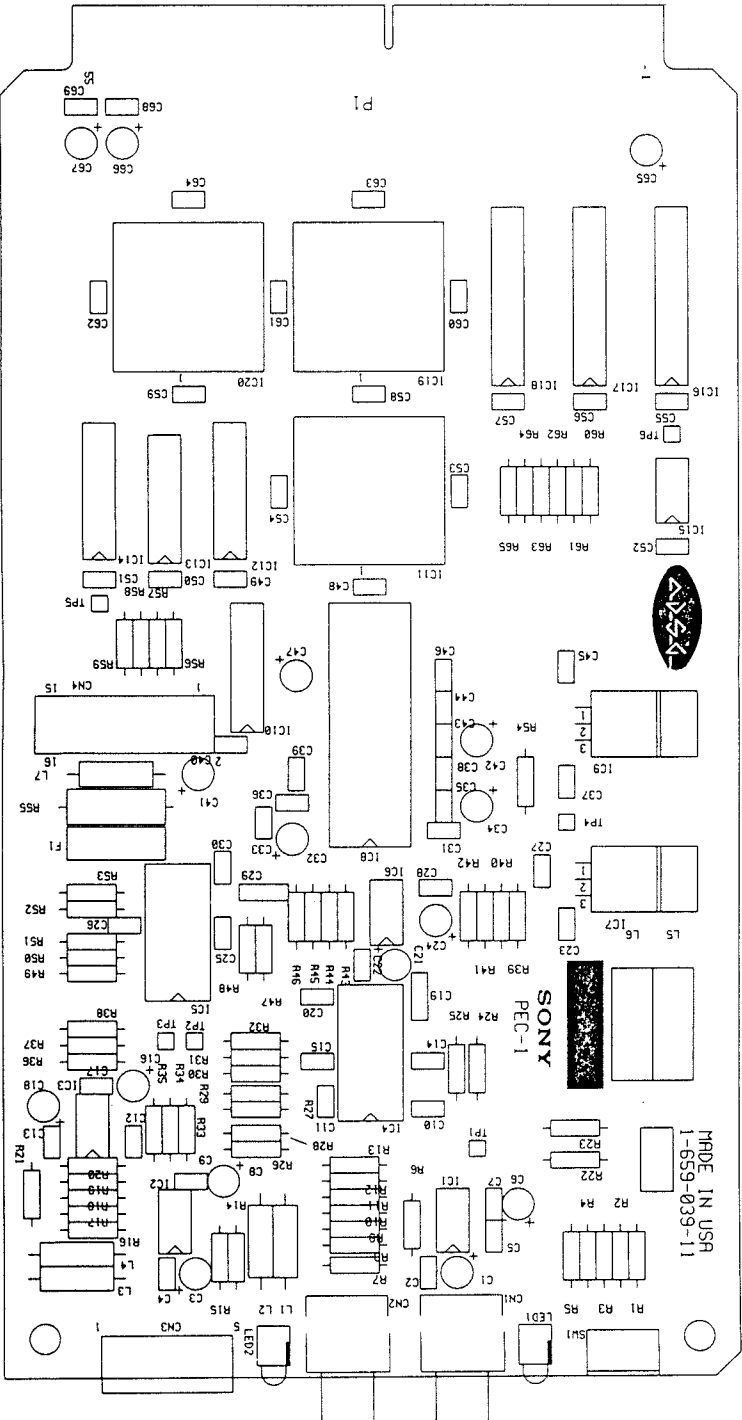
If you are not a qualified technician, please make no adjustments to anything you may read about in these Adobe manual downloads.

www.film-tech.com









SONY
PEC-1

MADE IN USA
1-6559-039-11

9.7 Mother Board

Diagram to come at later date

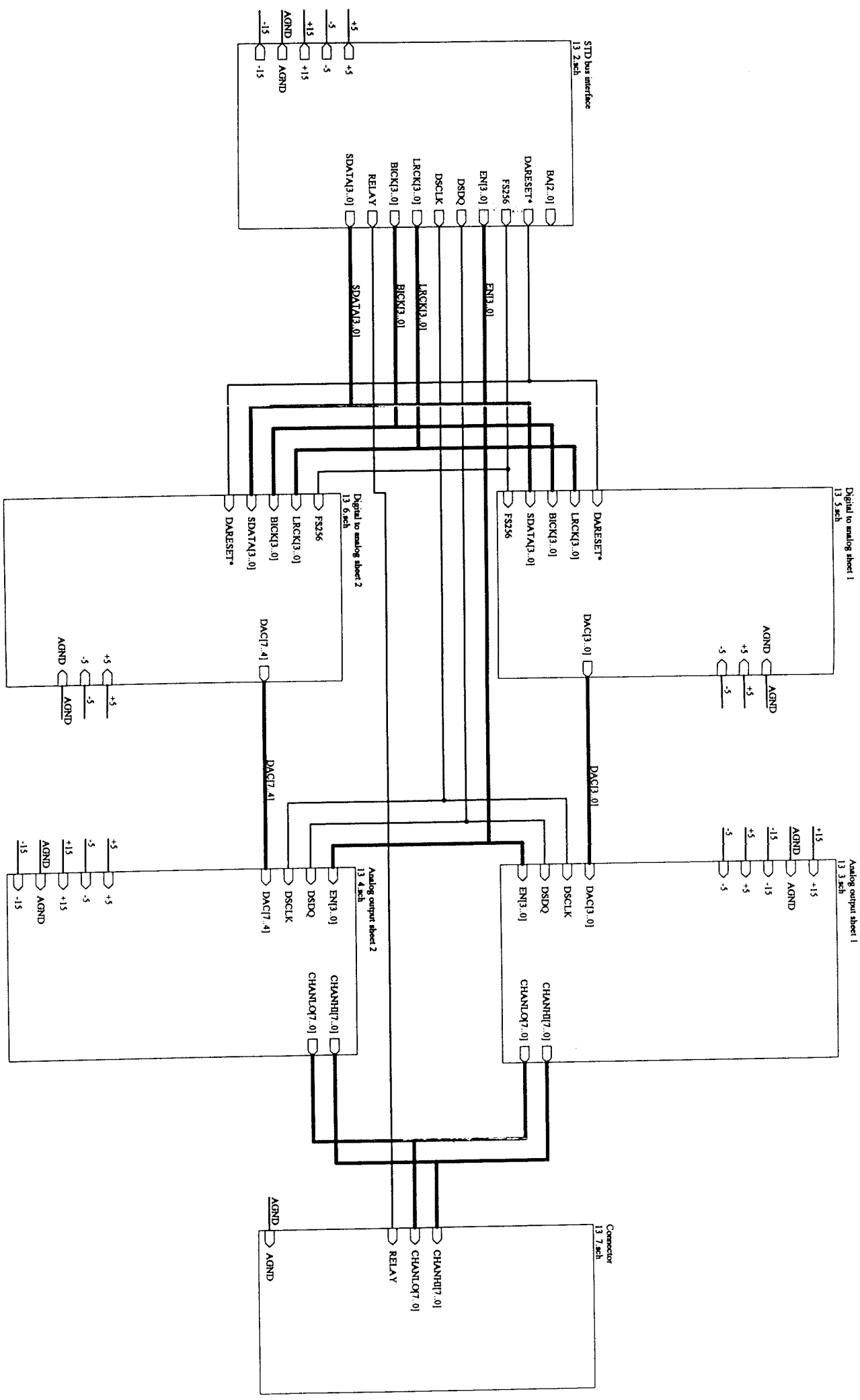
Section 10

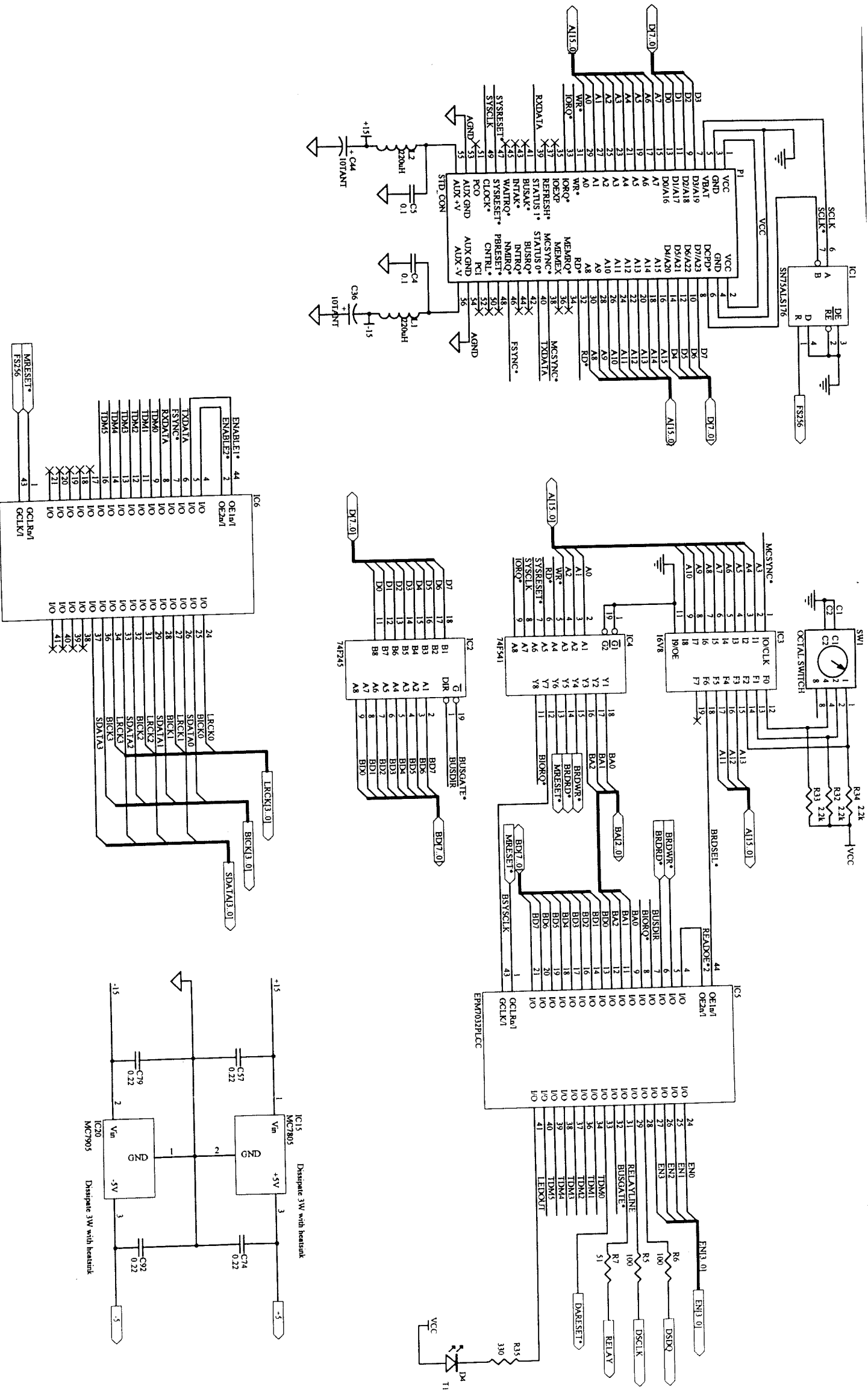
Schematic Diagrams

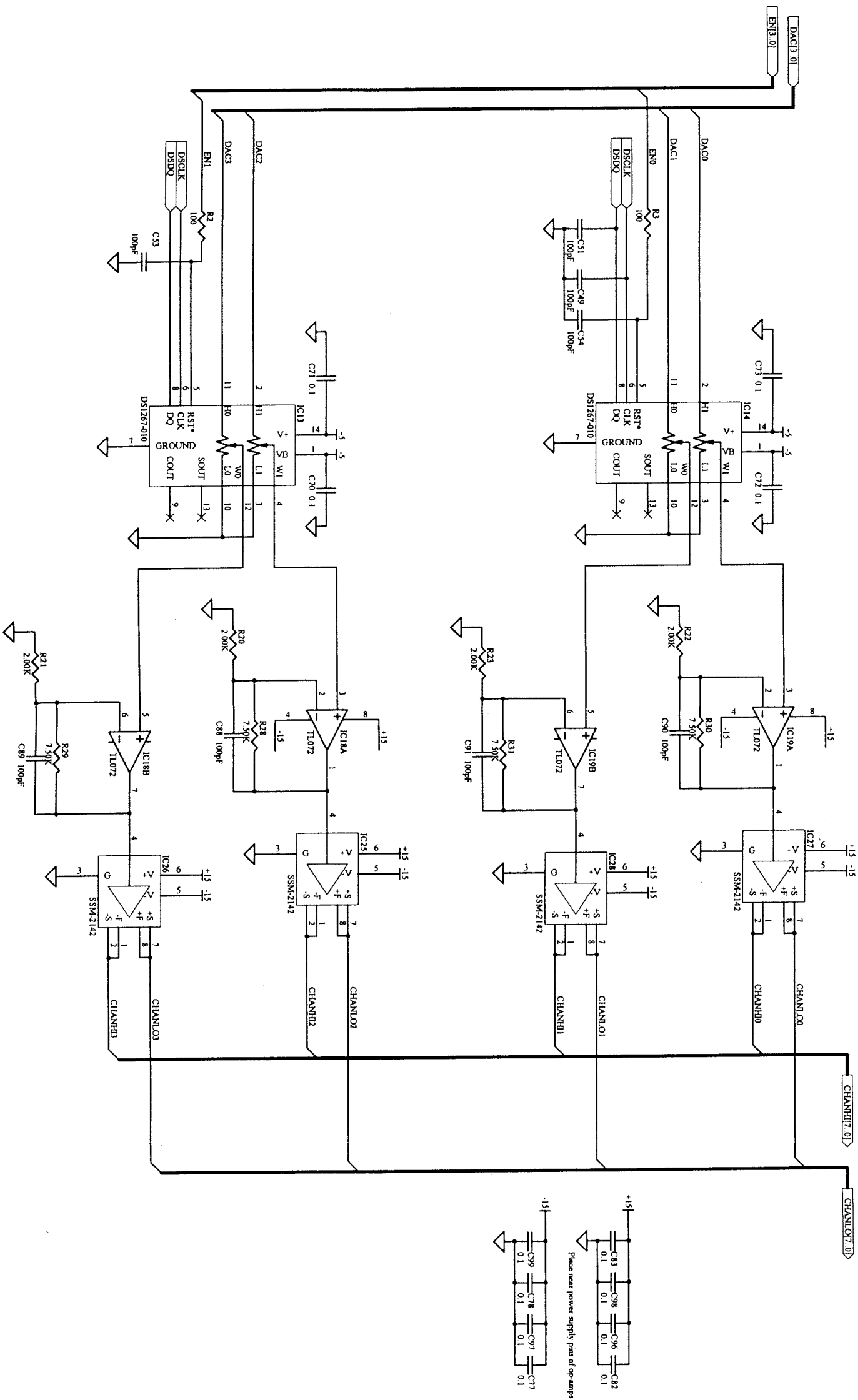
These schematic diagrams are provided for the troubleshooting of the Sony DCP-1000 and related option modules. These schematic diagrams are applicable to DCP-1000 units with serial numbers 10001 and higher.

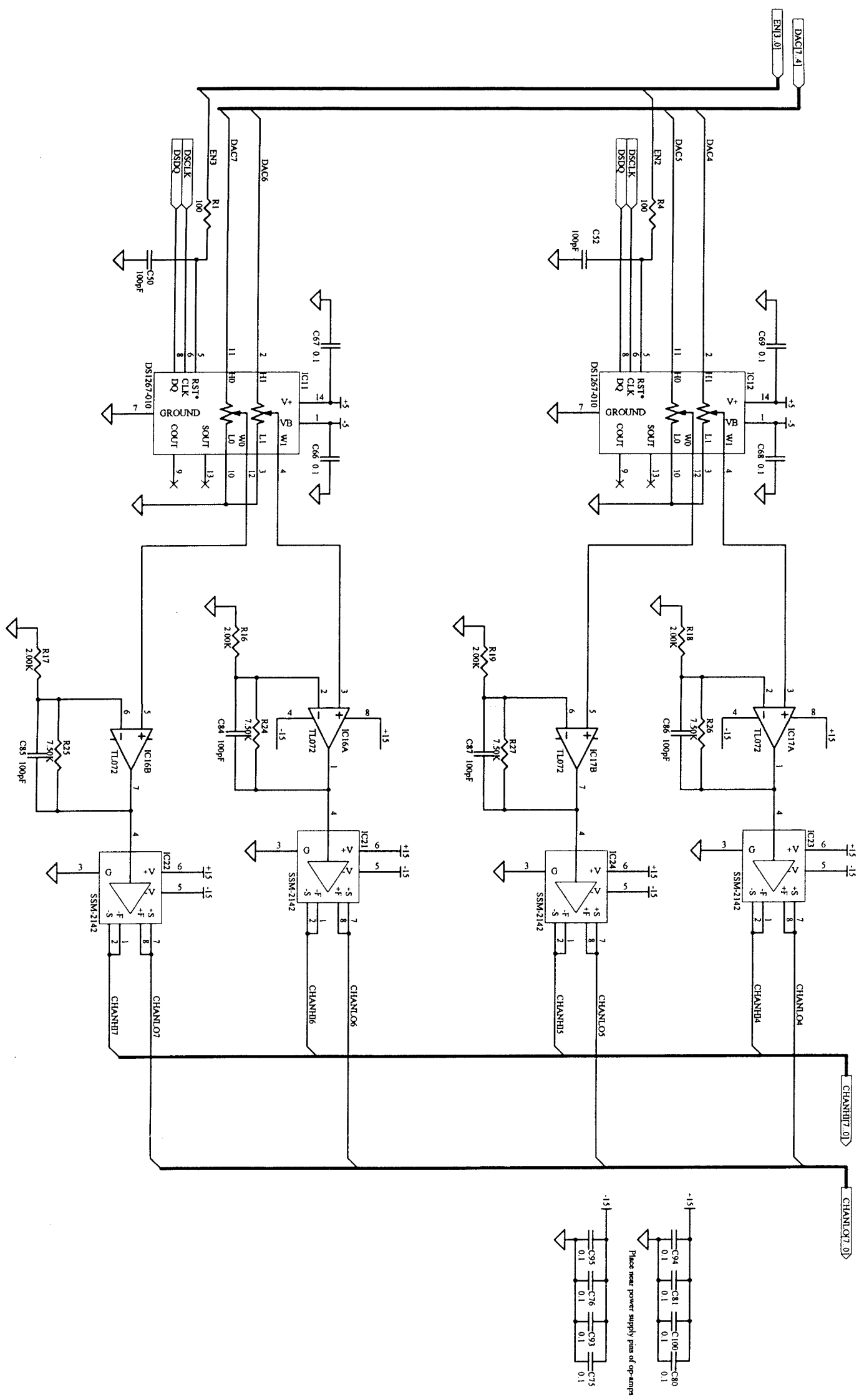
10.1 A-IN Board

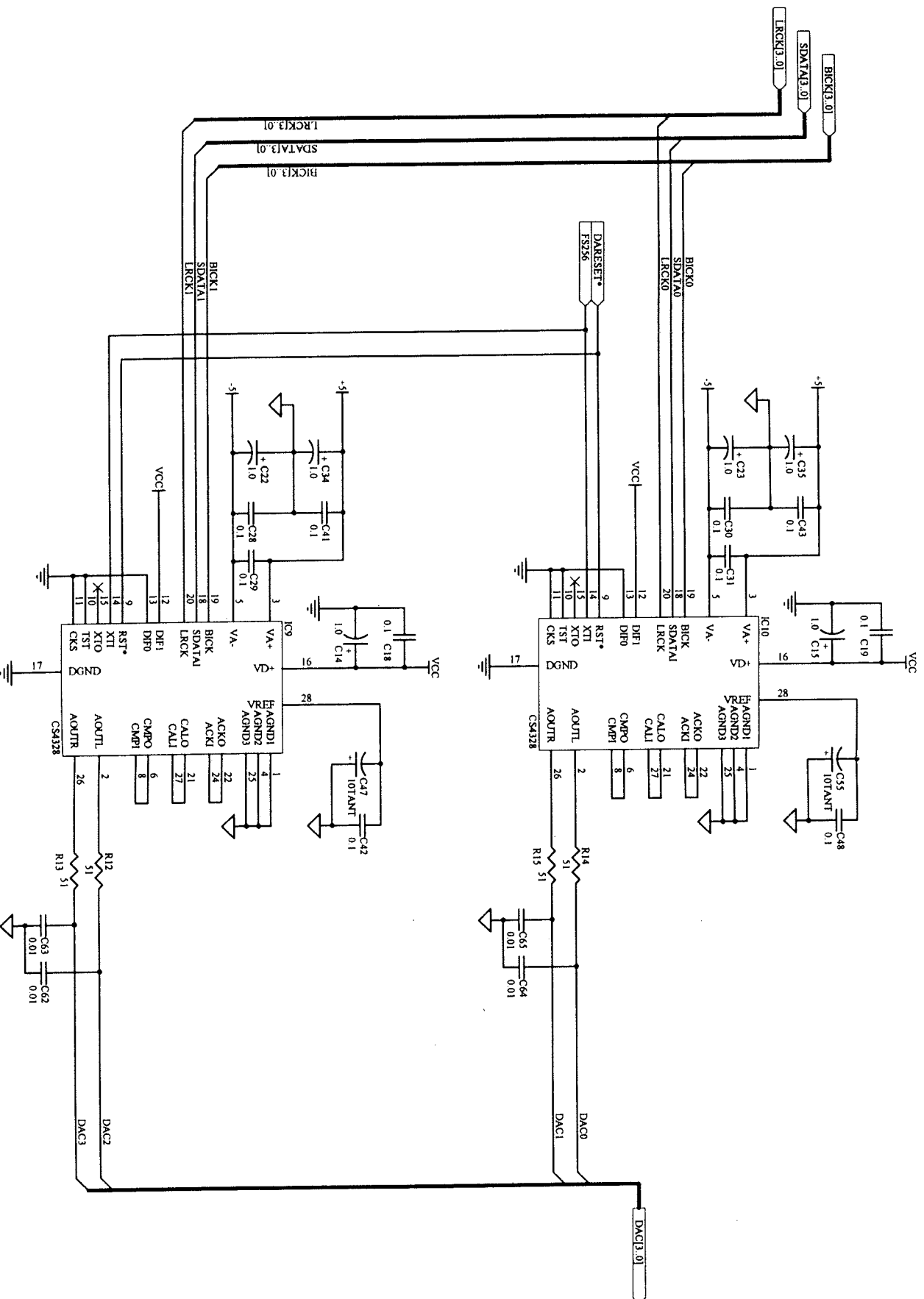
Diagram to come at later date

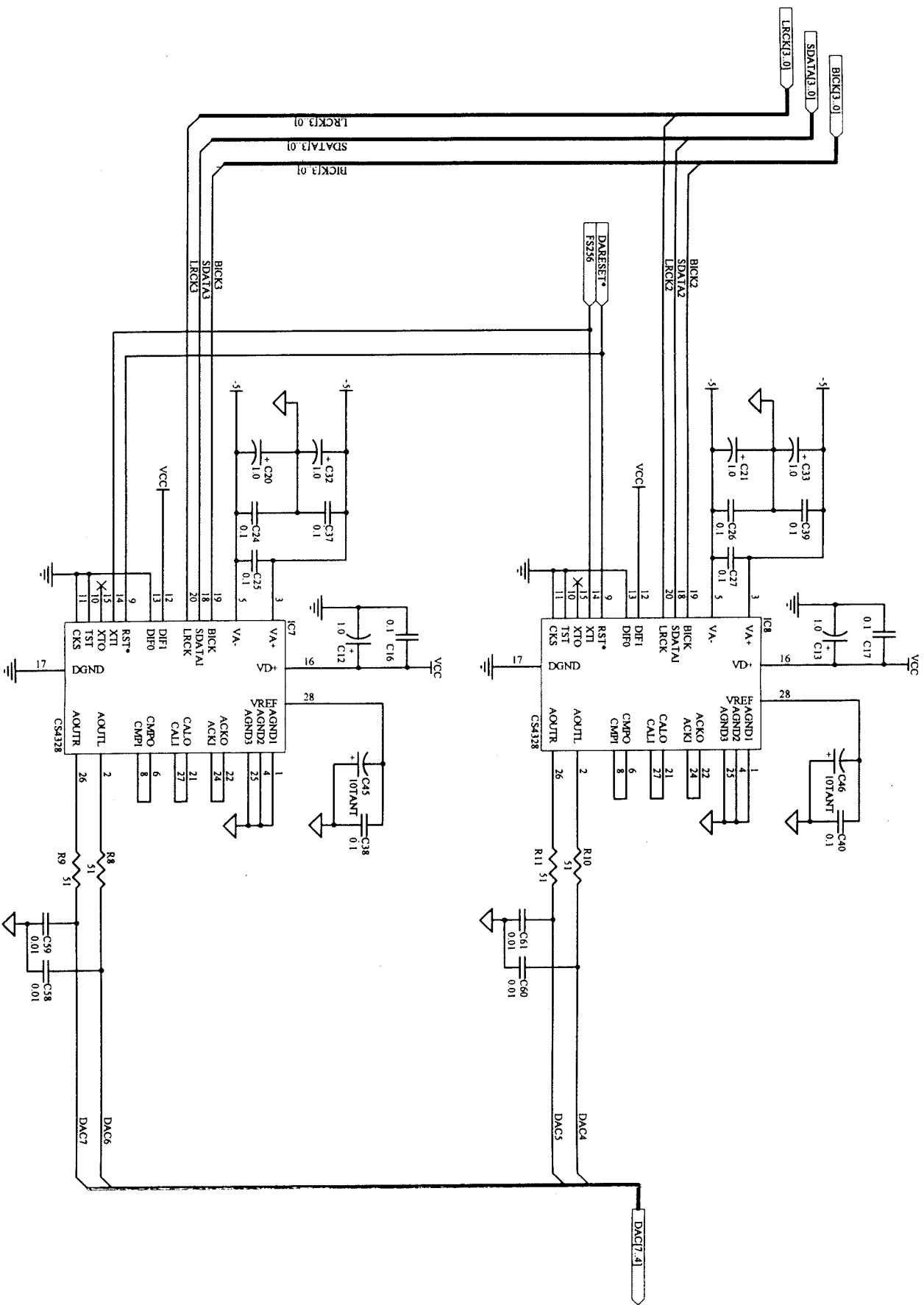


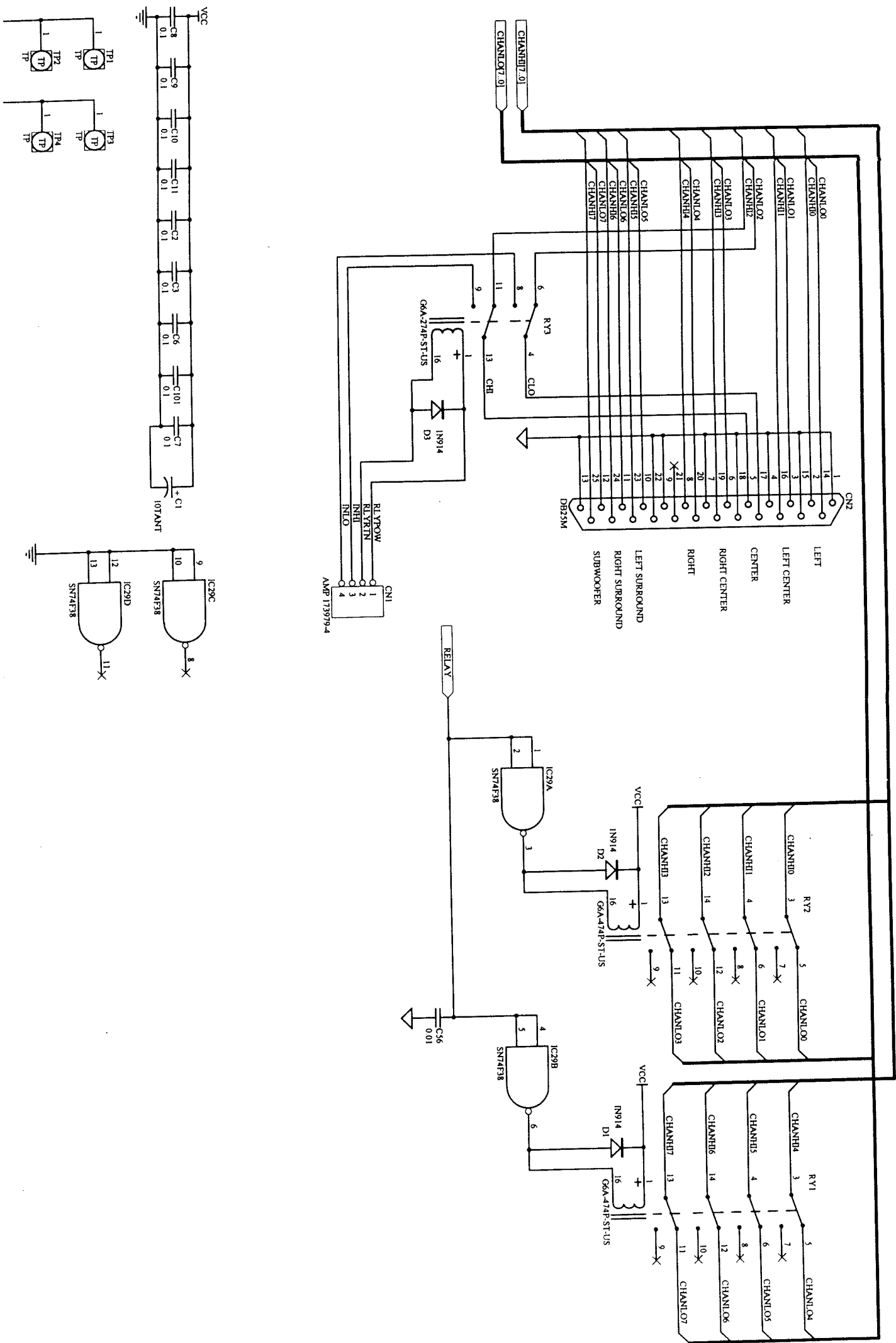


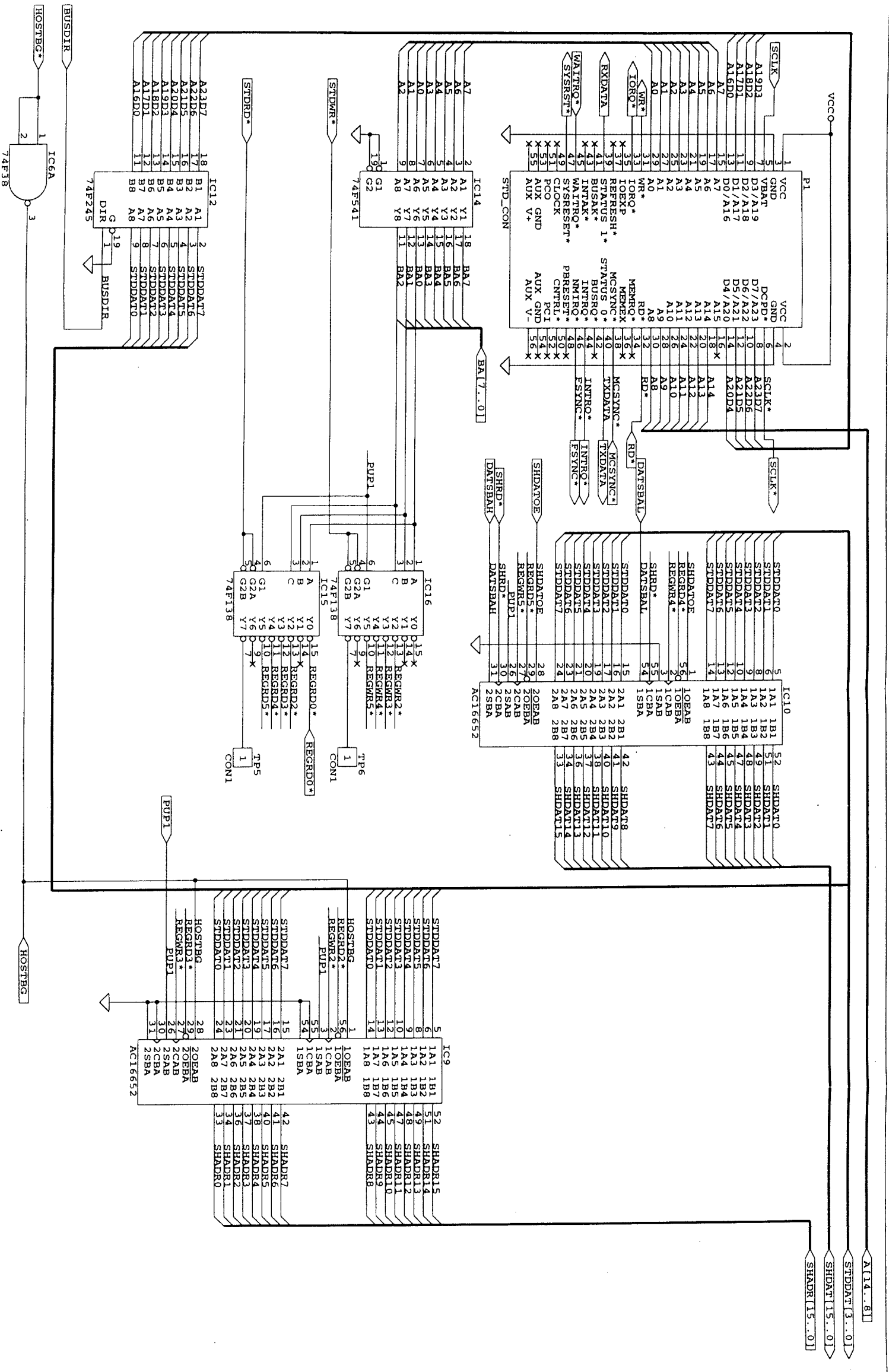


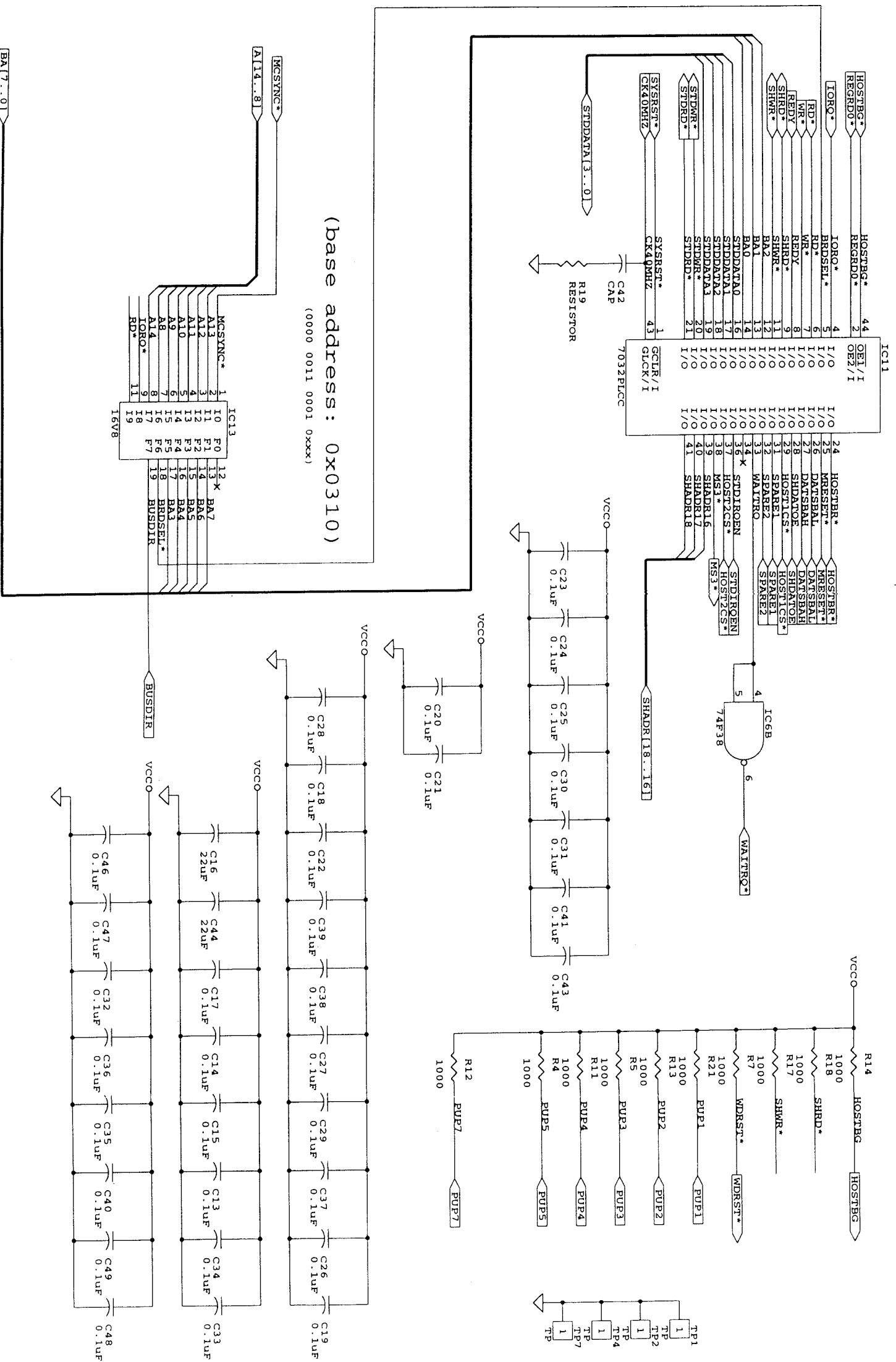


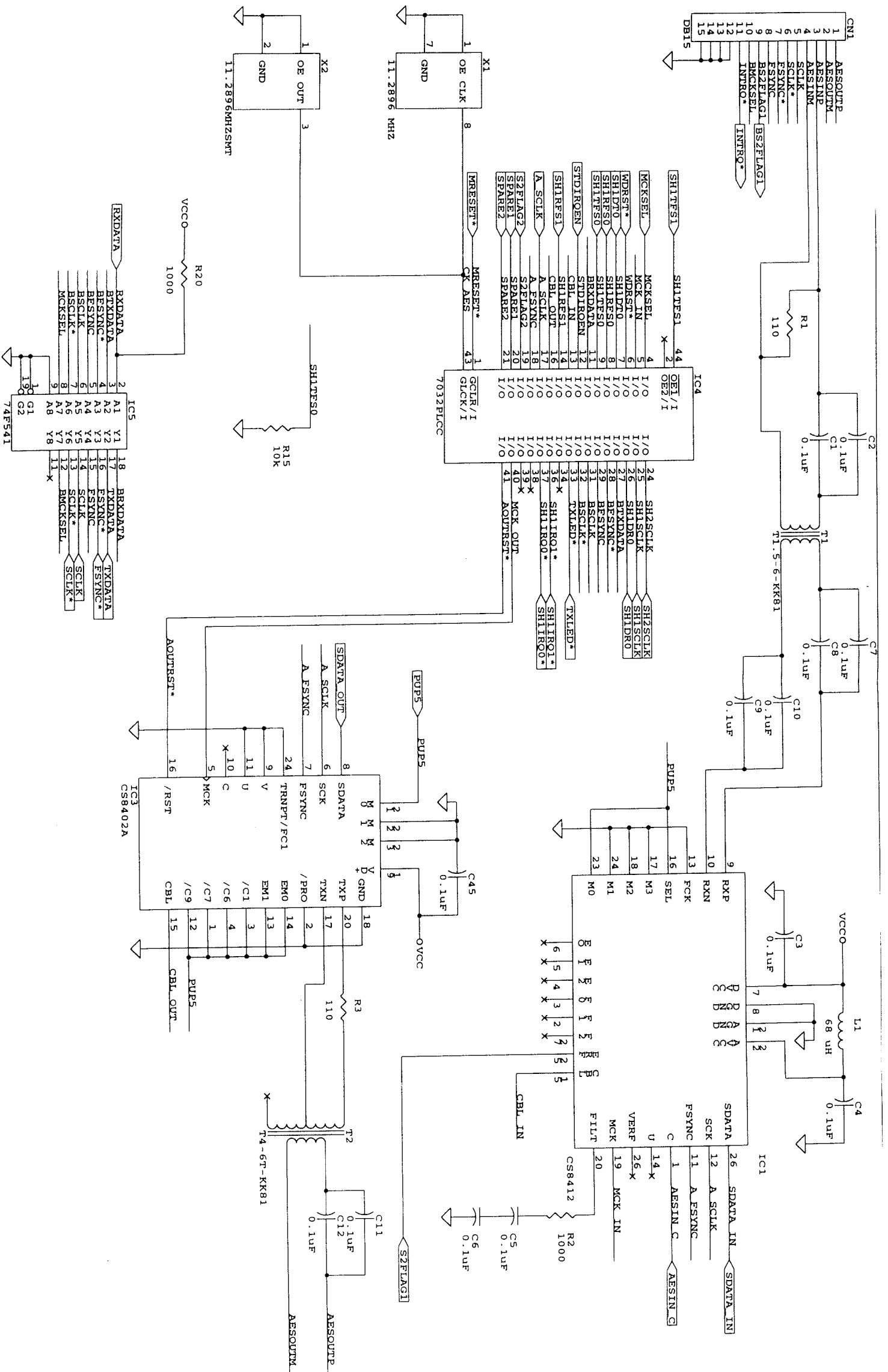






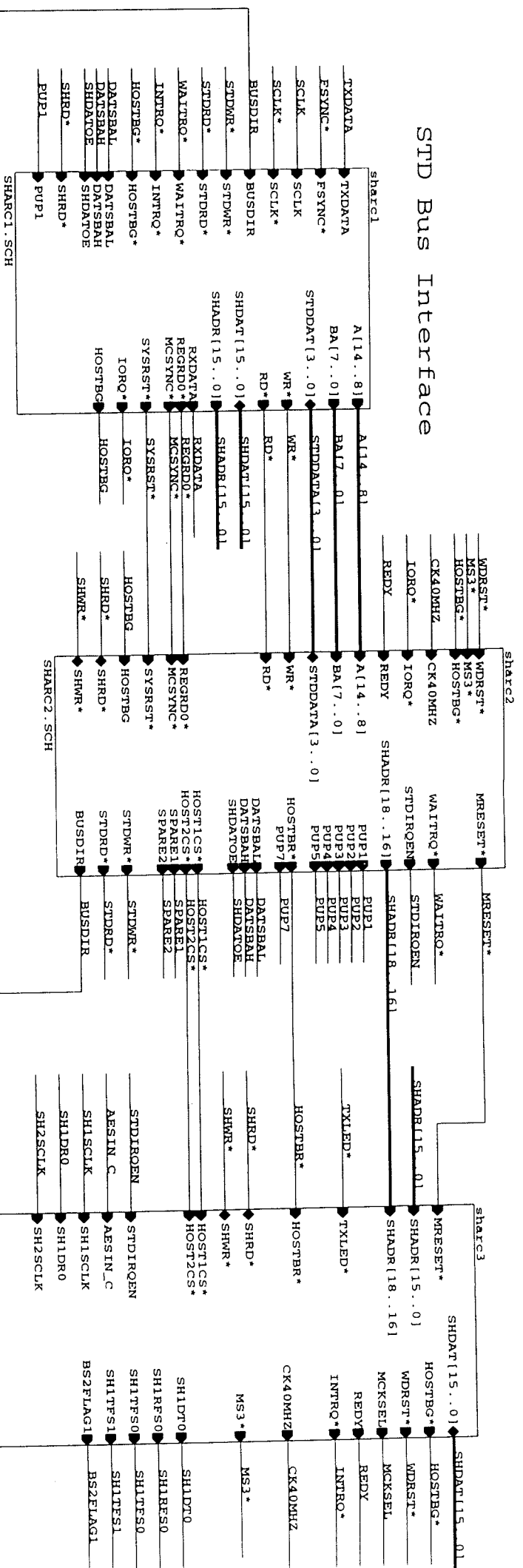




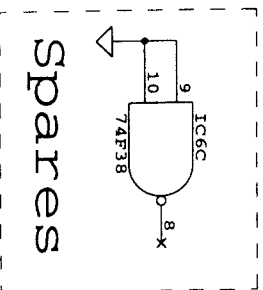


Host Bus Control

STD Bus Interface

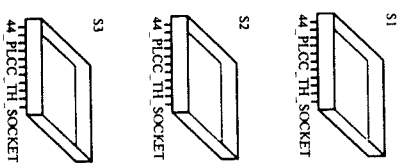
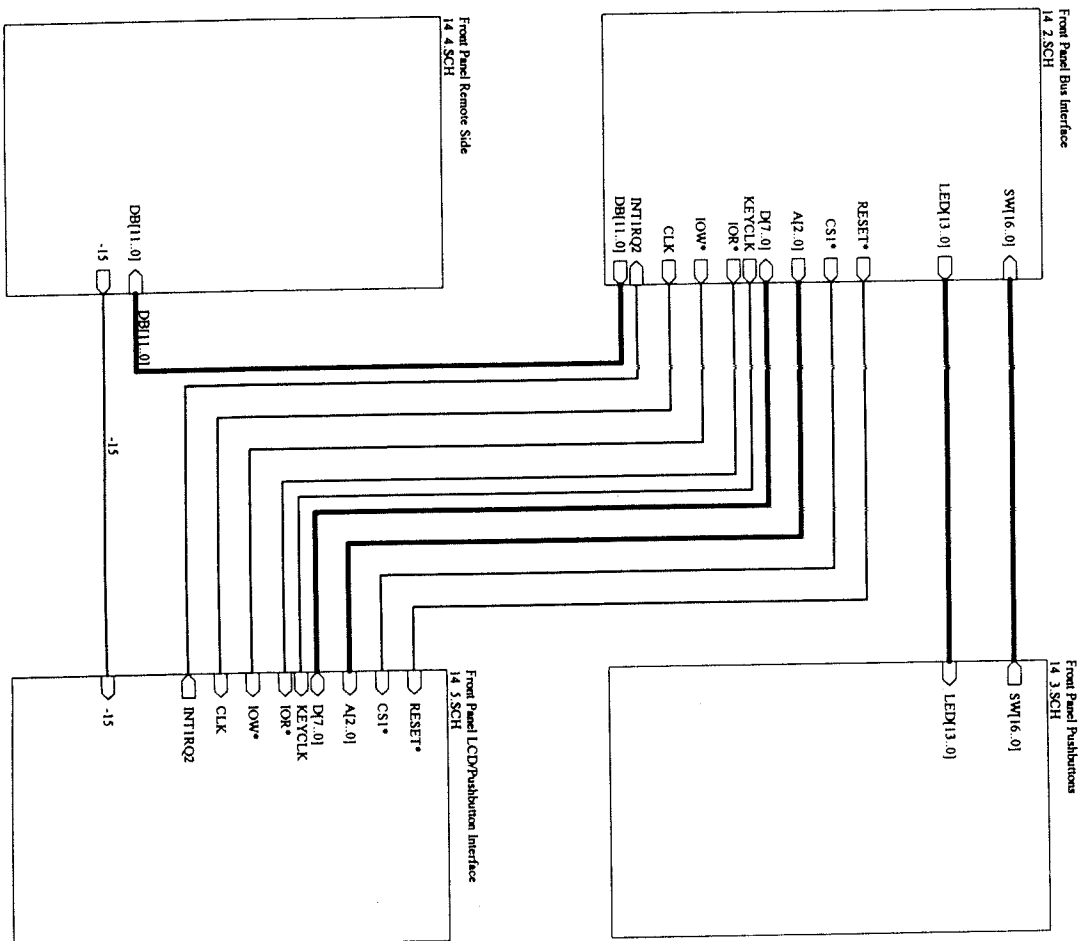


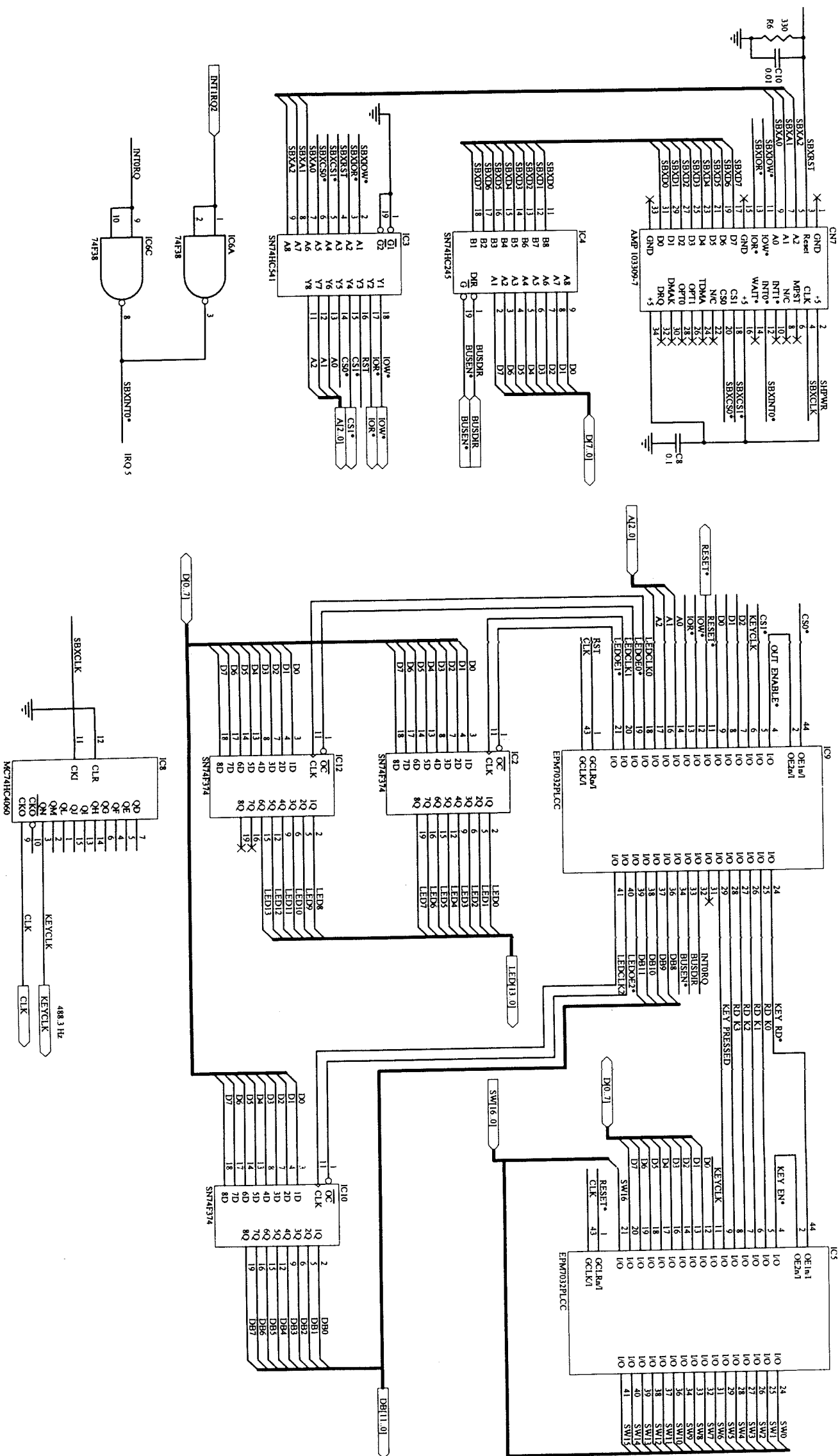
AES Interface



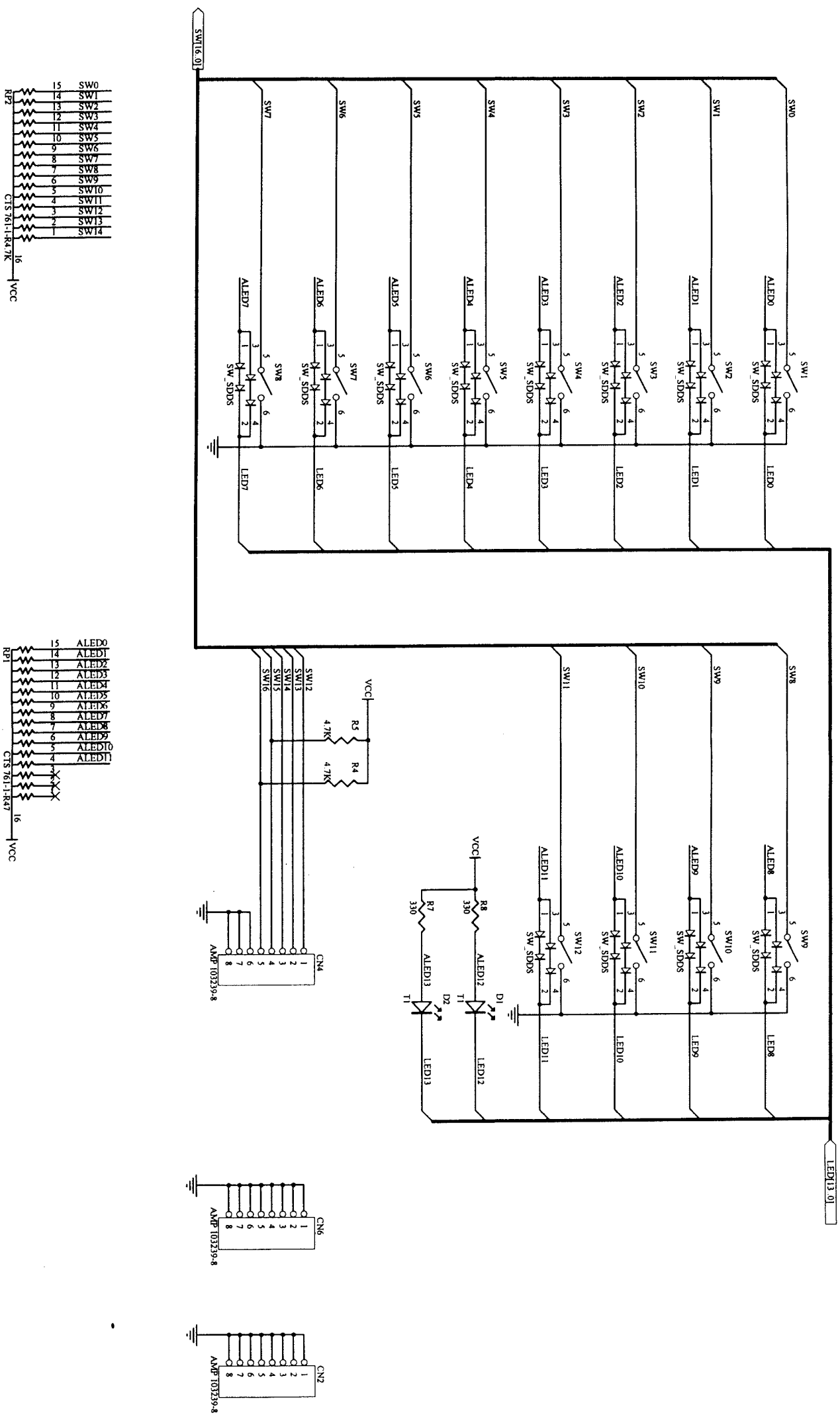
SHARC PROCESSOR'S

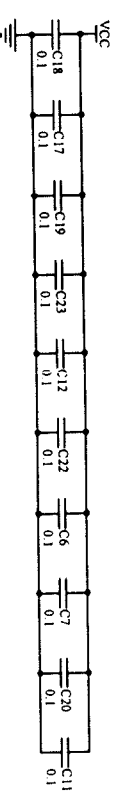
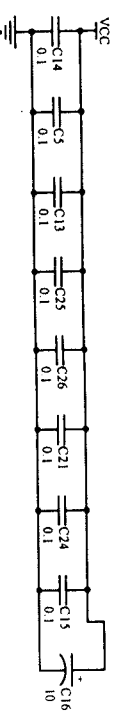
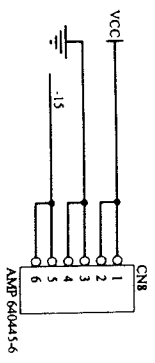
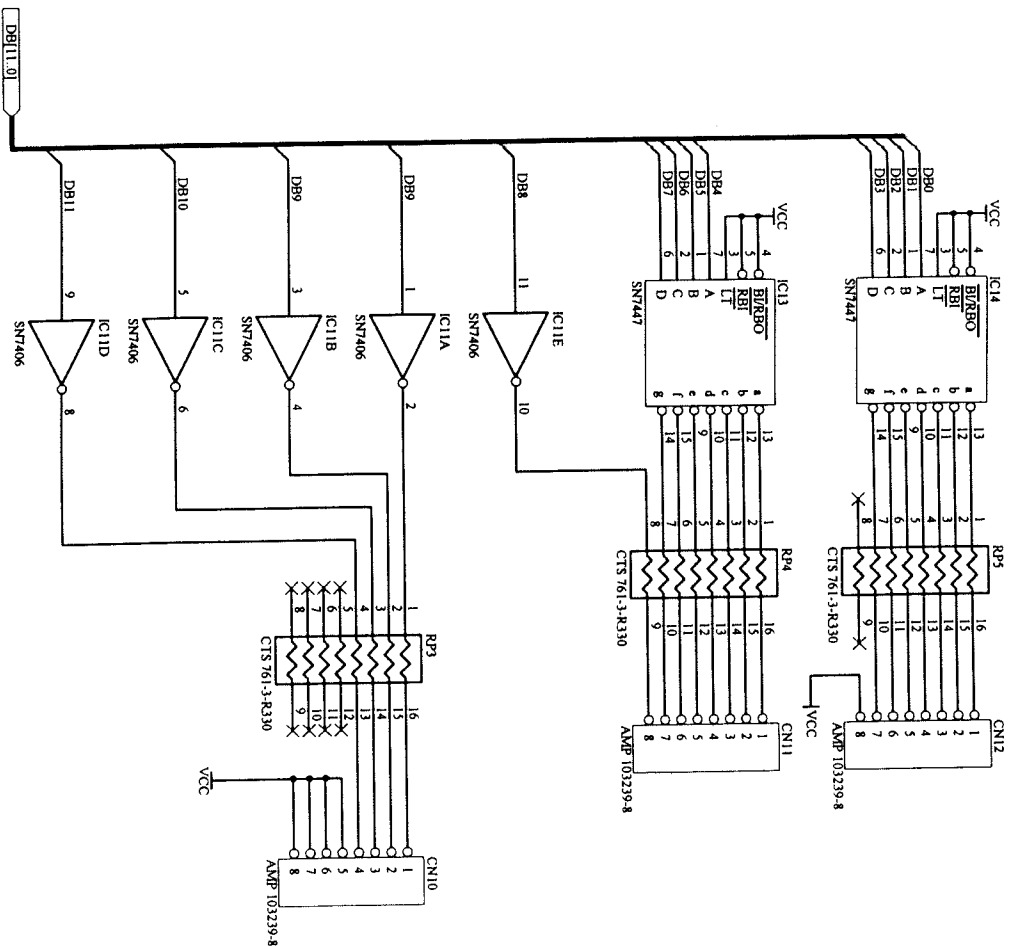
STD SHARC DSP PROCESSOR

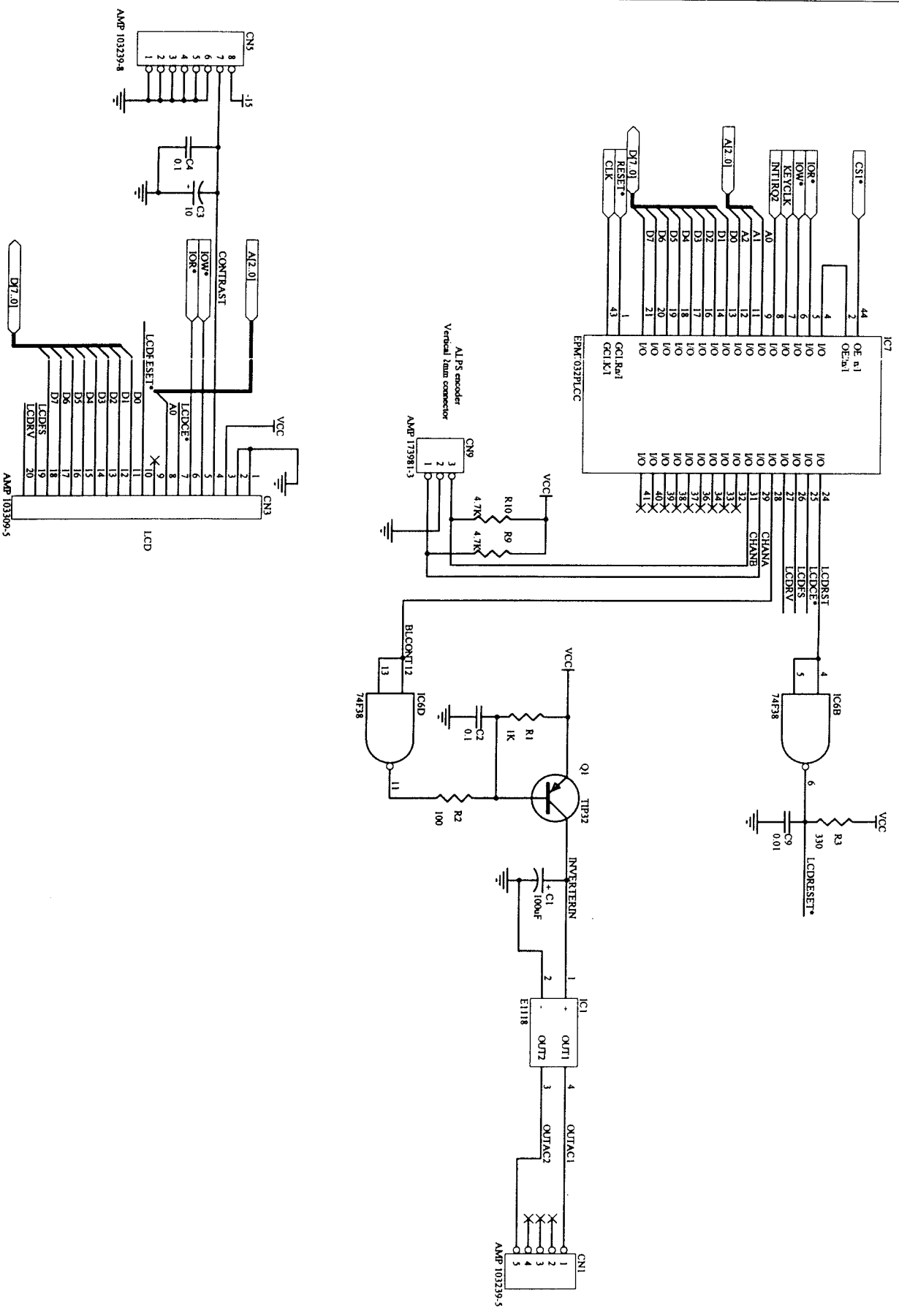


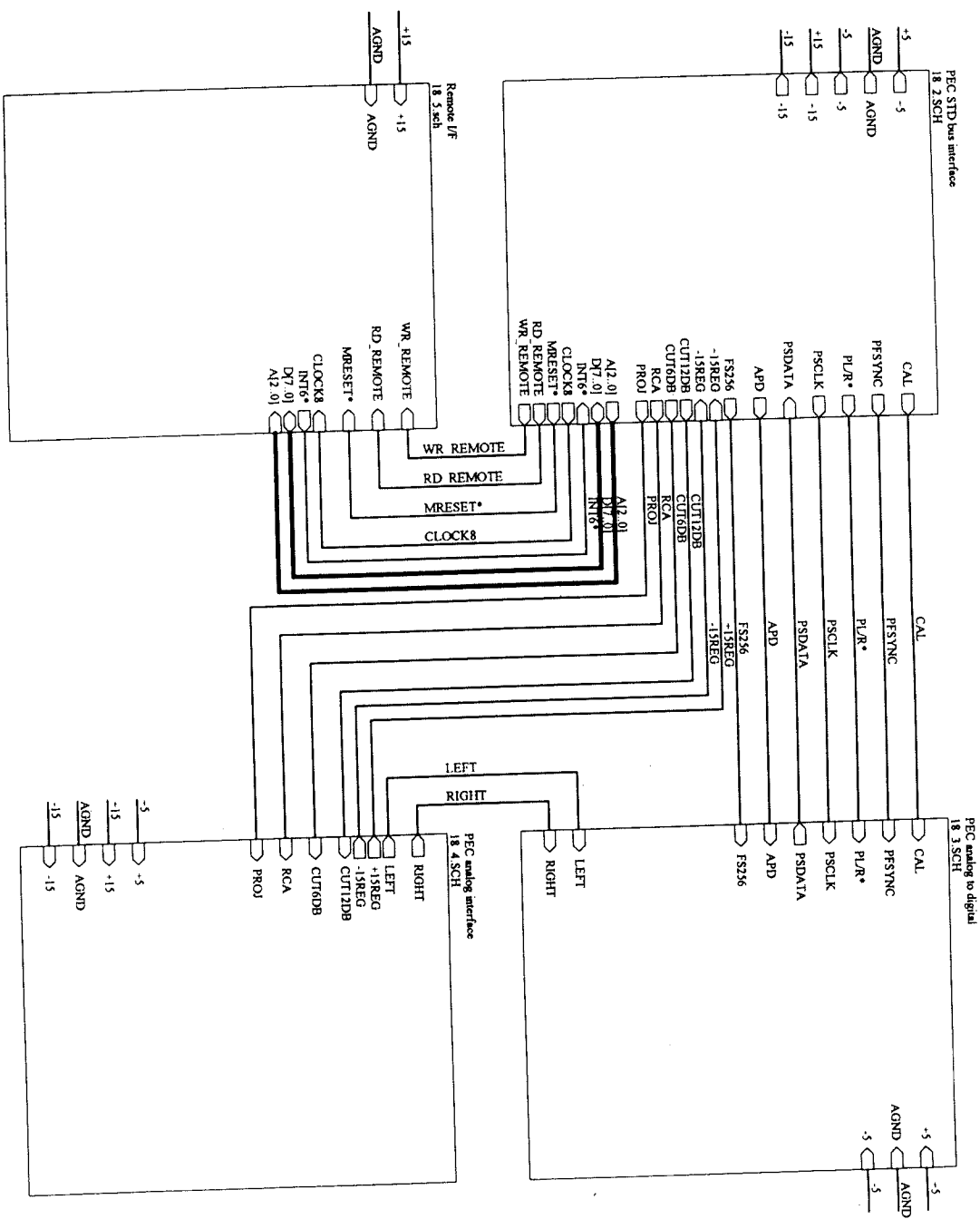


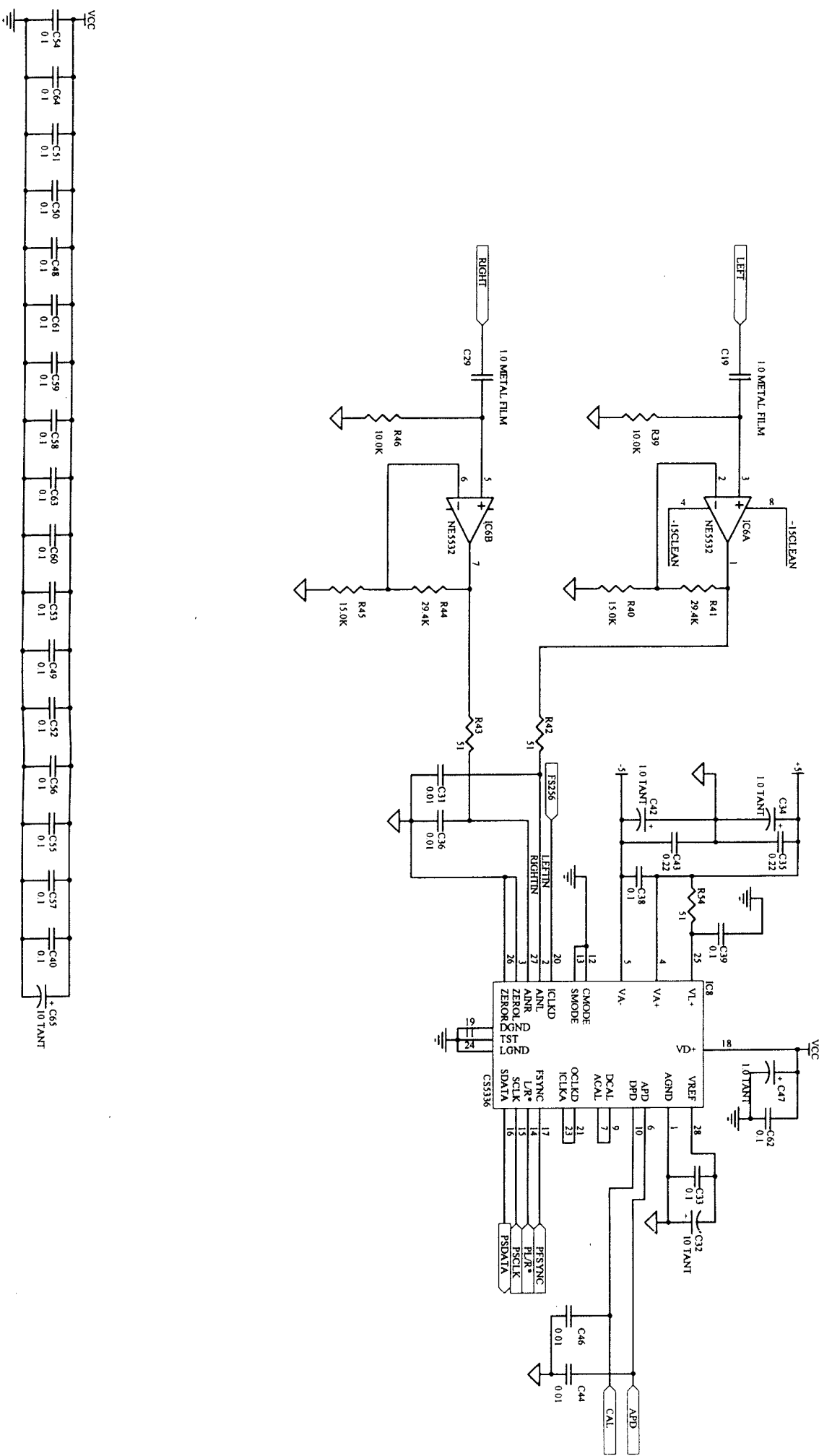
10.5 Front Panel Board (3 of 5)

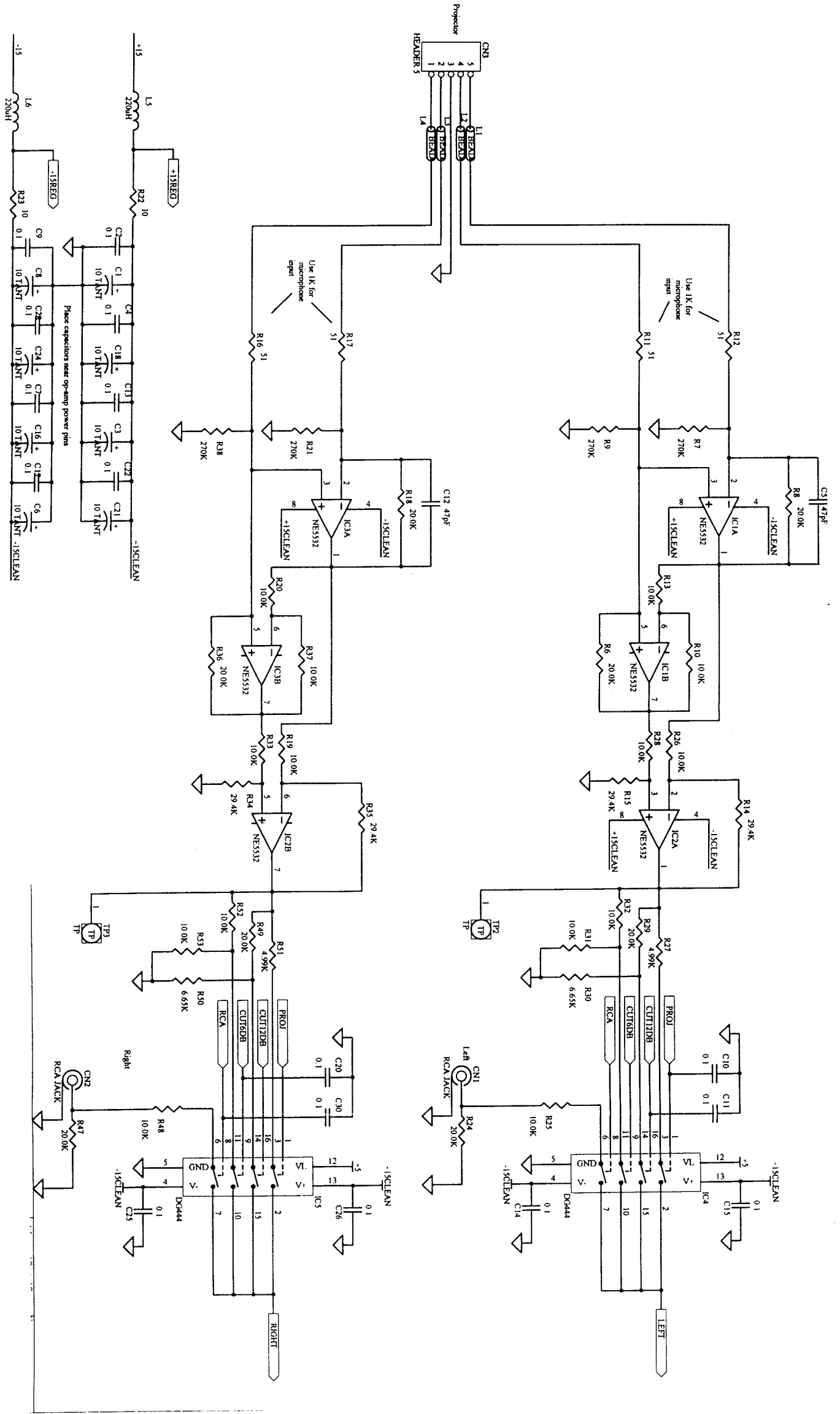


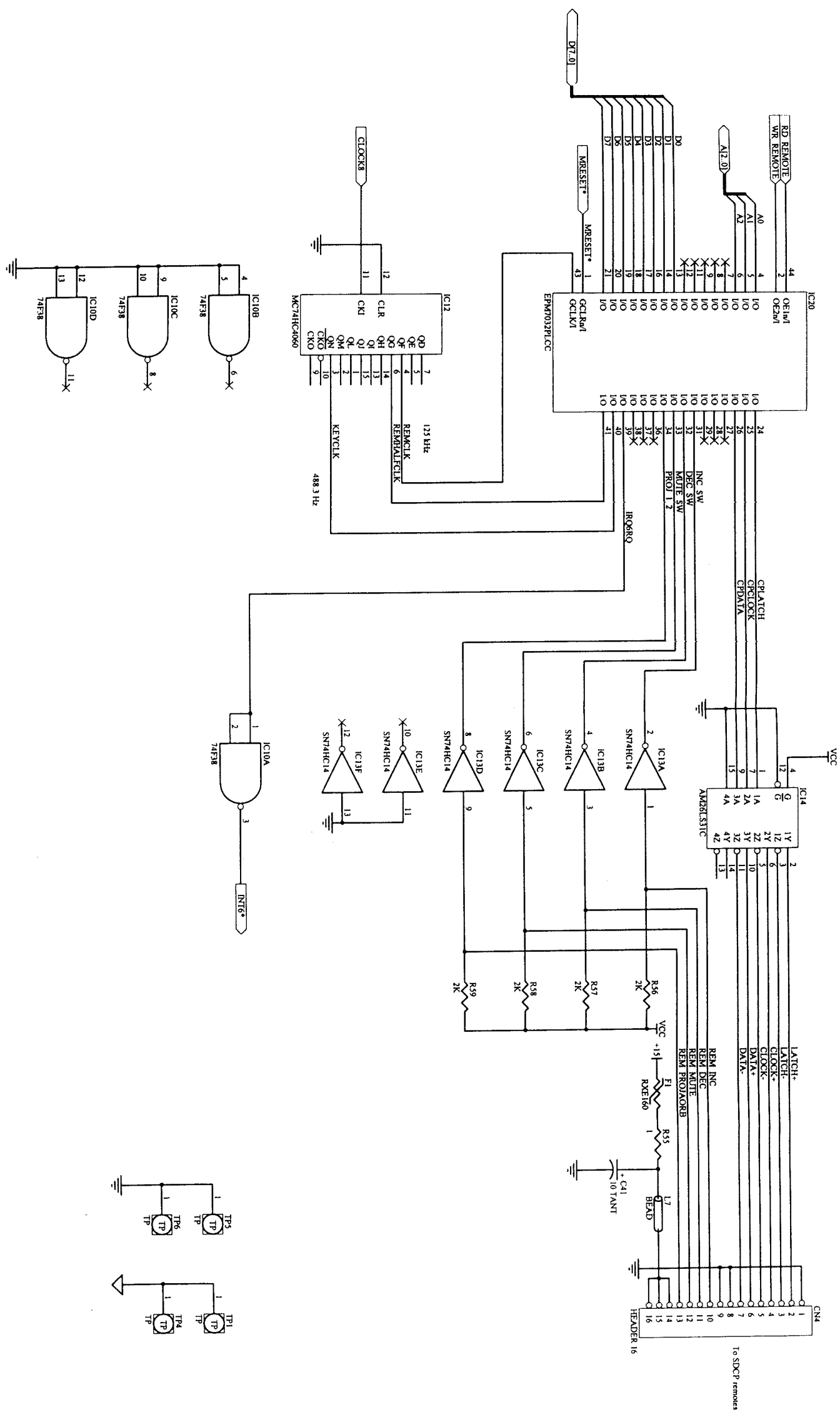




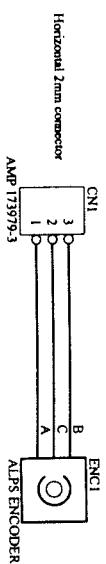
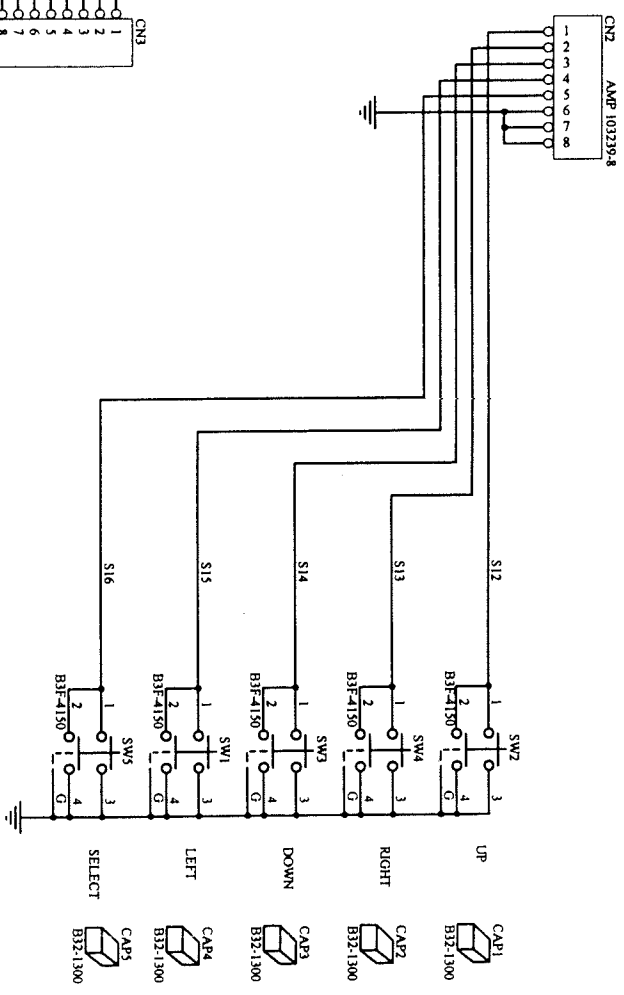
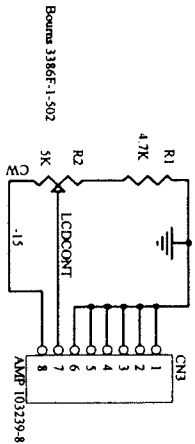
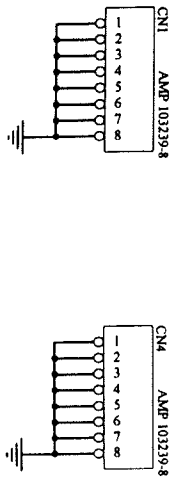
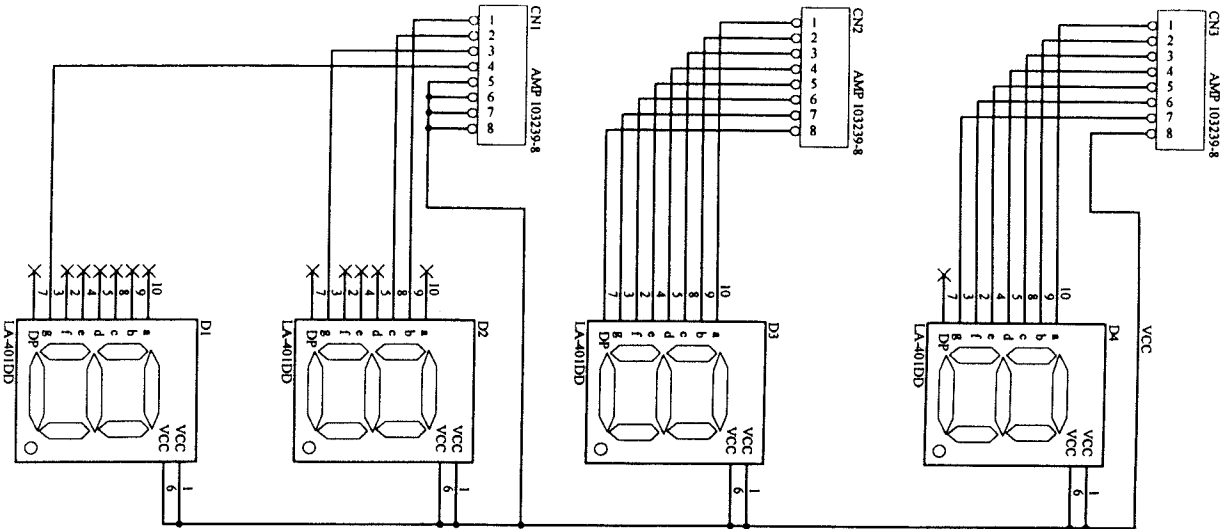








10.5 Front Panel Interconnect Harness (1 of 1)



**Section 11
Semiconductor
Pin Assignments**


**11.1. Semiconductor Pin
Assignments**

Not Available at Time of Printing

SECTION 12 SPARE PARTS

12-1. NOTES ON SPARE PARTS

(1) Safety Related Components Warning

Components marked with  on the schematic diagrams, exploded views and electrical spare parts list are critical to safe operation. Replace these components with Sony parts whose part numbers appear in this manual or in service bulletins and service manual supplements published by Sony.

(2) Standardization of Parts

Repair parts supplied from Sony Parts Center may not be always identical with the parts which actually in use due to "accommodation the improved parts and / or engineering changes" or "standardization of genuine parts."

This manual's exploded views and electrical spare parts list are indicating the part numbers of "the standardized genuine parts at present."

(3) Stock of Parts

Parts marked with "O" SP (Supply Code) column of the spare parts list are not normally required for routine service work. Orders for parts marked with "O" will be processed, but allow for additional delivery time.

(4) Units for Capacitors, Inductors and Resistors

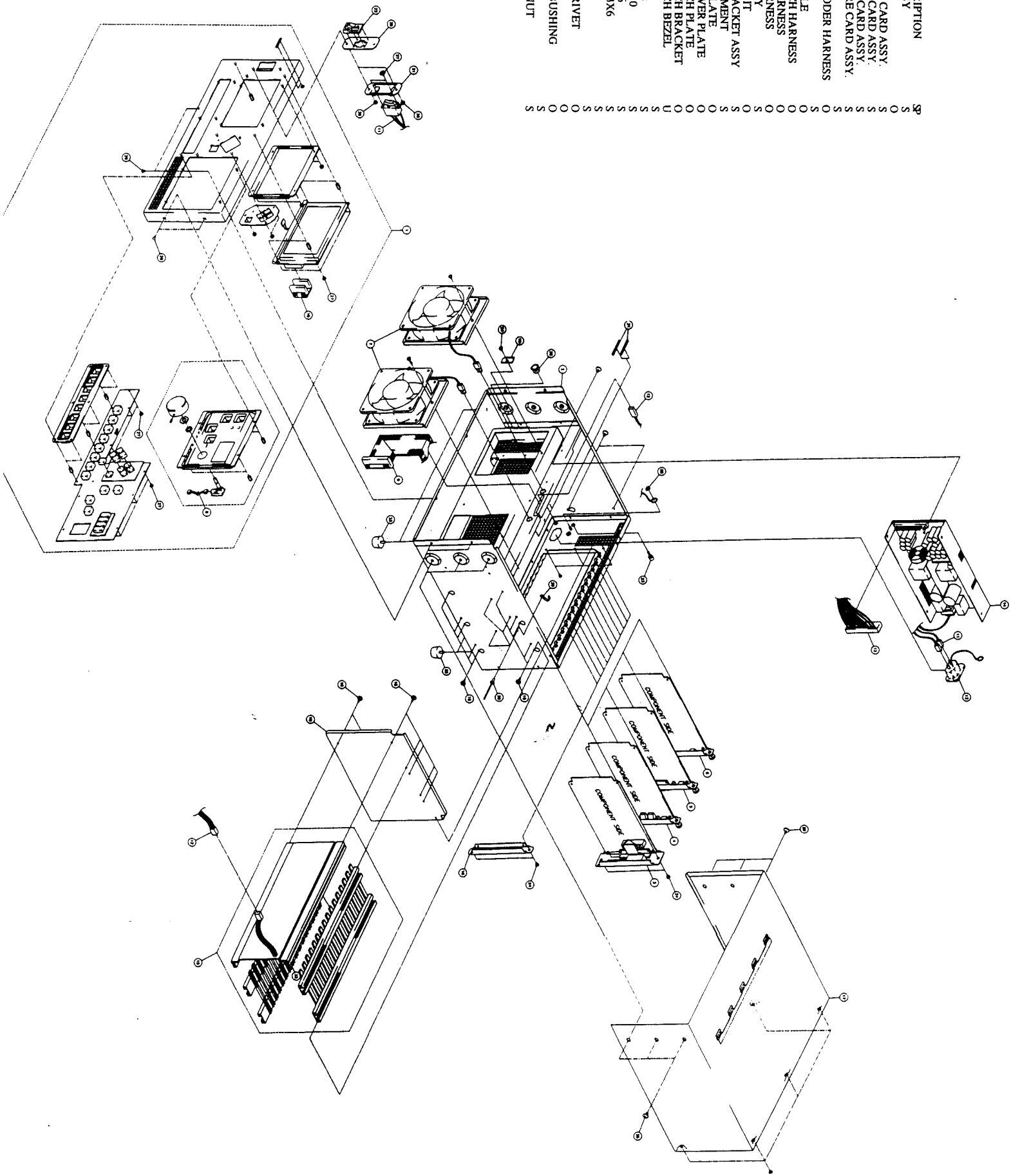
The following units are assumed in schematic diagrams, electrical parts list and exploded views unless otherwise specified.

Capacitors : μF
Inductors : μH
Resistors : Ω

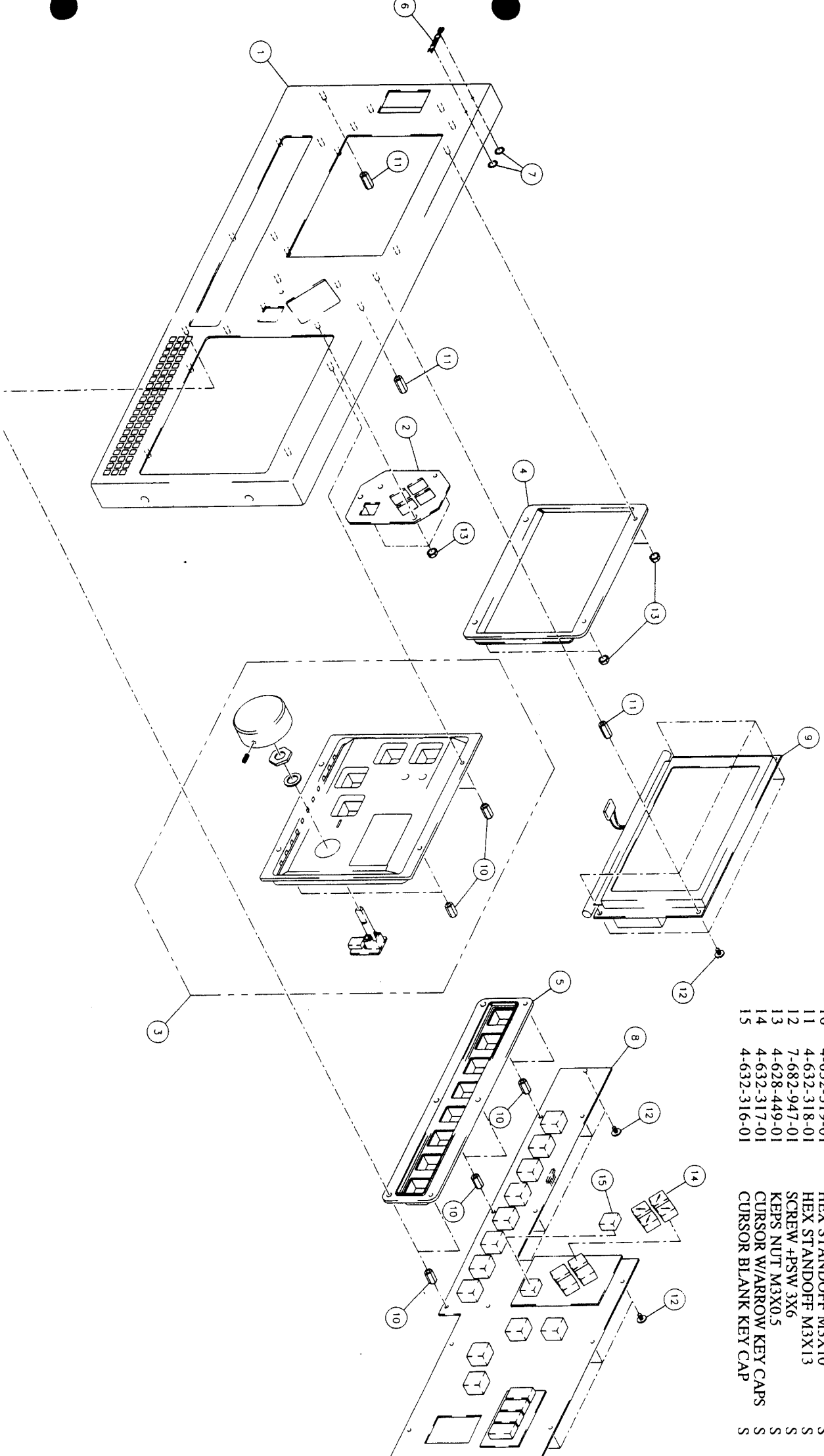
12.2. Exploded Views

Overall Chassis Assembly

NO.	PART NO.	DESCRIPTION	SP
1	A-8031-087-A	OP PANEL ASSY	S
2	X-4621-174-1	CHASSIS ASSY	O
3	A-8080-844-A	CPU FEATURE CARD ASSY.	S
4	A-8080-841-A	DSP FEATURE CARD ASSY.	S
5	A-8080-842-A	PEC FEATURE CARD ASSY.	S
6	A-8080-843-A	AOUT FEATURE CARD ASSY.	S
7	X-4621-177-1	FAN ASSY	S
8	1-955-818-11	ROTARY ENCODER HARNESS	S
9	1-777-023-11	GPU CABLE	O
10	1-777-024-11	DISPLAY CABLE	O
11	1-955-817-11	POWER SWITCH HARNESS	O
12	1-955-816-11	DC POWER HARNESS	O
13	1-955-815-11	AC INLET HARNESS	O
14	0-126-429-00	POWER SUPPLY	O
15	4-632-345-01	CARD CAGE KIT	S
16	A-8031-086-A	I/O BLANK BRACKET ASSY	S
17	X-4621-176-1	COVER WELDMENT	S
18	4-632-342-01	CARD CAGE PLATE	O
19	4-632-315-01	AC CABLE COVER PLATE	O
20	4-632-334-01	POWER SWITCH PLATE	O
21	4-632-335-01	POWER SWITCH BRACKET	O
22	4-631-401-01	POWER SWITCH BEZEL	O
23	3-706-165-01	SCREW	U
24	7-682-561-04	SCREW +B 4X8	S
25	7-682-575-04	SCREW +B 5X10	S
26	7-682-247-09	SCREW +K 3X6	S
27	7-682-947-01	SCREW +PSW 3X6	S
28	4-632-312-01	M4 KEP NUT	S
29	3-703-150-11	CLAMP	S
30	4-631-168-01	DOME HEAD RIVET	O
31	4-632-311-01	GROMMET	O
32	4-632-314-01	OPEN/CLOSE BUSHING	O
33	4-632-313-01	FOOT	O
36	4-632-312-01	M3X0.5 KEPS NUT	S



Control Panel Assembly

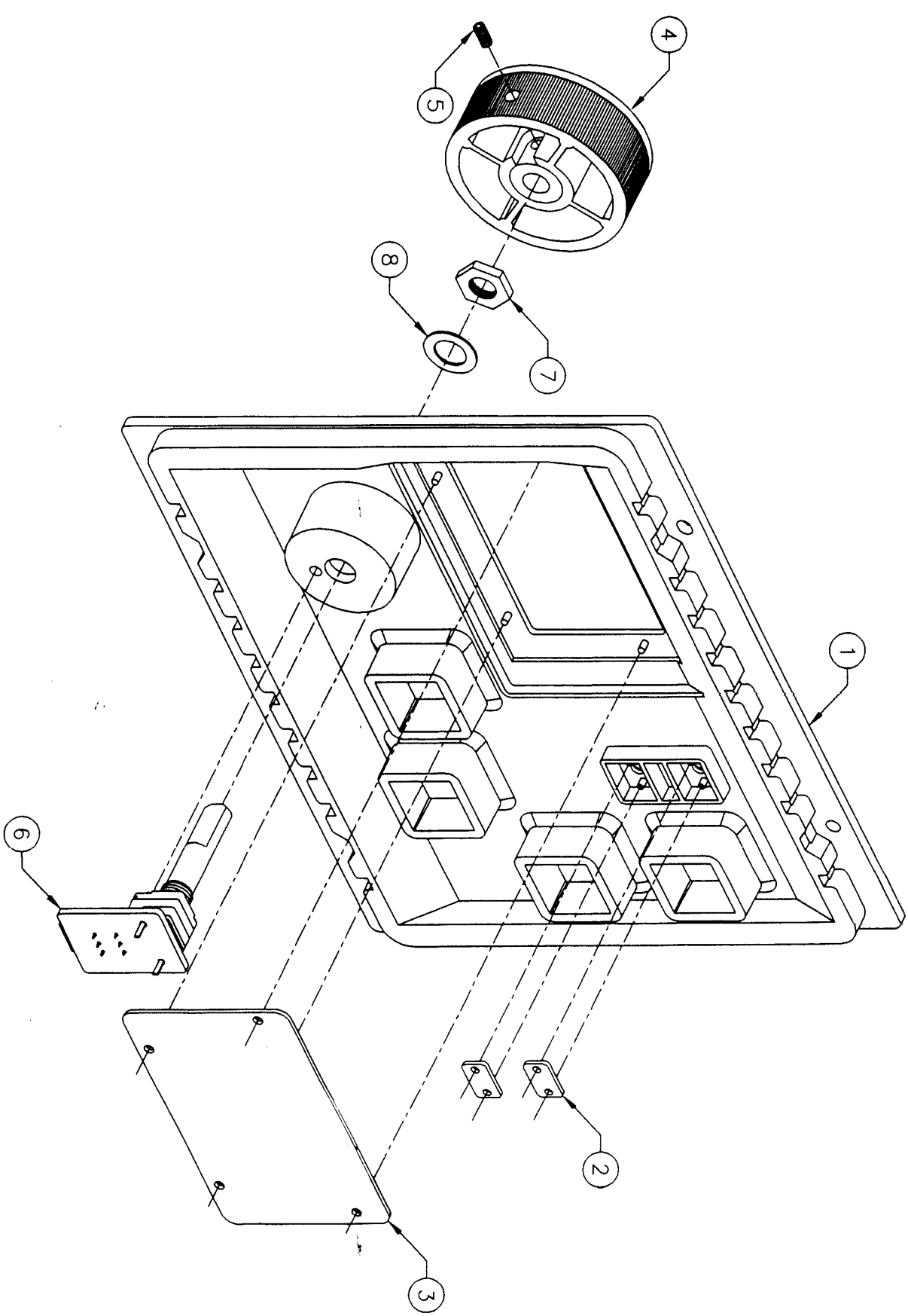


NO	PART NO.	DESCRIPTION	SP
1	4-632-344-01	FRONT PANEL	S
2	4-632-324-01	CURSOR PLATE	O
3	A-8031-084-A	CONTROL PANEL ASSY	O
4	A-0172-035-A	LCD WINDOW ASSY	O
5	4-631-405-01	PRESET BEZEL	O
6	3-718-322-02	SONY NO. 5 EMBLEM	O
7	4-632-320-01	PUSH NUT	O
8	A-8080-845-A	FRONT PANEL PC ASSY	O
9	0-126-418-00	LCD DISPLAY	S
10	4-632-319-01	HEX STANDOFF M3X10	S
11	4-632-318-01	HEX STANDOFF M3X13	S
12	7-682-947-01	SCREW 4PSW 3X6	S
13	4-628-449-01	KEPS NUT M3X0.5	S
14	4-632-317-01	CURSOR W/ARROW KEY CAPS	S
15	4-632-316-01	CURSOR BLANK KEY CAP	S

Front Panel Assembly

NO	PART NO.	DESCRIPTION
1	4-631-402-01	CONTROL PANEL BEZEL
2	4-632-310-01	LED LENS
3	4-631-403-01	MASTER LEVEL LENS
4	3-185-284-02	DIAL KNOB
5	7-683-239-08	H3X5 SCREW
6	A-8080-846-A	ENCODER PCBA
7	1-692-523-11	ROTARY ENCODER NUT
8	1-692-523-11	ROTARY ENCODER FLAT WASHER

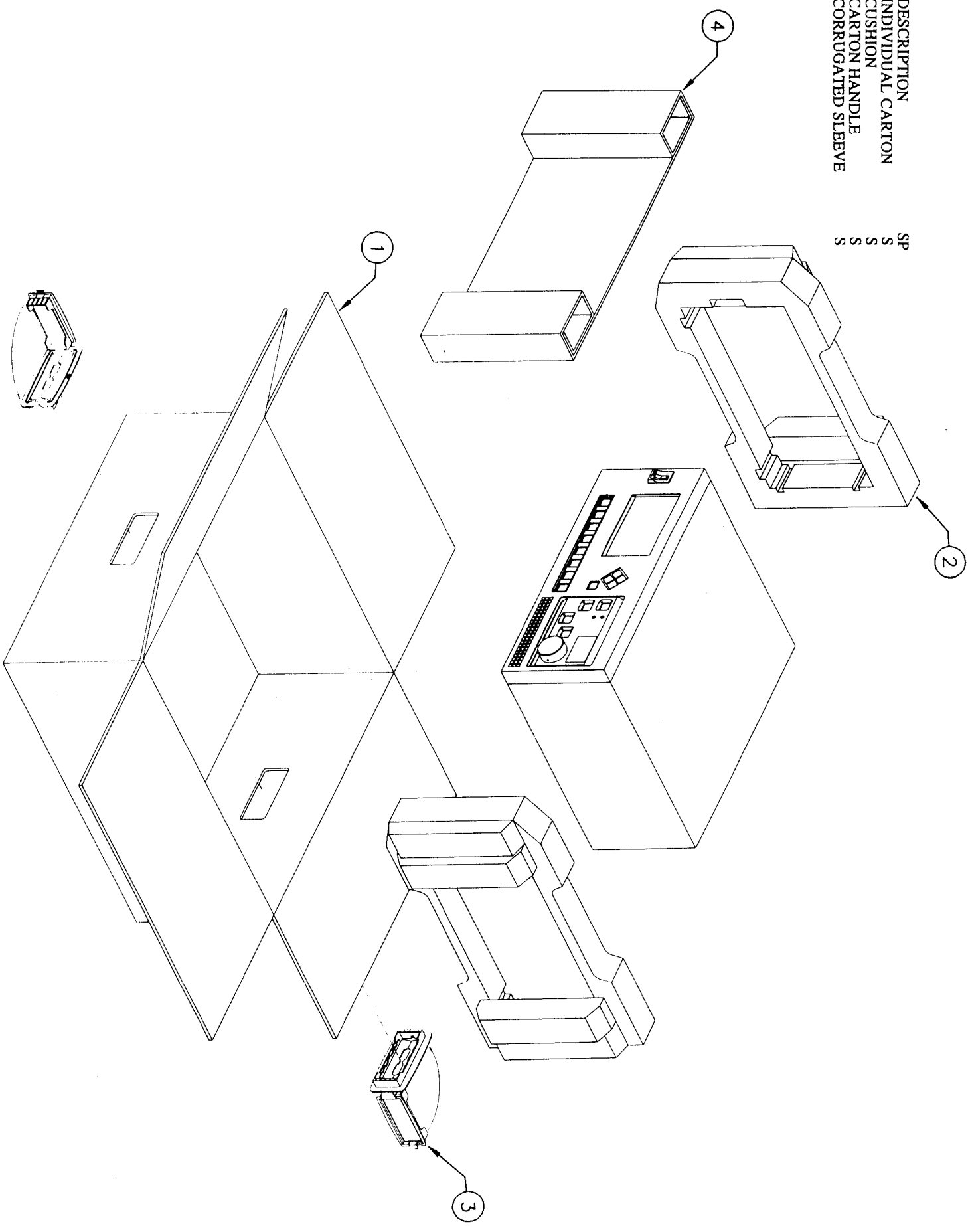
SP
O
O
O
O
S
S
O
U
U



NO	PART NO.
1	4-631-865-01
2	4-632-377-01
3	4-632-343-01
4	4-632-338-01

DESCRIPTION
 INDIVIDUAL CARTON
 CUSHION
 CARTON HANDLE
 CORRUGATED SLEEVE

SP
 S
 S
 S
 S



12-3 COMPONENT PARTS

OVERALL ASSY.

Parts No.	SP	Description
A-8031-086-A	S	I/O BLANK BRACKET ASSY
A-8031-087-A	S	OP PANEL ASSY
A-8080-841-A	S	DSP CARD ASSY (FEATURE)
A-8080-842-A	S	PEC CARD ASSY (FEATURE)
A-8080-843-A	S	A-OUT CARD ASSY (FEATURE)
A-8080-844-A	S	CPU CARD ASSY (FEATURE)
X-4621-174-1	O	CHASSIS ASSY
X-4621-176-1	S	COVER ASSY (WELDMENT)
X-4621-177-1	S	FAN ASSY
0-126-429-00	S	POWER SUPPLY
1-777-023-11	S	CPU CABLE
1-777-024-11	O	DISPLAY CABLE
1-955-815-11	O	AC INLET HARNESS
1-955-816-11	O	DC POWER HARNESS
1-955-817-11	O	POWER SWITCH HARNESS
1-955-818-11	O	ROTARY ENCODER HARNESS
3-703-150-11	S	CLAMP FOR ROTARY ENCODER HARNESS
3-706-165-01	S	SCREWS FOR ROTARY ENCODER HARNESS
3-947-736-01	O	BAR CODE LABEL
4-628-449-01	O	KEPS NUT (M3X0.5)
4-631-168-01	U	DOME HEAD RIVET
4-631-401-01	O	POWER SWITCH BEZEL
4-632-311-01	O	GROMMET
4-632-312-01	S	KEPS NUT
4-632-313-01	S	FOOT
4-632-315-01	O	AC CABLE COVER PLATE
4-632-334-01	O	POWER SWITCH PLATE
4-632-335-01	O	POWER SWITCH BRACKET
4-632-342-01	O	CARD CAGE PLATE
4-632-345-01	O	CARD CAGE KIT
7-682-247-09	S	CARD CAGE KIT SCREW +K 3X6
7-682-561-04	S	CARD CAGE KIT SCREW +B 4X8
7-682-575-04	S	CARD CAGE KIT SCREW +B 5X10
7-682-947-01	S	CARD CAGE KIT SCREW +PSW 3X6

12-3 COMPONENT PARTS

ACCESSORY ASSY.

Parts No.	SP	Description
A-8007-773-A		ACCESSORY DISPLAY
0-172-120-00	O	WARNING LABEL
1-506-510-11	O	25 PIN D SUB (SOCKET) CONNECTOR
1-564-747-11	O	25 PIN D SUB (PLUG) CONNECTOR
1-566-441-11	O	15 PIN D SUB CONNECTOR
1-534-754-15	S	POWER CORD (JAPAN)
1-590-910-11	S	POWER CORD (UK)
1-751-091-11	S	POWER CORD 3 CORE (US)
1-774-954-11	O	5X1 PLUG CONNECTOR
4-382-826-02	S	ADJUSTMENT SCREW DRIVER
4-631-866-01	S	OPERATION MANUAL
4-631-867-01	S	WARRANTY CARD
4-632-321-01	S	CABLE CLAMP 6.4MM
4-632-336-01	S	RACK MOUNT BRACKET
7-682-575-04	S	RACK MOUNT BRACKET SCREW +B 5X10

PACKAGING GROUP

Parts No.	SP	Description
A-8011-440-A	O	PACKAGING GROUP

ACCESSORY & PACKAGING GROUP

Parts No.	SP	Description
A-8011-441-A	S	ACCESSORY & PACKAGING GROUP
A-8007-773-A	S	ACCESSORY ASSY
A-8011-440-A	S	PACKAGING GROUP

12-3 COMPONENT PARTS

CONTROL PANEL ASSY.

Parts No.	SP	Description
A-8031-084-A	S	CONTROL PANEL ASSY
A-8080-846-A	S	ENCODER PCBA
3-185-284-02	S	DIAL KNOB
4-631-402-01	O	CONTROL PANEL BEZEL
4-631-403-01	O	MASTER LEVEL LENS
4-632-310-01	O	LED LENS
7-683-239-08	S	LED LENS SCREW H3X5

LCD WINDOW ASSY.

Parts No.	SP	Description
A-8031-085-A	S	LCD WINDOW ASSY

I/O BLANK BRACKET ASSY.

Parts No.	SP	Description
A-8031-085-A	S	I/O BLANK BRACKET ASSY.

OP PANEL ASSY.

Parts No.	SP	Description
A-8031-087-A	S	OP PANEL ASSY
A-8031-084-A	S	CONTROL PANEL ASSY
A-8031-085-A	S	LCD WINDOW ASSY
A-8080-845-A	S	FRONT PANEL PC ASSY
0-126-418-00	S	LCD DISPLAY
4-631-405-01	O	PRESET BEZEL
4-632-316-01	S	KEY CAP BLANK CURSOR
4-632-317-01	S	KEY CAP CURSOR WITH ARROW
4-632-318-01	S	HEX STANDOFF (M3X13)
4-632-319-01	S	HEX STANDOFF (M3X10)
4-632-320-01	S	PUSH NUT
4-632-324-01	O	CURSOR PLATE
4-632-344-01	S	FRONT PANEL
7-682-947-01	S	FRONT PANEL SCREW +PSW 3X6

12-3 COMPONENT PARTS

DSP CARD ASSY.

Parts No.	SP	Description
A-8080-841-A	S	DSP CARD ASSY (FEATURE)
4-632-309-01	O	EMI GASKET
4-632-239-01	O	DSP I/O BRACKET

PEC CARD ASSY.

Parts No.	SP	Description
A-8080-842-A	S	PEC CARD ASSY (FEATURE)
4-632-328-01	O	PEC I/O BRACKET

A OUT CARD ASSY.

Parts No.	SP	Description
A-8080-843-A	S	A OUT CARD ASSY (FEATURE)
4-628-452-01	S	#4 SPLIT RING LOCK WASHER
4-628-459-01	S	JACK SCREW (4-4OUNC)
4-632-309-01	O	EMI GASKET
4-632-327-01	O	A OUT I/O BRACKET

CPU CARD ASSY.

Parts No.	SP	Description
A-8080-844-A	S	CPU CARD ASSY (FEATURE)
0-126-419-00	O	CPU PCBA
1-777-022-11	O	CPU REMAOTE CABLE ASSY
4-628-452-01	S	#4 SPLIT RING LOCK WASHER
4-628-459-01	S	JACK SCREW (4-4OUNC)
4-632-309-01	O	EMI GASKET
4-632-330-01	O	CPU I/O BRACKET

12-3 COMPONENT PARTS

FRONT PANEL PC ASSY.

Parts No.	SP	Description
A-8080-845	S	FRONT PANEL PC ASSY

ENCODER PCBA

Parts No.	SP	Description
A-8080-846-A	S	ENCODER PCBA
1-692-523-11	S	ROTARY PULSE SWITCH

COVER ASSY. (WELDMENT)

Parts No.	SP	Description
X-4621-176-1	S	COVER ASSY (WELDMENT)

FAN ASSY.

Parts No.	SP	Description
X-4621-177-1	S	FAN ASSY