

Film-Tech

The information contained in this Adobe Acrobat pdf file is provided at your own risk and good judgment.

These manuals are designed to facilitate the exchange of information related to cinema projection and film handling, with no warranties nor obligations from the authors, for qualified field service engineers.

If you are not a qualified technician, please make no adjustments to anything you may read about in these Adobe manual downloads.

www.film-tech.com

PHASE CONTROL - ADJUSTMENT

1. Remove the Plug-in Control Plate from the Platter System by grasping it with both hands and pulling straight up. (NOTE: If you do not have Plug-in Control Plates, use the Control Plate removal instructions from the Operations Manual which came with your Platter System.)

2. Remove the screw and washer from the Phase Control cover. Position the Mask Arm in the center of its vertical slot and remove the cover.

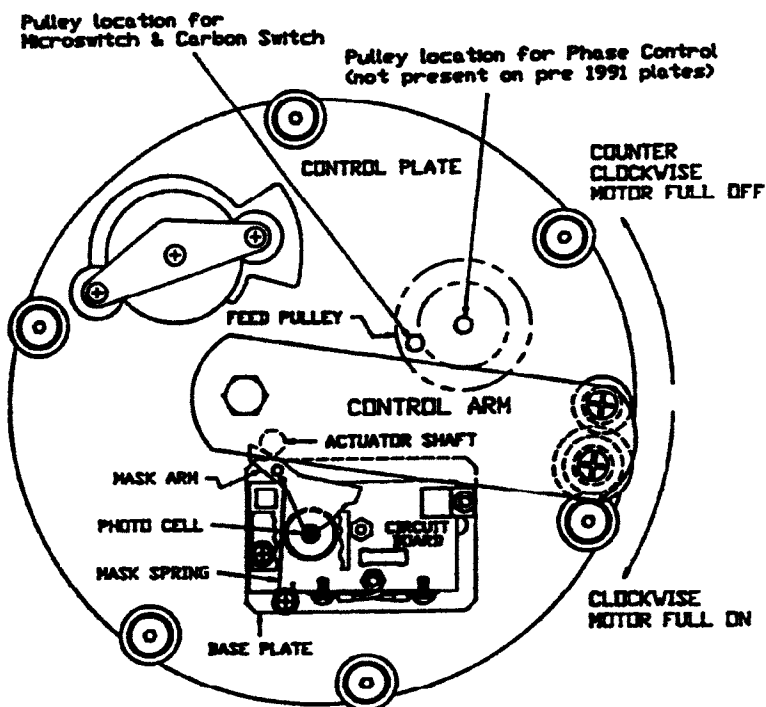
3. Loosen the Phase Control mounting screws and then snug them back down so that the Phase Control is held in place, but its position can be shifted if necessary.

4. Verify that the Mask Spring is positioned correctly, relative to the spring pin in the Mask Arm (see diagram). The Mask Arm can slide up and down on the shaft it pivots on; it is important that it remain seated during adjustment. Move the control arm to its full on position (clockwise).

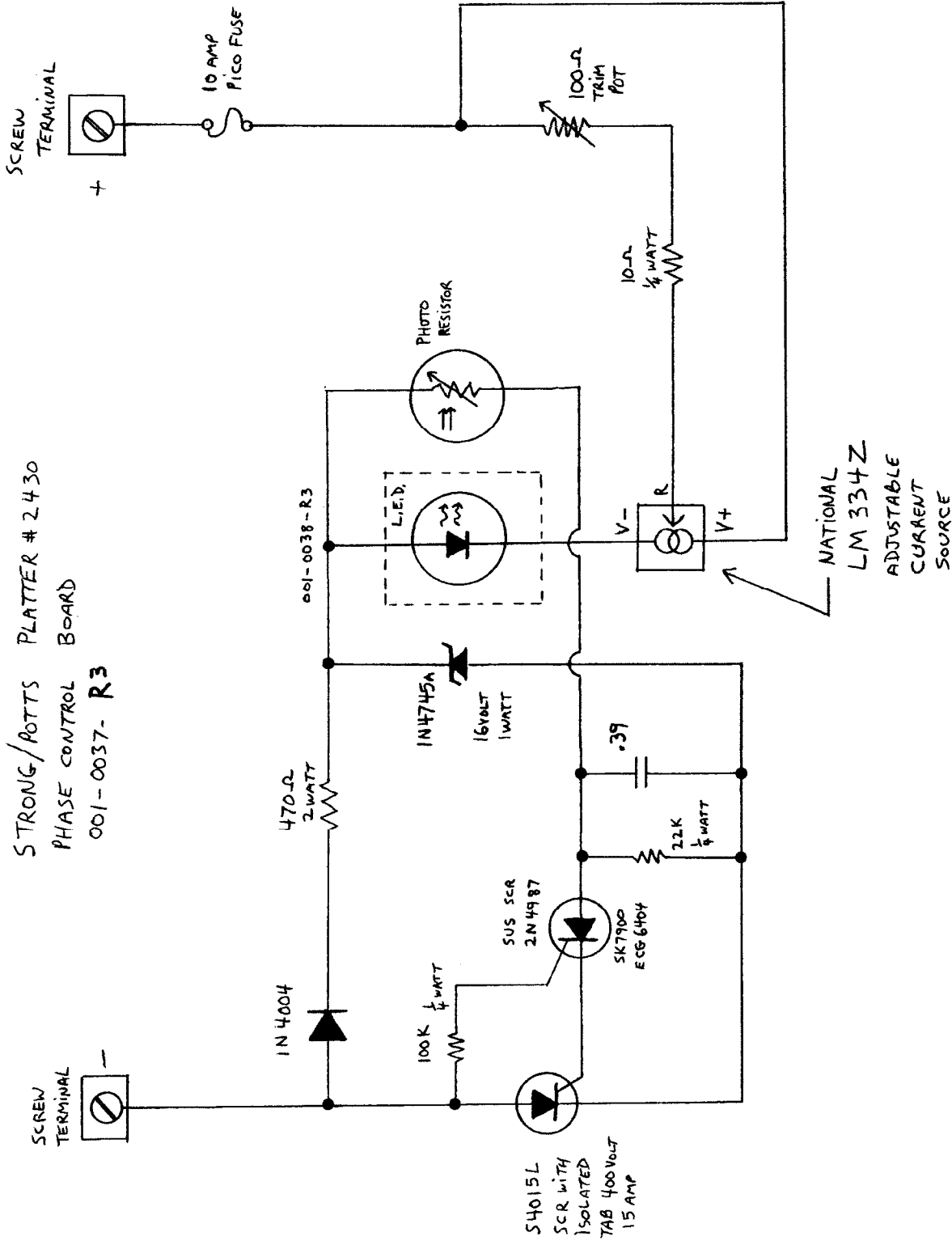
With the control arm in this position, rotate the Phase Control so that the round cutout in the Mask Arm is aligned with the round hole in the Photo Cell (see diagram). Tighten both hold down screws. Recheck the alignment after moving the control arm back and forth.

5. Move the control arm to its full off position (counter clockwise) and reinstall the cover on the Phase Control. Be sure the red and blue wires are aligned with the notch in the cover and that the cover is seated so that it does not interfere with the movement of the Mask Arm. Secure the cover with the screw and washer. Reinstall the Control Plate on the Platter System.

NOTE: The potentiometer inside the Phase Control has been preset at the factory and should not be altered. Only position adjustments should be required to make the Phase Control function properly.



STRONG/POTTS PLATTER # 2430
 PHASE CONTROL BOARD
 001-0037-R3



DRAWN BY
 KEN LAYTON
 4-16-96

PARTS LIST FOR STRONG/POTTS PHASE CONTROL BOARD

Semiconductors:

1N4004 Diode

1N4745A Zener diode, 16 volt 1 watt (1N4750A on version R2 boards)

S4015L SCR with isolated tab (use originals only, the ECG and SK types are too big, cover won't fit)

2N4987 SCR

LM334Z Constant current source

LED

Resistors:

100K 1/4 watt

22K 1/4 watt

10 ohm 1/4 watt (33 ohm on R2 version boards)

470 ohm 2 watt (330 ohm on R2 version boards)

100 ohm trim pot

Photo resistor

Capacitors:

.39 mfd mylar 250 volt

Fuse:

10 amp pico fuse (use care in soldering!)