

FILM-TECH

THE INFORMATION CONTAINED IN THIS ADOBE ACROBAT PDF FILE IS PROVIDED AT YOUR OWN RISK AND GOOD JUDGMENT.

THESE MANUALS ARE DESIGNED TO FACILITATE THE EXCHANGE OF INFORMATION RELATED TO CINEMA PROJECTION AND FILM HANDLING, WITH NO WARRANTIES NOR OBLIGATIONS FROM THE AUTHORS, FOR QUALIFIED FIELD SERVICE ENGINEERS.

IF YOU ARE NOT A QUALIFIED TECHNICIAN, PLEASE MAKE NO ADJUSTMENTS TO ANYTHING YOU MAY READ ABOUT IN THESE ADOBE MANUAL DOWNLOADS.

WWW.FILM-TECH.COM

PARTS CATALOG

AUTOLOAD[®]
FILMOSOUND[®] 16mm PROJECTOR
(AUTOMATIC THREADING)

MODELS

1585C/CH	1590C/CS
1585CH/CHS	1592C/CS
1585ML/MLS	1592CH/CHS

1978 Bell & Howell Company
All Rights reserved



BELL & HOWELL

INTERNATIONAL SERVICE DEPT.

Replacement Parts

The following pages illustrate and list, by part number and description, all replacement parts for the Bell & Howell Company "C" series Automatic Threading Filmosound Projectors, Models 1585, 1590 and 1592. These projectors are physically and mechanically similar in design except that the 1585 models do not include the mechanism cover assembly (item 11, Figure 1) and only the 1592 models are equipped with the "remote" and "still" picture control features.

The suffix letter "S" (1585CS, 1592CS, etc.) simply indicates that the basic projector model is equipped with a front speaker cover assembly (Figure 15) instead of the standard front cover assembly (item 1, Figure 1). The suffix letter "H" (1585CH, 1592CH, etc.) indicates that the basic projector model is designed for 50/60Hz operation rather than for 60Hz operation only. In all other respects, the CS, CH and CHS models are identical to the basic C models.

Replacement parts which are peculiar to specific projector models are identified by code letters in the "Usable on Code" column. These code letters and the models to which they apply are listed in the following table. If the "Usable on Code" column is blank, the listed part is applicable to all projector models.

<u>MODELS</u>	<u>CODE</u>
1585C, 1585CS	A
1585CH, 1585CHS	B
1585ML, 1585MLS	C
1590C, 1590CS	D
1592C, 1592CS	E
1592CH, 1592CHS	F

AVAILABLE ACCESSORIES

Remote Control (1592 Only) P/N 014128
400 Foot Take-Up Reel P/N 014570

FIG. & INDEX NO.	PART NO.	DESCRIPTION	UNITS PER ASSY	USABLE ON CODE		
					1	2
COVERS AND LAMPHOUSE						
1-1	016507	SPEAKER/COVER ASSEMBLY, Front (see NOTE A)	1			
-1	016527	COVER ASSEMBLY, Front (see NOTE A)	1			
-1A	707118	. LABEL, Instruction (adhesive backed)	1			
-1B	765460	. RIVET, Semi-tubular	4			
-1C	45083	. LATCH, Cover release	2			
-1D	49283	. SPRING, Cover latch, front	1			
-1E	49282	. SPRING, Cover latch, rear	1			
-1F	49284	. PLATE, Stiffener	1			
-1G	No Number	. COVER, Front (replace complete cover assembly)	NP			
-2	48058	NAMEPLATE, Front cover (for P/N 016527 only)	1			
-3	49638	SCREW, Hex washer head, 6-32 by 1/2 inch	4			
-4	708629	BRACKET, Line cord retainer	1			
-5	48062	PLATE, Control panel cover	1	ADE		
-5	48191	PLATE, Control panel cover	1	BCF		
-5A	46524	LABEL, UL listing (adhesive backed)	1			
-6	708246	SCREW, Hex washer head, 6-32 by 3/4 inch	4			
-6A	49275	SCREW, Special	3			
-7	48055	COVER, Rear	1			
-8	49638	SCREW, Hex washer head, 6-32 by 1/2 inch	2			
-9	016221	COVER AND HANDLE ASSEMBLY, Top	1	ABDEF		
-9	016420	COVER AND HANDLE ASSEMBLY, Top	1	C		
-9A	707449	. SCREW, Hex washer head, tapping, 8-18	4	ABDEF		
-9B	48052	. HANDLE, Carrying	1			
-9C	48063	. BRACKET, Cover mounting	2			
-9D	47203	. FUSE, 5 amp slo-blo	2	C		
-9E	603292	. FUSEHOLDER	2	C		
-9F	707183	. LABEL, Fuse (adhesive backed)	1	C		
-9G	016534	. COVER ASSEMBLY, Top	1	ABDEF		
-9G	016544	. COVER ASSEMBLY, Top	1	C		
-9H	26126	. . RIVET, Tubular, 0.123 inch diameter	2			
-9J	45087	. . STRIKER, Front plate latch	2			
-9K	31020	. . WASHER, Flat	2			
-10	48080	NAMEPLATE, Handle (adhesive backed)	1	ABC		
-10	48079	NAMEPLATE, Handle (adhesive backed)	1	D		
-10	48064	NAMEPLATE, Handle (adhesive backed)	1	EF		
-11	30807	SCREW, Hex washer head, 6-32 by 1/4 inch	2			
-12	30808	SCREW, Hex washer head, 6-32 by 5/16 inch	1			
-13	016371	LAMPHOUSE ASSEMBLY	1	ABCD		
-13	016356	LAMPHOUSE ASSEMBLY	1	EF		
-13A	31953	. SCREW, Pan head tapping, 4-24 by 3/16 inch	2			
-13B	8180	. WASHER, Lock	2			
-13C	707081	. LATCH, Lamphouse	2			
-13D	766693	. SCREW, Pan head tapping, 4-40	3			
-13E	016815	. BRACKET AND HINGE ASSEMBLY	1	ABCD		
-13E	077145	. BRACKET AND HINGE ASSEMBLY	1	EF		
-13F	44173	. . KNOB, Still/Run	1	EF		
-13G	No Number	. BRACKET AND HINGE (Replace item 1-13E)	1			
-14	707077	DEFLECTOR, Air	1	EF		
-15	707114	LABEL, Switch position (adhesive backed)	1	ABCEF		
-15	707115	LABEL, Switch position (adhesive backed)	1	D		
-16	707229	LABEL, Lamp type (adhesive backed)	1	ABCEF		
-16	707231	LABEL, Lamp type (adhesive backed)	1	D		
-17	015509	COVER ASSEMBLY, Exciter lamp (see Figure 9 for detail parts)	1			
-18	44461	LABEL, Speed change warning (adhesive backed)	1	ADEF		
-18	44490	LABEL, 50/60Hz (adhesive backed)	1	BC		
-19	87129	LABEL, Caution (adhesive backed)	1			

NOTE A: The suffix letter "S" indicates that the basic projector model is equipped with Front Speaker/Cover Assembly P/N 016507 (Figure 15). All models without the "S" suffix use Front Cover Assembly P/N 016527.

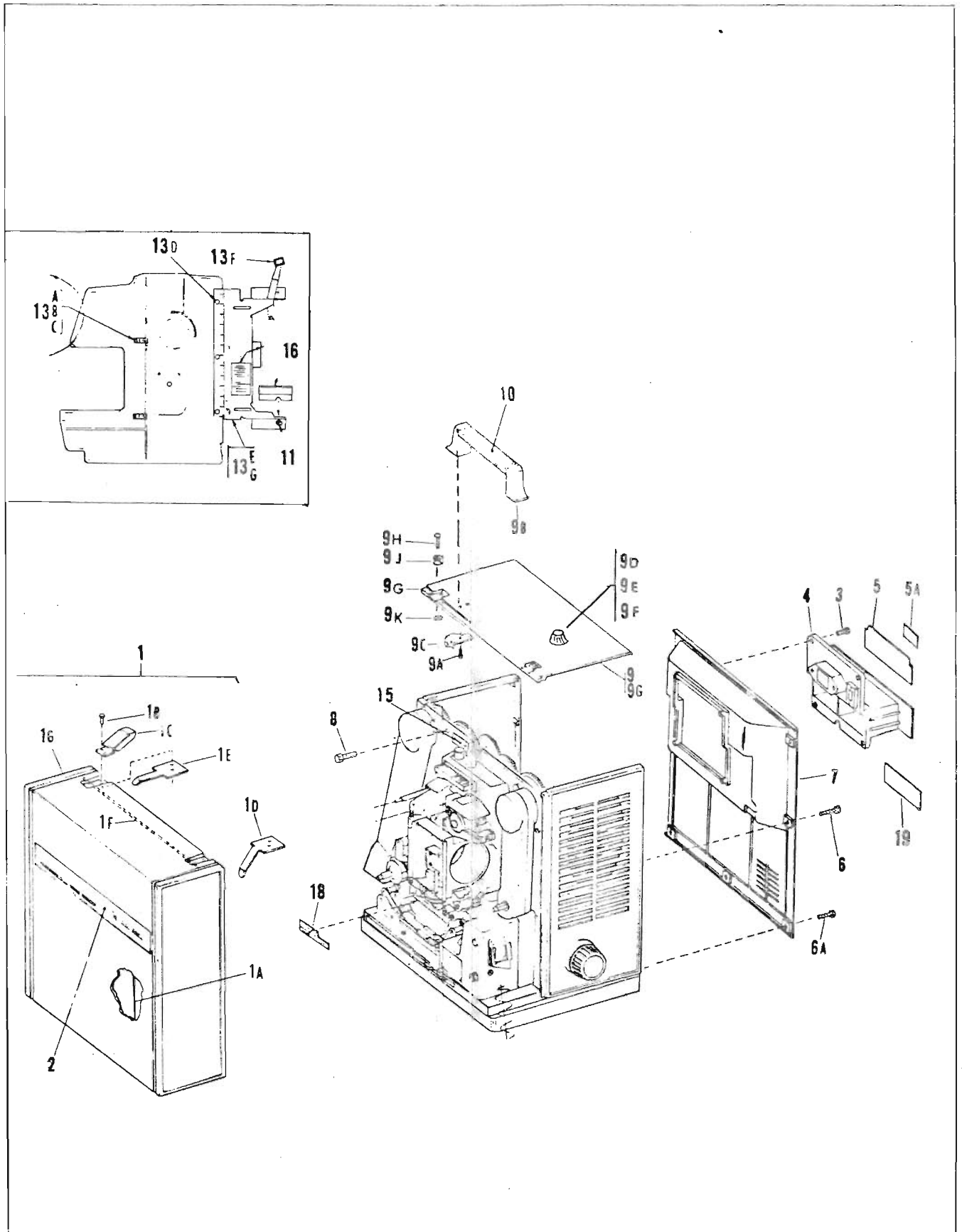


Figure 1. Covers and Lamphouse

FIG. & INDEX NO.	PART NO.	DESCRIPTION							UNITS PER ASSY	USABLE ON CODE
		1	2	3	4	5	6	7		
END CAPS AND LAMP PARTS										
2-1	36769	SETSCREW, Fluted socket cup pt, 8-32 by 1/4 inch							1	
-2	09807	KNOB ASSEMBLY, Tilt							1	
-3	49637	SCREW, Hex washer head, 6-32 by 3/4 inch							4	
-3A	47974	SPACER, Sleeve							4	
-4	49637	SCREW, Hex washer head, 6-32 by 3/4 inch							4	
-5	709218	NUT, Speed							12	
-6	016610	END CAP ASSEMBLY, Front							1	
-6A	45102	. NUT, Tinnermann							4	
-6B	707747	. SPEAKER, 8 ohm							1	
-6C	48053	. END CAP, Front							1	
-7	016619	END CAP ASSEMBLY, Rear							1	ABCD
-7	016609	END CAP ASSEMBLY, Rear							1	EF
-7A	30809	. SCREW, Hex washer head, 6-32 by 3/8 inch							4	ABCD
-7B	44226	. CLAMP, Capacitor							1	ABCD
-7C	45692	. CAPACITOR, Starting							1	ABCD
-7D	44298	. RIVET, Semi-tubular, 0.146 inch diameter							2	
-7E	82946	. WASHER, Flat							2	
-7F	44587	. RECEPTACLE							1	
-7G	48066	. COVER, Receptacle opening (adhesive backed)							1	ABCD
-7G	48065	. NAMEPLATE, Receptacle (adhesive backed)							1	EF
-7H	49992	. END CAP, Rear							1	
-8	19010	NUT, Hex locking							1	
-9	43878	JACK, Auxiliary speaker (less wires)							1	
-10	25368	WASHER, Insulating							1	
-11	707716	KNOB, Main switch							1	
-11A	709040	LEVER, Still/Run							1	
-12	47431	LAMP, Projection (Type EKS or EMM)							1	ABCEF
-12	44223	LAMP, Projection (Type BAB)							1	D
-13	30808	SCREW, Hex washer head, 6-32 by 5/16 inch							2	
-14	707075	SHIELD, Lamp							1	
-15	014575	LAMPHOLDER ASSEMBLY							1	ABCEF
-15	016651	LAMPHOLDER ASSEMBLY							1	D
-16	707116	LABEL, Still/Run (adhesive backed)							1	EF

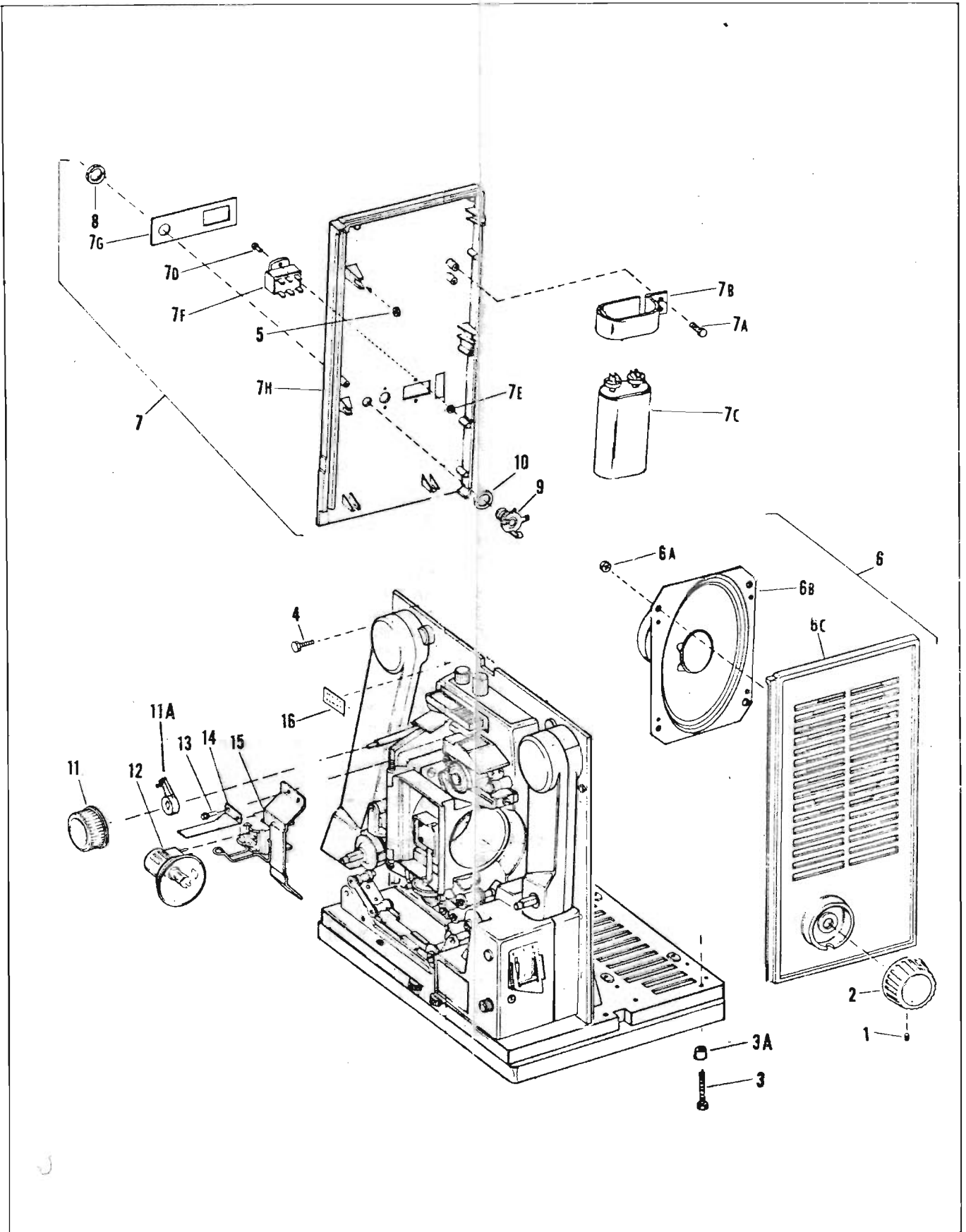


Figure 2. End Caps and Lens Parts

FIG. & INDEX NO.	PART NO.	DESCRIPTION	UNITS							USABLE ON CODE	
			1	2	3	4	5	6	7		PER ASSY
TRANSFORMERS, MOTOR AND BLOWER (CONT'D)											
3-31	016607 or	MOTOR AND LUG ASSEMBLY, 60Hz								1	ADE
-31	016495	MOTOR AND LUG ASSEMBLY, 60Hz								1	ADE
-31	016607	MOTOR AND LUG ASSEMBLY, 50/60Hz								1	
-32	308638	FUSE, Slo-blo, 3/4 amp								1	
-33	30809	SCREW, Hex washer head, 6-32 by 3/8 inch								2	EF
-34	014573	SWITCH AND BRACKET ASSEMBLY, Animation								1	EF
-34A	44536	. RIVET, Tubular								2	EF
-34B	88672	. SWITCH, Animation								1	EF
-34C	No Number	. BRACKET, Switch (replace complete switch assembly) . .								NP	EF
-35	015664	SWITCH AND BRACKET ASSEMBLY, Rotary								1	EF
-35A	44467	. NUT, Hex locking								1	EF
-35B	600736	. LOCKWASHER, Internal tooth								1	EF
-35C	48625	. SWITCH, Rotary								1	EF
-35D	No Number	. BRACKET ASSEMBLY								NP	EF
-36	44467	NUT, Hex locking								1	ABCD
-37	600736	LOCKWASHER, Internal tooth								1	ABCD
-39	49945	SWITCH, Rotary								1	AB
-39	015051	SWITCH ASSEMBLY, Rotary								1	C
-38	45695	SWITCH, Rotary								1	D
-40	42392	SCREW, Slotted pan head, 6-32 by 1/4 inch								1	ABD
-41	44586	FUSEHOLDER								1	ABD
-42	36763	SETSCREW, Flat socket cup pt, 6-32 by 1/8 inch								2	EF
-43	36533	COLLAR, Solenoid rod								2	EF
-44	45575	SCREW, Binding head, 6-32 by 7/16 inch								3	EF
-45	33285	WASHER, Spacer								3	EF
-46	31489	BUSHING, Rubber								3	EF
-47	077144	SOLENOID ASSEMBLY, Complete								1	EF
-47A	700103	SCREW, Binding head, 10-32 by 1/4 inch								2	EF
-47B	44328	. PLATE, Solenoid mounting								1	EF

NOTE A: If motor pulley (item -27) must be replaced, be sure to replace with a pulley of identical color (plain, black or red).

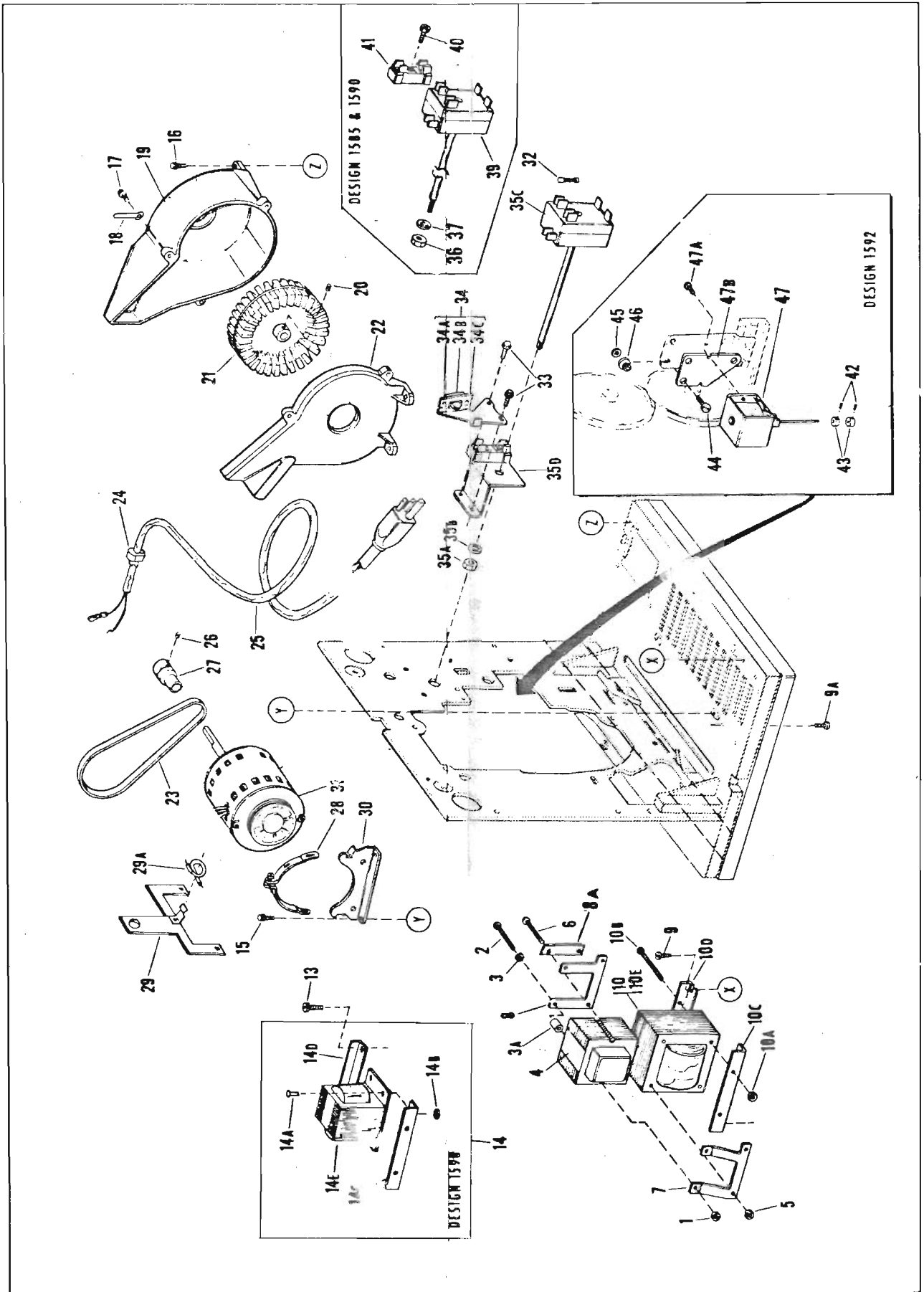


Figure 3. Transformers, Motor and Blower

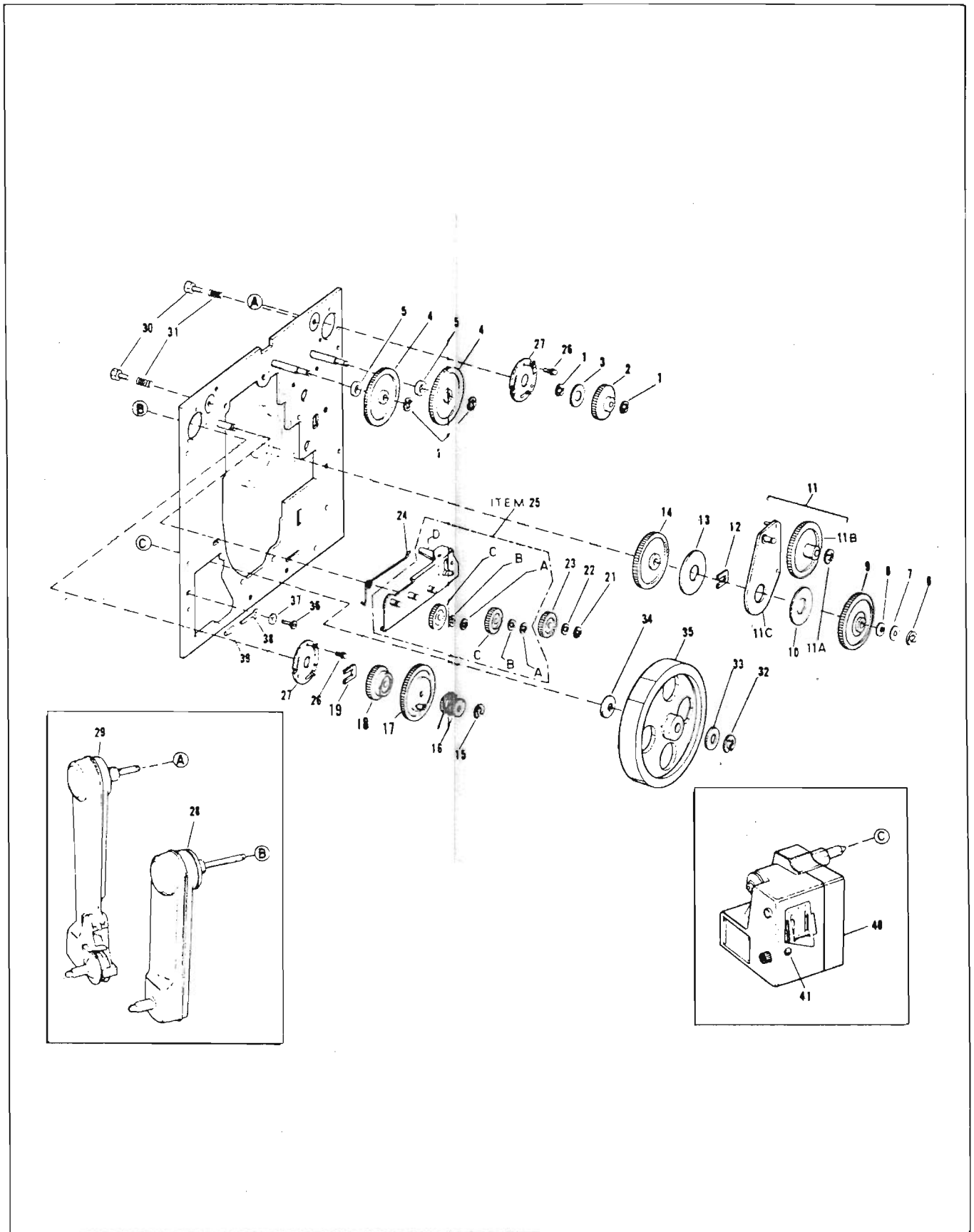


Figure 4. Gears, Reel Arms and Soundhead

FIG. & INDEX NO.	PART NO.	DESCRIPTION							UNITS PER ASSY	USABLE ON CODE
		1	2	3	4	5	6	7		
RUN-STILL LINKAGE AND MECHANISM ASSEMBLY										
5-1	36763	SETSCREW, Fluted socket cup pt, 6-32 by 1/8 inch							2	EF
-2	36533	COLLAR							2	EF
-3	48176	SPRING							1	EF
-4	44516	ROD, Still-Run							1	EF
-5	36763	SETSCREW, Fluted socket cup pt, 6-32 by 1/8 inch							1	EF
-6	36533	COLLAR							1	EF
-7	44395	SPRING							1	EF
-8	44515	ROD, Fire shutter							1	EF
-9	709040	LEVER, Still Run (see item 2-11A)							1	REF
-12	44424	SCREW, Shoulder							2	EF
-13	014539	LINK ASSEMBLY, Sliding							1	EF
-14	44427	SPACER							2	EF
-15	44429	SCREW, Pivot							1	EF
-16	765449	RING, Retaining, external, 0.188 inch ID							1	EF
-17	700710	WASHER, Flat							1	EF
-18	014547	LINK ASSEMBLY, Pivoting							1	EF
-19	44430	SPACER							1	EF
-20	44514	SPRING, Torsion							1	EF
-21	700710	WASHER, Flat							1	EF
-22	31245	RING, Retaining, external, 0.187 inch ID							2	
-23	44526	SPRING, Torsion							1	
-24	44294	STUD, Shoulder							2	
-25	014579	BRACKET ASSEMBLY, Belt shifter							1	
-26	47408	SPACER							2	
-27	44297	SCREW, Special							4	
-28	44348	BRACKET, Idler gear adjustment							1	
-29	No Number	MECHANISM ASSEMBLY, Complete (see Figures 10 - 13 for detail parts)							NP	

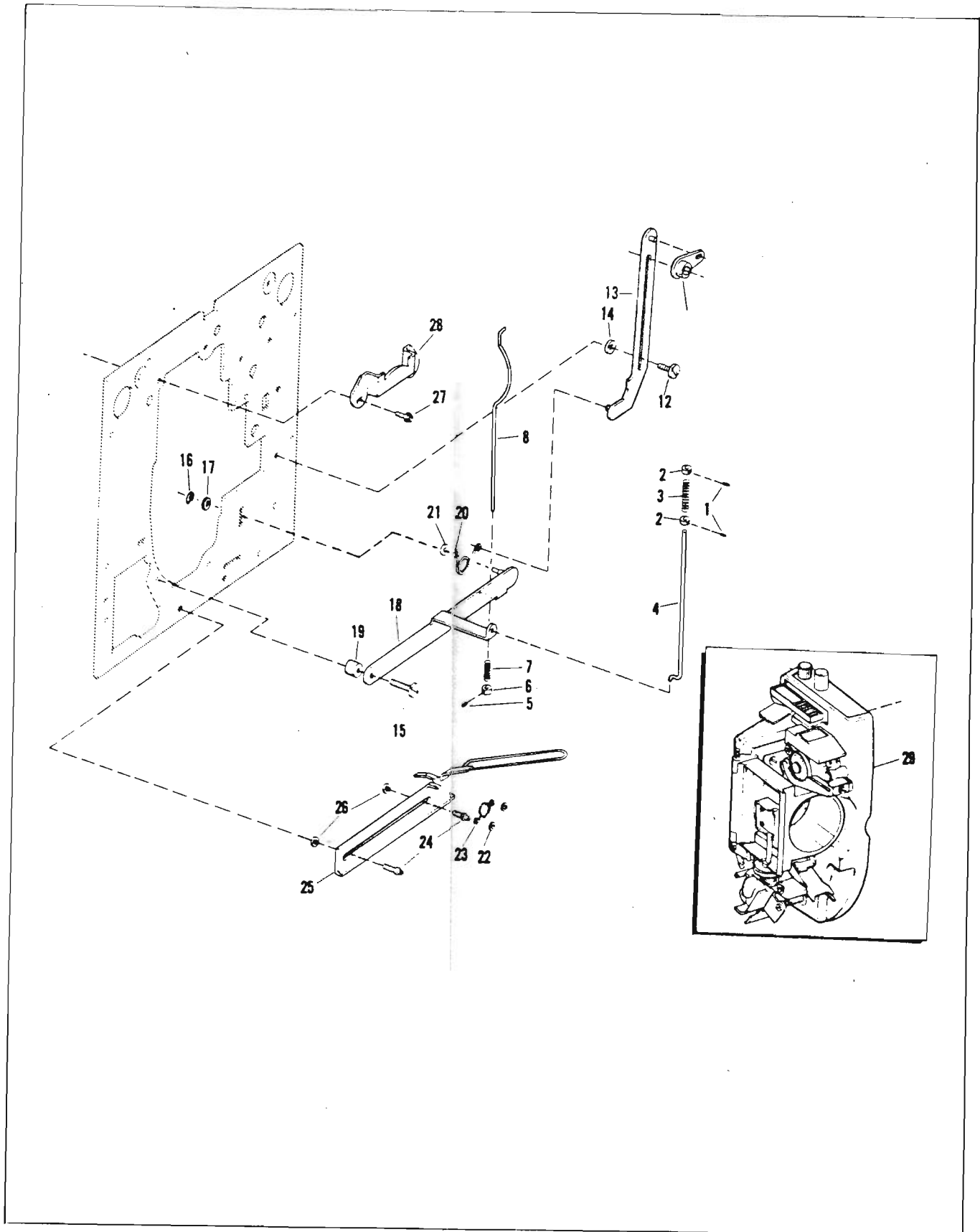


Figure 5. Run-Still Linkage and Mechanism Assembly

FIG. & INDEX NO.	PART NO.	DESCRIPTION	UNITS PER ASSY	USABLE ON CODE		
					1	2
MAINPLATE AND BASE COMPONENTS						
6-1	708237	PLUG, Hole	1			
-2	707276	LABEL, Model No.	1			
-3	708200	LABEL, Threading diagram (adhesive backed)	1			
-4	49986	SCREW, Lever stop	1	EF		
-5	709215	STOP AND PIN, Lever	1	EF		
-7	44440	SHAFT, Adapter	1			
-8	44435	ROLLER, Film guide	1			
-9	44364	SCREW, Pan head, 6-32	1			
-10	014596	FILM GUIDE ASSEMBLY, Sliding	1			
-10A	765449	. RING, Retaining, external, 0.188 inch	2			
-10B	44339	. ADAPTER, Film guide	1			
-10C	44437	. ROLLER, Film guide	2			
-10D	014595	. BRACKET ASSEMBLY, Film guide	1			
-11	48067	NAMEPLATE, "Tone Volume" (adhesive backed).	1			
-12	No Number	NAMEPLATE, "Model/Serial" (adhesive backed).	NP			
-13	46524	LABEL, U.L. (adhesive backed)	1			
-14	87129	LABEL, Caution (adhesive backed)	1			
-15	766395	SCREW, Hex washer head, 6-32 by 5/16 inch	5			
-16	48069	COVER, Amplifier assembly	1			
-17	30808	SCREW, Hex washer head, 6-32 by 5/16 inch	2			
-18	016590	EDGE CONNECTOR ASSEMBLY	1			
-19	30811	SCREW, Hex washer head, 6-32 by 5/8 inch	2			
-20	016530	AMPLIFIER ASSEMBLY	1			
-21	47974	SPACER, Sleeve	2			
-22	766395	SCREW, Hex washer head, 6-32 by 5/16 inch	2			
-23	48078	COVER, Volume, Tone control	1			
-24	766395	SCREW, Hex washer head, 6-32 by 5/16 inch	4			
-25	016613	VOLUME AND TONE CONTROL ASSEMBLY	1			
-25A	48074	. KNOB, Control	2			
-25B	48075	. TRIMPLATE, Volume knob (adhesive backed)	1			
-25C	48076	. TRIMPLATE, Tone knob (adhesive backed)	1			
-25D	48077	. BRACKET, Control	1			
-25E	48088	. CONTROL, Volume, 50K	1			
-25F	48089	. CONTROL, Tone, 250K	1			
-26	34889	SCREW, Binding head, 1/4-28 by 3/8 inch	1			
-27	8179	LOCKWASHER, Spring, 1/4 inch	1			
-28	34766	BAR, Tilt	1			
-29	31561	FOOT, Rubber (cement in place).	1			
-30	30918	SCREW, Hex washer head, 8-32 by 5/8 inch	4			
-31	44532	FOOT, Rubber	4			
-32	44462	WASHER, Flat	4			
-33	300797	SCREW, Lock, speed change	1			
-34	30810	SCREW, Hex washer head, 6-32 by 1/2 inch	4			
-35	015512	MAINPLATE ASSEMBLY	1			
-36	015503	BASE ASSEMBLY, Complete	1			
-37	30809	. SCREW, Hex washer head, 6-32 by 3/8 inch	1			
-38	48070	. ADAPTER, Film gear rack	1			
-39	48071	. GEAR RACK	1			
-40	21736	. RING, Retaining, 0.207 inch ID	1			
-41	48073	. GEARSHAFT, Tilt	1			
-42	34822	. WASHER, Spring tension	1			
-43	44533	. PIN, Spring	1			
-44	48072	. WORM GEAR, Tilt	1			
-45	708214	. BASE, Projector	1			

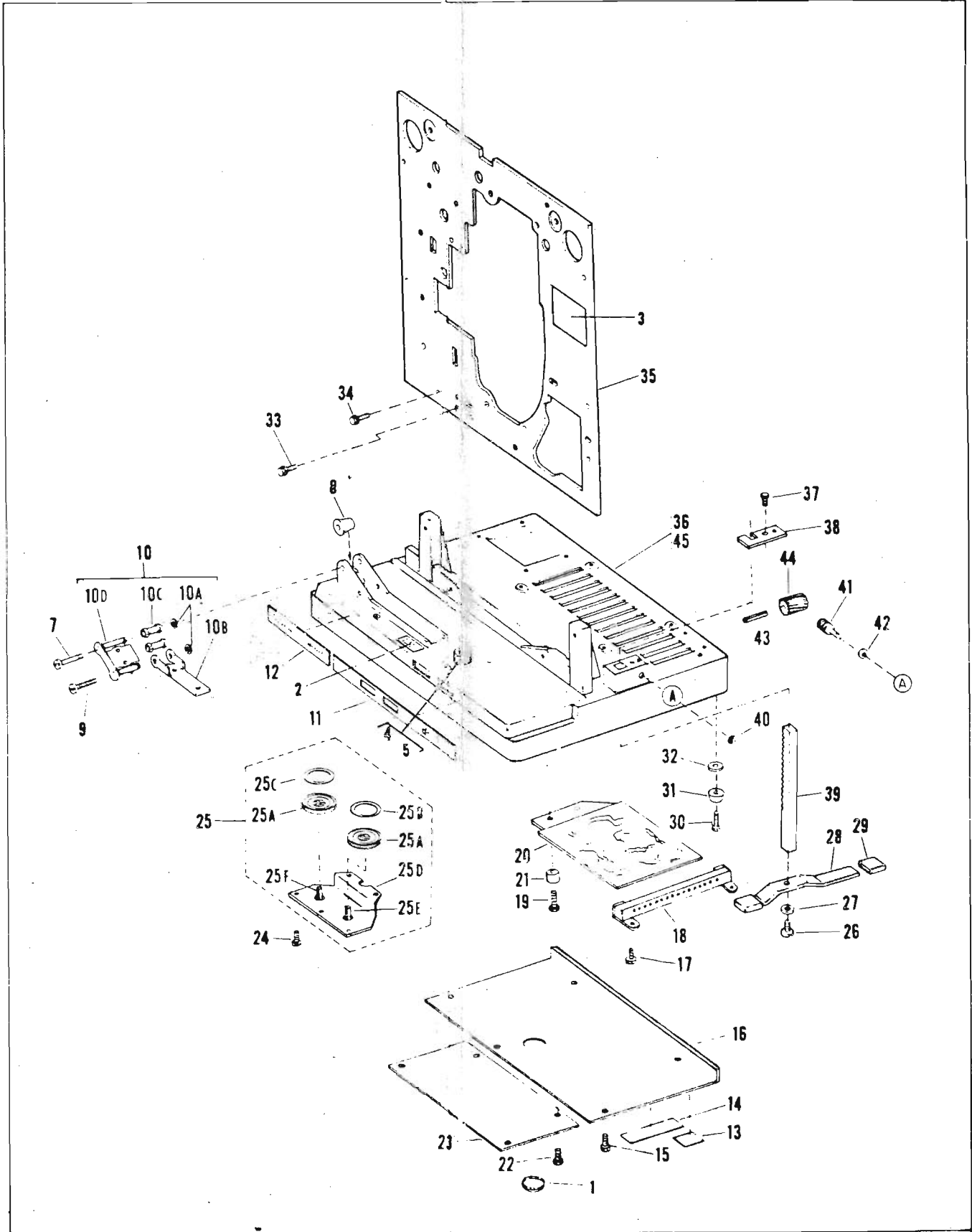


Figure 6. Mainplate and Base Components

FIG. & INDEX NO.	PART NO.	1	2	3	4	5	6	7	DESCRIPTION	UNITS PER ASSY	USABLE ON CODE
FRONT REEL ARM ASSEMBLY											
7-	014948								REEL ARM ASSEMBLY, Front	REF	
-1	30879								SCREW, Hex washer head, special	2	
-2	49696								COVER, Front reel arm	1	
-3	34859								WASHER, Shim	AR	
-4	31247								SCREW, Special	1	
-5	No Number								SPINDLE ASSEMBLY, Feed	NP	
-5A	36769								SETSCREW, Fluted socket cup pt, 8-32 by 1/4 inch	2	
-5B	708498								GEAR, Face, lower	1	
-5C	31359								WASHER, Flat	1	
-5D	016952								SPINDLE ASSEMBLY, Feed	1	
-7	31038								RING, Retaining, external, 0.156 inch ID	1	
-8	36764								SETSCREW, Fluted socket cup pt, 6-32 by 3/16 inch	1	
-8A	36765								SETSCREW, Fluted socket cup pt, 6-32 by 1/8 inch	1	
-9	45577								GEAR, Face, upper	1	
-9A	45578								SLEEVE, Plastic	1	
-10	45579								SPRING, Torsion	1	
-11	765777								RING, Retaining, external, 0.250 inch ID	1	
-12	31017								WASHER, Thrust	1	
-13	700672								WASHER, Spacer	1	
-14	707111								SHAFT, Front reel arm	1	
-15	31245								RING, Retaining, grip type, 0.187 inch ID	1	
-16	33385								GEAR, Spur, upper	1	
-17	31241								CLIP, Gear retaining	2	
-18	31243								WASHER, Flat	1	
-19	31239								GEAR, Spur, lower	1	
-20	44407								SHAFT, Gear	1	
-21	31236								BEARING, Nylon	2	
-22	014616								ARM AND BEARING ASSEMBLY, Front reel	1	

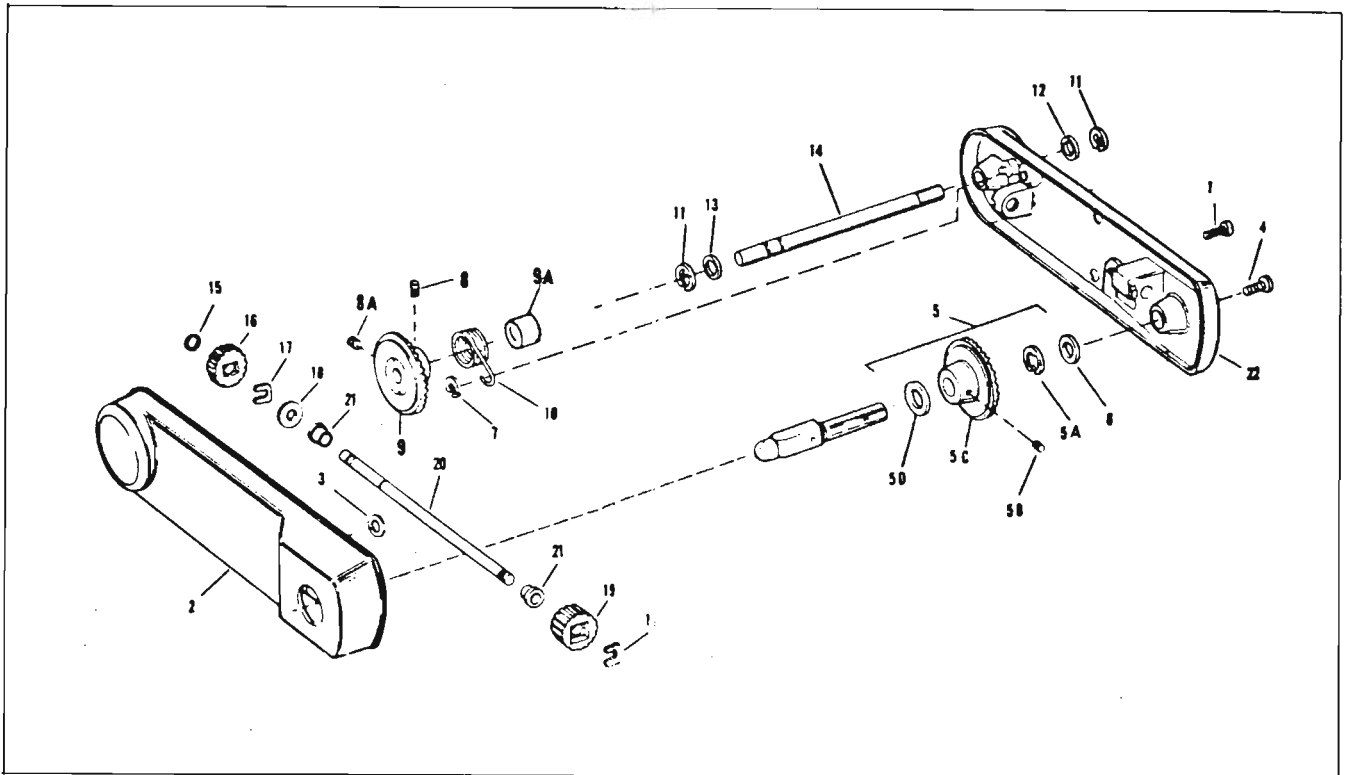


Figure 7. Front Reel Arm Assembly

FIG. & INDEX NO.	PART NO.	DESCRIPTION							UNITS PER ASSY	USABLE ON CODE
		1	2	3	4	5	6	7		
REAR REEL ARM ASSEMBLY										
8-	016263	REEL ARM ASSEMBLY, Rear							REF	
-1	30879	. SCREW, Hex washer head, special							2	
-2	45682	. COVER, Rear reel arm							1	
-3	34874	. WASHER, Shim (early models)							AR	
-4	24047	. BELT, Take-up							1	
-5	36038	. SPRING, Tension							1	
-6	31247	. SCREW, Hex socket button head, 10-32 by 1/4 inch							1	
-7	016546	. SPINDLE AND PULLEY ASSEMBLY, Take-up							1	
-8	700672	. WASHER, Shim							1	
-10	765449	. RING, Retaining, external, 0.188 inch							1	
-11	45580	. WASHER, Flat							1	
-12	45684	. SLEEVE, Rubber							1	
-13	36764	. SETSCREW, Fluted socket cup pt, 6-32 by 3/16 inch							1	
-14	45685	. GEAR, Face, lower							1	
-15	34101	. WASHER, Shim							1	
-16	45683	. SHAFT, Gear							1	
-17	31038	. RING, Retaining, external, 0.156 inch ID							1	
-18	707136	. SPRING, Torsion							1	
-19	31245	. RING, Retaining, grip type, 0.187 inch ID							1	
-20	33385	. GEAR, Spur, upper							1	
-21	31241	. CLIP, Gear retaining							2	
-22	31239	. GEAR, Spur, lower							1	
-23	34101	. WASHER, Flat							1	
-24	44412	. SHAFT, Gear							1	
-25	31236	. BEARING, Nylon							2	
-26	36764	. SETSCREW, Fluted socket cup pt, 6-32 by 3/16 inch							1	
-27	44367	. GEAR, Face, upper							1	
-28	765777	. RING, Retaining, external, 0.250 inch ID							1	
-29	700672	. WASHER, Spacer							1	
-31	49532	. SHAFT, Rear reel arm							1	
-32	014667	. ARM AND BEARING ASSEMBLY, Rear and take-up							1	

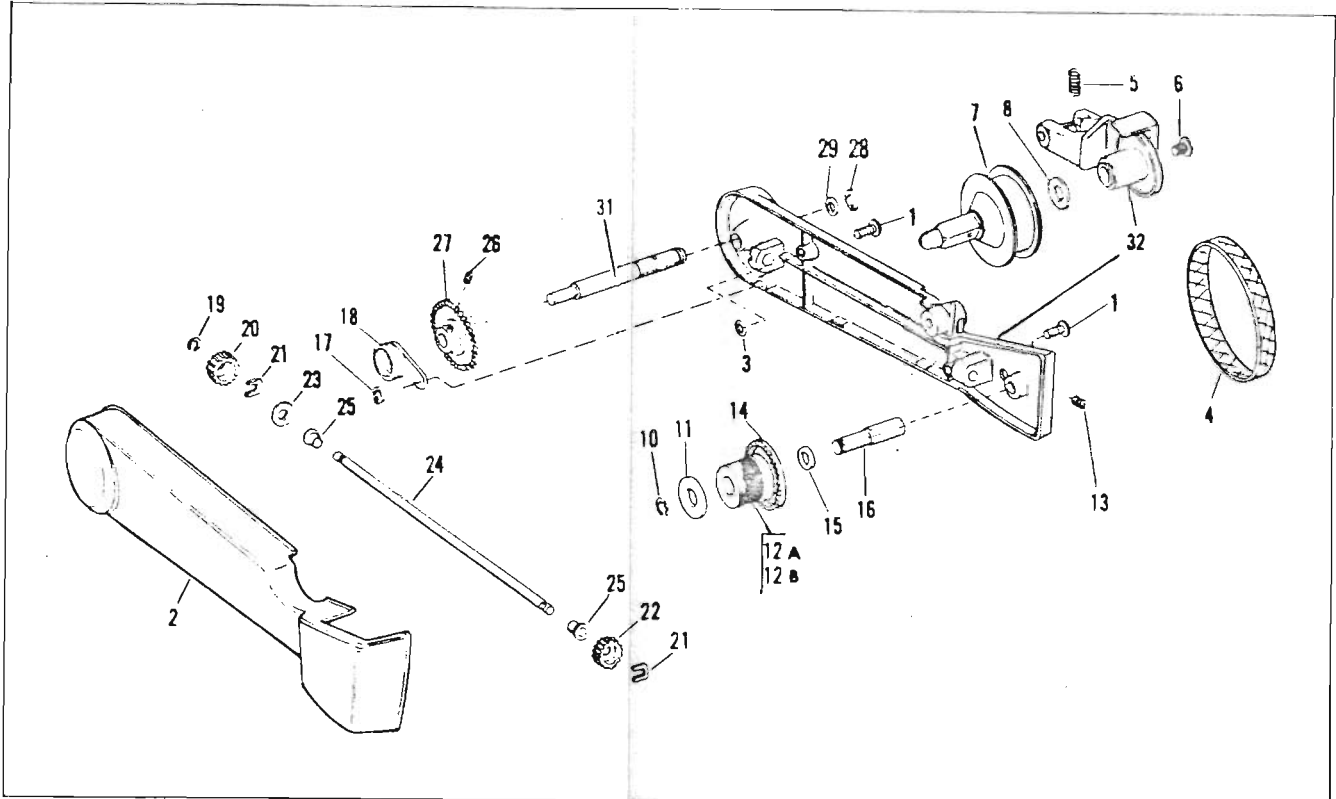


Figure 8. Rear Reel Arm Assembly

FIG. & INDEX NO.	PART NO.	DESCRIPTION	UNITS	USABLE
			PER ASSY	ON CODE
EXCITER LAMP COVER AND SOUNDHEAD				
9-	015509	COVER ASSEMBLY, Exciter lamp, complete	REF	
-1	20808	. RING, Retaining, 0.145 inch ID	1	
-2	43288	. SCREW, Cover retaining	1	
-3	30163	. SCREW, Binding head, 5-40 by 3/8 inch	2	
-4	35823	. GUIDE, Film	1	
-5	34787	. PLUG, Hole	1	
-6	36094	. SHIELD, Light (adhesive backed) (trim off excess)	1	
-7	015508	. COVER ASSEMBLY, Lamp	1	
-7A	32456	. . SCREW, Film cutter	2	
-7B	600987	. . NUT, Hex	2	
-7C	016578	. . FILM CUTTER ASSEMBLY (Includes items -7A and -7B)	1	
9-	016586	SOUNDHEAD ASSEMBLY, Complete	REF	
-8	34884	. LAMP, Exciter	1	
-9	34892	. NAMEPLATE, Lamp designation	1	
-10	49932	. SCREW, Optical slit	1	
-11	020240	. SLIT ASSEMBLY, Optical	1	
-12	31673	. SPRING, Stabilizer arm tension	1	
-13	31671	. RING, Retaining, external, 0.250 inch ID	1	
-14	31630	. SCREW, Roller adjusting	1	
-15	013935	. ARM ASSEMBLY, Stabilizer, complete	1	
-15A	30163	. . SCREW, Binding head, 5-40 by 3/8 inch	2	
-15B	31674	. . WASHER, Flat	2	
-15C	09834	. . ROLLER, Flanged, upper	1	
-15D	09835	. . ROLLER, Plain, lower	1	
-15E	30804	. . SCREW, Hex washer head, 4-40 by 1/4 inch	2	
-15F	31659	. . ARM, Stabilizer	1	
-15G	39789	. . SPRING, Torsion	1	
-15H	09832	. . ARM ASSEMBLY, Stabilizer, lower	1	
-15J	09838	. . ARM ASSEMBLY, Stabilizer, upper	1	
-16	31638	. SCREW, Fillister head, 6-32 by 0.438 inch	2	
-17	09828	. CONTACT ASSEMBLY, Exciter lamp	1	
-18	31636	. RING, Lamp release	1	
-19	36765	. SETSCREW, Fluted socket cup pt, 6-32 by 1/4 inch	1	
-20	36668	. SCREW, Pan head Sems, 6-32 by 5/16 inch	2	
-21	014532	. SOUND DRUM AND SHAFT ASSEMBLY	1	
-22	31669	. RETAINER, Light pipe	1	
-23	015569	. LIGHT PIPE AND PHOTOCELL ASSEMBLY	1	
-24	09826	. SCREW ASSEMBLY, Edge guide	1	
-25	17676	. RING, Retaining, external, 0.156 inch ID (E)	1	
-26	33837	. WASHER, Friction, 0.096 inch ID	1	
-27	44420	. ADJUSTER, Stabilizer tension	1	
-28	44511	. RETAINER, Stabilizer tension spring	1	
-29	30804	. SCREW, Hex washer head, 4-40 by 1/4 inch	1	
-30	31675	. TERMINAL, Solder lug	1	
-31	014554	. HOUSING ASSEMBLY, Soundhead, complete	1	
-31A	41321	. . PIN, Lamp mounting	3	
-31B	41320	. . BUSHING, Mounting pin	3	
-31C	602339	. . SPRING, Tension	3	
-31D	No Number	. . HOUSING, Soundhead (order complete assembly, item -31)	NP	

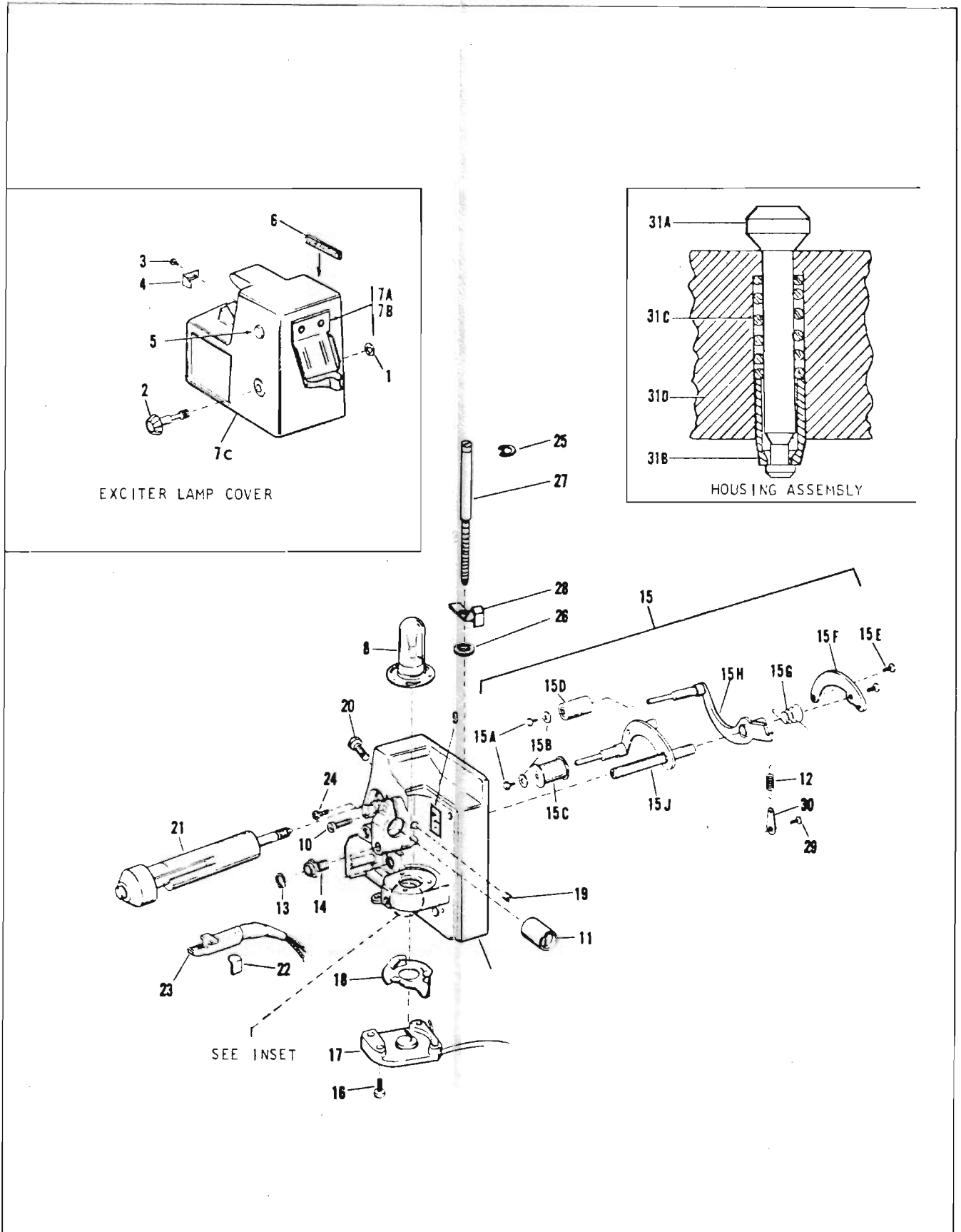


Figure 9. Exciter Lamp Cover and Soundhead

FIG. & INDEX NO.	PART NO.	DESCRIPTION							UNITS PER ASSY	USA O CO
		1	2	3	4	5	6	7		
MECHANISM ASSEMBLY										
10-	No Number	MECHANISM ASSEMBLY, Complete (see Figure 5 for mounting)							REF	
-1	31957	. PIN, Hinge, upper							1	
-2	31957	. PIN, Hinge, lower							1	
-3	31019	. WASHER, Spring tension							1	
-4	31020	. WASHER, Flat							1	
-5	016840	. LENS CARRIER ASSEMBLY							1	
-5A	45688	. . SCREW, Truss head, 3-56 by 0.434 inch							2	
-5B	31092	. . PLATE, Pressure							1	
-5D	45687	. . WASHER, Flat							2	
-5E	34897	. . SPRING, Compression							2	
-5F	35819	. . LEVER, Pressure plate							1	
-5G	30804	. . SCREW, Hex washer head, 4-40 by 1/4 inch							2	
-5H	31095	. . PLATE, Adjustment							1	
-5J	707117	. . NAMEPLATE, Lens carrier (adhesive backed)							1	
-5K	30804	. . SCREW, Hex washer head, 4-40 by 1/4 inch							2	
-5L	31093	. . SPRING, Pinion							1	
-5M	016841	. . KNOB AND PINION ASSEMBLY							1	
-5N	014576	. . CARRIER AND PIN ASSEMBLY							1	
-6	20808	. RING, Retaining, 0.145 inch ID							1	
-7	44378	. LEVER, Actuating							1	
-8	44545	. PLATE, Instruction (adhesive backed)							1	
-9	30807	. SCREW, Hex washer head, 6-32 by 1/4 inch							2	
-10	707162	. HOOD							1	
-11	36771	. SETSCREW, Fluted socket cup pt, 8-32 by 3/8 inch							4	
-12	014510	. GEAR ASSEMBLY, Sprocket, upper							1	
-13	012126	. GEAR ASSEMBLY, Sprocket, lower							1	
-14	31015	. WASHER, Spring tension							2	
-14A	708640	. WASHER, Flat							2	
-15	31928	. SCREW, Binding head, 6-32 by 1/2 inch							2	
-16	014562	. GUARD ASSEMBLY, Sprocket, upper							1	
-16A	31551	. . SCREW, Pan head, 5-40 by 1/4 inch							1	
-16B	700639	. . WASHER							1	
-16C	012332	. . CHANNEL AND ROLLER ASSEMBLY							1	
-16D	44388	. . GUARD, Sprocket							1	
-17	014536	. SPROCKET ASSEMBLY, Upper							1	
-18	31017	. WASHER, Thrust							1	
-19	013946	. SPROCKET ASSEMBLY, Lower							1	
-20	35910	. FLANGE, Sprocket							1	
-21	31017	. WASHER, Thrust							1	
-22	765449	. RING, Retaining, external, 0.188 inch ID							1	
-23	44417	. BUTTON, Rewind							1	
-24	31042	. SPRING, Rewind button							1	
-25	44224	. SCREW, Hex washer head, 4-40 by 3/16 inch							3	
-26	34878 or	. WASHER, Shim							AR	
-26	34879	. WASHER, Shim							AR	
-27	35814	. GUARD, Sprocket							2	
-28	36999	. GUARD, Sprocket							1	
-29	36081	. ROLLER							3	
-30	35830	. SPRING, Torsion							3	
-31	31049	. SCREW, Binding head, 6-32 by 1/4 inch							1	
-32	44321	. GUIDE, Film exit							1	
-33	44546	. SEAL (cement in place)							1	E
-34	36764	. SETSCREW, Fluted socket cup pt, 6-32 by 3/16 inch							2	E
-35	44381	. LEVER, Animation switch							1	E
-35A	44299	. NAMEPLATE, Animation lever (adhesive backed)							1	E
-36	31038	. RING, Retaining, external, 0.156 inch ID							1	E
-37	44535	. CRANK, Animation switch lever							1	E
-38	31536	. PLUG (Adhesive backed)							1	A
-39	44596	. DECAL, Autoload position "4" (adhesive backed)							1	
-40	44544	. LABEL, Rewind instruction							1	

E

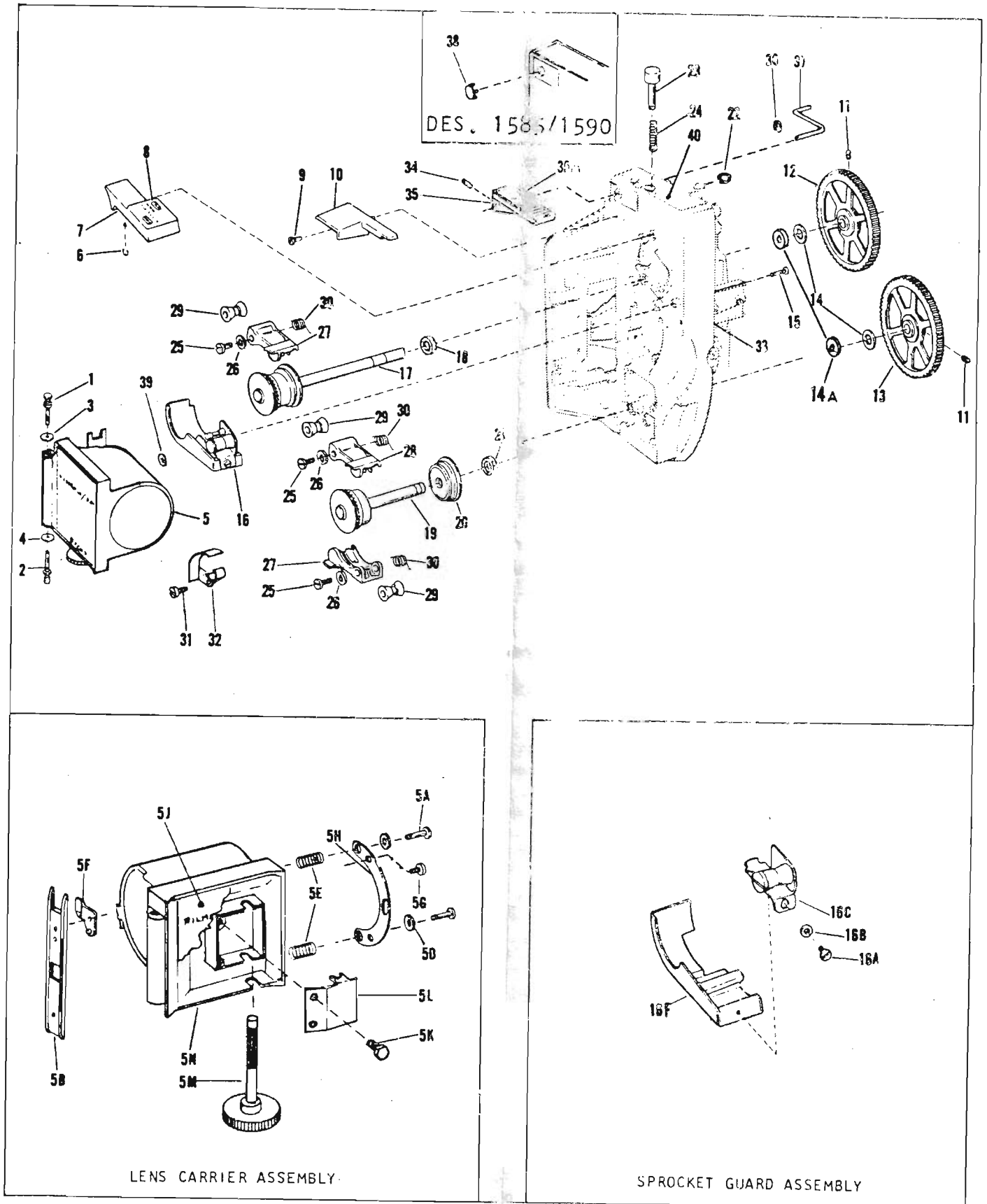


Figure 10. Mechanism Assembly

FIG. & INDEX NO.	PART NO.	DESCRIPTION	UNITS	USABLE
			PER ASSY	ON CODE
MECHANISM ASSEMBLY (CONT'D)				
11-1	30164	. SCREW, Binding head, 4-40 by 3/16 inch	3	
-2	36082	. ROLLER, Flanged	3	
-3	97509	. RING, Retaining, external, 0.250 inch ID	1	
-4	48939	. ARM, Threading	1	
-4A	44597	. DECAL, NO. 2 (adhesive backed)	1	
-5	48938	. SPRING, Torsion	1	
-6	36061	. SCREW, Truss head, 5-40 by 0.123 inch	1	
-7	44469	. ROLLER, Idler	1	
-8	44361	. STUD, Idler roller	1	
-9	44359	. ECCENTRIC, Locking lever	1	
-10	49979	. SPRING, Torsion	1	
-11	016314	. LEVER AND GUIDE ASSEMBLY, Autothread	1	
-11A	36061	. . SCREW, Truss head, 5-40 by 0.123 inch	1	
-11B	44338	. . GUIDE, Film	1	
-11C	41330	. . ROLLER, Flanged	1	
-11D	35066	. . SCREW, Round head, 4-40 by 1/8 inch	1	
-11E	44343	. . GUIDE, Film	1	
-11F	016313	. . LEVER ASSEMBLY, Autothread	1	
-12	17676	. RING, Retaining, external, 0.156 inch ID	1	
-13	35874	. LOOPFORM, Lower	1	
-14	35838	. SPRING, Torsion	1	
-15	31551	. SCREW, Pan head, 5-40 by 1/4 inch	1	
-16	35822	. BRACKET, Back-up	1	
-17	31413	. RING, Retaining, 0.416 inch ID	1	
-18	35834	. WASHER, Flat	2	
-19	35850	. GUIDE, Film, lower	1	
-20	31551	. SCREW, Pan head, 5-40 by 1/4 inch	2	
-21	015924	. PLATE ASSEMBLY, Guard mounting, lower	1	
-22	17639	. RING, Retaining, external, 0.125 inch ID	1	
-23	011221	. LEVER AND PIVOT ASSEMBLY, Toggle	1	
-24	35846	. GUIDE, Film, lower	1	
-25	303541	. SCREW, Binding head, 3-56 by 1/8 inch	2	
-26	36018	. SPRING, Leaf	1	
-27	33347	. SCREW, Locking, hex head	1	
-28	09789	. LEVER ASSEMBLY, Threading	1	
-29	013922	. LOOPFORMER ASSEMBLY, Lower	1	
-30	17639	. . RING, Retaining, external, 0.125 inch ID	1	
-31	011233	. . LOOPFORMER ASSEMBLY, Upper	1	
-32	31555	. . SCREW, Pan head, 3-56 by 3/16 inch	1	
-33	83663	. . WASHER, Lock	1	
-33A	31451	. . WASHER, Flat	1	
-34	35820	. . RETRACTOR, Shuttle	1	
-35	011218	. . LINK AND STUD ASSEMBLY, Connecting	1	
-36	41342	. SCREW, Hex washer head, 10-32 by 1/4 inch	1	
-37	30807	. SCREW, Hex washer head, 6-32 by 1/4 inch	1	
-38	49980	. CATCH, Lens carrier	1	
-40	31551	. SCREW, Pan head, 5-40 by 1/4 inch	2	
-41	011212	. PLATE ASSEMBLY, Guard mounting, upper	1	
-42	36763	. SETSCREW, Fluted socket cup pt, 6-32 by 1/8 inch	2	
-43	011214	. SHAFT AND LINK ASSEMBLY, Upper loopformer	1	
-44	44513	. SPRING, Torsion	1	
-45	34878	. WASHER, Flat	1	

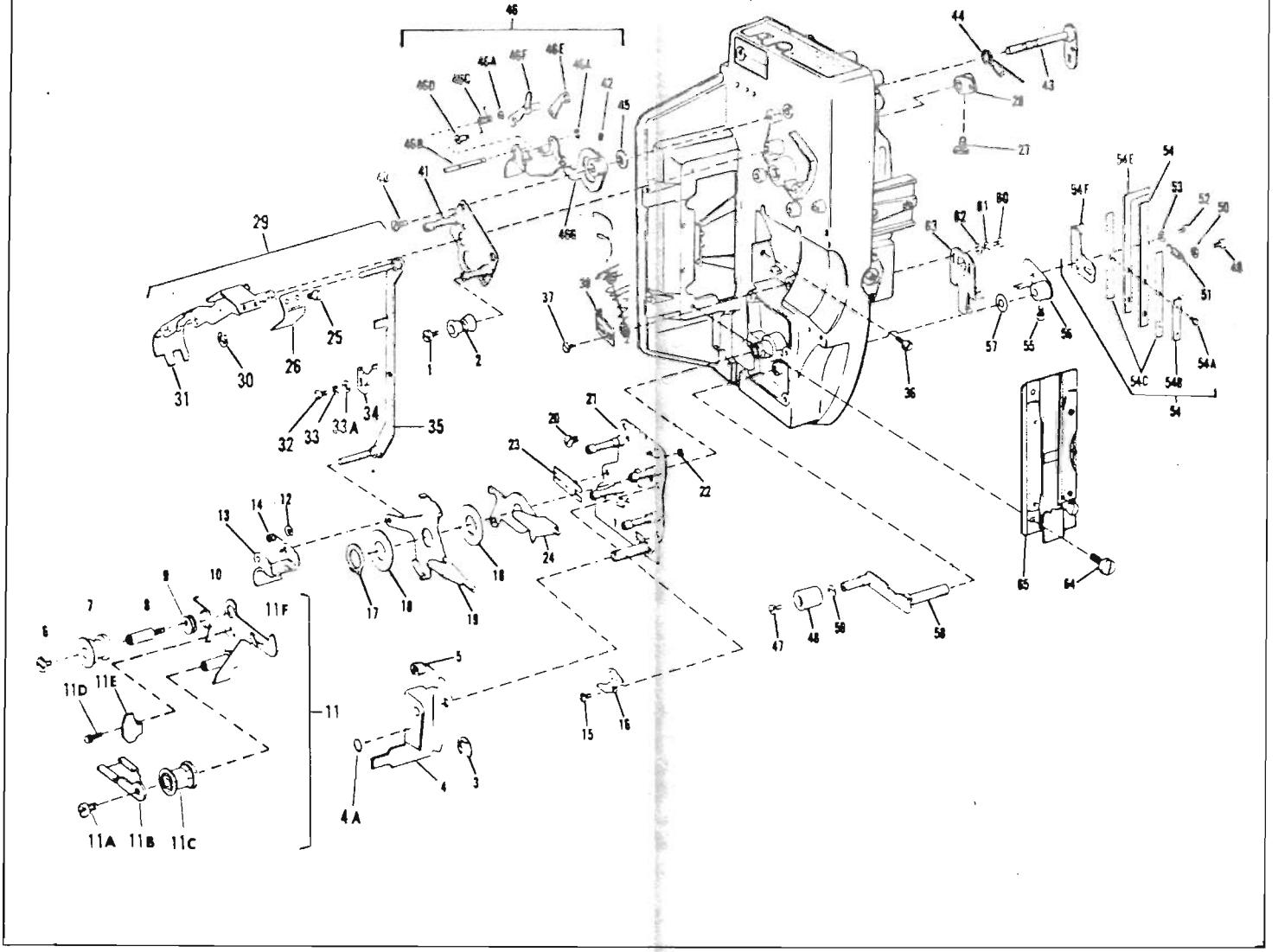


Figure 11. Mechanism Assembly (continued)

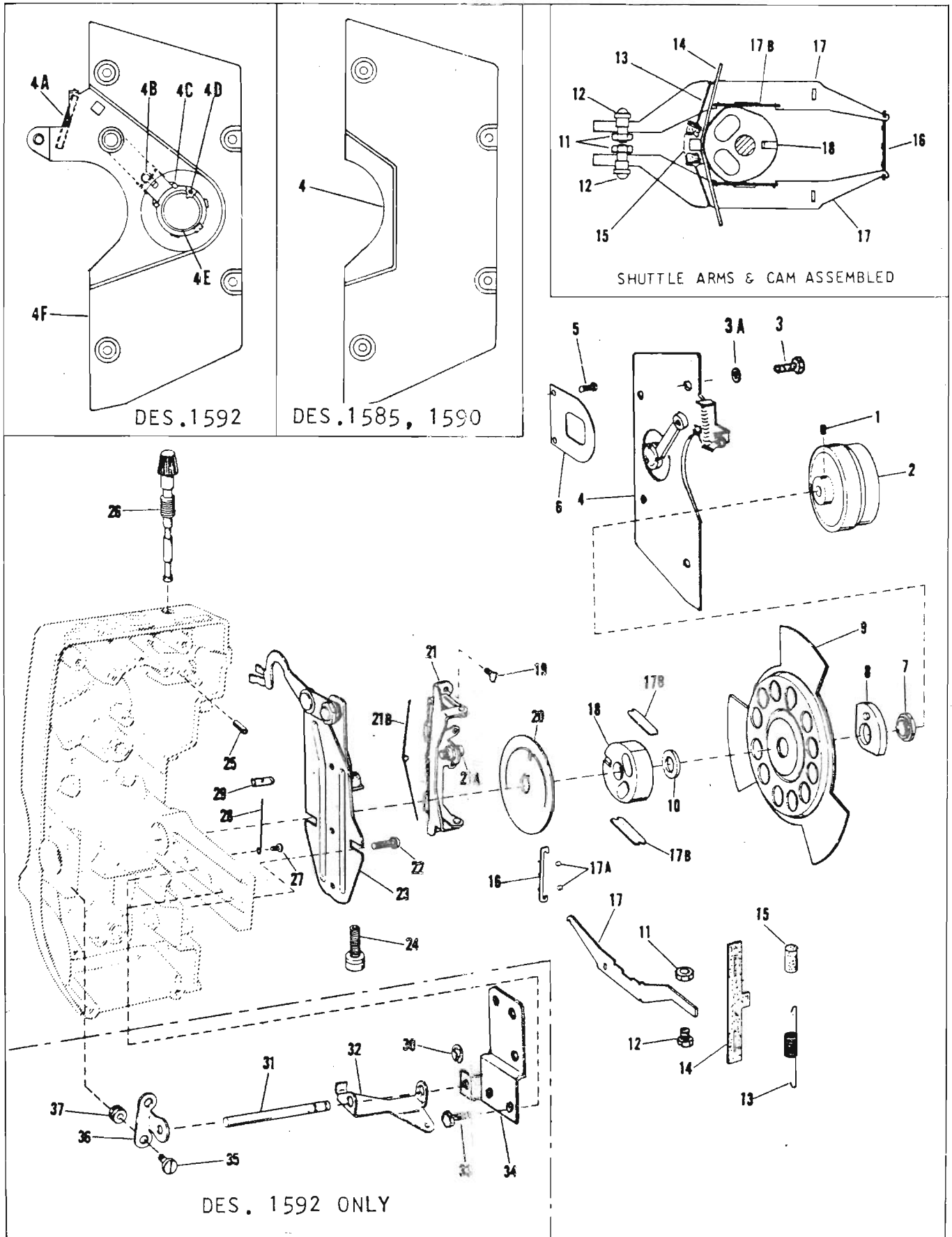


Figure 12. Mechanism Assembly (Continued)

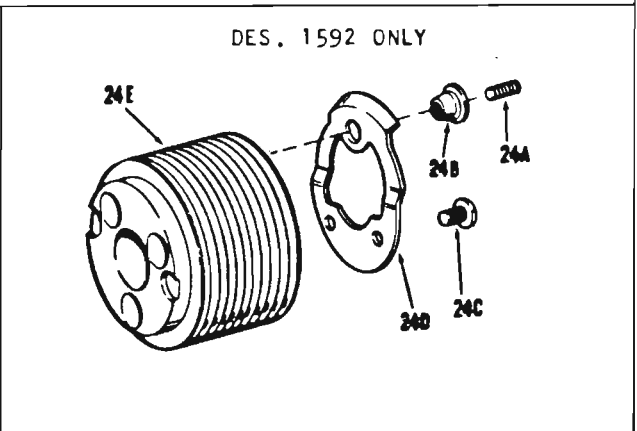
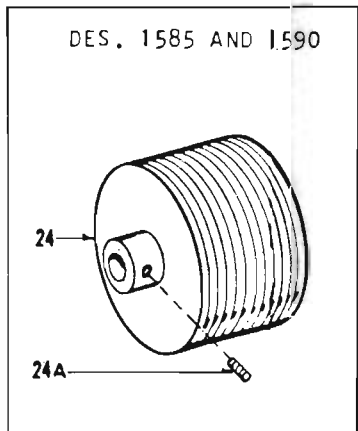
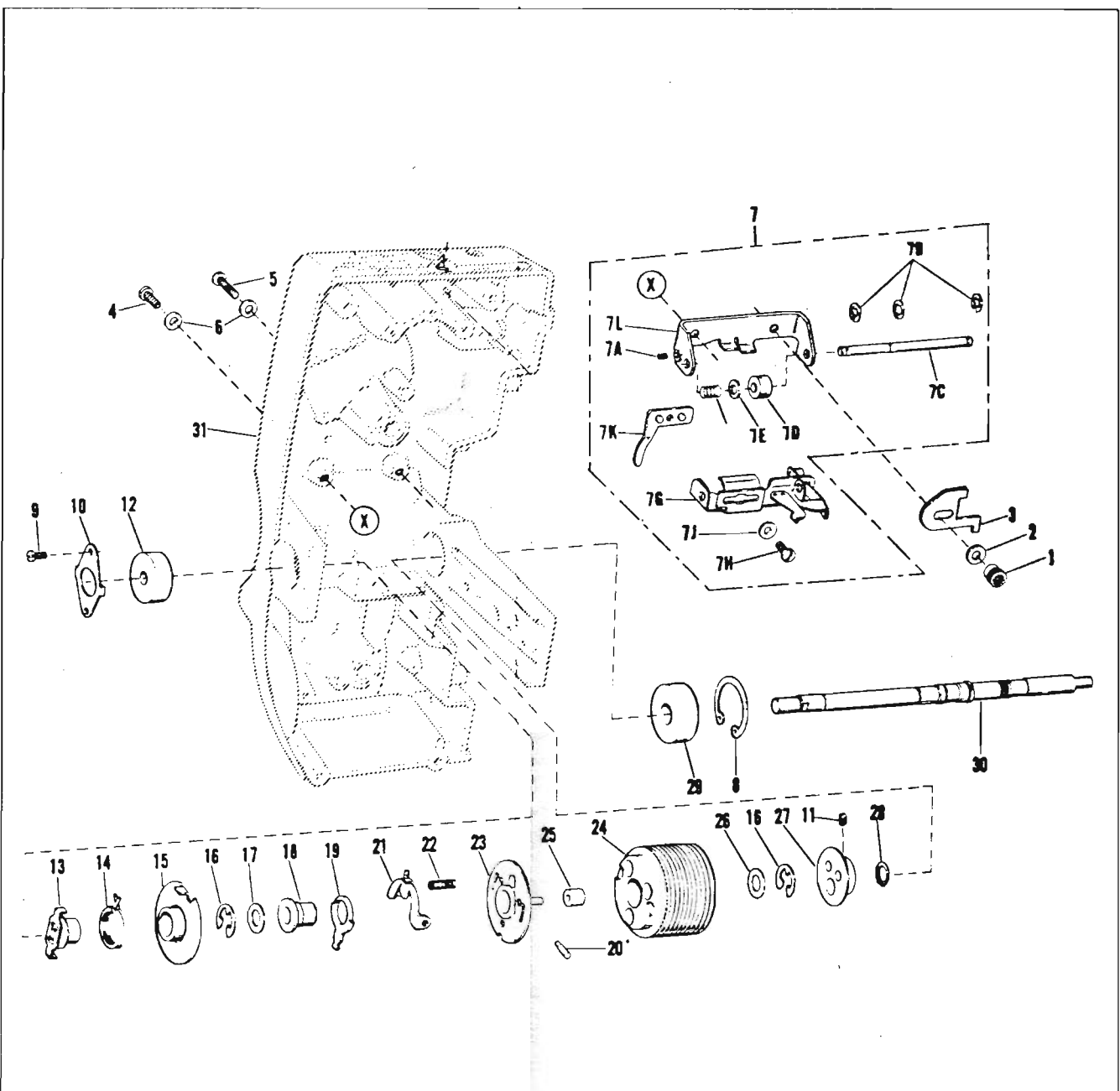


Figure 3. Mechanism Assembly (Continued)

FIG. & INDEX NO.	PART NO.	1	2	3	4	5	6	7	DESCRIPTION	UNITS	USABLE
										PER ASSY	ON CODE

APERTURE PLATE ASSEMBLY

FIG. & INDEX NO.	PART NO.	DESCRIPTION	UNITS PER ASSY	USABLE ON CODE
14-	No Number	APERTURE PLATE ASSEMBLY (See Figure 11 for mounting)		REF
-1	31978	. SCREW, Slotted pan head, 3-56 by 1/8 inch	2	
-2	36064	. RAIL, Film guide	1	
-3	37296	. SCREW, Slotted pan head, 3-56 by 1/4 inch	2	
-4	36078	. COVER, Spring retaining	1	
-5	37295	. BUSHING, Spacer	2	
-6	37293	. RAIL, Film tension	1	
-7	31135	. SPRING, Side tension	1	
-8	31978	. SCREW, Slotted pan head, 3-56 by 1/8 inch	1	
-9	36075	. GUIDE, Film	1	
-10	012132	. PLATE, Aperture	1	

FRONT COVER AND SPEAKER ASSEMBLY
(CS, CHS AND MLS MODELS ONLY)

FIG. & INDEX NO.	PART NO.	DESCRIPTION	UNITS PER ASSY	USABLE ON CODE
15-	016507	COVER AND SPEAKER ASSEMBLY, Front		REF
-1	016948	. COVER ASSEMBLY, Front	1	
-2	707412	. NAMEPLATE, Front cover (adhesive backed)	1	
-3	31561	. FOOT, Rubber (cement in place)	2	
-3A	700816	. RIVET, Tubular	4	
-4	45083	. LATCH, Cover	2	
-5	707751	. PLATE, Latch	2	
-6	49284	. BAR, Support	1	
15-	No Number	. COVER, Front (replace cover assembly, item -1)		NP
-7	45102	. NUT, Tinnerman	7	
-8	016508	. BAFFLE AND SPEAKER ASSEMBLY, Complete	1	
-9	49747	. GRILL CLOTH (Cement four corners)	1	
-10	49094	. SCREW, Hex washer head	4	
-11	707767	. PLATE, Shield	1	
-12	707459	. GASKET	4	
-13	35164	. NUT, Hex	8	
-14	600866	. SCREW, Slotted flat head	8	
-15	707414	. CLAMP, Leadwire retainer	1	
-16	49744	. SPEAKER	2	
-17	043384	. LINE CORD ASSEMBLY	1	
-18	707416	. SCREW, Slotted flat head	4	
-19	436895	. CORD WRAP	1	
-20	34053	. SCREW, Pan head tapping	2	
-21	434684	. JACK, Auxiliary speaker	1	
-22	437724	. NAMEPLATE, External speaker	1	
-23	707769	. CUSHION	1	
-24	707770	. CUSHION	1	
-25	706678	. BAFFLE BOARD	1	

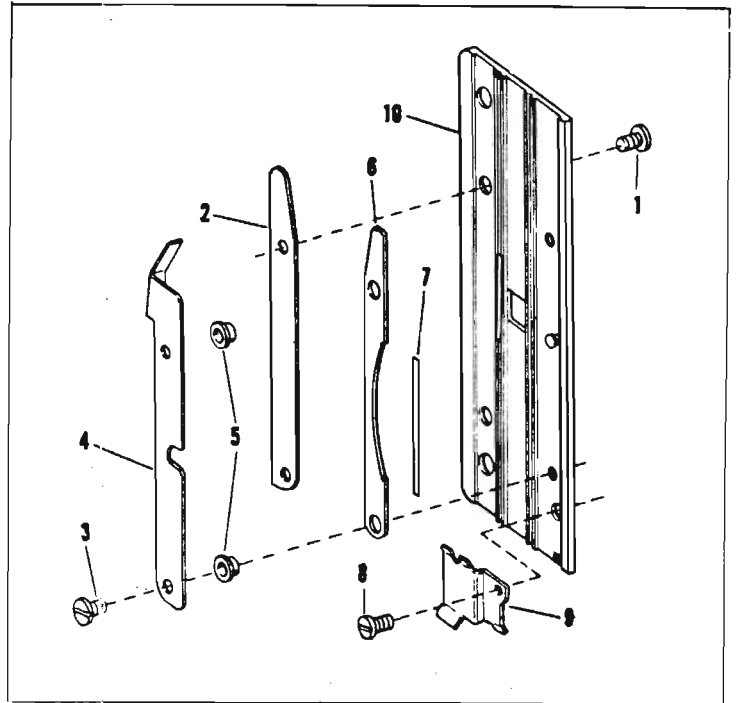


Figure 14. Aperture Plate Assembly

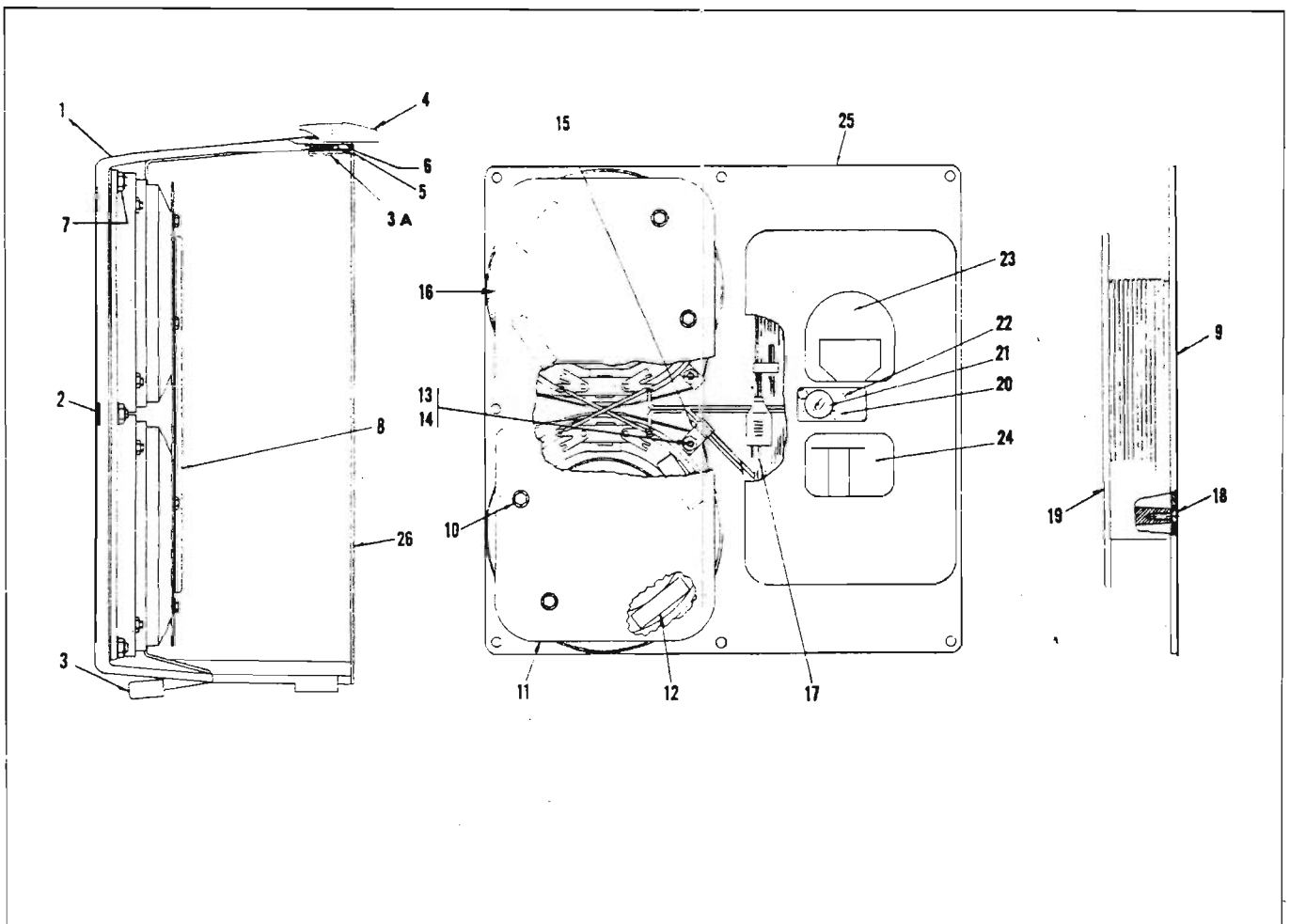
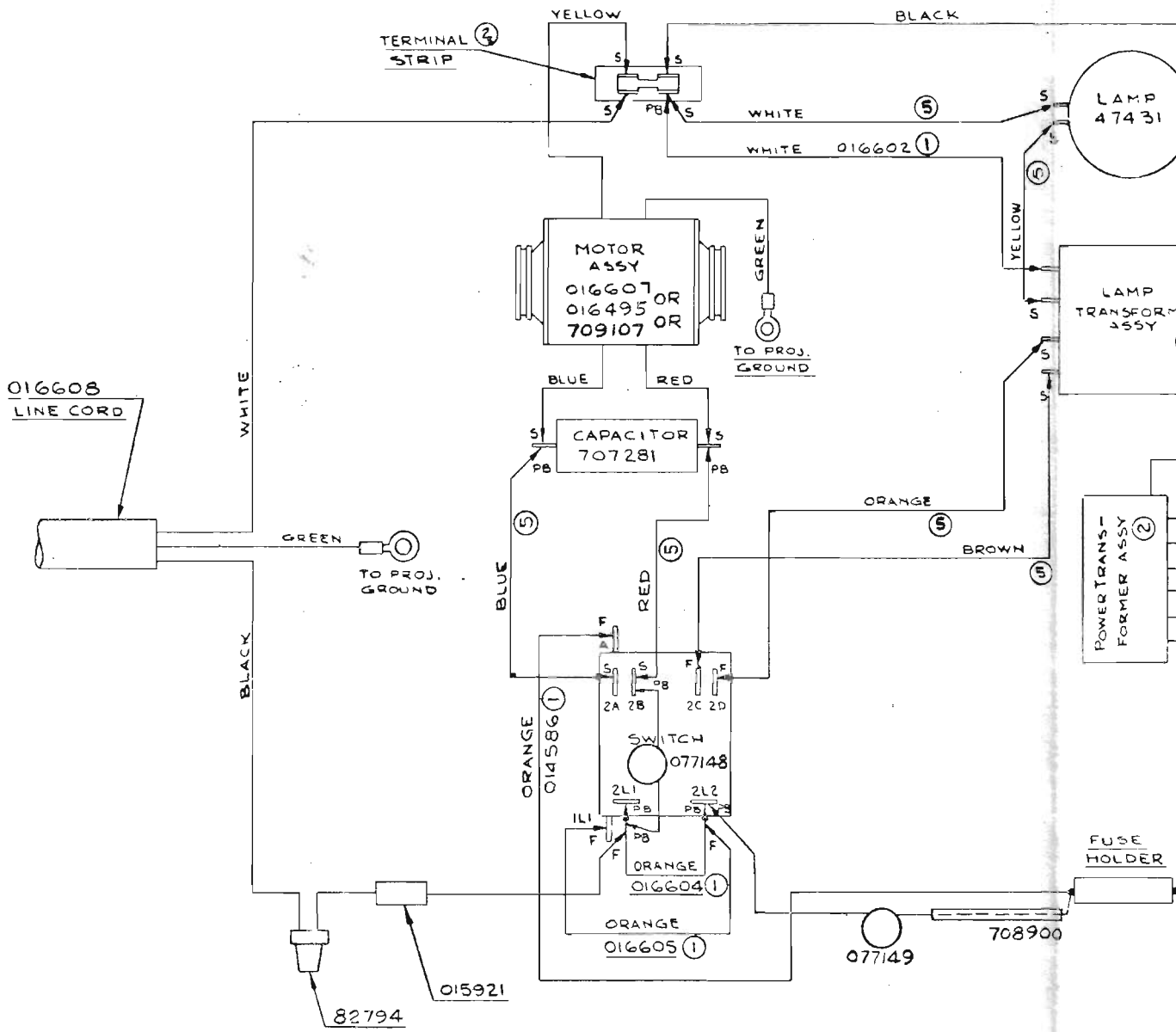
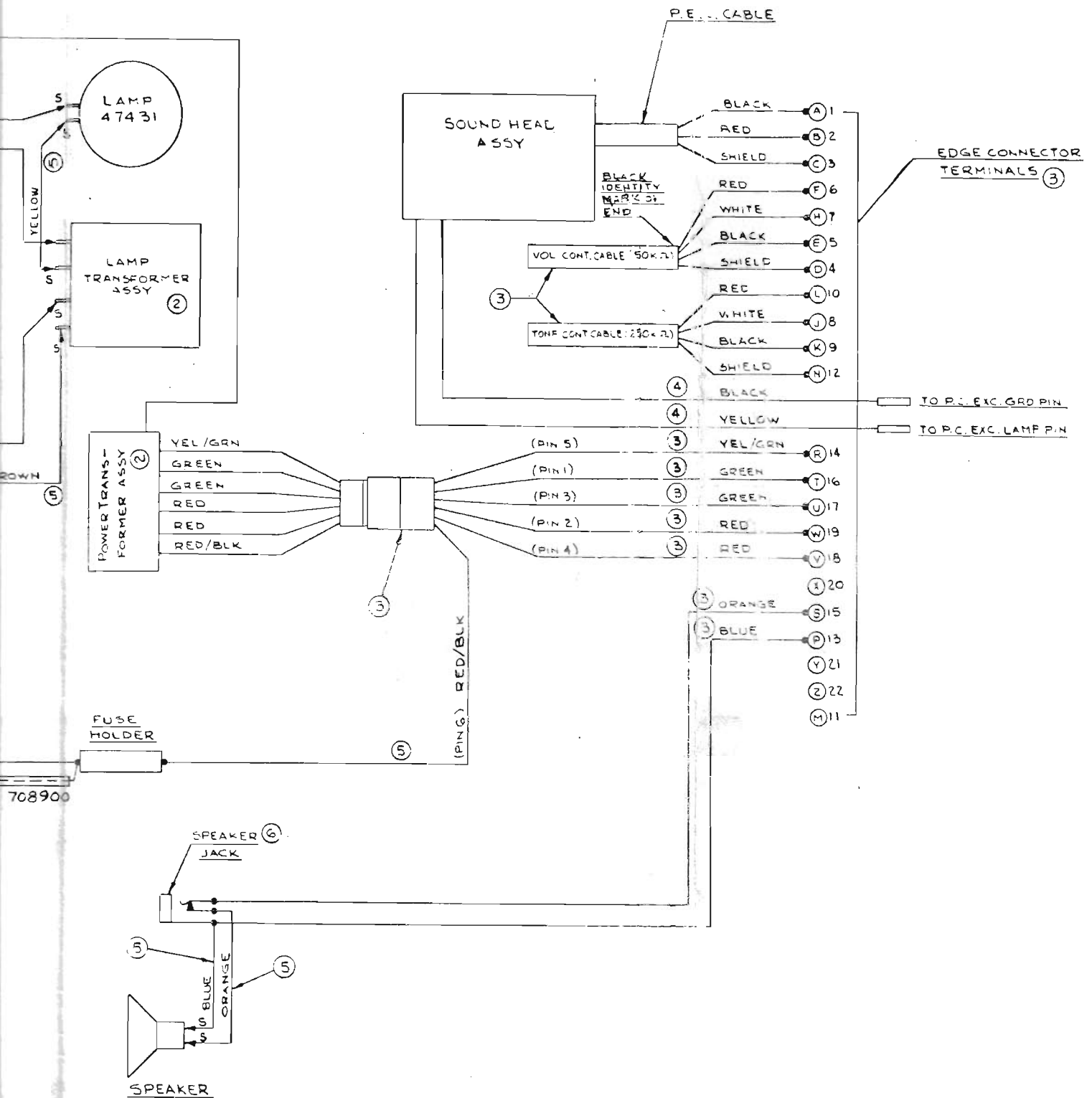


Figure 15. Front Cover and Speaker Assembly
 (CS, CHS and MLS Models Only)



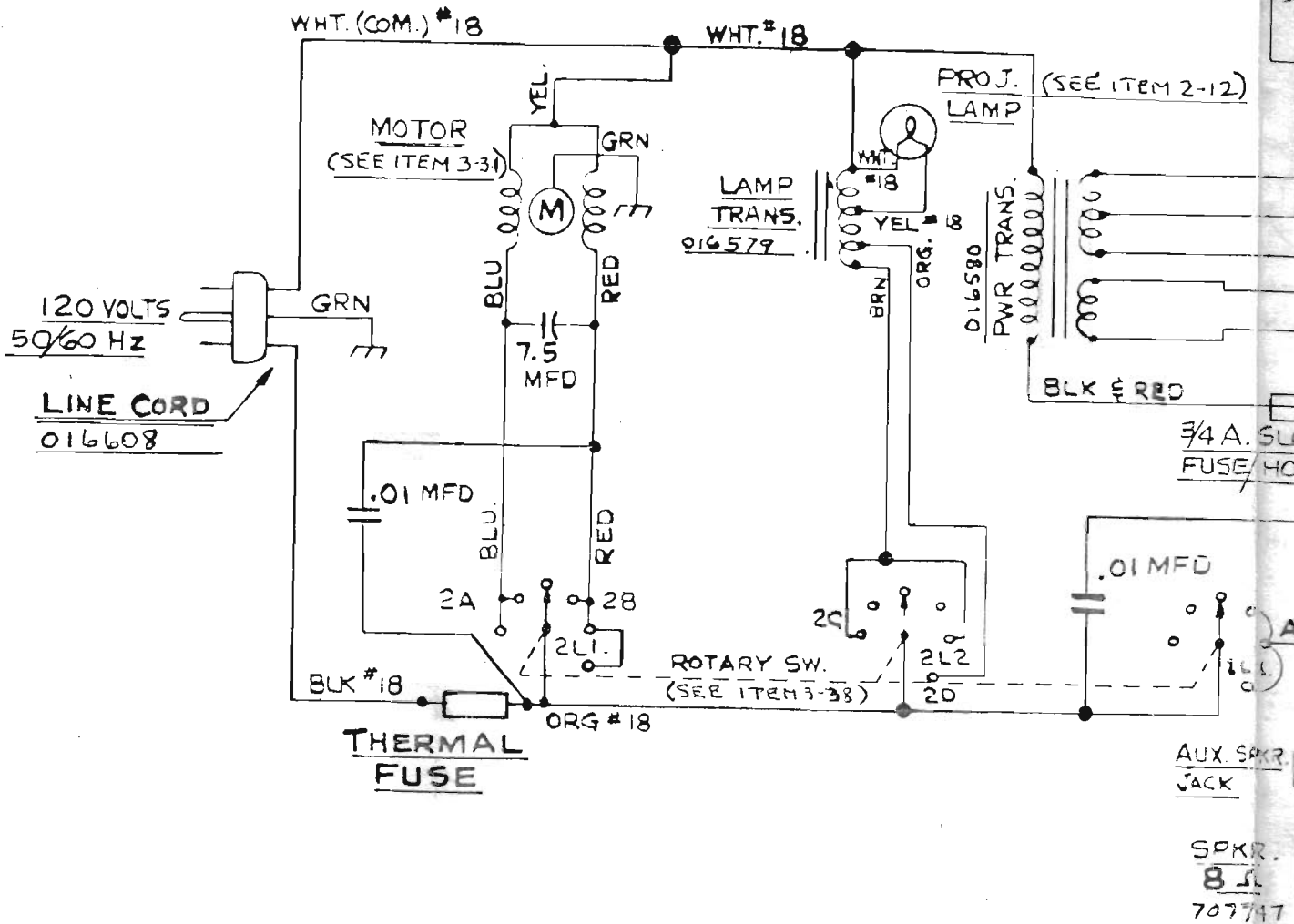
PICTORIAL WIRING DIAGRAM



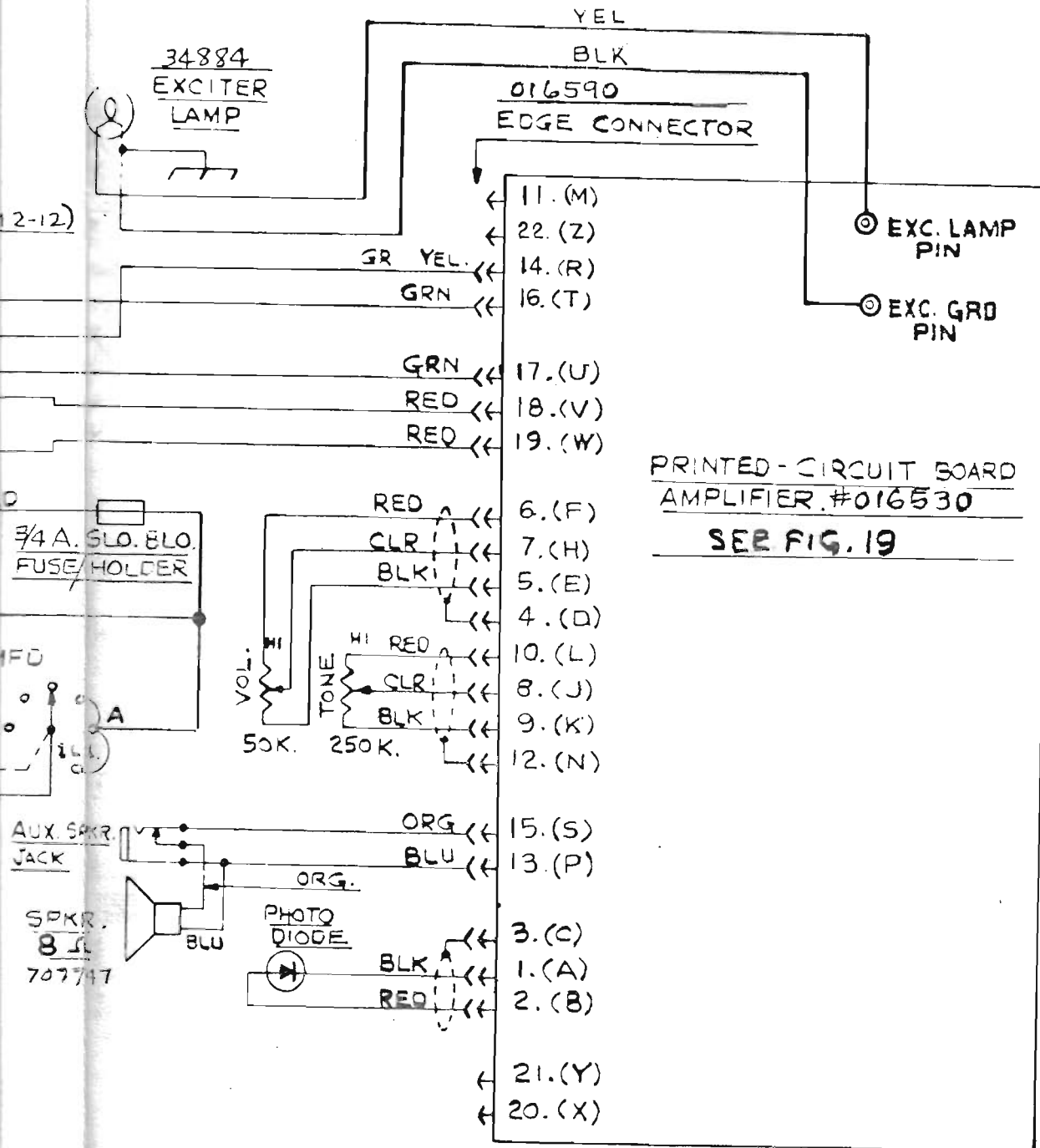
NG DIAGRAM

(SEE REVERSE SIDE FOR SCHEMATIC

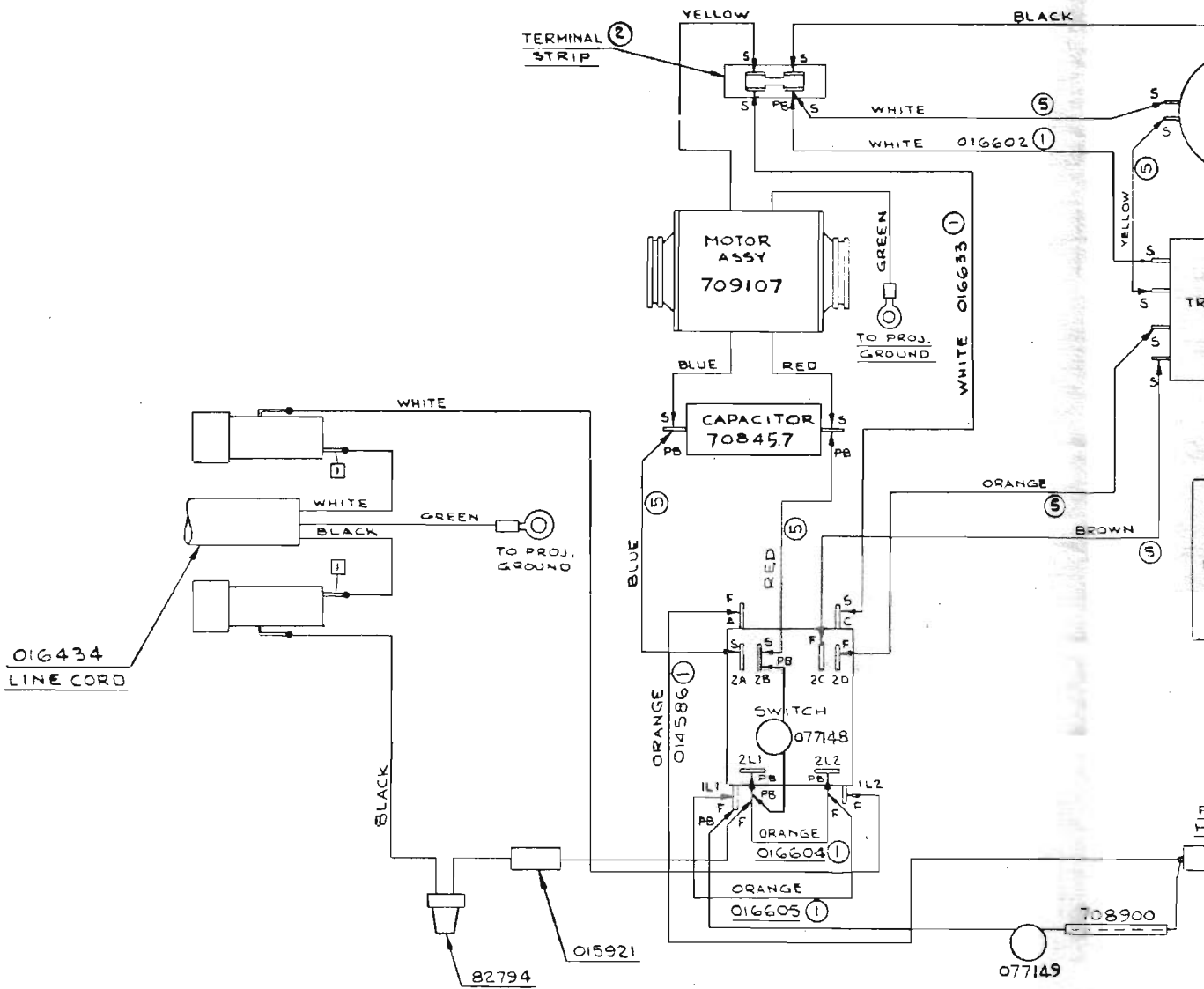
Figure 16. Projector/Pictorial Diagram
 (All Models Except 1585ML/MLH and 1592C's



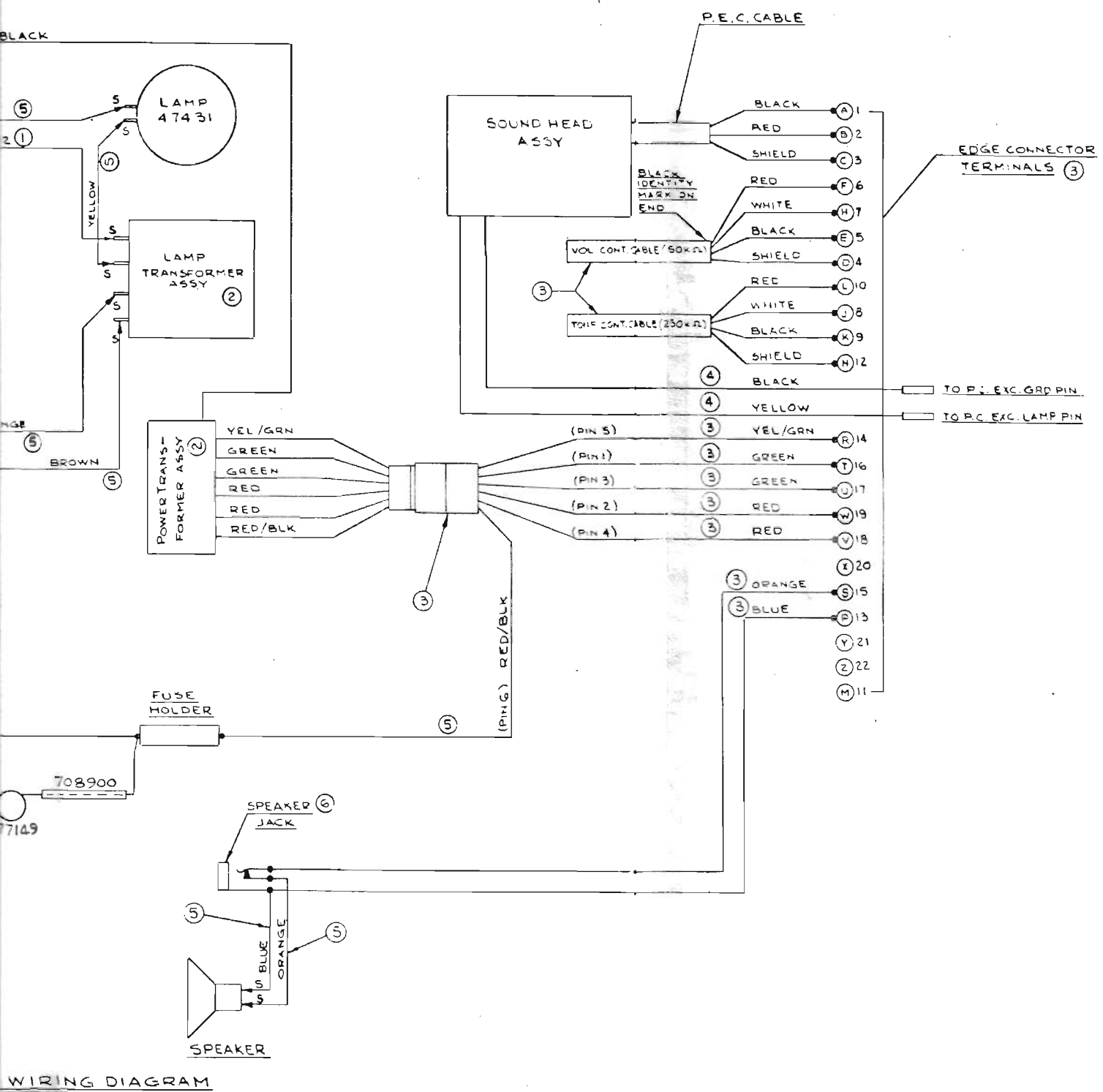
SCHEMATIC



EMATIC-1585C/CS/CH/CH5

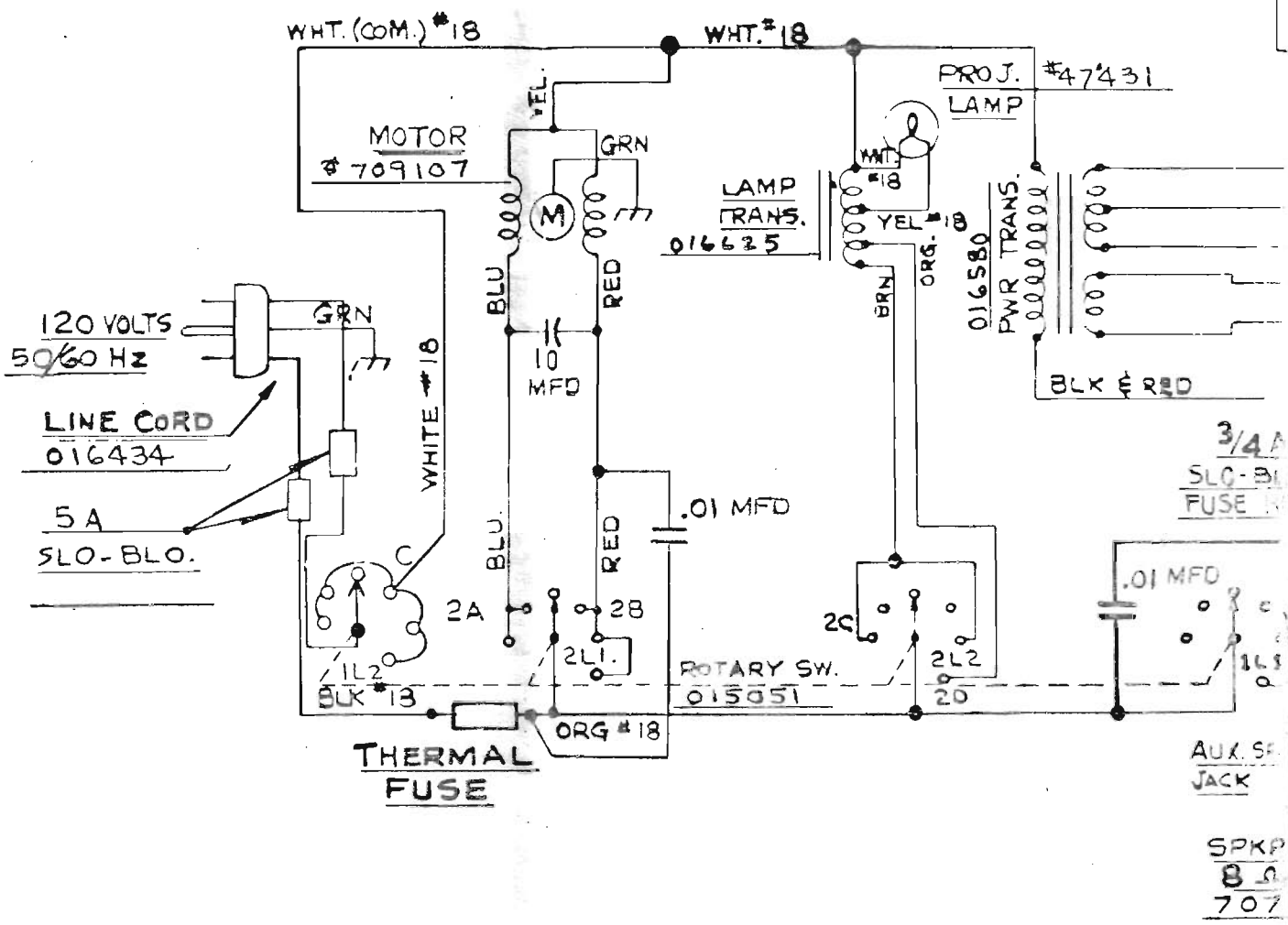


PICTORIAL WIRING DIAG

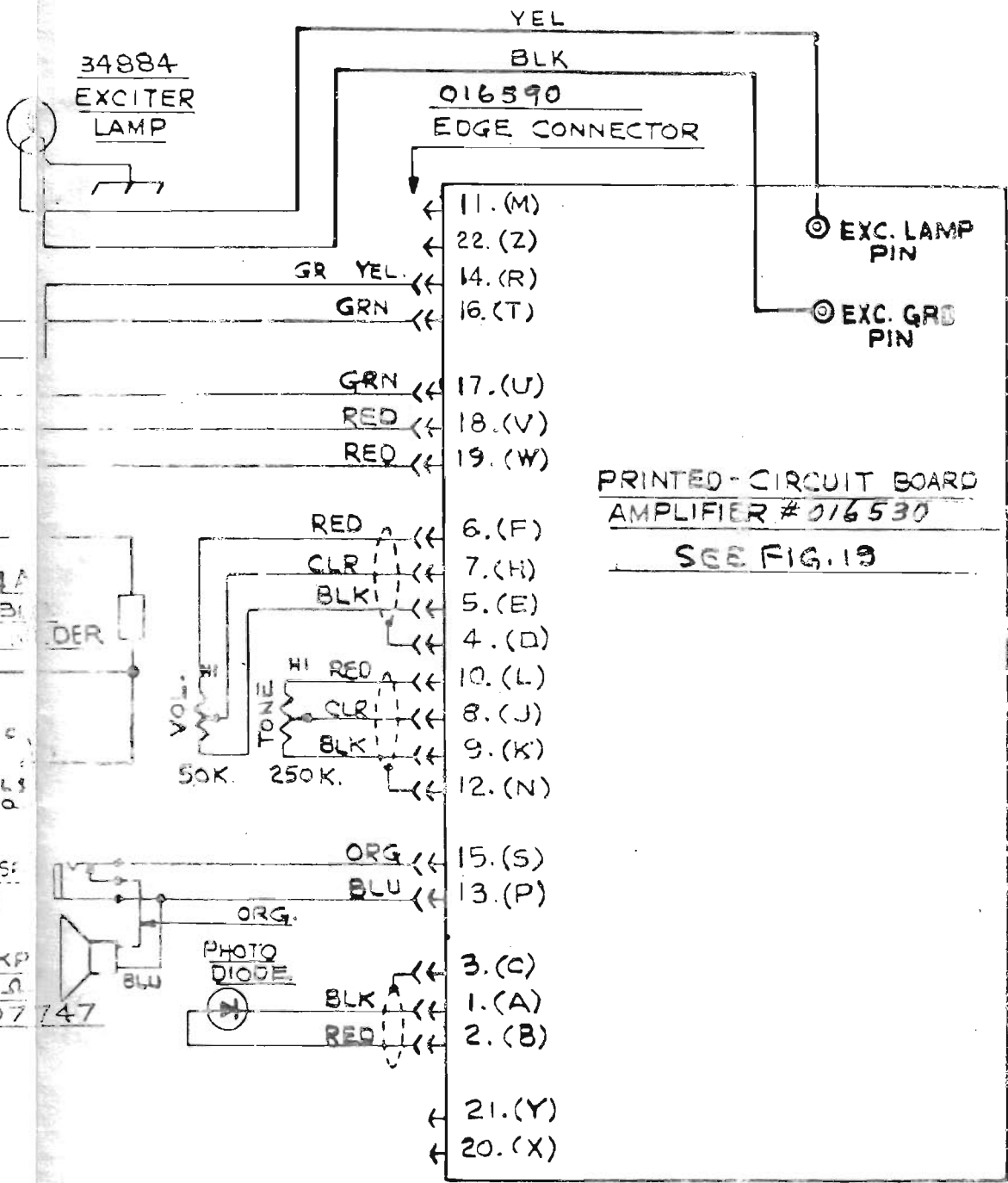


SEE REVERSE SIDE FOR SCHEMATIC

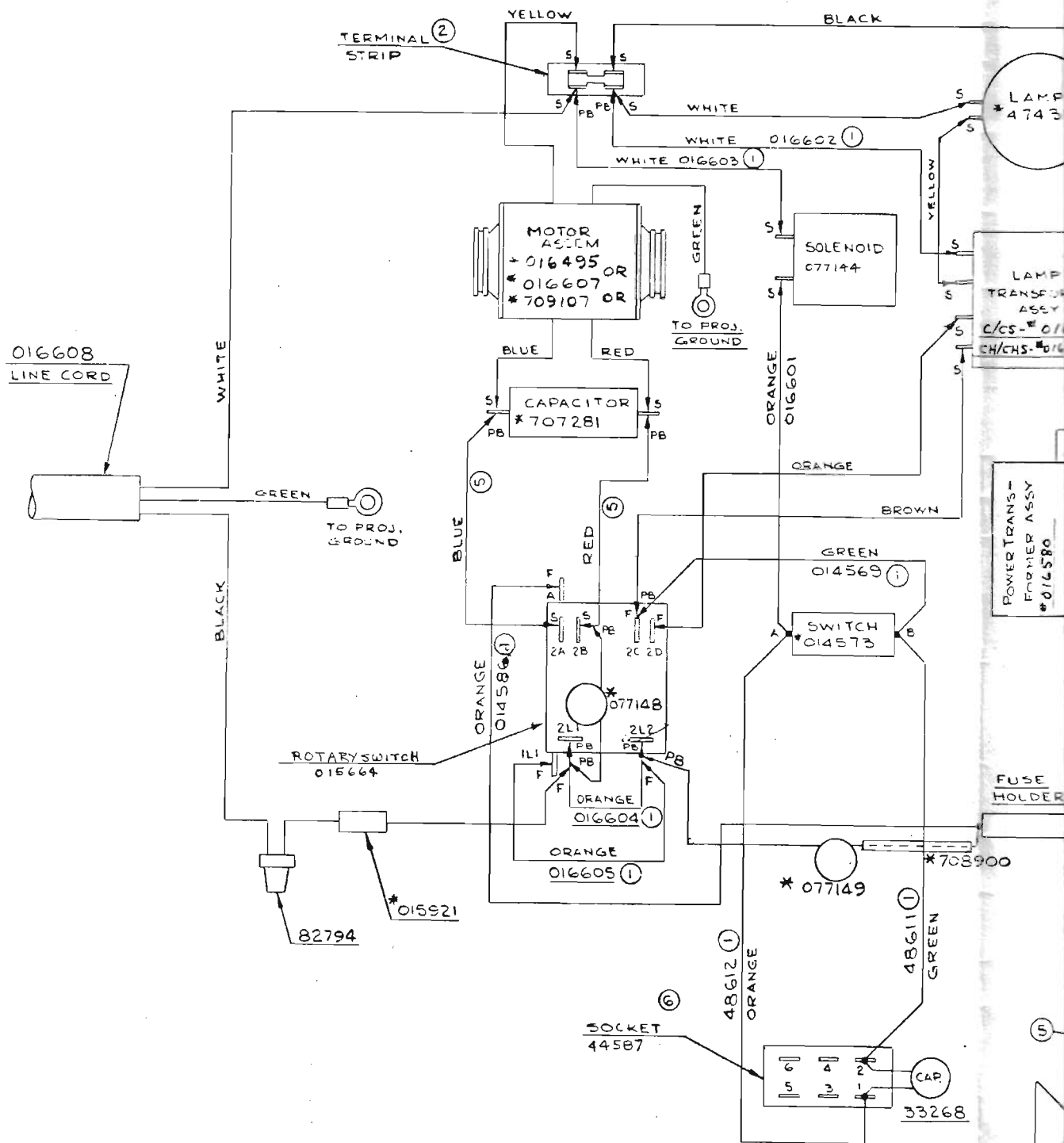
Figure 17. Projector Pictorial Diagram
 (Models 1585ML and 1585MLS)



SCHEMATIC-1585ML



- 1585ML/MLS



PICTORIAL WIRING DIAGRAM

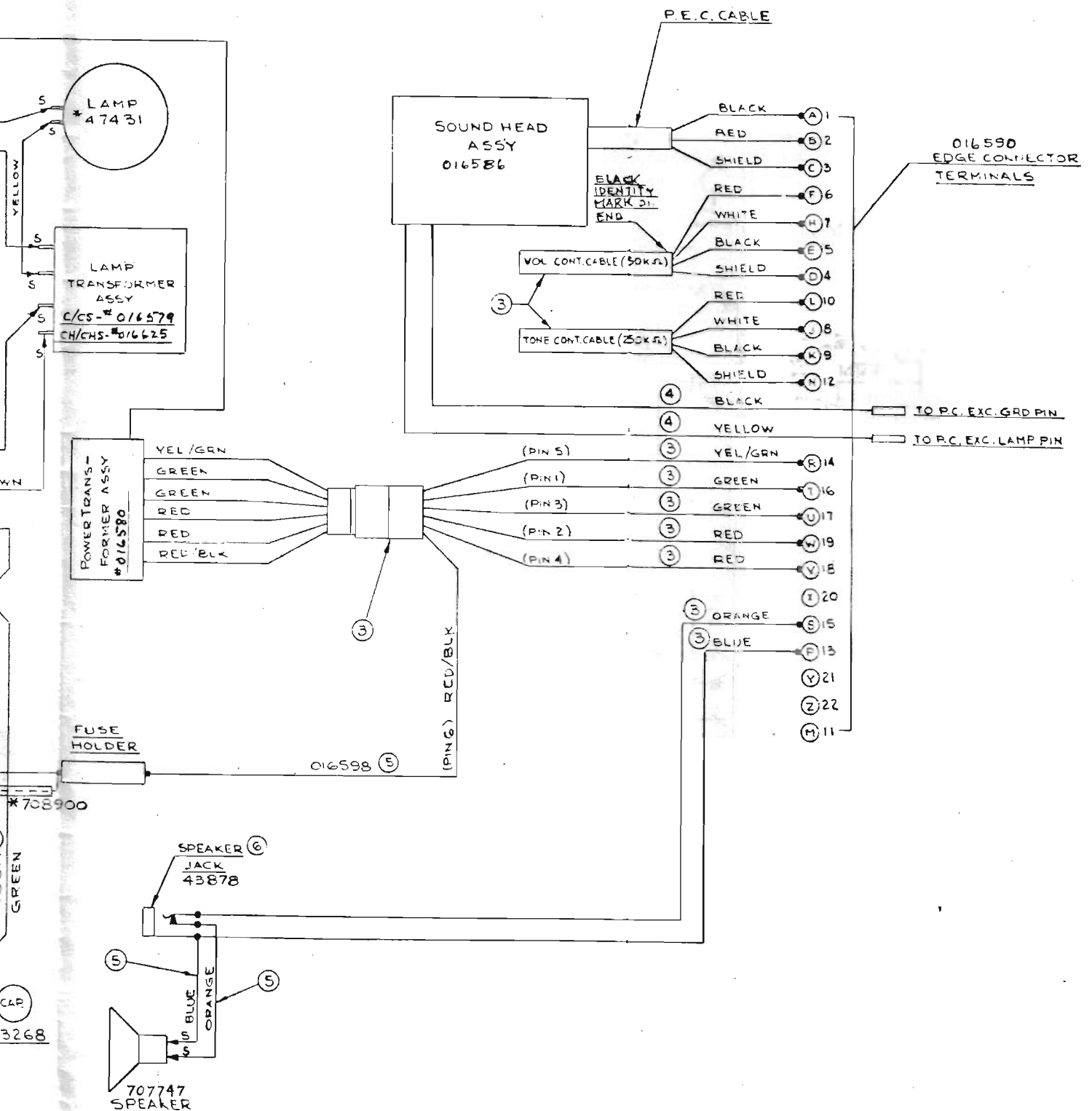
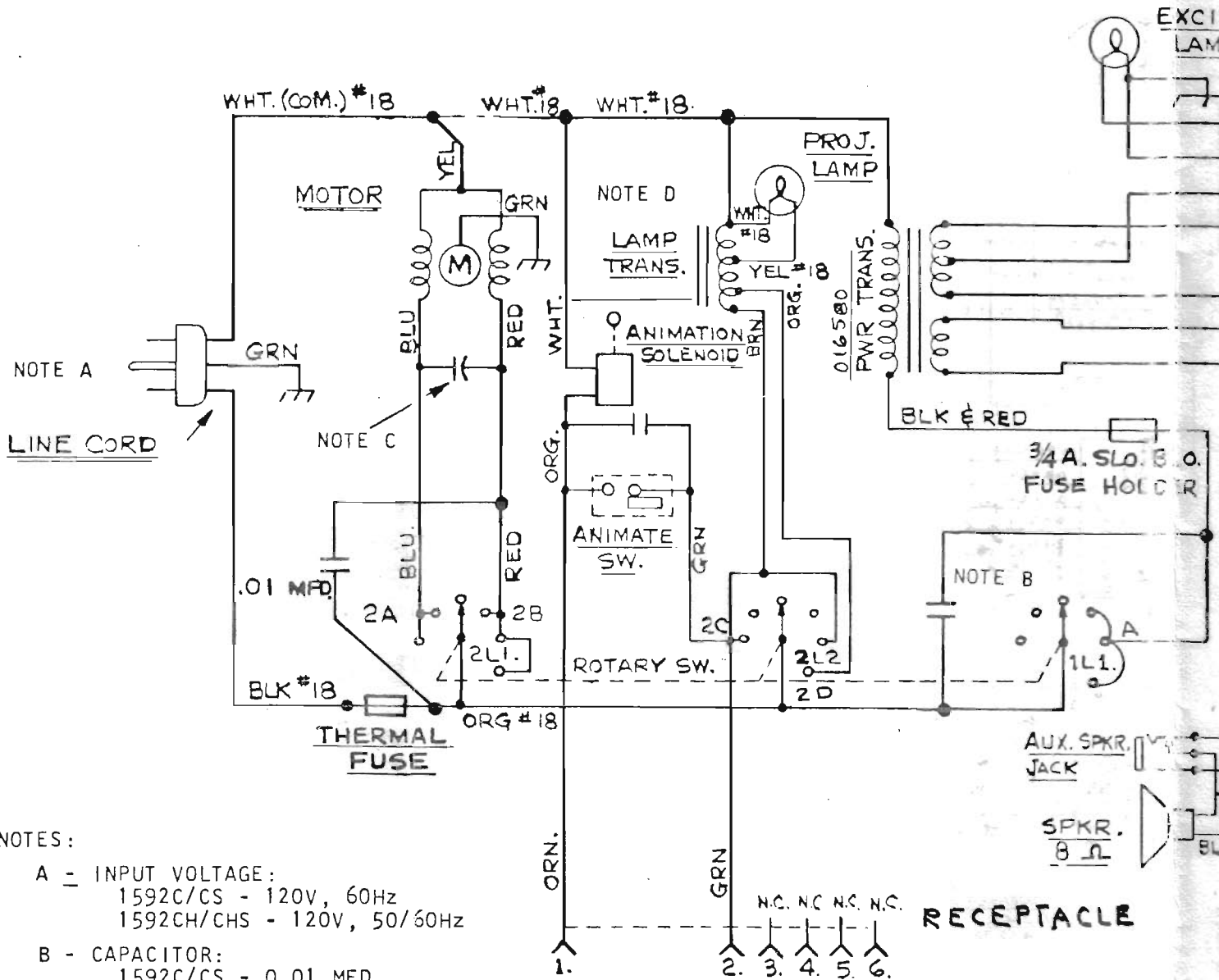


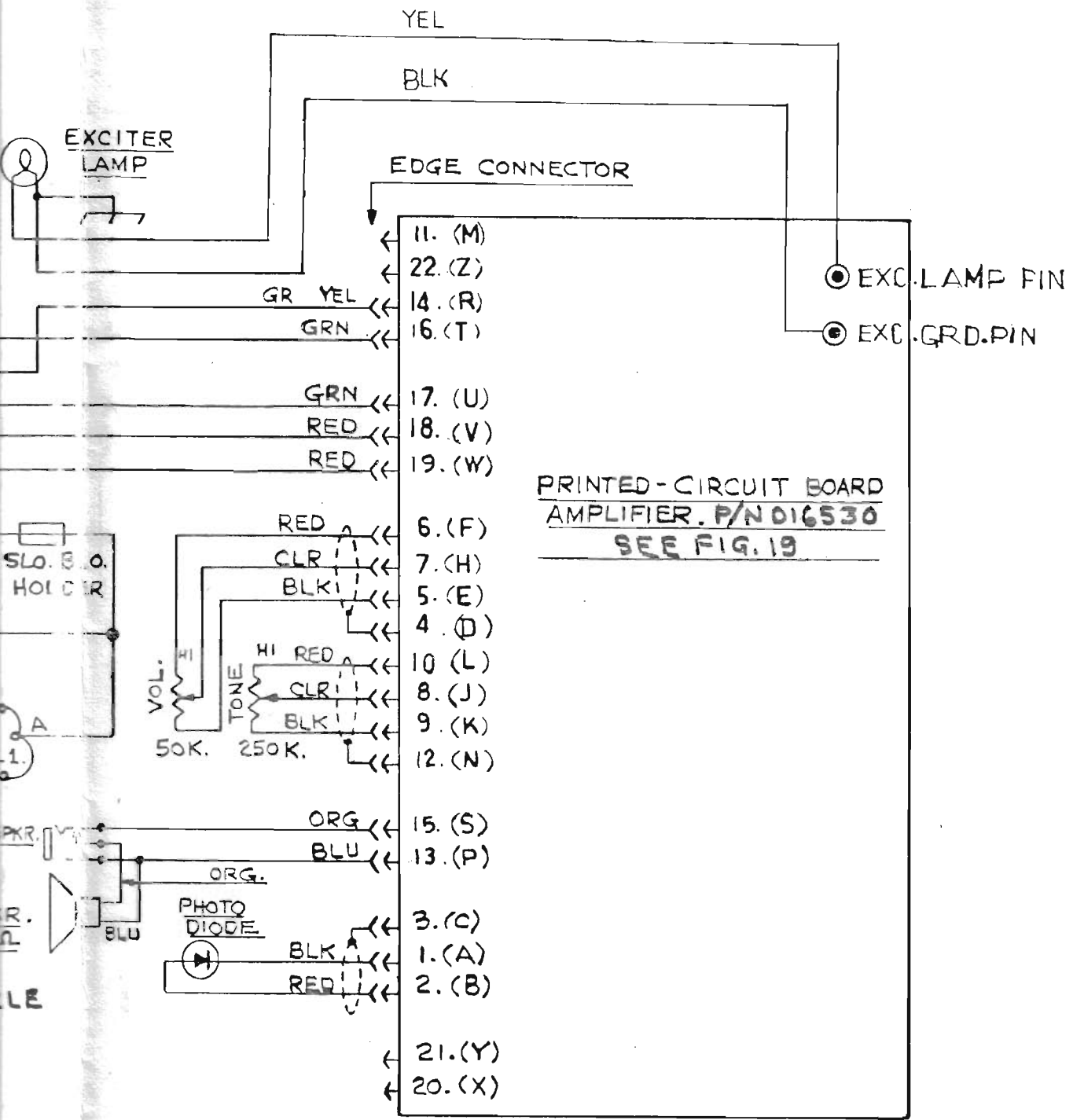
Figure 18. Projector Pictorial Diagram
 (Model 1529 C-Series)



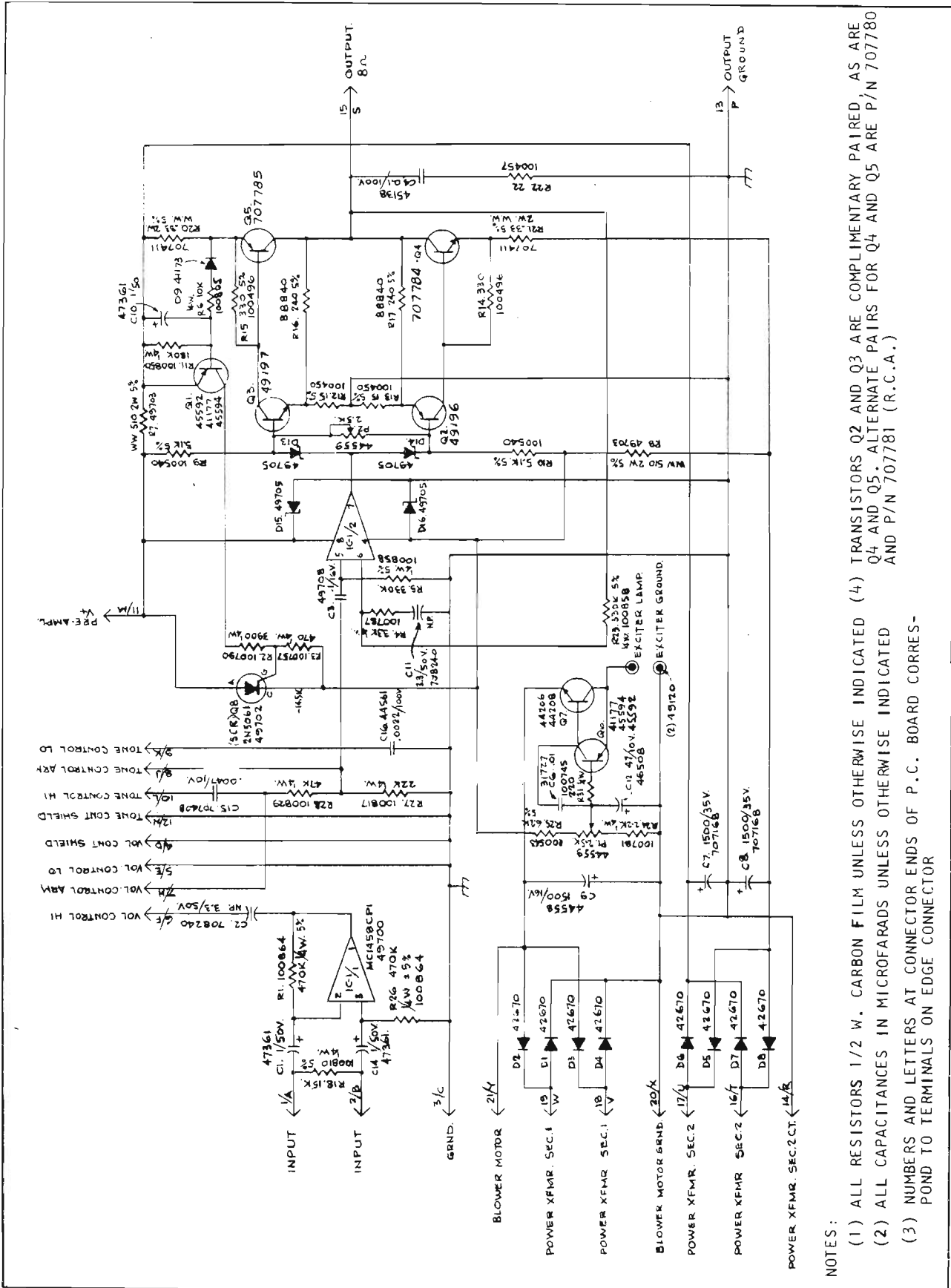
NOTES:

- A - INPUT VOLTAGE:
1592C/CS - 120V, 60Hz
1592CH/CHS - 120V, 50/60Hz
- B - CAPACITOR:
1592C/CS - 0.01 MFD
1592CH/CHS - 0.05 MFD
- C - CAPACITOR:
1592C/CS - 7.5 MFD
1592CH/CHS - 10 MFD
- D - LAMP TRANSFORMER:
1592C/CS - P/N 016579
1592CH/CHS - P/N 016625

SCHMATIC - I

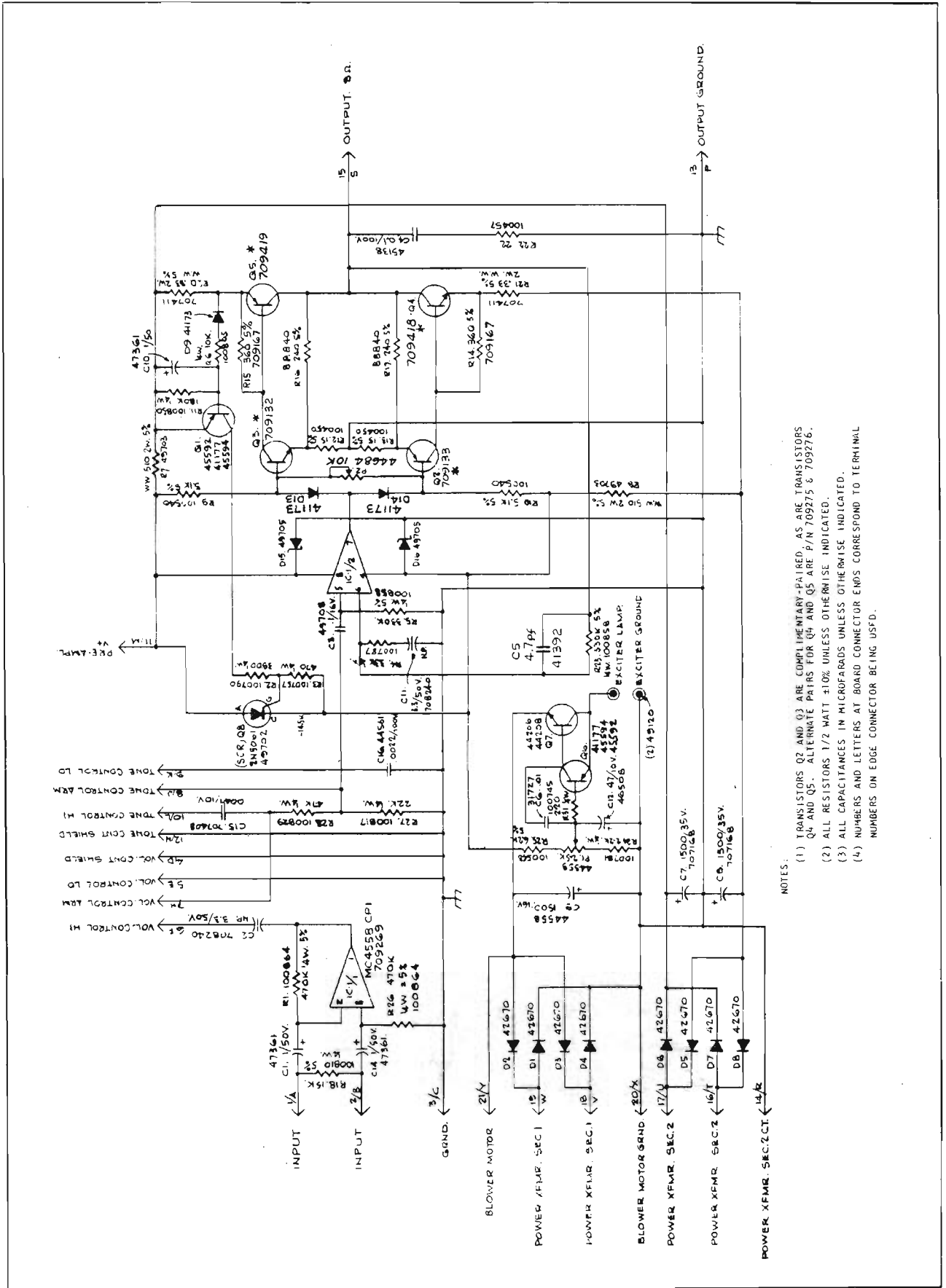


TIC - 1592 C/CS/CH/CHS



NOTES:
 (1) ALL RESISTORS 1/2 W. CARBON FILM UNLESS OTHERWISE INDICATED (4) TRANSISTORS Q2 AND Q3 ARE COMPLEMENTARY PAIRED, AS ARE Q4 AND Q5. ALTERNATE PAIRS FOR Q4 AND Q5 ARE P/N 707780 AND P/N 707781 (R.C.A.)
 (2) ALL CAPACITANCES IN MICROFARADS UNLESS OTHERWISE INDICATED
 (3) NUMBERS AND LETTERS AT CONNECTOR ENDS OF P.C. BOARD CORRESPOND TO TERMINALS ON EDGE CONNECTOR

Figure 19. Schematic Diagram for Amplifier P/N 016530



- NOTES:
- (1) TRANSISTORS Q2 AND Q3 ARE COMPLEMENTARY-PAIRED, AS ARE TRANSISTORS Q4 AND Q5. ALTERNATE PAIRS FOR Q4 AND Q5 ARE P/N 709275 & 709276.
 - (2) ALL RESISTORS 1/2 WATT ±10% UNLESS OTHERWISE INDICATED.
 - (3) ALL CAPACITANCES IN MICROFARADS UNLESS OTHERWISE INDICATED.
 - (4) NUMBERS AND LETTERS AT BOARD CONNECTOR ENDS CORRESPOND TO TERMINAL NUMBERS ON EDGE CONNECTOR BEING USED.

Figure 19A. Schematic Diagram for Amplifier P/N 077195

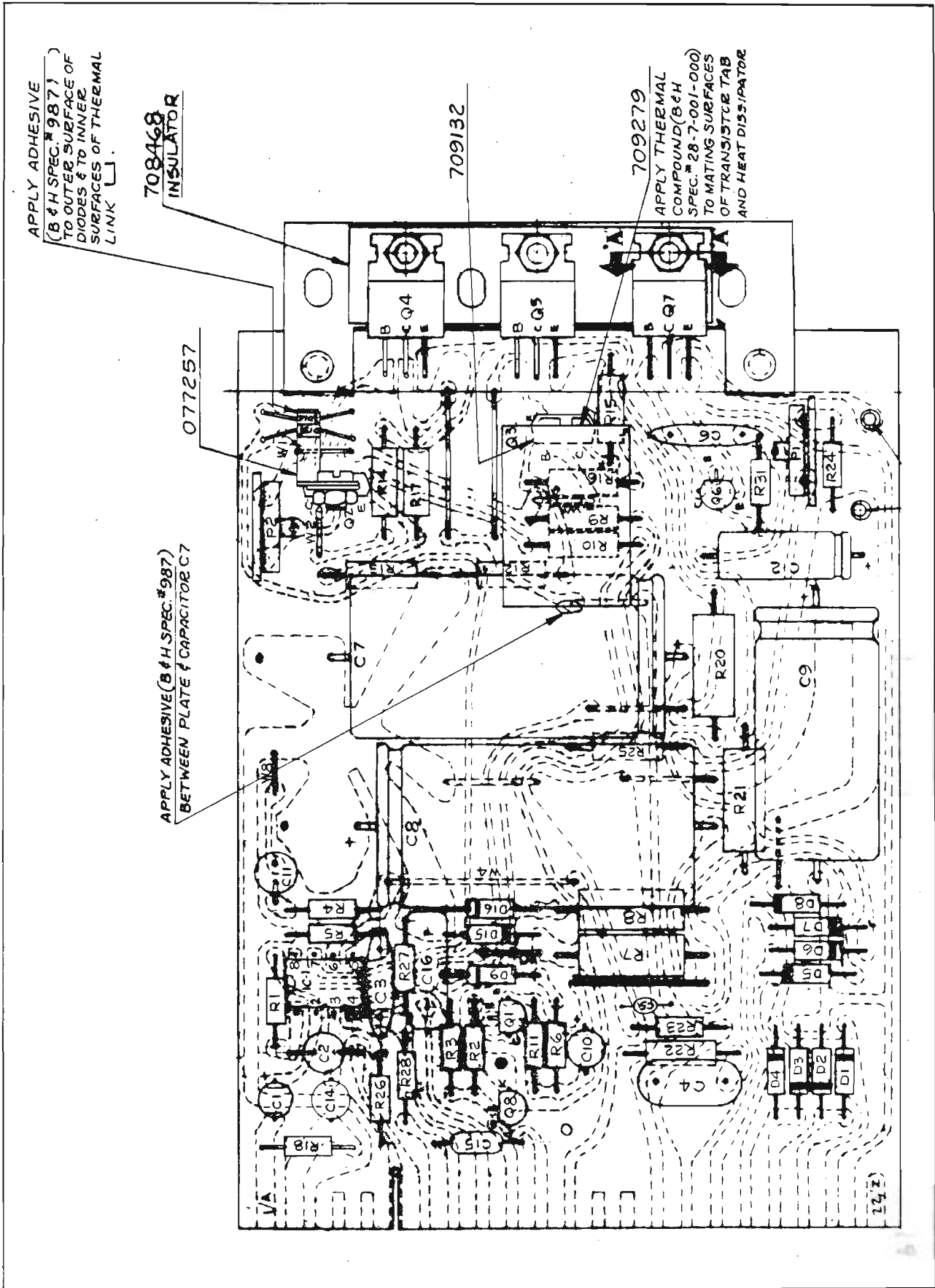


Figure 19B. Pictorial Diagram for Amplifier P/N 077195

FILMOSOUND® PROJECTORS
 MODELS 1585, 1590, 1592

PART NO.	FIG. & INDEX NO.	PART NO.	FIG. & INDEX NO.	PART NO.	FIG. & INDEX NO.	PART NO.	FIG. & INDEX NO.
31638	9-16	36042	13-27	44224	10-25	44511	9-28
31659	9-15F	36044	11-51	44226	2-7B	44512	4-34
31669	9-22	36047	11-54E	44261	12-2	44513	11-44
31671	9-13	36048	12-25	44294	5-24	44514	5-20
31673	9-12	36061	11-6, 11-11A	44297	5-27	44515	5-8
31674	9-15B	36064	14-2	44298	2-7D	44516	5-4
31675	9-30	36065	13-30	44299	10-35A	44526	5-23
31928	10-15	36075	14-9	44312	4-12, 4-19	44532	6-31
31953	1-13A	36078	14-4	44313	4-27	44533	6-43
31957	10-1, 10-2	36081	10-29	44317	4-13	44535	6-8, 10-37
31976	13-4	36082	11-2	44321	10-32	44536	3-34A
31977	11-61, 13-6	36083	4-21, 4-25A	44325	12-36	44537	4-24
31978	14-1, 14-8	36094	9-6	44327	12-34	44544	10-40
32456	9-7A	36099	11-54D	44328	3-47B	44545	10-8
33285	3-45	36533	3-43, 5-2,	44329	12-4	44546	10-33
33300	12-3A		5-6	44332	3-10C, 3-14C	44586	3-41
33347	11-27, 11-55	36662	12-6	44333	3-10D, 3-14D	44587	2-7F
33385	7-16, 8-20	36667	12-29	44338	11-11B	44596	10-39
33837	9-26	36668	9-20, 12-19	44339	6-10B	44597	11-4A
34053	15-20	36763	3-42, 5-1,	44343	11-11E	45083	1-1C, 15-4
34101	8-15, 8-23		5-5, 11-42,	44348	5-28	45087	1-9J
34766	6-28		13-11	44356	3-30	45102	2-6A, 15-7
34787	9-5	36764	7-8, 8-13,	44359	11-9	45575	3-44
34797	12-10		8-26, 10-34	44361	11-8	45577	7-9
34822	6-42	36765	7-8A, 9-19	44364	6-9	45578	7-9A
34823	12-4B	36769	2-1, 7-5A,	44367	8-27	45579	7-10
34859	7-3		13-24A	44370	4-4, 4-11B	45580	8-11
34861	4-3	36770	12-1	44371	4-9	45581	4-8, 4-33
34874	8-3	36771	10-11	44372	4-23	45598	3-2
34878	10-26, 11-45,	36801	11-52	44373	4-25C	45675	3-2
	11-57	36999	10-28	44376	3-22	45676	3-6, 3-10B
34879	10-26	37293	14-6	44377	3-19	45682	8-2
34884	9-8	37295	14-5	44378	10-7	45683	8-16
34889	6-26	37296	14-3	44381	10-35	45684	8-12
34892	9-9	37302	11-46E	44388	10-16D	45685	8-14
34897	10-5E	37303	11-46B	44395	5-7	45687	10-5D
35066	11-11D	37304	11-46C	44407	7-20	45688	10-5A
35164	15-13	39092	4-7	44412	8-24	45692	2-7C
35814	10-27	39787	4-38	44417	10-23	45695	3-38
35819	10-5F	39789	9-15G	44420	9-27	46464	12-11
35820	11-34	41307	12-18	44422	12-26	46484	3-6, 3-10B
35822	11-16	41308	12-9	44424	5-12	46524	1-5A, 6-13,
35823	9-4	41309	12-9	44427	5-14	47137	4-10
35830	10-30	41317	13-7H	44429	5-15	47203	1-9D
35834	11-18	41318	13-7K	44430	5-19	47408	5-26
35837	12-28	41319	13-24B	44433	3-27	47431	2-12
35838	11-14	41320	9-31B	44437	6-10C	47974	2-3A, 6-21
35840	11-48	41321	9-31A	44440	6-7	48052	1-9B
35846	11-24	41323	3-28	44457	3-27	48053	2-6C
35850	11-19	41330	11-11C	44458	3-27	48055	1-7
35874	11-13	41342	11-36	44459	3-23	48058	1-2
35910	10-20	41377	12-35	44461	1-18	48063	1-9C
36013	12-14	42244	13-10	44462	6-32	48064	1-10
36014	12-15	42392	3-40	44467	3-35A, 3-36	48065	2-7G
36015	12-13	42453	4-39	44469	11-7	48066	2-7G
36018	11-26	43288	9-2	44488	12-2	48067	6-11
36027	11-54C	43878	2-9	44489	3-27	48069	6-16
36028	11-54F	44173	1-13F	44490	1-18	48070	6-38
36038	8-5	44205	13-17, 13-26	44492	3-3A	48071	6-39
36039	13-30	44223	2-12	44507	4-31	48072	6-44

PART NO.	FIG. & INDEX NO.	PART NO.	FIG. & INDEX NO.
48073	6-41	700816	15-3A
48074	6-25A	706678	15-25
48075	6-25B	707075	2-14
48076	6-25C	707077	1-14
48077	6-25D	707081	1-13C
48078	6-23	707110	4-18
48079	1-10	707111	7-14
48080	1-10	707112	4-17
48088	6-25E	707114	1-15
48089	6-25F	707115	1-15
48176	5-3	707116	2-16
48177	12-32	707117	10-5J
48191	1-5	707118	1-1A
48610	3-24	707136	8-18
48625	3-35C	707162	10-10
48630	4-41	707183	1-9F
48938	11-5	707195	1-4
48939	11-4	707211	12-21B
49094	15-10	707229	1-16
49275	1-6A	707231	1-16
49282	1-1E	707276	6-2
49283	1-1D	707412	15-2
49284	1-1F, 15-6	707414	15-15
49532	8-31	707416	15-18
49637	2-3, 2-4	707449	1-9A
49638	1-3, 1-8	707459	15-12
49696	7-2	707470	3-8A
49744	15-16	707716	2-11
49747	15-9	707745	3-8
49932	9-10	707746	3-7
49945	3-38	707747	2-6B
49979	11-10	707751	15-5
49980	11-38	707767	15-11
49982	1-13D	707769	15-23
49986	6-4	707770	15-24
49992	2-7H	708200	6-3
80408	3-20, 3-26	708214	6-45
82946	2-7E	708237	6-1
83663	11-33	708246	1-6
87129	1-19, 6-14	708470	3-27
88672	3-34B	708629	1-5
97509	11-3	708640	10-14A
99828	11-46A	709040	2-11A, 5-9
200508	12-4E	709107	3-31
300797	6-33	709215	6-5
303541	11-25	709218	2-5
308638	3-32	765449	5-16, 6-10A, 8-10, 10-22
434684	15-21	765460	1-1B
436895	15-19	766395	6-15, 6-22, 6-24
437724	15-22	766220	1-6
600736	3-35B, 3-37	766693	1-16D
600970	3-14B		
600987	9-7B		
602339	9-31C		
603292	1-9E		
700103	3-47A		
700639	10-16B		
700672	7-13, 8-8, 8-29		
700710	5-17, 5-21		
700735	3-3		