

# Film-Tech

The information contained in this Adobe Acrobat pdf file is provided at your own risk and good judgment.

These manuals are designed to facilitate the exchange of information related to cinema projection and film handling, with no warranties nor obligations from the authors, for qualified field service engineers.

If you are not a qualified technician, please make no adjustments to anything you may read about in these Adobe manual downloads.

[www.film-tech.com](http://www.film-tech.com)

# CHRISTIE INCORPORATED

## INSTRUCTIONS

FOR

**INSTALLATION, OPERATION, AND MAINTENANCE**

OF

**AUTOWIND-3R FILM HANDLING SYSTEM**

(P/N: 193932-001)

WITH

**MK/MKE MAKE-UP TABLE**

(AFTER SERIAL NUMBER 4720)

**AND ALL WITH RETROFIT KIT P/N: 193439-001**

CHRISTIE INCORPORATED  
10550 Camden Drive  
Cypress, CA 90630  
714-236-8610 Fax: 714-229-3185

**Operator's Manual  
AUTOWIND-3R Film Handling System  
TD549**

The information in this document is subject to change without notice and does not represent a commitment on the part of CHRISTIE, INCORPORATED (hereinafter referred to as CHRISTIE). CHRISTIE does not assume responsibility for errors that may appear in this document. CHRISTIE or its subsidiaries, designated representatives, and any other vendor of the Autowind-3R Film Handling System are not responsible in any way for any liabilities or loss resulting from the use or misuse of this document.

Copyright © 1998 by CHRISTIE, INCORPORATED  
All Rights Reserved

All copyrights and trademarks are the property of their respective owners.

**CHRISTIE**  
INCORPORATED  
10550 Camden Drive  
Cypress, CA 90630  
Telephone 714-236-8610  
FAX 714-229-3815

---

---

# TABLE OF CONTENTS

---

<b>TABLE OF CONTENTS</b> .....	<b>i</b>
<b>LIST OF FIGURES AND TABLES</b> .....	<b>iii</b>
<b>1. INTRODUCTION</b> .....	<b>1-1</b>
1.1. Contents of the Manual.....	1-1
1.2. Who Should Use This Manual? .....	1-1
1.3. Special Notices.....	1-1
1.3.1. Warning .....	1-2
1.3.2. Caution.....	1-2
1.3.3. Note .....	1-2
<b>2. GENERAL DESCRIPTION</b> .....	<b>2-1</b>
2.1. Unpacking.....	2-1
2.2. Problem Resolution .....	2-2
2.2.1. Contacting Christie.....	2-2
2.2.2. Ordering Replacement Parts .....	2-2
<b>3. INSTALLATION PROCEDURES</b> .....	<b>3-1</b>
3.1. Autowind Assembly Instructions.....	3-1
3.1.1. Main Column.....	3-1
3.1.2. Drive Motors.....	3-1
3.1.3. Platters .....	3-6
3.1.4. Feed Control Plate.....	3-6
3.1.5. Return Arms .....	3-6
3.1.6. Column Rollers .....	3-6
3.1.7. Slide Bar and Roller Cluster Assembly .....	3-6
3.2. Make-Up Table Assembly .....	3-7
<b>4. PRINCIPLES OF OPERATION</b> .....	<b>4-1</b>
<b>5. ALIGNMENT AND CHECKOUT PROCEDURES</b> .....	<b>5-1</b>
5.1. Plugs.....	5-1
5.2. Autowind Controls .....	5-1
5.3. Make-Up Table Controls .....	5-3
5.4. Verifying Load Spindle/Load Platter Operation .....	5-3
5.5. Post-Installation Checkout Procedures.....	5-4

**6. OPERATING THE AUTOWIND .....6-1**

---

6.1. Loading and Unloading Film ..... 6-1  
6.1.1. Loading Film Onto the Autowind ..... 6-1  
6.1.2. Loading New Shows ..... 6-2  
6.1.3. Unloading Film from the Autowind ..... 6-2  
6.2. Film Threading Procedure ..... 6-3  
6.3. Autowind System Operation ..... 6-4  
6.3.1. Optimizing Operations ..... 6-4  
6.3.2. Running the System ..... 6-4

**7. MAINTENANCE AND ADJUSTMENTS .....7-1**

---

7.1. Preventive Maintenance ..... 7-1  
7.1.1. Drive Motors ..... 7-1  
7.1.2. Platters ..... 7-2  
7.1.3. Rollers ..... 7-2  
7.1.4. Spare Parts ..... 7-2  
7.1.5. Film Guide Shield ..... 7-2  
7.1.6. Removing and Installing Film Guide Shield ..... 7-2  
7.1.7. Static Electricity ..... 7-3  
7.2. Motor Speed Control Adjustments ..... 7-3  
7.3. Make-Up Table Adjustment ..... 7-5

**8. TROUBLESHOOTING .....8-1**

---

8.1. Autowind Platter ..... 8-2  
8.1.1. MALFUNCTION: Platter Does Not Run ..... 8-2  
8.1.2. MALFUNCTION: Platter Runs Too Slow ..... 8-3  
8.1.3. MALFUNCTION: Platter Runs Too Fast ..... 8-4  
8.1.4. MALFUNCTION: Platter Runs All the Time ..... 8-4  
8.1.5. MALFUNCTION: Platter Creeps ..... 8-5  
8.2. Return Arm ..... 8-5  
8.3. Make-Up Table ..... 8-6  
8.4. Film Breakage ..... 8-6

**APPENDIX A: ASSEMBLY DIAGRAMS AND PARTS LISTS .....A-1**

---

A.1: Autowind-3R Film Handling System ..... A-2  
A.2: Axle Assembly ..... A-6  
A.3: Door Panel and Control Modules ..... A-8  
A.4: MK/MKE Make-Up Table Assembly ..... A-10  
A.5: Platter Feed Control Assembly ..... A-14  
A.6: Platter Support Arm ..... A-16

**INDEX .....I-1**

---

---

## LIST OF FIGURES AND TABLES

---

Figure 3-1:	<a href="#">Autowind AW-3R Final Assembly Diagram</a>	3-2
Figure 3-2:	<a href="#">Platter Arm Assembly Diagram</a>	3-4
Figure 3-3:	<a href="#">Platter Feed Control Assembly Diagram</a>	3-8
Figure 3-4:	<a href="#">Make-Up Table Assembly Diagram</a>	3-10
Figure 4-1:	<a href="#">Door Panel and Control Modules Assembly Diagram</a>	4-2
Figure 5-1:	<a href="#">Make-Up Table and Film Track to Autowind</a>	5-2
Table 8-1:	<a href="#">Troubleshooting for Platter Refuses to Run</a>	8-2
Table 8-2:	<a href="#">Troubleshooting for Autowind Platter Too Slow</a>	8-3
Table 8-3:	<a href="#">Troubleshooting for Autowind Platter Too Fast</a>	8-4
Table 8-4:	<a href="#">Troubleshooting for Platter Runs Constantly</a>	8-4
Table 8-5:	<a href="#">Troubleshooting for Platter Creeps</a>	8-5
Table 8-6:	<a href="#">Troubleshooting for Return Arm Not Taking Up Film Slack</a>	8-5
Table 8-7:	<a href="#">Troubleshooting for Make-Up Table</a>	8-6
Table 8-8:	<a href="#">Troubleshooting for Excessive Film Breakage</a>	8-6
Figure A-1:	<a href="#">Autowind-3R Film Handling System</a>	A-2
Table A-1:	<a href="#">Parts List for Autowind-3R Film Handling System</a>	A-3
Figure A-2:	<a href="#">Axle Assembly Diagram</a>	A-6
Table A-2:	<a href="#">Parts List for Autowind 3R Axle Assembly</a>	A-7
Figure A-3:	<a href="#">Door Panel and Control Modules Diagram</a>	A-8
Table A-3:	<a href="#">Parts List for Door Panel and Control Modules</a>	A-9
Figure A-4:	<a href="#">MK/MKE Make-Up Table</a>	A-10
Table A-4:	<a href="#">Parts List for MK/MKE Make-Up Table</a>	A-11
Figure A-5:	<a href="#">Platter Feed Control Assembly</a>	A-14
Table A-5:	<a href="#">Parts List for Platter Feed Control Assembly</a>	A-15
Figure A-6:	<a href="#">Platter Support Arm</a>	A-16
Table A-6:	<a href="#">Parts List for Platter Support Arm</a>	A-17

## 1. INTRODUCTION

---

### 1.1. CONTENTS OF THE MANUAL

---

This manual contains installation, operation, and operator maintenance procedures for CHRISTIE Autowind-3R Film Handling System with MK/MKE Make-Up Table. The manual is applicable to all systems with serial number greater than serial number 4720, and to all systems with Retrofit Kit 193439-001 installed. The material covered includes:

- general description
- installation procedures
- principles of operation
- alignment and checkout procedures
- operating the Autowind
- maintenance and adjustments
- troubleshooting.

### 1.2. WHO SHOULD USE THIS MANUAL?

---

This manual provides information suitable for various purposes. For details on operating the projector and for general information, see:

- *Section 2: General Description*
- *Section 3: Installation and Assembly*
- *Section 4: Alignment and Checkout Procedures*
- *Section 5: Operating the Autowind.*

Before performing adjustments and periodic maintenance during normal operation, see:

- *Section 6: Periodic Maintenance*
- *Section 7: Calibration, Alignment, and Adjustments.*

If a problem occurs, see:

- *Section 8: Troubleshooting.*

Additional reference information is contained in the appendix.

### 1.3. SPECIAL NOTICES

---

Three kinds of specific notices are used within this manual to emphasize specific information.

**1.3.1. WARNING**

---



**WARNING:** Indicates the presence of a hazard that can cause personal injury if the hazard is not avoided.

**WARNING**

**1.3.2. CAUTION**

---



**CAUTION:** Indicates the presence of a hazard that could cause damage to projection system.

**1.3.3. NOTE**

---



**NOTE:** Provides additional information.



## 2. GENERAL DESCRIPTION

---

The Autowind-3R film handling system is a reliable, easy-to-operate film handling system. The Autowind automatically rewinds film as it is projected, eliminating the need for manual rewinding. This system accommodates up to 25,000 feet of continuous 35-mm film on each of two platters, providing approximately 4½ hours of uninterrupted operation from each platter.

The Autowind-3R system contains three individually controlled horizontal platters. Film feeds from one platter through the projector and back onto another platter, where it automatically rewinds as the show is in progress. Each platter is driven by its own torque motor. Each torque motor is controlled by a solid-state, plug-in speed-control card. These cards are located in the hinged door of the control panel for easy access and adjustment.

The Autowind system contains a make-up table. Film feeds to the make-up table from conventional 2000/6000-foot reels onto the Autowind. Film segments are spliced together to make one continuous program. The make-up table can also unload film from the Autowind back onto the original reels for shipping. Controls for loading or unloading the Autowind are on the make-up table.

Once a show has been loaded, the Autowind system operates automatically.



The Autowind-3R system requires 115-V single-phase 60-Hz power (a model for use with 230-V single-phase 50-Hz power is also available). Christie recommends that a separate circuit be provided for each Autowind.

### 2.1. UNPACKING

---

The Autowind is normally shipped, uncrated, by van lines within the United States. This method ensures expert handling during transit and delivery to the projection booth. For shipment by truck or airline, or for export, the system is crated.

When the Autowind-3R Film Handling System is received:

1. Consult bill of lading or shipping documents to verify that correct number of pieces has been received.
2. Thoroughly inspect each item for damage that might have occurred during shipment. Any damage discovered should be reported immediately to transport company for inspection and filing of claim.

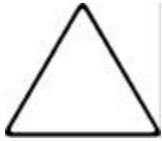


Do not accept a shipment until all equipment has been completely inspected!

---

## **2.2. PROBLEM RESOLUTION**

---



On rare occasions, an Autowind system installation, operation, or maintenance problem that is not addressed in this manual may occur. If this happens, contact Christie Incorporated directly.

---

### **2.2.1. CONTACTING CHRISTIE**

---

To order parts or request information from Christie, use the address, telephone number, or Fax number given on the inside front page of this document. Include:

- Autowind model and serial number
- part name and part number, as shown in this manual
- purchase order number.

The purchase order number is essential for replacement parts requested under warranty. Christie issues credit for defective parts received. Please request return authorization number from Christie for defective parts.

---

### **2.2.2. ORDERING REPLACEMENT PARTS**

---

When ordering replacement parts, contact your dealer directly.

## 3. INSTALLATION PROCEDURES

---



Operators are urged to read this instruction manual thoroughly and understand the procedures described herein before assembling and installing the Autowind system.

The Autowind should be assembled and leveled in the area where it is to be operated, near the projector. The Autowind can be installed on either side of the projector.

If space in the projection booth is limited, the Autowind can be installed in an adjoining room. However, additional film transport roller assemblies should be installed to transmit the film from the Autowind to the projector and back when the distance between the Autowind and the projector is greater than 10 feet. Film transport roller assemblies (P/N 700108-001) must be ordered separately.

### 3.1. AUTOWIND ASSEMBLY INSTRUCTIONS

---

#### 3.1.1. MAIN COLUMN

---

1. Attach main column (item 1 in Figure 3-1) to base (item 20 in Figure 3-1), using four  $\frac{3}{8}$  x 1.0-inch hex head cap screws, lock washers, and flat washers. Tighten securely.
2. Using carpenter's level, verify that platter disks are level. Adjust leveling feet (item 29 in Figure 3-1) if necessary.

#### 3.1.2. DRIVE MOTORS

---

There are three drive motors.

1. Place spring (item 3 in Figure 3-2) in spring housing (item 4 in Figure 3-2).
2. Push motor assembly (item 20 in Figure 3-2) toward support arm, depressing motor tension spring.
3. Verify that two flanged bushings (items 5 in Figure 3-2) are in place.
4. Align holes in motor mounting bracket with holes in platters support arm. Use long-nosed pliers or any other tapered instrument to align holes.
5. Insert motor assembly mounting bolt (item 6 in Figure 3-2) upward through holes until mounting bolt protrudes through top of assembly. Insert locking pin (item 7 in Figure 3-2).
6. Repeat steps 1 - 5 for remaining two drive motors.

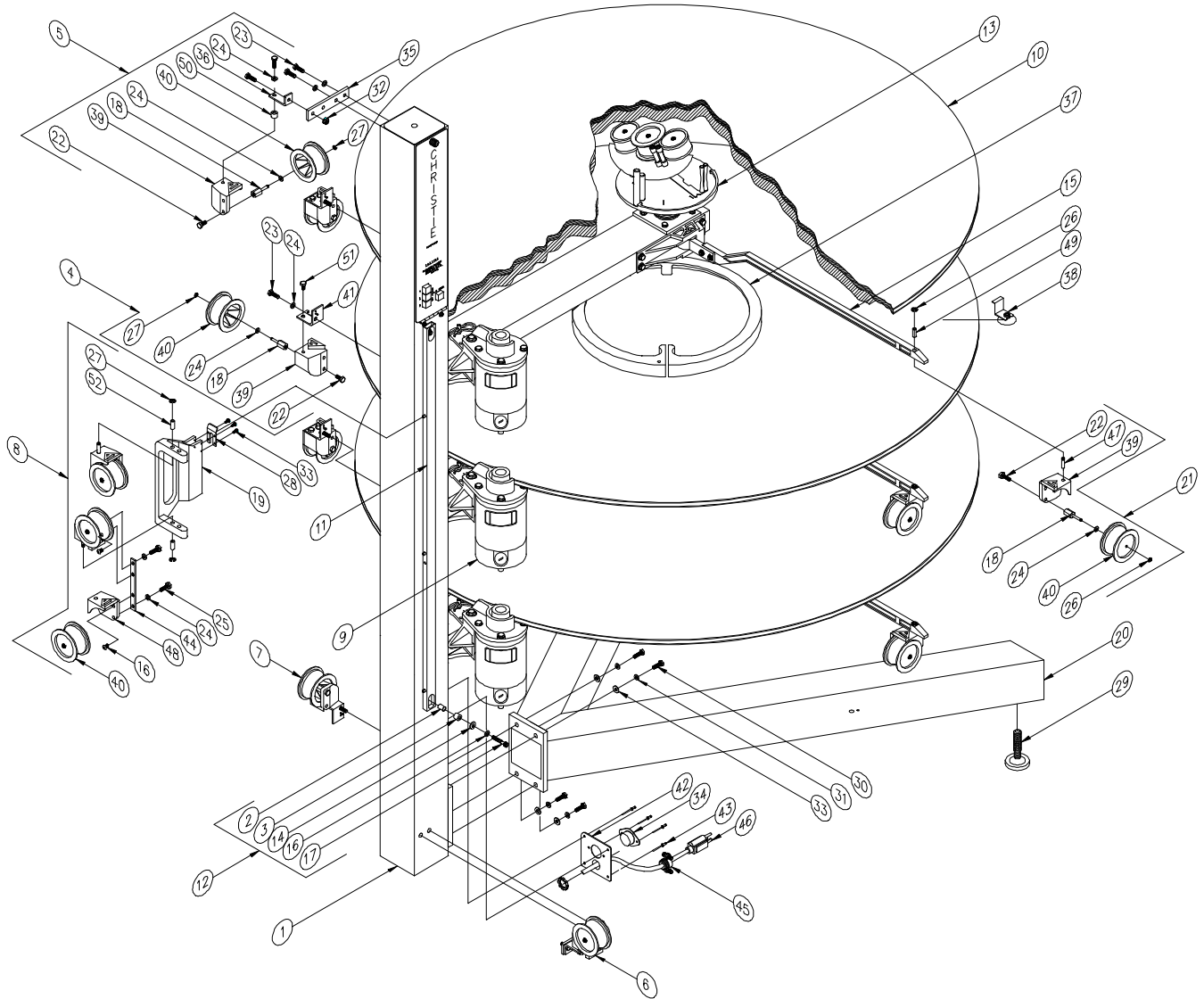


Figure 3-1: Autowind AW-3R Final Assembly Diagram

- |  |   |
|--|---|
| 1: Column Assembly (193671-001)                    | 27: Small E Ring (515700-107)               |
| 2: Nutsert (515200-047)                            | 28: Rest Plate (192887-001)                 |
| 3: Spacer (191414-002)                             | 29: Foot and Lock Nut Assembly (520650-003) |
| 4: Take-Up Roller Assembly (194502-001)            | 30: #3/8-16 x 1-in Hex Head Screw           |
| 5: Top Roller Assembly (192897-001)                | 31: #3/8 Lock Washer                        |
| 6: Bottom Roller Assembly (192876-001)             | 32: Chemical Adhesive Nutlock (509101-005)  |
| 7: Idler Roller Assembly (194502-001)              | 33: Phillips Pan Head Screw                 |
| 8: Cluster Roller Assembly (192877-001)            | 34: MK Table Connection Socket (524306-003) |
| 9: Platter Drive Assembly (192862-001))            | 35: Bracket (192875-002)                    |
| 10: Platter Assembly (192899-001)                  | 36: Roller Bracket (192816-002)             |
| 11: Slide Bar Assembly (193032-001)                | 37: Take-Up Ring Assembly (115713-001)      |
| 12: Slide Bar Spacer (191414-004)                  | 38: Anti-Skid Assembly (114863-002)         |
| 13: Feed Control Plate Assembly (196050-001)       | 39: Lefthanded Swivel Bracket (194201-003)  |
| 14: Flat Washer                                    | 40: Roller (194158-001)                     |
| 15: Return Arm Assembly (192835-001)               | 41: Roller Mounting Bracket (194501-001)    |
| 16: Socket Cap Screw                               | 42: Connector Plate (193553-001)            |
| 17: #1/4-20 Hex Head Screw                         | 43: Aluminum Pop Rivet (515310-009)         |
| 18: Shaft Assembly (196213-001)                    | 44: Bracket Cluster (194544-001)            |
| 19: Roller Cluster Slide Bracket (192886-001)      | 45: Strain Relief with Nut (515900-029)     |
| 20: Base Assembly (193564-001)                     | 46: AC Power Cord (526030-012)              |
| 21: Return Arm Assembly Swivel Roller (192879-001) | 47: Swivel Shaft (192813-001)               |
| 22: #1/4-20 x 1/2-in Hex Head Screw                | 48: Righthanded Swivel Bracket (194201-004) |
| 23: #1/4-20 x 1-in Hex Head Screw                  | 49: Pivot Bracket (192844-001)              |
| 24: #1/4 Lock Washer                               | 50: Bracket Spacer (191414-004)             |
| 25: #1/4-20 x 7/8-in Hex Head Screw                | 51: Bolt (515500-502)                       |
| 26: Large E-Ring (515700-061)                      | 52: Sleeve Bearing (515000-173)             |

**Callouts for Figure 3-1: Autowind AW-3R Final Assembly Diagram**

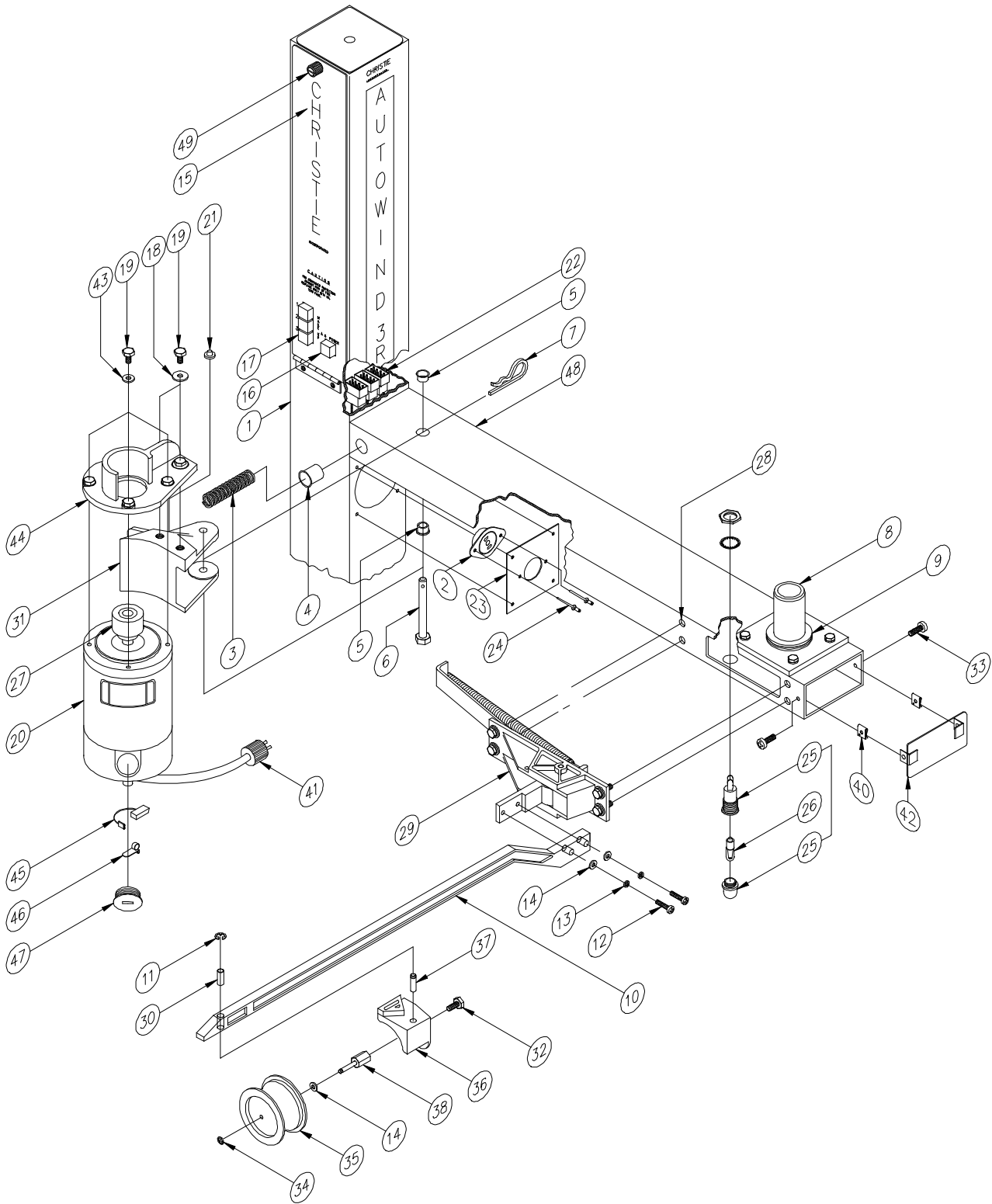


Figure 3-2: Platter Feed Control Assembly Diagram

- 1: Column Assembly (193671-001)
- 2: Female Receptacle (524303-001)
- 3: Motor Tension Spring (515610-025)
- 4: Spring Housing (192477-001)
- 5: Flanged Bushing (515000-174)
- 6: Motor Assembly Mounting Bolt (115419-001)
- 7: Cotter Pin (515000-117)
- 8: Platter Axle (196051-001)
- 9: Thrust Bearing Assembly (515000-157 to -159)
- 10: Return Arm Assembly (192835-001)
- 11: Large E-Ring (515700-061)
- 12: Pan Head Screw
- 13: Lock Washer
- 14: #10 Flat Washer
- 15: Control Module Assembly (194911-001)
- 16: ON/OFF Switch (578000-042)
- 17: Make-Up Mode Select Switch (192994-001)
- 18: Washer
- 19: Bolt
- 20: Motor with Plug (192890-001)
- 21: Rubber Bumper (518800-008)
- 22: AW3 Column Harness (192880-080)
- 23: Socket Plate (193552-001)
- 24: Pop Rivet (515310-009)
- 25: Indicator (546700-037)
- 26: Bulb (546536-001)
- 27: Drive Wheel (192826-001)
- 28: Nutsert (515200-047)
- 29: Return Arm Mechanical Housing (194373-001)
- 30: Sleeve Bearing (515000-173)
- 31: Pivot Bracket (192844-001)
- 32: Hex Screw
- 33: Sheet Metal Screw
- 34: Small E-Ring (515700-107)
- 35: Roller (194158-001)
- 36: Swivel Bracket (194201-003)
- 37: Swivel Shaft (192813-001)
- 38: Shaft Assembly (196213-001)
- 39: Captive Screw
- 40: Speed Nut Clip (515700-112)
- 41: Three-Prong Plug (524203-022)
- 42: End Cap (193665-001)
- 43: Lock Washer
- 44: Motor Support (192839-001)
- 45: Motor Brush (599000-089)
- 46: Motor Brush Spring (599000-091)
- 47: Cap
- 48: Platter Support Arm (193669-001)

**Callouts for Figure 3-3: Platter Feed Control Assembly Diagram**

### 3.1.3. PLATTERS

---

There are three platters.

1. Clean all dirt from platter axle (item 8 in [Figure 3-2](#)).
2. Apply thin film of Lubriplate to platter axle.
3. Install thrust bearing and thrust washers (item 9 in [Figure 3-2](#)) on axle.
4. Lubricate axle, bearing, and thrust washers with Lubriplate 130-AA.
5. Install platter: Place platter over axle and slightly depress motor tension spring (item 3 in [Figure 3-2](#)) until platter is seated on thrust washers.
6. Repeat steps 1 - 5 for remaining two platters.

### 3.1.4. FEED CONTROL PLATE

---

1. Remove dust plug from platter axle; save, and reinstall when platter deck is not in use.
2. Place feed-control plate into platter axle until oriented as shown in [Figure 3-3](#) (item 16). Keying system in both parts assists in orienting feed-control plate.
3. Ensure that notch on sensor-assembly arm is adjusted directly over 0° mark in REST POSITION. (See item 23 in [Figure 3-3](#)).

### 3.1.5. RETURN ARMS

---

Install three return arms (item 10 of [Figure 3-2](#)) as shown in [Figure 3-2](#) by securing two screws and washers (items 12, 13, and 14 of [Figure 3-2](#)).

### 3.1.6. COLUMN ROLLERS

---

There is a take-up roller (item 4 in [Figure 3-1](#)) for each platter. In addition, there is an adjustable roller (item 5 in [Figure 3-1](#)) at the top of the column for feed (*to* the projector), and an adjustable roller (item 6 in [Figure 3-1](#)) at the bottom for take-up (*from* the projector). Note that the orientation to these rollers can be adjusted depending on the relative positions of the Autowind and the projector. Refer to item 6 and the breakdowns of items 4 and 5 in [Figure 3-1](#) for the complete roller installation.

### 3.1.7. SLIDE BAR AND ROLLER CLUSTER ASSEMBLY

---

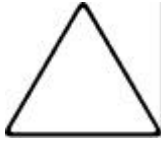
Mount the cluster roller assembly (item 19 in [Figure 3-1](#)) on the slide bar (item 11 in [Figure 3-1](#)) and install as shown. Use two hex head 1/4-20 x 1.5 in (3.81 cm) bolts, two spacers, two flat washers, and two lock washers.



---

## 3.2. MAKE-UP TABLE ASSEMBLY

---



The make-up table must be connected to the Autowind system only while loading and unloading film. The make-up table may be disconnected and moved at any other time.

1. Assemble table legs (see items 52 and 90 in [Figure 3-4](#)) to make-up table top. Use two  $\frac{3}{8}$ -16 x 1.75 in (3.91 cm) bolts, two lock washers, and two washers to attach each leg to inner side of appropriate side plate.
2. Assemble horizontal bars (see item 45 in [Figure 3-4](#)) between legs. Use two  $\frac{3}{8}$ -16 x 1.75 in (3.91 cm) bolts, two lock washers, and two washers to attach each horizontal bar to rear legs.
3. Refer to [Figure 3-4](#). Install roller post (item 43) onto make-up table horizontal bars using two each standoffs (see item 44), screws (see item 28), and wing nuts (see item 15), and four washers (see item 67).
4. Install snap-on swivel rollers onto post. (Refer to items E and H in [Figure 5-1](#)). Adjust top roller to height of selected platter.
5. With table standing in normal position, cut temporary restraining strap on drive motor and let motor hang free.
6. Lift motor. Install flat belt over both pulleys.
7. Release motor; motor is now supported by belt.
8. Ensure that motor pulleys are correctly aligned and belt runs true over crown of each pulley.

Run cable assembly from make-up table to vertical column of Autowind and insert six-pin plug into bottom receptacle of vertical column.

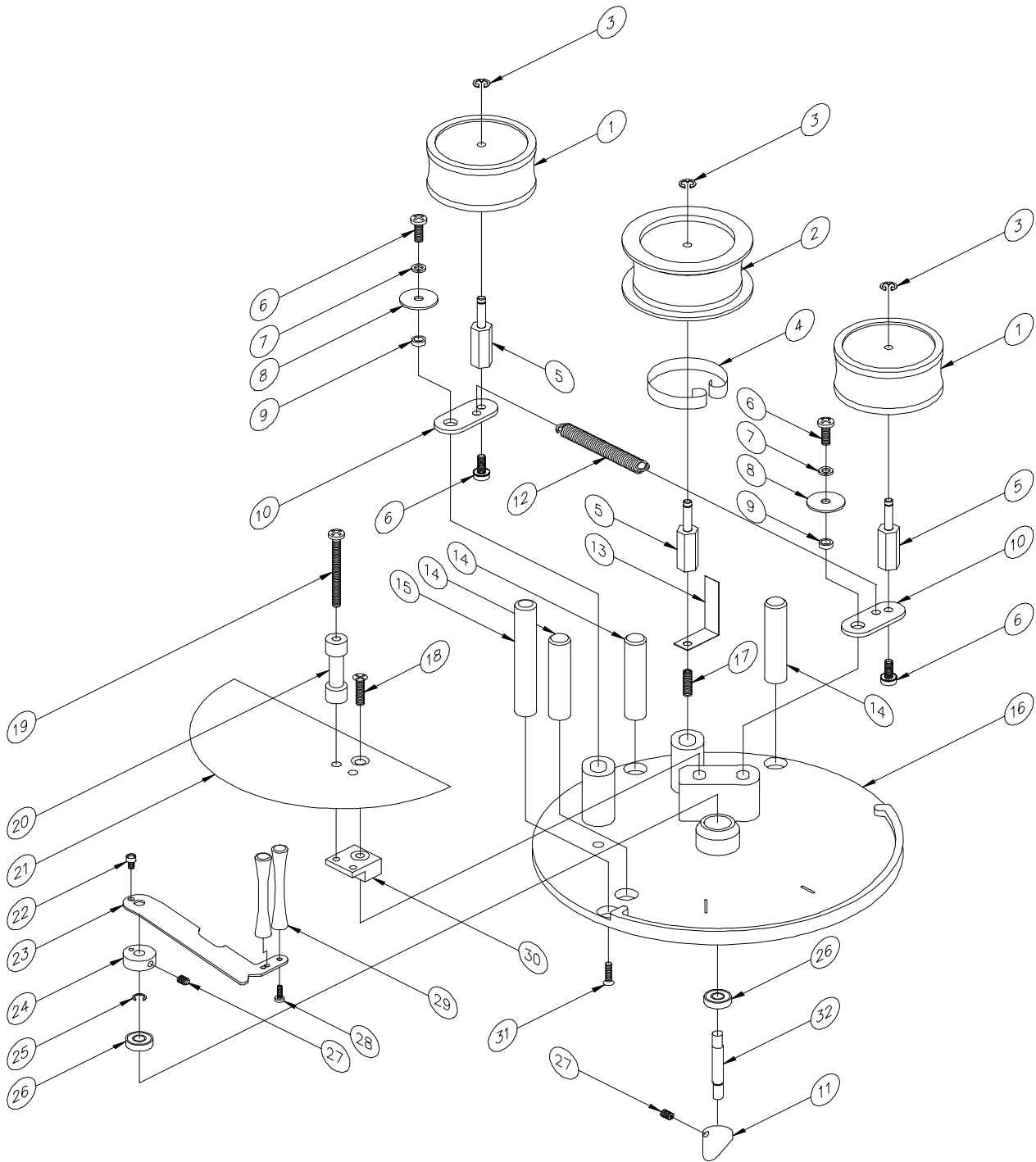


Figure 3-3: Platter Feed Control Assembly Diagram

- |  |                                      |
|--|--------------------------------------|
| 1: Side Tension Roller Assembly (194158-002)   | 17: 3/4-in Socket Screw (515500-080) |
| 2: Center Roller Assembly (194158-003)         | 18: Flat Head Screw                  |
| 3: Small E-Ring (515700-107)                   | 19: Round Head Slot Screw            |
| 4: Spring Stop (193033-001)                    | 20: Guide Bar (193421-002)           |
| 5: Roller Assembly Post and Shaft (192691-008) | 21: Shield (193423-001)              |
| 6: #10-32 Phillips Pan Head Screw              | 22: #6-32 Pan Head Screw             |
| 7: Split Lock Washer                           | 23: Arm (193508-001)                 |
| 8: Large Pattern Flat Steel Washer             | 24: Adapter (193880-001)             |
| 9: Bushing (192923-001)                        | 25: Crescent Ring (515700-110)       |
| 10: Link (192526-001)                          | 26: Ball Bearing (515000-193)        |
| 11: Arm Coupling (193884-001)                  | 27: 1/4-in Socket Screw (515500-077) |
| 12: Tension Spring (515610-026)                | 28: #4-40 Pan Head Screw             |
| 13: Spring Stop Bracket (193034-002)           | 29: Film Position Tip (192800-001)   |
| 14: Guide Pin (115221-001)                     | 30: Film Guide Bracket (193422-001)  |
| 15: Guide Post (192530-001)                    | 31: 100° Flat Head Screw             |
| 16: Feed Plate (194900-001)                    | 32: Arm Shaft (193881-001)           |

**Callouts for Figure 3-3: Platter Feed Control Assembly Diagram**

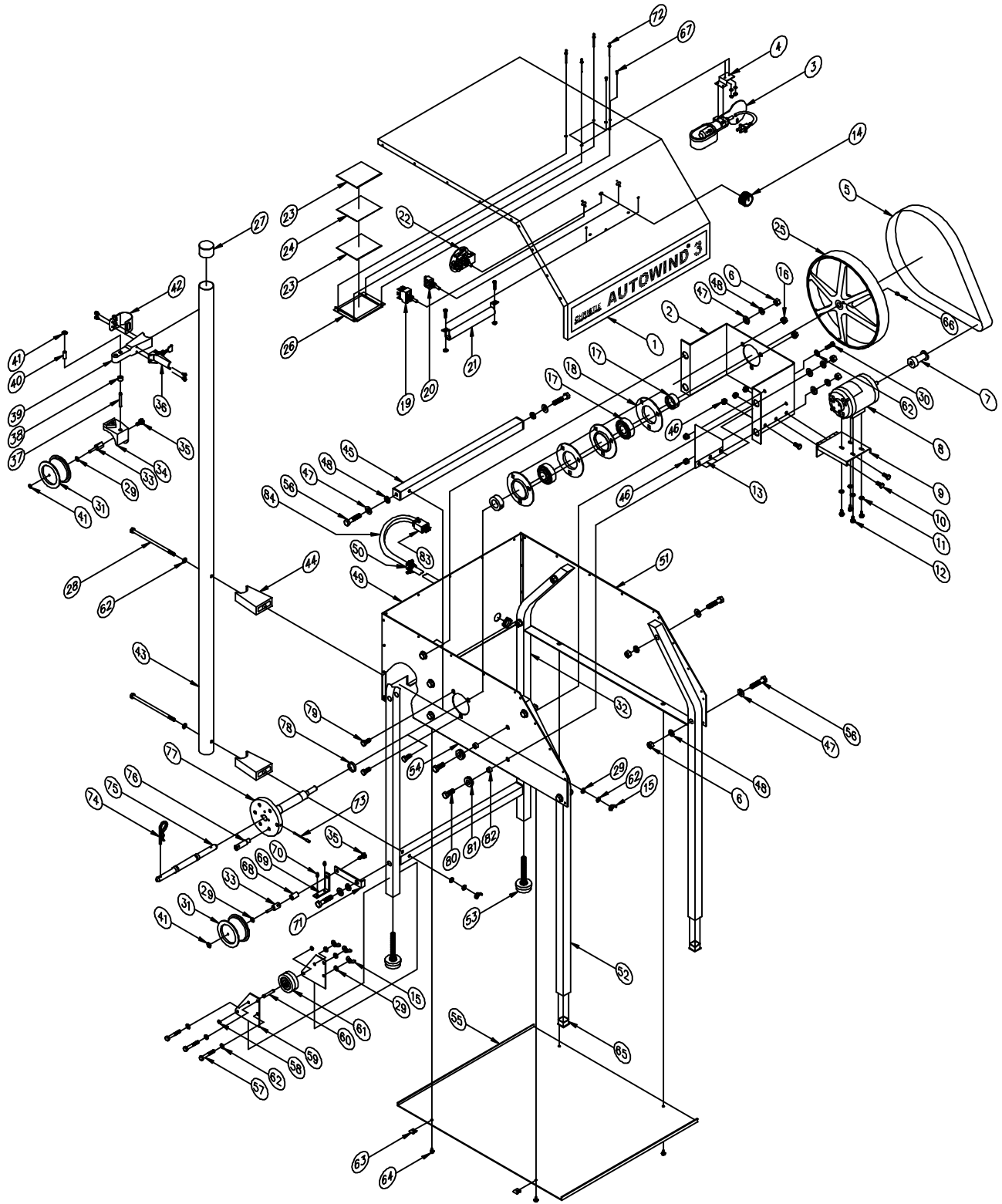


Figure 3-4: Make-Up Table Assembly Diagram

- |   |  |
|---|--|
| 1: Top Wrap (193071-001)                            | 43: Roller Post (192158-002)             |
| 2: Motor Bracket and Shaft (193062-001)             | 44: Stand-Off (192270-001)               |
| 3: Lamp (546650-002)                                | 45: Horizontal Bar Assembly (192155-001) |
| 4: Lamp Bracket (193117-001)                        | 46: #1/4-20 Hex Head Nut                 |
| 5: Drive Belt (515000-190)                          | 47: #3/8-16 Flat Washer                  |
| 6: #3/8-16 Hex Head Nut                             | 48: #3/8-16 Lock Washer                  |
| 7: Pulley (193055-001)                              | 49: Rear Panel (192164-001)              |
| 8: Motor and Lead Assembly (193060-001)             | 50: Strain Relief Connector (515900-029) |
| 9: Motor Pivot Bracket (193054-001)                 | 51: Righthand Side Plate (193082-002)    |
| 10: #1/4-20 x 7/8-in Hex Head Screw                 | 52: Front Leg (193084-001)               |
| 11: 10-32 Flat Washer                               | 53: Foot Leveler (515000-072)            |
| 12: #10-32 Phillips Pan Head Screw                  | 54: Lefthand Side Plate (193082-001)     |
| 13: Bracket (193097-001)                            | 55: Lower Panel (193089-001)             |
| 14: Control Knob (520570-058)                       | 56: #3/8-16 Hex Head Screw               |
| 15: Wing Nut  | 57: #1/4-20 x 1-3/4-in Hex Head Screw    |
| 16: #5/16-18 Hex Head Nut                           | 58: Large E-Ring (515700-061)            |
| 17: Bearing (515000-142)                            | 59: Wheel Assembly Bracket (192672-002)  |
| 18: Flangette (515000-144)                          | 60: Axle (192673-002)                    |
| 19: Spindle/Platter Toggle Switch (578712-012)      | 61: Wheel (520810-210)                   |
| 20: Brake/Switch Toggle Switch (578722-013)         | 62: #1/4-20 Flat Washer                  |
| 21: Resistor (555750-003)                           | 63: Speed Nut (515700-112)               |
| 22: MK3 Speed Control Assembly (193067-001)         | 64: #8-1/2 Phillips Pan Head Screw       |
| 23: Viewer Safety Window (191826-001)               | 65: Plastic Glide (515000-299)           |
| 24: Mylar Screen (192024-001)                       | 66: Set Screw                            |
| 25: Drive Wheel (192224-001)                        | 67: Screw with Washer                    |
| 26: View Screen Retainer (191823-001)               | 68: Spacer (192948-004)                  |
| 27: Electrical Connector Plug (515000-179)          | 69: Swivel Bracket (192815-002)          |
| 28: #1/4-20 x 6-in Hex Head Screw                   | 70: Film Guide (192804-001)              |
| 29: #1/4-20 Lock Washer                             | 71: Bottom Roller Bracket (193072-001)   |
| 30: #1/4-20 x 5/8-in Hex Head Screw                 | 72: Pop Rivet (515310-002)               |
| 31: High-Speed Flanged Roller Assembly (194209-001) | 73: Locking Screw (192167-002)           |
| 32: Rear Leg (193083-001)                           | 74: Cotter Pin (515000-117)              |
| 33: Shaft Assembly (196213-001)                     | 75: Reversible Shaft (192159-001)        |
| 34: Swivel Bracket (194201-003)                     | 76: Drive Pin (192160-001)               |
| 35: #1/4-20 x 1-3/8-in Hex Head Screw               | 77: Machined Shaft/Hub (192254-001)      |
| 36: Tension Latch (515700-103)                      | 78: Spacer (192168-002)                  |
| 37: Swivel Shaft (192813-001)                       | 79: #5/16-18 x 3/4-in Hex Head Screw     |
| 38: Roller Assembly Spacer (191414-006)             | 80: #3/8-16 x 1-in Hex Head Screw        |
| 39: Roller Support (192827-002)                     | 81: Grommet Clamp (518508-021)           |
| 40: Sleeve Bearing (515000-173)                     | 82: Bushing (192792-001)                 |
| 41: Small E-Ring (515700-107)                       | 83: Plug with Cable Clamp (524206-004)   |
| 42: Strap Clamp with Hinged Bracket (192175-001)    | 84: Cable Assembly (192945-002)          |

**Callouts for Figure 3-4: Make-Up Table Assembly Diagram**

## 4. PRINCIPLES OF OPERATION

---

A film-position sensor controls the speed of the platter that feeds film to the projector, and a return arm underneath the platter controls the speed of the platter that receives film from the projector. (See [Figure 3-3](#).) Each platter is independently driven by its own direct-current (DC) permanent magnet torque motor.

Each drive motor is controlled by its individual motor speed control card, located in the control assembly ([Figure 4-1](#)). This motor-control card operates in conjunction with a control sensor assembly (item 21 in [Figure 3-3](#)), located at the end of each platter support arm. The control sensor consists of a light-emitting diode (LED) light source with a photo-conductor mounted opposite the LED.

The LED maintains a constant preset intensity. A rotating variable-density filter, driven by either the film-position sensor or the return arm, operates between the LED and the photo-conductor. Increased light on the photo-conductor causes an increased current to flow to the motor speed-control card; in the same manner, decreased light causes a decrease in current.

The current is amplified and converted to DC for the drive motor. The control system provides precise and smooth control of the platter speeds without employing mechanical contacts that are subject to wear or pitting.

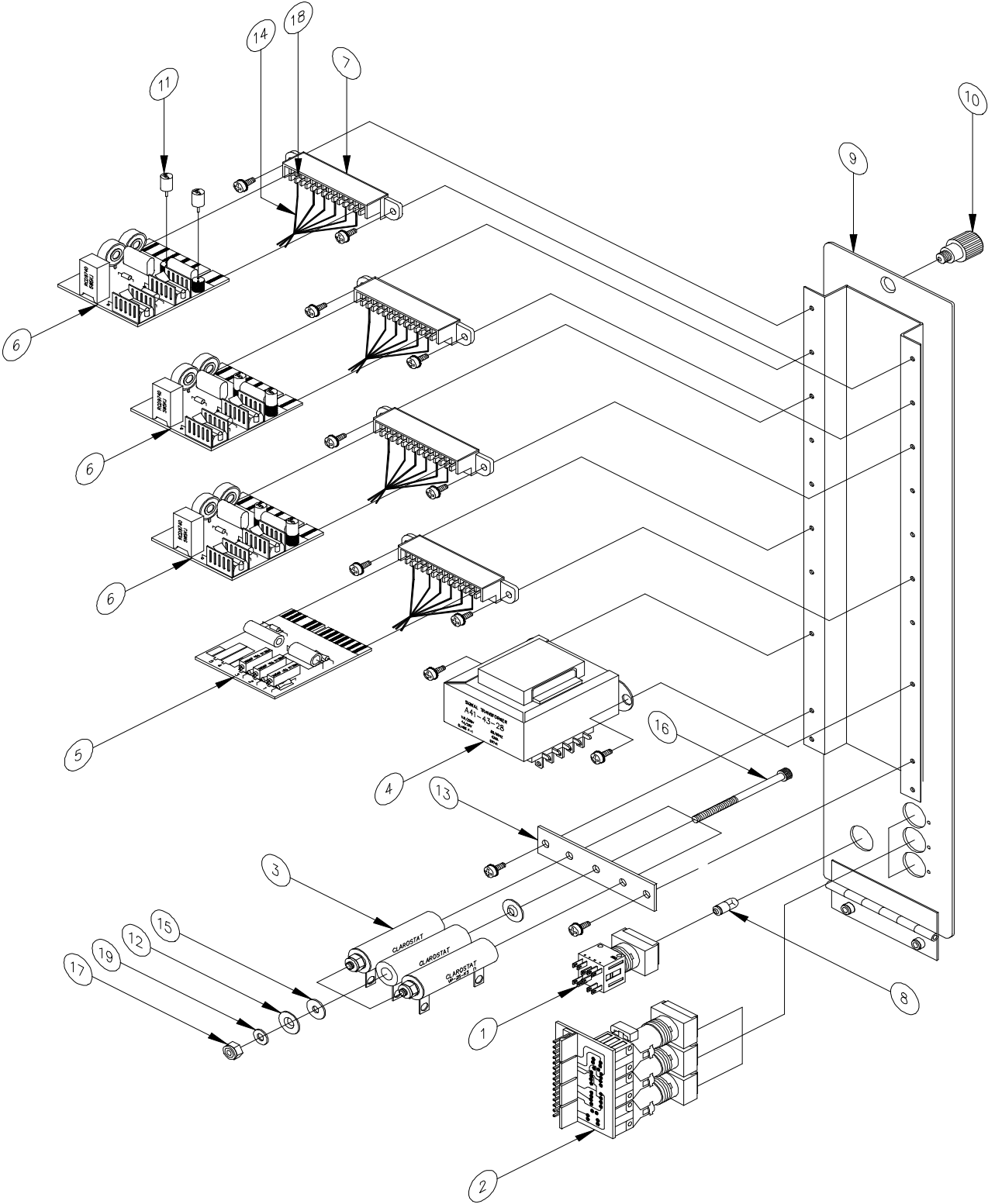


Figure 4-1: Door Panel and Control Modules Assembly Diagram

- |   |   |
|---|---|
| 1: OFF/ON Switch (578000-076)                                       | 10: Captive Screw (515700-117)                |
| 2: Make-Up/Brake-Down Mode (194871-001)<br>Selector Switch Assembly | 11: Fuse (546105-008)                         |
| 3: Resistor (555030-903)  | 12: Steel Washer (515810-404)                 |
| 4: Step-Down Transformer (194548-002)                               | 13: Resistor Mounting Bracket (192882-001)    |
| 5: LED Power Control Card (117509-001)                              | 14: Door Module Harness Assembly (192870-001) |
| 6: Motor Control Card (192883-001)                                  | 15: Silastic Washer (100425-001)              |
| 7: Socket (524715-005)  | 16: Socket Head                               |
| 8: OFF/ON Indicator Light Bulb (546536-002)                         | 17: Self-Locking Nut                          |
| 9: Panel Door Module (194911-001)                                   | 18: Push-In Connector Pin (524900-040)        |
|   | 19: Flat Washer                               |

**Callouts for Figure 4-1: Door Panel and Control Modules Assembly Diagram**



## 5. ALIGNMENT AND CHECKOUT PROCEDURES

---



These procedures are to be performed *without* film in the projection system.

### 5.1. PLUGS

---

1. Plug 115-V, 15-amp, AC plug from base of Autowind column (item 46 in Figure 3-1) into corresponding grounded wall outlet. (The Autowind-3R Film Handling System can be configured for other voltages; contact the dealer for more information.)
2. Insert six-pin plug from make-up table into receptacle on Autowind column (item 34 in Figure 3-1).



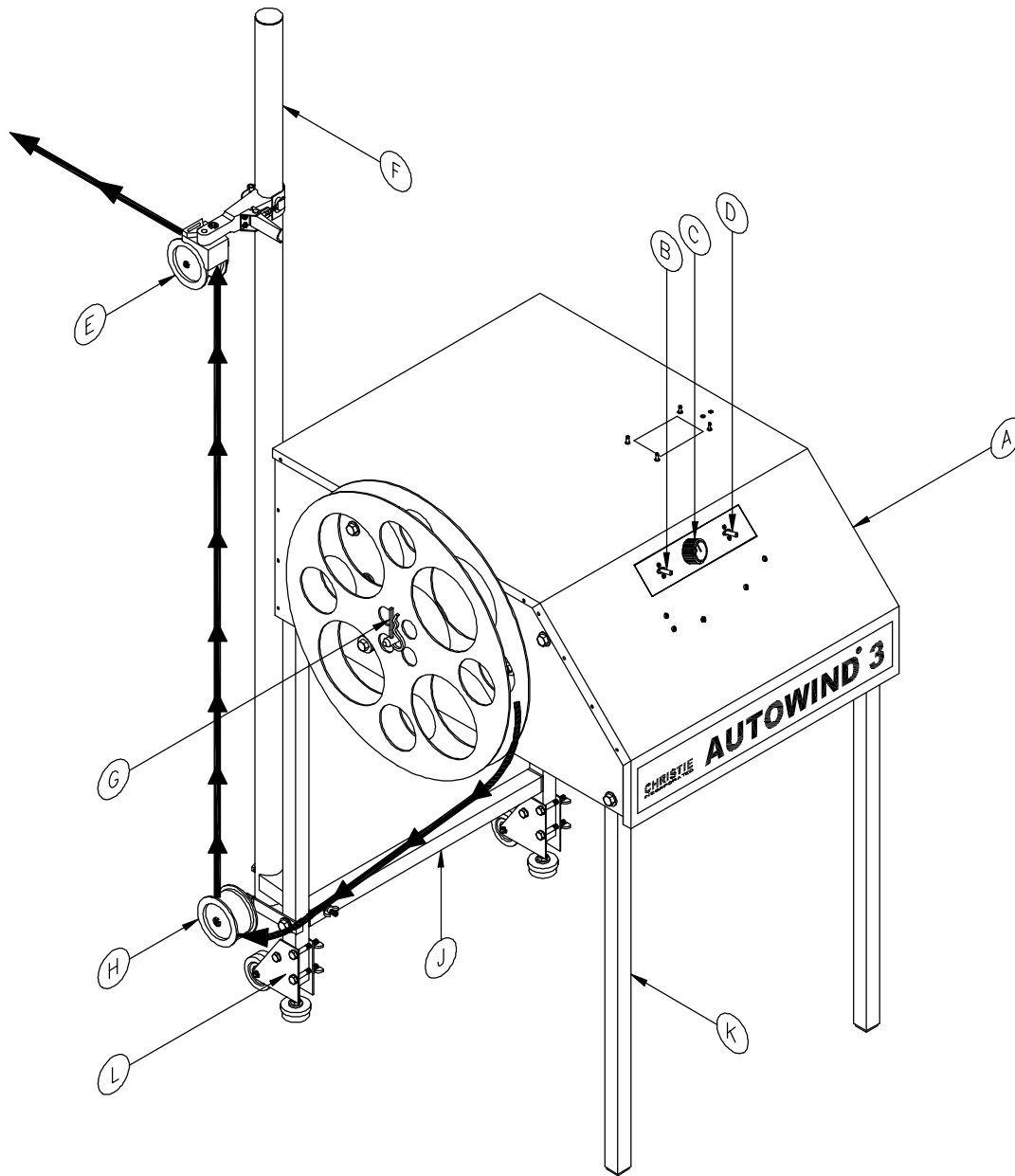
Do not mate an earlier AW2-model make-up table with the Autowind-3R.

### 5.2. AUTOWIND CONTROLS

---

The Autowind control assembly (item 15 in Figure 3-2) is on the side of the column (item 1 in Figure 3-2), above the slide bar (item 11 in Figure 3-1). The controls are:

- AC POWER ON/OFF SWITCH WITH PILOT LIGHT (item 16 in Figure 3-2)  
This switch must be set to ON, and the pilot light must come on, before the Autowind can operate. However, the power switch does not have to be set to ON for operation of the Autowind from the make-up table.
- MAKE-UP MODE SWITCHES (item 17 in Figure 3-2)  
The platters are numbered consecutively from top to bottom. Push the #1, #2, or #3 switch to select the platter that will be used to make up or tear down the program.



- A: Make-Up Table Top
- B: Left (LOAD SPINDLE/OFFLOAD PLATTER) Control Panel Switch
- C: Speed Control Knob
- D: Right (RUN/OFF/BRAKE) Control Panel Switch
- E: Top Swivel Roller
- F: Roller Post
- G: Film Reel
- H: Bottom Swivel Roller
- J: Horizontal Support Bar
- K: Front Leg
- L: Rear Leg Roller

**Figure 5-1: Make-Up Table and Film Track to Autowind**

### 5.3. MAKE-UP TABLE CONTROLS

The make-up table control panel is located on the front of the make-up table console (item A in Fig. 5-1). The controls are:

- **LOAD SPINDLE/OFFLOAD PLATTER SWITCH** (item B in Figure 5-1)  
This switch is located on the left side of the panel. It selects the drive motor of the platter or spindle. This is a three-position switch; it is OFF in the center position.
- **RUN/OFF/BRAKE SWITCH** (item D in Figure 5-1)  
This switch energizes the make-up table and controls braking. To stop both the platter and the reel spindle when unloading film:
  1. Quickly switch from RUN to BRAKE.
  2. Hold in that position until the platter stops.
  3. Release the switch toggle to turn the make-up table OFF.
- **SPEED CONTROL KNOB** (item C in Figure 5-1)  
This switch controls the platter or spindle speed when making up or tearing down. When turned fully counterclockwise, it is in the OFF position.



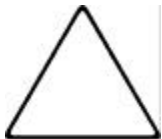
Always turn the speed control to OFF after completing a sequence to avoid a full-speed start.

### 5.4. VERIFYING LOAD SPINDLE/LOAD PLATTER OPERATION

With the LOAD SPINDLE/OFFLOAD PLATTER switch in the OFF (center) position, perform the following steps:

1. Push make-up mode switch (item 17 in Figure 3-2) to select desired platter.
2. Set left make-up table control panel switch (item B in Figure 5-1) to OFFLOAD PLATTER (*Down*). Set right control panel switch (item D in Figure 5-1) to RUN (*Up*).
3. Gradually turn speed control knob (item C in Figure 5-1) clockwise. Verify that correct platter does rotate counterclockwise. Maximum platter speed should be about 60 RPM.
4. Turn speed control knob OFF.
5. Set left control panel switch (item B in Figure 5-1) to LOAD SPINDLE (*Up*). Set right control panel switch (item C in Figure 5-1) to RUN (*Up*).
6. Turn speed-control knob clockwise. Verify that make-up table spindle turns in counterclockwise direction.
7. Push right control panel switch downward to BRAKE position and hold it there. Observe that spindle continues to turn; spindle torque will be proportional to speed-control knob setting. Release left control panel switch and let it return to OFF position.

Repeat steps 1 - 7 for each platter. The make-up table may be disconnected from the Autowind column if desired.



If any of the above procedures does not check out properly, refer to the [Troubleshooting Guide \(Section 8\)](#) and [Schematics \(Appendix A\)](#).

## 5.5. POST-INSTALLATION CHECKOUT PROCEDURES

---

To verify proper operation of the newly installed Autowind-3R Film Handling System:

1. Load five- to ten-minute film onto Autowind.
2. Run film through projector to (take-up) and from (feed-out) all three platters.



If any speed settings are incorrect or if the system malfunctions in some other manner, execute the troubleshooting procedures in [Section 8](#) of this manual.

## 6. OPERATING THE AUTOWIND

---



These procedures require film in the projection system. For the initial checkout of the Autowind, Christie strongly recommends the use of a 5- to 10-minute film to test the operation of all platters before loading a full show onto the system.

### 6.1. LOADING AND UNLOADING FILM

---

#### 6.1.1. LOADING FILM ONTO THE AUTOWIND

---

1. Position make-up table four to five feet from Autowind. Place post end toward platters. Connect make-up table to Autowind as described in [Section 5.1](#).
2. Place take-up ring (item 37 in [Figure 3-1](#)) onto selected platter. Push corresponding make-up mode switch (item 17 in [Figure 3-2](#)).
3. Place first reel of film on make-up table spindle (see [Figure 5-1](#)). Verify that film comes off reel with clockwise rotation of table spindle.
4. Pull film leader from reel. Thread film under lower roller and over top roller. Ensure that rollers caster toward reel and platter, respectively.
5. Draw film toward take-up ring and place end of film in take-up ring slot.



The film leader must be long enough to run from the Autowind to the projector and back to the Autowind.

6. Adjust height of top swivel roller (item 5 in [Figure 3-1](#)) so that film clears edge of platter.



Adjust height carefully. If the film track is too low, the film could be scratched; if the track is too high, the film could “climb” the take-up ring.

7. Set left switch on make-up table to LOAD PLATTER (*Down*). Set right switch to RUN (*Up*).

8. Gradually rotate speed control knob to increase speed and wind film from reel to platter. When reel is empty, turn speed control to OFF and push brake switch to stop platter.
9. Place next film reel on reel spindle. Cut off leader and splice film to tail end of preceding film.



Always splice film with tape on both sides of the film.

After the splice is made, use a white or yellow marking crayon or tape to mark the splice for future reference.

10. Again set right switch to RUN, turn speed control to start loading platter, and let run until reel is empty.
11. Repeat steps 8 through 10 above until entire length of film is loaded onto platter. (The Autowind system with 52-inch platters can accommodate approximately 25,000 feet of film.)
12. Place anti skid clips around periphery of wound film after complete make-up. Moisten cups with water so they will adhere securely to platter.

### 6.1.2. LOADING NEW SHOWS

---

1. Transfer film from standard 2,000-foot shipping reels onto 6,000-foot reel on rewind bench. During this sequence, inspect film for bad splices, cue marks, and other defects.
2. Perform necessary splices on rewind bench as usual.
3. Place 6,000-foot reel on make-up table reel spindle and transfer to Autowind platter.

During the transfer period, prepare another 6,000-foot reel on the rewind bench. In the intermission following the first feature, break the splice and rewind the second feature on a different platter.

Transfer film from one platter to another by properly threading and driving the take-up platter. Use the make-up table speed control knob to regulate the take-up speed of the platter. Before beginning the transfer, verify that the appropriate make-up mode switch is selected on the door module assembly.

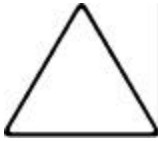
### 6.1.3. UNLOADING FILM FROM THE AUTOWIND

---

Film can be removed from any platter. Push the appropriate make-up mode switch (item 17 in [Figure 3-2](#)) to select the platter.

1. Place empty 2,000- or 6,000-foot reel on make-up table reel spindle.
2. Grasp outside end of film on platter to be unloaded. Draw film toward make-up table. Thread film over top roller, which has been adjusted to correct height, and under bottom roller. Attach film to empty reel on reel spindle.
3. Set left switch to LOAD SPINDLE (*Up*) and right switch to RUN (*Up*).

4. Turn speed control knob slowly clockwise from OFF. Spindle will rotate and pull film from platter. Watch for splice as reel fills.
5. When splice appears to be 6 to 8 turns from coming off platter, quickly switch from RUN to BRAKE and hold switch until platter stops.
6. Turn speed control knob back to OFF.



If the splice is already on the shipping reel, set the left switch to LOAD PLATTER and the right switch to RUN, and slowly turn the speed control knob clockwise. (This operation reverses the platter rotation and pulls the film back onto the platter until the splice reappears.) Turn the speed control knob back to OFF.

7. Open film splice.
8. Splice leader to film on reel.
9. Splice tail to end of film coming from Autowind.
10. Remove full reel from reel spindle and place it in its film can.
11. Repeat steps 1 through 10 until all film has been transferred from Autowind to original reels.

## 6.2. FILM THREADING PROCEDURE

1. Pinch ends of take-up ring together and lift straight up from platter being used.
2. Place take-up ring on empty platter. (With the Autowind system, film can be fed from any platter and rewind back onto any other empty platter of the system).
3. Grasp end of film from inside of loop that was just removed from slot in take-up ring. Thread film around feed arm (item 23 in [Figure 3-3](#)). As film is pulled, platter will turn and feed film as required (POWER ON switch set to ON).
4. Carry film to vertical column of Autowind. Thread onto top and bottom rollers of the vertical column.
5. After film has been threaded through top roller assembly (item 5 in [Figure 3-1](#)), pull through enough film to reach to projector and back to Autowind.
6. Thread film through projector as usual.



If a check for proper projector threading or framing is desired at this point, start the projector or run it manually for a few frames.

7. Return film start through bottom roller assembly (item 6 in [Figure 3-1](#)) and cluster roller (item 8 in [Figure 3-1](#)) to Autowind platter where take-up ring was previously placed.
8. Move return arm to vertical column and hold it in position.

9. Place film around return roller. Insert end of film into slot of take-up ring.
10. Remove any excess film slack:
  - a) While guiding film onto return arm roller, move return arm slowly away from vertical column. When arm is 14 to 16 inches away from vertical column, platter will begin to turn slowly.
  - b) Allow platter to rotate at a slow speed until all slack is removed from film coming from projector.
  - c) Release arm when slack has been eliminated.



Ensure that the take-up arm is set in such a position that the platter motor starts simultaneously with the projector. This is especially important for 70-mm films. To set the take-up arm in this position, turn the platter clockwise until the platter motor begins to pull the film.

The Autowind system is now ready for operation with the projector. Before starting the projector, check to ensure that **all** of the steps already described in this manual have been completed.

## **6.3. AUTOWIND SYSTEM OPERATION**

---

### **6.3.1. OPTIMIZING OPERATIONS**

---

Christie makes the following recommendations for optimum Autowind operation and performance:

- If two separate films are being used, split the program onto two platters, with one film on each platter, after the Autowind system is loaded. This enables a smoother feed of the film from the platter and reduces the possibility of oscillation due to dirt, static electricity, and old or brittle film.
- Keep the projection booth temperature close to 70°F (23°C). At lower temperatures, the film tends to become brittle and stiff; this can cause oscillation and erratic operation of the feed arm.

### **6.3.2. RUNNING THE SYSTEM**

---

1. Verify that power switch is pushed in to ON position and pilot light is ON.
2. Start projector. Observe both feed and return platter on Autowind.

During the initial start-up, there may be some oscillation of the return and feed arms; this condition should settle to a reasonable equilibrium within one or two minutes.

During the first six to eight revolutions of the feed sequence, the film feed may lag somewhat. This is normal. When the platter attains normal speed, the feed control arm will settle to its proper operating position, approximately midway between start and maximum speed.



A malfunction is occurring if the film wraps around the center feed control assembly more than three or four times during the first 10 to 20 revolutions. Stop the projector immediately and check the platter speed (see [Section 5.4](#)).



- Unless a serious malfunction occurs, do not turn the projector off until the take-up arm and platter have had time to settle into a steady operating motion. If the projector is turned off too quickly after startup, the momentum of the platter may cause film breakage.
- Similarly, do not “inch” the projector by rapidly turning the motor on and off.

## 7. MAINTENANCE AND ADJUSTMENTS

---

The Autowind-3R Film Handling System is a simple and highly reliable system when properly installed and aligned. The reliability of the Autowind is increased by the presence of the third platter: If one platter malfunctions, operation can continue with the other two platters.

Furthermore, the motor control cards are interchangeable: They can be plugged into any of the three connectors (see items 6 and 7 in [Figure 4-1](#)). The drive motors (item 9 in [Figure 3-1](#)) are also interchangeable, and are mounted for easy removal and replacement.

Always perform basic preventive maintenance procedures at regularly scheduled intervals to maintain peak system performance of the Autowind-3R Film Handling System.

### 7.1. PREVENTIVE MAINTENANCE

---

Christie strongly recommends execution of the maintenance procedures described in this section at least as often as indicated.

#### 7.1.1. DRIVE MOTORS

---

1. At least every six months, remove drive motor brush caps and brushes; use compressed air to blow carbon dust from motors.



A platter drive motor will short to ground if too much carbon dust accumulates inside the motor. This procedure is essential to protect drive motors from grounding out.

2. At least every six months or after 1,500 hours of operating time, whichever comes first, check drive motor brushes.
3. Replace drive motor brushes when brushes have worn to ¼-inch length or less. This prevents damage to commutator.
4. Check rubber on drive motor wheels annually. Replace any that show excessive wear. If wheel rubber wears too thin, motor cannot apply proper pressure to platter drive hub, and drive wheel may slip.

### **7.1.2. PLATTERS**

---

1. Clean platter surfaces with *Fantastik* or *Like Magic*; use detergents and water for normal dust and dirt. Do not use abrasive cleaners.
2. Use solvents to remove wax and grease build-up, but avoid contact with rollers or bearings.
3. Clean feed control plate and rollers regularly with soft bristle brush to remove dust accumulation.

### **7.1.3. ROLLERS**

---

The rollers are made of a Teflon composition that normally requires no lubrication. A coating of light-machine oil is applied to the roller shaft at the factory in order to prevent corrosion and ensure smooth operation.

Roller bearings are used on the make-up table swivel rollers because of the heavy loads and high speeds. These roller bearings are lubricated at the factory with LUBRIPLATE 130-AA grease.

### **7.1.4. SPARE PARTS**

---

Christie recommends that the items described on the spare-parts list be kept in the projection booth.

### **7.1.5. FILM GUIDE SHIELD**

---

The film guide shield prevents dirt, film pieces, tape, and other debris from jamming or interfering with the operation of the film position sensor. Periodic cleaning of the film guide assembly is necessary. Christie recommends that the shield be cleaned at least once a week.

1. Use long dry bristled brush.
2. Stroke away from feed plate to keep foreign matter out of film sensor bearing area.

If the shield needs more thorough cleaning, remove the complete assembly (see following section) and wash it with an agent such as standard dishwashing detergent. A solvent may be necessary to remove wax buildup.

### **7.1.6. REMOVING AND INSTALLING FILM GUIDE SHIELD**

---

1. To remove film guide assembly (items 19, 20, 21, and 30 in [Figure 3-3](#)), loosen #10 philips head screw (item 18 in [Figure 3-3](#)) completely and lift film guide from feed control plate.
2. Disassemble film guide assembly.
3. Clean shield. Rinse thoroughly and let dry completely before reinstalling.
4. Place shield (item 21 in [Figure 3-3](#)) on film guide bracket (item 30 in [Figure 3-3](#)). Match holes to align pieces.
5. Secure by installing screw and guide bar (items 19 and 20 in [Figure 3-3](#)).

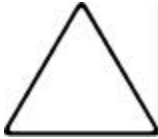
6. Reinstall completed assembly on feed control plate and secure in place with same #10 Philips head screw (item 18 in [Figure 3-3](#)).

### 7.1.7. STATIC ELECTRICITY

In today's soundproofed, carpeted, air-conditioned projector booths, particularly inside wooden buildings, static electricity on the film can cause oscillation and erratic operation of the feed arm. To prevent static electricity buildup:

- Spray carpet and area around Autowind with static remover spray (commercially available in aerosol cans).
- Check electrical grounding of platter disks to a known earth ground.

These precautions remove most static electricity and ensure smoother operation of the Autowind system.



Anti-Static grounding rollers, which mount to center feed plate on the Autowind, are available from Christie (P/N: 196088-001).

## 7.2. MOTOR SPEED CONTROL ADJUSTMENTS



The Autowind-3R Film Handling System must be leveled prior to making any speed control adjustments.

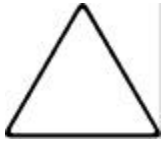
Before adjusting motor speed control, complete system checkout as described in [Section 5.5](#).



If any speed settings are incorrect or if the system malfunctions in some other manner, execute the troubleshooting procedures in [Section 8](#) of this manual.

For correct alignment and adjustment of all speed control mechanism components:

1. Turn power OFF.



When variable density filter is set in correct position, film position sensor arm may not be positioned directly over 0° mark on center feed plate. This does *not* affect operation; filter STOP position setting controls operation.

2. Verify that film sensor and return arm mechanism work freely and that no parts are dragging or improperly touching.
3. Remove appropriate motor speed control card and turn POWER ON.
4. Set film position sensor over 70° mark on feed control plate and hold in place. Allow at least five minutes after power is applied for control sensor to reach equilibrium.
5. Read resistance across pins 12 and 14 of motor speed control card connector (see [Figure 3-1](#)). If necessary, adjust LED intensity to obtain approximately 70 KΩ by turning the appropriate LED potentiometer. (Turn potentiometer clockwise to decrease resistance, CCW to increase resistance). Allow sufficient time for control sensor photocell to stabilize. When set in this manner, the LED calibrates the complete control system to the correct values.



Do not adjust LED intensity to increase or decrease motor speeds.

6. Check resistance value at 100° mark or full speed settings. Resistance should read less than 60 KΩ.
7. Turn motor speed control Hi-Pot 50% CW; turn motor speed control Lo-Pot 50% CW.
8. Turn power OFF. Install motor speed control card. Turn power ON.



**WARNING**

**Do not touch card when power is on! Doing so may expose user to electrical shock.**

9. Set film position sensor to 70° mark and use Hi-Pot to adjust platter speed to 20±1 rpm. (Turn Hi-Pot clockwise to increase speed).
10. Set film position sensor to 20° mark and use Lo-Pot to adjust platter speed so that it just begins to move.
11. Reset film position sensor to 70° mark and allow one minute for system to stabilize. Re-check platter speed; if necessary, use Hi-Pot to reset to 20±1 rpm.
12. Move return arm toward Autowind column, platter should come to a stop.



The Autowind is a demand system. The platter operates at varying speeds to enable the film to feed to the projector at a constant speed. Film “sticking” caused by static, wax, or some other problem may cause the film position sensor to move to different positions during operation. Further, the film condition and the diameter of the film on the platter cause the film to enter the feed plate at varying angles.

**Do not** change speeds to accommodate these conditions. Once the motor speeds have been set, they will meet all operating conditions in either feed-out or take-up mode for both 35-mm and 70-mm operation.

---

### 7.3. MAKE-UP TABLE ADJUSTMENT

---

1. Adjust starting speed of speed control by setting control knob about  $\frac{1}{8}$  inch from OFF detent.
2. Insert small trimming screwdriver through hole in panel face near MAX.
3. Turn screw until motor barely stops. (Turn screw CW to increase speed.)

## **8. TROUBLESHOOTING**

---

This section helps the user to identify and, where possible, correct system malfunctions. The sections below are organized by component. For each component, the manual lists symptoms associated with possible problems, and then presents a table containing probable causes and steps to be taken to correct the problem.

Christie suggests that, when using these troubleshooting procedures to correct a malfunction, users copy the appropriate tables, record observations, and include them with maintenance/repair records for future reference.

## 8.1. AUTOWIND PLATTER

### 8.1.1. MALFUNCTION: PLATTER DOES NOT RUN

The platter does not run when the system is on.

	Probable Cause	Corrective Action
<b>A</b>	No A-C voltage.	Provide necessary 100-120 volts AC to unit; verify that unit is plugged in and switch is set to ON.
<b>B</b>	Platter-mode switch is at inappropriate mode.	Set mode switch to correct mode.
<b>C</b>	Drive motor not plugged in.	Plug drive motor assembly into assembly.
<b>D</b>	Defective motor control card.	Test motor control card in another connector; replace if necessary.
<b>E</b>	Blown fuse on motor control card.	Replace fuse.
<b>F</b>	Defective control sensor.	1) Verify that LED is working; replace LED card if necessary. 2) Test control sensor in another connector; replace sensor if necessary.
<b>G</b>	Motor brushes worn or making poor contact.	Check drive motor brushes. Replace if worn below $\frac{1}{4}$ inch or worn unevenly.
<b>H</b>	Motor is fouled.	Blow carbon dust out of motor.
<b>I</b>	Motor is defective.	Replace motor.
<b>J</b>	Defective wiring or connections.	Check drive motor assembly power connection.
<b>K</b>	Drive wheel loose.	Check condition of drive wheel; replace or tighten as required.
<b>L</b>	Defective platter mode switch.	Check P/C board ON switch. If runners are burned off, replace switch.

**Table 8-1: Troubleshooting for Platter Refuses to Run**



### 8.1.2. MALFUNCTION: PLATTER RUNS TOO SLOW

The platter is running at less than 25 RPM for maximum feed/return.

	Probable Cause	Corrective Action
<b>A</b>	Photocell resistance not properly adjusted.	Measure and adjust resistance as described in <a href="#">Section 7.2</a> .
<b>B</b>	Motor speed control not properly adjusted.	Check and adjust motor speed control as described in <a href="#">Section 7.2</a> .
<b>C</b>	Platter binding.	1) Check platter level; level if necessary. 2) Check platter bearings for condition and lubrication. Replace or relubricate as required.
<b>D</b>	Drive wheel slipping.	1) Check spring tension on drive assembly. Replace as required. 2) Check wheel condition for wear or dirt. Clean or replace as required.
<b>E</b>	Axle binding.	Check axle assembly spring and bushing condition; replace if necessary.
<b>F</b>	Motor brushes worn or making poor contact.	Check drive motor brushes. Replace if worn below $\frac{1}{4}$ inch or worn unevenly.
<b>G</b>	AC line voltage too low (less than 105 volts).	Check AC voltage. If too low, install Variac or step-up transformer to provide 110-120 VAC.

**Table 8-2: Troubleshooting for Autowind Platter Too Slow**

**8.1.3. MALFUNCTION: PLATTER RUNS TOO FAST**

---

The platter is running at greater than 25 RPM for maximum feed or take-up.

	<b>Probable Cause</b>	<b>Corrective Action</b>
<b>A</b>	Photocell resistance not properly adjusted.	Measure and adjust resistance as described in <a href="#">Section 7.2</a> .
<b>B</b>	Motor speed control not properly adjusted.	Check and adjust motor speed control as described in <a href="#">Section 7.2</a> .
<b>C</b>	AC line voltage too high (more than 120 volts AC).	Check AC voltage. If too high, install Variac or step-down transformer to provide 100-120 volts, AC.
<b>D</b>	Light leaking into control sensor.	1) Verify that end cap is on securely. 2) Verify that ambient sunlight or work light is not responsible.

**Table 8-3: Troubleshooting for Autowind Platter Too Fast**

**8.1.4. MALFUNCTION: PLATTER RUNS ALL THE TIME**

---

The platter runs constantly.

	<b>Probable Cause</b>	<b>Corrective Action</b>
<b>A</b>	Drive motor shorted.	Replace drive motor.
<b>B</b>	Motor-speed control is not properly adjusted.	Check motor speed control. Adjust as described in <a href="#">Section 7.2</a> .
<b>C</b>	Light is leaking into control sensor.	1) Verify that end cap is on securely. 2) Verify that ambient sunlight or work light is not responsible.
<b>D</b>	Film-position sensor is sticking in ON position.	Determine cause of sticking and correct.

**Table 8-4: Troubleshooting for Platter Runs Constantly**

### 8.1.5. MALFUNCTION: PLATTER CREEPS

The platter does not come to a stop in the rest position.

	Probable Cause	Corrective Action
<b>A</b>	Photocell resistance not properly adjusted.	Measure and adjust resistance as described in <a href="#">Section 7.2</a> .
<b>B</b>	Motor speed control not properly calibrated.	Adjust motor speed control card RPM at 70° and 20° sensor positions.
<b>C</b>	Feed plate arm does not return to rest position.	Check feed plate sensor arm position and travel of variable density filter.
<b>D</b>	Defective motor control card.	Test motor control card in another connector; replace if necessary.
<b>E</b>	Defective control sensor.	Replace control sensor assembly.

**Table 8-5: Troubleshooting for Platter Creeping**

### 8.2. RETURN ARM

The return arm does not take up film slack.

	Probable Cause	Corrective Action
<b>A</b>	Platter speed too low.	Refer to <a href="#">Section 8.1.1</a> of this manual.
<b>B</b>	Misalignment of sensor arm or filter.	Check feed plate sensor arm position and travel of variable density filter.
<b>C</b>	Defective cam lever.	Check cam lever condition; replace or repair as necessary.
<b>D</b>	Film position sensor sticking.	Determine cause of sticking and repair.
<b>E</b>	Motor drive wheel slipping.	Determine cause of slipping and correct the situation.

**Table 8-6: Troubleshooting for Return Arm Not Taking Up Film Slack**

### 8.3. MAKE-UP TABLE

---

The make-up table does not operate.

	<b>Probable Cause</b>	<b>Corrective Action</b>
<b>A</b>	Table not plugged into column.	Plug make-up table into column. Verify that column has power.
<b>B</b>	Motor speed control improperly adjusted.	Adjust motor speed control.
<b>C</b>	Broken or missing belt.	Replace drive belt; check alignment.
<b>D</b>	Defective motor speed control sensor.	Replace motor speed control sensor assembly.
<b>E</b>	Worn motor brushes.	Replace motor brushes.
<b>F</b>	Motor drive slipping.	Ascertain that all drive components are securely tightened and in good condition.

**Table 8-7: Troubleshooting for Make-Up Table**

### 8.4. FILM BREAKAGE

---

Film breaks in make-up or tear-down mode.

	<b>Probable Cause</b>	<b>Corrective Action</b>
<b>A</b>	Excessive film tension	Reduce speed as needed to reduce tension.
<b>B</b>	High-speed start	Reset speed control after braking.

**Table 8-8: Troubleshooting for Excessive Film Breakage**

---

---

# Appendix A

---

---

## **Appendix A: Assembly Diagrams and Parts Lists**

---

Appendix A contains diagrams and parts lists for these major components of the Autowind-3R Film Handling System:

1. [Autowind-3R System](#)
2. [Axle Assembly](#)
3. [Door Panel and Control Modules](#)
4. [MK/MKE Make-Up Table](#)
5. [Platter Feed Control Assembly](#)
6. [Platter Support Arm.](#)

## A.1: AUTOWIND-3R FILM HANDLING SYSTEM

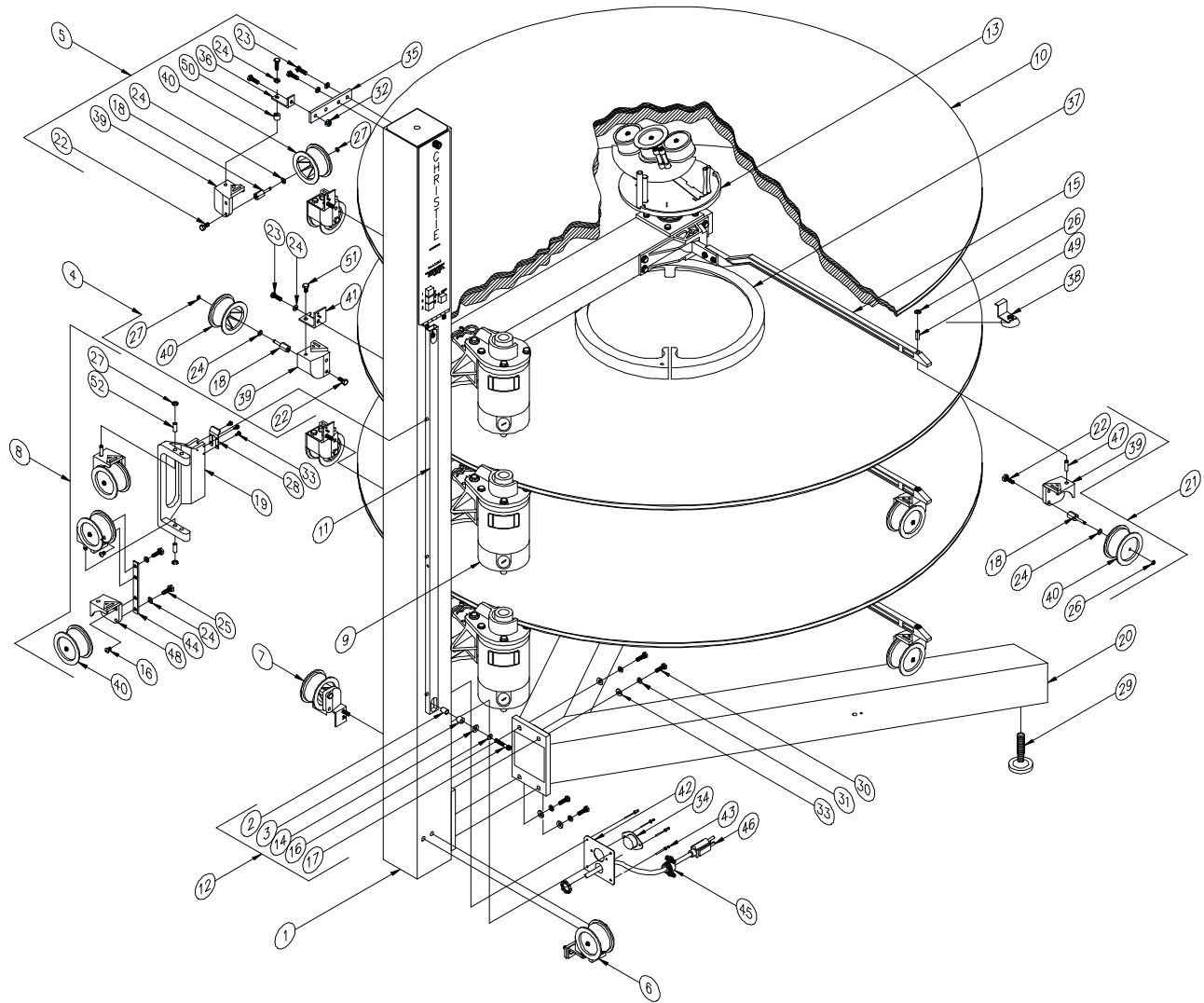


Figure A-1: Autowind-3R Film Handling System

#	Item Description	Part Number	Qty.
1	Column Assembly	193671-001	1
2	Nutsert, #1/4-20	515200-047	6
3	Spacer	191414-002	2
4	Roller Assembly, Take-Up	194502-001	3
5	Roller Assembly, Top	192897-001	1
6	Roller Assembly, Bottom	192876-001	1
7	Roller Assembly, Idler	194502-001	1
8	Roller Assembly, Cluster	192877-001	1
9	Platter Drive Assembly	192862-001	3
10	Platter Assembly, Aluminum	192899-001	3
11	Slide Bar Assembly	193032-001	1
12	Spacer, Slide Bar	191414-004	2
13	Plate Assembly, Feed Control	196050-001	1
14	Washer, Flat, #1/4	-	2
15	Return Arm Assembly	192835-001	3
16	Screw, Socket Cap, #1/4-20 x 0.375 in (0.9525 cm) L	-	2
17	Screw, Hex Head, #1/4-20 x 0.5 in (1.27 cm) L	-	2
18	Shaft Assembly	196213-001	10
19	Slide Bracket, Roller Cluster	192886-001	1
20	Base Assembly	193564-001	1
21	Swivel Roller, Return Arm Assembly	192879-001	3
22	Screw, Hex Head, #1/4-20 x 0.5 in (1.27 cm) L	-	4
23	Screw, Hex Head, #1/4-20 x 1.0 in (2.54 cm) L	-	10
24	Washer, Lock, #1/4	-	12
25	Screw, Hex Head, #1/4-20 x 0.875 in (2.2225 cm) L	-	2
26	E-Ring, Large	515700-061	3
27	E-Ring, Small	515700-107	11
28	Rest Plate	192887-001	1
29	Foot and Lock Nut Assembly	520650-003	2
30	Screw, Hex Head, #3/8-16 x 1.0 in (2.54 cm) L	-	4
31	Washer, Lock, #3/8	-	4
32	Nutlock, Chemical Adhesive	509101-005	2
33	Screw, Phillips Pan Head, 6-32 x 0.375 in (0.9525 cm) L	-	4
34	Socket, Make-Up Table Connection	524306-003	1

Table A-1: Parts List for Autowind-3R Film Handling System

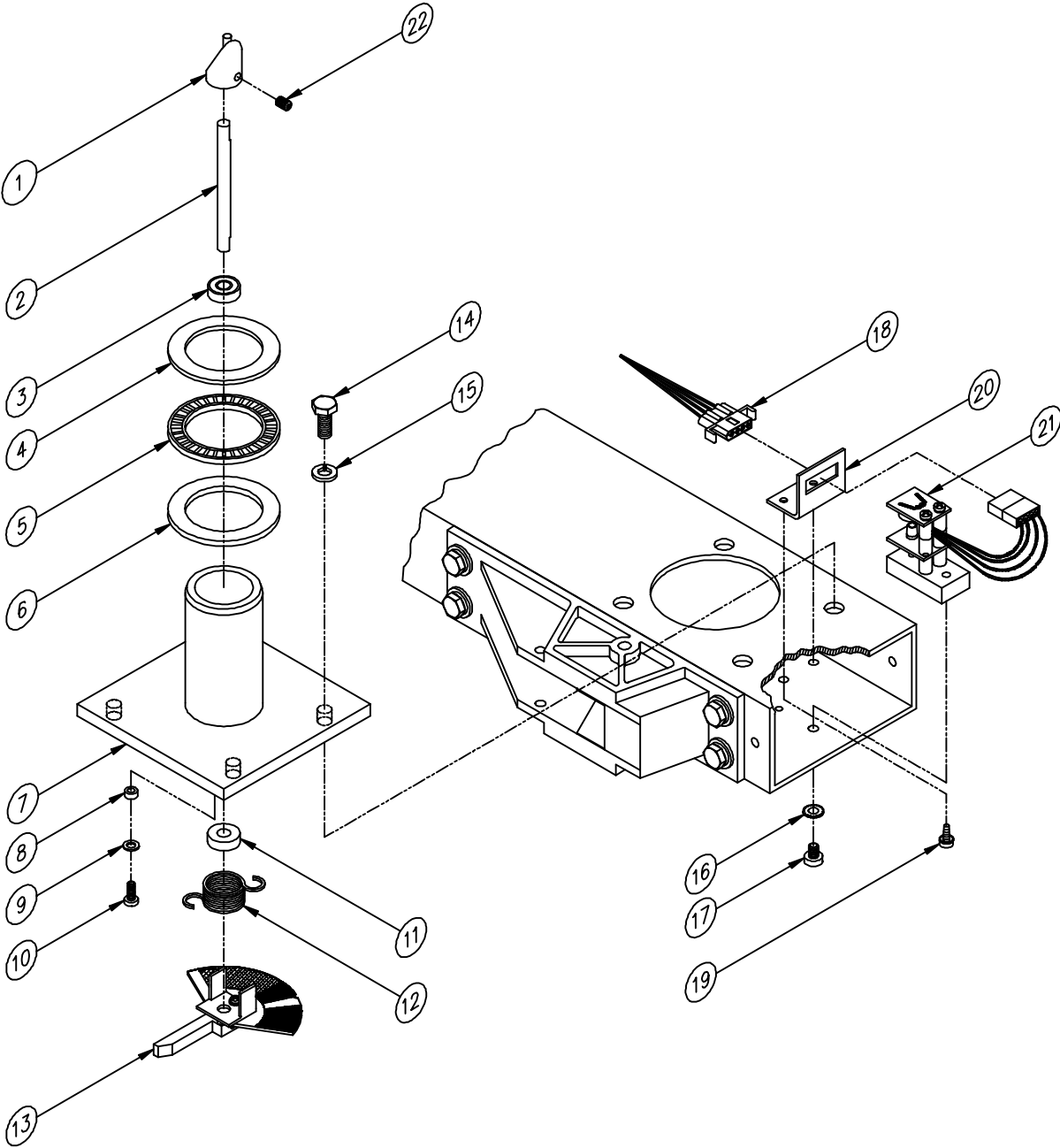
#	Item Description	Part Number	Qty.
35	Bracket	192875-002	2
36	Roller Bracket (Top and Bottom)	192816-002	2
37	Take-Up Ring Assembly	115713-001	2
38	Anti-Skid Assembly	114863-002	8
39	Swivel Bracket, Lefthanded	194201-003	11
40	Roller	194158-001	1
41	Bracket, Roller Mounting	194501-001	1
42	Plate, Connector	193553-001	4
43	Pop Rivet, Aluminum	515310-009	16
44	Bracket Cluster	194544-001	1
45	Strain Relief with Nut	515900-029	1
46	AC Power Cord	526030-012	1
47	Shaft, Swivel	192813-001	5
48	Swivel Bracket, Righthanded	194201-004	1
49	Bracket, Pivot	192844-001	3
50	Spacer, Bracket	191414-004	2
51	Bolt, #1/4-28	515500-502	4
52	Sleeve Bearing	515000-173	2
--	Kit, Spare Parts Supplemental	193111-001	1

**Table A-1: Parts List for Autowind-3R Film Handling System (Continued)**



This page intentionally left blank.

**A.2: AXLE ASSEMBLY**



**Figure A-2: Axle Assembly Diagram**

#	Item Description	Part Number	Qty.
1	Coupling, Filter	193882-001	1
2	Shaft, Filter	193883-001	1
3	Ball Bearing	515000-193	1
4	Thrust Washer, 0.125 in (0.3175 cm) THK	515000-159	1
5	Thrust Bearing	515000-158	1
6	Thrust Washer, 0.094 in (0.23876 cm) THK	515000-157	1
7	Platter, Axle	194899-001	1
8	Spacer	515500-095	1
9	Washer, Flat, #8	-	1
10	Screw, Phillips Pan Head, #6-32 x 0.375 in (0.9525 cm) L	-	1
11	Bushing	193878-001	1
12	Spring	193877-001	1
13	Filter Assembly	193889-001	1
14	Screw, Hex Head, #1/4-20 x 0.625 in (1.5875 cm) L	-	4
15	Washer, Split Lock, #1/4	-	4
16	Washer, #10, External Star Lock	-	1
17	Screw, Phillips Pan Head, #10-32 x 0.25 in (0.635 cm) L	-	1
18	Column Harness, AW3	192880-080	1
19	Screw, Phillips Pan Head, Type B, #6-32 x 0.375 in (0.9525 cm) L	-	2
20	Bracket, Plug Support	192798-001	1
21	Control Sensor Assembly	192847-002	1
22	Screw, Socket, #10-32 x 0.25 in (0.635 cm) L	515500-077	2

**Table A-2: Parts List for Autowind 3R Axle Assembly**

### A.3: DOOR PANEL AND CONTROL MODULES

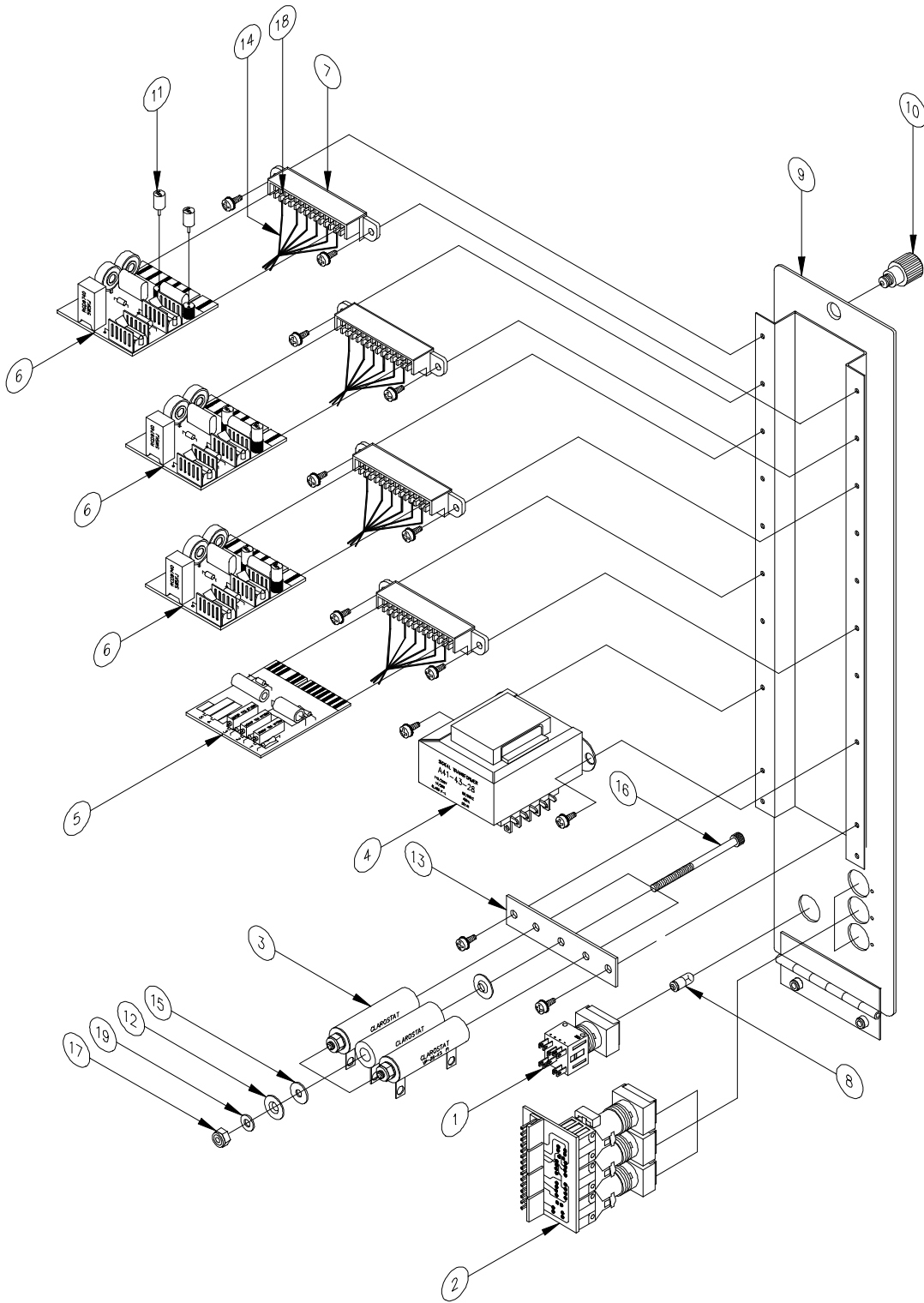


Figure A-3: Door Panel and Control Modules Diagram

#	Item Description	Part Number	Qty.
1	OFF/ON Switch	578000-076	1
2	Switch Assembly, Make-Up/Brake-Down Mode Selector	194871-001	1
3	Resistor, 25W, 3Ω	555030-903	3
4	Transformer, Step-Down	194548-002	1
5	Power Control Card, LED	117509-001	1
6	Motor Control Card	192883-001	3
7	Socket, 15 Pin, 90°	524715-005	4
8	Light Bulb, OFF/ON Indicator	546536-002	1
9	Panel Door Module	194911-001	1
10	Screw, Captive, #1/4-20	515700-117	1
11	Fuse, 125-V, 5-Amp	546105-008	6
12	Washer, Steel, #8-32	515810-404	6
13	Bracket, Resistor Mounting	192882-001	1
14	Harness Assembly, Door Module	192870-001	1
15	Washer, Silastic	100425-001	3
16	Socket Head, #8-32 x 2.5 in (6.35 cm) L	-	3
17	Nut, Self-Locking, #8-32	-	3
18	Connector Pin, Push-In	524900-040	27
19	Washer, Flat, #8	-	3

**Table A-3: Parts List for Door Panel and Control Modules**

### A.4: MK/MKE MAKE-UP TABLE ASSEMBLY

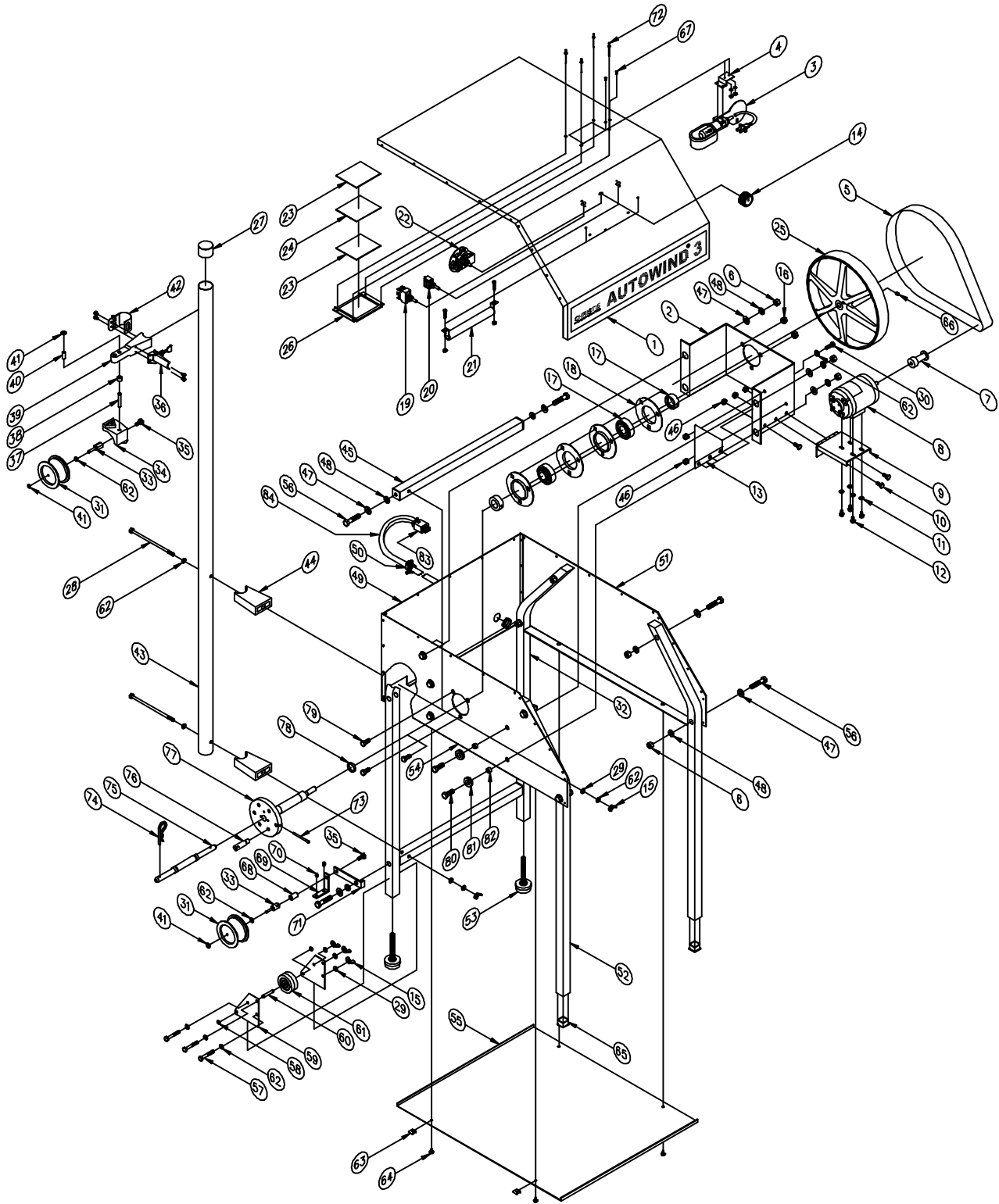


Figure A-4: MK/MKE Make-Up Table

#	Item Description	Part Number	Qty.
1	Top Wrap	193071-001	1
2	Bracket, Motor, and Shaft	193062-001	1
3	Lamp	546650-002	1
4	Bracket, Lamp	193117-001	1
5	Drive Belt	515000-190	1
6	Nut, Hex Head, #3/8-16	-	12
7	Pulley	193055-001	1
8	Motor and Lead Assembly	193060-001	1
9	Motor Pivot Bracket	193054-001	1
10	Screw, Hex Head, #1/4-20 x 0.875 in (2.2225 cm) L	-	3
11	Washer, Flat, #10-32	-	4
12	Screw, Phillips Pan Head, #10-32 x 0.5 in (1.27 cm) L	-	4
13	Bracket	193097-001	1
14	Control Knob, MK3	520570-058	1
15	Nut, Wing, #1/4	-	8
16	Nut, Hex Head, #5/16-18	-	3
17	Bearing	515000-142	2
18	Flangette	515000-144	4
19	Toggle Switch, Spindle/Platter	578712-012	1
20	Toggle Switch, Brake/Switch	578722-013	1
21	Resistor, 100W, 75Ω	555750-003	1
22	Speed Control Assembly, MK3	193067-001	1
23	Safety Window, Viewer	191826-001	2
24	Screen, Mylar	192024-001	1
25	Wheel, Drive	192224-001	1
26	Retainer, View Screen	191823-001	1
27	Electrical Connector Plug	515000-179	1
28	Screw, Hex Head, #1/4-20 x 6.0 in (15.24 cm) L	-	2
29	Washer, Lock, #1/4-20	-	8
30	Screw, Hex Head, #1/4-20 x 0.625 in (1.5875 cm) L	-	2
31	Roller Assembly, High-Speed, Flanged	194209-001	2
32	Leg, Rear	193083-001	2

Table A-4: Parts List for MK/MKE Make-Up Table

#	Item Description	Part Number	Qty.
33	Shaft Assembly	196213-001	2
34	Swivel Bracket	194201-003	1
35	Screw, Hex Head, #1/4-20 x 1.375 in (3.4925 cm) L	-	2
36	Latch, Tension	515700-103	1
37	Swivel Shaft	192813-001	1
38	Spacer, Roller Assembly	191414-006	1
39	Support, Roller	192827-002	1
40	Sleeve Bearing	515000-173	1
41	E-Ring, Small	515700-107	3
42	Strap Clamp with Bracket, Hinged	192175-001	1
43	Roller Post	192158-002	1
44	Stand-Off, Machined	192270-001	2
45	Horizontal Bar Assembly	192155-001	2
46	Nut, Hex Head, #1/4-20	-	5
47	Washer, Flat, #3/8-16	-	16
48	Washer, Lock, #3/8-16	-	16
49	Panel, Rear	192164-001	1
50	Connector, Strain Relief, 0.5 in (1.27 cm)	515900-029	1
51	Side Plate, Righthand	193082-002	1
52	Leg, Front	193084-001	2
53	Leveler, Foot	515000-072	2
54	Side Plate, Lefthand	193082-001	2
55	Panel, Lower	193089-001	1
56	Screw, Hex Head, #3/8-16 x 2.0 in (5.08 cm) L	-	10
57	Screw, Hex Head, #1/4-20 x 1.75 in (4.45 cm) L	-	6
58	E-Ring, Large	515700-061	4
59	Bracket, Wheel Assembly	192672-002	4
60	Axle	192673-002	2
61	Wheel	520810-201	2
62	Washer, Flat, #1/4-20	-	14
63	#8 Speed Nut, Type U	515700-112	4
64	Screw, Phillips Pan Head, #8-1/2	-	4
65	Glide, Plastic	515000-299	2
66	Screw, Set, 0.1875 in (0.47525 cm) L	-	1

Table A-4: Parts List for MK/MKE Make-Up Table (Continued)



#	Item Description	Part Number	Qty.
67	Screw, with Washer, #4-40 x 0.5 in (1.27 cm) L	-	2
68	Spacer	192948-004	1
69	Bracket, Swivel	192815-002	1
70	Film Guide	192804-001	4
71	Bracket, Bottom Roller	193072-001	2
72	Pop Rivet, C'Sink, 0.125 in (0.3175 cm) x 0.25 in (0.635 cm)	515310-002	4
73	Screw, Locking	192167-002	1
74	Pin, Cotter	515000-117	1
75	Shaft, Reversible	192159-001	1
76	Drive Pin	192160-001	1
77	Shaft/Hub, Machined	192254-001	1
78	Spacer	192168-002	1
79	Screw, Hex Head, # <sup>5</sup> / <sub>16</sub> -18 x 0.75 in (1.905 cm) L	-	3
80	Screw, Hex Head, # <sup>3</sup> / <sub>16</sub> x 1.0 in (2.54 cm) L	-	4
81	Clamp, Grommet	518508-021	4
82	Bushing	192792-001	4
83	Plug with Cable Clamp	524206-004	1
84	Cable Assembly	192945-002	1

**Table A-4: Parts List for MK/MKE Make-Up Table (Continued)**

## A.5: PLATTER FEED CONTROL ASSEMBLY

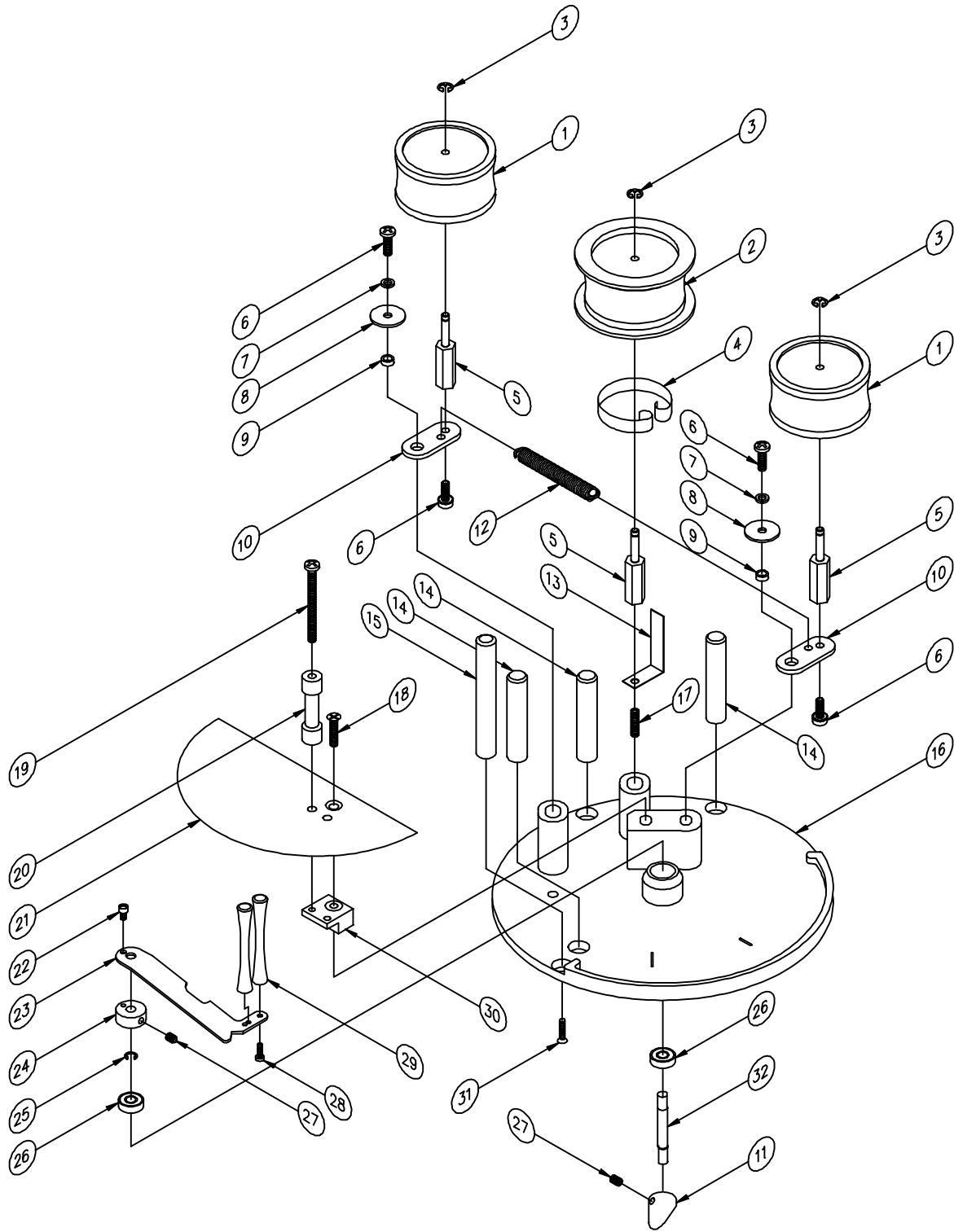


Figure A-5: Platter Feed Control Assembly

#	Item Description	Part Number	Qty.
1	Tension Roller Assembly, Side	194158-002	2
2	Roller Assembly, Center	194158-003	1
3	E-Ring, Small	515700-107	3
4	Spring Stop	193033-001	1
5	Post and Shaft, Roller Assembly	192691-008	3
6	Screw, Phillips Pan Head, #10-32 x 0.5 in (1.27 cm) L	-	4
7	Washer, #10, Split Lock	-	2
8	Washer, #10, Large Pattern, Flat, Steel	-	2
9	Bushing	192923-001	2
10	Link	192526-001	2
11	Arm Coupling	193884-001	1
12	Spring, Tension	515610-026	1
13	Bracket, Spring Stop	193034-002	1
14	Guide Pin	115221-001	3
15	Guide Post	192530-001	1
16	Feed Plate, Machined	194900-001	1
17	Screw, Socket, #10-32 x 0.75 in (1.905 cm) L	515500-080	1
18	Screw, Flat Head, #10-32 x 0.75 in (1.905 cm) L	-	1
19	Screw, Round Head Slot, #10-32 x 2.25 in (5.715 cm) L	-	2
20	Guide Bar, 35 mm	193421-002	2
21	Shield	193423-001	1
22	Screw, Pan Head, #6-32 x 0.3125 in (0.79375 cm) L	-	1
23	Arm	193508-001	1
24	Adapter	193880-001	1
25	Crescent Ring	515700-110	1
26	Ball Bearing	515000-193	2
27	Screw, Socket, #10-32 x 0.25 in (0.635 cm) L	515500-077	2
28	Screw, Pan Head, #4-40 x 0.375 in (0.9525 cm) L	-	2
29	Tip, Film Position	192800-001	2
30	Bracket, Film Guide	193422-001	1
31	Screw, 100°, Flat Head, #6-32 x 0.5 in (1.27 cm) L	-	4
32	Shaft, Arm	193881-001	1

Table A-5: Parts List for Platter Feed Control Assembly

## A.6: PLATTER SUPPORT ARM

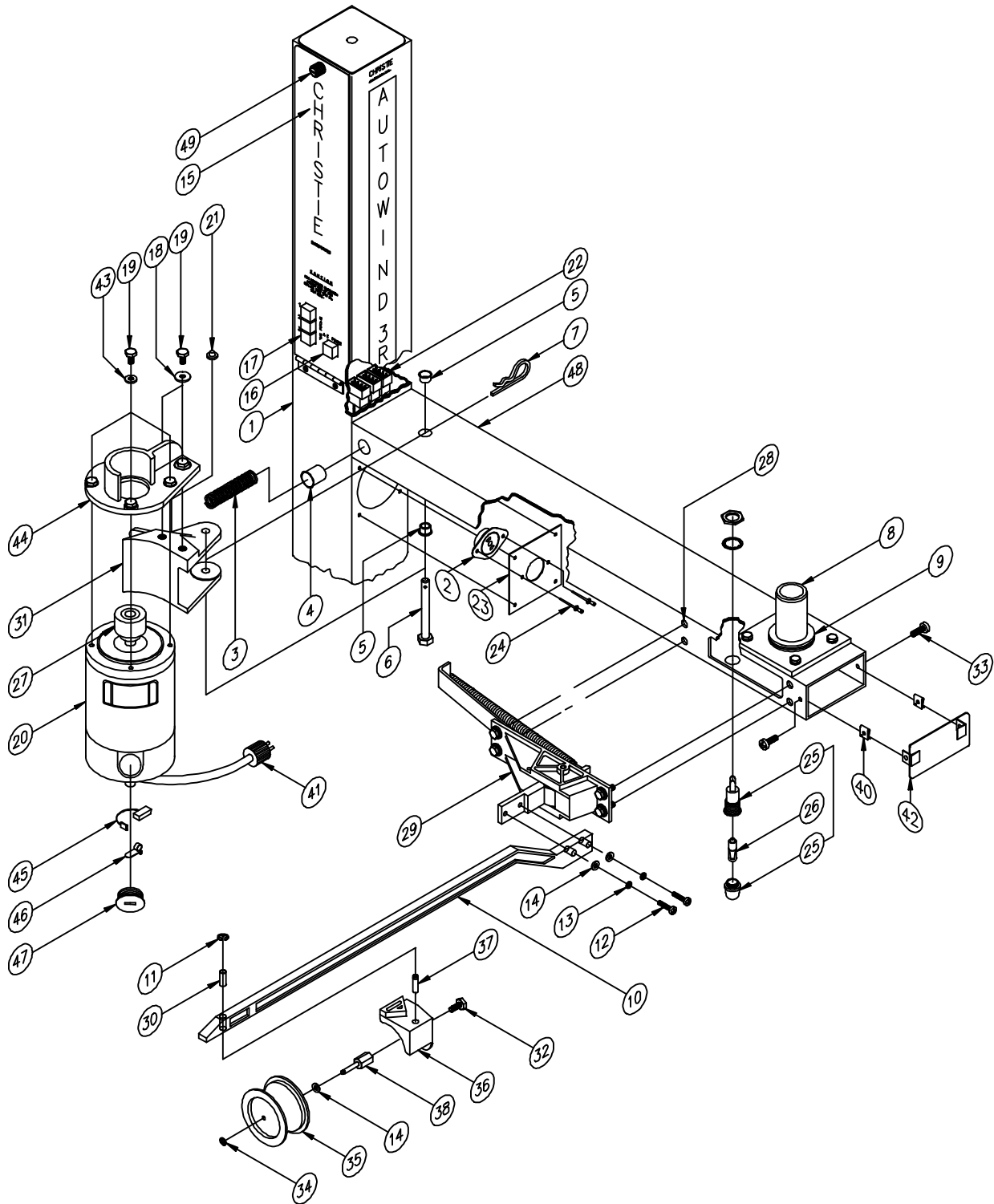


Figure A-6: Platter Support Arm

#	Item Description	Part Number	Qty.
1	Column Assembly	193671-001	1
2	Receptacle, Female	524303-001	3
3	Spring, Motor Tension	515610-025	3
4	Housing, Spring	192477-001	3
5	Bushing, Flanged	515000-174	6
6	Bolt, Motor Assembly Mounting	115419-001	3
7	Cotter Pin, #2-11/16	515000-117	3
8	Platter Axle	196051-001	3
9	Thrust Bearing Assembly	515000-157 to 515000-159	3
10	Return Arm Assembly	192835-001	3
11	E-Ring, Large	515700-061	3
12	Screw, Pan Head, #10-32 x 2.0 in (6.08 cm) L	-	6
13	Washer, Lock, #10	-	6
14	Washer, Flat, #10	-	9
15	Control Module Assembly	194911-001	1
16	ON/OFF Switch	578000-042	1
17	Select Switch, Make-Up Mode	192994-001	1
18	Washer, #3/8	-	6
19	Bolt, #1/4-20 x 0.5 in (1.27 cm) L	-	18
20	Motor with Plug, 90V, 1.1 Amp, 0.1 Hp	192890-001	3
21	Rubber Bumper	518800-008	3
22	Column Harness, AW3	192880-080	1
23	Plate, Socket	193552-001	3
24	Pop Rivet	515310-009	24
25	Indicator, White	546700-037	2
26	Bulb, 36V	546536-001	2
27	Drive Wheel	192826-001	3
28	Nutsert, #1/4-20	515200-047	12
29	Housing, Return Arm Mechanism	194373-001	3
30	Sleeve Bearing	515000-173	3
31	Bracket, Pivot	192844-001	3
32	Screw, Hex, #10-32 x 0.5 in (1.27 cm) L	-	3

Table A-6: Parts List for Platter Support Arm

#	Item Description	Part Number	Qty.
33	Screw, Sheet Metal, #8 x 0.5 in (1.27 cm) L	-	12
34	E-Ring, Small	515700-107	3
35	Roller	194158-001	3
36	Bracket, Swivel	194201-003	3
37	Shaft, Swivel	192813-001	3
38	Shaft Assembly	196213-001	3
39	Captive Screw, #1/4-20	-	6
40	#8 Speed Nut, U-Type	515700-112	6
41	Plug, 3-Prong (for spares only)	524203-022	3
42	End Cap	193665-001	3
43	Washer, Lock, #1/4	-	12
44	Motor Support	192839-001	3
45	Motor Brush	599000-089	6
46	Spring, Motor Brush	599000-091	6
47	Cap	-	6
48	Support Arm, Platter	193669-001	3

**Table A-6: Parts List for Platter Support Arm (Continued)**

---

---

# Index

---

---

<b>A</b>		<b>L</b>	
Autowind Controls	5-1	Light-Emitting Diode (LED)	4-1
Autowind Platter		Adjustment	7-4
Malfunctions	8-2 – 8-5	LOAD SPINDLE/OFFLOAD PLATTER Switch	5-3
Autowind-3R Film Handling System		<b>M</b>	
Assembling	3-1	Main Column	
Checkout Procedures	5-4	Assembly	3-1
Drawing	A-2	MAKE-UP MODE Switches	5-1
General Description	2-1	Make-Up Table	
Operation	6-4	Adjustment	7-5
Parts List	A-3	Assembly	3-7
Unpacking	2-1	Diagram	A-10
Axle Assembly		Malfunctions	8-6
Drawing	A-6	Parts List	A-11
Parts List	A-7	Motor Speed Control Card	4-1, 7-1, 7-4
		Adjustments	7-3
<b>C</b>		<b>N</b>	
Caution, Definition of	1-2	Note, Definition of	1-2
Column Rollers		<b>P</b>	
Assembly	3-6	Platter	4-1
Contacting Christie	2-2	Preventive Maintenance	7-2
Control Panel Switches	5-2	Platter Feed Control Assembly	
Control Sensor Assembly	4-1	Diagram	A-14
		Parts List	A-15
<b>D</b>		Platter Support Arm	4-1
Door Panel and Control Modules		Diagram	A-16
Diagram	A-8	Parts List	A-17
Parts List	A-9	POWER ON/OFF Switch	5-1
Drive Motors	4-1, 7-1	Preventive Maintenance	7-1
Assembly	3-1	<b>R</b>	
Preventive Maintenance	7-1	Replacement Parts	
		Ordering	2-2
<b>F</b>		Storing	7-2
Feed Control Plate	7-4	Return Arm	4-1, 7-4, 7-5
Assembling	3-6	Assembling	3-6
Film		Malfunctions	8-6
Loading	6-1	Roller Cluster	
Malfunctions	8-7	Assembling	3-6
Threading	6-3	Rollers	
Unloading	6-2	Preventive Maintenance	7-2
Film Guide Shield		RUN/OFF/BRAKE Switch	5-3
Preventive Maintenance	7-2		
Removing and Installing	7-2		
Film Position Sensor	4-1, 7-4		
Filter	7-3, 7-4		

**S**

Shows

Loading	6-2
Special Notices	1-1
Speed Control Knob	5-2, 5-3
Static Electricity	
Preventive Maintenance	7-3
System Malfunctions	8-1

**W**

Warning, Definition of	1-2
------------------------	-----